



DOWNTOWN HICKSVILLE COMPLETE STREETS PROJECT PUBLIC MEETING #2

Nassau County Department of Public Works
January 6, 2020



NV5



PROJECT GOALS

- Safety
- Pedestrian Activity in Downtown Area
- Commuter Connectivity
- Improving Non-motorized Transportation
- Accommodating Future Residential Developments



Department of
Transportation



Long Island Rail Road

Downtown
Revitalization
Committee



PROJECT WEBSITE: www.downtownhicksvillenyc.com



Website includes:

- Project News & Updates
- Materials from Public Meetings
- FAQ page
- Case Studies
- Wikimap Mapping Tool

SAFETY

Crash Analysis

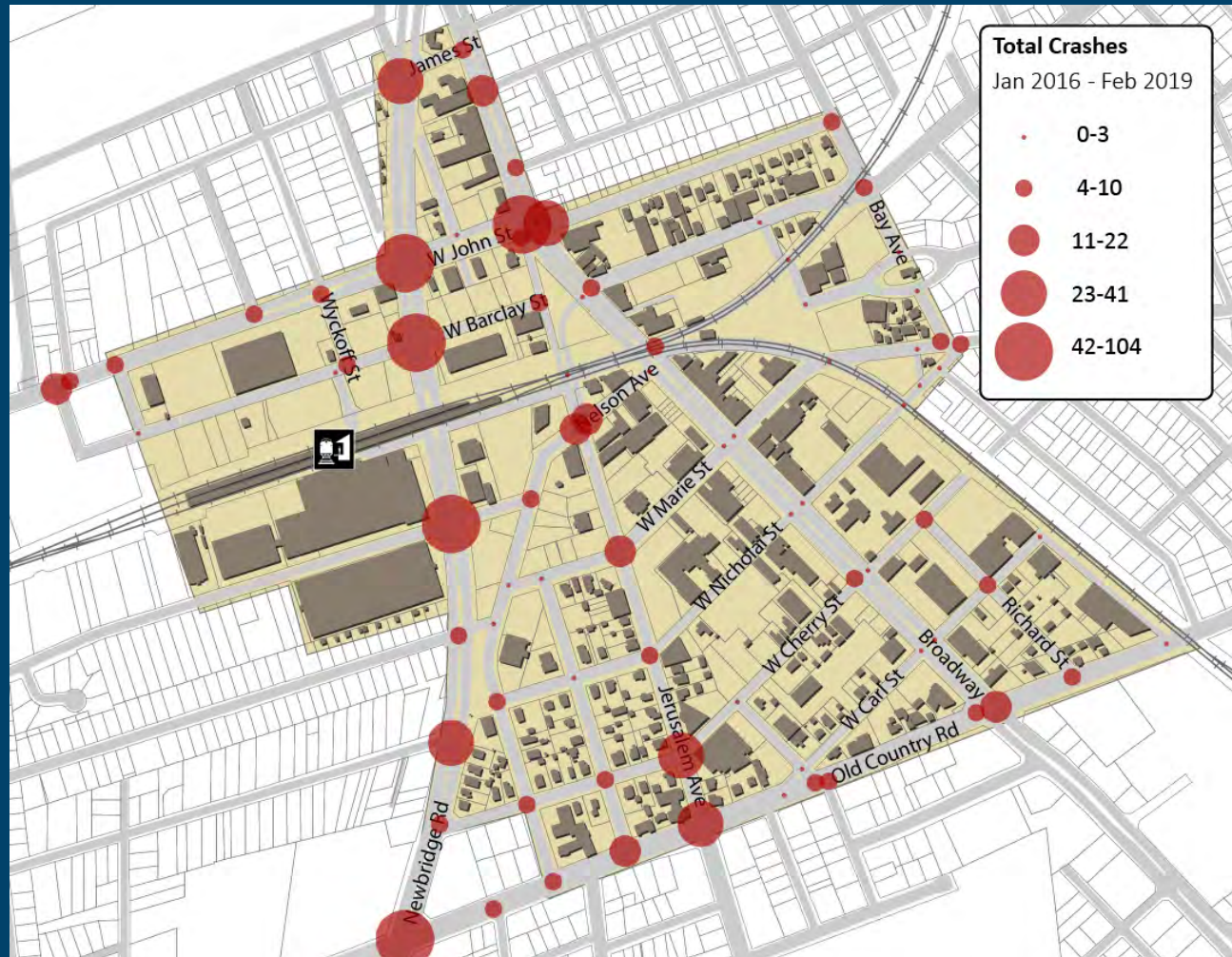
2,171
Total Crashes
(3-year period)

Most Common

- Rear End Collision
- Left Turn Crashes

Intersection with Most Crashes

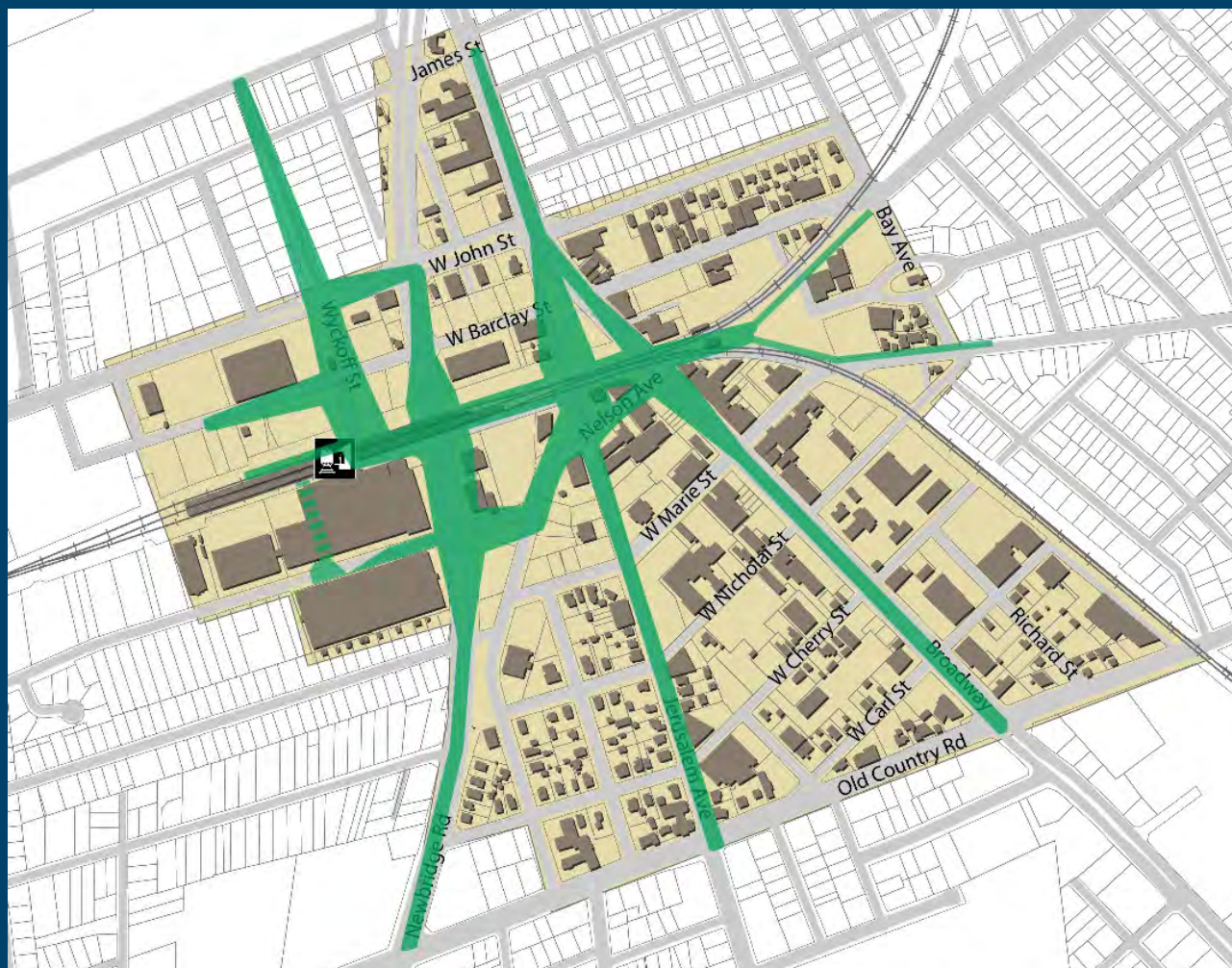
- W John St &
Jerusalem/
Broadway
(110+ Crashes)



PEDESTRIAN ACTIVITY

Pedestrian Activity

THICKER LINES
INDICATE HIGHER
PEDESTRIAN
VOLUMES
(BASED ON
MIOVISION TRAFFIC
COUNT DATA)



COMMUTER CONNECTIVITY



Figure 17. Parking Lots in Downtown Hicksville

Yellow = Town of Oyster Bay
Orange = private

COMMUTER CONNECTIVITY



Figure 17. Parking Lots in Downtown Hicksville

Yellow = Town of Oyster Bay
Orange = private

MAP SOURCE: DRI REPORT

OVERVIEW OF RECOMMENDATIONS

Recommendation Overview



Recommendations

1. Broadway Downtown Streetscaping

2. Bike Routes and Facilities

— Dedicated Bike Lane or
Buffered Bike Lane

..... Shared Lane Markings

3. Duffy Ave & Newbridge Road

4. Duffy Ave Mid-Block Crossing

5. Broadway & Newbridge Rd at John St

6. Train Station Circulation and Pedestrian Safety
Improvements

7. Barclay Triangle & Park Expansion

Option A DRI-based

Option B Preferred Alternative

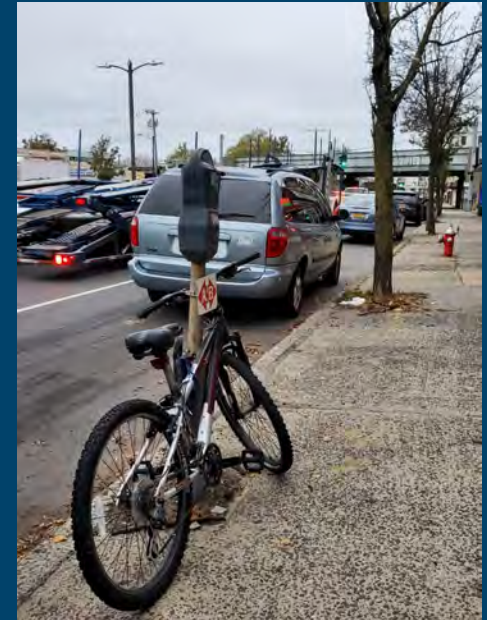
8. “Underline” Connection Under the LIRR Overpass
(Broadway to Newbridge Rd)

↔ Underline Bike-Ped Path

Downtown Hicksville **Complete Streets Project**

#1: BROADWAY DOWNTOWN STREETSCAPING

ISSUES / OPPORTUNITIES



#1: BROADWAY DOWNTOWN STREETSCAPING



#1: BROADWAY DOWNTOWN STREETSCAPING



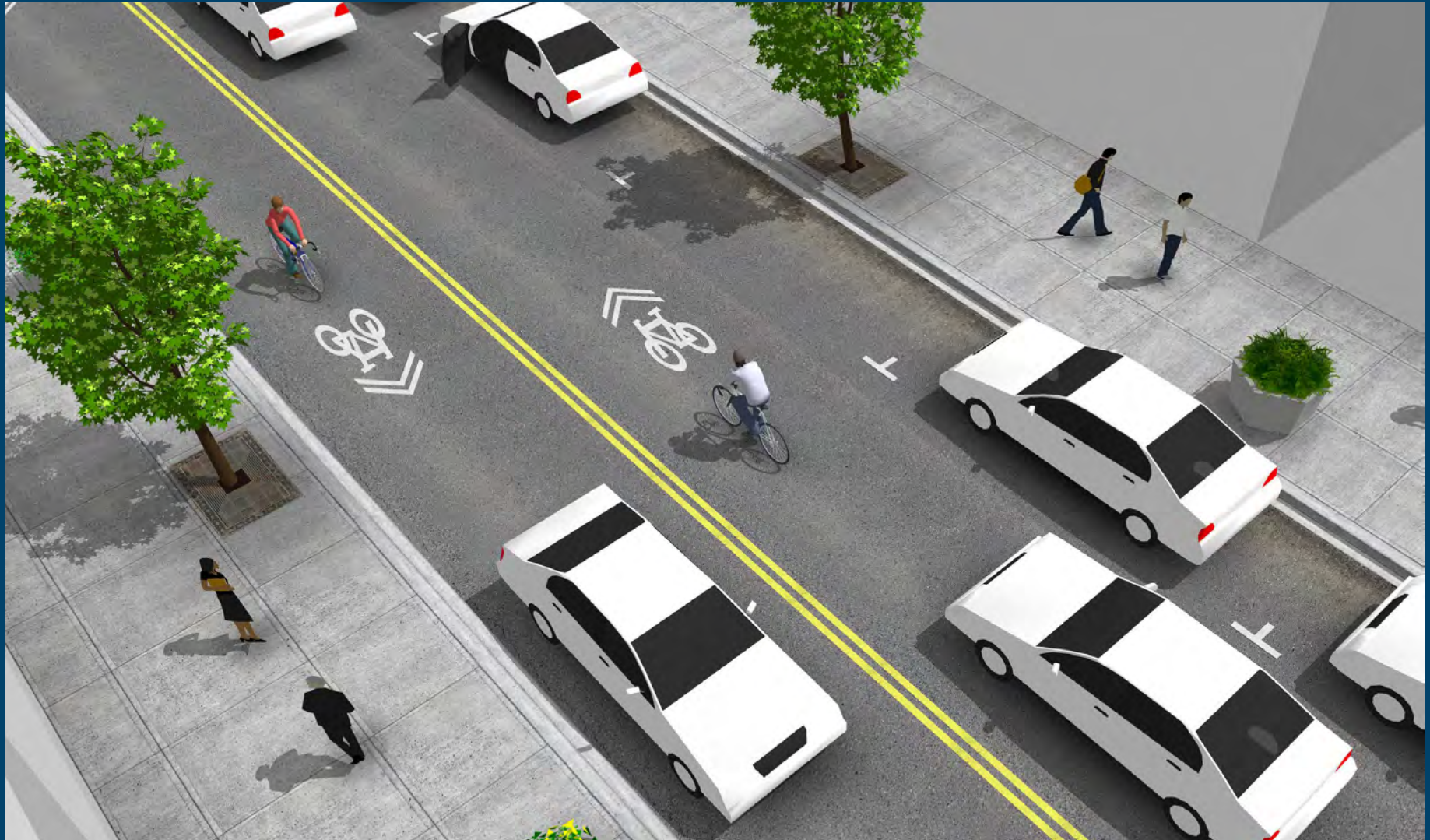
#2: BIKE ROUTES AND FACILITIES

ISSUES / OPPORTUNITIES



#2: BIKE ROUTES AND FACILITIES

SHARED LANE MARKINGS



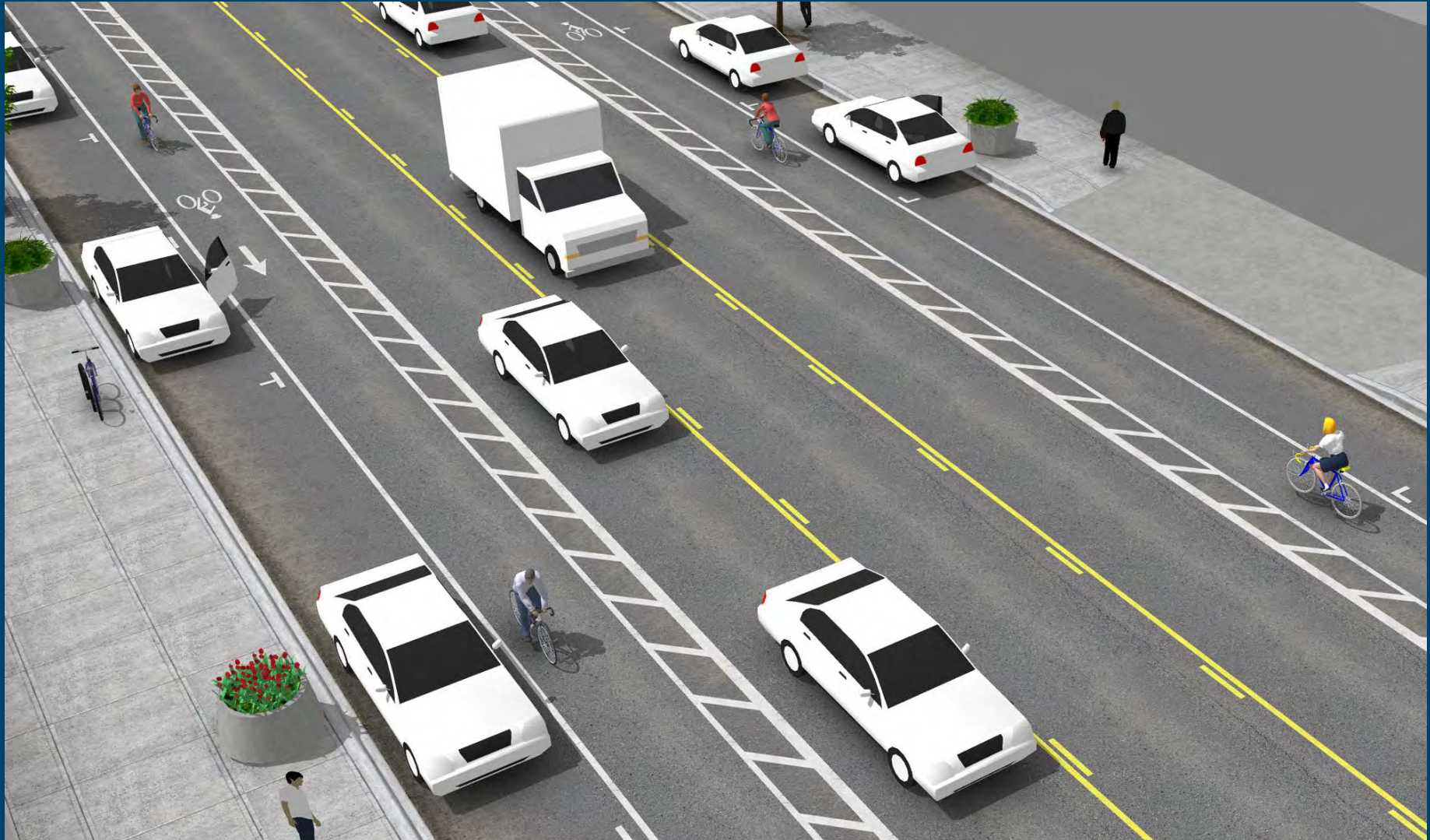
#2: BIKE ROUTES AND FACILITIES

DEDICATED BIKE LANES



#2: BIKE ROUTES AND FACILITIES

BUFFERED BIKE LANES



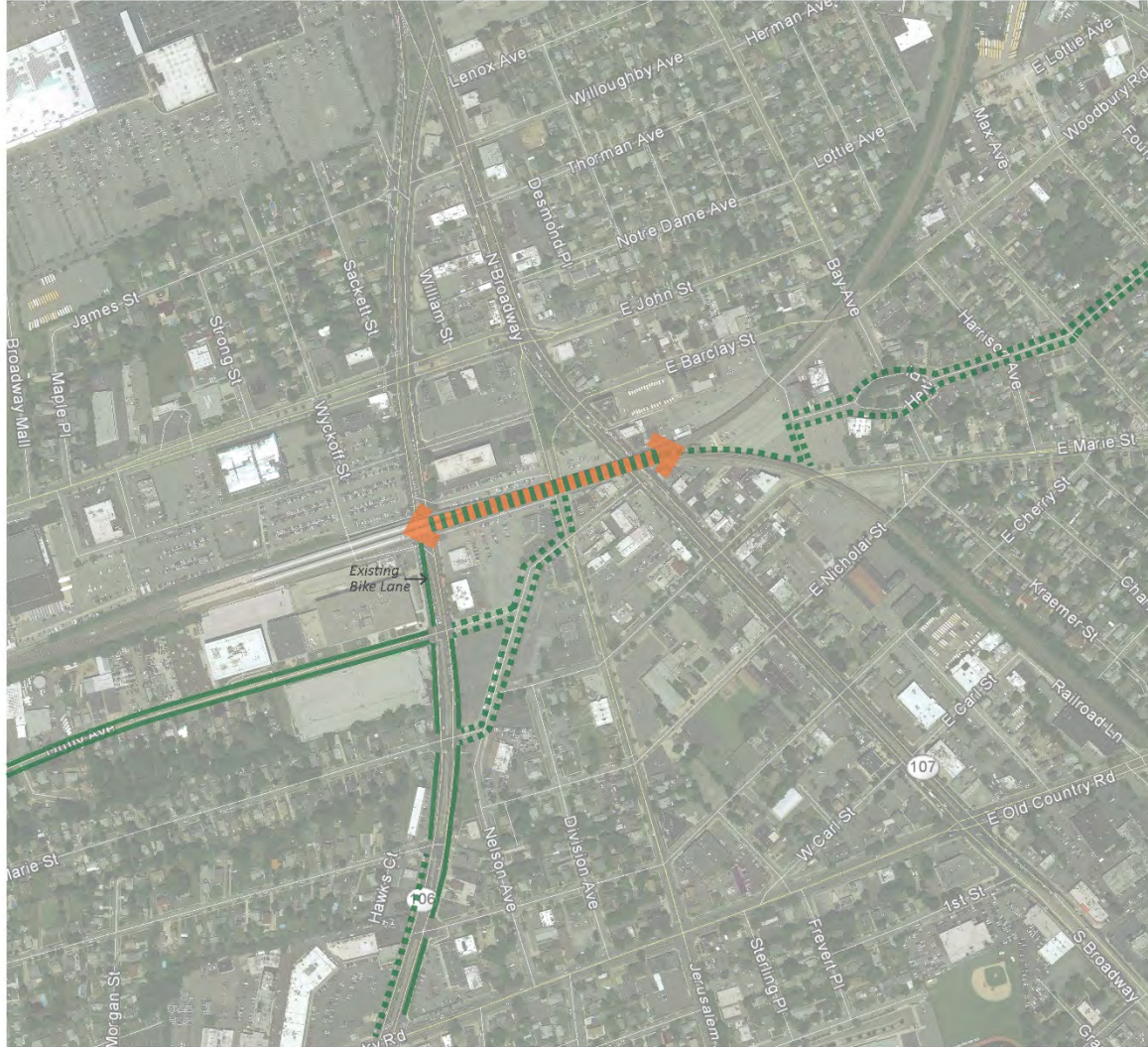
#2: BIKE ROUTES AND FACILITIES

BIKE LANES THROUGH INTERSECTIONS






#2: BIKE ROUTES AND FACILITIES

Recommended Bike Routes



Recommended Bike Routes and Facilities

-  Dedicated Bike Lane or Buffered Bike Lane
-  Shared Lane Markings
-  Underline Bike-Ped Path

Downtown Hicksville **Complete Streets Project**

#3: DUFFY AVE & NEWBRIDGE ROAD

ISSUES / OPPORTUNITIES

- WIDE TRAVEL LANES
- WIDE SHOULDERS AVAILABLE FOR BUFFERED BIKE LANES
- BUS STOPS BETWEEN DUFFY AND STATION



#3: DUFFY AVE & NEWBRIDGE ROAD

Duffy Ave & Newbridge Rd -EXISTING



Downtown Hicksville Complete Streets Project

#3: DUFFY AVE & NEWBRIDGE ROAD

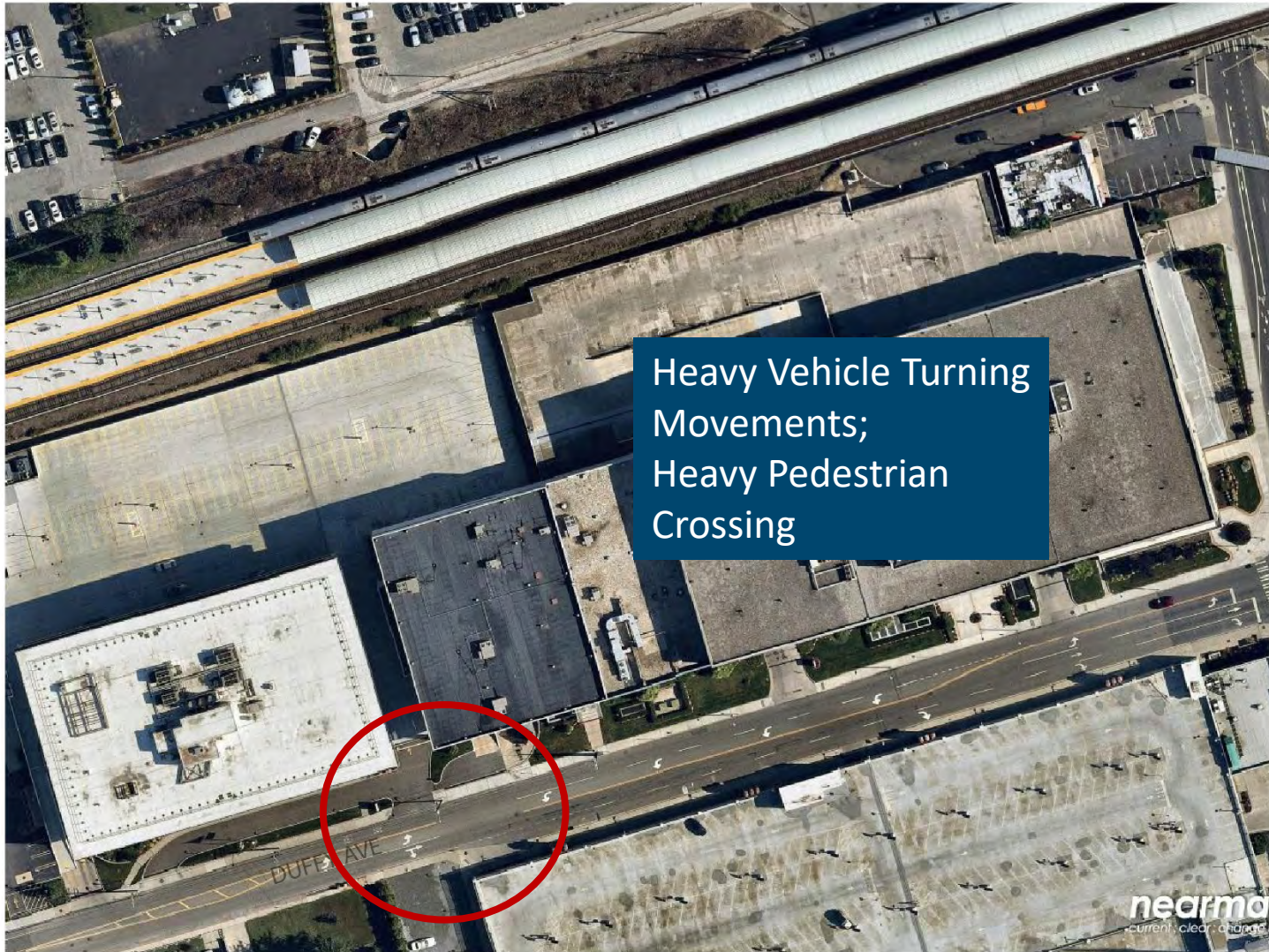
Duffy Ave & Newbridge Rd



Downtown Hicksville Complete Streets Project

#4: DUFFY AVE MID-BLOCK CROSSING

Duffy Ave Mid-Block Crossing to Pedestrian Path -EXISTING



#4: DUFFY AVE MID-BLOCK CROSSING

ISSUES / OPPORTUNITIES



Hicksville Train Station

EXISTING PEDESTRIAN PATH

408 Pedestrians
Counted from 7-8am

RECOMMENDED PEDESTRIAN
CROSSING ELEMENT

BIKE LANES

TOWN OF OYSTER BAY
PARKING GARAGE

DUFFY AVE

RECOMMENDED CROSSWALK

nearmap
current clear & color

Downtown Hicksville Complete Streets Project

#5: BROADWAY & NEWBRIDGE ROAD AT W. JOHN ST

Broadway & Newbridge Rd on John St -EXISTING



Downtown Hicksville Complete Streets Project

BROADWAY & JOHN ST

ISSUES / OPPORTUNITIES



NEWBRIDGE RD & JOHN ST

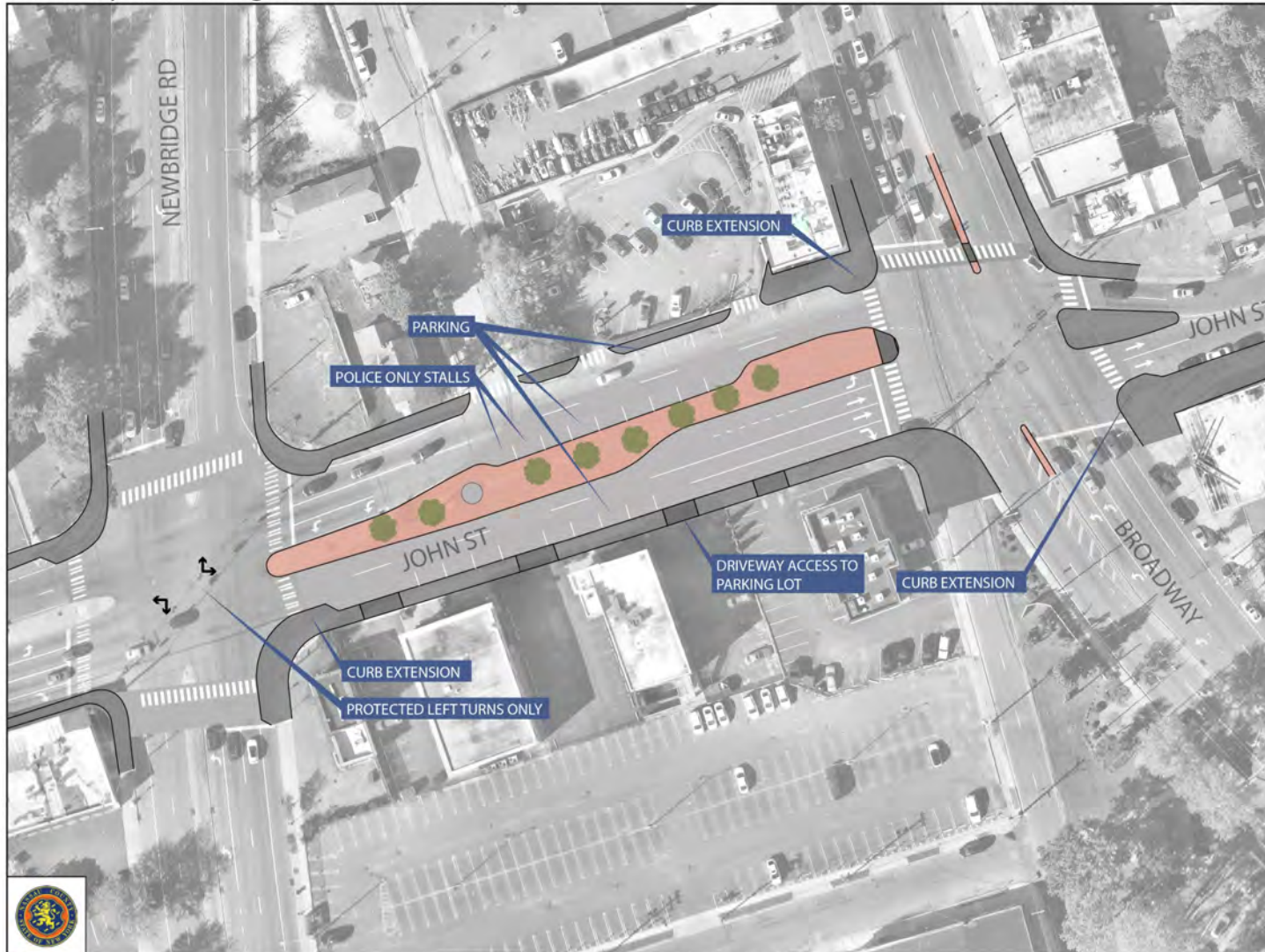
ISSUES / OPPORTUNITIES

- LONG PEDESTRIAN CROSSINGS
- HIGH CRASH LOCATION



#5: BROADWAY & NEWBRIDGE ROAD AT W. JOHN ST

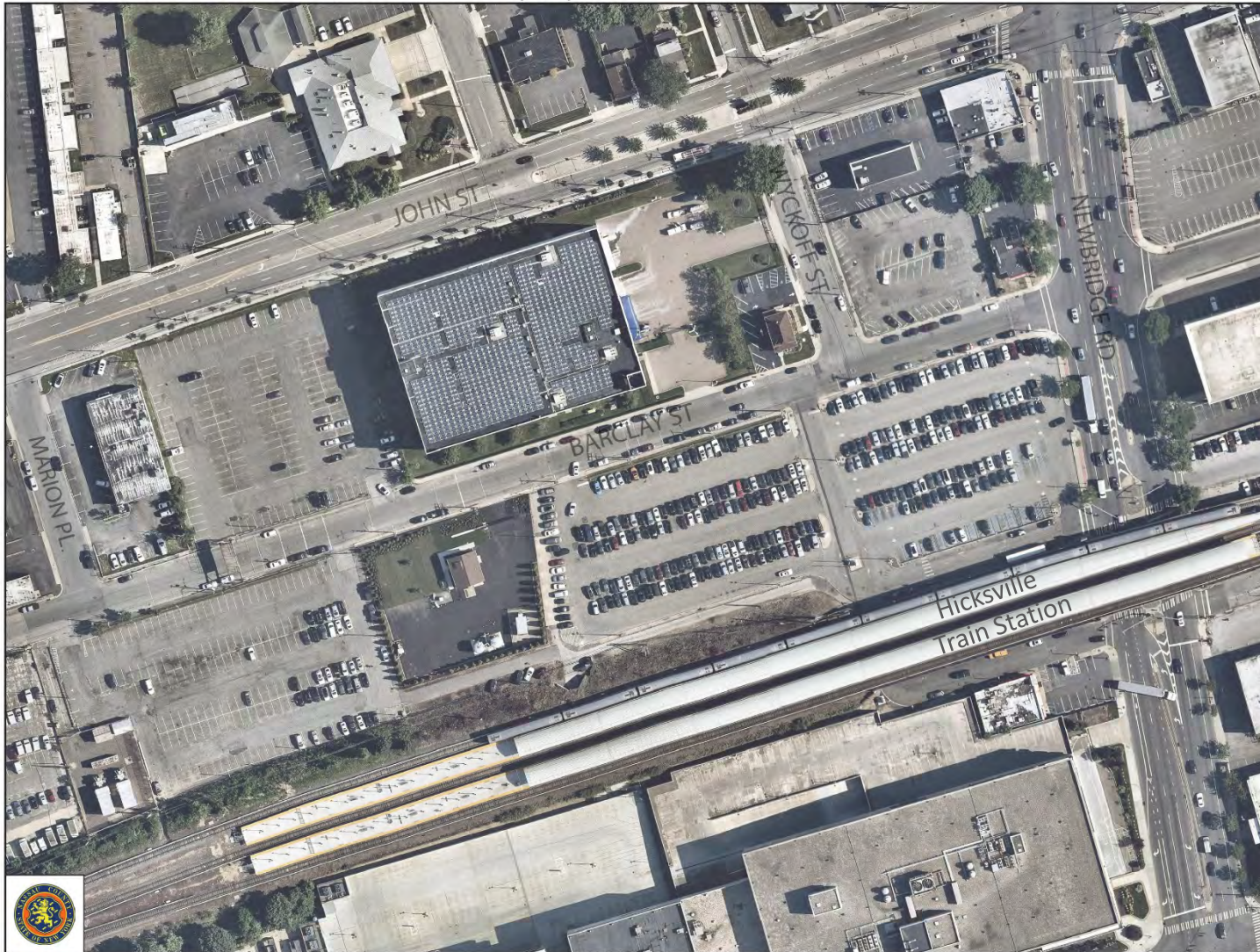
Broadway & Newbridge Rd on John St



Downtown Hicksville Complete Streets Project

#6: TRAIN STATION CIRCULATION AND PEDESTRIAN SAFETY IMPROVEMENTS

Train Station Circulation and Pedestrian Safety Improvements -EXISTING



Downtown Hicksville Complete Streets Project

#6: TRAIN STATION CIRCULATION AND PEDESTRIAN SAFETY IMPROVEMENTS

ISSUES / OPPORTUNITIES



#6: TRAIN STATION CIRCULATION AND PEDESTRIAN SAFETY IMPROVEMENTS

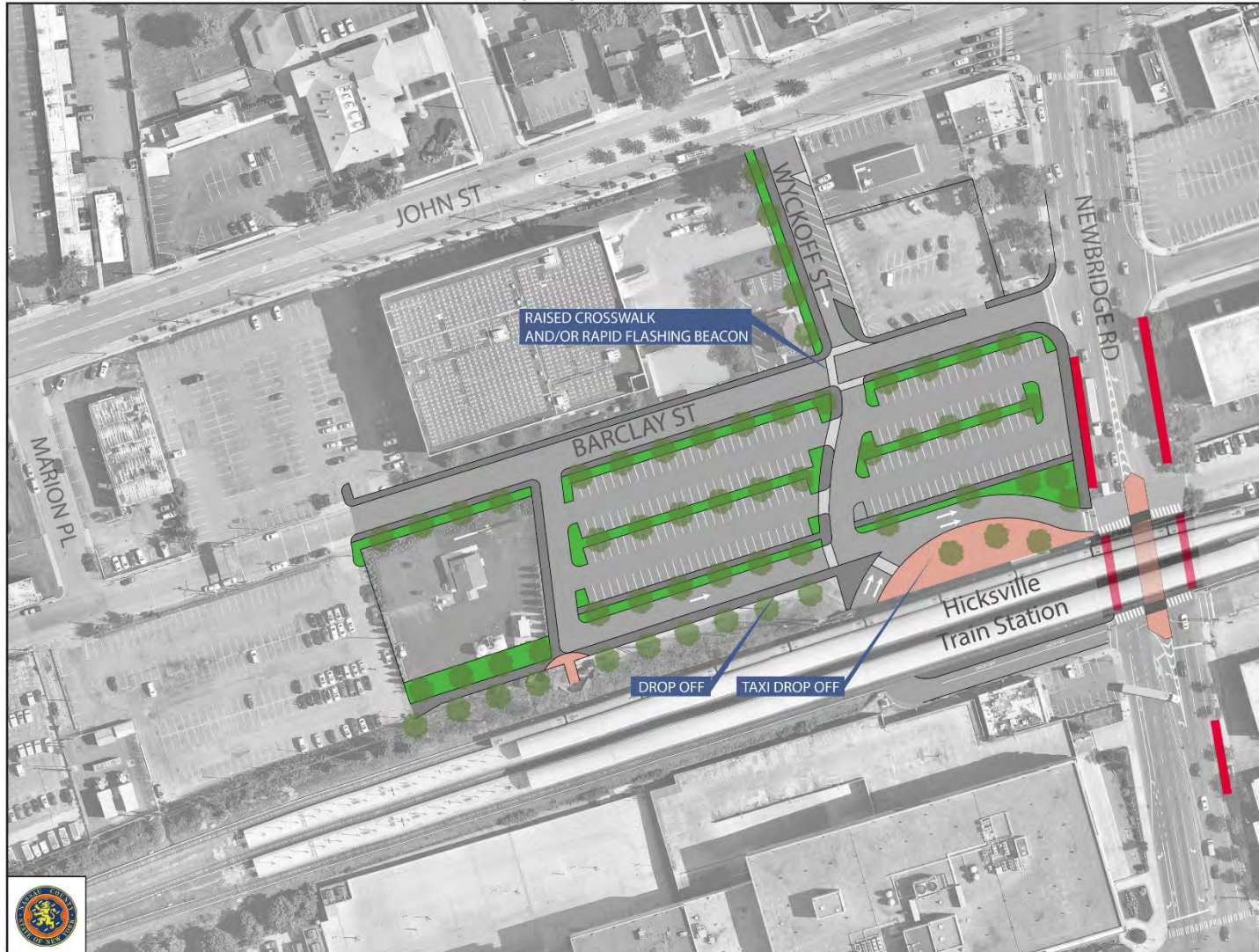
NV5

ISSUES / OPPORTUNITIES



#6: TRAIN STATION CIRCULATION AND PEDESTRIAN SAFETY IMPROVEMENTS

Train Station Circulation and Pedestrian Safety Improvements



#7: BARCLAY TRIANGLE & PARK EXPANSION

EXISTING CONDITIONS

Barclay Triangle & Park Expansion - EXISTING



#7: BARCLAY TRIANGLE & PARK EXPANSION

EXISTING CONDITIONS

Barclay Triangle & Park Expansion - EXISTING



Downtown Hicksville Complete Streets Project

#7: BARCLAY TRIANGLE & PARK EXPANSION

EXISTING CONDITIONS

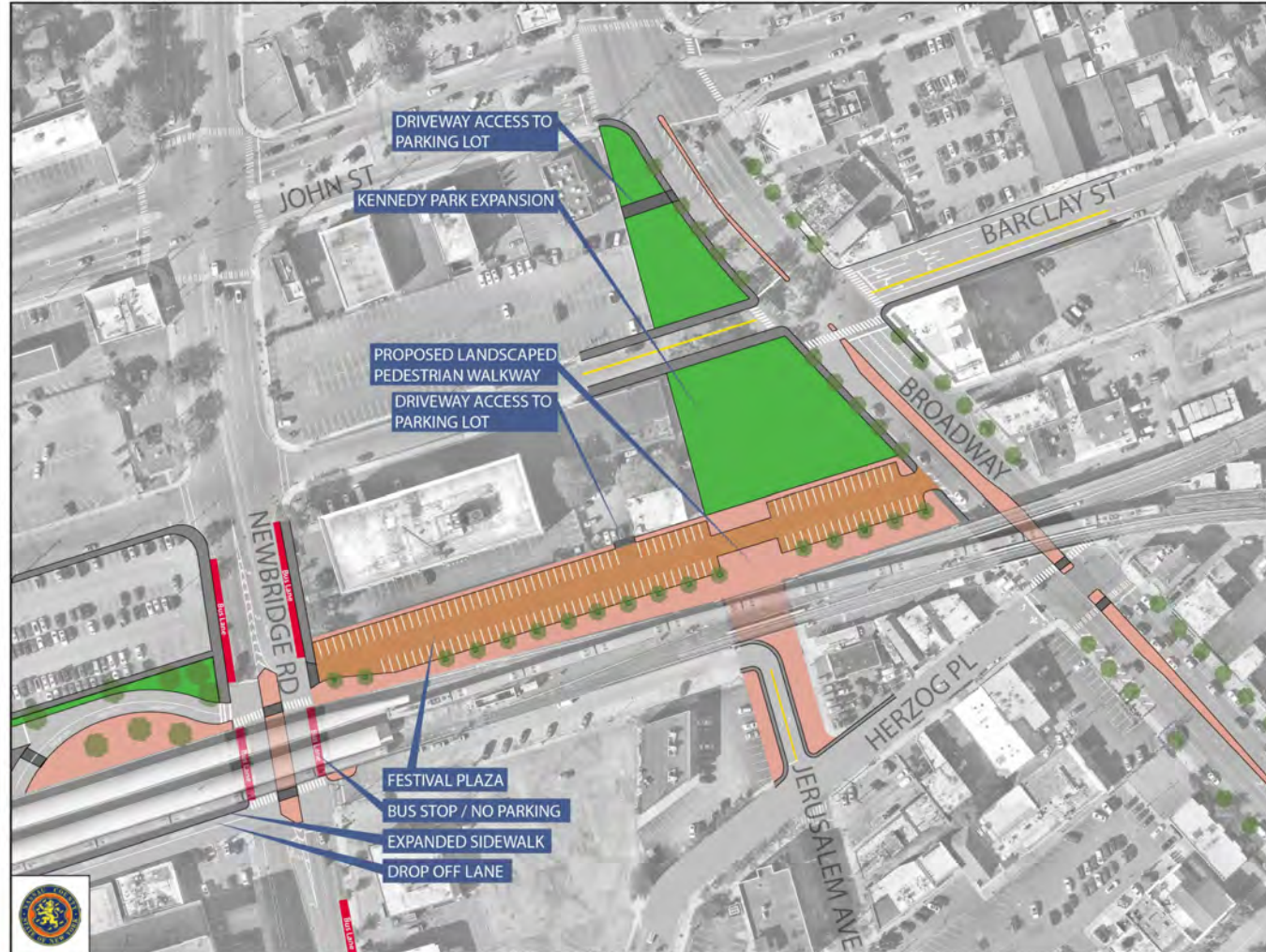
Barclay Triangle & Park Expansion - EXISTING



#7: BARCLAY TRIANGLE & PARK EXPANSION

OPTION A: INCLUDES GEOMETRIC CHANGES RECOMMENDED BY DRI

Barclay Triangle & Park Expansion [OPTION A]

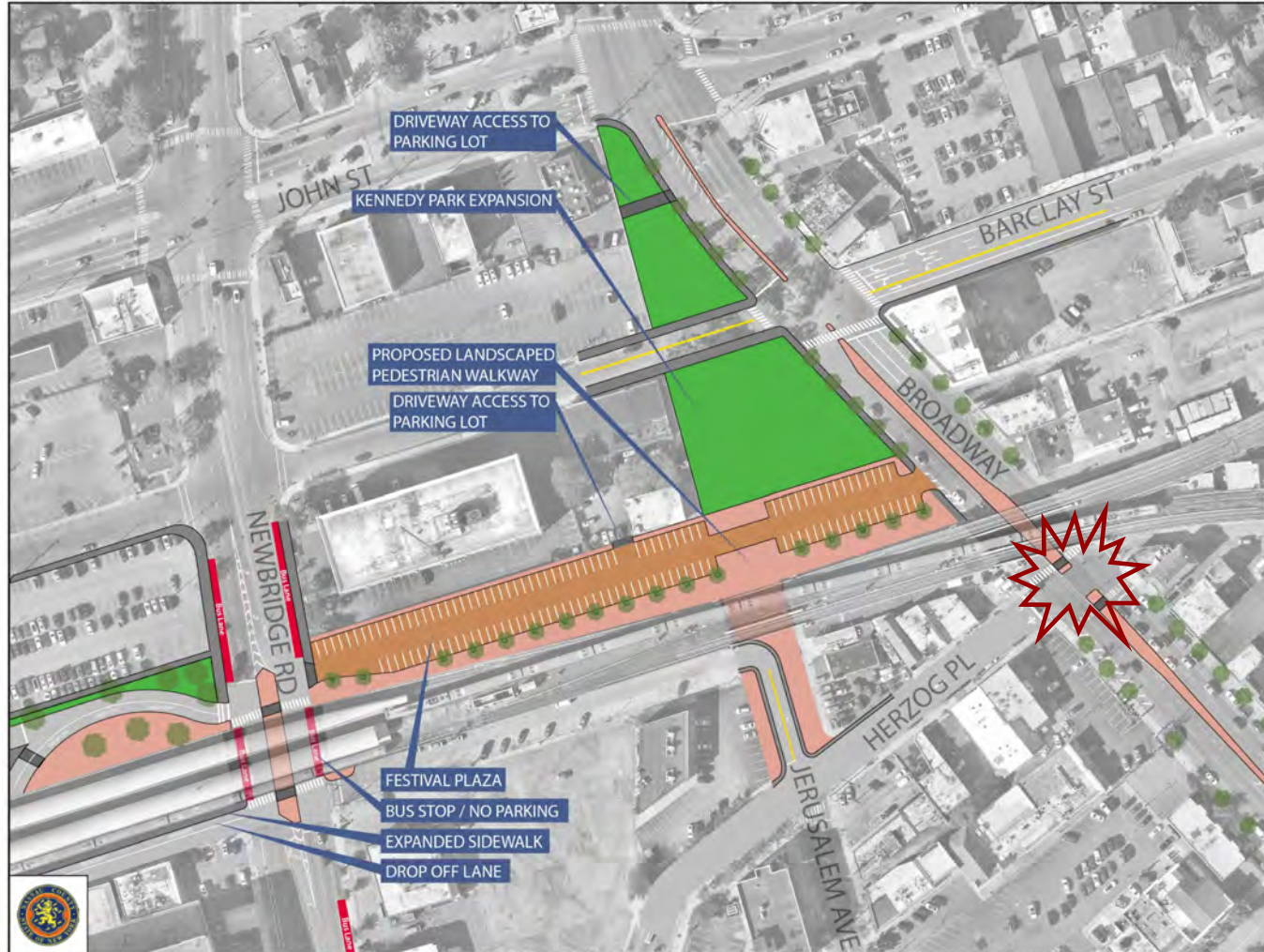


Downtown Hickville Complete Streets Project

#7: BARCLAY TRIANGLE & PARK EXPANSION

OPTION A: INCLUDES GEOMETRIC CHANGES RECOMMENDED BY DRI

Barclay Triangle & Park Expansion [OPTION A]



Downtown Hicksville Complete Streets Project

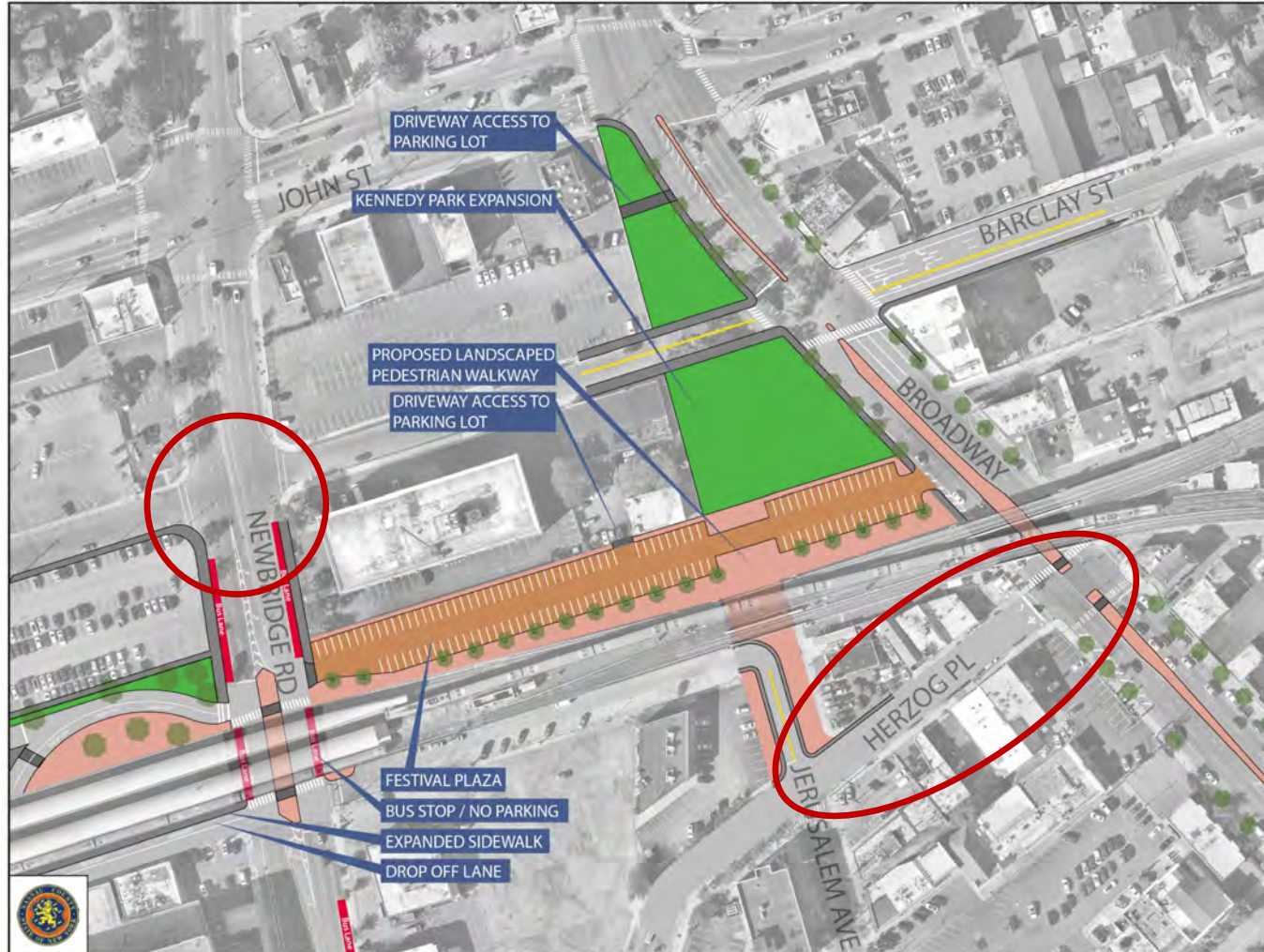
NOT FEASIBLE:

- Creates new turning conflict at Herzog & Broadway
- Creates backups with failing Levels of Service on Herzog Pl
- Forces cut-through traffic on side roads

#7: BARCLAY TRIANGLE & PARK EXPANSION

OPTION A: INCLUDES GEOMETRIC CHANGES RECOMMENDED BY DRI

Barclay Triangle & Park Expansion [OPTION A]



Downtown Hicksville Complete Streets Project

NOT FEASIBLE:

- Creates backups with failing Levels of Service on Herzog Pl, even with two eastbound lanes
- New through connection at Newbridge Rd & Barclay St fails
- Forces cut-through traffic on side roads

#7: BARCLAY TRIANGLE & PARK EXPANSION

OPTION B: PREFERRED ALTERNATIVE

Barclay Triangle & Park Expansion [OPTION B]



Downtown Hicksville Complete Streets Project

RECOMMENDED:

- Creates right-angle intersection at Jerusalem Ave & Broadway
- Expands park space
- Provides safe crossings at all three major roads

#8: UNDERLINE

Underline Concept



Underline intersections with north-south roads



Newbridge Rd



Jerusalem Ave



Broadway at Herzog Pl

#8: UNDERLINE

ISSUES / OPPORTUNITIES



#8: UNDERLINE

ISSUES / OPPORTUNITIES: BROADWAY & HERZOG PL



#8: UNDERLINE

ISSUES / OPPORTUNITIES: JERUSALEM AVE OVERPASS



#8: UNDERLINE

ISSUES / OPPORTUNITIES: JERUSALEM AVE OVERPASS



#8: UNDERLINE

ISSUES / OPPORTUNITIES: NEWBRIDGE RD OVERPASS



#8: UNDERLINE

ISSUES / OPPORTUNITIES: NEWBRIDGE RD OVERPASS

- HIGH PEDESTRIAN VOLUMES
- ALL AREA BUSES STOP UNDER STATION OR NEARBY ALONG NEWBRIDGE RD
- PRIVATE VEHICLE DROP OFFS TAKE PLACE IN BUS STOPS, BLOCKING BUS PICK-UP / DROP-OFF



#8: UNDERLINE



Programmable pedestrian-scaled lighting and streetscaping



Sense of place provides traffic calming



Highly visible train station entrance



Column lighting detail



#8: UNDERLINE

JERUSALEM AVE OVERPASS

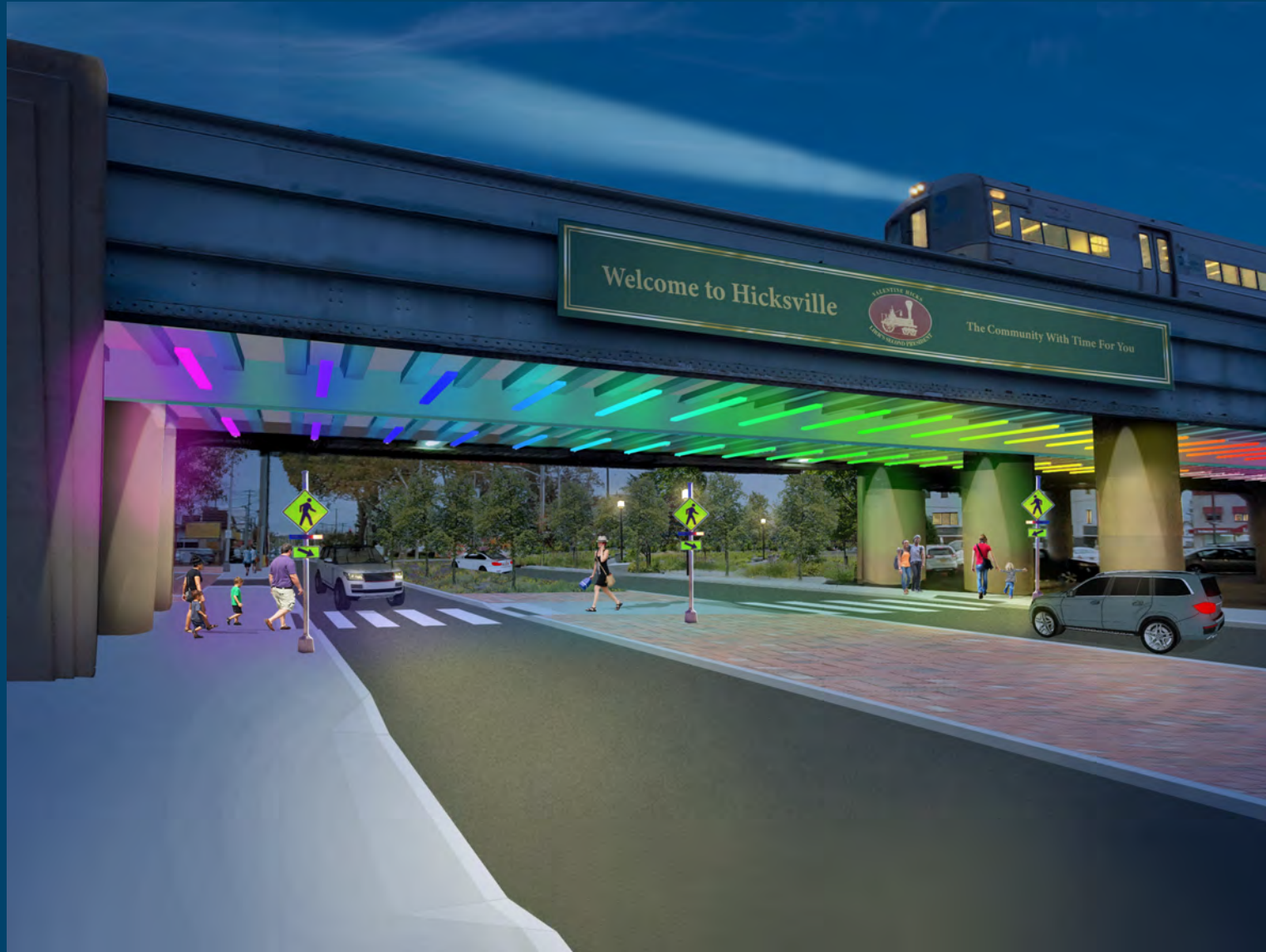


#8: UNDERLINE

JERUSALEM AVE OVERPASS: RECOMMENDED (DAY)



#8: UNDERLINE

JERUSALEM AVE OVERPASS: RECOMMENDED (NIGHT)

OVERVIEW OF RECOMMENDATIONS

Recommendation Overview



Recommendations

1. Broadway Downtown Streetscaping

2. Bike Routes and Facilities

— Dedicated Bike Lane or
Buffered Bike Lane

- - - - - Shared Lane Markings

3. Duffy Ave & Newbridge Road

4. Duffy Ave Mid-Block Crossing

5. Broadway & Newbridge Rd at John St

6. Train Station Circulation and Pedestrian Safety
Improvements

7. Barclay Triangle & Park Expansion

Option A DRI-based

Option B Preferred Alternative

8. “Underline” Connection Under the LIRR Overpass
(Broadway to Newbridge Rd)

↔ Underline Bike-Ped Path

Downtown Hicksville **Complete Streets Project**

NEXT STEPS

| | |
|--|---------------|
| Final Public Comments | January 2020 |
| Cost Estimates | February 2020 |
| Preparation of Final Study Report | March 2020 |
| Implementation Plan and Grant Opportunities | Ongoing |

PROJECT GOALS

- Safety
- Pedestrian Activity in Downtown Area
- Commuter Connectivity
- Improving Non-motorized Transportation
- Accommodating Future Residential Developments



Department of
Transportation



Long Island Rail Road

Downtown
Revitalization
Committee

