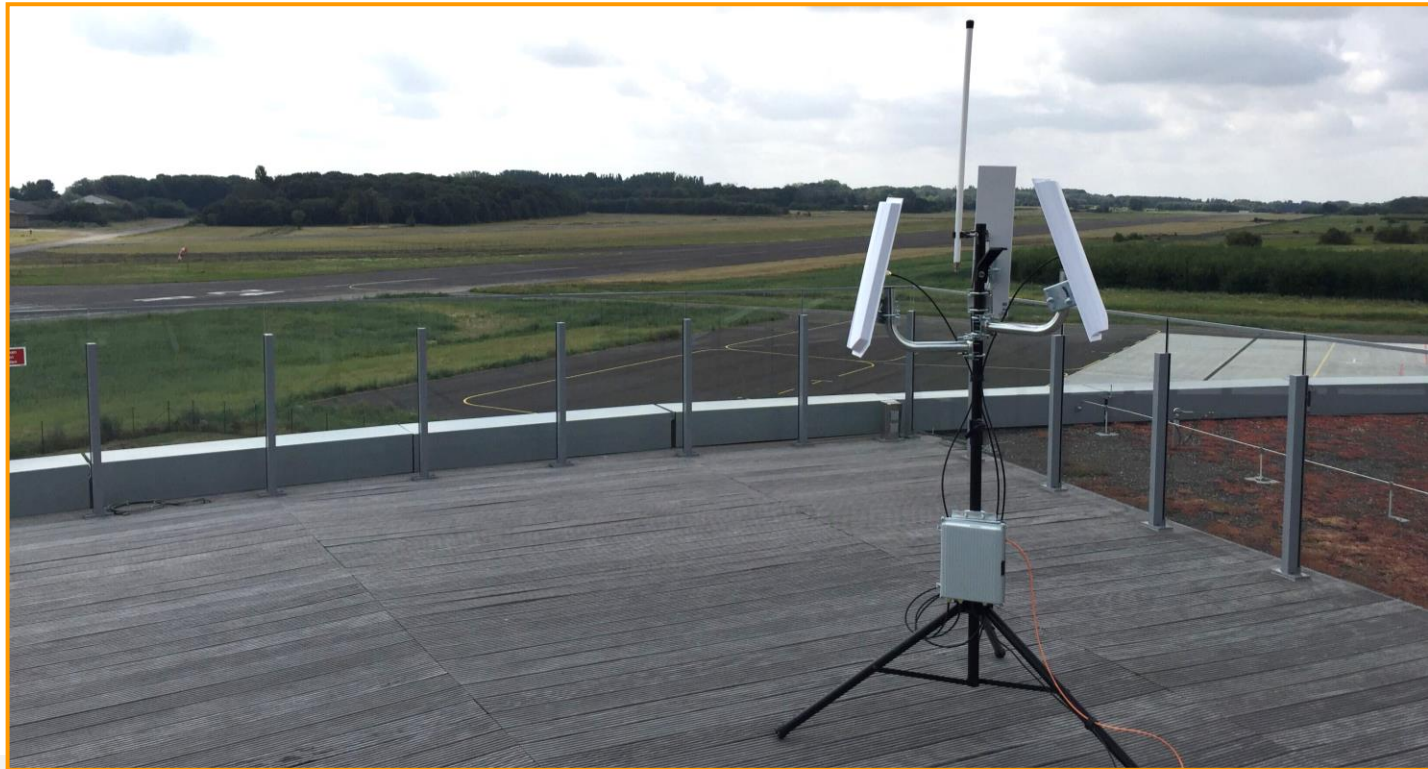


SEN-ID

MULTIFUNCTIONAL DETECTION SYSTEM



SEN-ID is a multifunctional RF detection system, which can be used as a stand-alone module or integrated into existing Senhive UAV detection systems. SEN-ID is the first cost-effective, European, detection system capable of reading the "electronic license plate" of UAVs. It is already integrated with DJI's latest on-board electronic identification systems and compatible with various UTM systems. By using "software defined radios", the SEN-ID can also be used to detect ships (AIS), jammers, GPS spoofing, ... With its focus on critical applications and 99% uptime, the SEN-ID is the ideal starting point for the detection and security of your RF spectrum.



Compatible with the latest eID standards

SEN-ID is already compatible with various standards such as DJI remote ID, Wi-Fi Aware, BLE 4.0/5.0 and fully integrated with different UTM systems.



Multi-frequency Multi-purpose

SEN-ID is able to receive different types of frequencies: AIS, ADS-B/Mode-S, FLARM, ... Therefore, the system is versatile and ideal for use in ports, airports, military bases, ...



Web Application & API

Data such as UAV type, position, pilot information, etc. is available via our user-friendly application or via an API to your UTM/USP platform.



Multilateration

The SEN-ID is able to detect "spoofing", i.e. to check whether the signal (GPS, drone, GSM, ...) transmitted corresponds to its real position and avoids any form of "hacking".

RF Detector

Detection type	Passive
Frequencies	eID - 2.4 GHz, Bluetooth AIS - 161.975 Mhz & 162.975 Mhz Spectrum analyzer: 1 MHz – 6 GHz (option)
Compatibility	DJI remote-ID, Wi-Fi Aware, ASTM ADS-B, FLARM, AIS (option)
Range	+ 5Km (line of sight)
Antenna type	3x Omnidirectional 3x sector antennas
Dimensions	28.1 x 22.5 x 9.5cm
Weight	3.7 Kg (/w antennas)
Operating temperature	-30°c + 85°c
Connectivity	RJ45 3G/4G (5G pending)
Power	PoE+ (IEEE 802.3at) 20 Ah UPS battery interne (up to 8u battery life)
Consumption	25W
Data storage	SSD / SD
IP	67
Warranty	1 year

Options & accessories

Frequencies	1MHz – 6 GHz
Power	Batteries Solar panel
Additional detections	AIS, FLARM, ADS-B
Connectivity	Satellite / Carrier bonding
Localization	GPS / GLONASS
Storage	SSD up to 2TB

Features

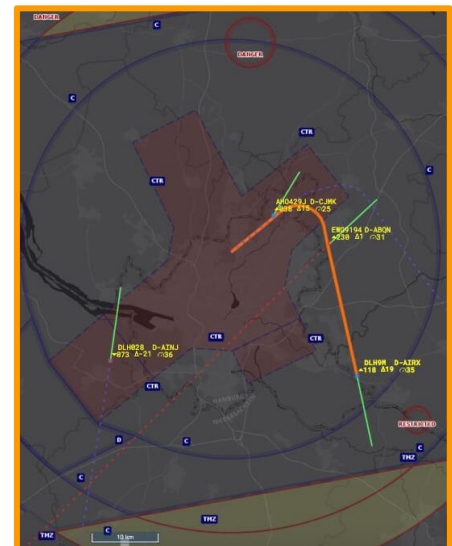
- Compatible with the latest EU legislation
- Mobile version available

Technology

- AI on-the-edge
- Scanning de 20Mhz - 60 Mhz
- CPU 4 Core on-board processing

Applications

- eID detection / visualization of authorized UAVs
- Ship detection with AIS transponders
- ADS-B / Mode-S detection and vizualization: ideal for airports
- Detection of illicit jammers
- Detection of false GPS signals



Senhiv – Remote Sensing Anywhere

After more than 10 years of consulting in critical systems, Senhiv has specialized in innovative applications for emergency and security services from Belgium to Antarctica. Our main solutions are Sen-Eye, Sen-Air, Sen-Link and Sen-Com :

- **Sen-Eye:** autonomous detection of forest fires in hard-to-reach and remote areas using artificial intelligence and image recognition
- **Sen-Air:** automated detection of UAVs and UAV pilots and elimination of UAVs over hazardous installations, airports, festivals and other no-fly zones.
- **Sen-Link:** basic multi-purpose communication technology with maximum uptime, using multiple operators and communication technologies.
- **Sen-Com:** a secure communication application for smartphones that allows you to communicate with your team at any time, through video, audio and file sharing.

Senhiv BVBA

Droneport
Lichtenberglaan 1090
3800 Sint-Truiden
Belgium

info@senhiv.com
www.senhiv.com