

UKR
SPEC_systems



USG-212
Dual Sensor Gyro-Stabilized Gimbal

UKR
SPEC_systems

www.ukrspecsystems.com
Made in Ukraine





Full HD day-view
camera with 30x
optical zoom

High performance
thermal camera

Real-time video
processing

Anti-vibration damping
mount included

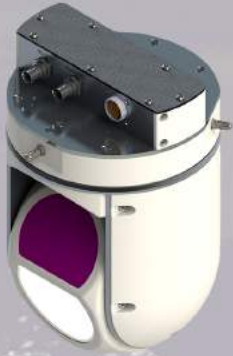
Precision positioning

Angles of rotation
360°

USG-212 Multi Sensor Gyro-Stabilized Gimbal

USG-212 gimbal was designed to be operated on fixed-wing UAVs or small manned aircrafts. It is notable for its low weight, durable design and compact dimensions. High performance gyro-stabilized platform delivers high precision guidance, while integrated damping system reliably eliminates all vibrations that occur in flight, providing high quality image quality in conditions of high vibrations, even while maintaining maximum optical zoom. Digital video processing module offers advanced features, such as real-time digital HD video stabilization and target tracking. Combined with affordable price tag USG-212 is one of the best in class professional solutions on the market.





We design anti-vibration damping systems specifically for each airframe. This helps to eliminate vibrations, as result you have clear image without "jello effect".

Full HD Sony EV7500 camera with 1/2.8-type Exmor™ CMOS image sensor and 30x optical zoom.



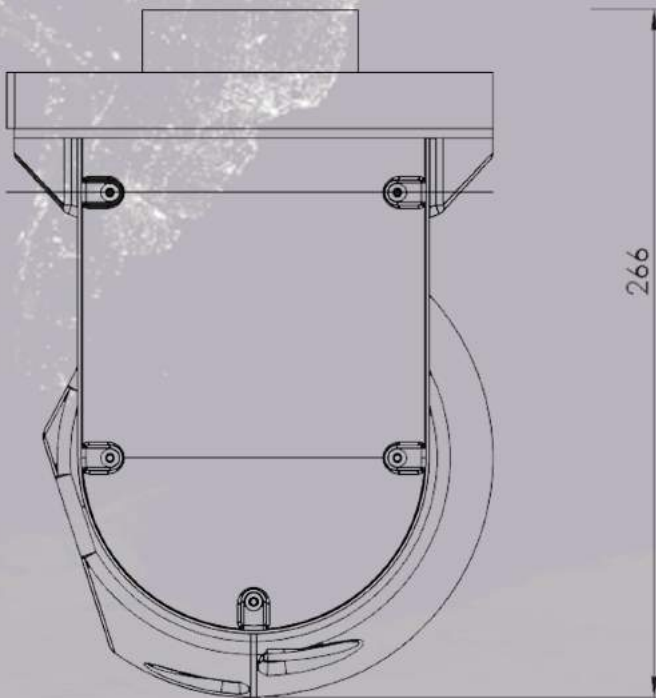
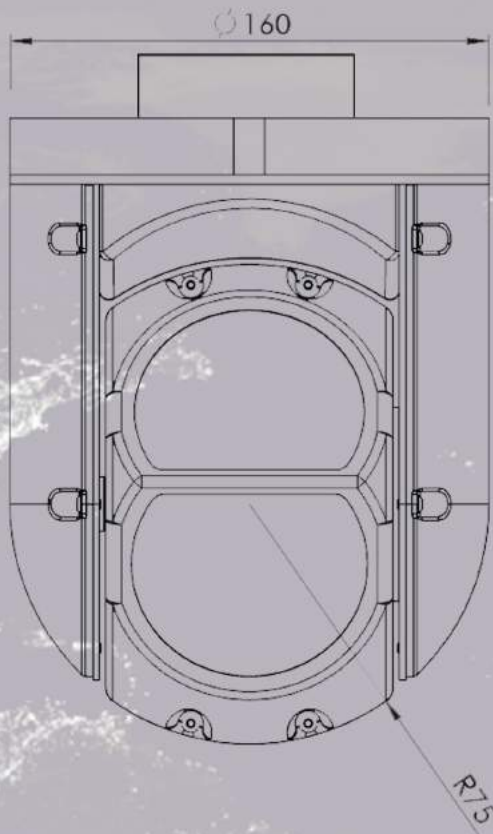
Altitude 1000 m (3280 ft.). Distance to target approx. 6 km (3.7 miles).

Integrated thermal camera allows to effectively detect and track targets even in low-visibility conditions.



Video processing with digital video stabilization, target tracking, scene lock.





Specifications

Dimensions

Width : 160 mm
Height : 266 mm

Weight

2200 g

Day-view camera

Camera
SONY FCB-EV7500

Resolution

Full HD
1920 x 1080 at 60 fps

Optical zoom

30x

View angles

63.7°(wide end) to
2.3°(tele end)

Lens

f=4.3mm (wide) to
129.0mm (tele);
F1.6 to F4.7

Working temperature

-20 °C - + 45 °C

Rotation angles

Pan angle: 360°
Pitch angle: 360°
Roll angle: -45° to +45°

Electrical parameters

Power

12V 25W

Control signals

PPM (optionally RS485,
CAN)

Video out

HD-SDI or
HDMI (optionally)

Thermal camera

Resolution

640*480 or
320*240

Refresh rate

30 Hz or 9 Hz

Lens

35 mm or 40 mm

Digital zoom

1x, 2x, 4x

