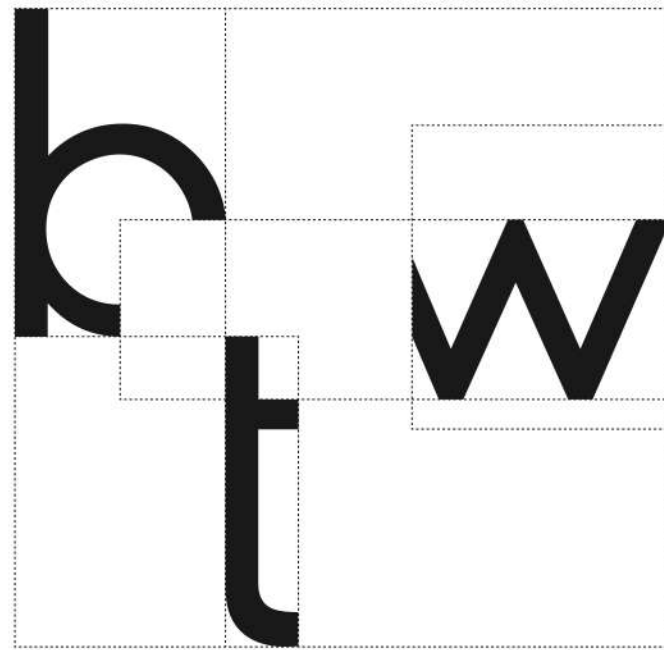


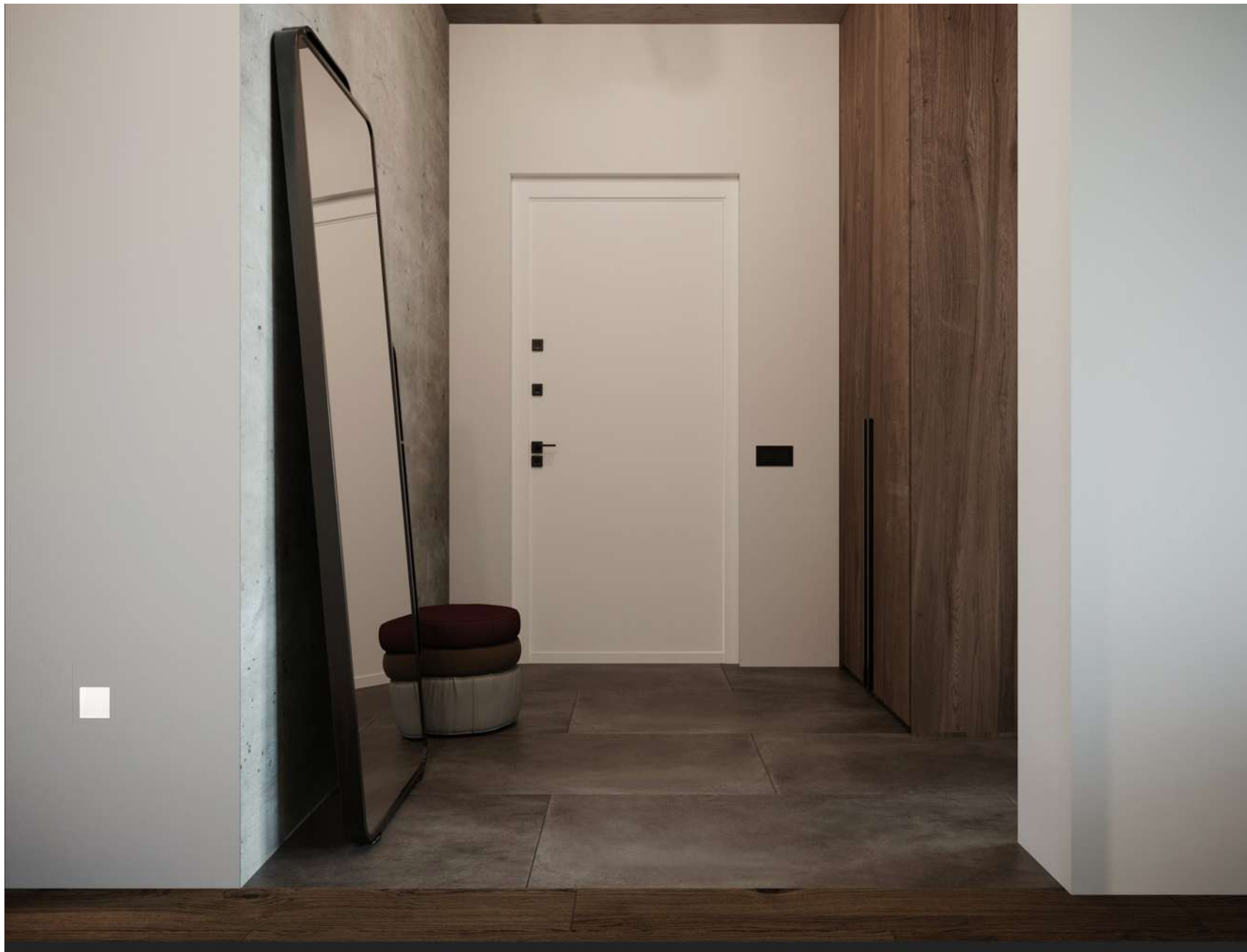
DESIGN PROJECT



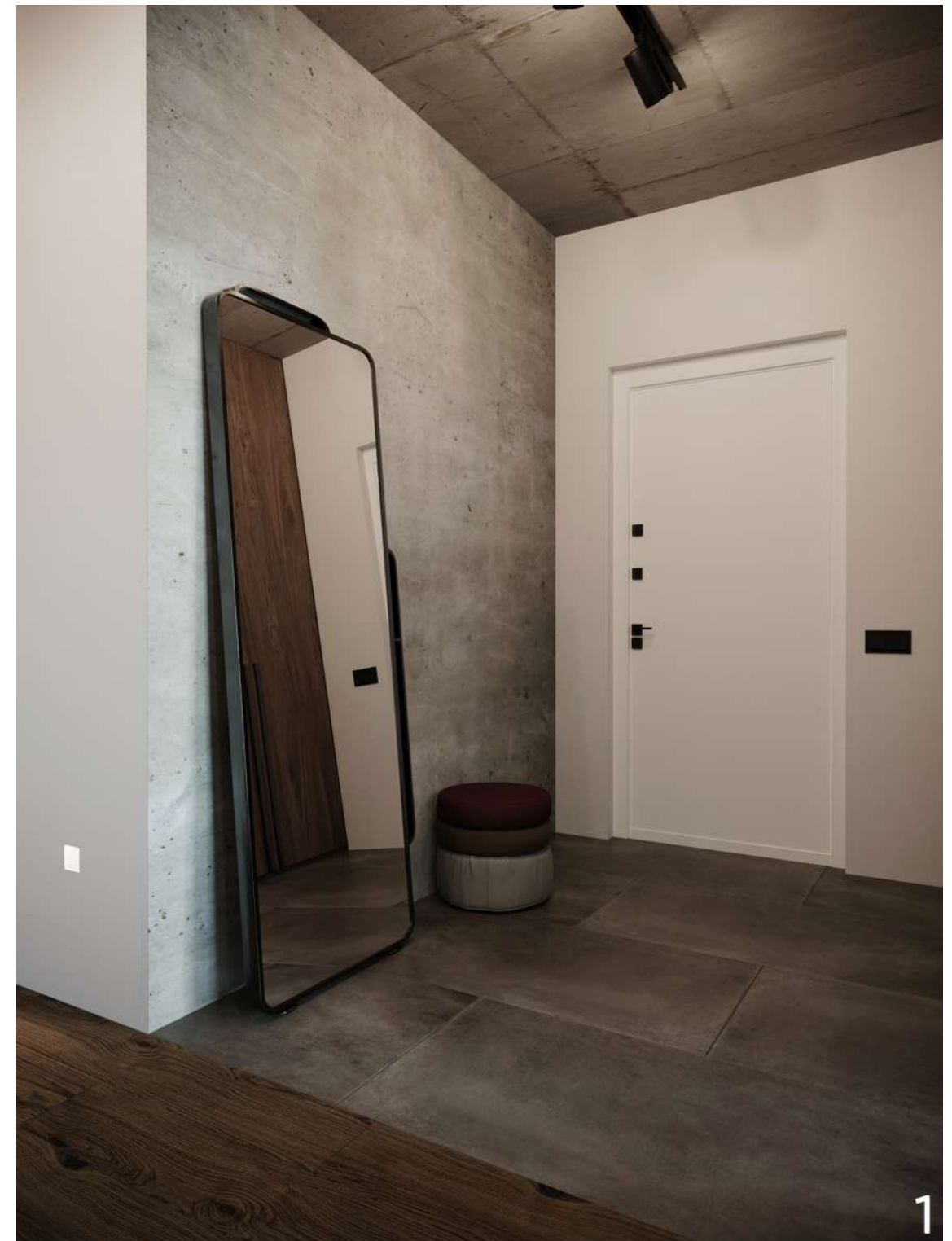
BETWEEN THE WALLS

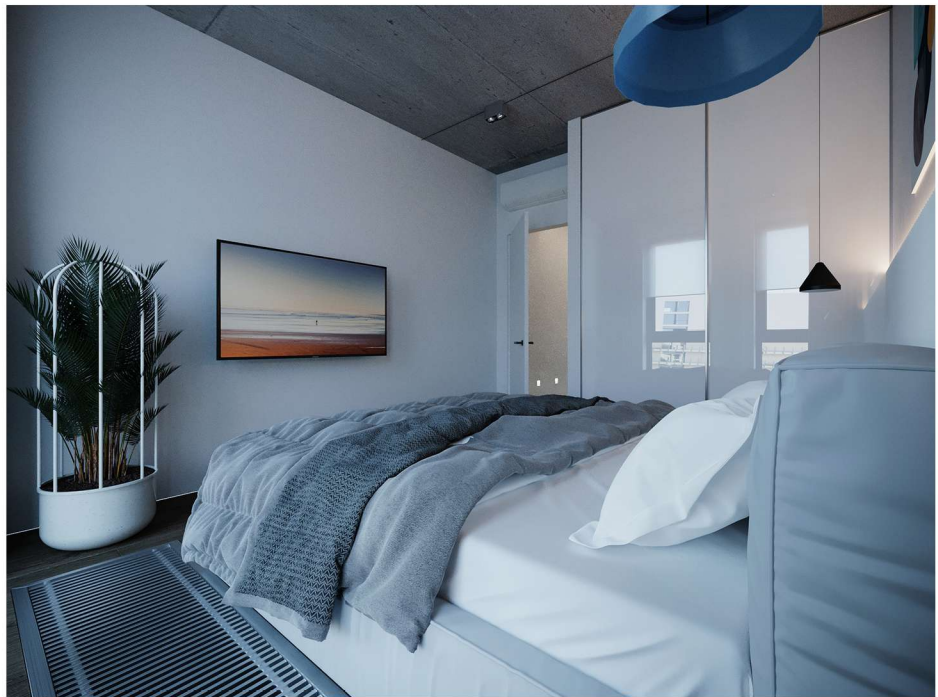
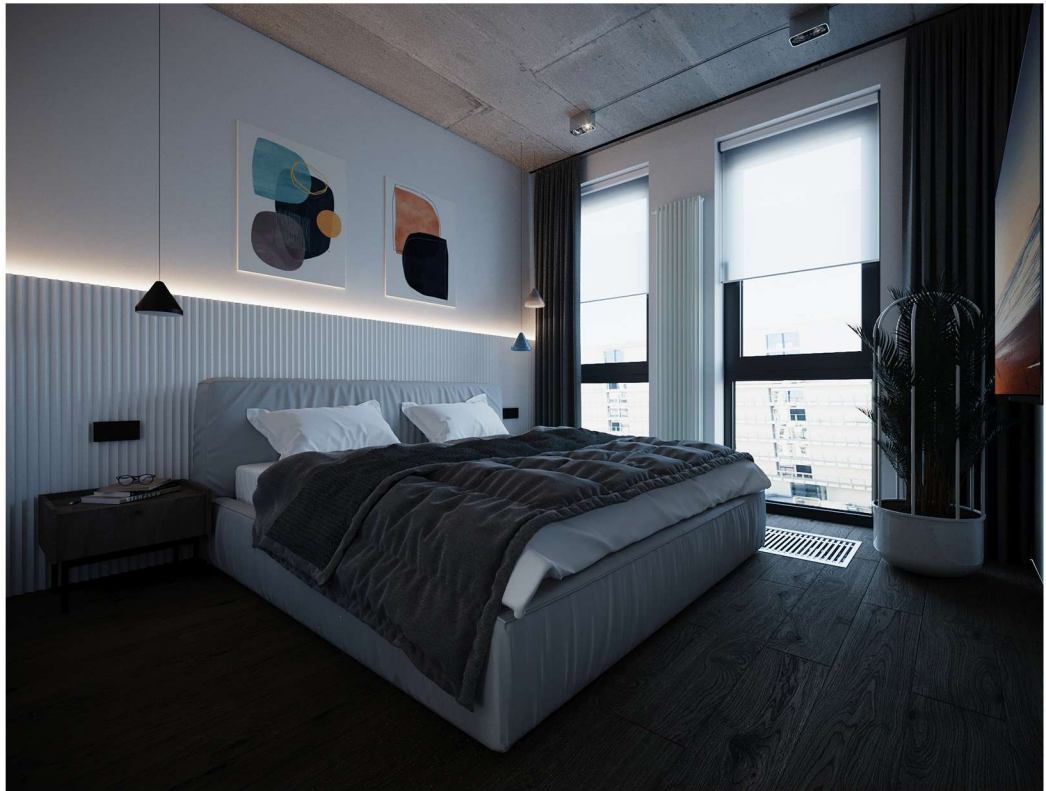
CONTENT

1-6	Visualizations
7	Measurement plan
8	Dismantling plan
9	Installation plan
10	Plan after redevelopment
11	Ceiling plan
12	Floor plan
13	Warm floor plan
14	Specification of doors
15	Electrical equipment plan with furniture
16	Electrical Linkage plan
17	Plan of lighting equipment with furniture
18	Plan of lighting equipment with bindings
19	Lamps and switch groups plan
20	Sanitary outlets plan
21	Ventilation and heating equipment plan
22	Wall scans. Halway
23-24	Wall scans. living room-kitchen
25	Wall scans. Bedroom
26-27	Wall scans. Bathrooms



HALLWAY

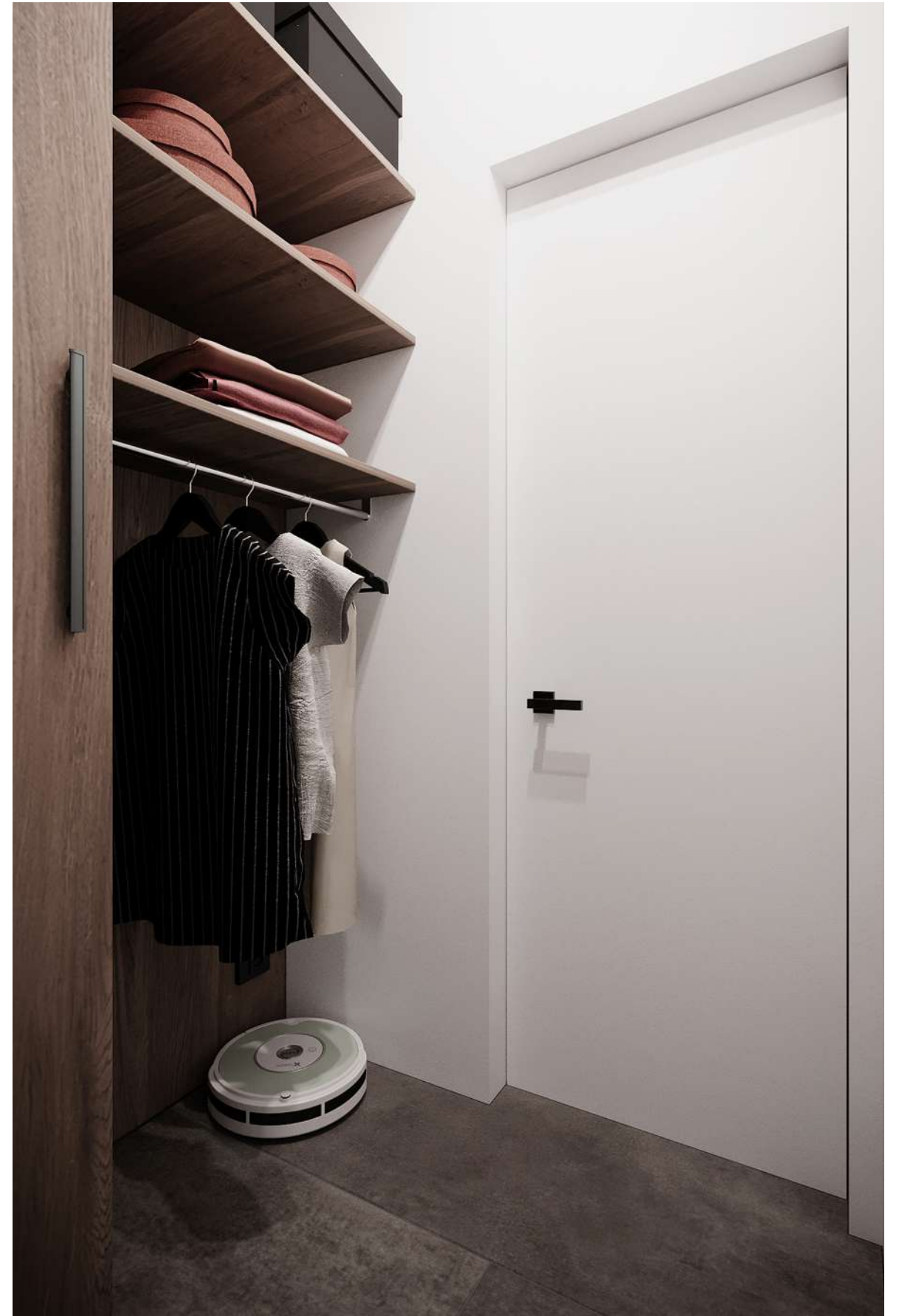




BEDROOM

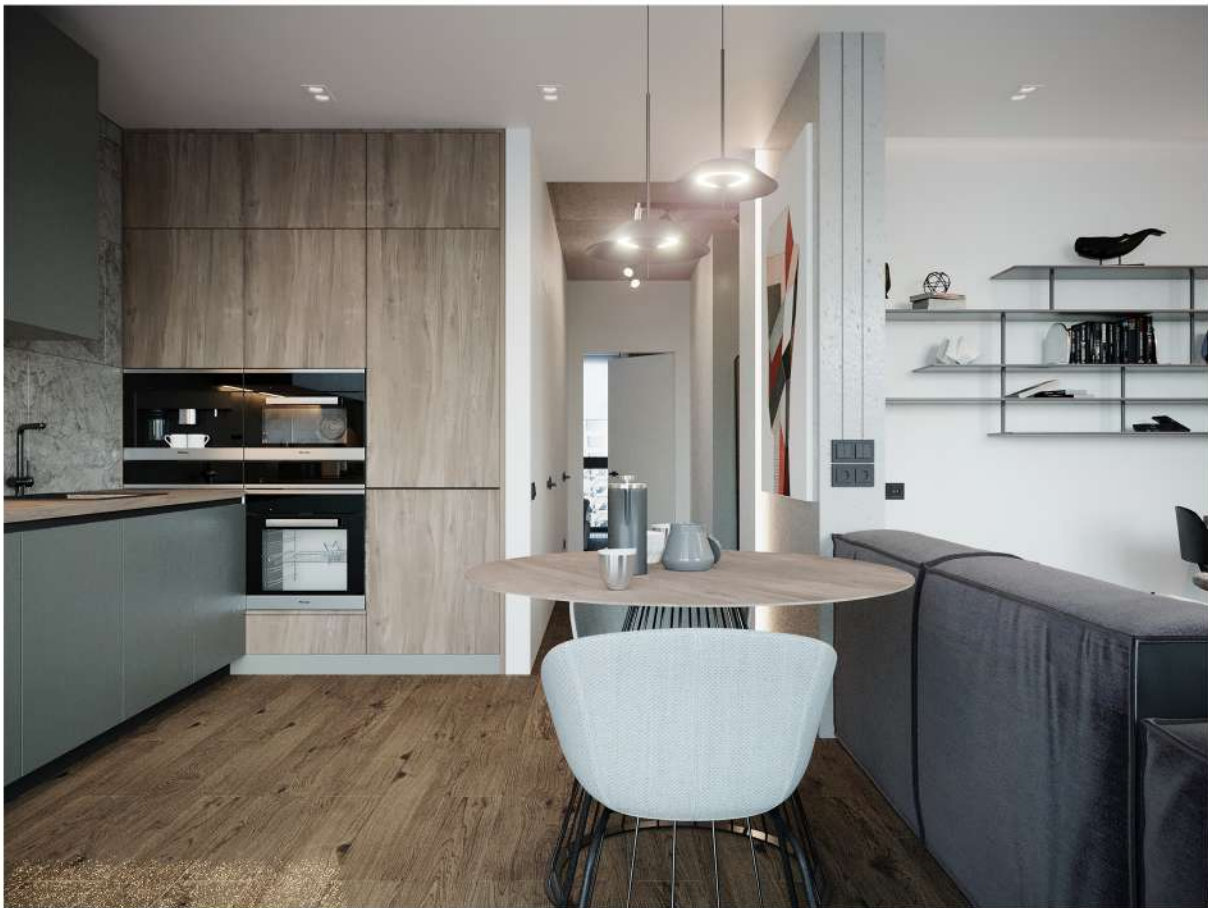


LAUNDRY





BATHROOM

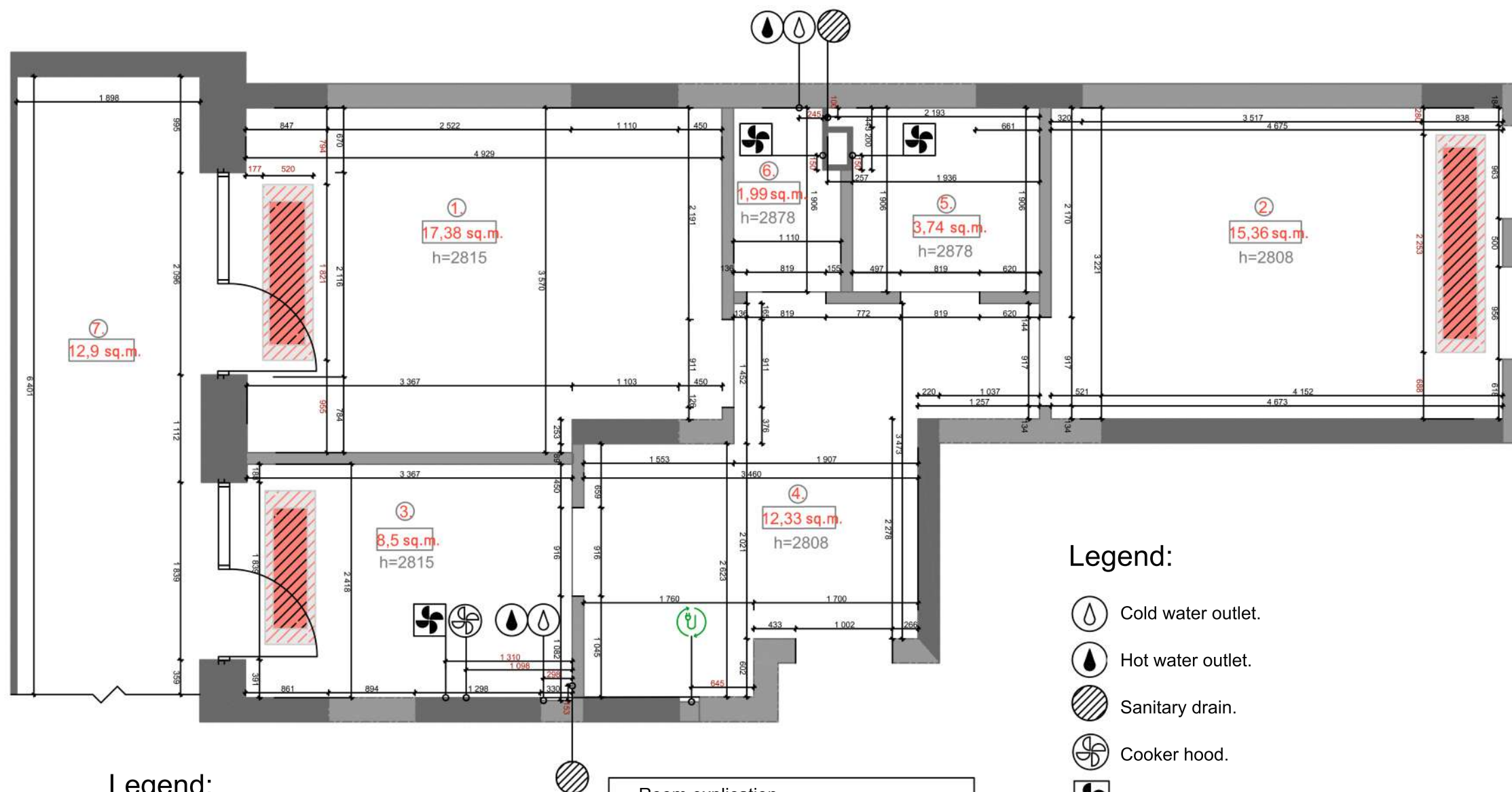


KITCHEN &
LIVING ROOM

KITCHEN & LIVING ROOM



MEASUREMENT PLAN



Legend:

- Brick walls;
- Bearing, monolithic walls;
- Window;
- Doorways.

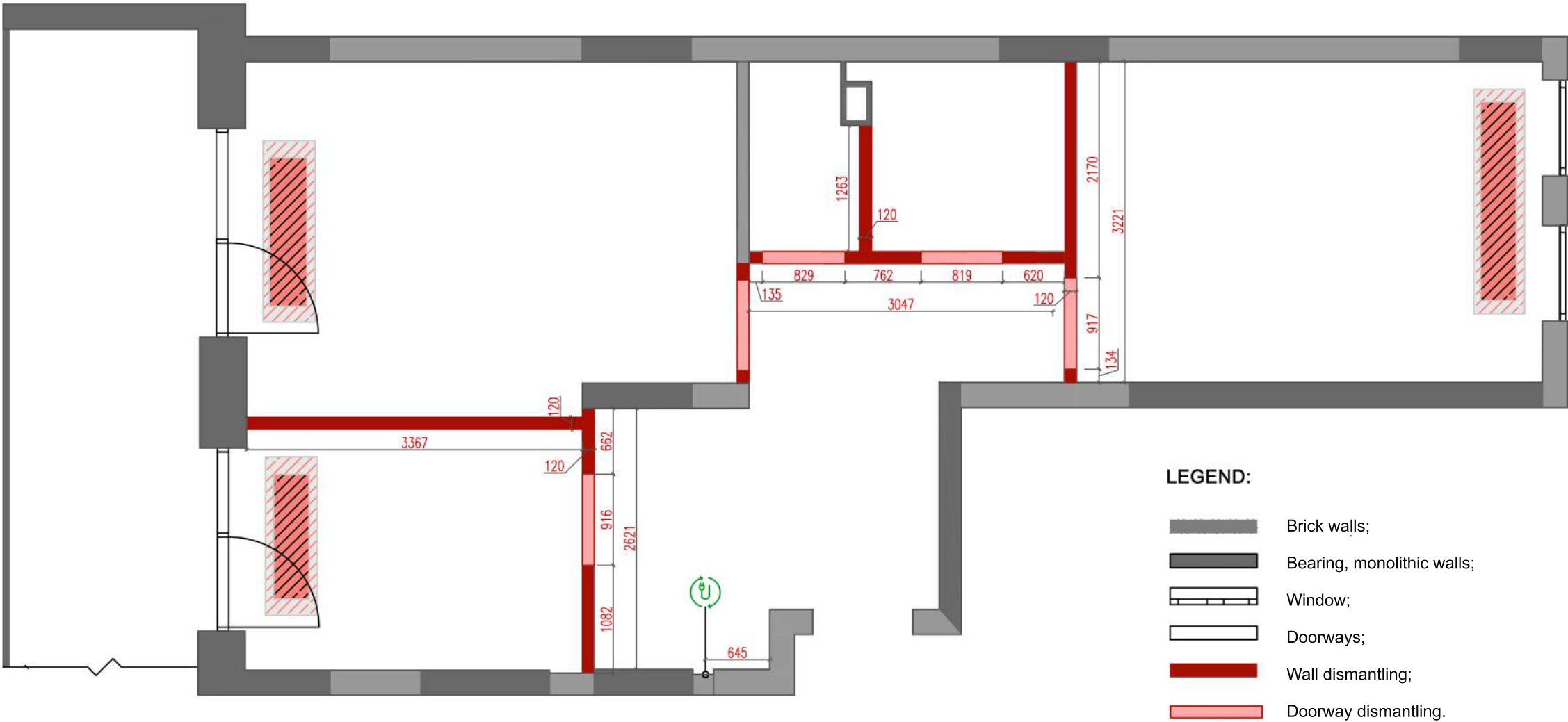
Room explication

	Room explication	
1.	Living room	17,38 sq.m.
2.	Bedroom	15,36 sq.m.
3.	Kitchen	8,5 sq.m.
4.	Hallway	12,33 sq.m.
5.	Bathroom №1	3,74 sq.m.
6.	Bathroom №2	1,9 sq.m.
7.	Balcony	12,9 sq.m.
8.	Total area	72,2 sq.m.

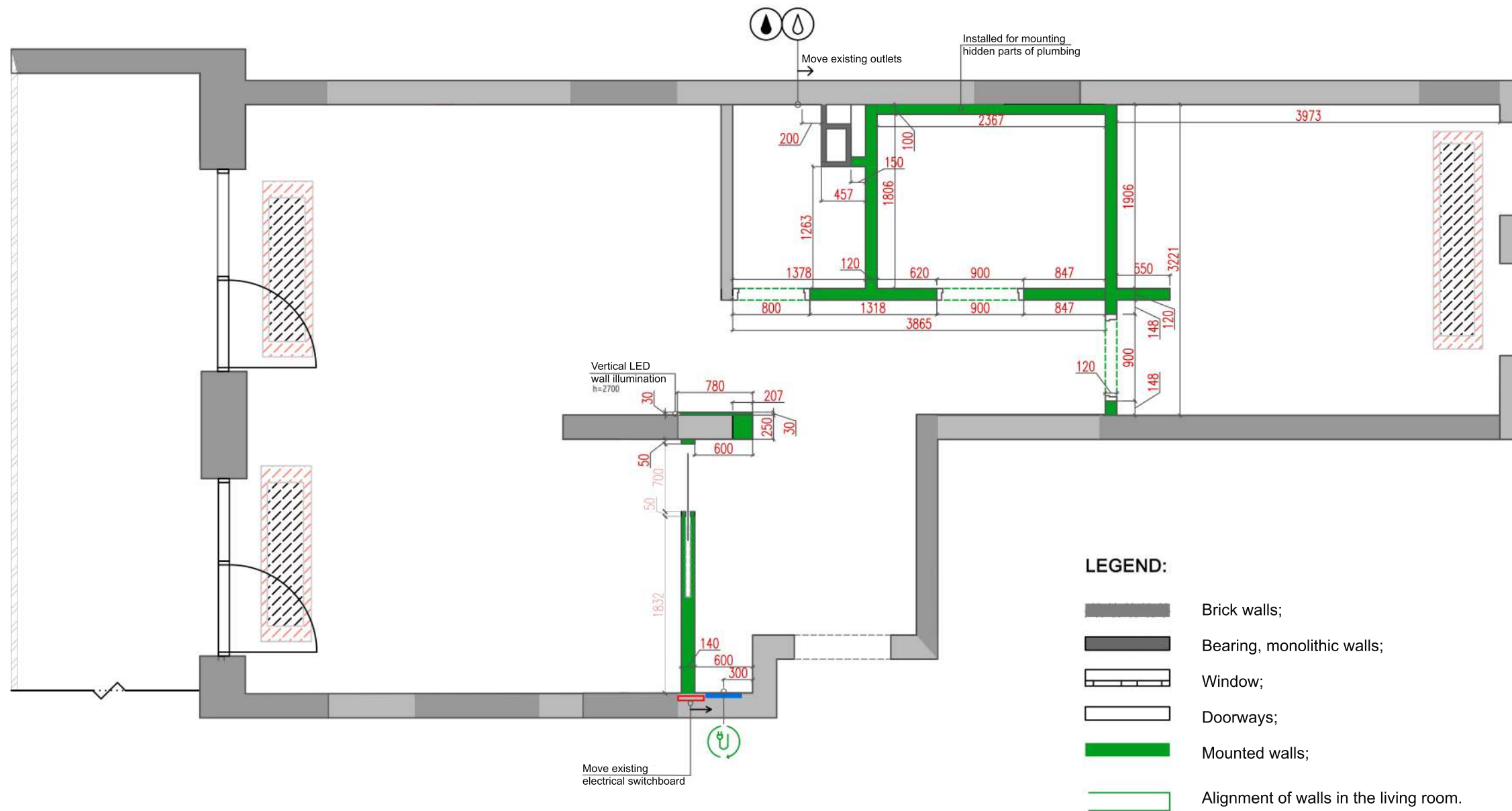
Legend:

- Cold water outlet.
- Hot water outlet.
- Sanitary drain.
- Cooker hood.
- Ventilation.
- Switch box 300x345.
- Floor heating radiator.

DISMANTLING PLAN



INSTALLATION PLAN

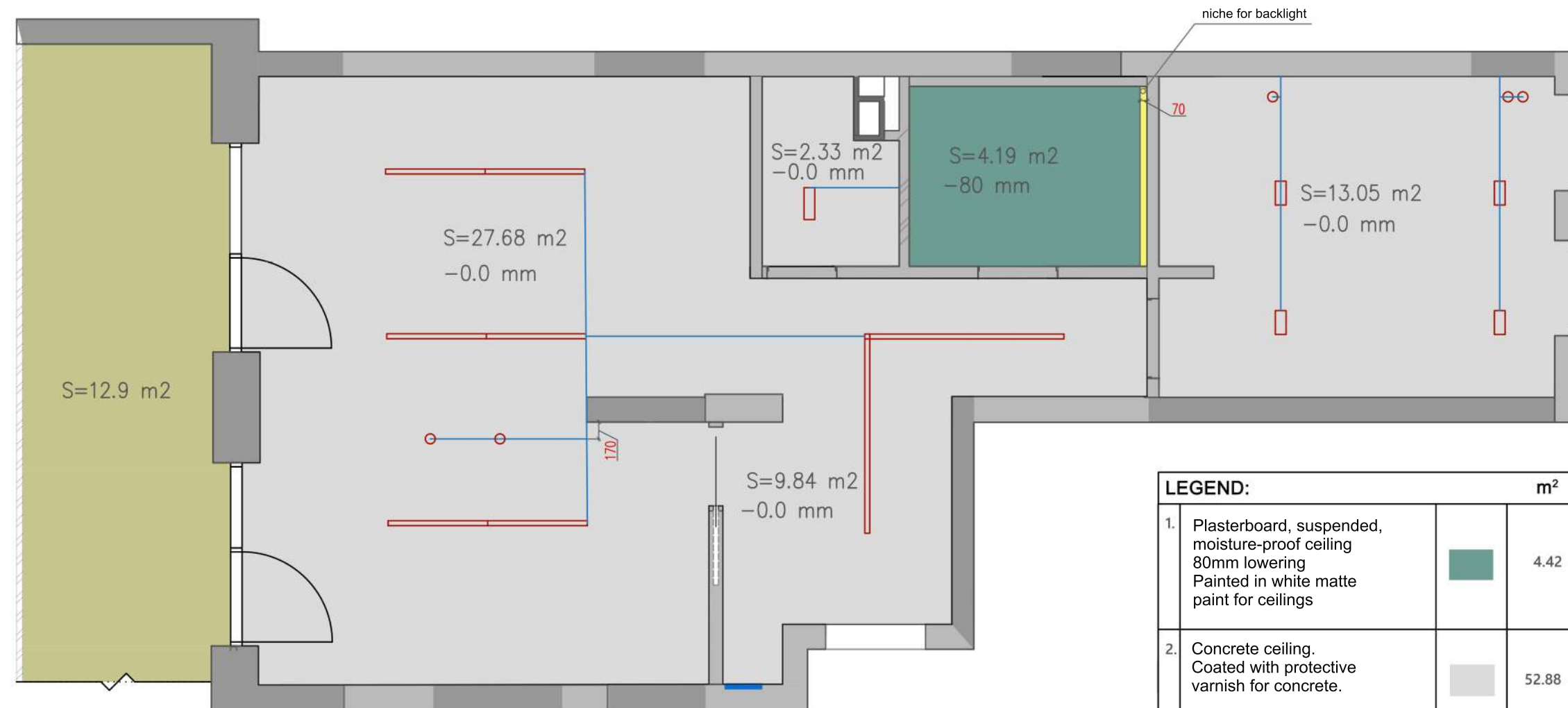
**Notes:**

1. Read the plan together with the drawing of the basic redevelopment, the installation plan, the development of the walls and the plan of the location and opening of the doors.
2. Mount partitions from preserved bricks.
For the rest, use drywall. See dismantling plan.
3. Level the wall in the living room with drywall.

PLAN OF THE PREMISES AFTER REDEVELOPMENT



CEILING PLAN

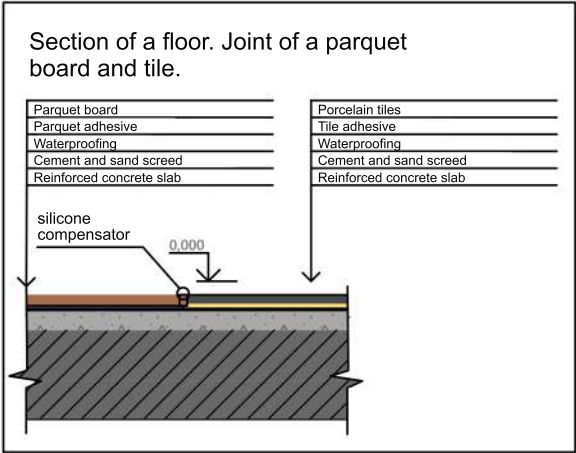
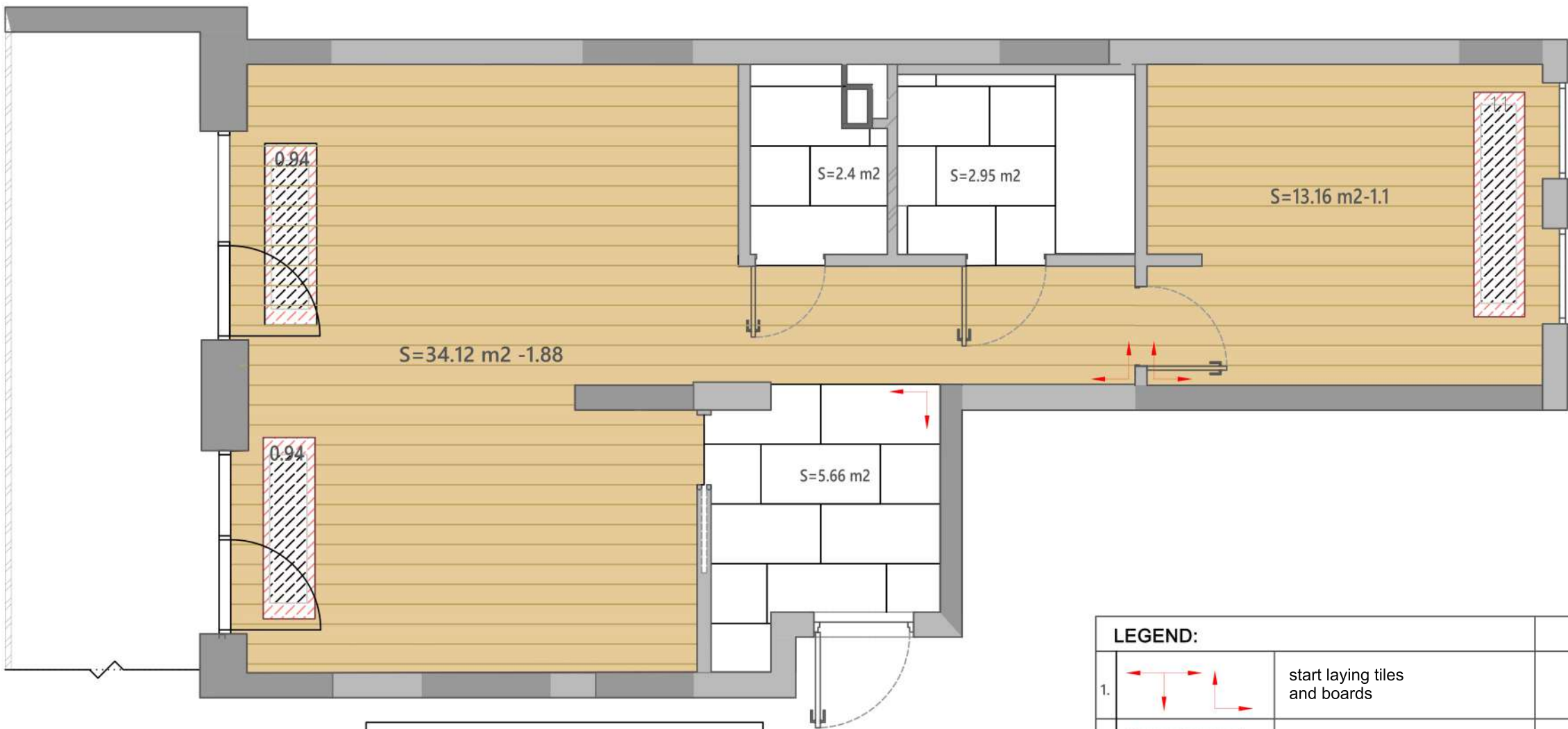


NOTES:

1. This drawing should be read in conjunction with the layout plan of the lighting devices and the HVC plan.
2. Lowering the ceiling by 80mm in the bathroom and by 100mm in the kitchen-living room.
3. The level of the existing ceiling is taken as 0.00.

LEGEND:		m²
1.	Plasterboard, suspended, moisture-proof ceiling 80mm lowering Painted in white matte paint for ceilings	4.42
2.	Concrete ceiling. Coated with protective varnish for concrete.	52.88
3.	Balcony ceiling. Finishing by the developer.	12.9
4.	Niche for lighting and cornice. Plastered and painted with white paint.	
5.	Lighting cable	

FLOOR PLAN



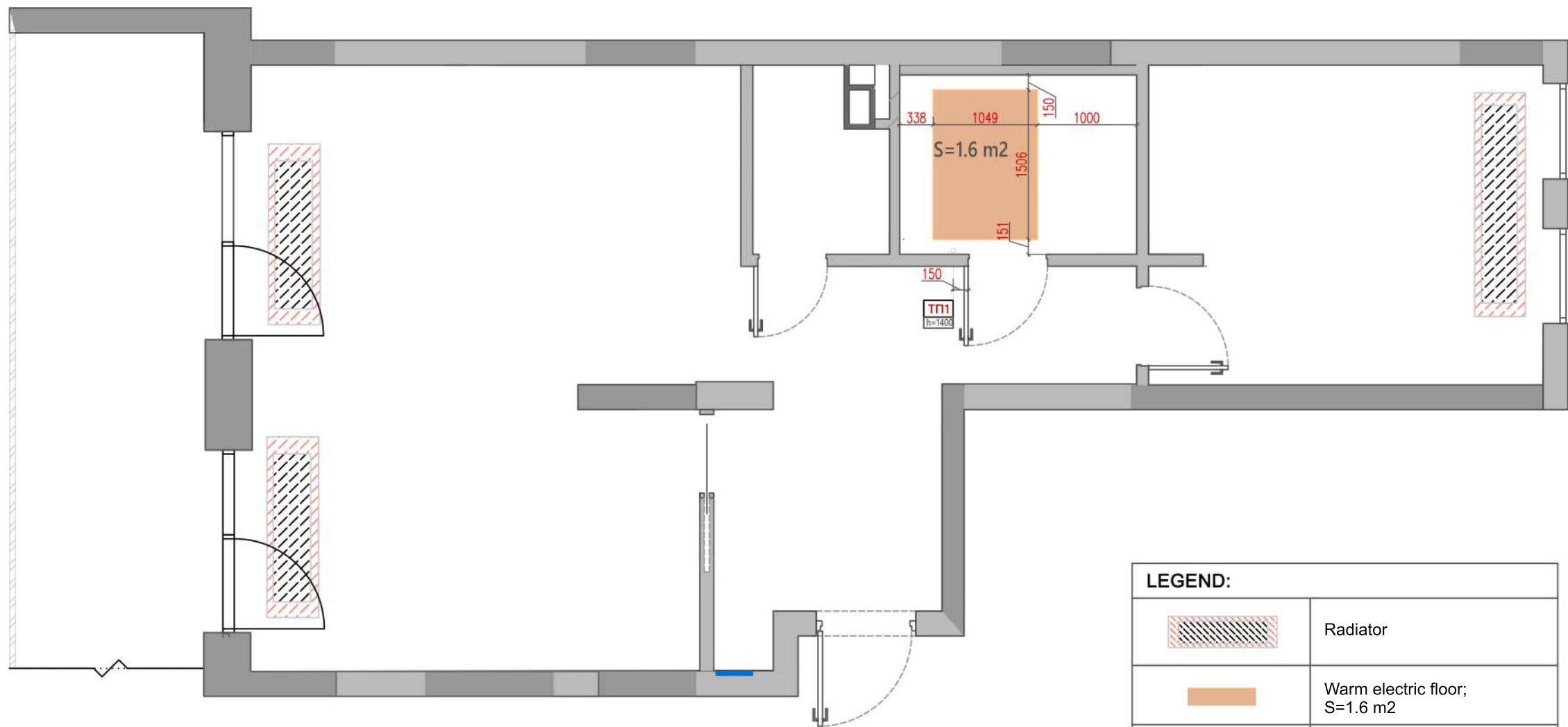
- NOTES:**
- 1. This drawing is read in conjunction with floor plan.
 - 2. This drawing is read in conjunction with floor cut.
 - 3. Install the cork compensator at the junction of the floorboard and tile.
 - 4. All floor coverings must be made in a single plane, without differences and thresholds.
 - 5. All areas are given excluding stock and splicing.

- LEGEND:**
- Brick walls;
 - Bearing, monolithic walls;
 - Window.

LEGEND:			
1.		start laying tiles and boards	
2.		radiator	
3.		parquet board, (thickness) layout by deck, 1/3 shift	44.3 m2
4.		tile (porcelain tile) 1200x600mm, (thickness)	11.01 m2 18 pieces
5.		expansion joint: silicone sealant	
6.		grout for tile joints:	

RC Rybalsky	Page
Floor plan	12

WARM FLOOR PLAN

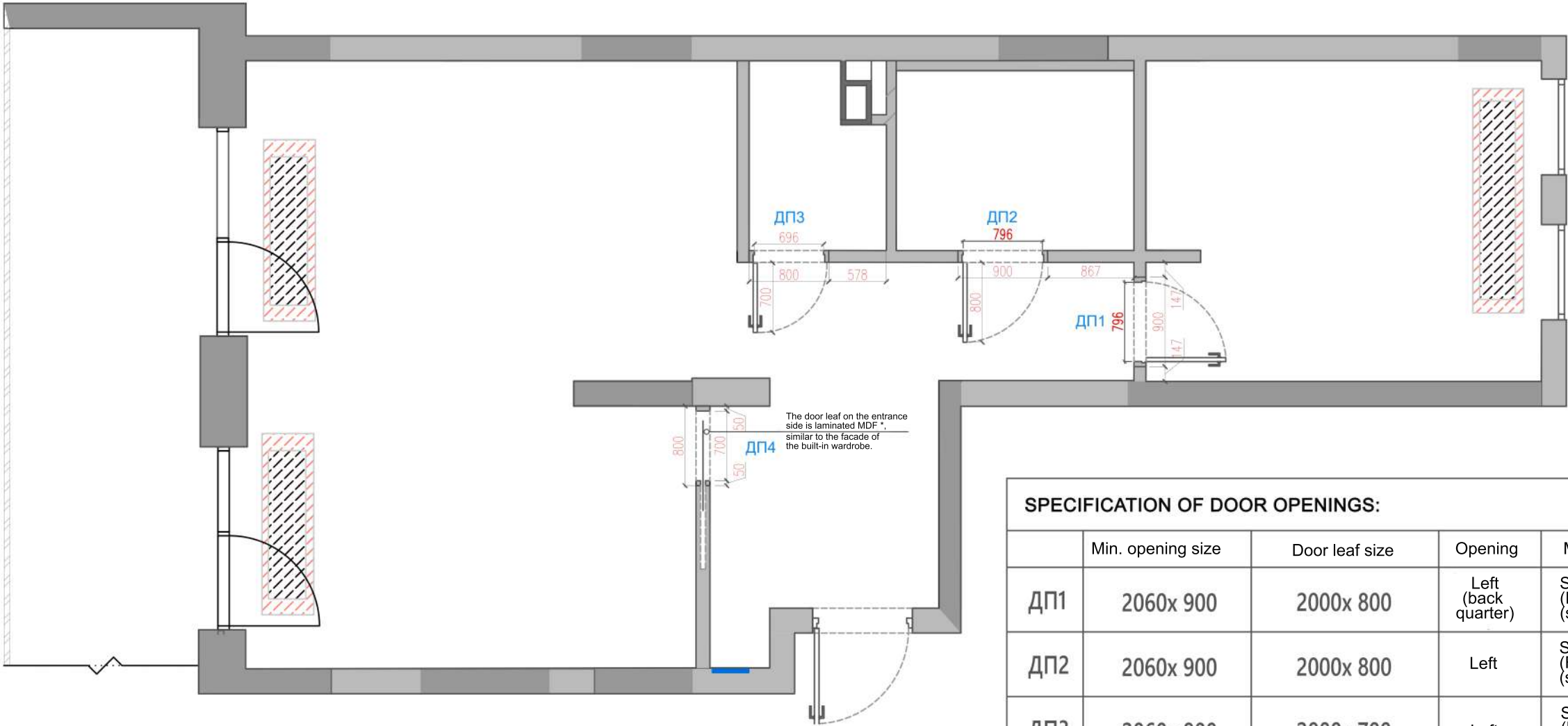


LEGEND:

- 1. To install an electric heat-insulated floor in screed, according to the indicated indents, minimum 150 mm from the walls, 150 mm from the facades.
- 2. The plan is read in accordance with the furniture plan, flooring plan and plumbing equipment plan.

RC Rybalsky	Page
Warm floor plan	13

SPECIFICATION OF DOORS WITH INDICATION OF DOOR OPENINGS AND MODELS



SPECIFICATION OF DOOR OPENINGS:				
	Min. opening size	Door leaf size	Opening	Manufacturer
ДП1	2060x 900	2000x 800	Left (back quarter)	SECRET DOORS (FC Tkachenko) r. Dnieper (soil for further finishing)
ДП2	2060x 900	2000x 800	Left	SECRET DOORS (FC Tkachenko) r. Dnieper (soil for further finishing)
ДП3	2060x 800	2000x 700	Left	SECRET DOORS (FC Tkachenko) r. Dnieper (soil for further finishing)
ДП4	2060x 800	2000x 700	Left	



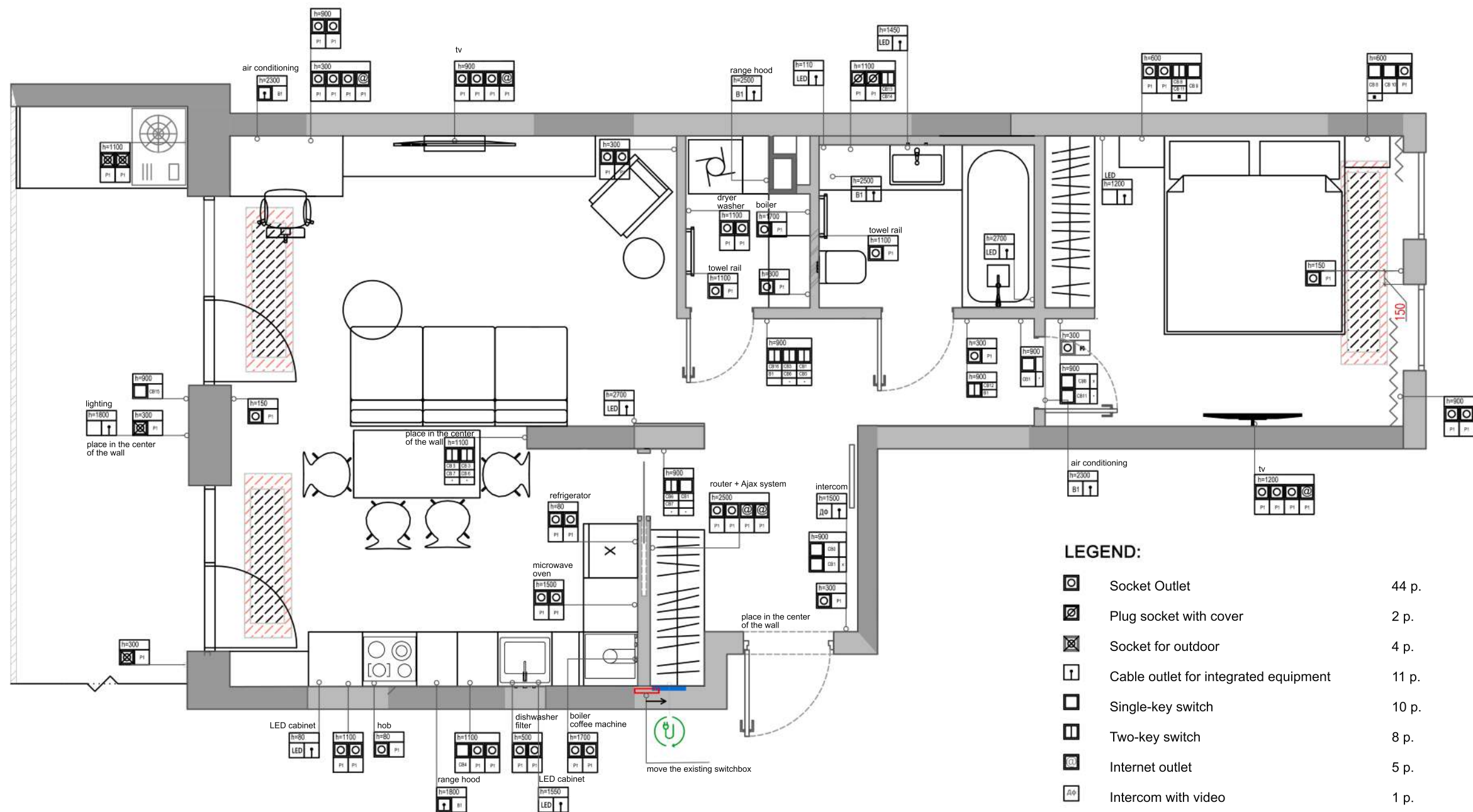
The door leaf on the entrance side is laminated MDF *, similar to the facade of the built-in wardrobe.

NOTES:

- 1. The plan is read in conjunction with the drawing of the basic redevelopment, installation plan, wall scans.
- 2. Observe the doorway dimensions of 800mm and 900mm for mounting standard SECRET DOORS flush mounted door frames (Fk Tkachenko).
- 3. The minimum height of door openings is 2060 mm with a door leaf height of 2000 mm.
- 4. The door leaf ДП4 from the entrance hall - laminated MDF *, similar to the facade of the built-in wardrobe.

RC Rybalsky	Page
Specification of doors with indication of door openings and models	14

ELECTRICAL EQUIPMENT PLAN WITH FURNITURE



NOTES:

1. All sockets must be grounded.
2. Read the drawing together with the plan of the groups of fixtures, the furniture plan. And also the plan for heating ventilation and air conditioning.
3. Heights are indicated from the level of a clean floor.

RC Rybalsky

Electrical equipment plan with furniture

Page

15

ELECTRIC BINDING PLAN



NOTES:

1. All sockets must be grounded.
2. Read the drawing together with the fixture group plan, the furniture plan and heating, ventilation and air conditioning plan.
3. Heights are indicated from the level of a clean floor.

LEGEND:

	Socket Outlet	44 p.
	Plug socket with cover	2 p.
	Outdoor socket	4 p.
	Cable outlet for integrated equipment	11 p.
	Single-key switch	10 p.
	Two-key switch	8 p.
	Internet outlet	5 p.
	Intercom with video	1 p.
	Cruciform switch	
	Cross switch	
	Single-key switch, general	
	Switch box	1 p.

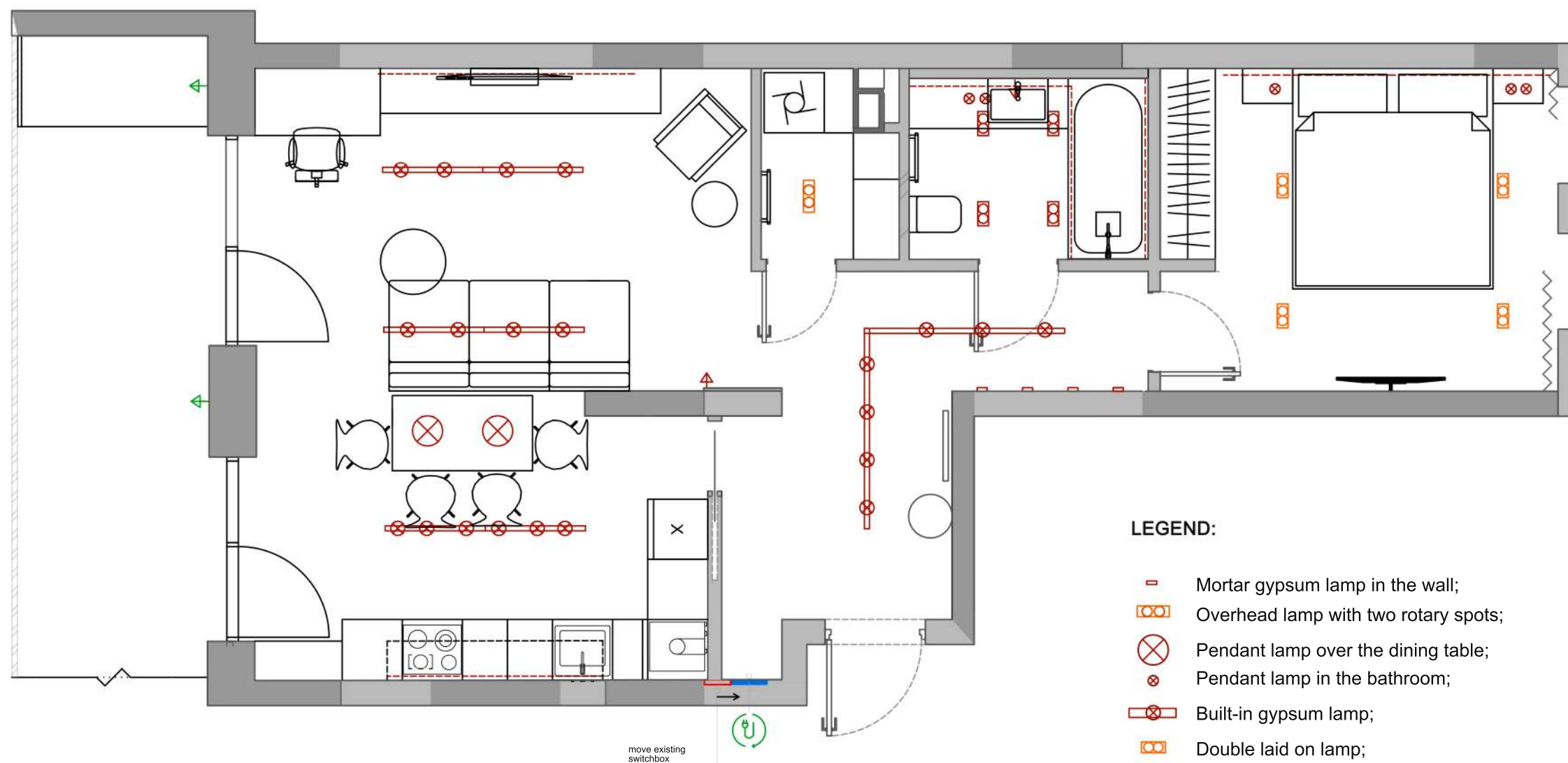
RC Rybalsky

Electric binding plan











Page

16

FURNITURE LIGHTING EQUIPMENT PLAN



LEGEND:

-  Mortar gypsum lamp in the wall;
-  Overhead lamp with two rotary spots;
-  Pendant lamp over the dining table;
-  Pendant lamp in the bathroom;
-  Built-in gypsum lamp;
-  Double laid on lamp;
-  Double built-in lamp;
-  LED backlight
-  LED backlight built into the wall;
-  Street wall lamp.

NOTES:

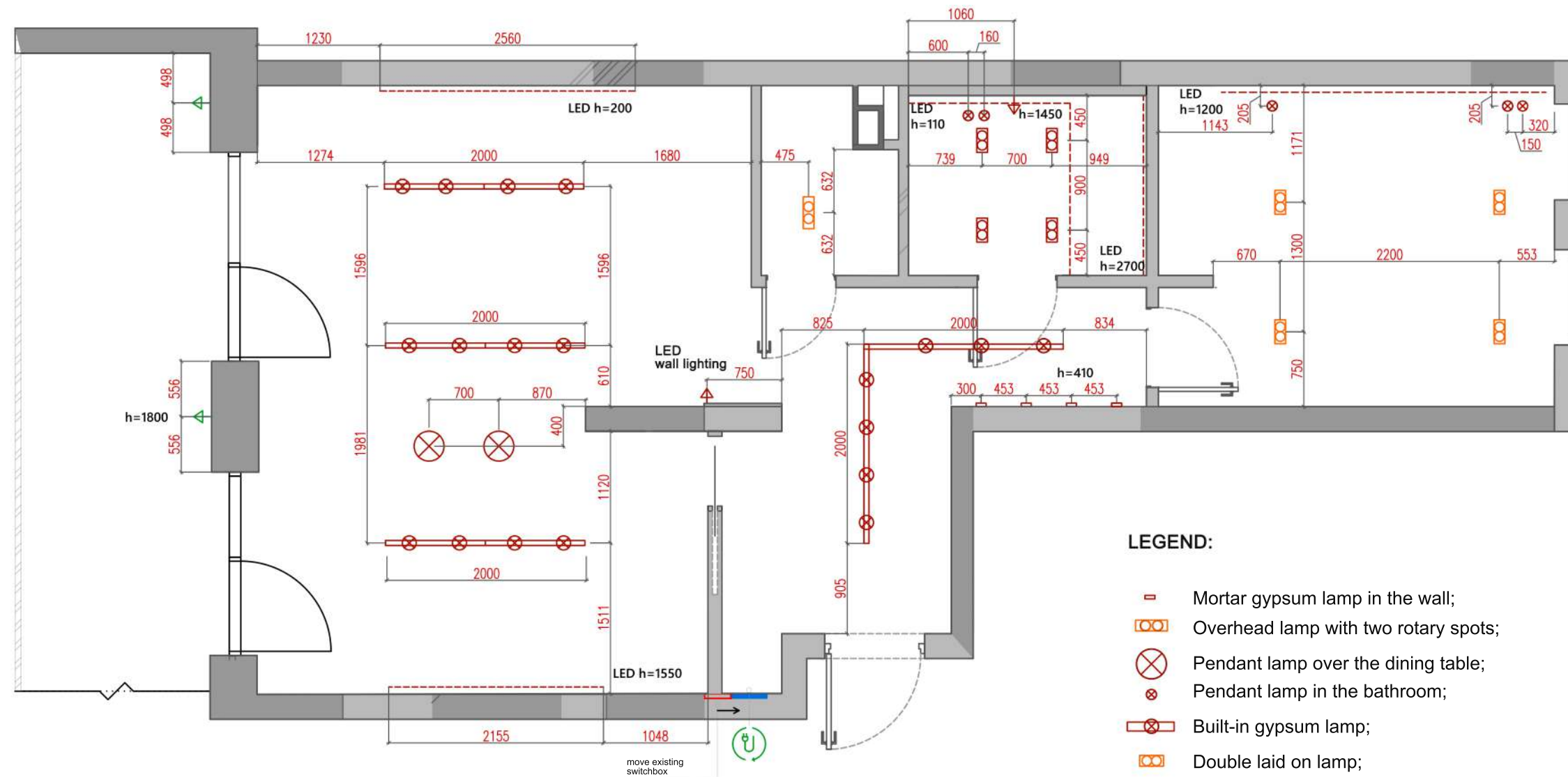
1. All sockets must be grounded.
2. Read the drawing together with the fixture group plan, the furniture plan and heating, ventilation and air conditioning plan.
3. Heights are indicated from the level of a clean floor.

RC Rybalsky

Page

Furniture lighting equipment plan

17

FURNITURE LIGHTING EQUIPMENT PLAN
WITH BINDINGS

NOTES:

1. All sockets must be grounded.
2. Read the drawing together with the fixture group plan, the furniture plan and heating, ventilation and air conditioning plan.
3. Heights are indicated from the level of a clean floor.

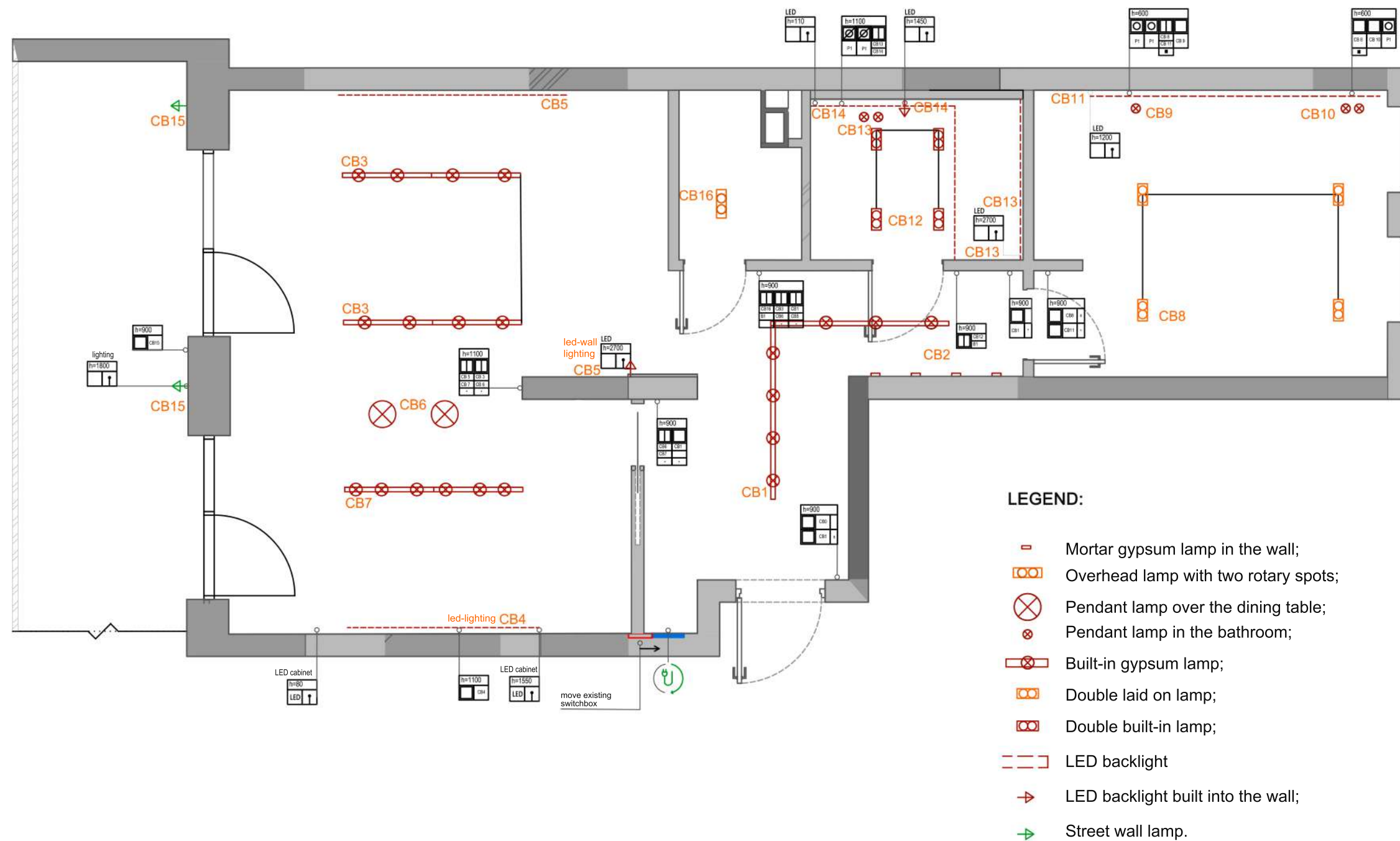
RC Rybalsky

Furniture lighting equipment plan with bindings

Page

18

LAMPS AND SWITCH GROUPS PLAN



NOTES:

1. All sockets must be grounded.
2. Read the drawing together with the fixture group plan, the furniture plan and heating, ventilation and air conditioning plan.
3. Heights are indicated from the level of a clean floor.

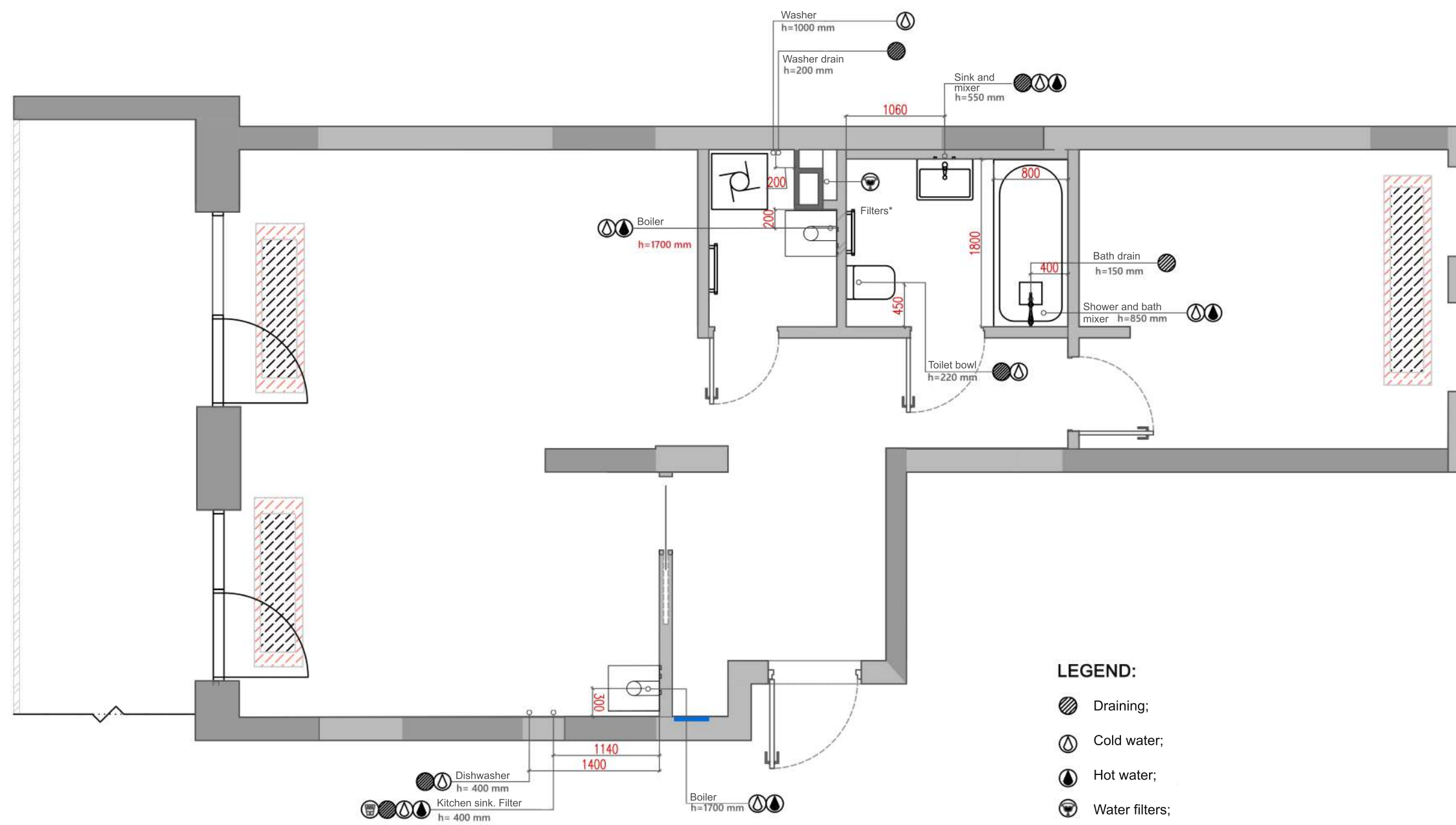
RC Rybalsky

Lamps and switch groups plan

Page

19

SANITARY OUTLETS PLAN



LEGEND:

- Draining;
- Cold water;
- Hot water;
- Water filters;
- Drinking water filter;

NOTES:

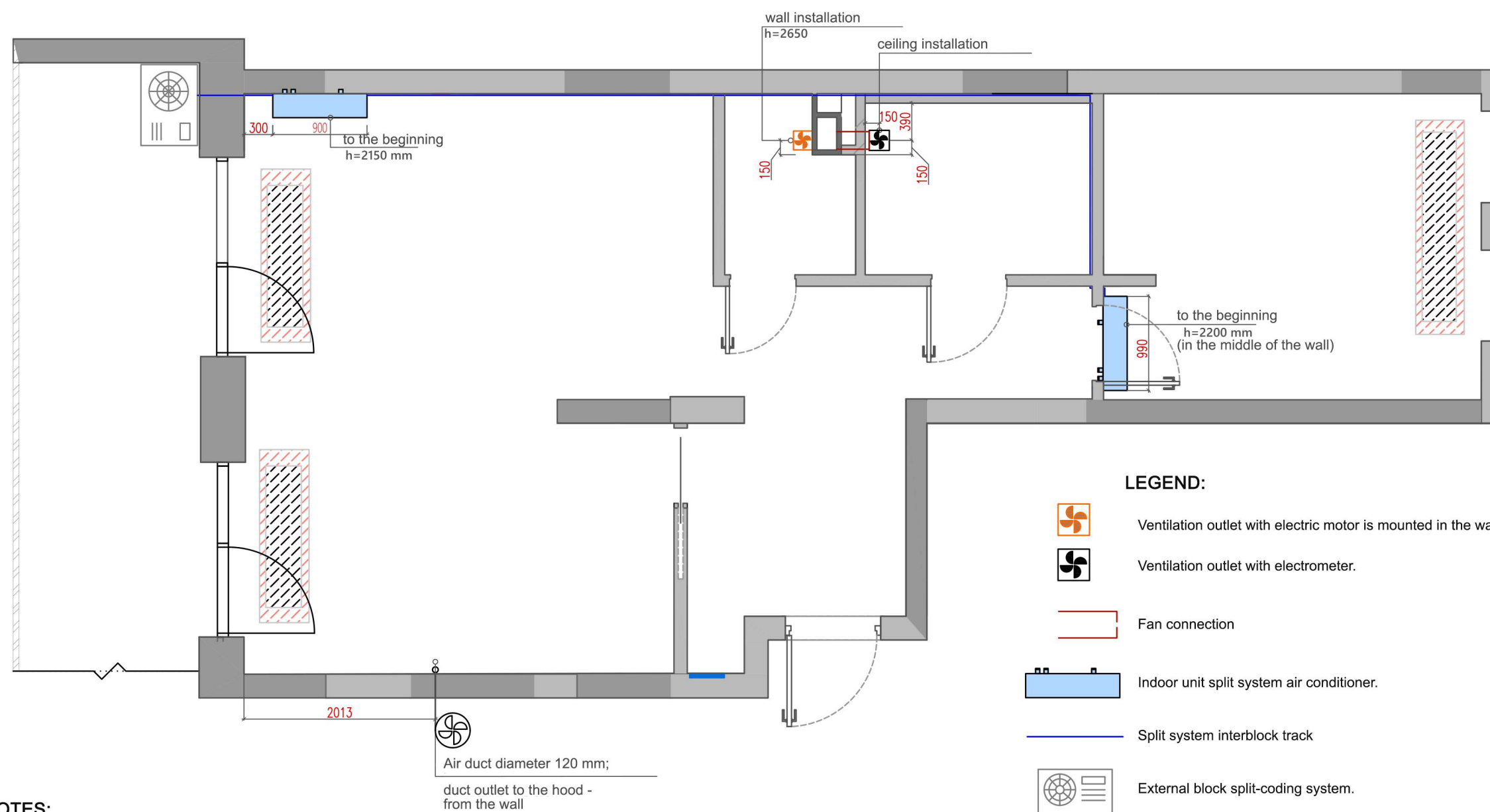
1. The height is indicated from the level of a clean floor.
2. Read together with the plan of sanitary equipment and its complete set.
3. When installing equipment, read the technical specifications of a single product.
4. Read in conjunction with wall scans and visualizations.
5. The height of the water outlet for the toilet must comply with the technical requirements of the selected installation model.

RC Rybalsky

Page

Layout plan for plumbing fixtures with dimensions

20

VENTILATION AND
HEATING EQUIPMENT PLAN

NOTES:

1. The external air conditioning block is installed in a special place on the facade of the house.
2. Forced ventilation in the big bathroom is carried out from the ventilation hole in the small bathroom.
3. Pass ventilation boxes inside the false ceiling.
4. Channel for the kitchen hood from the ventilation hole in the living room;
5. Read the plan in conjunction with the layout plan for lighting.

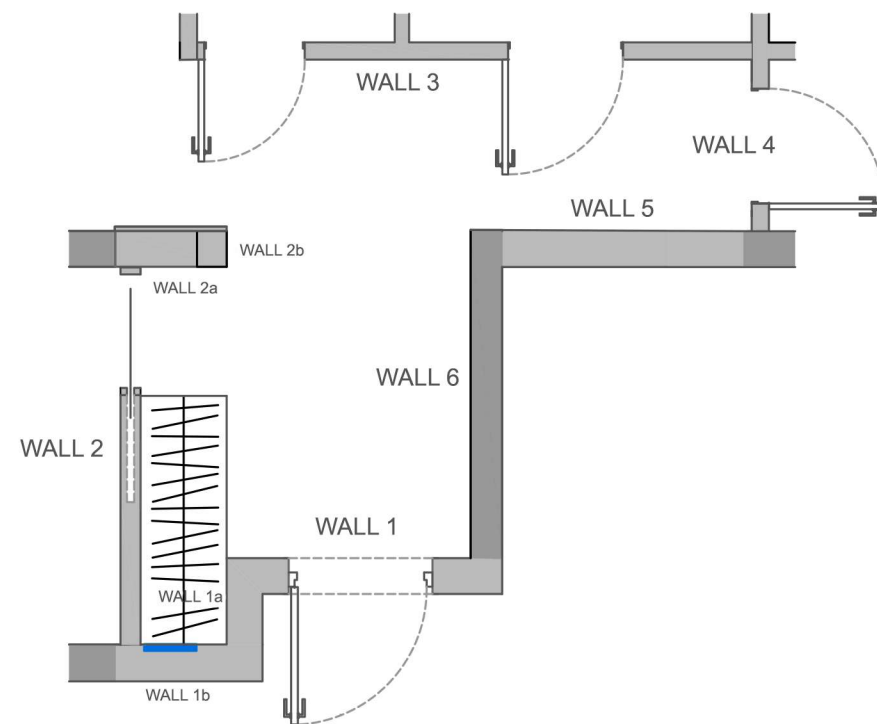
RC Rybalsky

Ventilation and heating equipment plan

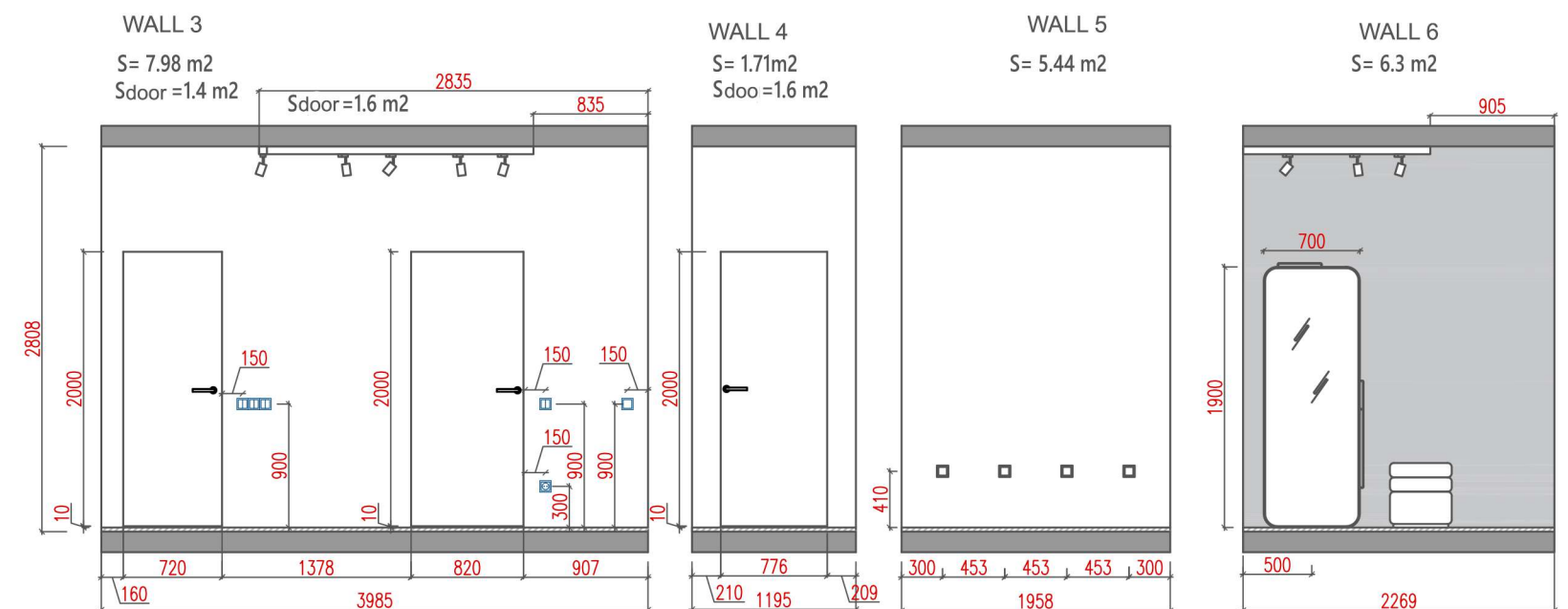
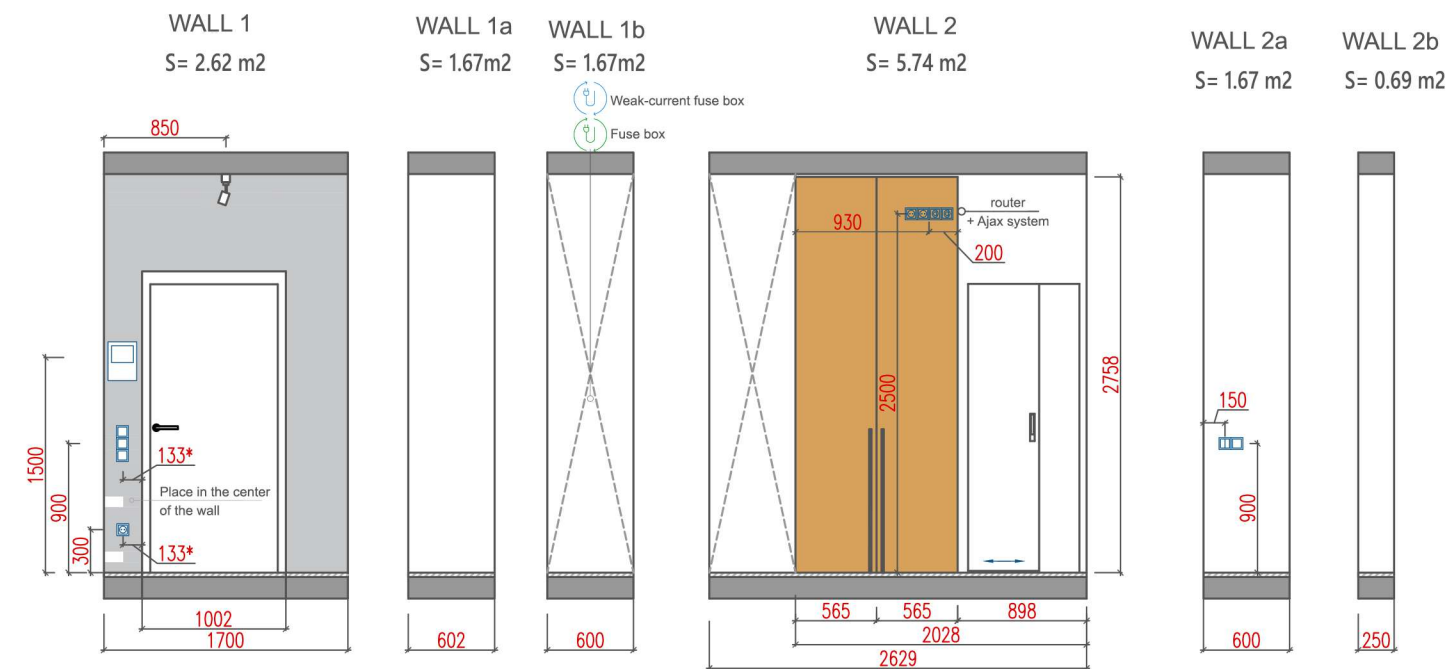
Page

21

WALL SCAN. HALLWAY



TOTAL WALL AREA:
S= 35.54 m2



NOTES:

1. All sizes are final.
2. Dimensions can be adjusted after walls alignment.
3. Check all sizes and marks before the beginning of works (discrepancy of sizes and marks should be agreed with the project manager).
4. The height defined from the clear floor level.
5. Order cabinet furniture after measurement and manufacturers project submission.

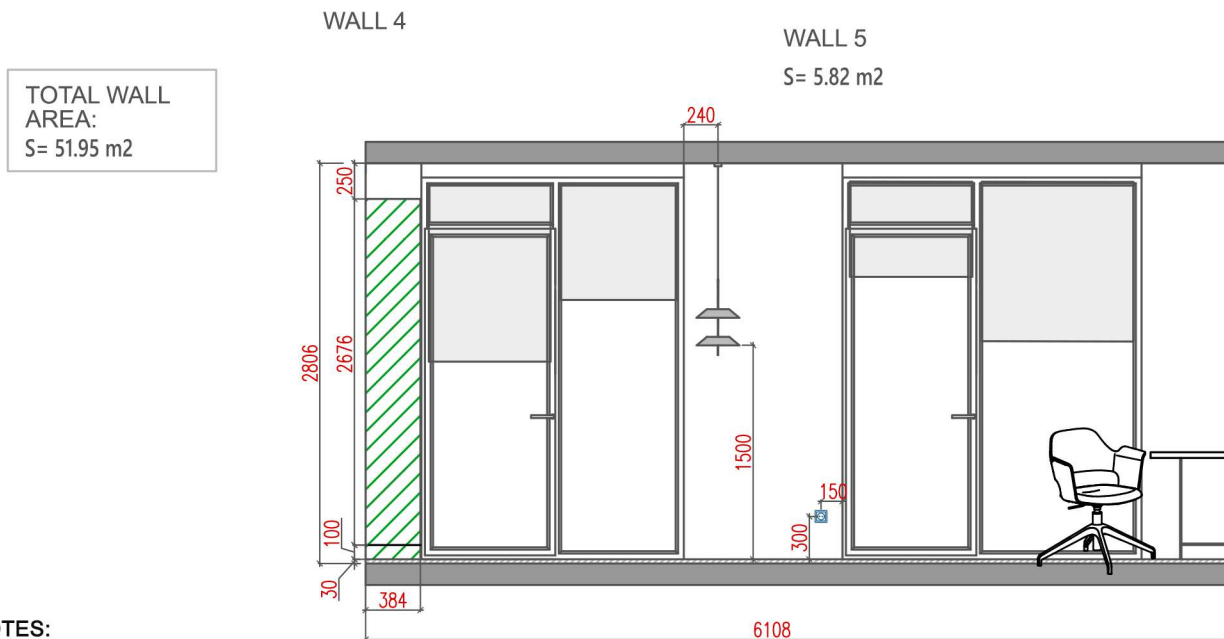
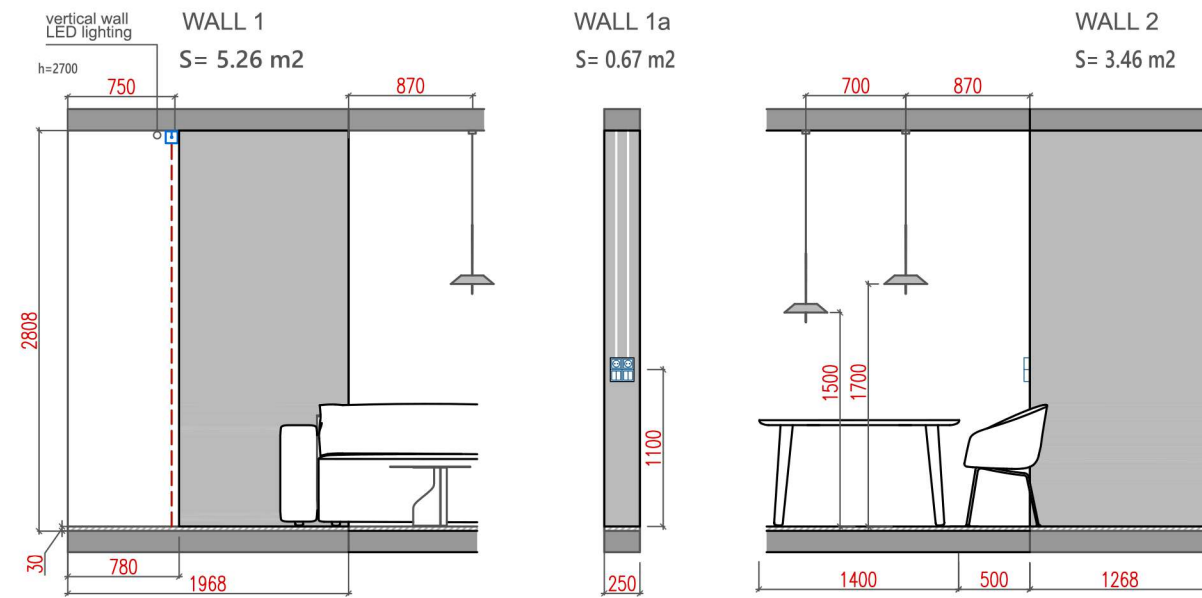
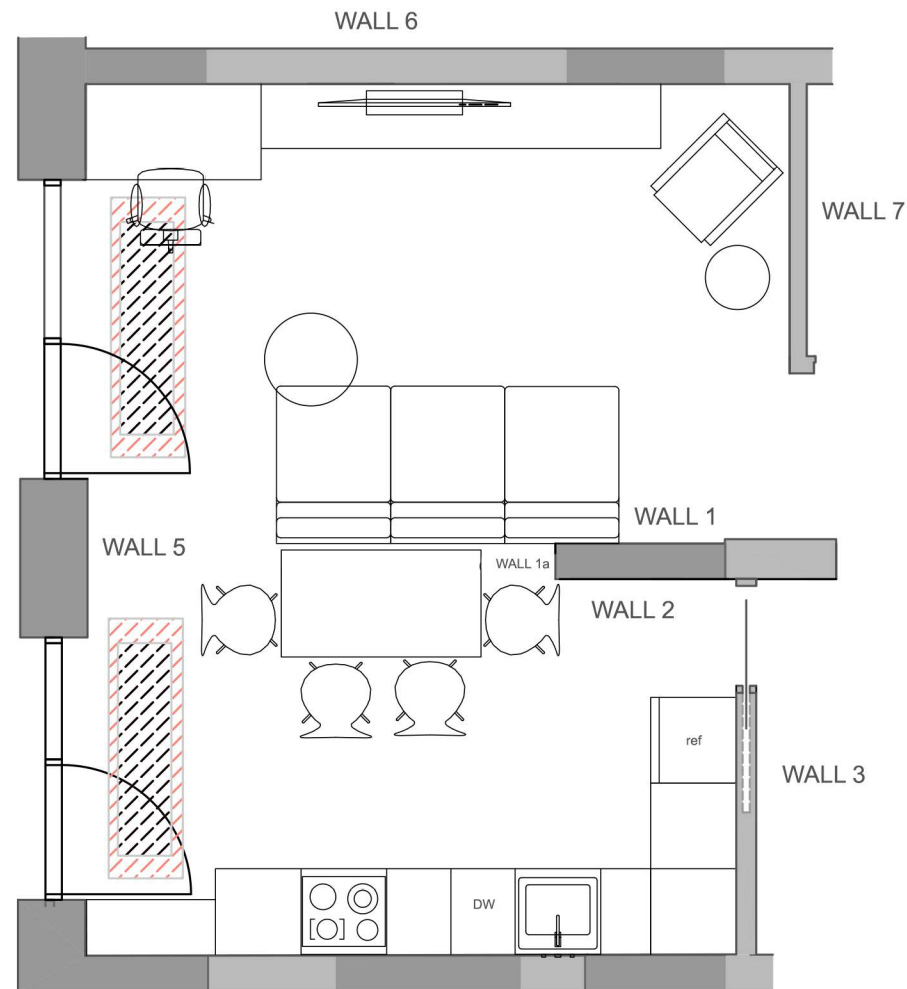
RC Rybalsky

Wall scan. Hallway.

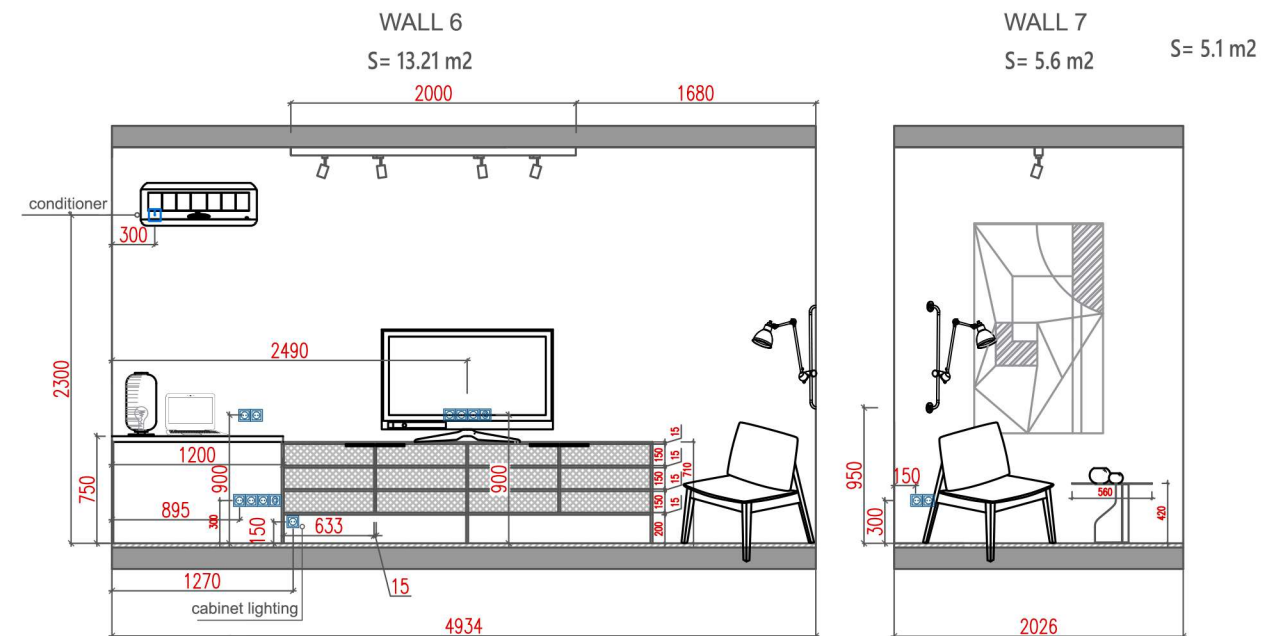
Page

22

WALL SCAN. LIVING ROOM-KITCHEN. PART 1



TOTAL WALL AREA:
S= 51.95 m²



NOTES:

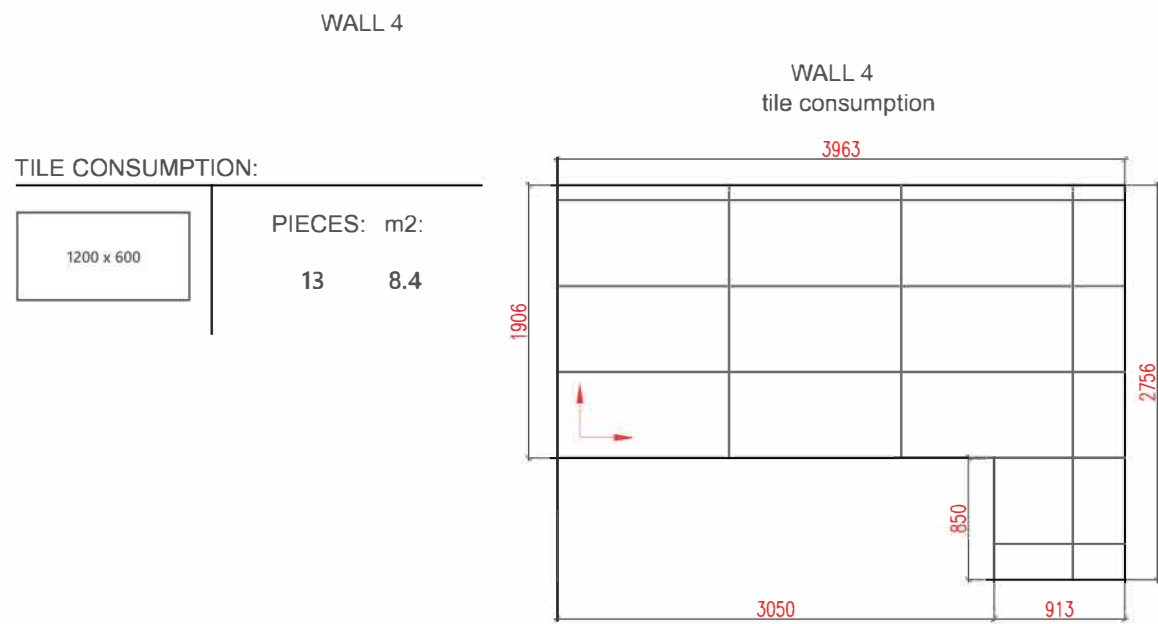
1. All sizes are final.
2. Dimensions can be adjusted after walls alignment.
3. Check all sizes and marks before the beginning of works (discrepancy of sizes and marks should be agreed with the project manager).
4. The height defined from the clear floor level.
5. For plumbing outlets use technical drawings of plumbing manufacturers
6. Plumbing bindings are in the plans and scans of the project
7. Order cabinet furniture after measurement and manufacturers project submission.

RC Rybalsky

Wall scan. Living room-kitchen. Part 1

Page

23



1. All sizes are final.
2. Dimensions can be adjusted after walls alignment.
2. Check all sizes and marks before the beginning of works (discrepancy of sizes and marks should be agreed with the project manager).
4. The height defined from the clear floor level.
5. For plumbing outlets use technical drawings of plumbing manufacturers.
6. Plumbing bindings are in the plans and scans of the project.
7. Order cabinet furniture after measurement and manufacturers project submission.

[illegible]

RC Rybalsky	Page
Wall scan. Living room-kitchen. Part 2	24

WALL SCAN. BEDROOM

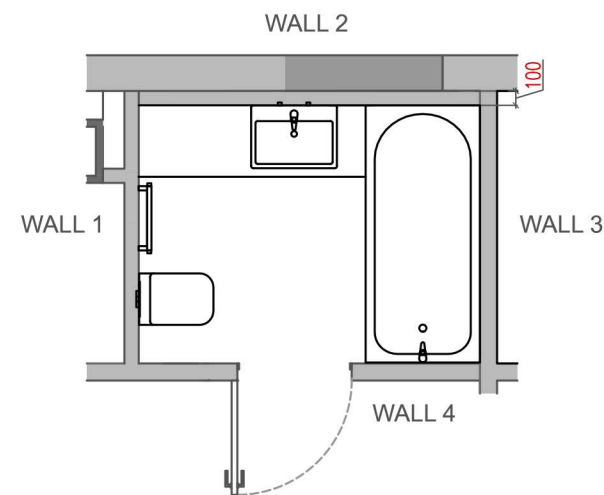


TOTAL
WALL AREA:
S= 36.54 m²

- NOTES:**
1. All sizes are final.
 2. Dimensions can be adjusted after walls alignment.
 3. Check all sizes and marks before the beginning of works (discrepancy of sizes and marks should be agreed with the project manager).
 4. The height defined from the clear floor level.
 5. Order cabinet furniture after measurement and manufacturers project submission.


RC Rybalsky	Page
Wall scan. Bedroom.	25

WALL SCAN. BATHROOM 1



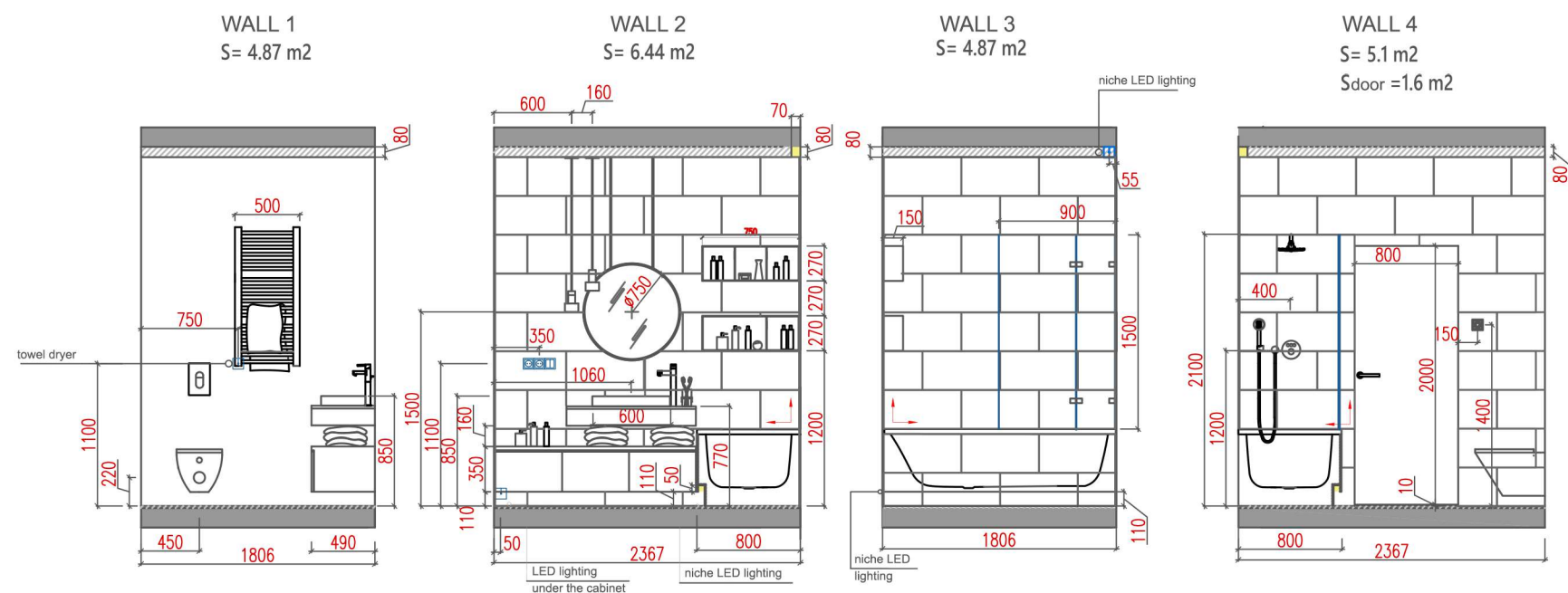
TOTAL
WALL AREA:
S= 21.28 m2

TILE CONSUMPTION:

WALLS:	TYPE:	PIECES:	m2:
	Zeus ceramics ZNXCL9BR	86	14.9

NOTES:

1. All sizes are final.
2. Dimensions can be adjusted after walls alignment.
3. Check all sizes and marks before the beginning of works (discrepancy of sizes and marks should be agreed with the project manager).
4. The height defined from the clear floor level.
5. For plumbing outlets use technical drawings of plumbing manufacturers
6. Plumbing bindings are in the plans and scans of the project
7. Order cabinet furniture after measurement and manufacturers project submission.



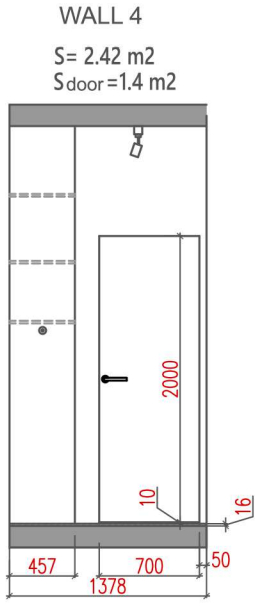
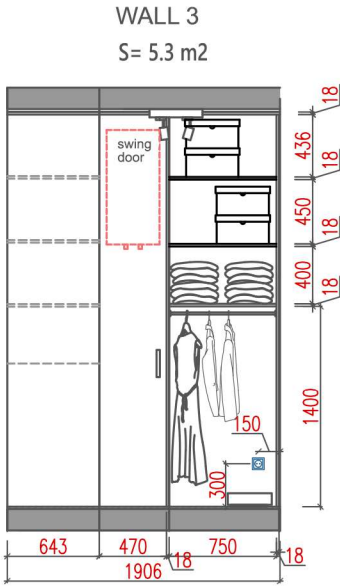
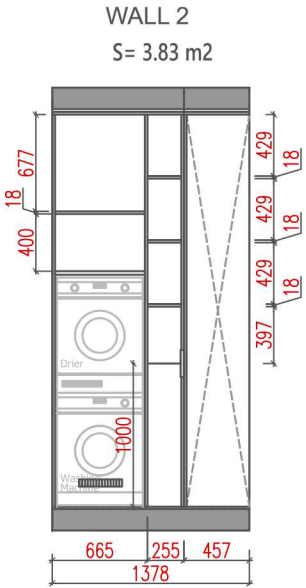
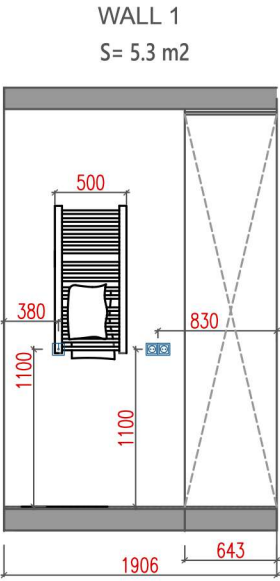
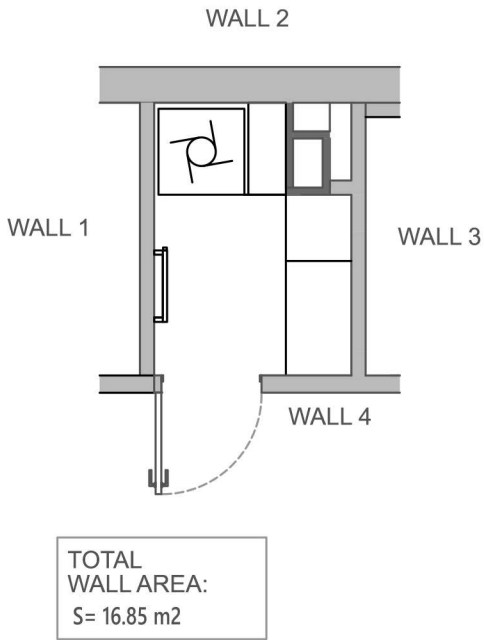
RC Rybalsky

Wall scan. Bathroom 1.

Page

26

WALL SCAN. BATHROOM 2



- NOTES:**
- 1. All sizes are final.
 - 2. Dimensions can be adjusted after walls alignment.
 - 3. Check all sizes and marks before the beginning of works (discrepancy of sizes and marks should be agreed with the project manager).
 - 4. The height defined from the clear floor level.
 - 5. For plumbing outlets use technical drawings of plumbing manufacturers
 - 6. Plumbing bindings are in the plans and scans of the project
 - 7. Order cabinet furniture after measurement and manufacturers project submission.

RC Rybalsky	Page
Wall scan. Bathroom 2.	27