



KSTAR



DC Product Line



- 48V Communication Power | High Pressure DC | Electric Operating Power Supply | Customized Power Supply

KSTAR Communication Power Supply System Product Line

Combined Type



Indoor solution for large capacity:
KSA481000N series
Indoor solution for medium capacity:
KSA48600N series

Embedded Type



Indoor solution for medium and small capacity:
KSA48300Q series
Indoor solution for medium and small capacity:
KSA48200Q series

Wall-mount Type



Indoor solution for medium and small capacity:
KSA48200B-1B
With space for battery/without space for battery
Indoor solution for small capacity:
KSA4890Q series
KSA4860Q series

Rectification Module



Horizontal rectification module/
longitudinal rectification module:
Model of module:
KSR3000-48M1 (high efficiency)
KSR3000-48N1 (normal efficiency)

KSTAR Communication Power Supply System

1. Appearance of Products



KSA481000N series

Product Configuration:

System capacity: 1000 A

System size: 600 mm (width) × 600 mm (depth) × 2000 mm (height)

System efficiency: ≥94% (load range of 30%~90%)

Rectification module: KSR3000-48M1 iron panel (the system is fully equipped with 20 modules)

Monitoring unit: KSM528P

AC configuration: 160A/3P input switch; configured with 20 channels module air switch.

DC configuration: Compatible with the requirements of sharing power supply system among single users and multiple users.

Maximum configuration: 46 channels fuse protector of 160 A and lower capacity (can be divided into 4 users);

Maximum configuration: 92 channels circuit breaker of 63A and lower capacity (can be divided into 4 users);

KSTAR Communication Power Supply System

1. Appearance of Products



KSA48600N series

Product Configuration:

System capacity: 600A

System size: 600 mm (width) × 600 mm (depth) × 2000 mm (height)

System efficiency: ≥94% (load range of 30%~90%)

Rectification module: KSR3000-48M1 (the system is fully equipped with 12 modules)

Monitoring unit: KSM528P

AC configuration: 100A/3P input switch; configured with 12 channels module air switch.

DC configuration: Compatible with the requirements of sharing power supply system among single users and multiple users.

Maximum configuration: 46 channels fuse protector of 160 A and lower capacity (can be divided into 4 users);

Maximum configuration: 92 channels circuit breaker of 63A and lower capacity (can be divided into 4 users);

KSTAR Communication Power Supply System

1. Appearance of Products



KSA48300N series

Product Configuration:

System capacity: 300A

System size: 600 mm (width) × 600 mm (depth) × 2000 mm (height)

Rectification module: KSR3000-48M1 (the system is fully equipped with 6 modules)

Monitoring unit: KSM528P

AC configuration: 63 A switch input; can be switched automatically or manually.

DC configuration: battery input: 250 A×2 channels (fuse protector)

First disconnection: 100 A×8 channels (fuse protector),
63 A×4 channels, 32 A×2 channels

Second disconnection: 63 A×4 channels, 32 A×2 channels

Space for battery: Reserved space for 2 sets of battery packs; batteries with different capacities can be chosen

KSTAR Communication Power Supply System

2. Product Features



Indoor solution for large capacity:
KSA481000N series

Indoor solution for medium capacity:
KSA48600N series

Flexible configuration

Sufficient space of server cabinet; multiple outputs; flexible configuration with options based on needs

Wide application range

Applied in two occasions: station shared by clients & station not shared by clients

High safety performance

All-around lightning protection design on AC side and DC side

High efficiency

Supporting mixed insertion of high efficiency & normal efficiency modules, realizing high comprehensive operating efficiency

MIIT TLC access certification and third party seismic inspection

KSTAR Communication Power Supply System

1. Appearance of Products



KSA48300Q series

Product Configuration:

System capacity: 300A

System size: 19 inches (width) × 400 mm (depth) × 10U (height)

System efficiency: ≥94% (load range of 30%~90%)

Rectification module: KSR3000-48M1 (the system is fully equipped with 6 modules)

Monitoring unit: KSM528P

AC configuration: 63A / 4P input switch; manually switching over the input of single channel and dual channels is provided as an option.

DC configuration: Compatible with the requirements of sharing power supply system among single users and multiple users.

Maximum configuration: 18 channels circuit breaker of 125A or 63A and lower capacity (can be divided into 4 users);

KSTAR Communication Power Supply System

1. Appearance of Products



KSA483200Q series

Product Configuration:

System capacity: 200A

System size: 19 inches (width) × 400 mm (depth) × 8U (height)

System efficiency: ≥94% (load range of 30%~90%)

Rectification module: KSR3000-48M1 (the system is fully equipped with 4 modules)

Monitoring unit: KSM528P

AC configuration: 63A / 2P input switch; manually switching over the input of single channel and dual channels is provided as an option.

DC configuration: Compatible with the requirements of sharing power supply system among single users and multiple users.

Maximum configuration: 18 channels circuit breaker of 125A or 63A and lower capacity (can be divided into 4 users);

KSTAR Communication Power Supply System

2. Product Features



Indoor solution for medium and small capacity: KSA48300Q series
Indoor solution for medium and small capacity: KSA48200Q series

Simple structure & easy expansion

Overall drop down door design; operated completely on the front side; easy maintenance.

Rectification plug-in shelf modular design, enabling easier expansion.

Excellent compatibility of the system

Power distribution area both supports the need of single user and the need of sharing station by multiple users, realizing flexible configuration.

Outgoing line supports outlet from the top and from both sides, which brings more convenience.

Multiple communication interfaces enables wide application range

Equipped with Ethernet port and multiple RS485 serial ports and USB ports; on-line design of software; applicable for various application occasions.

MIIT TLC access certification and third party seismic inspection

KSTAR Communication Power Supply System

1. Appearance of Products



KSA48200B-1A series
(including space for battery)

Product Configuration:

System capacity: 200A

System size: 550 (width) × 370 (depth) × 750 (height) mm

Rectification Module: KSR3000-48M1 iron panel (the system is fully equipped with 4 modules)

Monitoring unit: KSM528P

AC configuration: 63A/2P input switch

DC configuration: battery input: 125A×2 channels

First disconnection: 63A×4 channels, 32A×2 channels,
20A×2 channels

Second disconnection: 20A×1 channel, 10A×2 channels

Space for battery: Reserved installation space for 2 sets of battery packs; batteries with different capacities can be chosen

KSTAR Communication Power Supply System

1. Appearance of Products



KSA48200B-1B series
(without space for battery)

Product Configuration:

System capacity: 200A

System size: 450 (width) × 230 (depth) × 600 (height) mm

Rectification Module: KSR3000-48M1 iron panel (the system is fully equipped with 4 modules)

Monitoring unit: KSM528P

AC configuration: 63A/2P input switch

DC configuration: *battery input: 125A×2 channels*

First disconnection: 63A×4 channels, 32A×2 channels, 20A×2 channels

Second disconnection: 20A×1 channel, 10A×2 channels

KSTAR Communication Power Supply System

1. Appearance of Products



KSA4890Q series

Product Configuration:

System capacity: 90A

System size: 19 inches (width) × 350 (depth) × 3U (height)

Rectification module: KSA4830D2 (the system is fully equipped with 3 modules)

Monitoring unit: KSM48B

AC configuration: air switch or terminal input (optional)

DC configuration:

Air switch is optional; flexible configuration

KSTAR Communication Power Supply System

1. Appearance of Products



KSA4860Q series

Product Configuration:

System capacity: 60A

System size: 19 inches (width) × 233 (depth) × 1U (height)

Rectification module: KSA4830D2 (the system is fully equipped with 2 modules)

Monitoring unit: KSM48B

AC configuration: air switch or terminal input

DC configuration: 1 channel 40A battery input & 1 channel load output

KSTAR Communication Power Supply System

2. Product Features



Indoor solution for medium and small capacity (with space for battery/without space for battery)

KSA48200B-1A / KSA48200B-1B

Indoor solution for small capacity:

KSA4890Q series/KSA4860Q series

Simple structure and convenient outgoing line

Wall-mount; small volume; applicable for installation in narrow spaces

Outgoing line from top surface, bottom surface and sides of the system, which is convenient and flexible

Multiple choices of configuration; high utilization rate of space

Different configurations can be chosen according to selections of batteries; easy to understand

Clear division of spaces for module & monitoring access control, power distribution and battery; high utilization rate of space

MIIT TLC access certification

KSTAR Communication Power Supply System

1. Appearance of Products



KSR3000-48M1



KSR3000-48N1

KSTAR Communication Power Supply System

2. Product Features



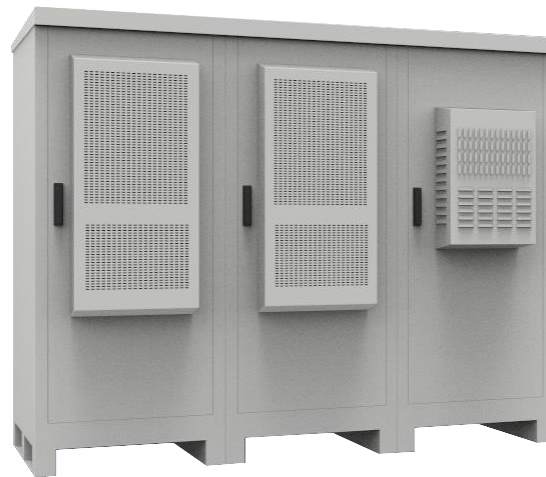
**Horizontal rectification module/
longitudinal rectification module:**
KSR3000-48M1 (high efficiency)
KSR3000-48N1 (normal efficiency)

1. Module output voltage: 53.5 Vdc
2. Module output power: 3000 W
3. Power density of module: 1.4 W/cm³
4. High-efficiency module: $\geq 95.0\%$ (load range of 30%~90%)
5. Normal-efficiency module: $\geq 93.0\%$ (load range of 30%~90%)
6. Power factor: 0.998
7. Input power grid efficiency: 45~65Hz
8. Operating temperature: -40°C~65°C
9. Safety requirement: EN60950
10. Reliability MTBF: 850 thousand hours

1. Appearance of Products

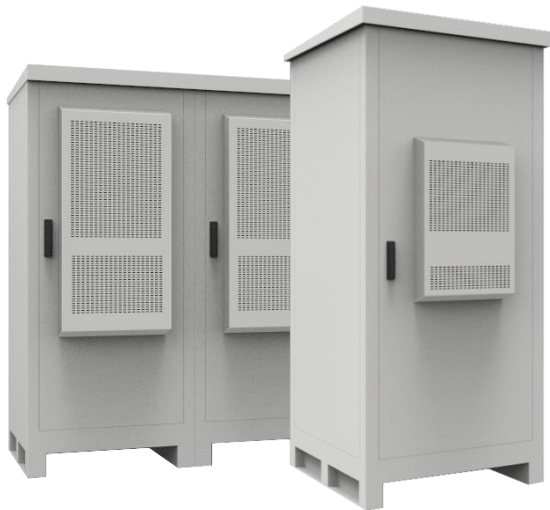


KEC-1.8 type



KEC-1.4 type

2. Product Features



**Outdoor Integrated Server
Cabinet System -- KEC Series**
KEC-1.8 type/KEC-1.4 type

1. Various ways of temperature control: air conditioner, heat exchange, TEC
2. Intelligent FSU unit of environmental variables monitoring
3. Intelligent electronic access control and captured videos to guard against theft
4. Measurement and management of electric quantity
5. Intelligent health management of battery
6. Mixed insertion of modules; module sleeping; battery sleeping
7. Intelligent configuration of electrical port; intelligent and flexible power distribution
8. Supporting single cabinet and parallel installation of multiple cabinets