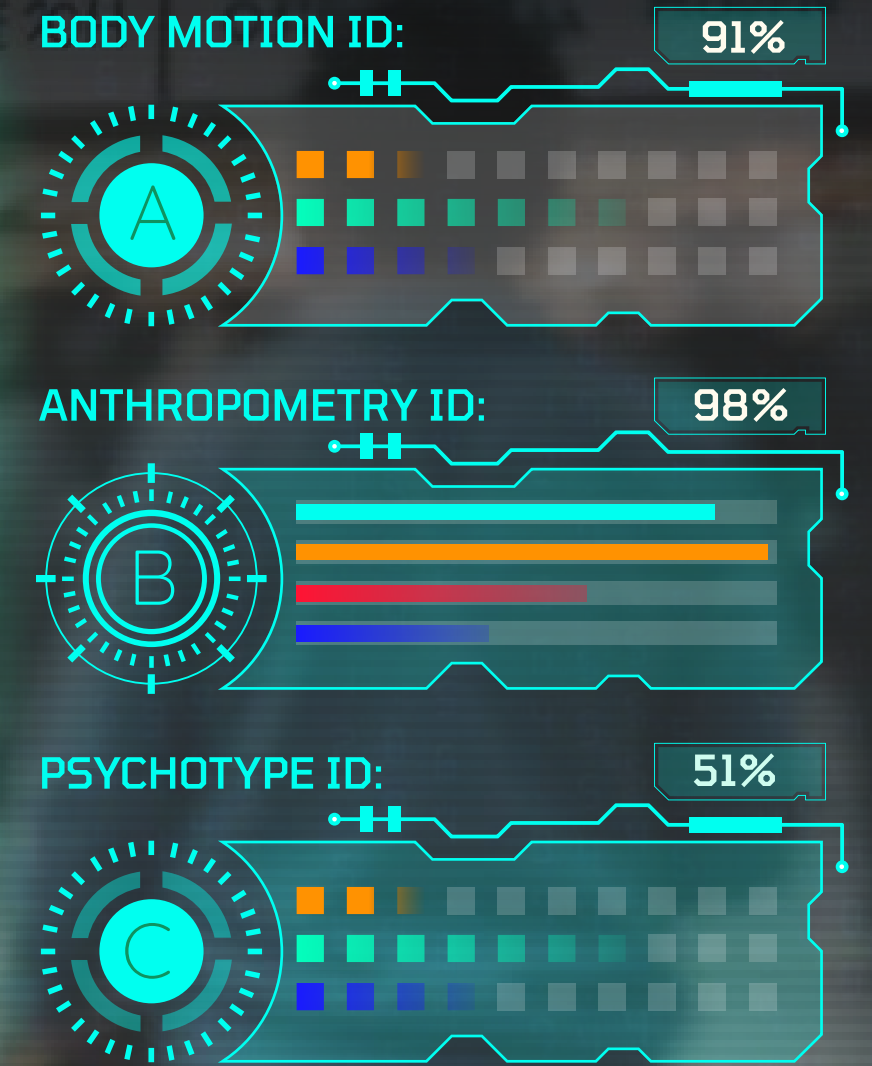
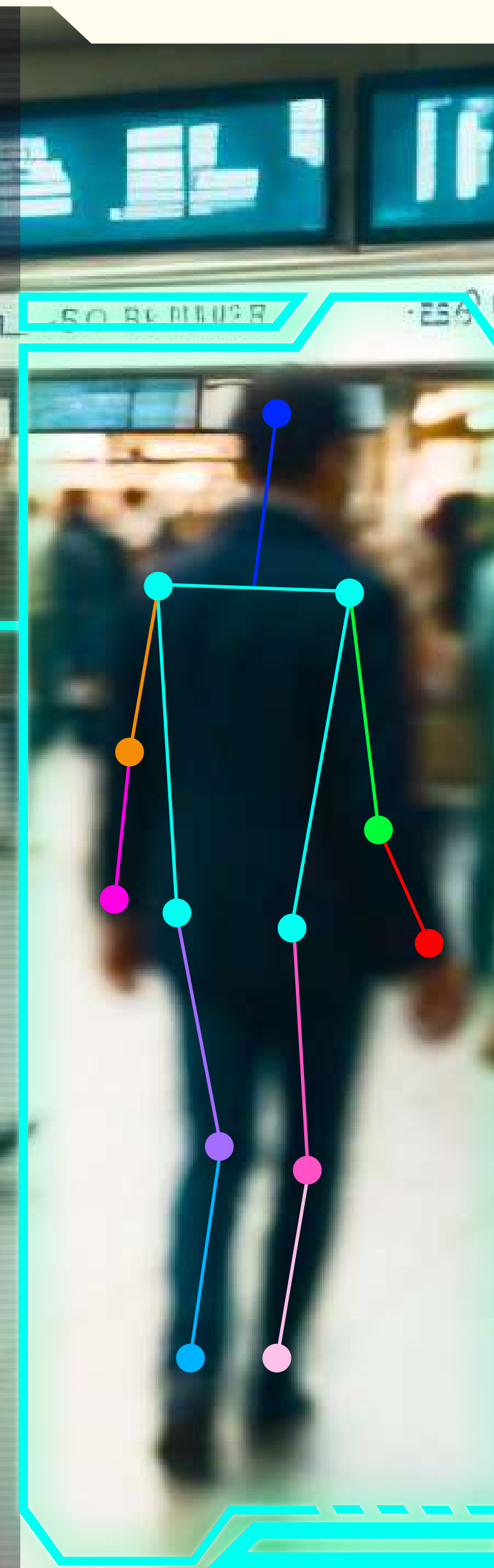




# ethogram.io

is pioneering a revolutionary **"AI Biometric ID"** system designed to remotely identify individuals and predict their personality psychoprofiles using body motion data from CCTV footage and other sensors.



**VIEW  
MORE:**

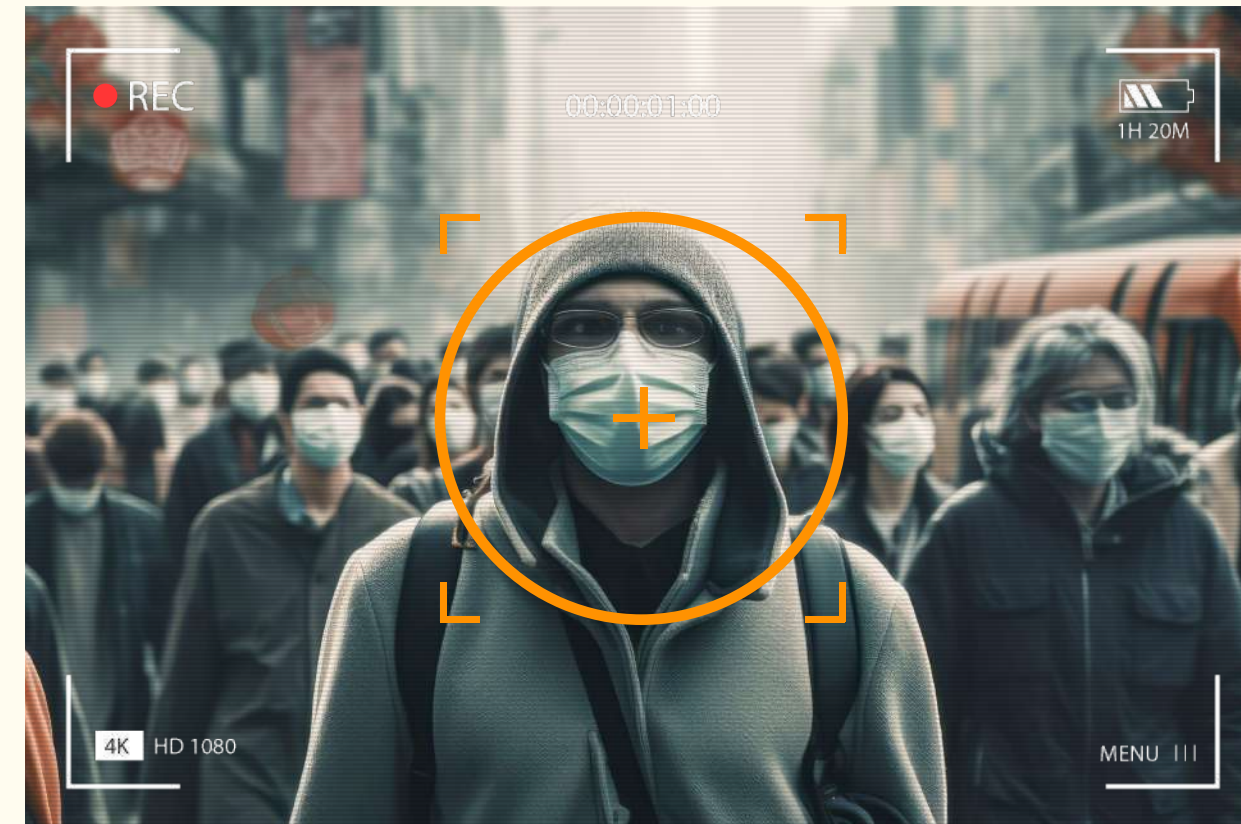


# PROBLEM

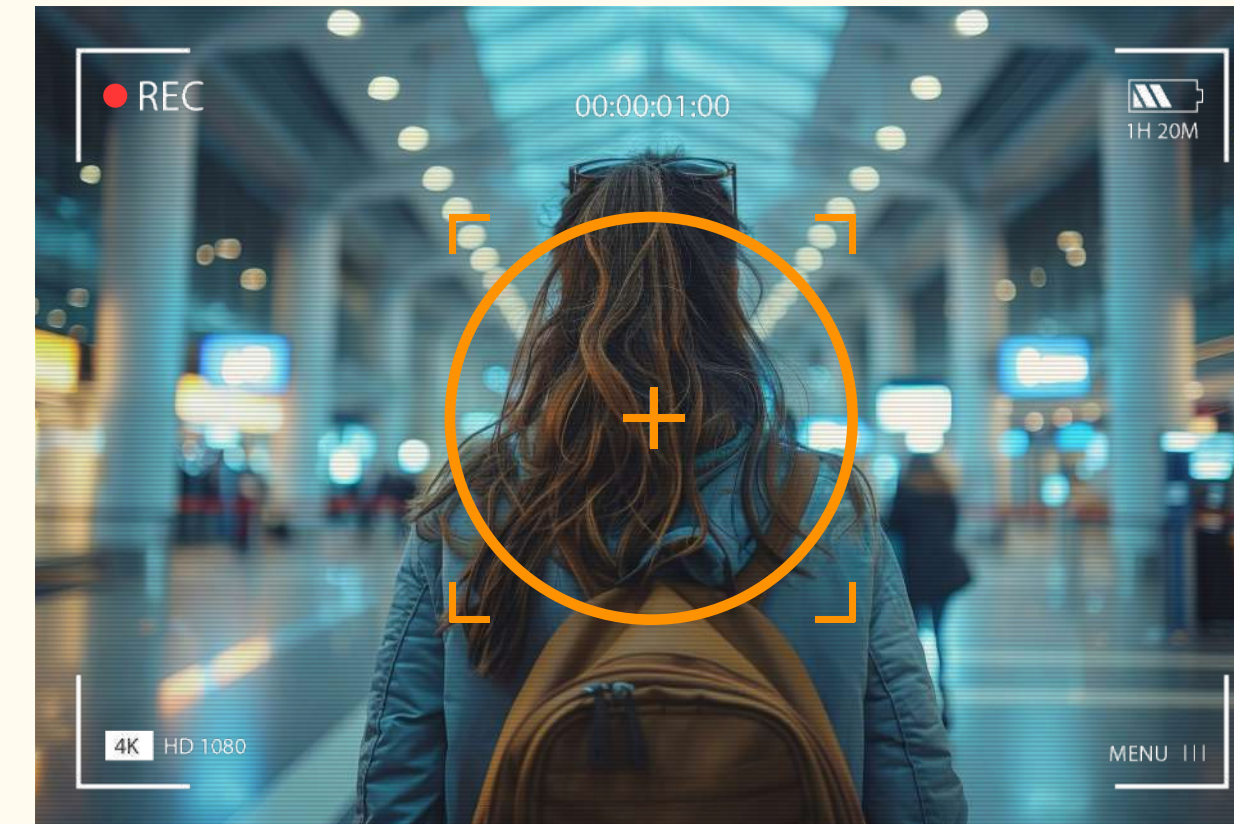
What current CCTV-based identification issues we face:



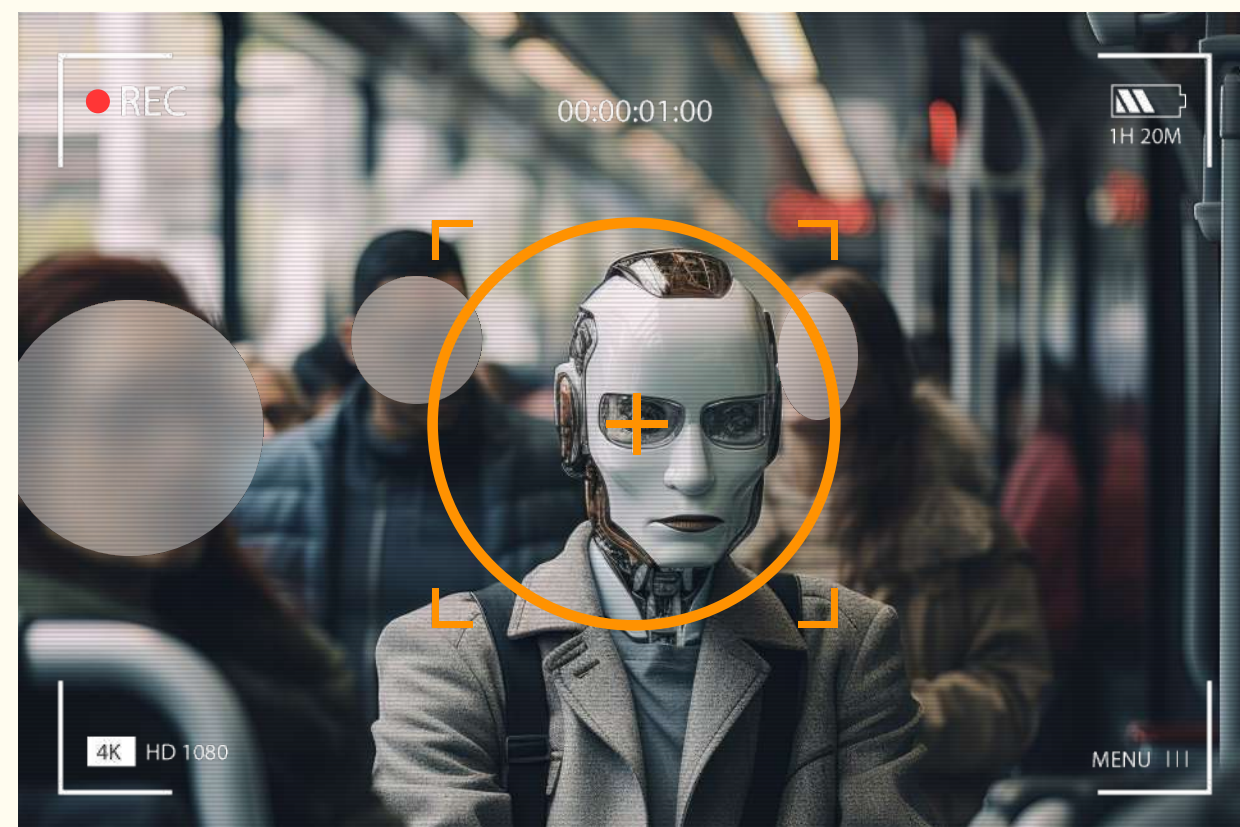
**Race and ethnicity bias-free identification**



**"No visible face" identification**



**"From the back" identification**



**Disguise resistant identification**



**Inability to predict a psycho profile**



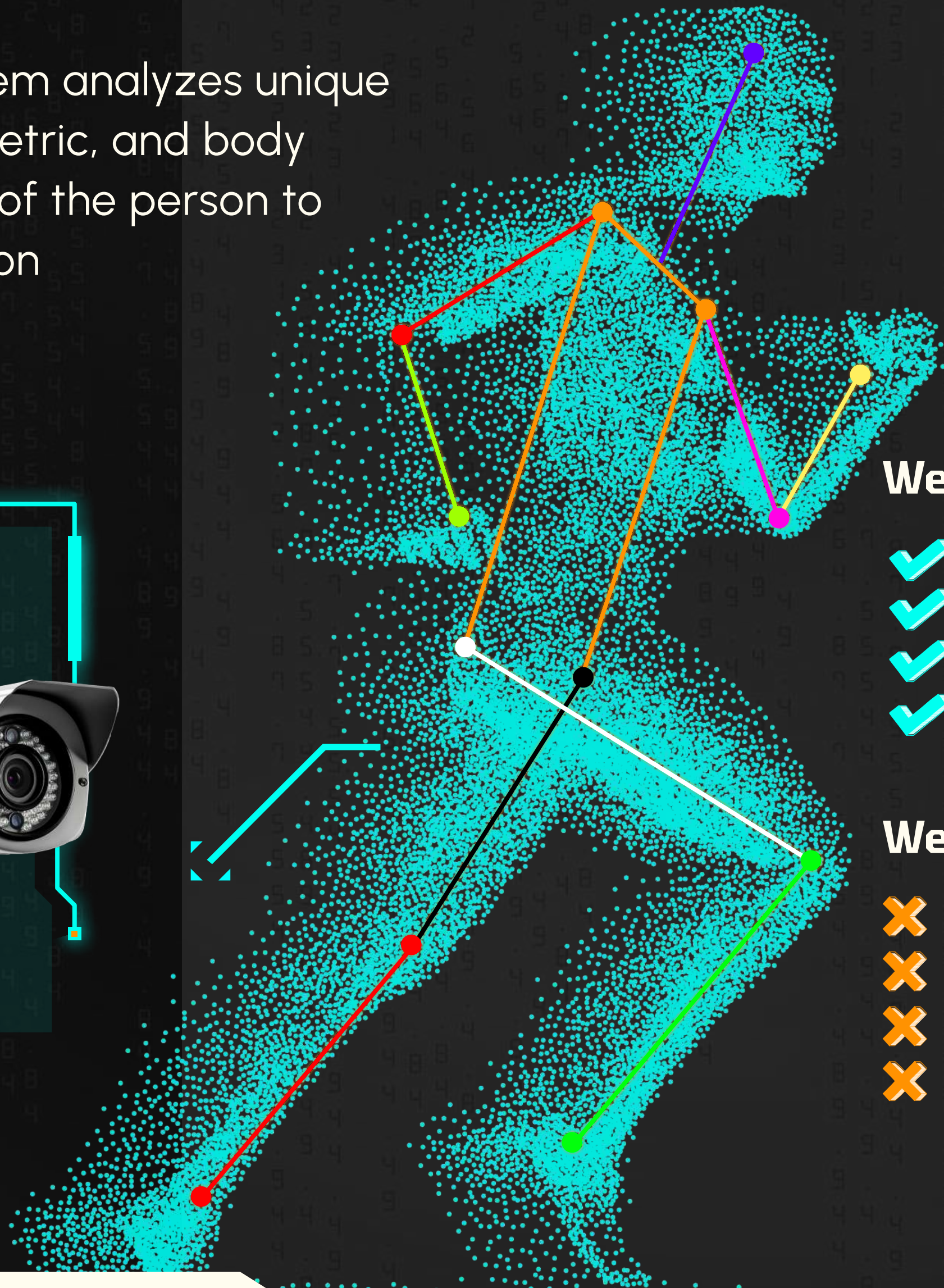
**Forbidden zones (e.g. healthcare, changing rooms, etc)**

# SOLUTION

"AI Biometric ID" system analyzes unique behavioral, anthropometric, and body motion characteristics of the person to create a next generation biometric profile.



CCTV + LIDAR Setup

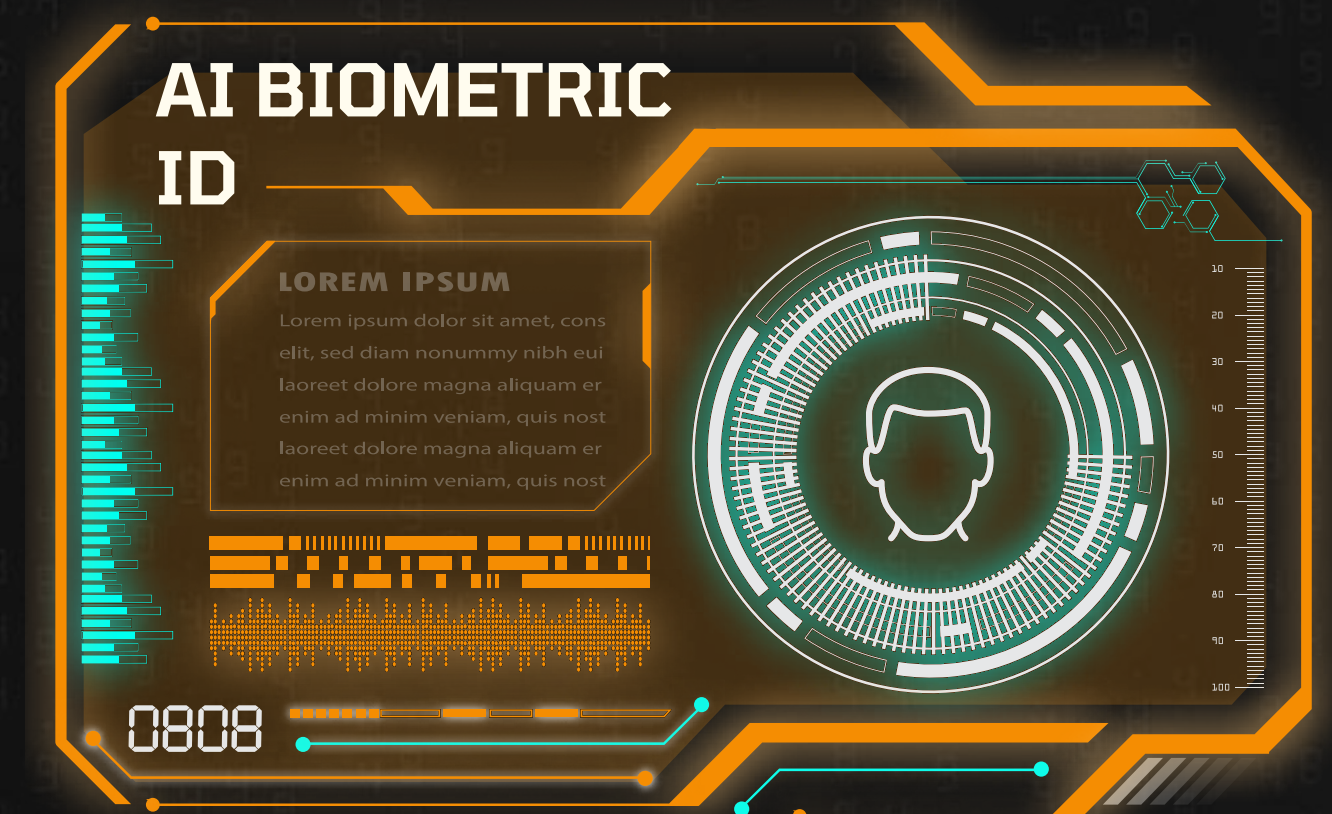
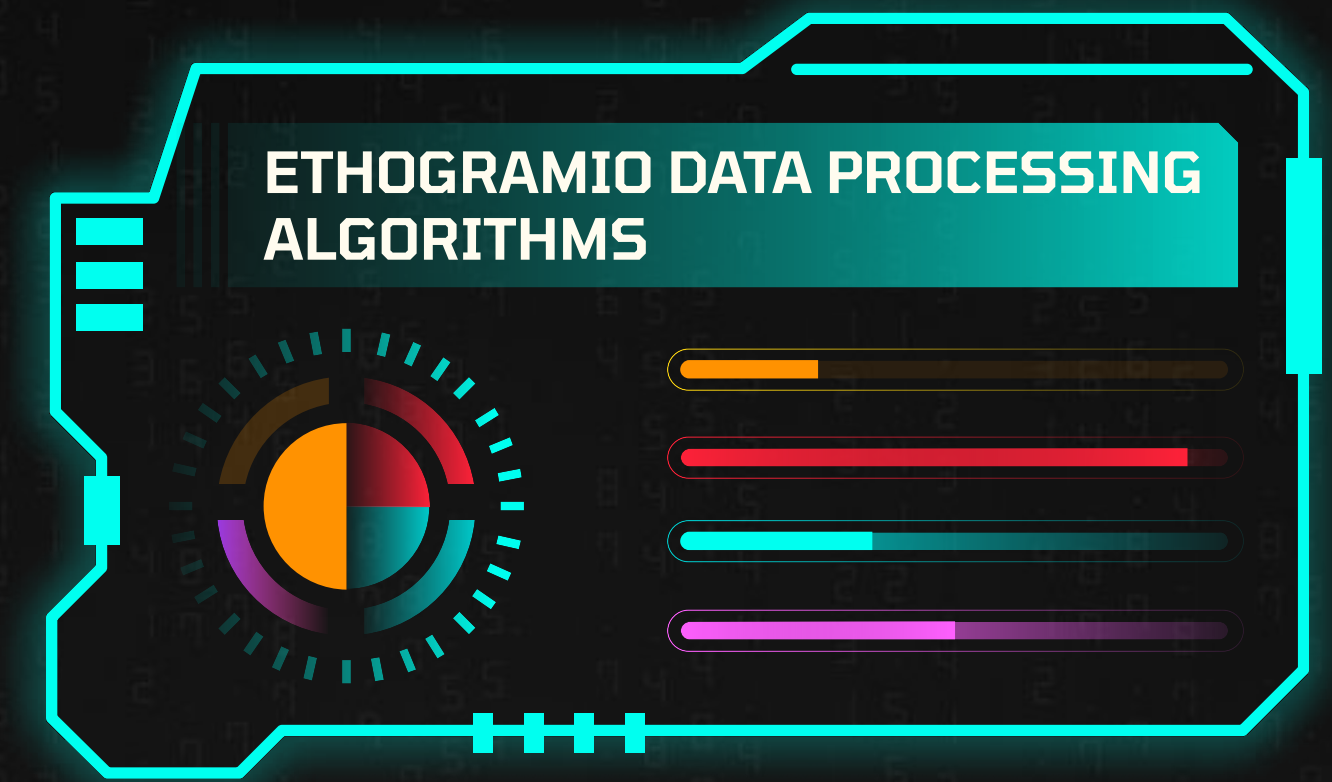


## We use:

- ✓ Body motion,
- ✓ Gestures,
- ✓ Behavioral patterns,
- ✓ Anthropometry,

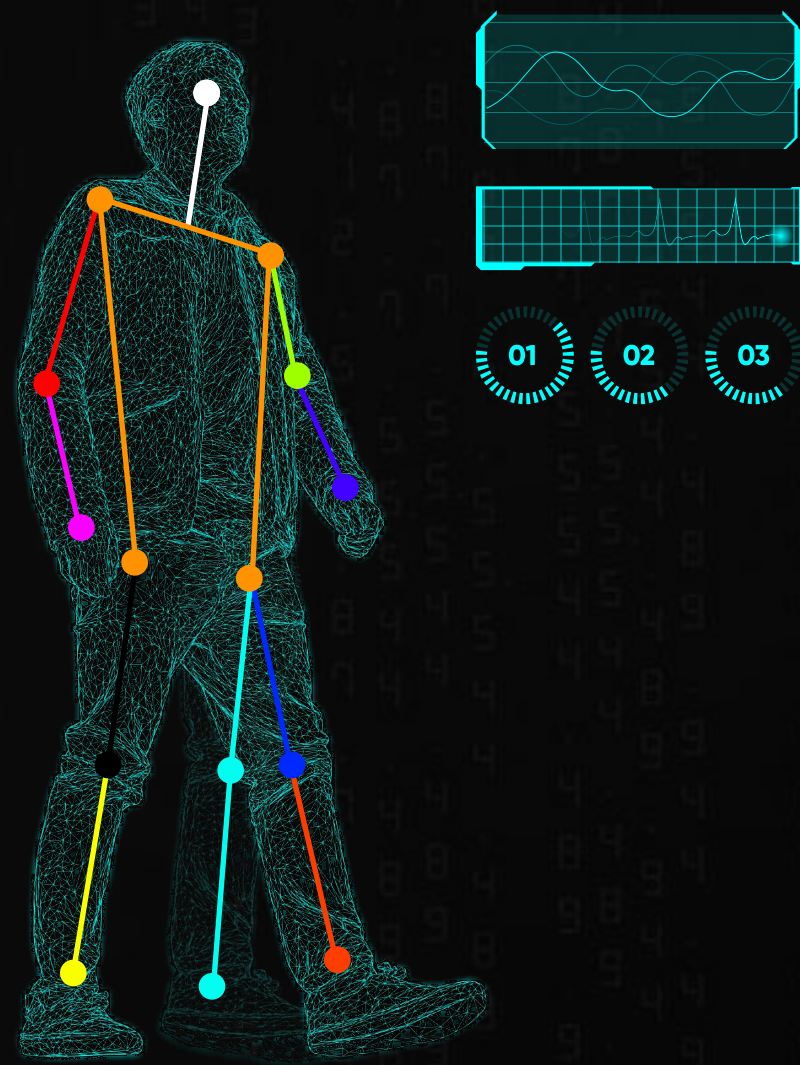
## We do not use:

- ✗ Facial recognition
- ✗ Finger print
- ✗ Iris scan
- ✗ RFID



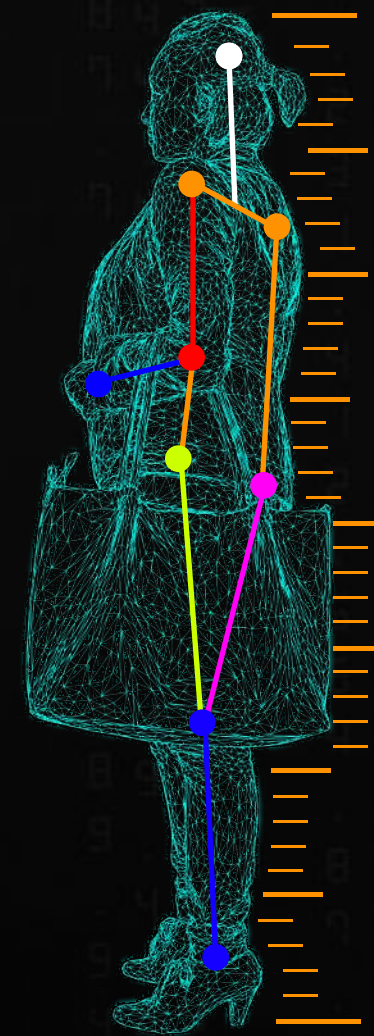
# HOW IT WORKS:

**"AI Biometric ID"** is a composite profile that is composed of three unique sets of parameters every human being possesses, which are calculated with our modules:



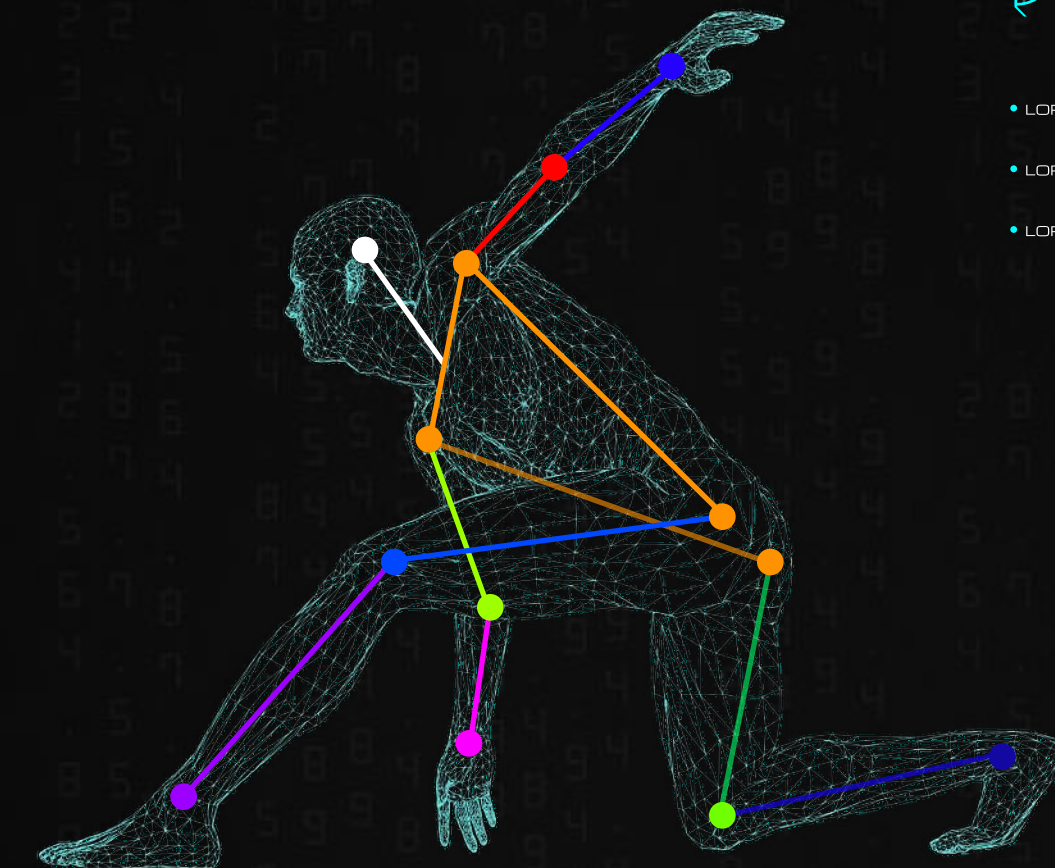
## BODY MOTION ID MODULE

a set of unique characteristics of person's gait and gestures.



## ANTHROPOMETRY ID MODULE

a set of unique characteristics of person's height, limbs' size, axis and proportions.



## PSYCHOTYPE ID MODULE

a personality traits profile based on HEXACO system generated by the machine learning algorithms plus posture, gestures and unique motion patterns.




\*We utilize three independent IDs which are based on different characteristics. When combined they form a unique holistic AI Biometric ID.

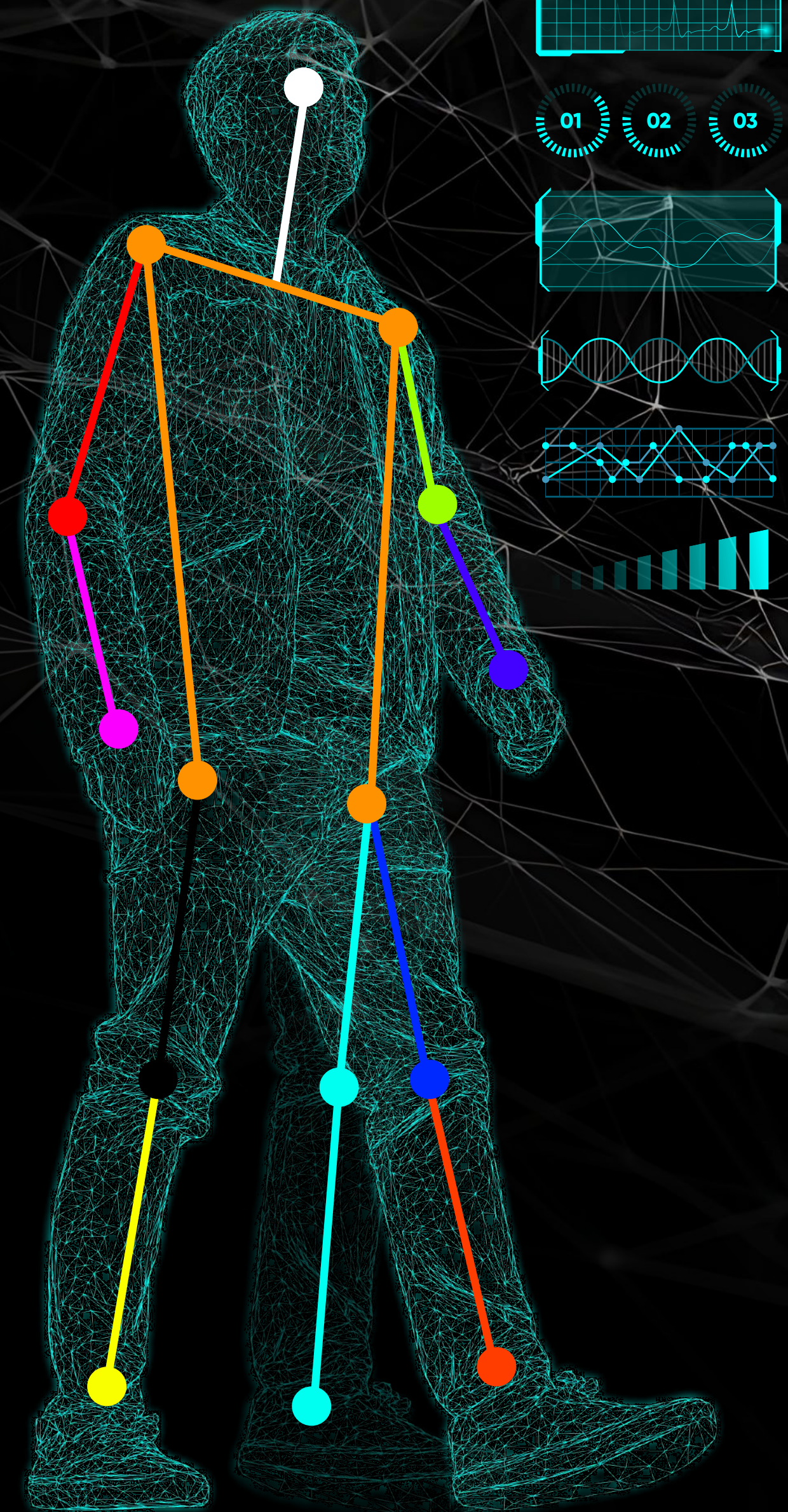
# DEGREE OF INNOVATION

AI Biometric ID is a radical innovation rather than incremental. Due to IoT computation power and sufficient level of data processing we can finally open a new chapter in human behavior studies. Our machine learning algorithms went further than present facial recognition technologies. **We now analyze the whole human body, its motion, gestures and gait patterns, and even psycho profiles.**

Our product is not only aimed to put human identification and profiling to the next step in the development, but to produce a lot of valuable data for upcoming public security, military, and retail R&D projects and collaborations with academia.

## FUTURE PRODUCTS AND DEVELOPMENTS BASED ON THE AI BIOMETRIC ID:

-  DNA matching collaboration
-  Body motion for film CGI based on personality profiles
-  Drones and automated turrets smart aiming



# COMPETITION

## FACIAL RECOGNITION

There are multiple companies providing Facial Recognition for surveillance, identification and tracking. However, all these products use face and fail when the face can't be scanned.

## RECOGNITION AND TRACKING

Several companies provide recognition and tracking using only physical attributes, such as type and color of the outfit or body shape. As an example – [People Tracker](#) by CyberLink. But all these platforms don't actually identify a person, they track attributes of the person of interest. So, it's not disguise resistant and gives not much additional information.

## PEOPLE COUNTING TECHNOLOGIES

They are using models that can predict age, gender, some anthropometric information, but they're unable to identify people without facial recognition.

## GAIT PROFILING

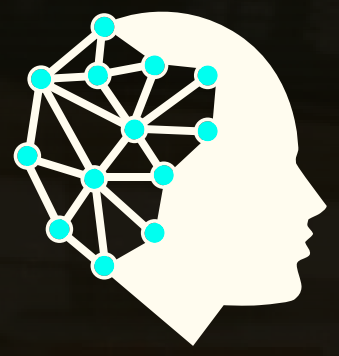
One of the closest products available on the market we consider [Watrix](#), a Chinese company that provides gait profiling and people identification. In 2021 they've got \$42 million funding and now provide their services to Beijing Police. While they're using gait profiling, we're going even further – our AI Biometric ID has several levels of motion and behavioral data.

## PREVIOUS GENERATION

Apart of automations and computer vision models, there are "old school" technologies on how to identify certain parameters of gait and gestures. Companies like [NASS](#), still helping to train Aviation and Transportation Security staff. They are using a world-renowned Behavior Pattern Recognition program. Something very close to what ethogramio will do but using AI.

## UPCOMING TECHNOLOGIES

[The science](#) has started to look deeper into the problems of criminal behavior and personality traits. That makes ethogramio in line with new developments in sociology and criminology.



**ethogram.io**

# CONTACT US:

**+43 1 4120066**

[product@ethogram.io](mailto:product@ethogram.io)

Ethogramio FlexCo  
Stephansplatz 8/20  
1010 Wien  
Austria

