



PROJECT RECONSTRUCTION

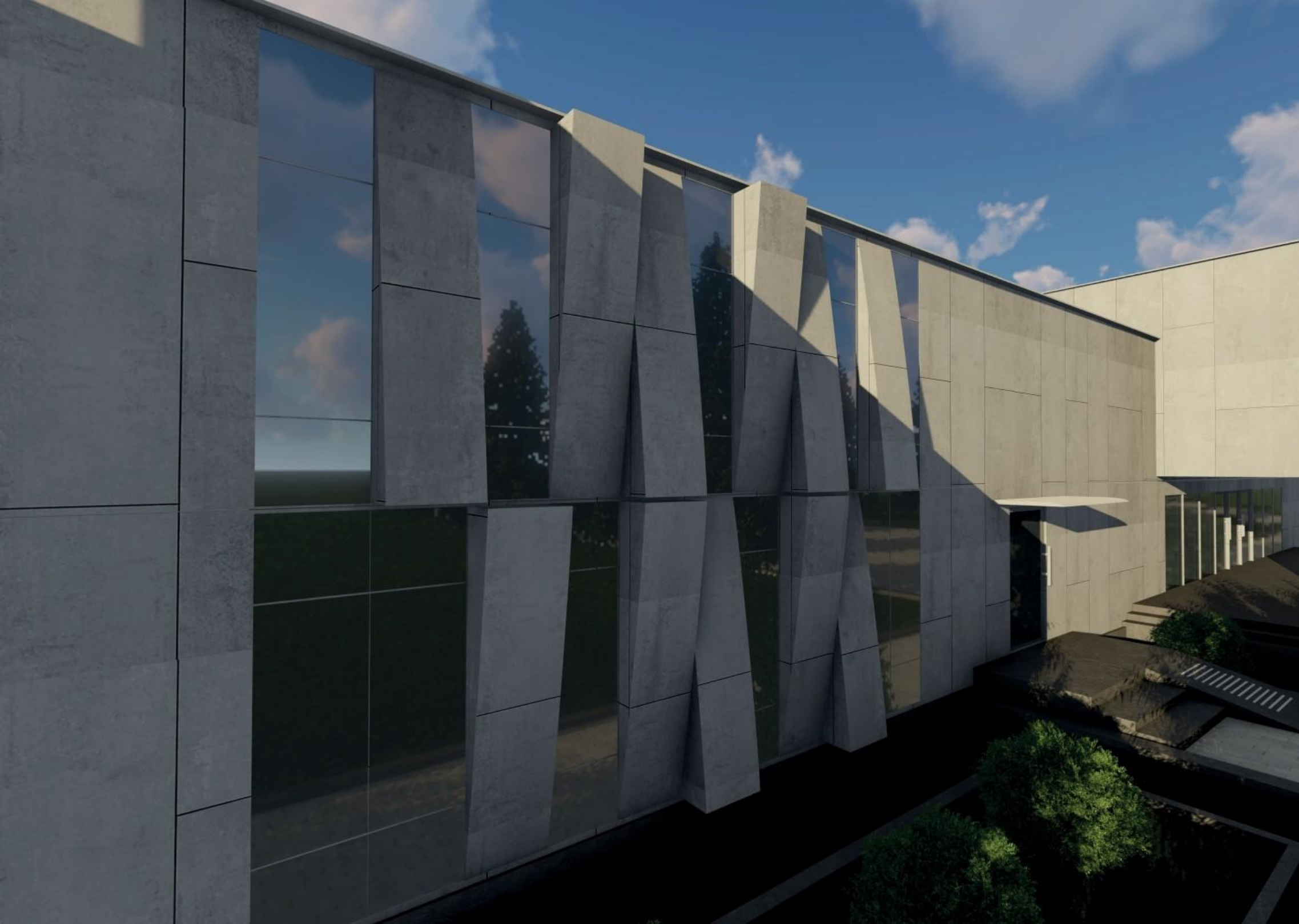
Cultural and sports complex
Palace of Culture and Arts

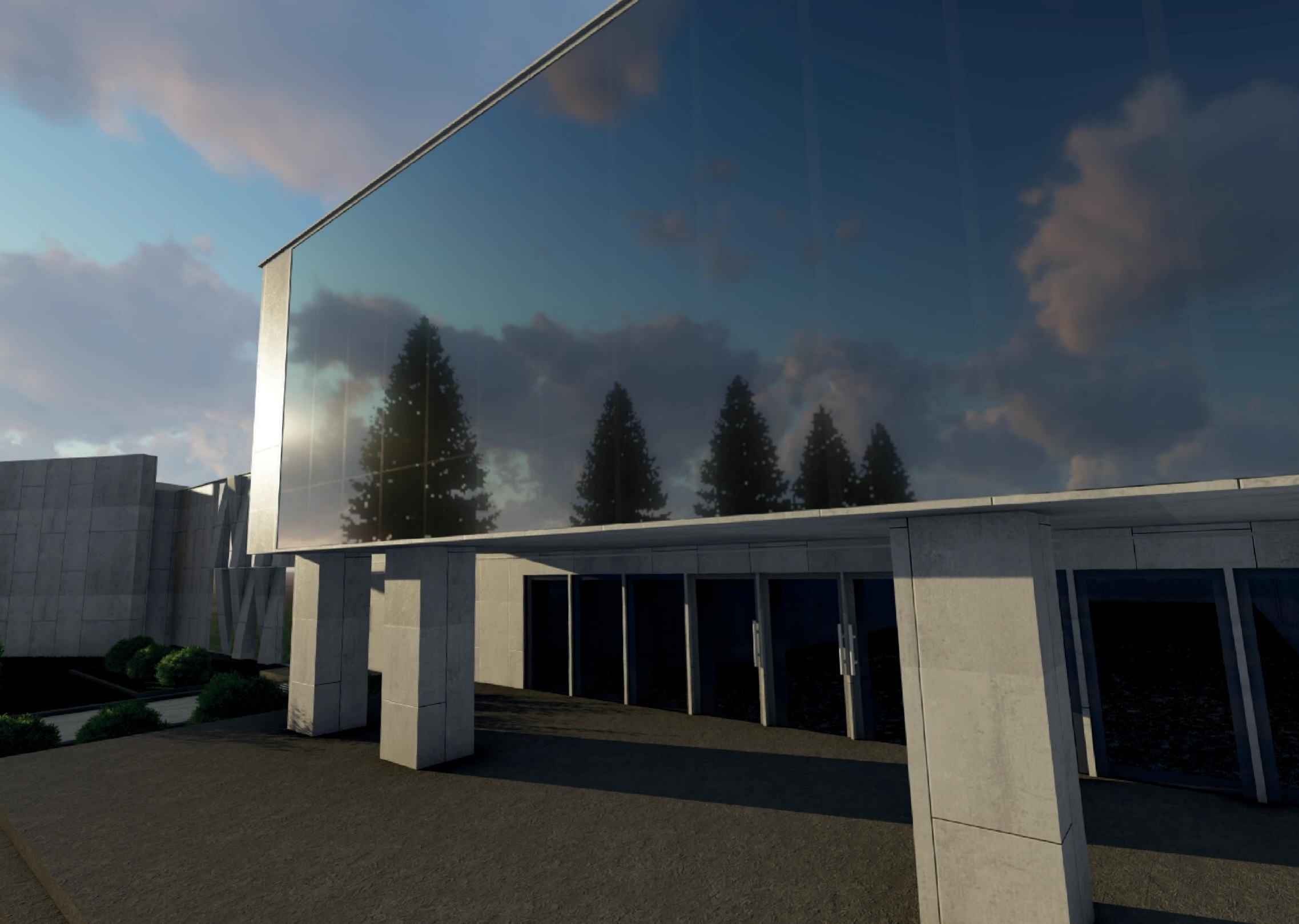
 Makariv

2022





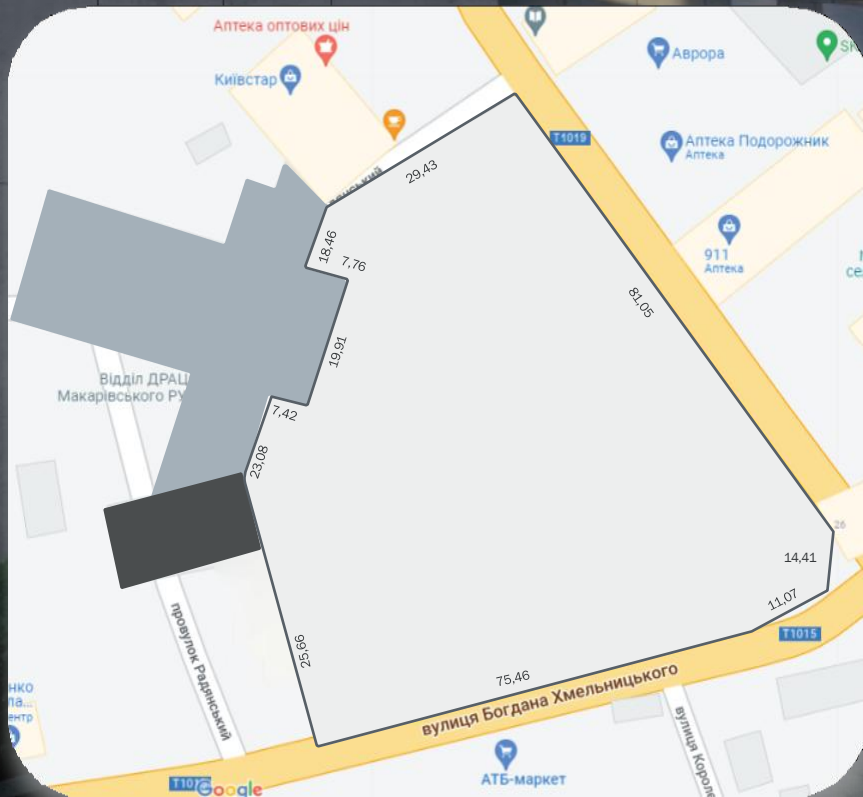








Territory



Palace of Culture and Arts

■ 3 331,9 m²

Children's sports and youth school

■ 477,4 m²

Area

□ 0,56 ha

Address:

St. Dimitriy Rostovskyi, 27, Makariv village,
Buchansky district, Kyiv region



Current status


The building of the cultural complex suffered **significant damage** due to rocket attacks by the Russian troops. The collapse of the roof of the building led to further damage to the premises: **cracks appeared near the walls**, on the ceiling and on the floor, **which led to flooding** and the formation of mold. Accordingly, furniture, equipment, inventory and elements of interior decoration became unusable.

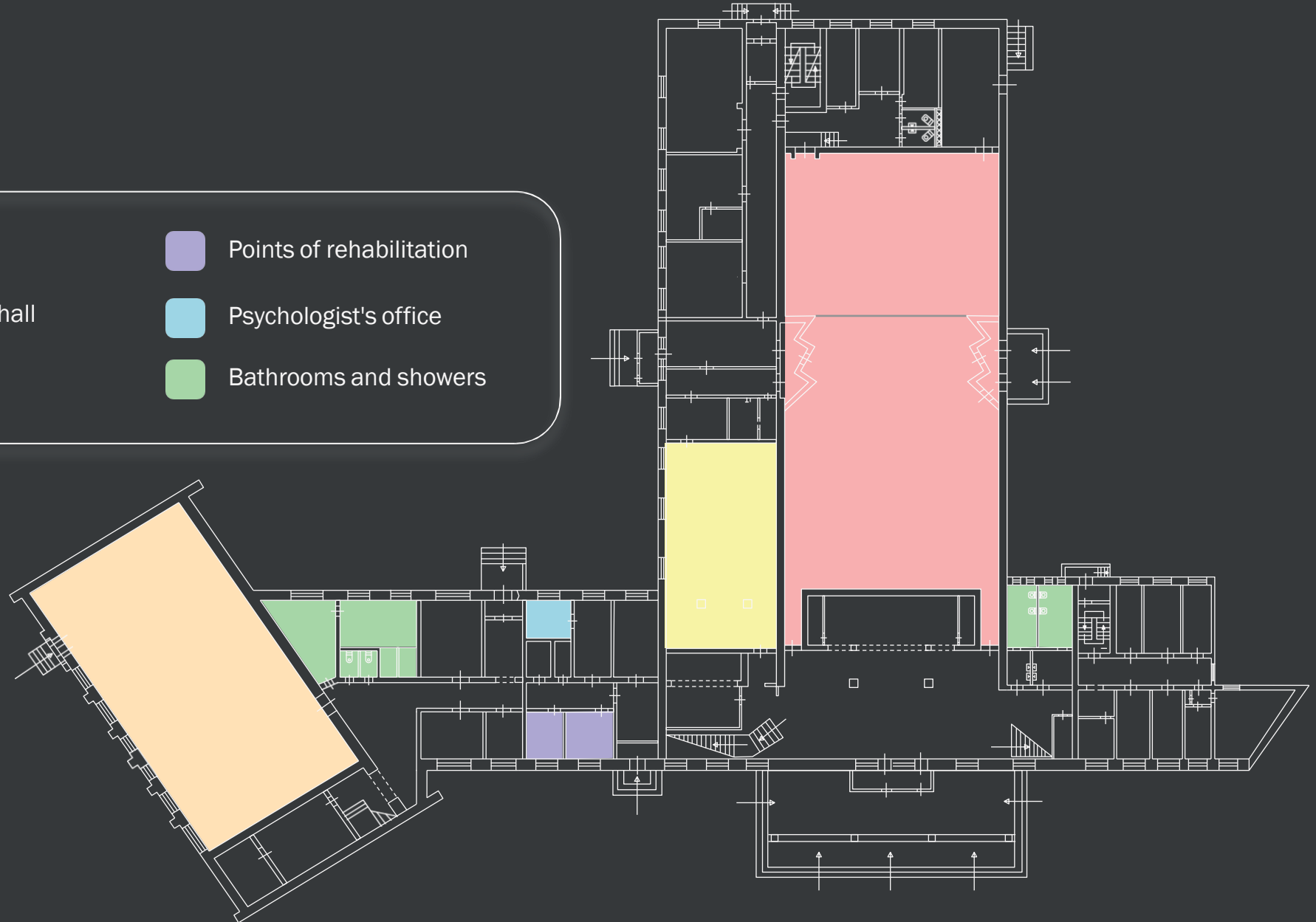




Functional: First floor

1663,4 m²

- | | | | |
|---|-----------------|---|--------------------------|
|  | Concert hall |  | Points of rehabilitation |
|  | Ceremonial hall |  | Psychologist's office |
|  | Gym |  | Bathrooms and showers |






Functional: Second floor

1258,7 m²

Before the war, circles and associations for children and adults worked in the center. We held sports initiatives, concerts, theatrical performances, circus performances, tournaments, festivals, holidays, contests, reviews of amateur artistic creativity. The newlyweds were married in the ceremonial hall. An art gallery worked on a permanent basis. In the future, there is an arrangement on the territory of points for the provision of psychological assistance and offices with a psychologist for children who suffered during hostilities as a result of the full-scale invasion of the Russian Federation into the territory of Ukraine

 Dance hall

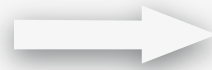
 Art Gallery

 Music hall





Concert hall

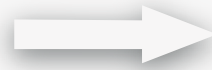


Bathroom

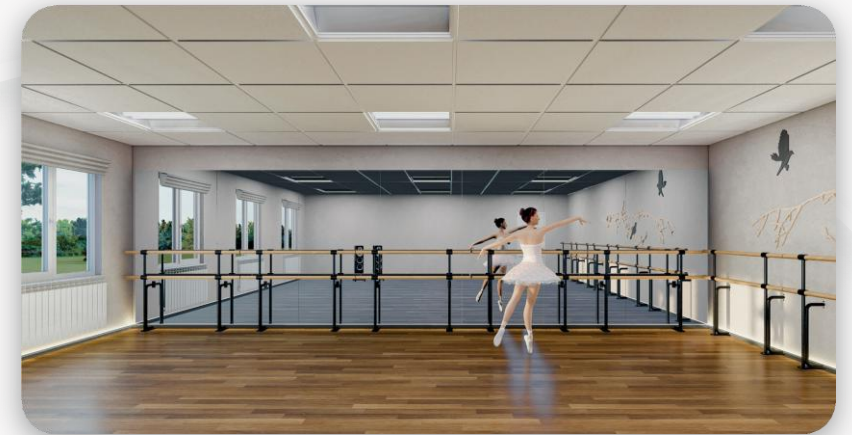
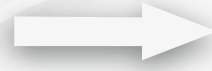




Art Gallery



Dance hall





! Priorities

1 Security

The use of environmentally friendly, **non-toxic materials**, the selection of materials and structures with an increased margin of safety, the increased rigidity of frame structures and body solutions in case of damage or deformation of the building, the selection of materials to reduce the accompanying damage in the event of damage to the building, a well-thought-out system of visual signs to facilitate **evacuation to a bomb shelter** or outside the building.

2 Energy efficiency

Structural elements of the building are built with the goal of minimal resource consumption: **insulated building** with appropriate selection of glasses and **heating systems** to minimize heating costs, selection of **"smart" plumbing** for optimal water consumption, etc.

3 Economy

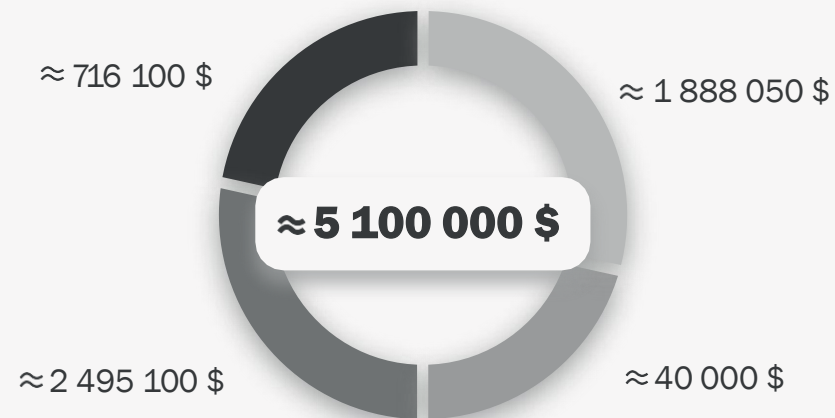
Rejection of expensive materials and components, use of products of local manufacturers, **minimization of costs** for assembly and production processes, advance planning of all processes to optimize costs



Budget

According to preliminary calculations, the total the area of damage is more than **3802 m.²**,

The estimate is **1500 USD for 1 m.²**

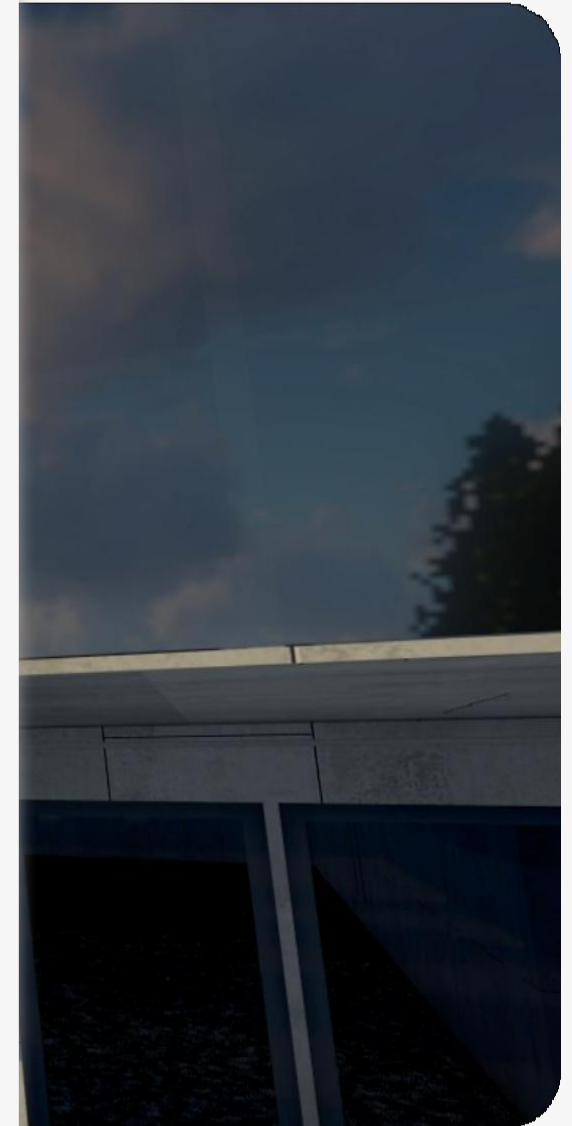


■ Sport school

■ Shelter

■ 1 floor


■ 2 floor





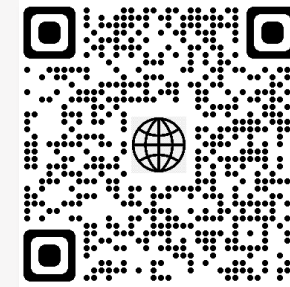
Contact Information

 +38 097 881-74-02

 info@makariv-rada.gov.ua



FACEBOOK



WEBSITE

