

BABYNTSI  
BABYNTSI  
**BABYNTSI**

BABYNTSI  
BABYNTSI  
BABYNTSI  
BABYNTSI  
BABYNTSI  
BABYNTSI

**DIGITIZATION  
OF DESTROYED  
INFRASTRUCTURE**

**Kyiv**  
region



**REBUILD**



# ABOUT THE PROJECT

## Background

The Russian aggression has caused a large amount of damage and destruction in almost all regions of Ukraine — housing and infrastructure have been destroyed, and industrial facilities and local businesses shut down.

The speed and efficiency of the country's recovery processes directly depend on a competent assessment of the damage, correct budgeting and a step-by-step plan for reconstruction. A transparent assessment of damages will justify the need for funding as well as simplify the process of raising funds for recovery.

## About the project

The RebuildUA project aims to digitize, analyze and demonstrate to the world the destruction of Ukraine's infrastructure. The geography of the project covers all regions of the country affected by military aggression.

The results will be made public, communicated to communities, public authorities and specialized recovery funds.

## Project founders:

Drone survey and digitization of geospatial information:



Land analysis and interaction with communities:



The initiative is being financially and technically supported by the United Nations Development Programme in Ukraine.

## Methodology

### 1. Drone photography and orthophoto creation

The use of drones allows the project team to collect detailed data on the destruction: to fly at low altitudes, and shoot buildings at different angles and from all sides. For localities where drone shooting is not possible, we use high-resolution satellite images.

### 2. Collection of photos and videos

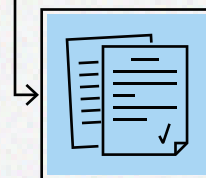
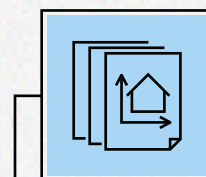
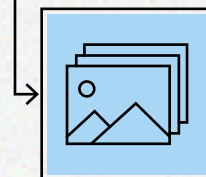
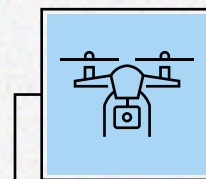
To ensure completeness of the input data, the project team captures photos and videos, as well as collects additional information from verified sources.

### 3. Destruction detection and data processing

Based on orthophotos, GIS specialists digitize all buildings, identify destroyed objects, classify building types, and determine levels of destruction.

### 4. Publication of analytical reports

Designers and content managers present the complete information in public infographic reports.



Find out more at the project website:



[rebuildua.net](https://rebuildua.net)

# ABOUT THE LOCALITY

The village of Babyntsi in Buchanskyi district, along with neighboring settlements, suffered from russian shelling in mid-March. Near the village, the russian military opened fire on cars with civilians, as a result human lives were lost.


Together with other towns and villages of the Kyiv agglomeration, the village blocked access to the capital, and therefore did not avoid serious damages and destruction of the local infrastructure.

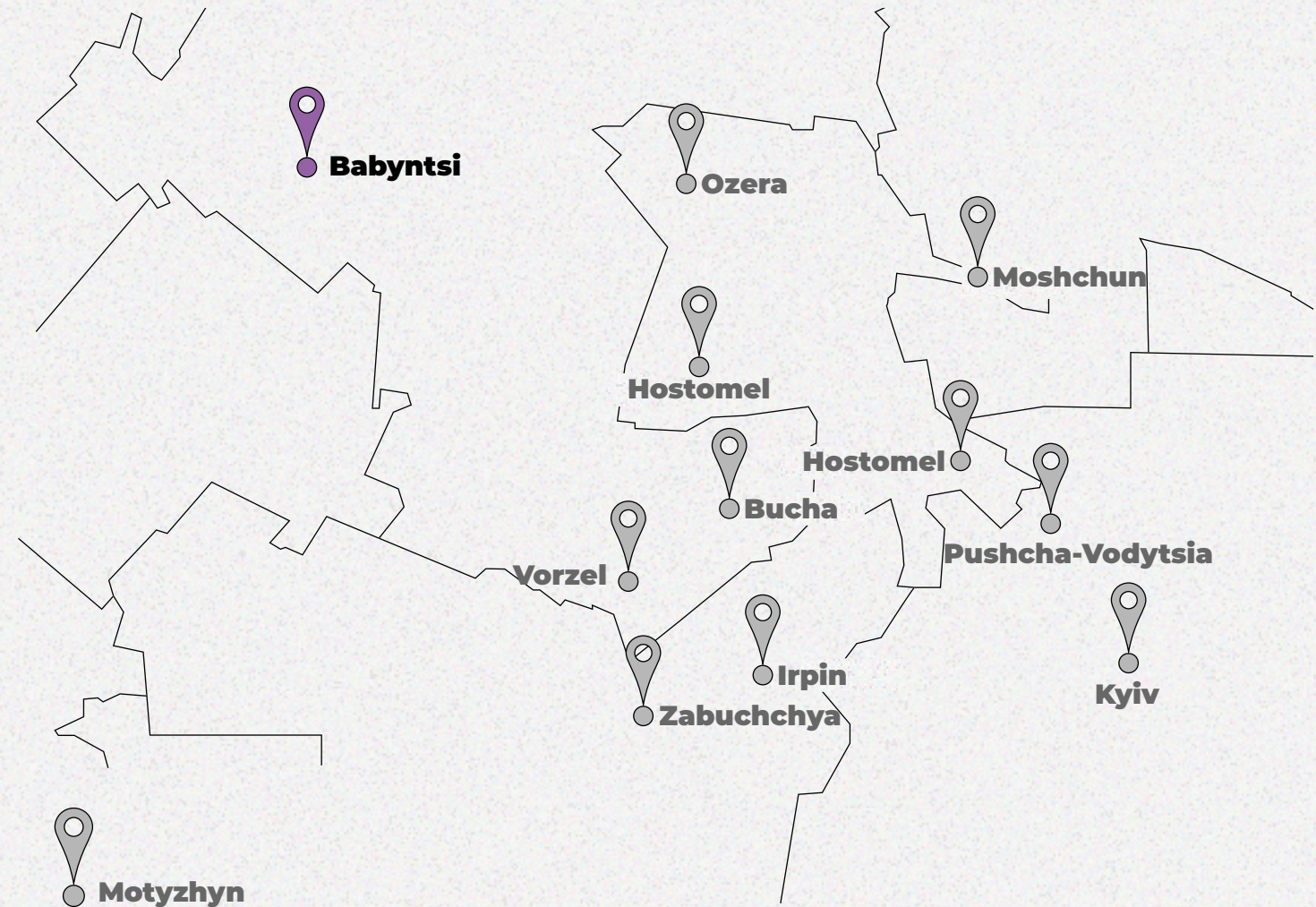
The RebuildUA team visited the locality and analyzed the damage caused by the occupiers.

Keep track of our route on the map and in project news.




 [rebuildua.net](https://rebuildua.net)

 [/rebuildua.net](https://www.facebook.com/rebuildua.net)



Region **Kyiv**  
 District **Buchanskyi**  
 Community **Buchanska**

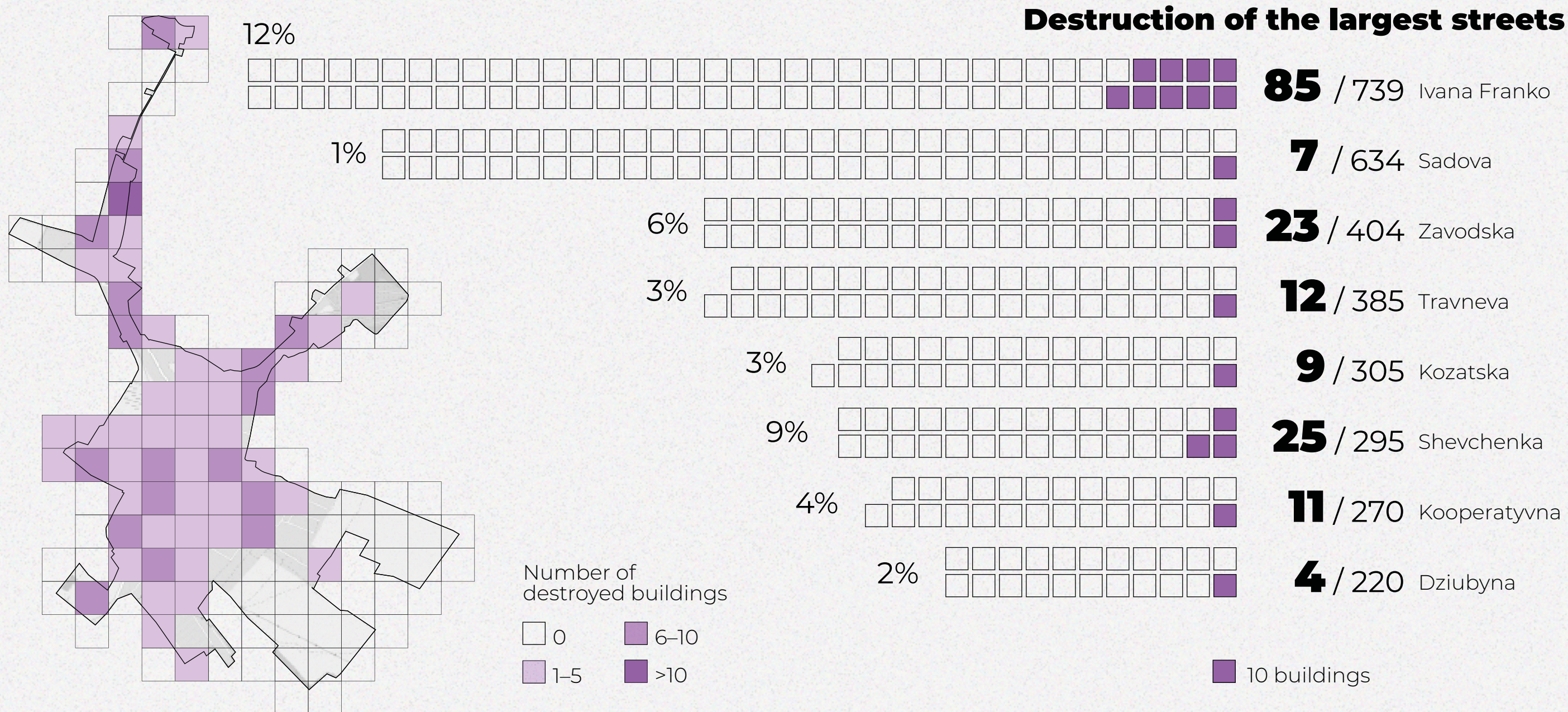
  
 Area  
**34 m<sup>2</sup>**

  
 Population  
**2 798 people**

# DIGITIZATION PROCESS



# THERMAL MAP OF DESTRUCTION

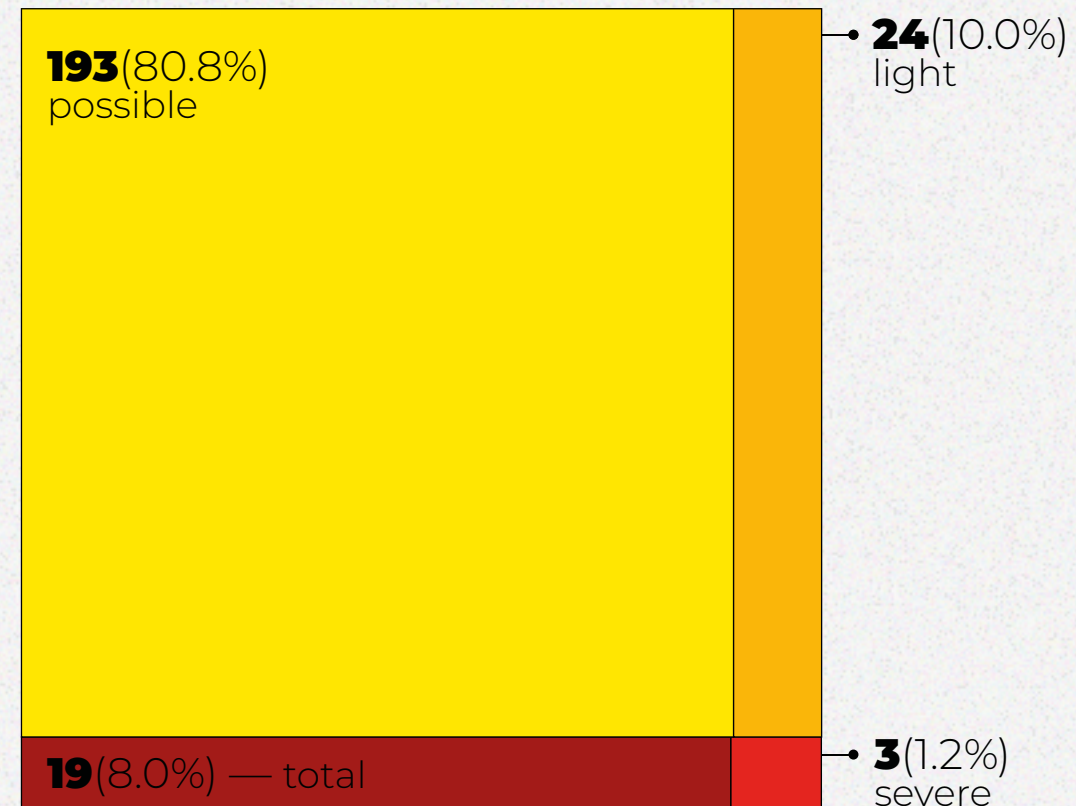


# LEVELS OF DESTRUCTION

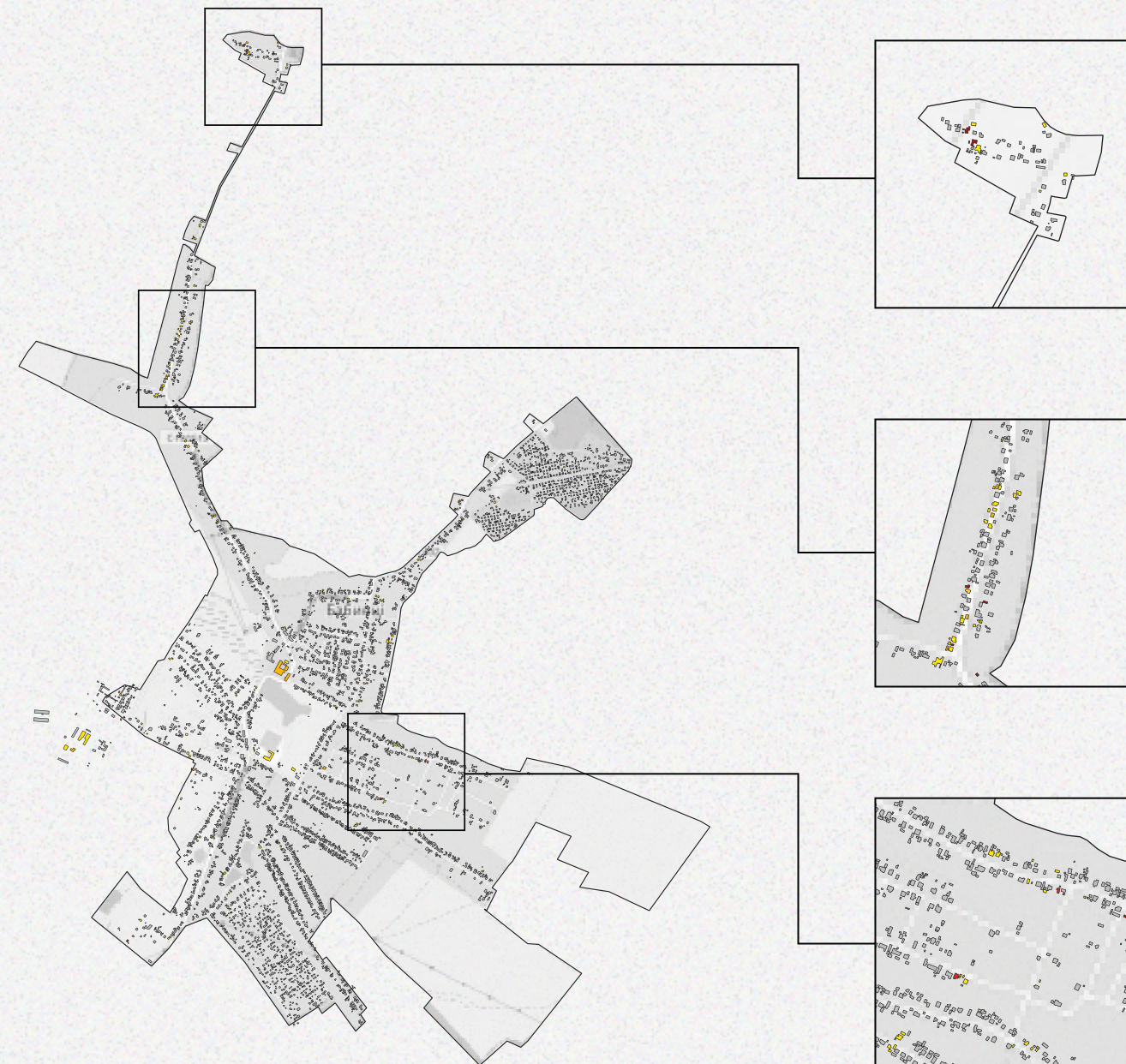
Buildings destroyed:

**238 / 5,046**

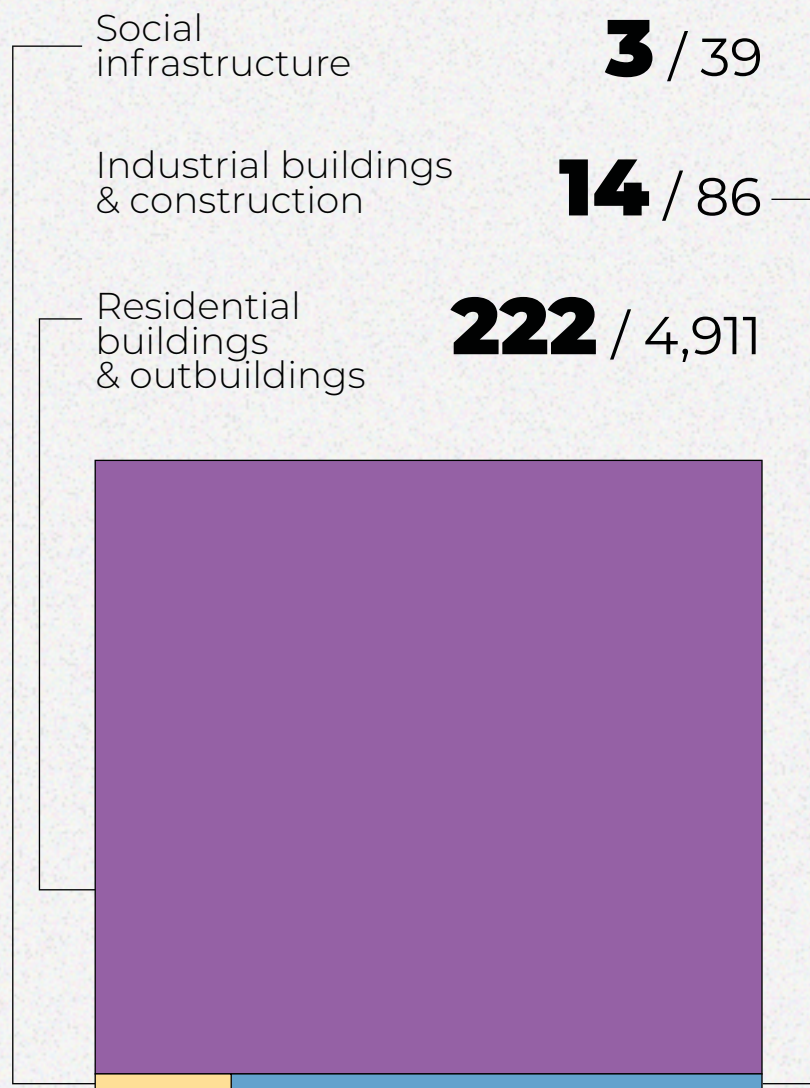
Level of destruction, number of buildings



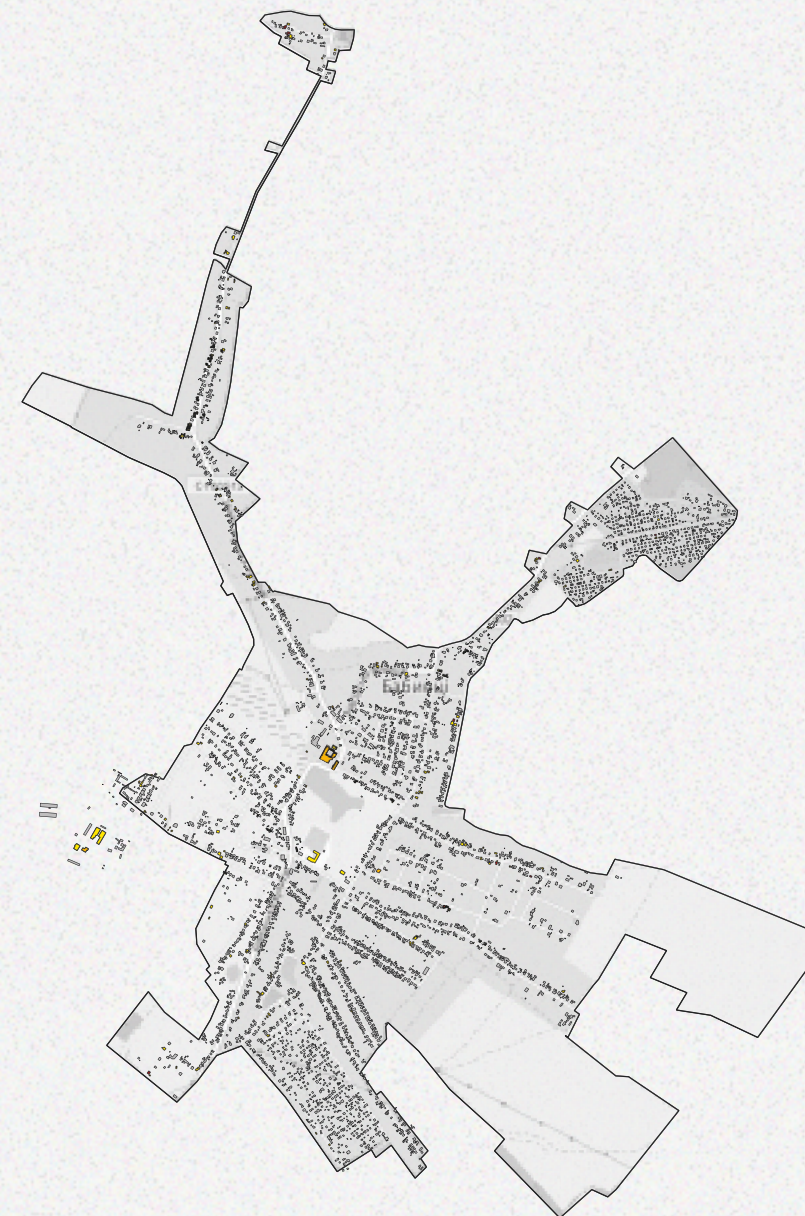
- total destruction
- severe destruction
- light destruction
- possible destruction
- no destruction



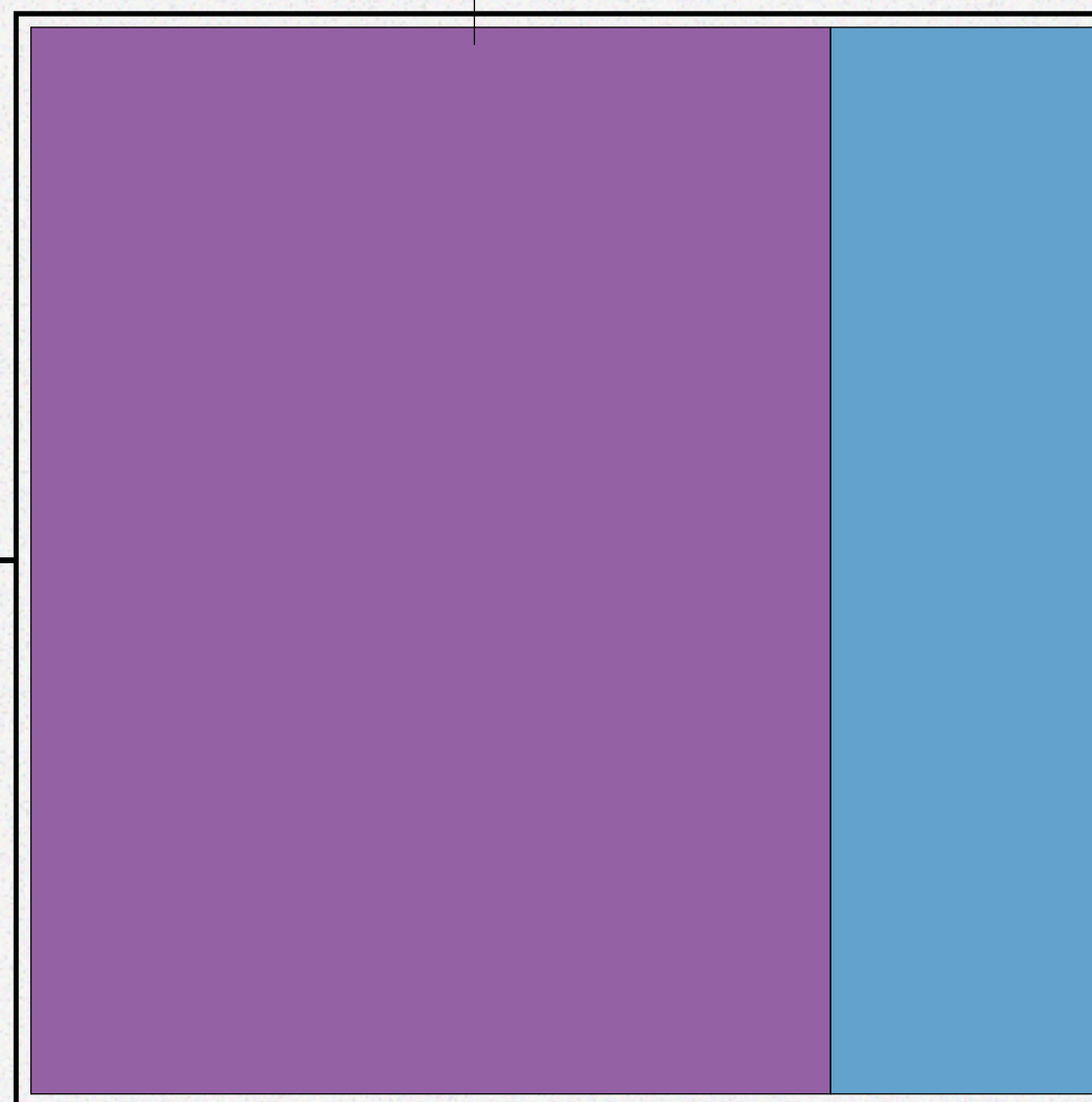
# TYPES OF DESTROYED OBJECTS



- Residential buildings & outbuildings
- Industrial buildings & construction
- Social infrastructure



### Damages by types of buildings



**\$1.09 million**  
Residential buildings  
& outbuildings

**\$0.37 million**  
Industrial buildings  
& construction

Total damages  
**\$1.5 million**

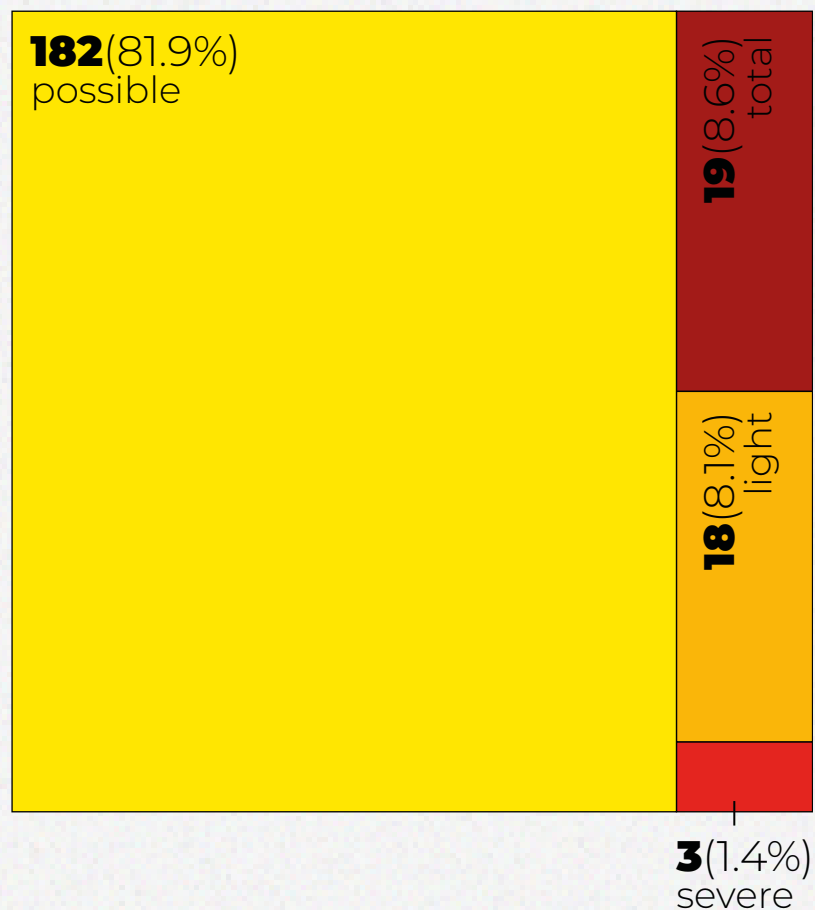


# SCALE OF DESTRUCTION



# SCALE OF DESTRUCTION

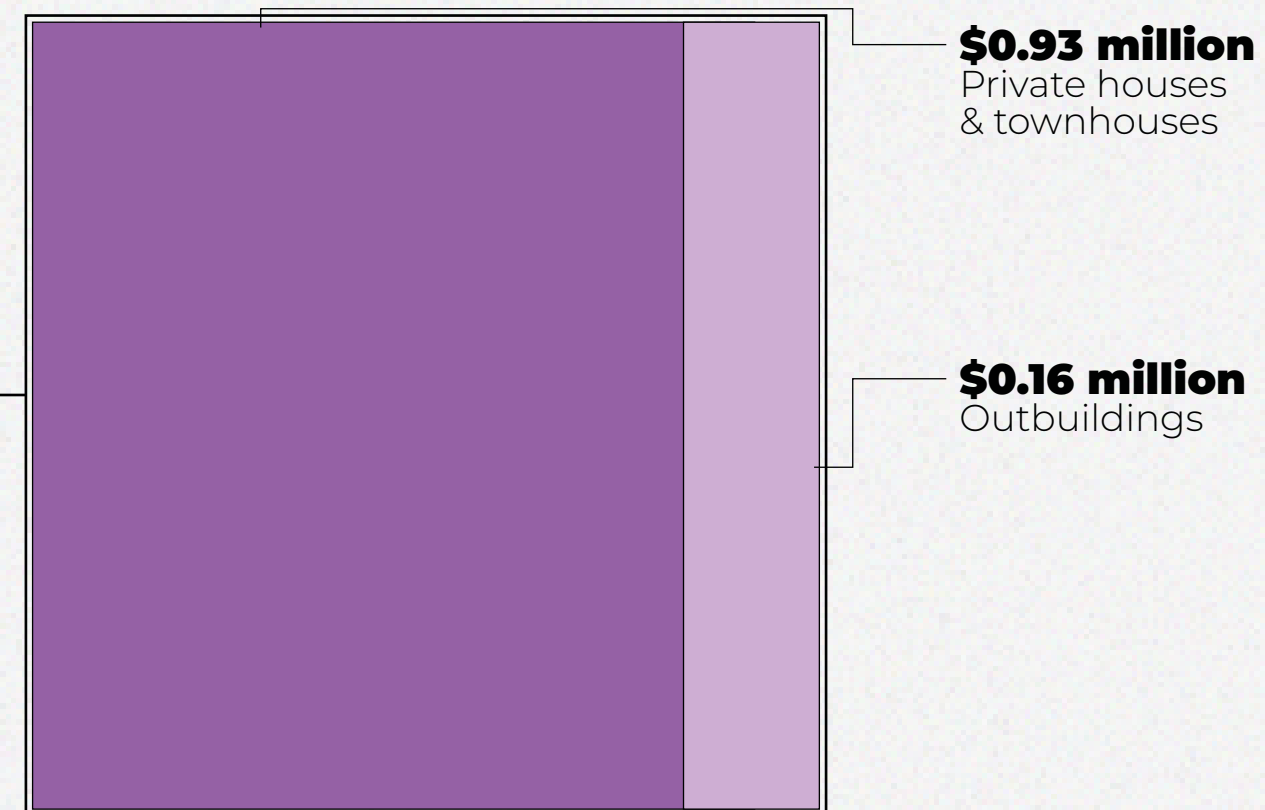
## Level of destruction



## Assessment of damages

Total damages

**\$1.1 million**



# SCALE OF DESTRUCTION

Outbuilding



## The area of destruction and the number of residents who suffered damage

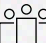
**431.6 ths m<sup>2</sup>** 

**5,194 people** 

no destruction

possible

**15.2 ths m<sup>2</sup>** 

**153 people** 

total

**1.2 ths m<sup>2</sup>** 

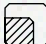
**14 people** 

severe

**0.56 ths m<sup>2</sup>** 

**5 people** 

light

**1.4 ths m<sup>2</sup>** 

**12 people** 

Total area of damage

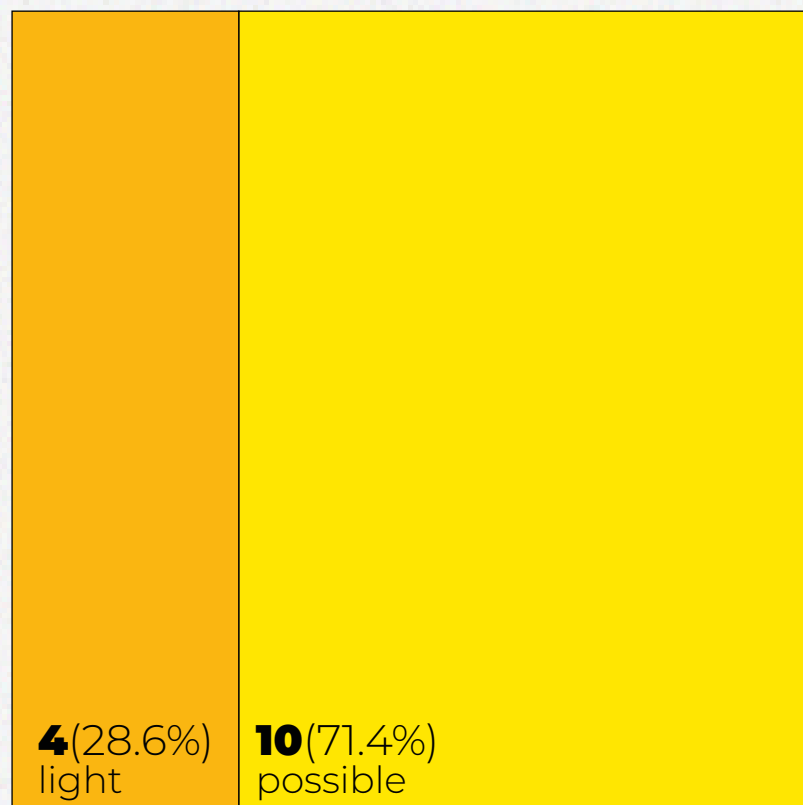
**18.4 ths m<sup>2</sup>**

Number of residents affected

**183**

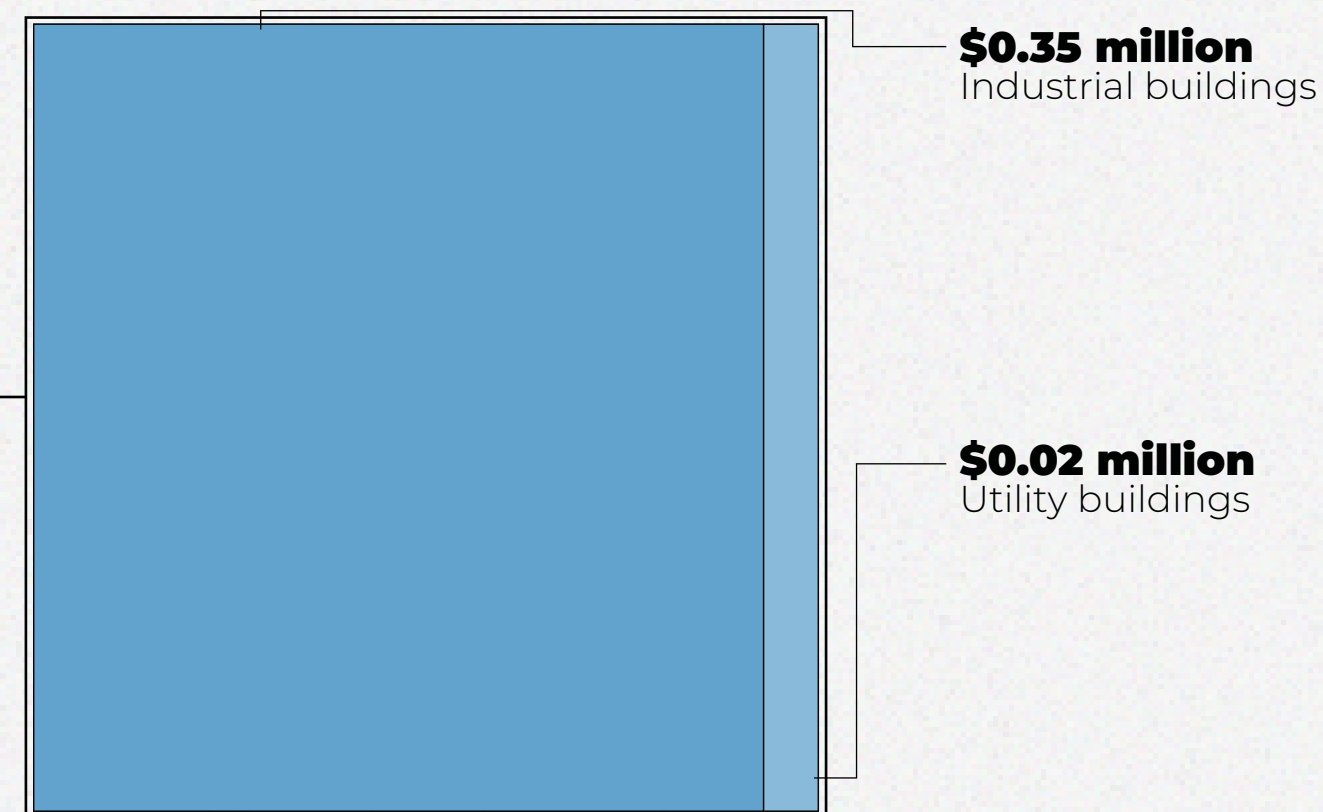
# SCALE OF DESTRUCTION

## Level of destruction



## Assessment of damages

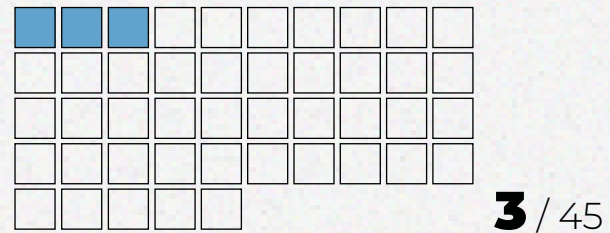
Total damages  
**\$0.4 million**



# SCALE OF DESTRUCTION

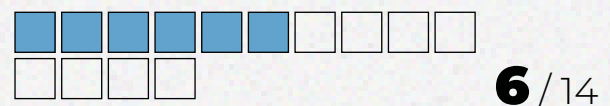
## Number of destroyed buildings

Utility buildings



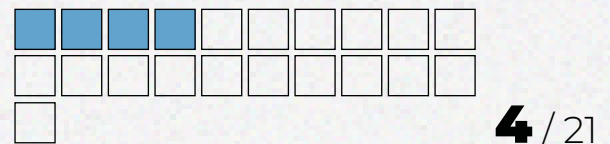
**3** / 45

Industrial buildings



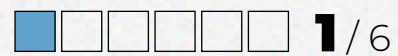
**6** / 14

Construction



**4** / 21

Warehouses



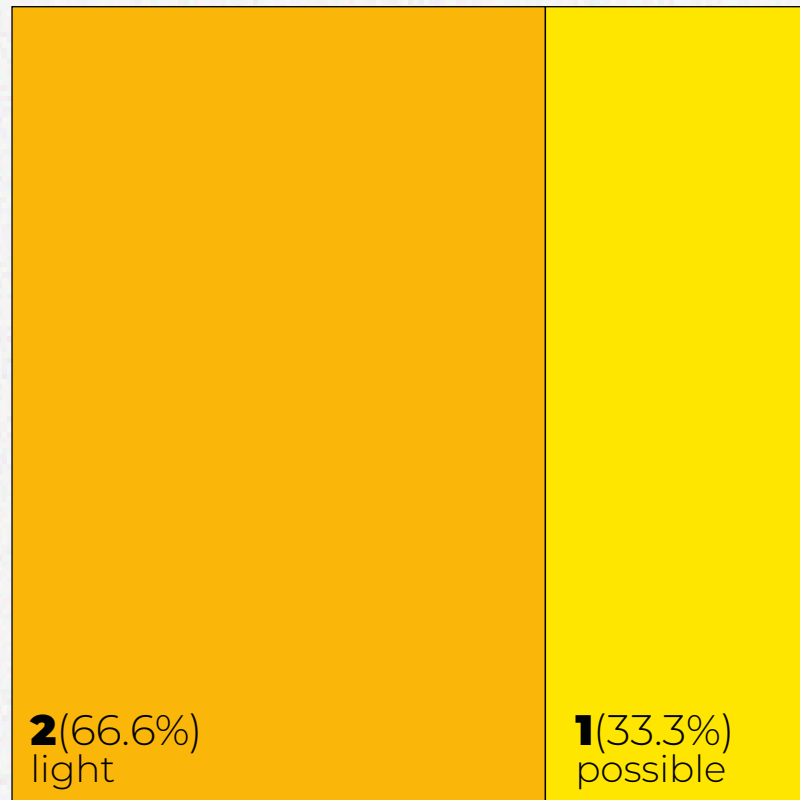
**1** / 6

Industrial object



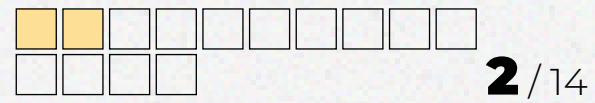
# SCALE OF DESTRUCTION

## Level of destruction

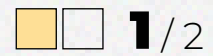


## Number of destroyed buildings

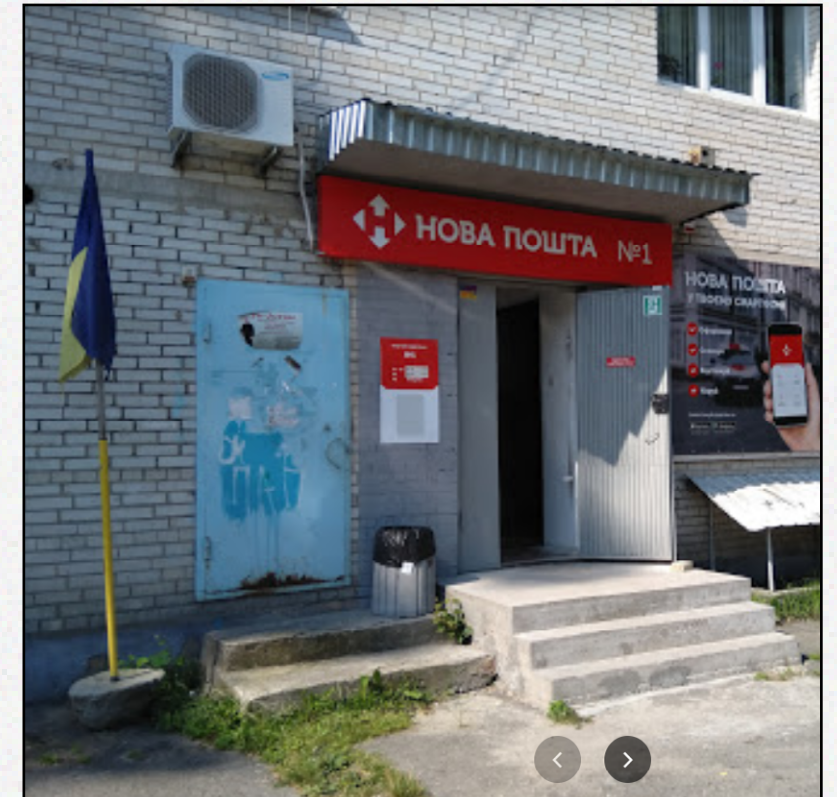
Buildings of  
general purpose



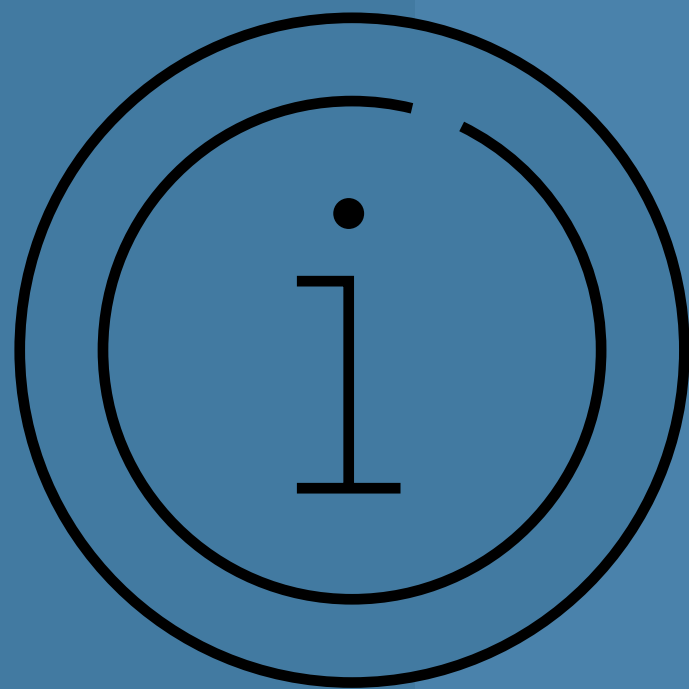
Educational  
institutions



Nova Poshta office



# METHODOLOGIES & ADDITIONAL INFORMATION



# HOW WE DETERMINE LEVELS OF DESTRUCTION

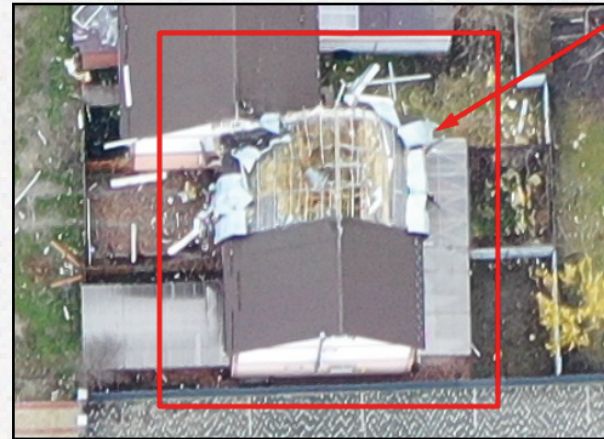
## Total destruction



Appointed when the original structure of the building is no longer detectable restoration is impossible, namely:

- the building is completely or significantly destroyed (> 50%);
- only part of the building collapsed to the foundation.

## Severe destruction



Implies significant visible damage to the building and its structure, which includes:

- collapse of part of the roof;
- serious destruction and damage to the walls.

## Light destruction



Implies minor partial damage to the building and its structure:

- minor damage to the roof,
- collapse of chimneys,
- damage to facade, decorative and removable elements,
- a large amount of debris.

## Possible destruction



Intended for buildings that are difficult to interpret due to lower image quality (for example, shadow or poor resolution due to high angle of shooting).

Visual signs may include be small amounts of debris, gravel or sand around the building.



## 1. Assumptions

The following fractions were used for calculations:

**100%**

of the replacement cost of total destruction

**50%**

of the replacement cost of severe destruction

**10%**

of the replacement cost of light destruction

**0%**

of the replacement cost of possible destruction

## 2. Value determination



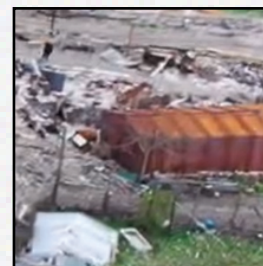
### Large objects

The assessment of large objects, in particular enterprises, is calculated individually on the basis of financial statements and other public sources regarding value information.



### Medium objects

Medium facilities, in particular, social infrastructure, trade objects, and services (health, education and culture, shops, hotels, restaurants, etc.) are calculated on the basis of average cost data, taking into account the type of area (urban/rural).



### Small objects

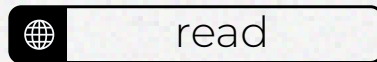
Small objects, which include residential buildings, outbuildings and garages, are calculated based on the average footage (taking into account the area and type of area) and the cost per square meter (nominal cost + cost of redecoration repairs + cost of dismantling).

# BABYNTSI THROUGH THE EYES OF BEHOLDERS

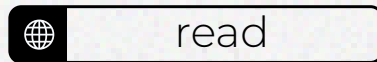
The Security Service of Ukraine identified Kadyrov's friend who tortured a minor during the temporary occupation of Kyiv region



Babyntsi. Memories of the occupation: «Everyone worked for victory»



Two collaborators were detained in Babyntsi, Kyiv region



«I dug a grave for myself», - the village head of Babyntsi about the interrogations and torture by the Russian occupiers



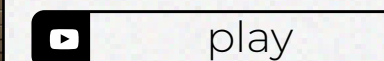
They searched for vodka and shot for fun: people from Babyntsi remember how they survived the occupation



«We didn't even have anything to eat». Babyntsi in Kyiv region. History of the occupation.



A resident of the village talks about what he experienced during the occupation in Babintsy

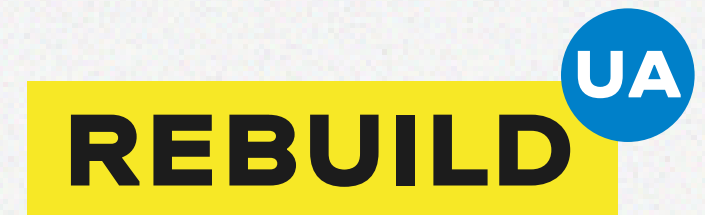
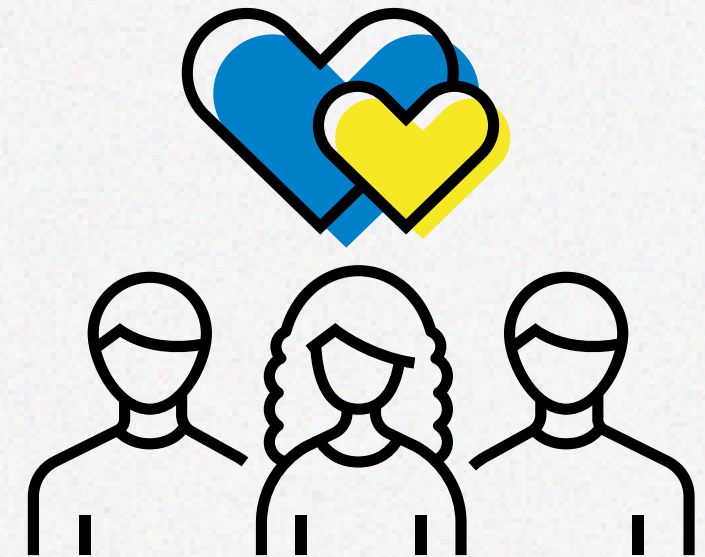


# GRATITUDE TO VOLUNTEERS

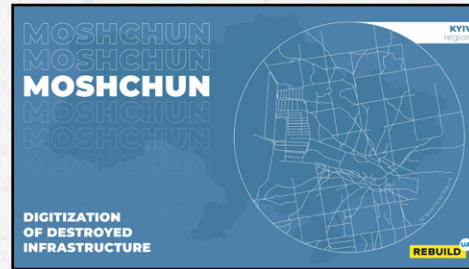
Being a volunteer is a necessary and responsible mission, because the contribution of every citizen is important for the reconstruction of the country. The active position, engagement and tireless work of volunteers support the work of the RebuildUA project team, bringing us closer to the desired result.

## **These people helped RebuildUA digitize the destruction of Babyntsi:**

Valentyn Shkliarenko  
(completely on his own)



# PREVIOUS REPORTS



**Moshchun,**  
Buchanskyi district,  
Kyiv region

↓ download



**Horenka,**  
Buchanskyi district,  
Kyiv region

↓ download



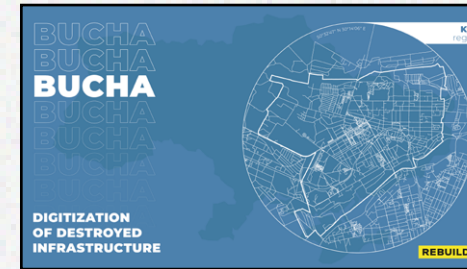
**Ozera,**  
Borodianskyi district,  
Kyiv region

↓ download



**Irpın,**  
Buchanskyi district,  
Kyiv region

↓ download



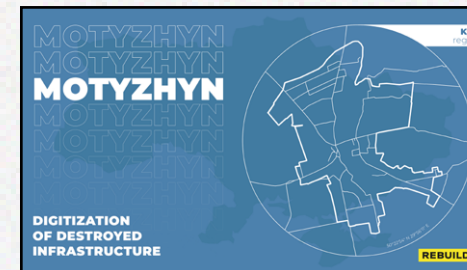
**Bucha,**  
Buchanskyi district,  
Kyiv region

↓ download



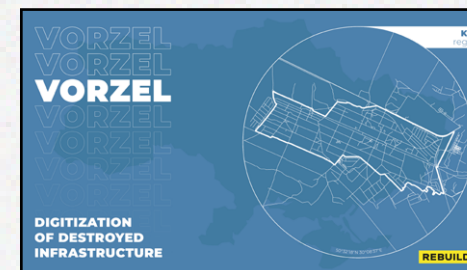
**Hostomel,**  
Buchanskyi district,  
Kyiv region

↓ download



**Motyzhyn,**  
Buchanskyi district,  
Kyiv region

↓ download



**Vorzel,**  
Buchanskyi district,  
Kyiv region

↓ download

# REBUILD



[rebuildua.net](http://rebuildua.net)

### Partners:

Assessment of losses and damages, budgeting:



Financial and technical support



Shooting of settlements



Digitization of geospatial information:



Visual style and content:



Support in cooperation with public authorities:



Cooperation & analysis of community economy, Vkursi Hromada:



Creation of an online map of destroyed new buildings



### Supported by:

