




Industry solutions for Bearing productions

© INTRAMOTION UKRAINE LLC - Jan 2022

A photograph of an industrial automation system. In the foreground, a red robotic arm is positioned over a conveyor belt. The background shows various mechanical components, including rollers, guides, and structural frames, all part of a complex production or transportation system.

INTRAMOTION is a system integrator and components supplier for Automation of product transportation at production and warehouse

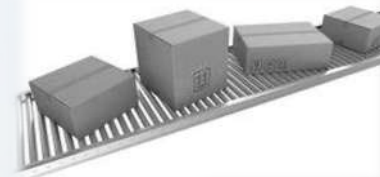
2016

Entering Eastern Europe market with MS Plus Automation



2019

Partnership agreements with Festo, Omron and Habasit



2021

Machine vision division. IntraMotion became sole representative of Sensopart in Ukraine



9 years of experience in factory automation logistics

2013

Brand IntraMotion starts in 2013, when the company with the same name was founded in Lviv, Ukraine, focused in development and production of conveyors, based on a modular system.



2018

IntraMotion became an exclusive representative of FlexLink in Ukraine, Georgia, Azerbaijan and Moldova.



2020

Start of production of own roller and belt conveyors



A photograph of a complex industrial machine, likely a bearing production line. The machine features a series of rollers and guides, with blue and white cables connected to various components. A red semi-transparent banner is overlaid across the middle of the image, containing white text. The background is slightly blurred, showing more of the factory environment.

Since 2014 INTRAMOTION successfully realized various complicity projects for bearing productions



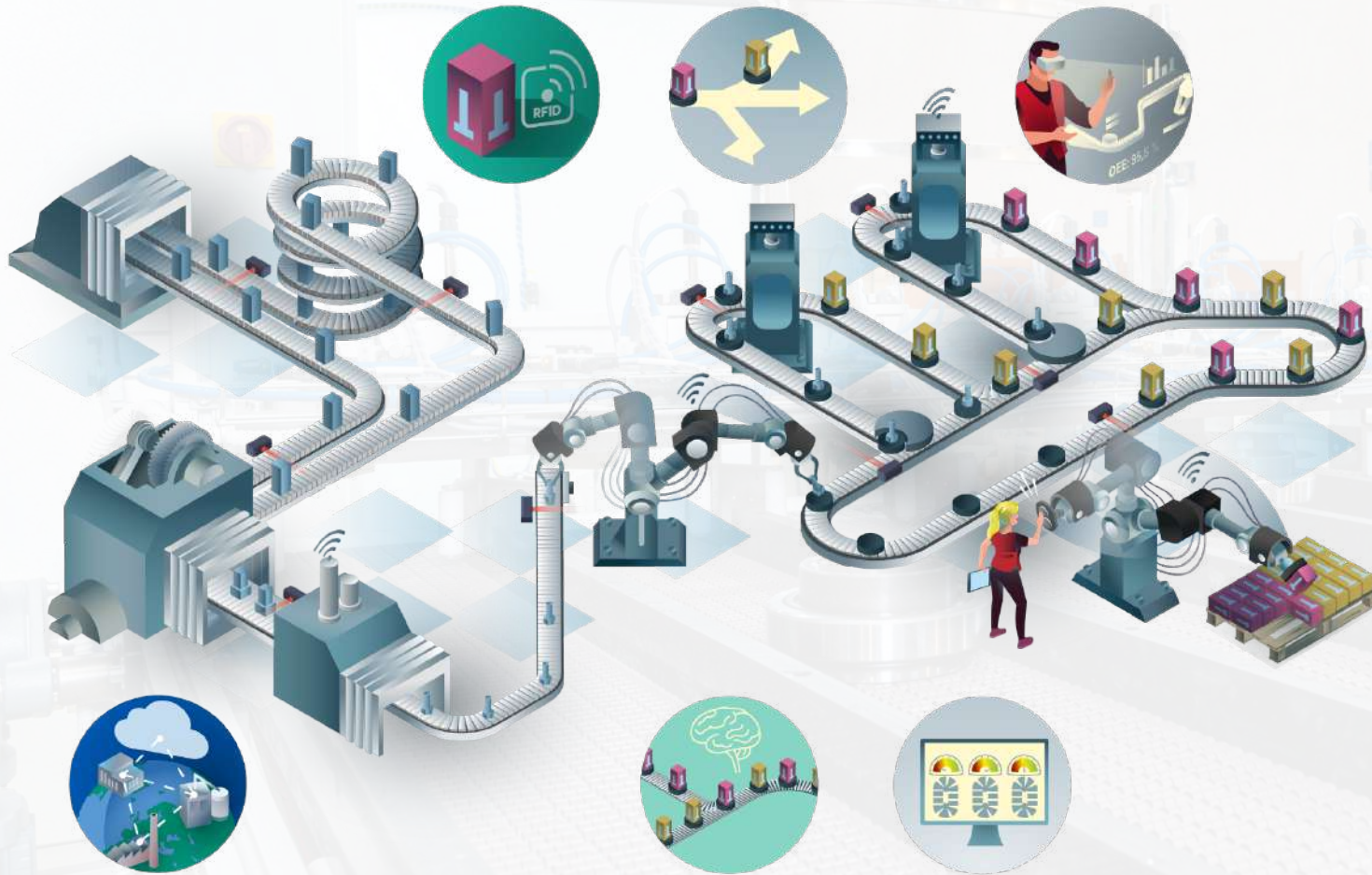
- Solutions and services for production flows
- Conveyor systems and components
- Machine vision
- Pelletizing solutions
- Work safety solutions
- Line design and line design tools
- Line automation and controls
- Individual industry solutions incl. R&D



A photograph of an industrial factory floor. In the foreground, there is a large, red, semi-transparent overlay containing text. Below the overlay, a conveyor belt system is visible, with various mechanical components and a blue vertical pipe. The background shows a complex network of metal structures and machinery.

Our offer have been grown continuously, and as of today we can offer majority of solutions for product transportation within production cycles.

Starting from efficient working areas, simple conveying, and finishing with fully automatic green flow product logistic



CONVEYING AND BUFFERING

Page 8-18

LINE AUTOMATION AND CONTROLS

Page 19-24

QUALITY AND CONTROL

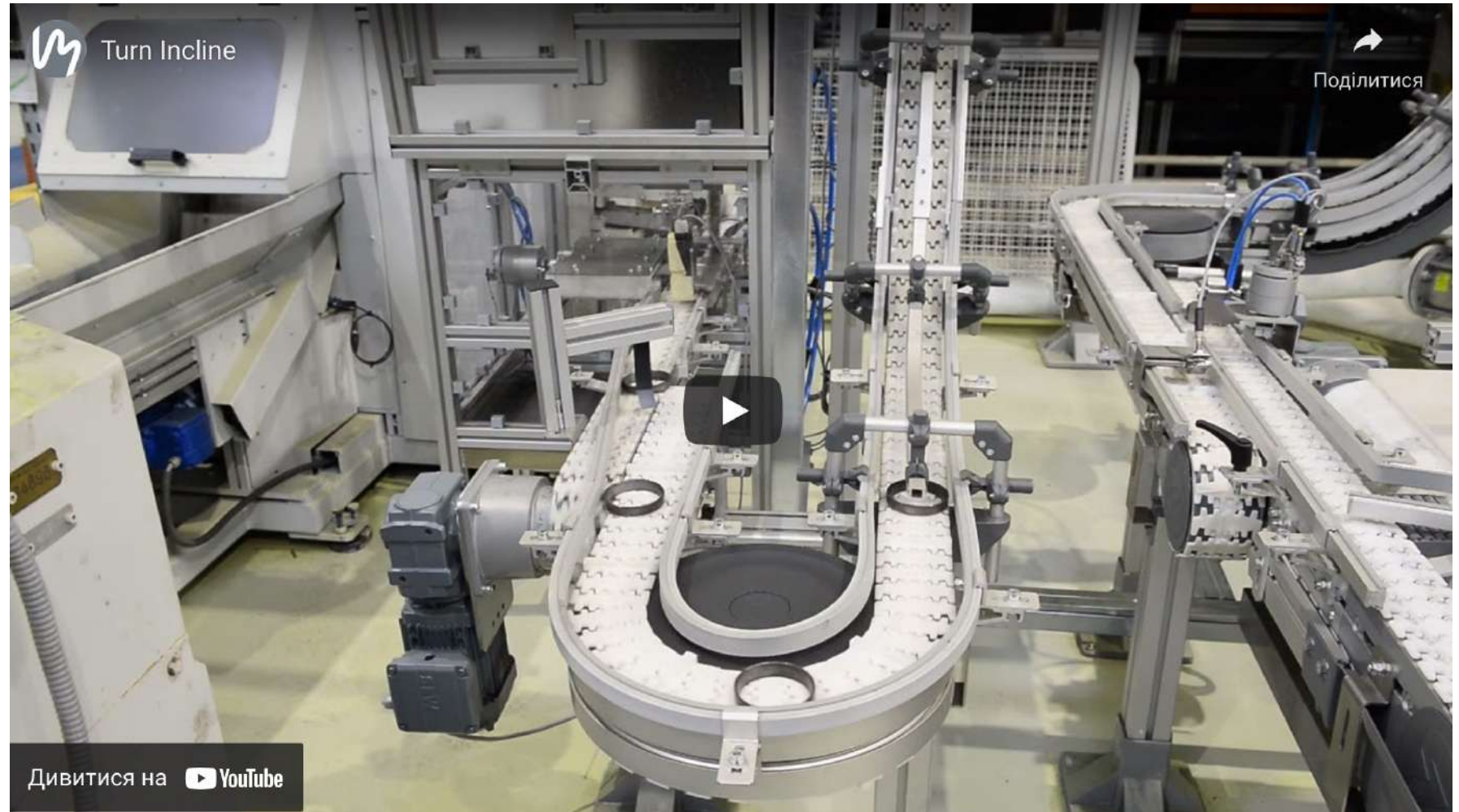
Page 25-33

EQUIPMENT INTEGRATION

Page 34-41

Modular plastic chain conveyors are proper solution in limited space areas

Small radius, accumulation possibility, fast and simple installation, flexibility in modification



[Click to view video in a browser](#)



**Various Modular Plastic
Chain Conveyors**



**Solutions for accumulation
and buffering**

Steel chain conveyors



Safety guards and enclosure



Packaging area storage

Accumulation tables for inspection and packaging requires effective space usage

Electromechanical randomizer prevents overloads



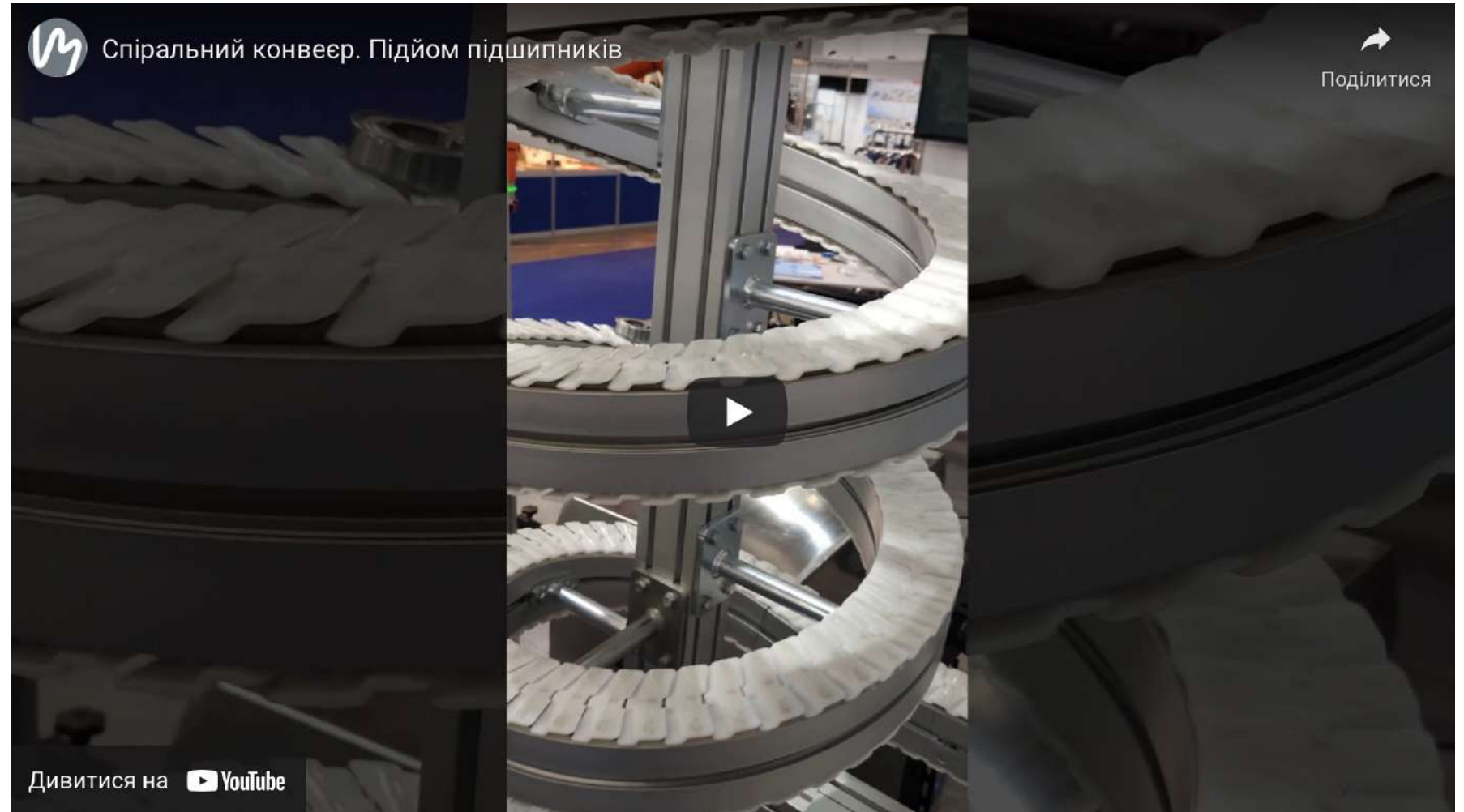
[Click to view video in a browser](#)



Incline conveyor

Limited space at production require effective solutions.

Spiral conveyors connect product flows in different high level and safeguard space at production.



[Click to view video in a browser](#)



Roller conveyor



Chain cleaning module

Continuous product flow require redirection between the lines, processes and different levels.

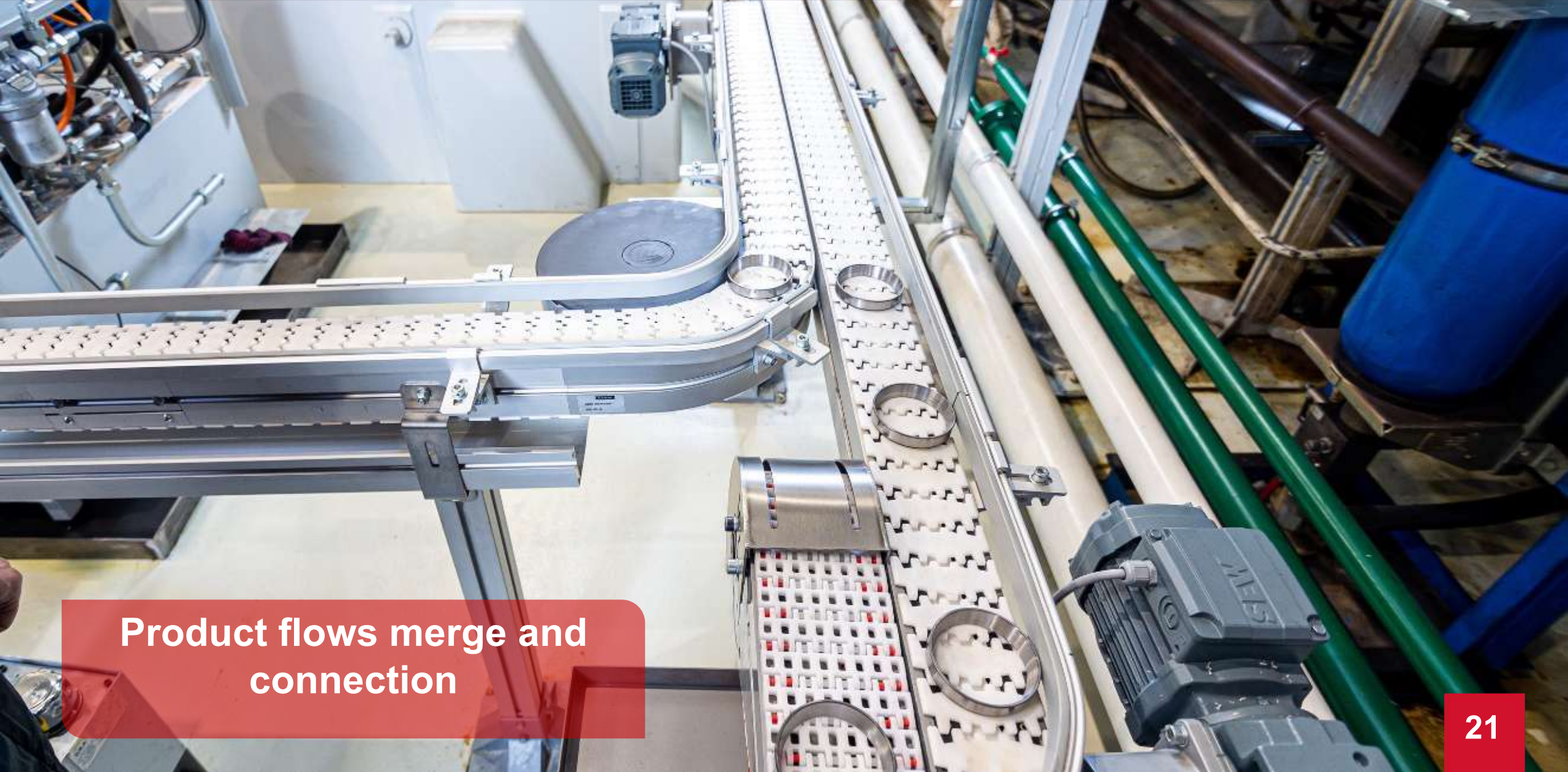
Such solutions equipped with presence sensors, accumulation areas, products positioning modules or fault modules.



[Click to view video in a browser](#)



Redirection of
product flows



Product flows merge and connection



**Integration of the
equipment into continuous
product flows**

Using top levels for transportation is effective to save production area

Lift helps to connect such flows fast and efficient



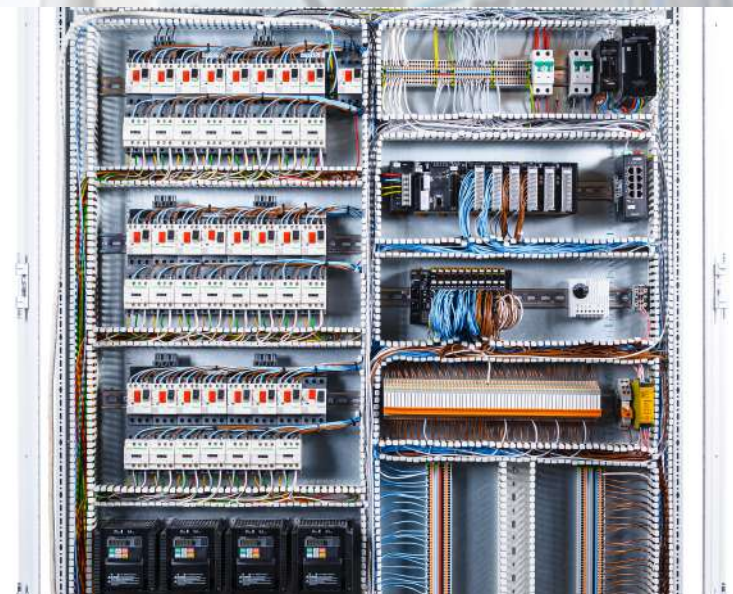
[Click to view video in a browser](#)

Various complicity line control box integration

Control box

HMI panel

Customized interface



A photograph of a modern industrial factory floor. In the foreground, a long conveyor belt is equipped with a series of sensors and cameras, connected by blue cables to a central control cabinet. The background shows various industrial machines, overhead cranes, and a worker in a blue uniform. The scene is brightly lit with overhead industrial lights.

**Complete solutions for
product inspection**

A wide-angle photograph of a modern industrial factory floor. In the foreground, a white metal frame supports a complex assembly of blue and white cables and sensors. Below this, a conveyor belt system is visible, consisting of a grey metal frame and a white plastic chain belt. In the background, various industrial machines, including a large yellow overhead crane, are visible under a high ceiling with exposed steel beams and industrial lighting. The overall scene depicts a sophisticated manufacturing environment.

**Complete solutions for
product inspection**



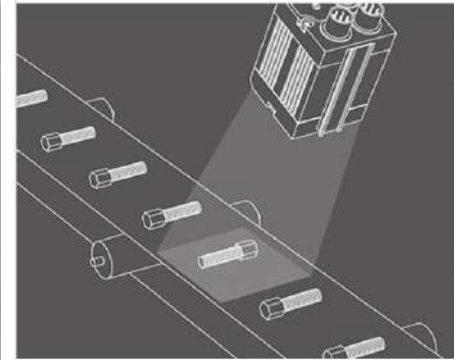
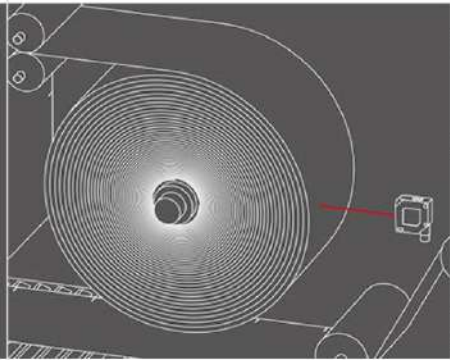
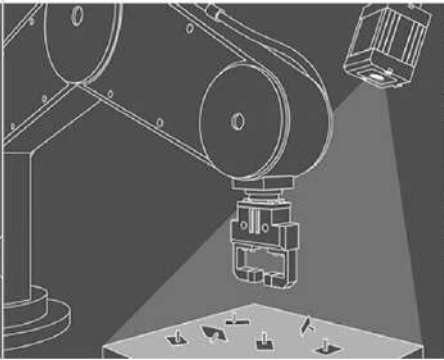
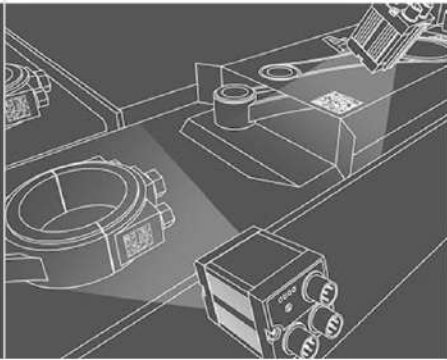
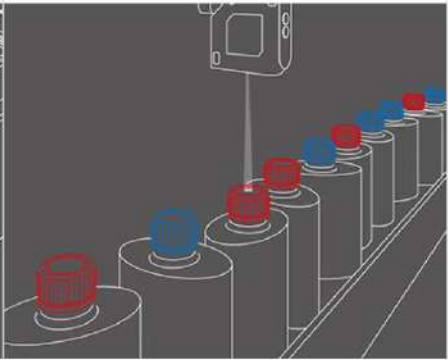
Line control and quality control equipment



Line control and quality control equipment

A composite image showing two views of a SENSOPAR VISOR Object machine vision sensor. The left view shows the sensor mounted on a robotic arm, with a red semi-transparent box overlaid containing the main text. The right view shows the sensor positioned over a conveyor belt with white plastic caps. The background consists of a blue perforated metal grid.

Machine vision solutions helps to prevent quality issues in
automized product flows

Detecting objects	Measurement	Positioning	Identification	Detecting colors, contrasts and luminescences
				
<ul style="list-style-type: none"> • Inspection of presence • Inspection of completeness • Counting and sorting of parts 	<ul style="list-style-type: none"> • Measuring parts • Monitoring sag • Measuring thickness and distance • Checking filling levels 	<ul style="list-style-type: none"> • Pick & Place / Robotics • Front-edge detection • Quality inspection • Position correctness 	<ul style="list-style-type: none"> • Reading of bar codes and data matrix codes • OCR • Tracking of components (track & trace, serialisation) • Color identification 	<ul style="list-style-type: none"> • Checking presence of colored objects • Printed mark detection • Inspection of LEDs • Color inspection • Detection of luminescent objects



Green flow transportation



Special environment.
Weights control zone



**Manual inspection and
packaging zone**



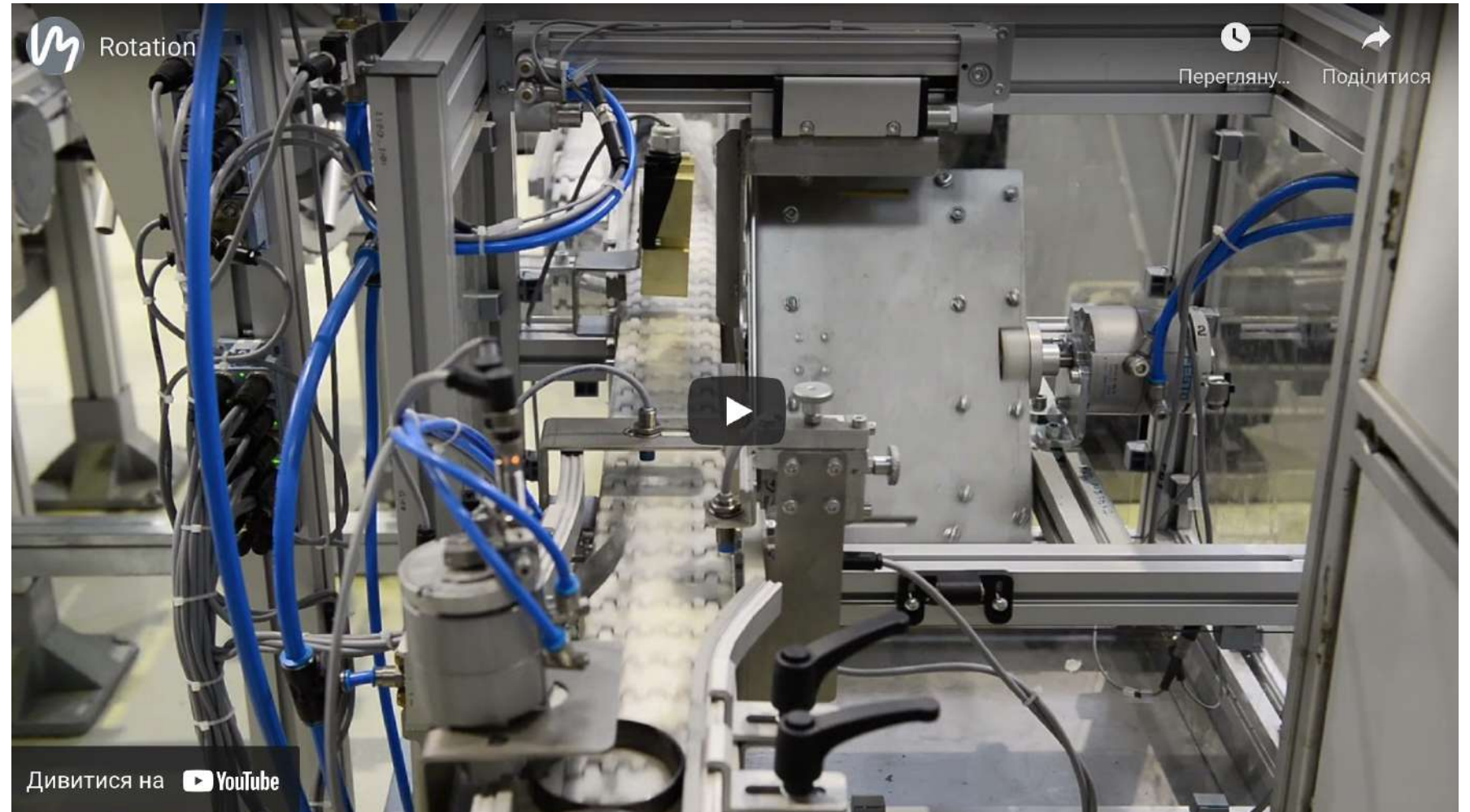
Ring receivers from
processing equipment

A close-up photograph of industrial machinery. A conveyor belt with white plastic ring receivers is moving from left to right. The machinery is made of metal and blue-painted components. Blue cables are visible on the left side. A red banner is overlaid at the bottom left.

**Ring receivers from
processing equipment**

Ring position
check and rotation
module in action

Robust 24/7
solution



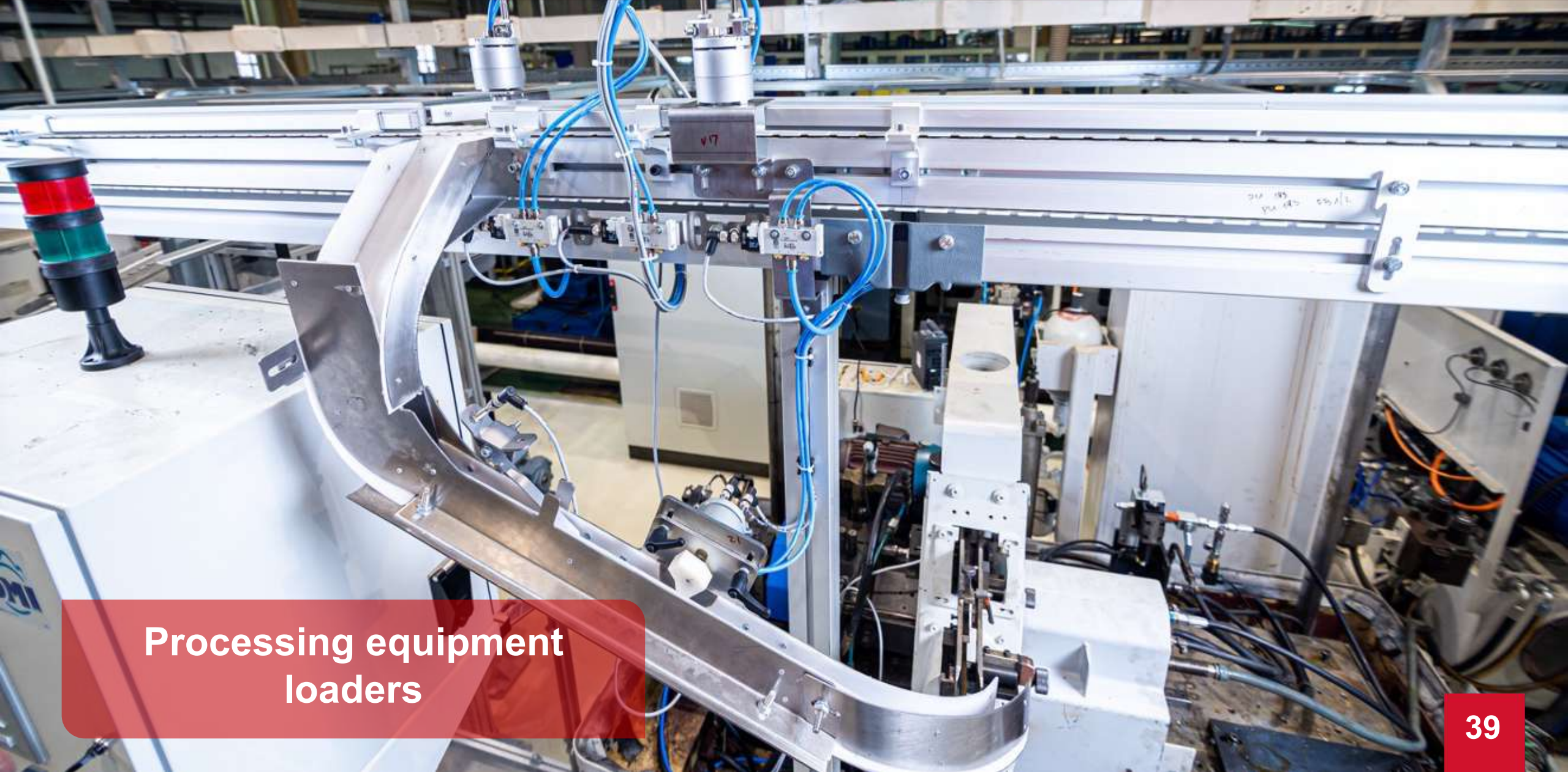
[Click to view video in a browser](#)

A detailed view of an industrial lift module. The module is a complex assembly of metal plates, bolts, and pneumatic cylinders. It is mounted on a track system, likely for a conveyor belt. A blue pneumatic hose is connected to one of the cylinders. The background shows a factory setting with other machinery and blue air tanks.

**Connecting product flows
in different levels with lift
modules**



Processing equipment
loaders



Processing equipment
loaders

Ring position
check and and
loading
mechanism



[Click to view video in a browser](#)



Washing and conservation
modules

Nobody knows your business better than you.
That's why we'll never tell you what to do and what not.
But if you want to see your production even more efficient, then
our solutions can help you.
Because we will make it smarter, faster, more efficient.
Manufacturing processes will become more valuable, more
flexible, more reliable ...
Actually we will help you to gain a significant edge over your
competitors.

We sincerely looking forward
for a long and mutually
beneficial cooperation



Khmelnytskogo st. 176

79024 Lviv / Ukraine

+38 050 377 75 00

+38 032 253 51 53

order@intramotion.ua

www.intramotion.ua