

ELEVATE YOUR SECURITY PROGRAM WITH RISK-BASED VULNERABILITY MANAGEMENT, ON-PREM

See Everything. Predict What Matters. Managed On-Prem.

"It's a home-run with an all-in-one Tenable solution that enables me to prioritize security risks and assess security posture of my enterprise based on business objectives at any time."

—Healthcare Service Provider

Changing IT landscapes and evolving cyber threats have made periodic scanning and compliance audits ineffective in protecting against modern cyberattacks. To keep your organization safe, you need a vulnerability management solution that gives you complete visibility into your attack surface so you can effectively manage and measure your cyber risk.

Built on leading Nessus technology, Tenable.sc+ is a market leading vulnerability management platform that delivers the next generation of vulnerability management, on prem. Through advanced analytics, customizable dashboards, reports and workflows, Tenable.sc+ helps you master vulnerability management and reduce organizational risk.

Leverage Predictive Prioritization which combines data and threat intelligence across multiple sources to anticipate the probability of a vulnerability being exploited, paired with the criticality of your dynamic assets in an ever-changing environment. The result? – a lens to help view and prioritize vulnerabilities tied with their most critical assets giving you actionable insight for protecting your organization against a business impacting breach.

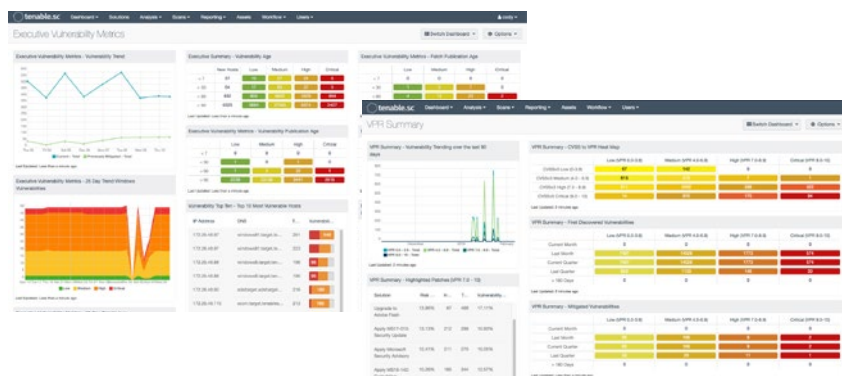


Figure 1: Highly customizable dashboards, reports, workflows and security policies to suit your specific business needs.

Tenable.sc+ includes over 350 pre-built, highly customizable dashboards and reports to give you immediate insight into your security compliance, effectiveness and risk. You can continuously measure, analyze and visualize the effectiveness of your security program, based on high-level business objectives and underlying customizable policies that executives care about.

KEY BENEFITS

- Continuous Visibility**
 Continuously track known and discover unknown assets and their vulnerabilities. Identify threats and unexpected network changes before they turn into breaches.
- Passive Vulnerability Detection**
 Go beyond point-in-time scanning and eliminate blind spots with Passive Vulnerability Detection for assets, log discovery and further analysis for detecting asset changes.
- Prioritize Assets & Vulnerabilities**
 Combine asset and vulnerability data, threat intelligence and data science for easy to understand risk scores to quickly identify the vulnerabilities and their most critical assets that pose the highest risk to the business.
- Breadth and Depth of Coverage**
 Tenable Research works closely with the security community to discover new vulnerabilities and provide insights to help organizations mature their vulnerability assessment practices. With more than 67K vulnerabilities, Tenable has the industry's most extensive CVE and security configuration support to help you understand all of your exposures.
- Automate Processes**
 Leverage a fully documented API and pre-built integrations to import third-party data, automate scans, and share data with your IT systems.

KEY CAPABILITIES

Manage Your Data, Your Way

Tenable.sc+ is the leading on-prem option for Vulnerability Management. Manage your data your way with on-prem or hybrid deployment options that align with your most complex deployment requirements, all while reducing risk for the organization.

Comprehensive Assessment Options

Tenable.sc+ gives you unified visibility of your entire attack surface. It leverages Nessus Sensors, a mix of active scanners, agents, passive network monitoring, and CMDB integrations to maximize scan coverage across your infrastructure to reduce vulnerability blind spots. This mix of data sensor types helps you track and assess both known and unknown assets and their vulnerabilities.

Passive Vulnerability Detection

Go beyond point-in-time scanning and eliminate blind spots with Passive Vulnerability Detection for assets, log discovery and further analysis for detecting asset changes.

Vulnerability Prioritization Based on Actual Risk

Tenable.sc+ combines vulnerability data, threat intelligence and data science to give you an easy to understand risk score so you can prioritize vulnerabilities and know what to fix first. You can quickly assess risk and identify vulnerabilities with the highest impact to your organization.

Simplified Vulnerability Management

With intuitive reports, dashboards visualizations and an easy to use interface, Tenable.sc+ makes common tasks, such as configuring scans, running an assessment, and analyzing results, easier than ever. Pre-defined scan templates, configuration and compliance audit checks that follow best practices frameworks to help you protect your organization with a fraction of the effort otherwise needed. Customize your reporting and analysis with pre-configured, out-of-the-box dashboards or quickly build your own from a blank canvas to meet organizational needs.

Understanding Asset Criticality

Leverage Tenable's Asset Criticality Rating (ACR) offered in Tenable.sc+ to predict the priority of assets based on indicators of business value and criticality. Pairing Asset Criticality with Predictive Prioritization brings a tailored approach to vulnerability management to show what vulnerabilities and their associated assets to prioritize first.

Streamlined Compliance

Understand and report on compliance with pre-defined checks, metrics and proactive alerts on violations for industry standards and regulatory mandates. Industry standards include CERT, NIST, DISA STIG, DHS CDM, FISMA, PCI DSS, HIPAA/HITECH and many more.

Tenable Research

Tenable.sc+ is backed by Tenable Research, delivering world-class Cyber Exposure intelligence, data science insights, alerts and security advisories. Frequent updates from Tenable Research ensure the latest vulnerability checks, zero-day research, and configuration benchmarks are immediately available to help you secure your organization.

Leverage Tenable.sc Director

Tenable.sc Director is an add-on to provide centralized management and view of your risk posture to reduce complexity and to gain complete visibility across multiple consoles for your entire deployment.

Pre-Built Integrations and a Documented API and Integrated SDK

Tenable.io has out of the box integrations available for credentialed scanning, SIEM, SOAR, ticketing & patching systems and other complementary solutions, so you can easily streamline your vulnerability management process. A complete listing can be found [here](#). Additionally, you can easily create your own integrations with Tenable.sc+ by leveraging a fully documented API. There is no extra cost to use these tools to maximize the value of your specific vulnerability management use cases.

For More Information: Please visit tenable.com
Contact Us: Please email us at sales@tenable.com or visit tenable.com/contact



COPYRIGHT 2022 TENABLE, INC. ALL RIGHTS RESERVED. TENABLE, TENABLE.IO, NESSUS, ALSID, INDEGY, LUMIN, ASSURE, AND LOG CORRELATION ENGINE ARE REGISTERED TRADEMARKS OF TENABLE, INC. OR ITS AFFILIATES. TENABLE.SC, TENABLE.OT, TENABLE.AD, EXPOSURE.AI, AND THE CYBER EXPOSURE COMPANY ARE TRADEMARKS OF TENABLE, INC. OR ITS AFFILIATES. ALL OTHER PRODUCTS OR SERVICES ARE TRADEMARKS OF THEIR RESPECTIVE OWNERS.