

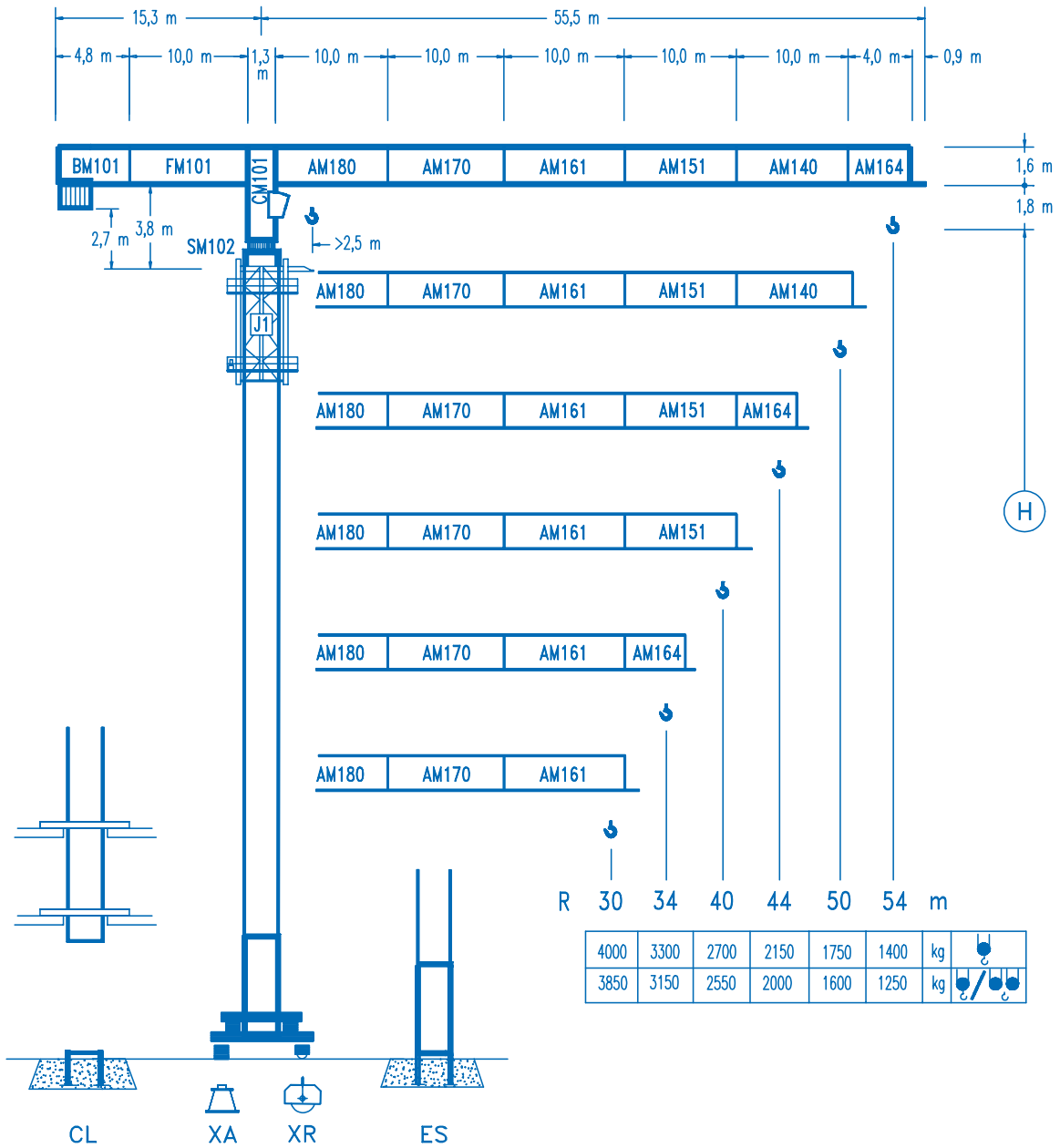


COMANSA

LINDEN 1000

10 LC 110

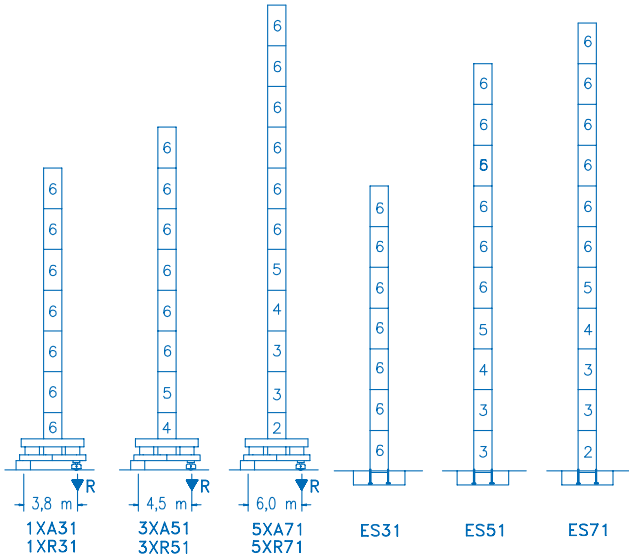
8 t



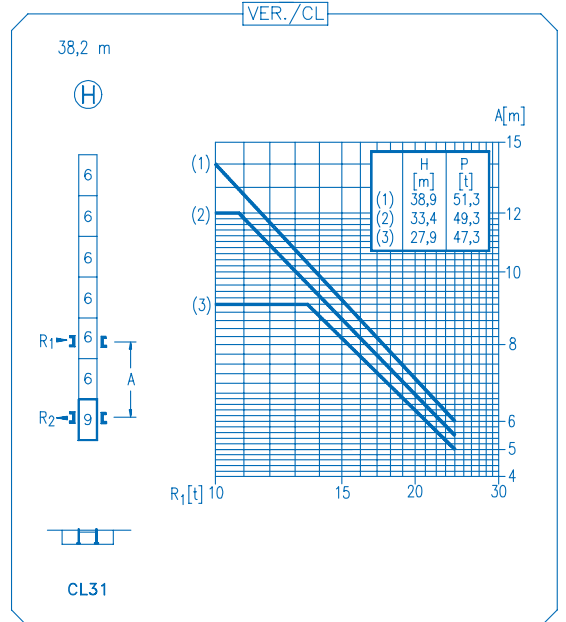
CE
DIN 15018 H1 B3

R		R(Cmax)	Cmax	25	30	34	40	44	50	54	
54		22,6 m 12,1 m	4000 8000	3565 3445	2890 2760	2490 2355	2050 1905	1820 1675	1550 1400	1400 1250	
50		24,9 m 13,3 m	4000 8000	3975 3855	3230 3095	2790 2655	2300 2160	2050 1905	1750 1600		
44		25,9 m 13,7 m	4000 8000	4000 4025	3375 3235	2920 2780	2410 2265	2150 2000			
40		28,4 m 15,1 m	4000 8000	4000 4485	3765 3620	3260 3115	2700 2550				
34		28,7 m 15,2 m	4000 8000	4000 4535	3805 3660	3300 3150					
30		30,0 m 15,8 m	4000 8000	4000 4760	4000 3850						

42,1 m (H) 47,6 m (H) 64,4 m (H) 40,6 m (H) 57,1 m (H) 62,6 m (H)



N Ref.	h
2 TS15	5,5 m
3 S14	5,5 m
4 TS14	5,5 m
5 S13	5,5 m
6 S12	5,5 m
9 CLS13.1	3,1 m



R. máx.	En servicio	1XR31 61,2 t
	In operation	3XR51 56,5 t
	En service	5XR71 71,1 t
	In Betrieb	

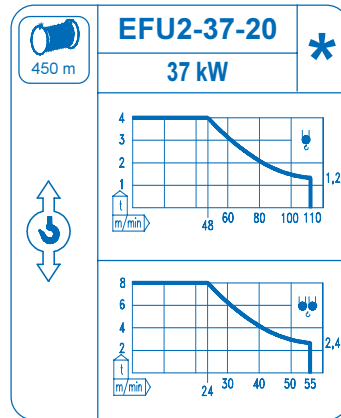
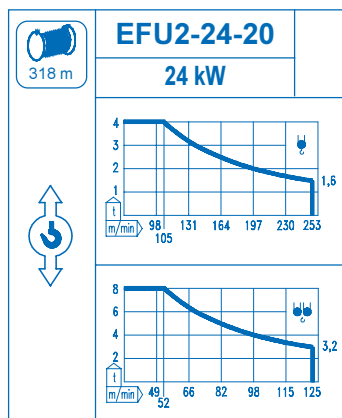
R. máx.	Fuera de servicio	1XR31 73,4 t
	Out of service	3XR51 81,5 t
	Hors service	5XR71 111,7 t
	Ausser Betrieb	

CFU-4.0
4 kW
0 ⇄ 66 m/min

GR-12
120 Nm
0 ⇄ 0,7 rpm

TS2-5.5 **TRA-7.5**
2 x 55 Nm 2 x 75 Nm
0 ⇄ 20 m/min
1XR31 3XR51 5XR71

TRA-7.5VC
2 x 75 Nm
0 ⇄ 20 m/min
5XR71



Tensión de alimentación	400 V
Operating voltage	3 ph
Tension de service	50 Hz
Betriebsspannung	

Opcional Optional En option Kaufoption	*
---	----------



Construcciones Metálicas COMANSA S. A.

Tel: (34) 948 335 020
Fax: (34) 948 330 810
e-mail: info@comansa.com
www.comansa.com

Polígono Industrial de Areta
E-31620 HUARTE-PAMPLONA.- SPAIN

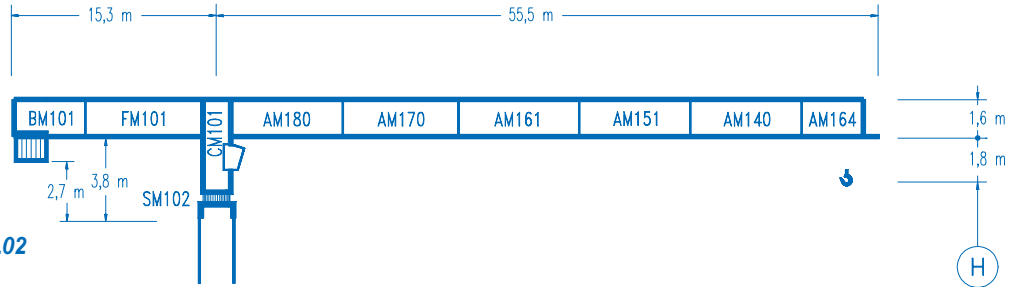


COMANSA

LINDEN 1000

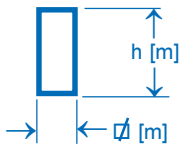
10 LC 110

∅ 2,0 m

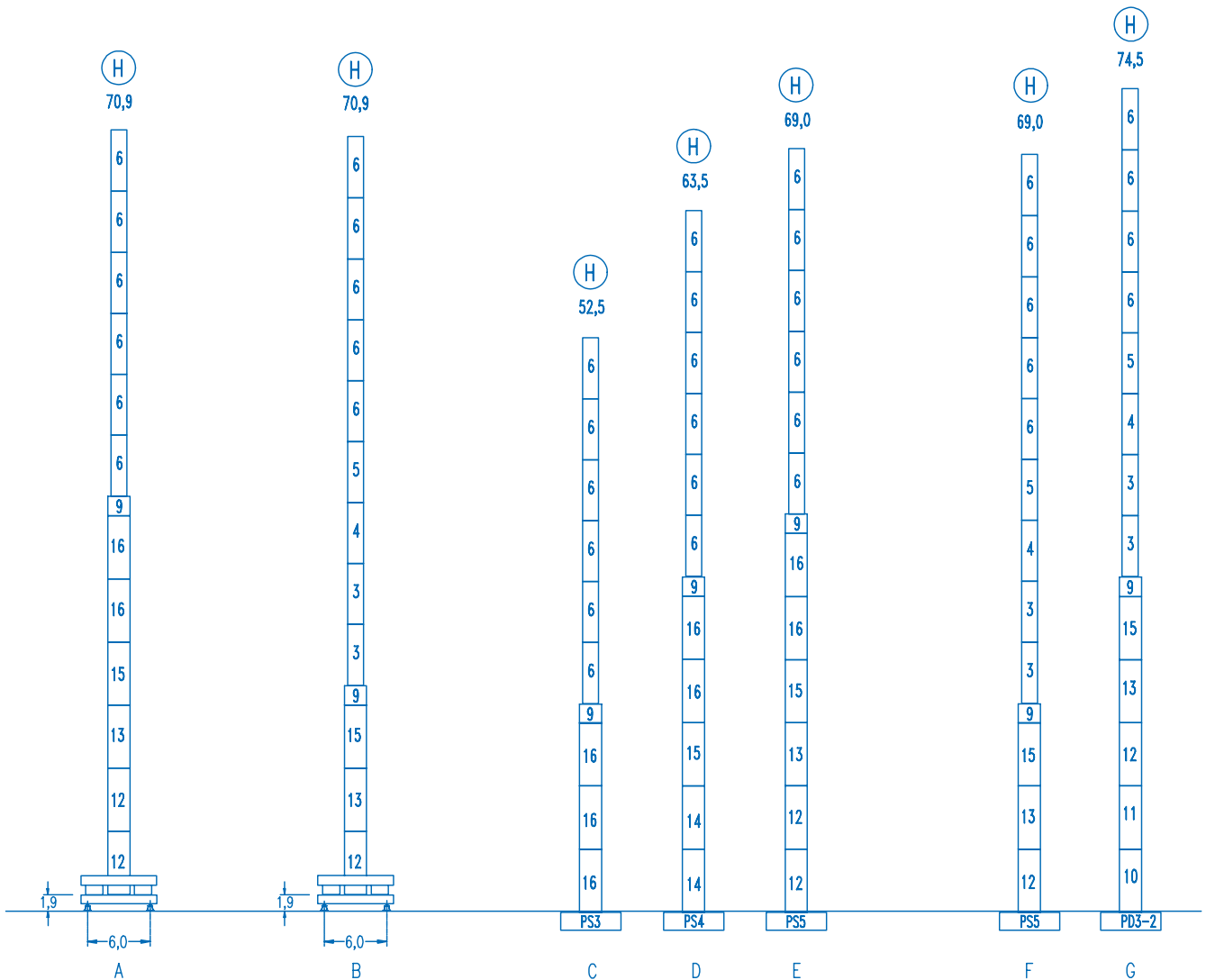


Configuraciones ver
Configuration see
Configurations voyez
Komponenten siehe

DS.0431.02



n°	Ref.	∅	h	n°	Ref.	∅	h	n°	Ref.	∅	h	n°	Ref.	∅	h
3	S14	1,6	5,5	9	TMS23	2,0	1,0	12	S25	2,0	5,5	15	TS24	2,0	5,5
4	TS14	1,6	5,5	10	D23	2,0	5,5	13	TS25	2,0	5,5	16	S23	2,0	5,5
5	S13	1,6	5,5	11	TD23A	2,0	5,5	14	S24	2,0	5,5				
6	S12	1,6	5,5												



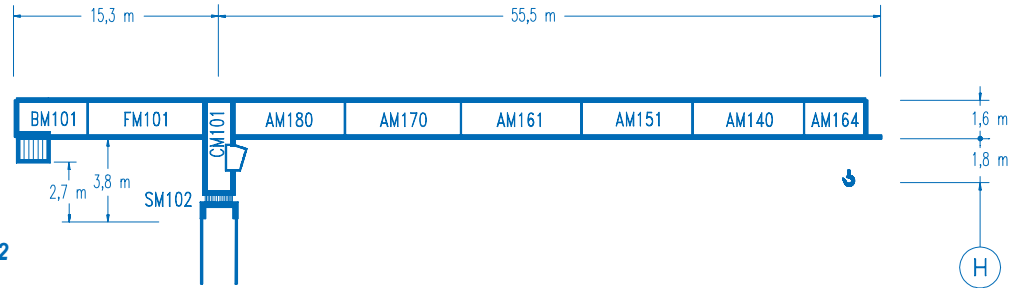


COMANSA

LINDEN 1000

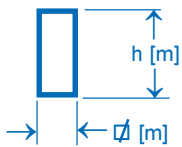
10 LC 110

2,5 m



Configuraciones ver
Configuration see
Configurations voyez
Komponenten siehe

DS.0431.02



n°	Ref.	∅	h	n°	Ref.	∅	h	n°	Ref.	∅	h	n°	Ref.	∅	h
3	S14	1,6	5,5	9	TMS23	2,0	1,0	14	S24	2,0	5,5	20	TD34	2,5	5,5
4	TS14	1,6	5,5	12	S25	2,0	5,5	15	TS24	2,0	5,5	21	D33	2,5	5,5
5	S13	1,6	5,5	13	TS25	2,0	5,5	18	TMS35	2,5	1,0	22	TD33A	2,5	5,5
6	S12	1,6	5,5									23	S35	2,5	5,5

