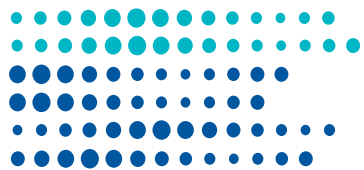


# CONSUMABLES FOR RESEARCH LABORATORIES



**BIOTRACE**

v.02-261224

[www.biotrace.com.ua](http://www.biotrace.com.ua)



## MADE IN UKRAINE

### OUR PRODUCTS

Our product range encompasses the most widely utilized laboratory consumables and is continually expanding to accommodate the evolving needs of modern laboratories. Disposable materials are indispensable for laboratory operations, and we are dedicated to providing not only high-quality and safe products but also cost-effective solutions that enhance operational efficiency.

Our current product offerings include:

- **Polystyrene Petri dishes**
- **Polypropylene Pasteur pipettes**
- **Centrifuge microtubes with caps (Eppendorf-type)**
- **Universal tips (Gilson-type) for manual and automatic pipettes**

We offer both sterile products in individual packaging and non-sterile products in bulk packaging, meeting a diverse array of laboratory requirements. For comprehensive information on product types, features, and specifications, please explore the relevant sections of our website or reach out to our specialists directly via email.

### QUALITY ASSURANCE

Our production and distribution processes are accredited to meet the stringent requirements of DIN EN ISO 13485 and DIN EN ISO 9001 standards. Rigorous oversight at every stage of production ensures the highest levels of quality, safety, and reliability for our products and services.

### PREMIUM RAW MATERIALS

We utilize high-grade primary raw materials to ensure precision, purity, and user-friendliness. Our stringent selection criteria for raw materials guarantee chemical stability, mechanical resilience, and economic efficiency, thereby consistently delivering optimal performance and reliability in our products.

### EFFICIENT LOGISTICS

We employ modern and reliable logistics methodologies to ensure your orders are delivered with unparalleled speed and precision. Our logistics operations are distinguished by their punctuality and efficiency at every stage, guaranteeing seamless and timely delivery to your location.



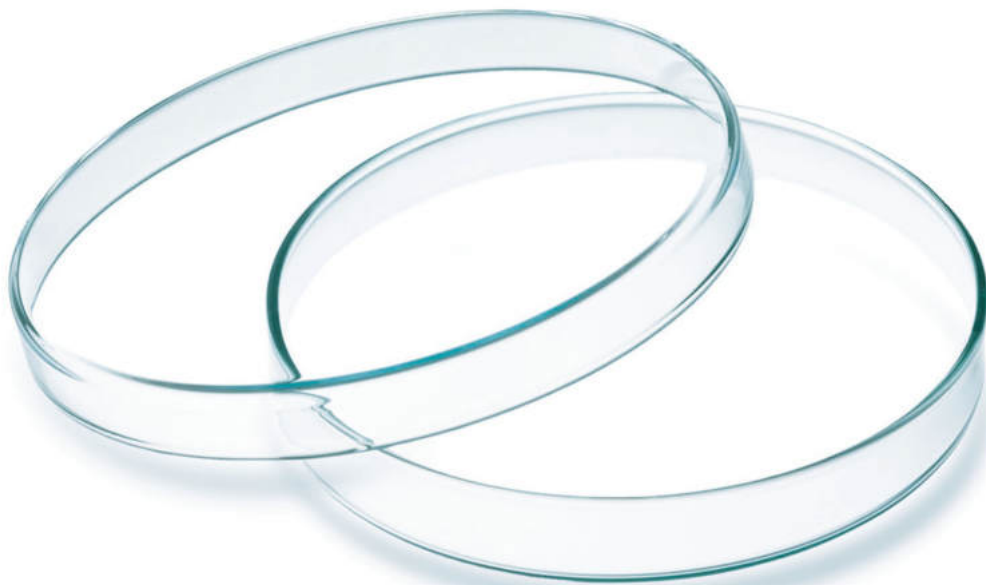
## PETRI DISHES

A staple in microbiology, Petri dishes are essential containers used for the cultivation of microorganisms on agar nutrient media. Crafted from transparent polystyrene, these dishes possess a flat cylindrical shape. Each Petri dish consists of two parts: a base and a larger diameter lid that serves as a cover.

Designed with ventilation holes, Petri dishes facilitate optimal conditions for the cultivation of aerobic microorganisms and cell cultures. Non-ventilated dishes are also available. Their perfectly smooth surface ensures consistency in experimental outcomes, while their resilience against deformation and durability when dropped from a small height make them a reliable choice for laboratory use.

### SPECIFICATIONS:

|                         |                 |                 |
|-------------------------|-----------------|-----------------|
| Number of sections:     | one             | one             |
| Diameter:               | 90 mm           | 90 mm           |
| Height:                 | 14 mm           | 14 mm           |
| Microbiological status: | sterile         | sterile         |
| Coordinate grid:        | no              | no              |
| Ventilation:            | yes             | no              |
| Package:                | sealed, sterile | sealed, sterile |
| Quantity per package:   | 1/5/10/20 pcs.  | 1/5/10/20 pcs.  |



See Order Information for product details



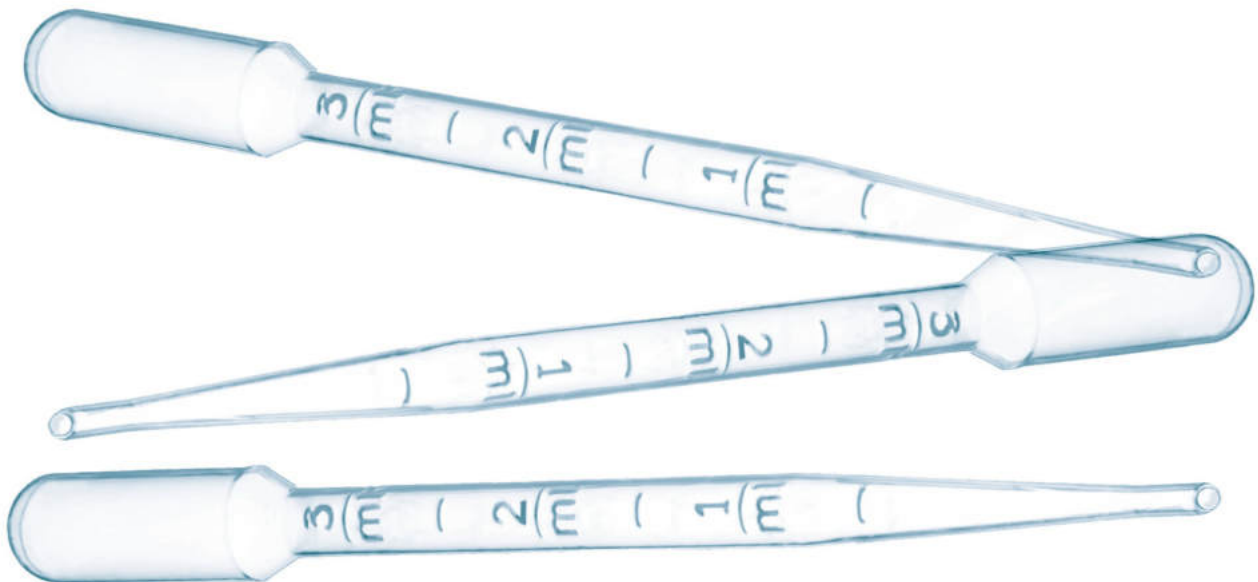
## PASTEUR PIPETTES

A simple yet reliable device for dispensing liquid samples and reagents, Pasteur pipettes are made from flexible, transparent, non-toxic polyethylene. These pipettes feature a graduated capillary design with a bulb at one end, ensuring precise dosing and easy handling. Available in two volumes - 1 milliliter and 3 milliliters - they come in both sterile and non-sterile variants to suit various laboratory needs.

Their ergonomic design allows for comfortable use, making them a staple in any laboratory setting.

### SPECIFICATIONS:

|                         |                     |                     |
|-------------------------|---------------------|---------------------|
| Volume:                 | 1 mL                | 3 mL                |
| Length:                 | 160 mm              | 160 mm              |
| Hole diameter:          | 2.7 mm              | 2.7 mm              |
| Microbiological status: | sterile/non-sterile | sterile/non-sterile |
| Package:                | individual, sealed  | individual, sealed  |
| Quantity per package:   | 500 pcs.            | 500 pcs.            |



See Order Information for product details



## TIPS FOR PIPETTES

These disposable, replaceable tips are designed for use with mechanic dispensers, facilitating the precise pipetting of liquid samples and reagents. Featuring a Gilson-type universal design, they are compatible with most automatic dispensers. Constructed from high-quality polypropylene, these tips offer excellent chemical resistance to acids, alkalis, aldehydes, and aliphatic alcohols.

Available in two volumes - 200 µl (yellow) and 1000 µl (blue) - these tips can be supplied in sterile or non-sterile conditions, and are offered in multiple packaging options, with or without a filter, to suit various laboratory needs. Their ergonomic design ensures ease of use and reliable performance, making them indispensable in clinical, research, and industrial laboratory settings.

### SPECIFICATIONS:

|                         |                       |                     |
|-------------------------|-----------------------|---------------------|
| Volume:                 | 200 µl                | 1000 µl             |
| Type:                   | Gilson                | Gilson              |
| Length:                 | 50 mm                 | 70 mm               |
| Cannula diameter:       | 6.5 mm                | 8.3 mm              |
| Color:                  | yellow                | blue                |
| Filter:                 | yes/no                | yes/no              |
| Microbiological status: | sterile/non-sterile   | sterile/non-sterile |
| Package:                | multiple package      | multiple package    |
| Quantity per package:   | 100/250/500/1000 pcs. | 100/250/500 pcs.    |



See Order Information for product details





## MICROTUBES

This microtube is designed for sampling, transportation, centrifugation, and other laboratory manipulations with samples and reagents in micro volumes. It features a conical shape, an inscription field, graduations, and a locking cover with a bridle (Eppendorf type). Made from high-quality transparent polypropylene, the microtube withstands loads of up to 15,000 revolutions per minute during centrifugation and can endure steam sterilization at 121 °C.

Available in a 1.5 ml volume, the microtubes are offered in both sterile and non-sterile variants. They are certified free of RNA and DNase, ensuring contamination-free handling of sensitive samples. The robust design and high chemical resistance make these microtubes ideal for a wide range of laboratory applications, including molecular biology, biochemistry, and clinical diagnostics.

### SPECIFICATIONS:

|                         |                     |
|-------------------------|---------------------|
| Volume:                 | 1.5 mL              |
| Type:                   | Eppendorf           |
| Length:                 | 40 mm               |
| Cover diameter:         | 12.5 mm             |
| Microbiological status: | sterile/non-sterile |
| Package:                | multiple package    |
| Quantity per package:   | 500 pcs.            |



See Order Information for product details





## COTTON WOOL • BANDAGE • GAUZE

Our hygroscopic materials, including cotton wool, bandages, and gauze, are widely utilized in medical and laboratory settings for their exceptional moisture-absorbing properties. Made from natural cotton fibers, these products are hypoallergenic and offer a high degree of hygroscopicity.

Key features of our products include:

- Uniformity of the gauze weave, ensuring consistent performance
- Density of the bandage twist, providing reliable support
- Consistency of the edge cut, allowing for smooth application
- Reliability and tightness of the packaging, ensuring product integrity

The high-quality combing process ensures our cotton is free from impurities and knots. Additionally, our products are bleached without the use of chlorine, preserving their natural properties and enhancing safety. Available in both sterile and non-sterile sealed packages, our materials meet diverse needs with unwavering quality and safety.

|                         |                           |
|-------------------------|---------------------------|
| Composition:            | 100% cotton               |
| Package:                | individual sealed package |
| Microbiological status: | sterile / non-sterile     |



Cotton wool, roll, 25 g  
 Cotton wool, roll, 25 g, sterile  
 Cotton wool, roll, 50 g  
 Cotton wool, roll, 50 g, sterile  
 Cotton wool, roll, 100 g

Gauze length 0.9 x 1 m  
 Gauze length 0.9 x 2 m  
 Gauze length 0.9 x 3 m  
 Gauze length 0.9 x 5 m  
 Gauze length 0.9 x 10 m

Cotton wool, zig-zag, 50 g

Cotton wool, zig-zag, 100 g

Gauze bandage 5 m x 10 cm

Gauze bandage 7 m x 14 cm

Gauze bandage 5 m x 10 cm, sterile

Gauze bandage 7 m x 14 cm, sterile





## ORDER INFORMATION

### PETRI DISHES

| Code       | Material | ∅, mm | h, mm | Sections | Vent | Grid | Sterile | Package |
|------------|----------|-------|-------|----------|------|------|---------|---------|
| 21019001   | PS       | 90    | 14    | 1        | ●    | -    | ●       | 1       |
| 21019005   | PS       | 90    | 14    | 1        | ●    | -    | ●       | 5       |
| 21019010   | PS       | 90    | 14    | 1        | ●    | -    | ●       | 10      |
| 21019020   | PS       | 90    | 14    | 1        | ●    | -    | ●       | 20      |
| 21019320   | PS       | 90    | 14    | 1        | ●    | -    | ●       | 320     |
| 21019001NV | PS       | 90    | 14    | 1        | -    | -    | ●       | 1       |
| 21019005NV | PS       | 90    | 14    | 1        | -    | -    | ●       | 5       |
| 21019010NV | PS       | 90    | 14    | 1        | -    | -    | ●       | 10      |
| 21019020NV | PS       | 90    | 14    | 1        | -    | -    | ●       | 20      |
| 21019320NV | PS       | 90    | 14    | 1        | -    | -    | ●       | 320     |

### PASTEUR PIPETTES

| Code     | Material | V, ml | Hole ∅ mm | h, mm | Sterile | Ind.pack | Package |
|----------|----------|-------|-----------|-------|---------|----------|---------|
| 21041011 | PE       | 1     | 2.7       | 160   | ●       | ●        | 1       |
| 21041012 | PE       | 1     | 2.7       | 160   | ●       | ●        | 500     |
| 21041003 | PE       | 1     | 2.7       | 160   | -       | -        | 500     |
| 21043011 | PE       | 3     | 2.7       | 160   | ●       | ●        | 1       |
| 21043012 | PE       | 3     | 2.7       | 160   | ●       | ●        | 500     |
| 21043003 | PE       | 3     | 2.7       | 160   | -       | -        | 500     |

### TIPS FOR PIPETTES

| Code     | Material | V <sub>max</sub> , µl | ∅, mm | h, mm | Type   | Color | Filter | Sterile | Package |
|----------|----------|-----------------------|-------|-------|--------|-------|--------|---------|---------|
| 21030502 | PP       | 200                   | 6.5   | 50    | Gilson | ●     | -      | -       | 1000    |
| 21030510 | PP       | 200                   | 6.5   | 50    | Gilson | ●     | ●      | -       | 500     |
| 21030511 | PP       | 200                   | 6.5   | 50    | Gilson | ●     | ●      | -       | 1000    |
| 21030506 | PP       | 200                   | 6.5   | 50    | Gilson | ●     | ●      | ●       | 100     |
| 21030507 | PP       | 200                   | 6.5   | 50    | Gilson | ●     | ●      | ●       | 250     |
| 21030508 | PP       | 200                   | 6.5   | 50    | Gilson | ●     | ●      | ●       | 500     |
| 21030509 | PP       | 200                   | 6.5   | 50    | Gilson | ●     | ●      | ●       | 1000    |
| 21031001 | PP       | 1000                  | 8.3   | 70    | Gilson | ●     | -      | -       | 500     |
| 21031009 | PP       | 1000                  | 8.3   | 70    | Gilson | ●     | ●      | -       | 250     |
| 21031010 | PP       | 1000                  | 8.3   | 70    | Gilson | ●     | ●      | -       | 500     |
| 21031006 | PP       | 1000                  | 8.3   | 70    | Gilson | ●     | ●      | ●       | 100     |
| 21031007 | PP       | 1000                  | 8.3   | 70    | Gilson | ●     | ●      | ●       | 250     |
| 21031008 | PP       | 1000                  | 8.3   | 70    | Gilson | ●     | ●      | ●       | 500     |

### MICROTUBES

| Code     | Material | V, ml | ∅ <sub>cov</sub> , mm | h, mm | Type    | Sterile | PNa-DNA-free | Package |
|----------|----------|-------|-----------------------|-------|---------|---------|--------------|---------|
| 21021501 | PP       | 1.5   | 12.5                  | 40    | Ep...rf | -       | -            | 500     |
| 21021511 | PP       | 1.5   | 12.5                  | 40    | Ep...rf | ●       | ●            | 250     |
| 21021512 | PP       | 1.5   | 12.5                  | 40    | Ep...rf | ●       | ●            | 500     |





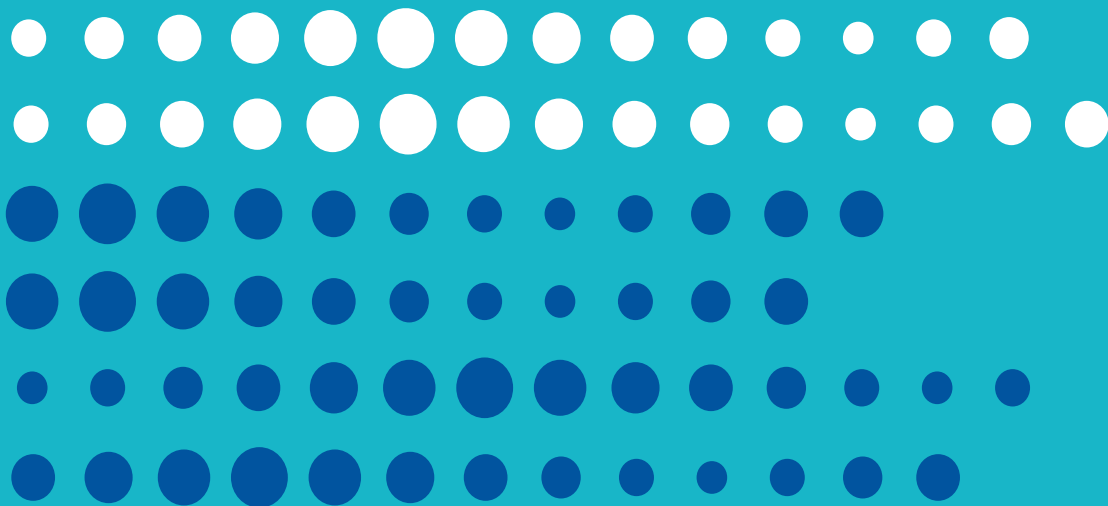


## STATE-OF-THE-ART MANUFACTURING



Our manufacturing facilities are equipped with advanced fifth-generation high-pressure automated production lines, housed within certified clean rooms. For sterilization, we utilize cutting-edge irradiation technology with a pulsed electron accelerator, applied after products are sealed in their individual packaging. This process ensures the highest level of sterility and safety.





**ТОВ БІОТРЕЙС-ГРУП**

вул. Автопаркова, 7  
Дніпро, Україна, 49127  
Тел.: 0 800 401 700  
0800401700@ukr.net  
[www.biotrace.com.ua](http://www.biotrace.com.ua)

