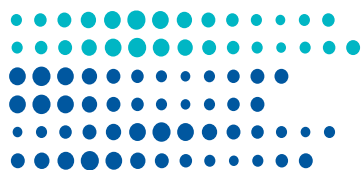




# CONSUMABLES

## FOR RESEARCH LABORATORIES



BIOTRACE

v.03-060225

[www.biotrace.com.ua](http://www.biotrace.com.ua)



## MADE IN UKRAINE

### OUR PRODUCTS

Our product range encompasses the most widely utilized laboratory consumables and is continually expanding to accommodate the evolving needs of modern laboratories. Disposable materials are indispensable for laboratory operations, and we are dedicated to providing not only high-quality and safe products but also cost-effective solutions that enhance operational efficiency.

Our current product offerings include:

- **Polystyrene Petri dishes**
- **Polypropylene Pasteur pipettes**
- **Centrifuge microtubes with caps (Eppendorf-type)**
- **Universal tips (Gilson-type) for manual and automatic pipettes**

We offer both sterile products in individual packaging and non-sterile products in bulk packaging, meeting a diverse array of laboratory requirements. For comprehensive information on product types, features, and specifications, please explore the relevant sections of our website or reach out to our specialists directly via email.

### QUALITY ASSURANCE

Our production and distribution processes are accredited to meet the stringent requirements of DIN EN ISO 13485 and DIN EN ISO 9001 standards. Rigorous oversight at every stage of production ensures the highest levels of quality, safety, and reliability for our products and services.

### PREMIUM RAW MATERIALS

We utilize high-grade primary raw materials to ensure precision, purity, and user-friendliness. Our stringent selection criteria for raw materials guarantee chemical stability, mechanical resilience, and economic efficiency, thereby consistently delivering optimal performance and reliability in our products.

### EFFICIENT LOGISTICS

We employ modern and reliable logistics methodologies to ensure your orders are delivered with unparalleled speed and precision. Our logistics operations are distinguished by their punctuality and efficiency at every stage, guaranteeing seamless and timely delivery to your location.



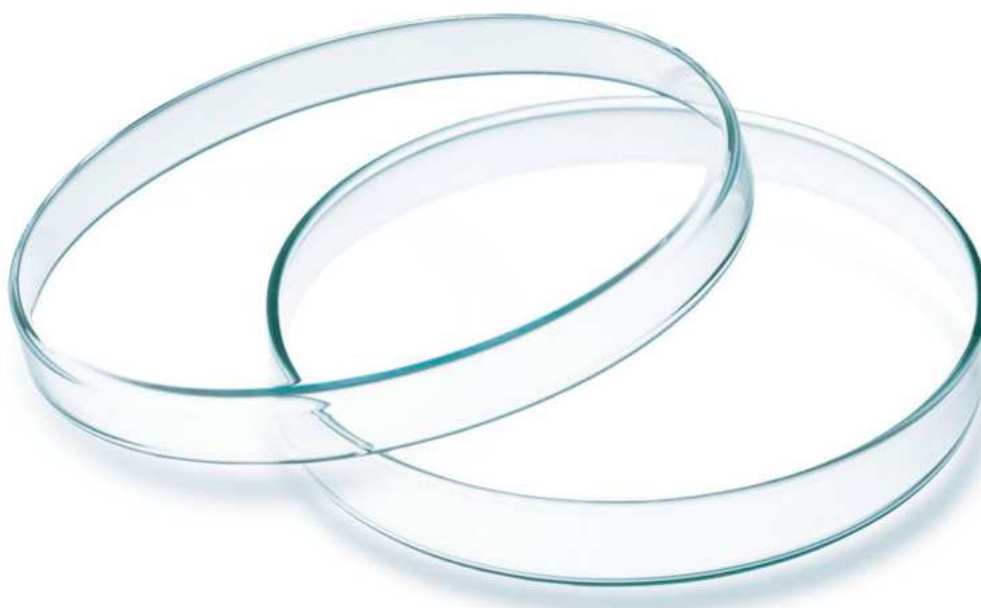
## PETRI DISHES

A staple in microbiology, Petri dishes are essential containers used for the cultivation of microorganisms on agar nutrient media. Crafted from transparent polystyrene, these dishes possess a flat cylindrical shape. Each Petri dish consists of two parts: a base and a larger diameter lid that serves as a cover.

Designed with ventilation holes, Petri dishes facilitate optimal conditions for the cultivation of aerobic microorganisms and cell cultures. Non-ventilated dishes are also available. Their perfectly smooth surface ensures consistency in experimental outcomes, while their resilience against deformation and durability when dropped from a small height make them a reliable choice for laboratory use.

### SPECIFICATIONS:

Number of sections:	one	two
Diameter:	90 mm	90 mm
Height:	14 mm	14 mm
Microbiological status:	sterile	sterile
Coordinate grid:	no	no
Ventilation:	yes	yes/no
Package:	sealed, sterile	sealed, sterile
Quantity per package:	1/5/10/20 pcs.	1/5/10/20 pcs.



See Order Information for product details

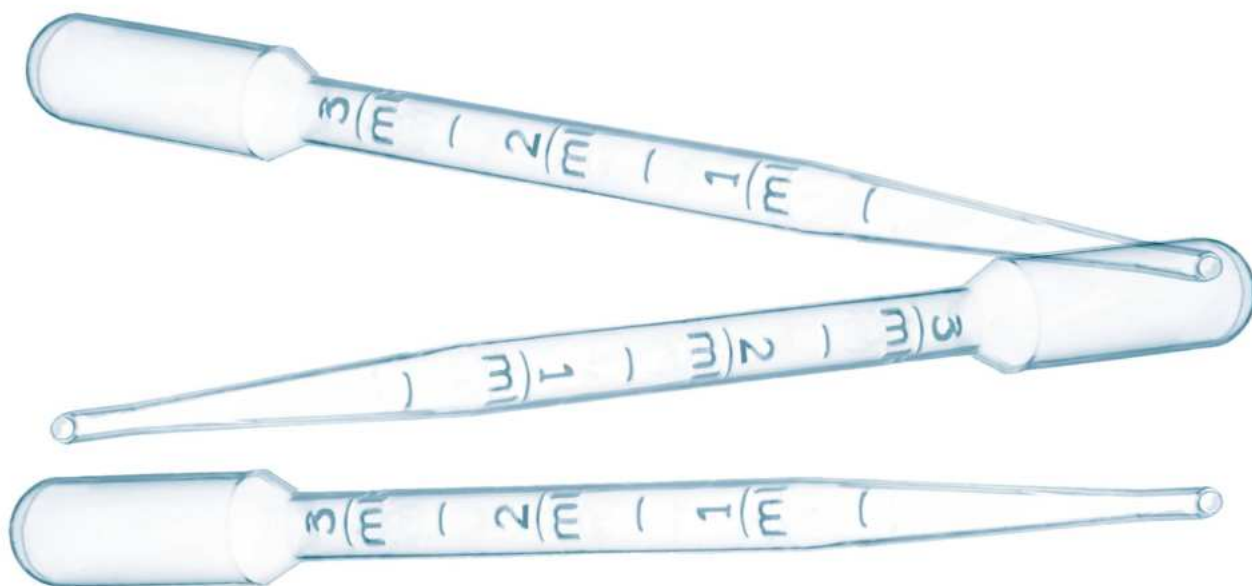
## PASTEUR PIPETTES

A simple yet reliable device for dispensing liquid samples and reagents, Pasteur pipettes are made from flexible, transparent, non-toxic polyethylene. These pipettes feature a graduated capillary design with a bulb at one end, ensuring precise dosing and easy handling. Available in two volumes - 1 milliliter and 3 milliliters - they come in both sterile and non-sterile variants to suit various laboratory needs.

Their ergonomic design allows for comfortable use, making them a staple in any laboratory setting.

### SPECIFICATIONS:

Volume:	1 mL	3 mL
Length:	160 mm	160 mm
Hole diameter:	2.7 mm	2.7 mm
Microbiological status:	sterile/non-sterile	sterile/non-sterile
Package:	individual, sealed	individual, sealed
Quantity per package:	500 pcs.	500 pcs.



See Order Information for product details



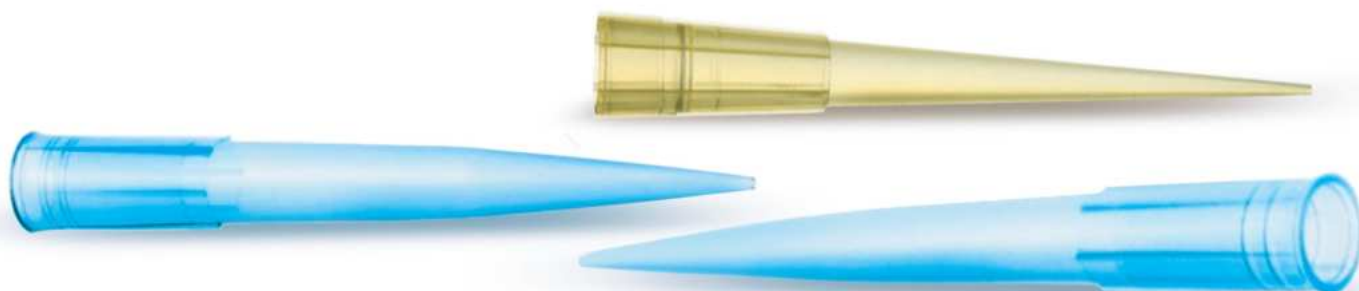
## TIPS FOR PIPETTES

These disposable, replaceable tips are designed for use with mechanic dispensers, facilitating the precise pipetting of liquid samples and reagents. Featuring a Gilson-type universal design, they are compatible with most automatic dispensers. Constructed from high-quality polypropylene, these tips offer excellent chemical resistance to acids, alkalis, aldehydes, and aliphatic alcohols.

Available in two volumes - 200 µl (yellow) and 1000 µl (blue) - these tips can be supplied in sterile or non-sterile conditions, and are offered in multiple packaging options, with or without a filter, to suit various laboratory needs. Their ergonomic design ensures ease of use and reliable performance, making them indispensable in clinical, research, and industrial laboratory settings.

### SPECIFICATIONS:

Volume:	200 µl	1000 µl
Type:	Gilson	Gilson
Length:	50 mm	70 mm
Cannula diameter:	6.5 mm	8.3 mm
Color:	yellow	blue
Filter:	yes/no	yes/no
Microbiological status:	sterile/non-sterile	sterile/non-sterile
Package:	multiple package	multiple package
Quantity per package:	100/250/500/1000 pcs.	100/250/500 pcs.



See Order Information for product details



## MICROTUBES

This microtube is designed for sampling, transportation, centrifugation, and other laboratory manipulations with samples and reagents in micro volumes. It features a conical shape, an inscription field, graduations, and a locking cover with a bridle (Eppendorf type). Made from high-quality transparent polypropylene, the microtube withstands loads of up to 15,000 revolutions per minute during centrifugation and can endure steam sterilization at 121 °C.

Available in a 1.5 ml volume, the microtubes are offered in both sterile and non-sterile variants. They are certified free of RNA and DNase, ensuring contamination-free handling of sensitive samples. The robust design and high chemical resistance make these microtubes ideal for a wide range of laboratory applications, including molecular biology, biochemistry, and clinical diagnostics.

### SPECIFICATIONS:

Volume:	1.5 mL
Type:	Eppendorf
Length:	40 mm
Cover diameter:	12.5 mm
Microbiological status:	sterile/non-sterile
Package:	multiple package
Quantity per package:	500 pcs.



See Order Information for product details



## TUBES

This is the most commonly used container in laboratory practice, utilized in medical, scientific, and industrial laboratories for the collection, transportation, and mixing of biological samples and chemical reagents. The tube is a cylindrical container made of high-quality polyethylene terephthalate (PET), featuring a round bottom on one end and a cross-sectional opening on the other.

The superior material from which the tubes are manufactured imparts several beneficial properties, such as resistance to acidic and alkaline substances, and resilience against deformation and breakage when dropped from a small height. Additionally, the tube has smooth and transparent walls, ensuring clear visibility and reliable performance.

### SPECIFICATIONS:

Material:	polyethylene terephthalate
Volumemax, ml:	5
Diameter, mm:	13
Length, mm:	75
Wall thickness, mm:	1
Bottom:	U-shaped
Graduation:	no
Microbiological status:	non-sterile
Package:	100 / 250 / 500 / 1000 pcs



See Order Information for product details

## COTTON WOOL • BANDAGE • GAUZE

Our hygroscopic materials, including cotton wool, bandages, and gauze, are widely utilized in medical and laboratory settings for their exceptional moisture-absorbing properties. Made from natural cotton fibers, these products are hypoallergenic and offer a high degree of hygroscopicity.

Key features of our products include:

- Uniformity of the gauze weave, ensuring consistent performance
- Density of the bandage twist, providing reliable support
- Consistency of the edge cut, allowing for smooth application
- Reliability and tightness of the packaging, ensuring product integrity

The high-quality combing process ensures our cotton is free from impurities and knots. Additionally, our products are bleached without the use of chlorine, preserving their natural properties and enhancing safety. Available in both sterile and non-sterile sealed packages, our materials meet diverse needs with unwavering quality and safety.

Composition:	100% cotton
Package:	individual sealed package
Microbiological status:	sterile / non-sterile



Cotton wool, roll, 25 g  
 Cotton wool, roll, 25 g, sterile  
 Cotton wool, roll, 50 g  
 Cotton wool, roll, 50 g, sterile  
 Cotton wool, roll, 100 g

Cotton wool, zig-zag, 50 g

Gauze bandage 5 m x 10 cm  
 Gauze bandage 5 m x 10 cm, sterile

Gauze length 0.9 x 1 m  
 Gauze length 0.9 x 2 m  
 Gauze length 0.9 x 3 m  
 Gauze length 0.9 x 5 m  
 Gauze length 0.9 x 10 m

Cotton wool, zig-zag, 100 g

Gauze bandage 7 m x 14 cm  
 Gauze bandage 7 m x 14 cm, sterile





## ORDER INFORMATION

### PETRI DISHES

Code	Material	ø, mm	h, mm	Sections	Vent	Grid	Sterile	Package
21019001	PS	90	14	1	•	–	•	1
21019005	PS	90	14	1	•	–	•	5
21019010	PS	90	14	1	•	–	•	10
21019020	PS	90	14	1	•	–	•	20
21019320	PS	90	14	1	•	–	•	320
21019001NV	PS	90	14	1	–	–	•	1
21019005NV	PS	90	14	1	–	–	•	5
21019010NV	PS	90	14	1	–	–	•	10
21019020NV	PS	90	14	1	–	–	•	20
21019320NV	PS	90	14	1	–	–	•	320
210190012	PS	90	14	2	•	–	•	1
210190052	PS	90	14	2	•	–	•	5
210190102	PS	90	14	2	•	–	•	10
210190202	PS	90	14	2	•	–	•	20
210193202	PS	90	14	2	•	–	•	320
210190012NV	PS	90	14	2	–	–	•	1
210190052NV	PS	90	14	2	–	–	•	5
210190102NV	PS	90	14	2	–	–	•	10
210190202NV	PS	90	14	2	–	–	•	20
210193202NV	PS	90	14	2	–	–	•	320

### PASTEUR PIPETTES

Code	Material	V, ml	Hole ø, mm	h, mm	Sterile	Ind.pack	Package
21041011	PE	1	2.7	160	•	•	1
21041012	PE	1	2.7	160	•	•	500
21041003	PE	1	2.7	160	–	–	500
21043011	PE	3	2.7	160	•	•	1
21043012	PE	3	2.7	160	•	•	500
21043003	PE	3	2.7	160	–	–	500

## ORDER INFORMATION

### TIPS FOR PIPETTES

Code	Material	V <sub>max</sub> , µl	ø, mm	h, mm	Type	Color	Filter	Sterile	Package
21030502	PP	200	6.5	50	Gilson	●	–	–	1000
21030510	PP	200	6.5	50	Gilson	●	●	–	500
21030511	PP	200	6.5	50	Gilson	●	●	–	1000
21030506	PP	200	6.5	50	Gilson	●	●	●	100
21030507	PP	200	6.5	50	Gilson	●	●	●	250
21030508	PP	200	6.5	50	Gilson	●	●	●	500
21030509	PP	200	6.5	50	Gilson	●	●	●	1000
21031001	PP	1000	8.3	70	Gilson	●	–	–	500
21031009	PP	1000	8.3	70	Gilson	●	●	–	250
21031010	PP	1000	8.3	70	Gilson	●	●	–	500
21031006	PP	1000	8.3	70	Gilson	●	●	●	100
21031007	PP	1000	8.3	70	Gilson	●	●	●	250
21031008	PP	1000	8.3	70	Gilson	●	●	●	500

### MICROTUBES

Code	Material	V, ml	ø <sub>cov</sub> , mm	h, mm	Type	Sterile	PNa-DNa-free	Package
21021501	PP	1.5	12.5	40	Ep...rf	–	–	500
21021511	PP	1.5	12.5	40	Ep...rf	●	●	250
21021512	PP	1.5	12.5	40	Ep...rf	●	●	500

### TUBES

Code	Material	V <sub>max</sub> , ml	ø <sub>out</sub> , mm	h, mm	Th <sub>wall</sub> , mm	Grad	Sterile	Package
24011301	PET	5	13	75	1	–	–	100
24011302	PET	5	13	75	1	–	–	250
24011303	PET	5	13	75	1	–	–	500
24011304	PET	5	13	75	1	–	–	1000

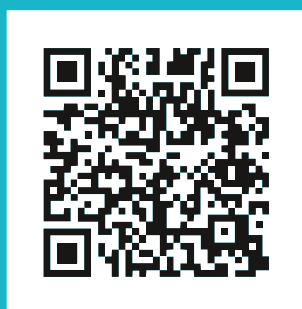
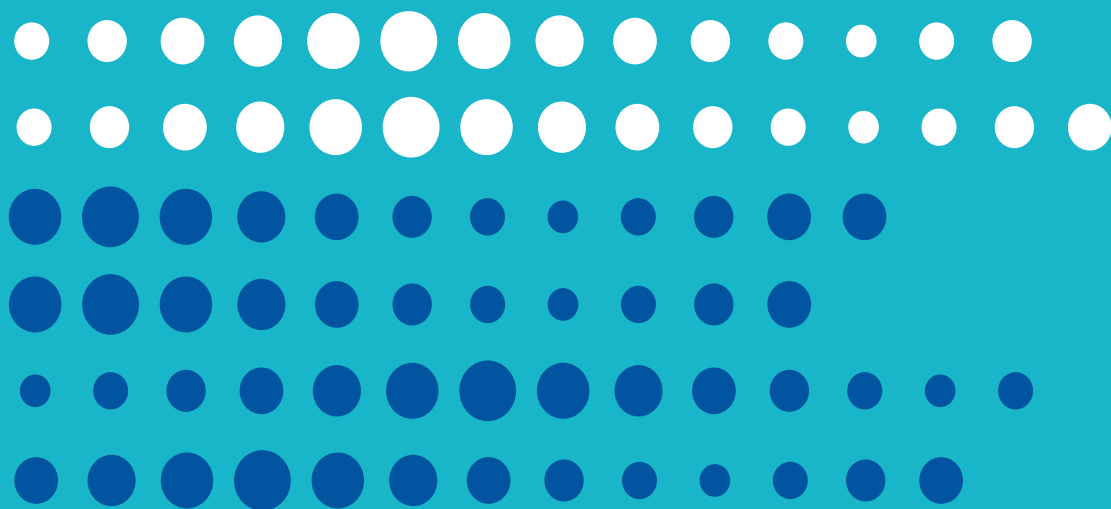


## STATE-OF-THE-ART MANUFACTURING



Our manufacturing facilities are equipped with advanced fifth-generation high-pressure automated production lines, housed within certified clean rooms. For sterilization, we utilize cutting-edge irradiation technology with a pulsed electron accelerator, applied after products are sealed in their individual packaging. This process ensures the highest level of sterility and safety.





**BIOTRACE-GROUP LLC**

7, Avtoparkova str  
Dnipro, Ukraine, 49127  
Tel.: 0 800 401 700  
[office@biotrace.com.ua](mailto:office@biotrace.com.ua)  
[www.biotrace.com.ua](http://www.biotrace.com.ua)

