

Source: Portland Green Streets

VILLAGE OF GARDEN CITY

SATELLITE STUDY AND TRAFFIC CALMING MASTER PLAN

KICK OFF MEETING
September 28, 2022

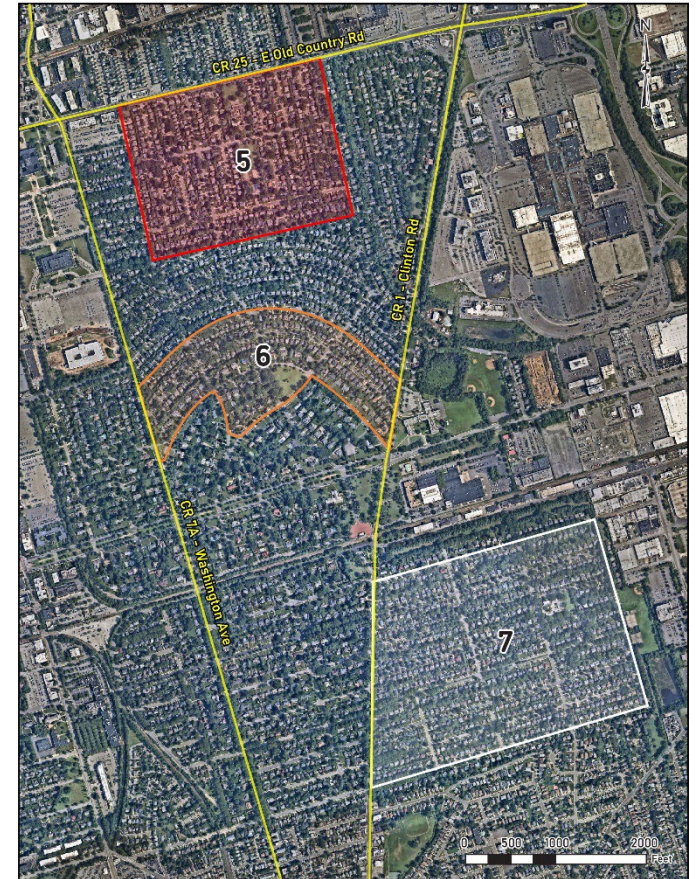
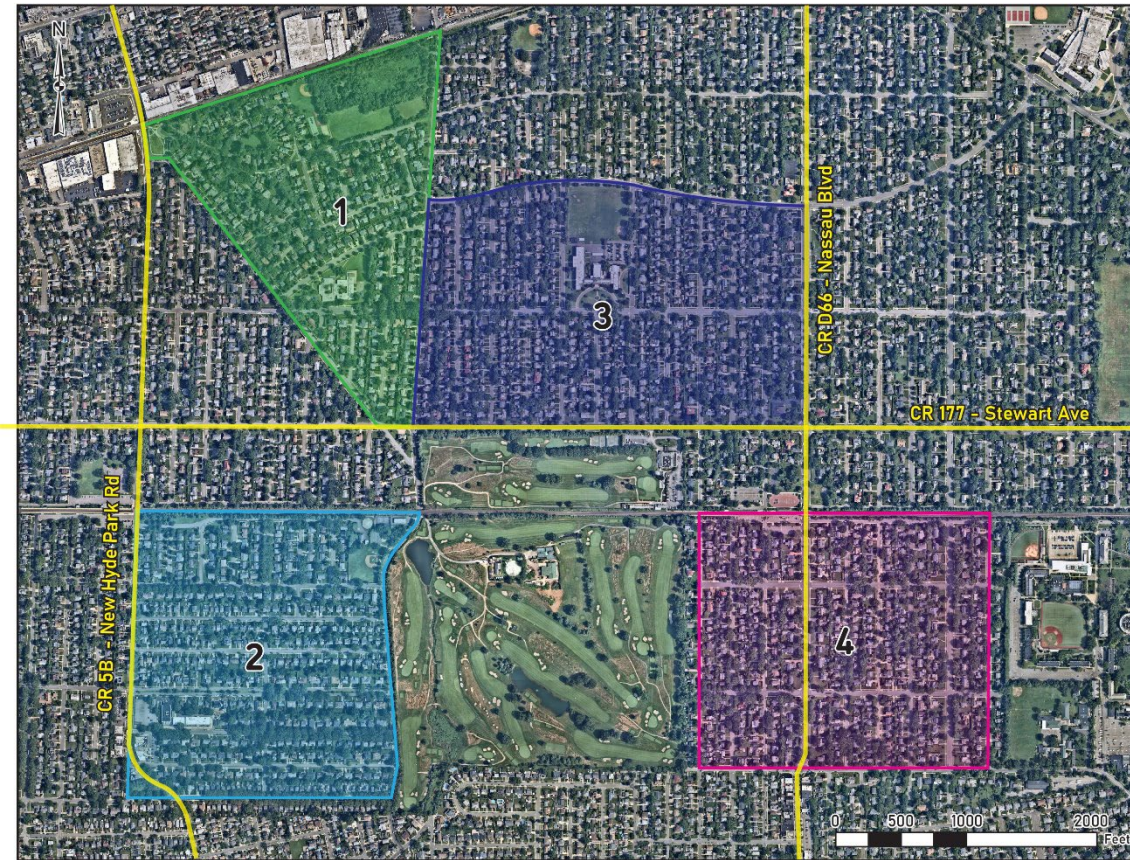
AGENDA

- Welcome and Introduction
- Study Overview
- Study Areas
- Ways to Get Involved
- Q & A on Study
- Update from Village on other Traffic Issues

STUDY OVERVIEW

- Village-wide plan using typical **study areas**
- Understand **existing conditions**
- Get **community input** (CACs and Survey 123)
- Identify **treatments**; determine **suitability**
- Develop **concepts** for select locations
- **Summarize findings** and **recommendations**
- **Report** and **present** to Village
- Submit **Traffic Calming Master Plan**

STUDY AREAS



STUDY AREAS

- Developed in consultation with Village Staff
- Were selected as representative types of streets in Garden City; “typical” streets
- Feedback is welcome on all streets within the Village
- Site specific sketches will be developed for streets in Study Areas
- Final Master Plan to include treatments and policy recommendations for all *types* of streets

OBSERVATIONS



TRAFFIC DATA AND ROADWAY FEATURES

	NYS DOT	Nassau County	Village of Garden City	Creighton Manning	Replica
Volumes	X		X	X	X
Speeds	X		X	X	
Crashes	X	X	X		

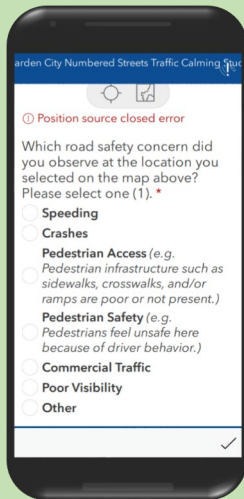
Collect data on roadway features, such as:

- Roadway widths
- Sidewalks
- Curbing
- Painted crosswalks

SURVEY123

What is Survey123?

Custom map-based survey tool used to collect public feedback on site-specific traffic safety issues



Use your phone's camera to scan the QR code below.



or go to:
tinyurl.com/garden-city-survey

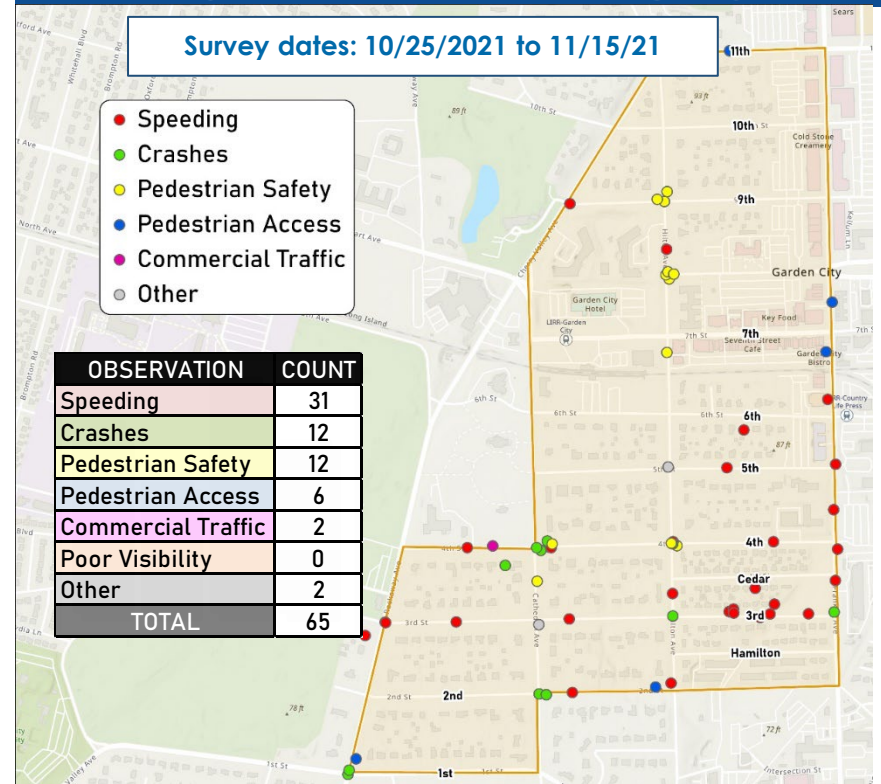
Link is Live now
Survey will Close 11/2

Garden City Numbered Streets Traffic Calming Study

Survey dates: 10/25/2021 to 11/15/21

- Speeding
- Crashes
- Pedestrian Safety
- Pedestrian Access
- Commercial Traffic
- Other

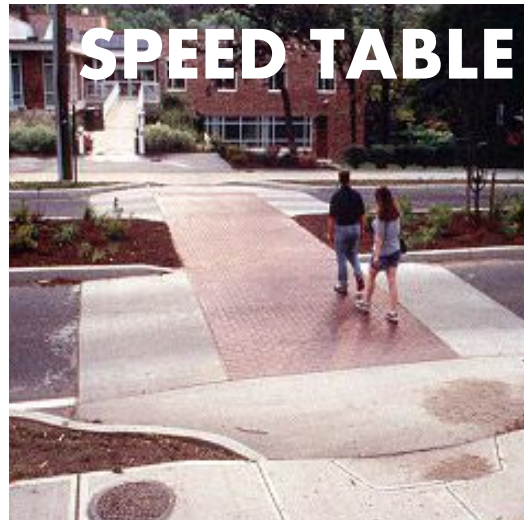
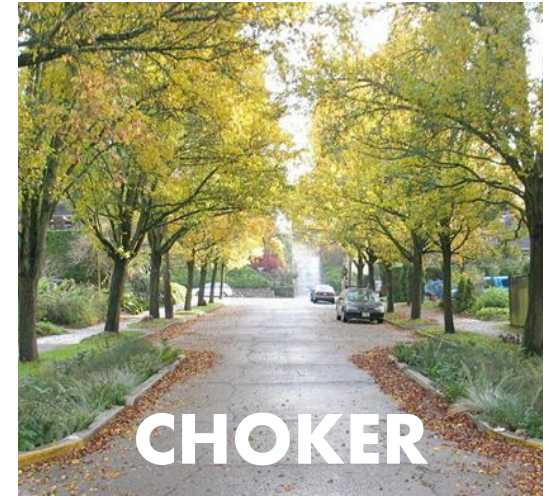
OBSERVATION	COUNT
Speeding	31
Crashes	12
Pedestrian Safety	12
Pedestrian Access	6
Commercial Traffic	2
Poor Visibility	0
Other	2
TOTAL	65



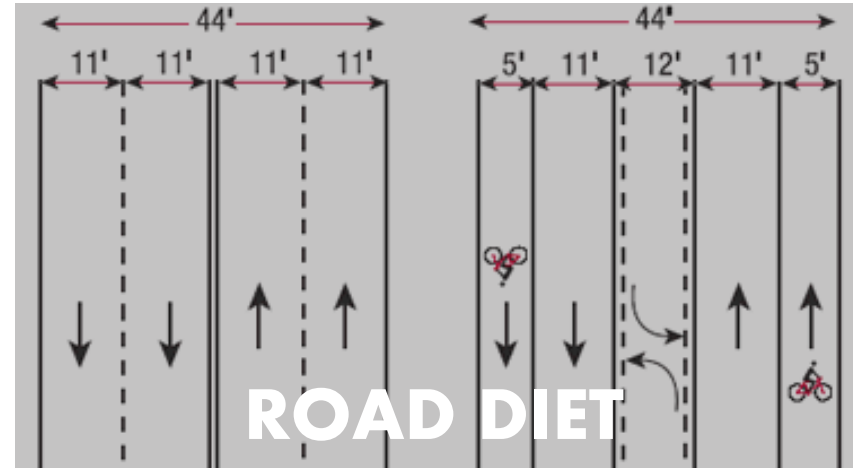
COMMUNITY ADVISORY COMMITTEE (CAC)

- Used in the Numbered Streets;
- Small groups (15-20) for each section
- Sign-up at September 2022 Kick Off
(Contact Traffic Commission Members)
- Raise awareness of the Study / Survey 123
- CAC Listening Session December 2022
 - Shared concerns and ideas
 - Asked to promote Survey 123
- CAC Concept Review February 2023
 - Reviewed the possible treatments
 - Provided comments on the sketch designs

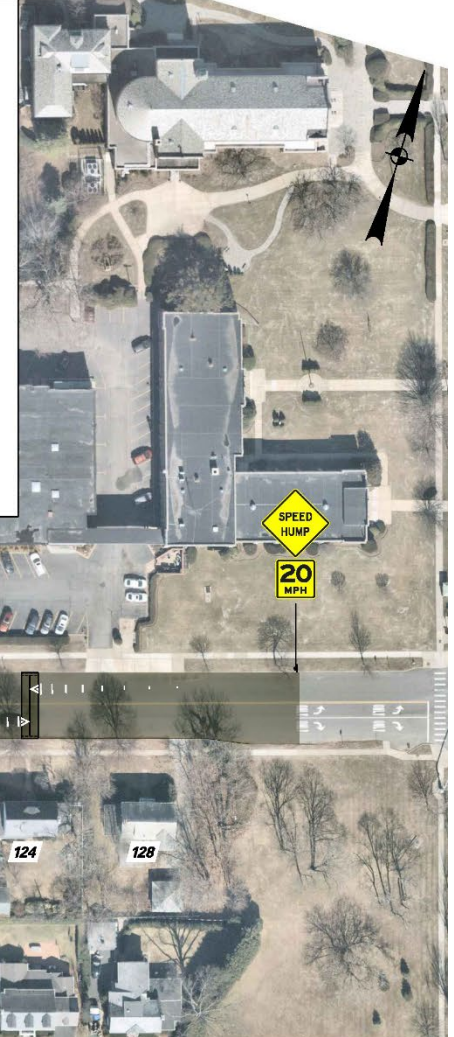
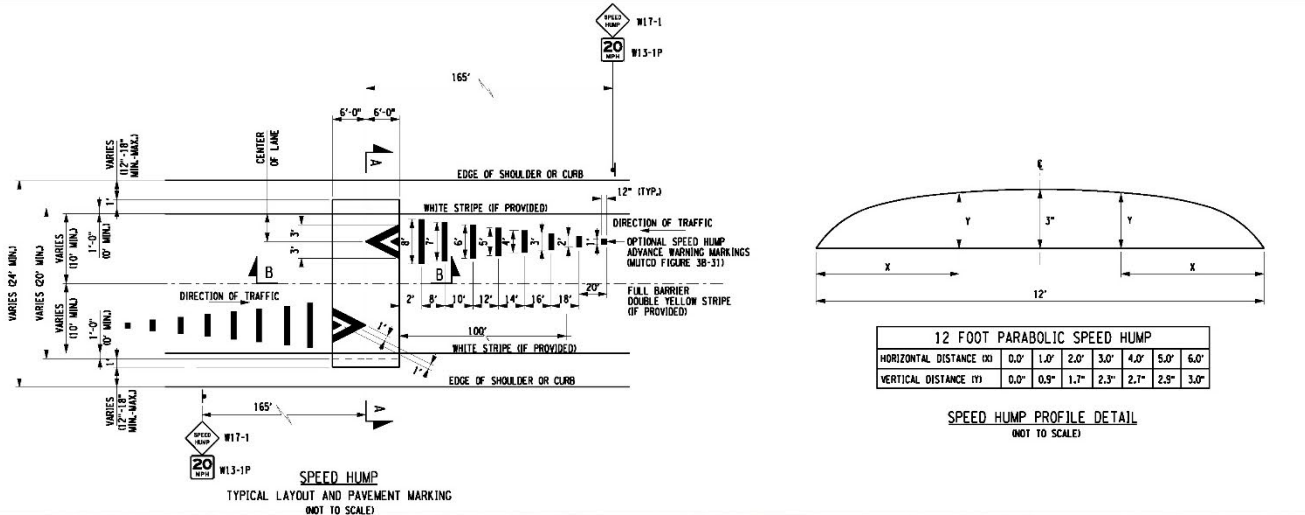
POSSIBLE TREATMENTS...



POSSIBLE TREATMENTS...

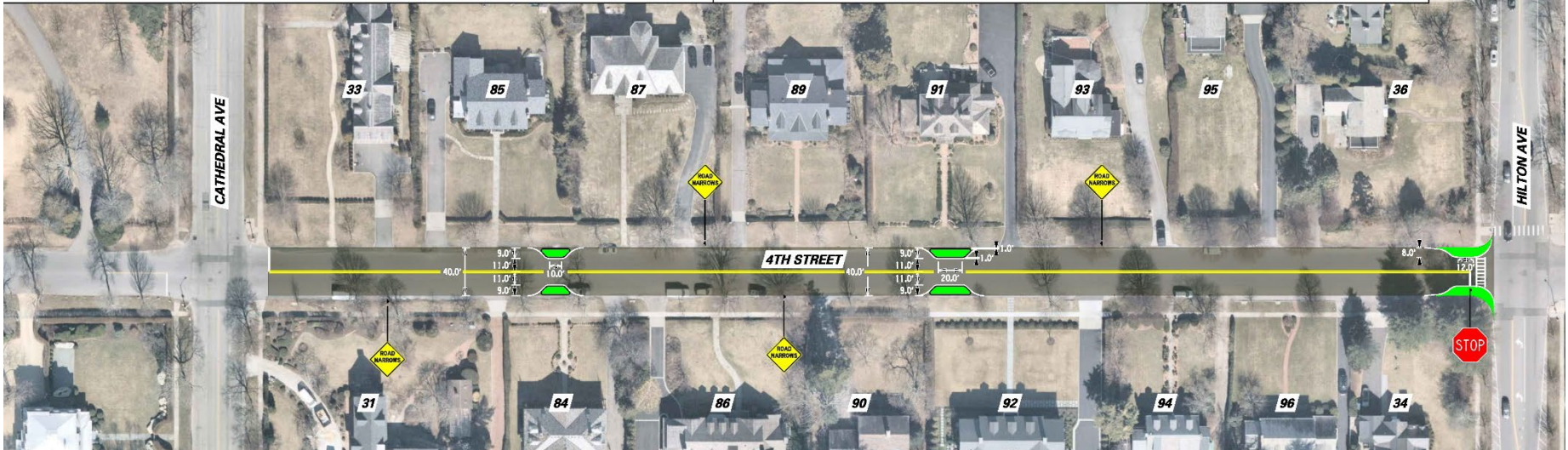
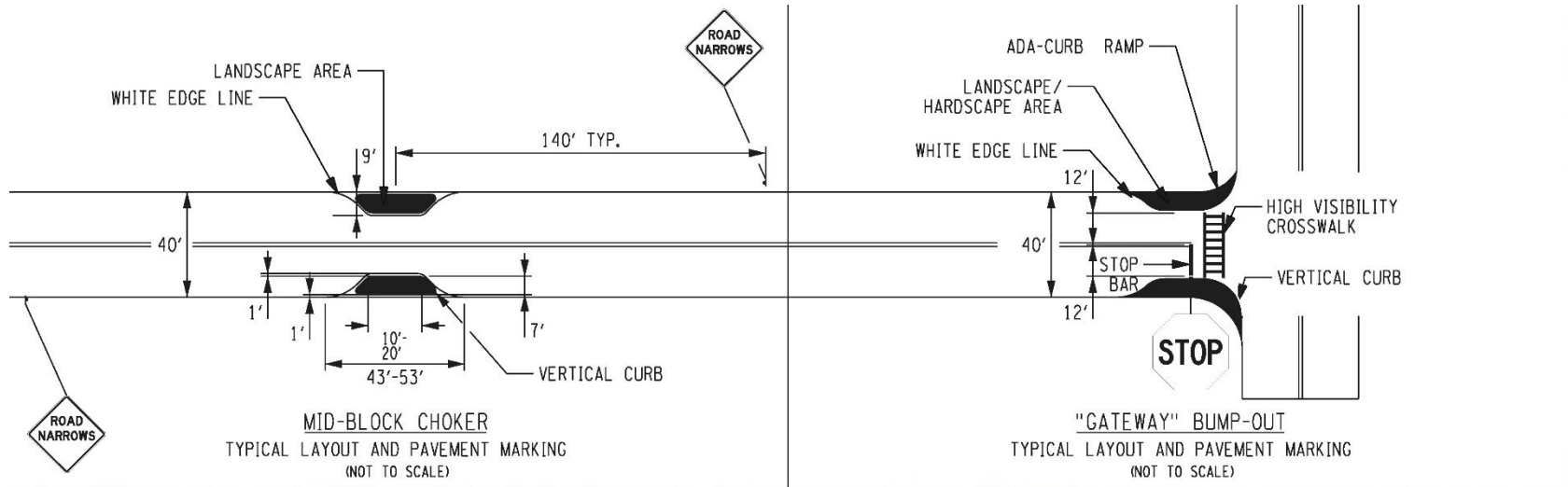


SPEED HUMPS SKETCH



DRAFT - For discussion purposes only

CHOKER SKETCHES



DRAFT - For discussion purposes only

TRAFFIC CALMING MASTER PLAN

- Typology of Village streets
- Possible treatments with typical designs/costs
- Recommend suitability criteria for treatments
- Map of suitability analysis
- Recommend other policies and programs

Q & A ON THE STUDY



Incorporated Village of
Garden City, NY

Home Documents Community Engagement

Traffic Calming Master Plan

Kick-Off Meeting

7:30 PM
Wednesday, Sep. 28
Garden City Senior Center
6 Golf Club Ln, Garden City, NY

Join us to learn about the new study and find out how you can contribute to the process of calming traffic and improving pedestrian safety throughout the Village.

This meeting will also be streamed live via Zoom. Please email Village Clerk Karen Altman at kaltman@gardencityny.net before 4:00 PM on Wednesday, September 28, 2022 to receive the link.



<https://gardencitytrafficcalming.com/>

Garden City - Traffic Calming Survey

The Village of Garden City is currently conducting a transportation study, focused on reducing speeding and dangerous driving. The goal of the study is to create a Traffic Calming Master Plan for the Village of Garden City. This plan will provide the Village recommendations for policies and projects intended to calm traffic and improve pedestrian safety. To help inform the work, we are asking the community for feedback on key safety issues at specific locations of concern.

Please use the Survey 123 questionnaire below to leave your site-specific feedback. "Drop a pin" on an intersection or street segment and indicate the most important concern you have about that location. The seven studies areas are outlined on the map. Those areas were selected and defined by the Village because they contain streets that are typical of other conditions around the village. Some additional notes on the Survey 123:

- You are welcome to drop a pin anywhere in the village, but detailed analysis and design recommendations will be focused on streets in the study areas.
- You can only submit comments on one location per entry, but you are welcome to visit the survey as many times as you like to provide feedback on multiple locations.
- You can also provide your contact information if you would like to receive updates about the study.
- All responses will be summarized and included in the final report.
- A red * indicates that a question is required.

Traffic and Pedestrian Safety Information

1. Areas with traffic/pedestrian safety issues:*

Zoom into an area or location where you've observed traffic or pedestrian safety issues (mobile users: use your fingers to zoom). Then, tap a location to add a point to the map.

The neighborhoods included in the study area are displayed as colored outlined boxes.





<http://www.tinyurl.com/garden-city-survey>

UPDATE FROM VILLAGE

- Meeting with Nassau County
- Study of Clinton Road
- Cathedral Avenue Road Diet
- Initial determination from external counsel

THANK YOU

Contact Info

Creighton Manning Engineering, LLP

Michael Amabile, AICP – Project Manager



mamabile@cmellp.com



www.cmellp.com



(914) 800-9207 (office)

