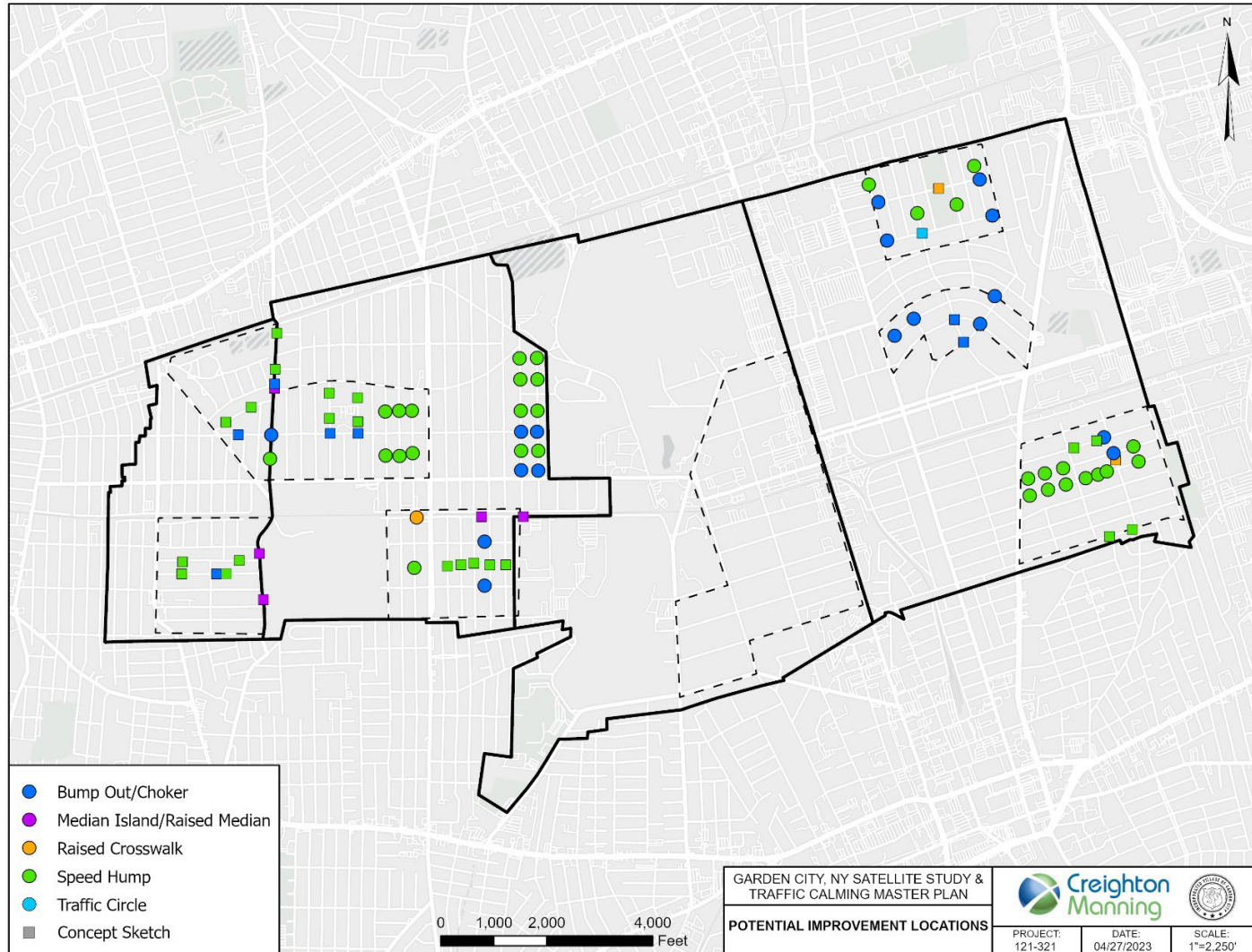
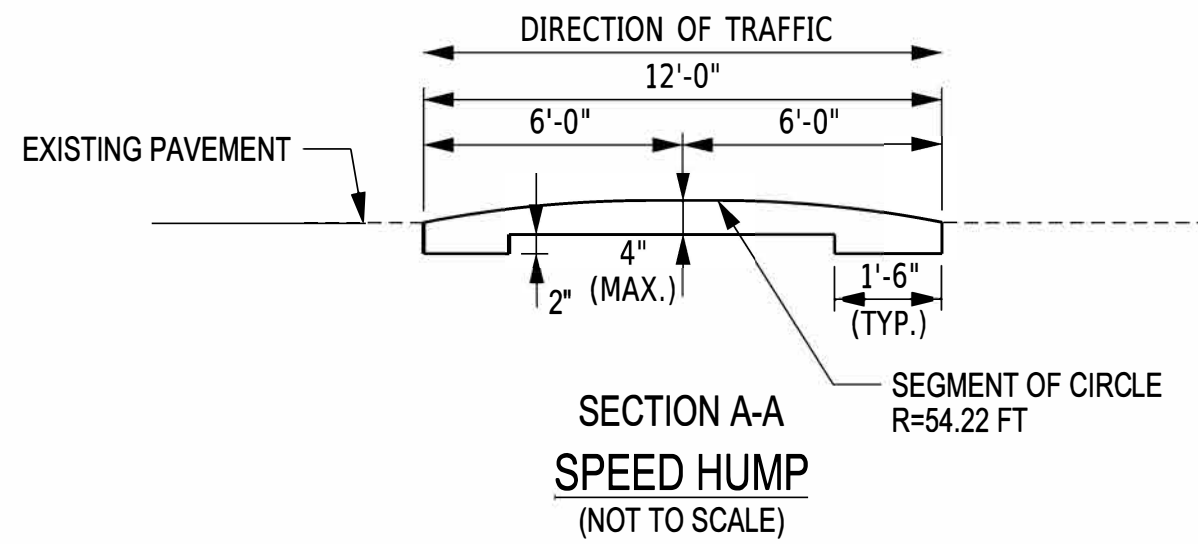


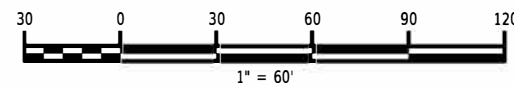
Appendix VIII – Concept Sketches

POTENTIAL IMPROVEMENT LOCATIONS





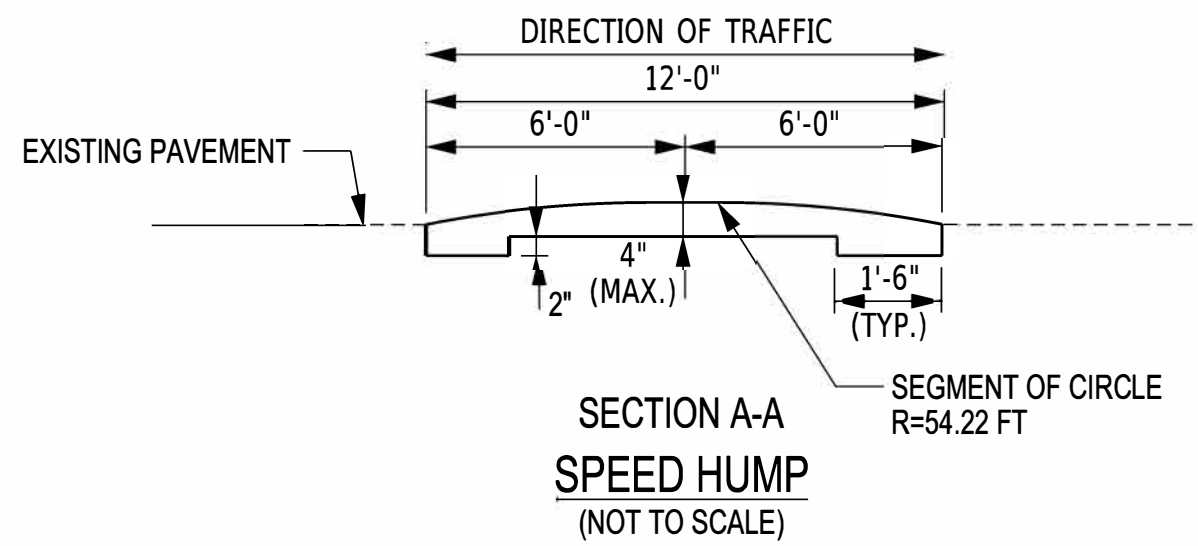
DRAFT - For discussion purposes only



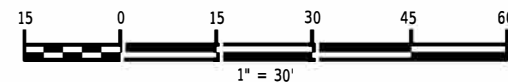


<- Tremont St

Boylston St ->



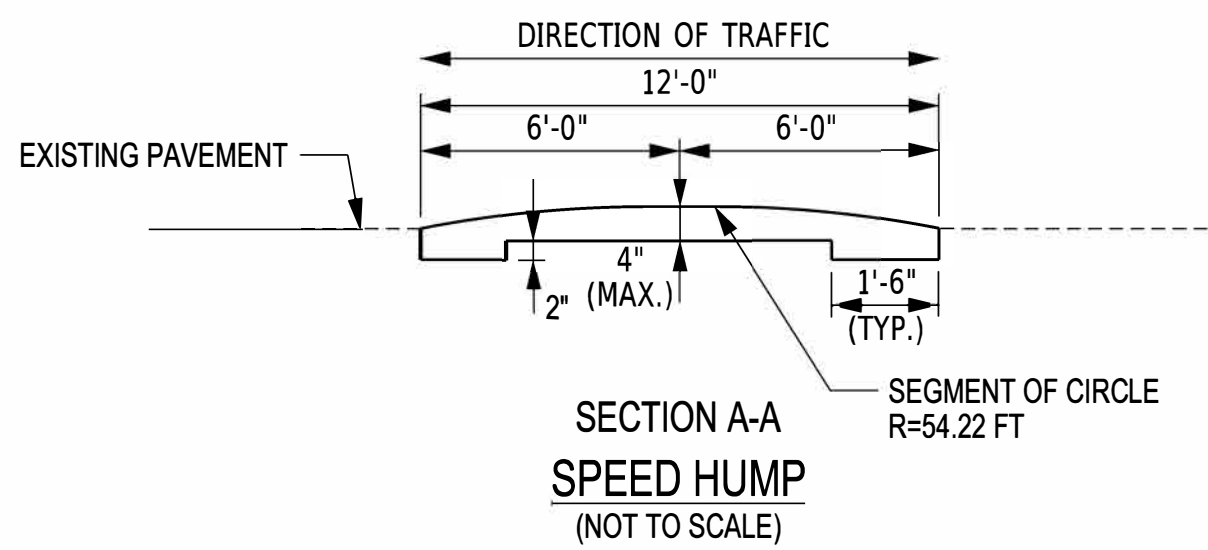
DRAFT - For discussion purposes only



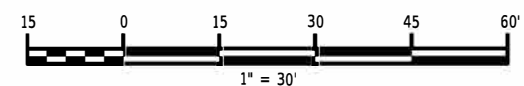


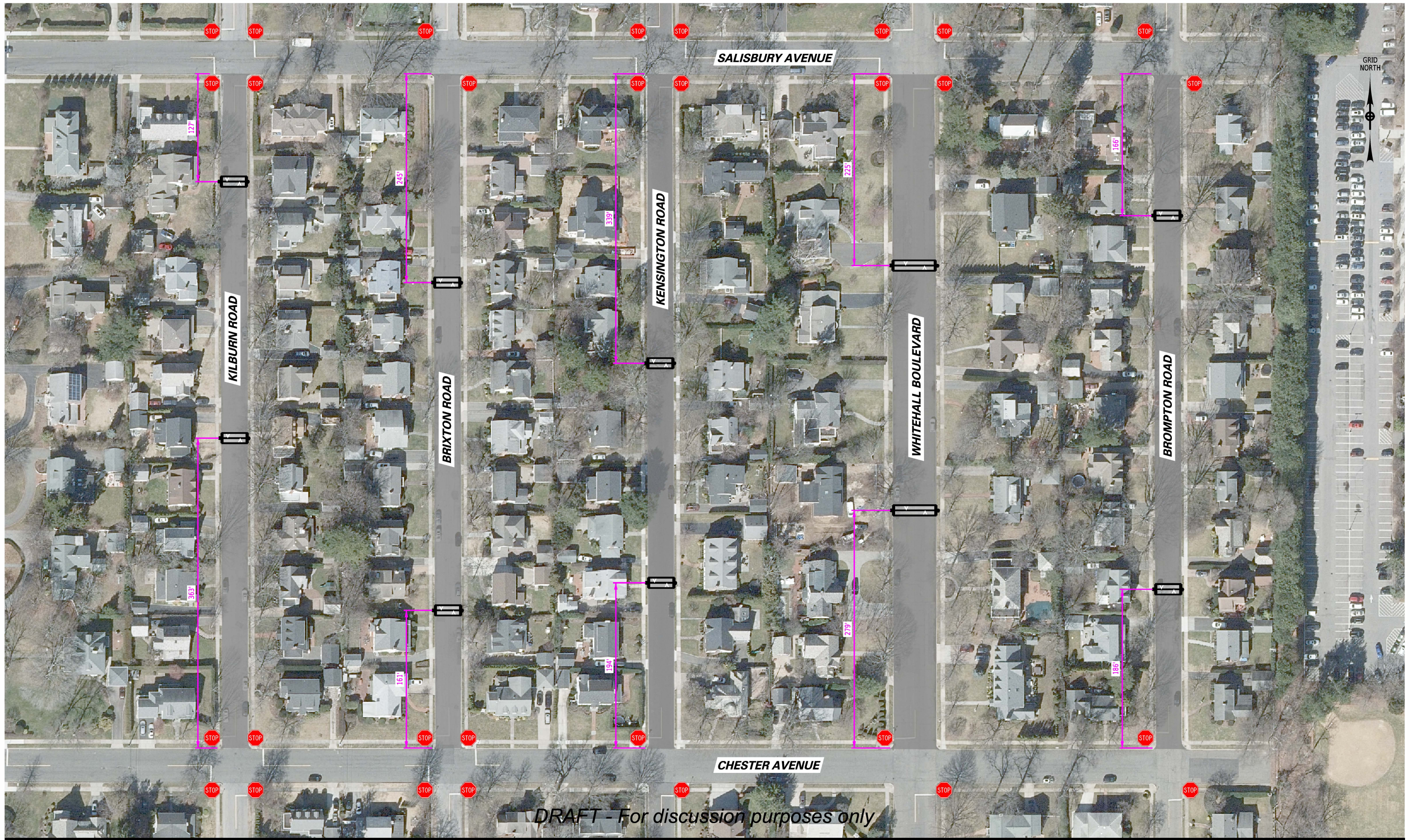
<- Middleton Rd

Edgemere Rd ->

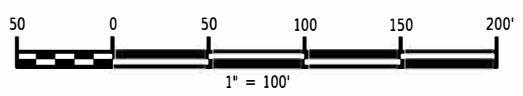


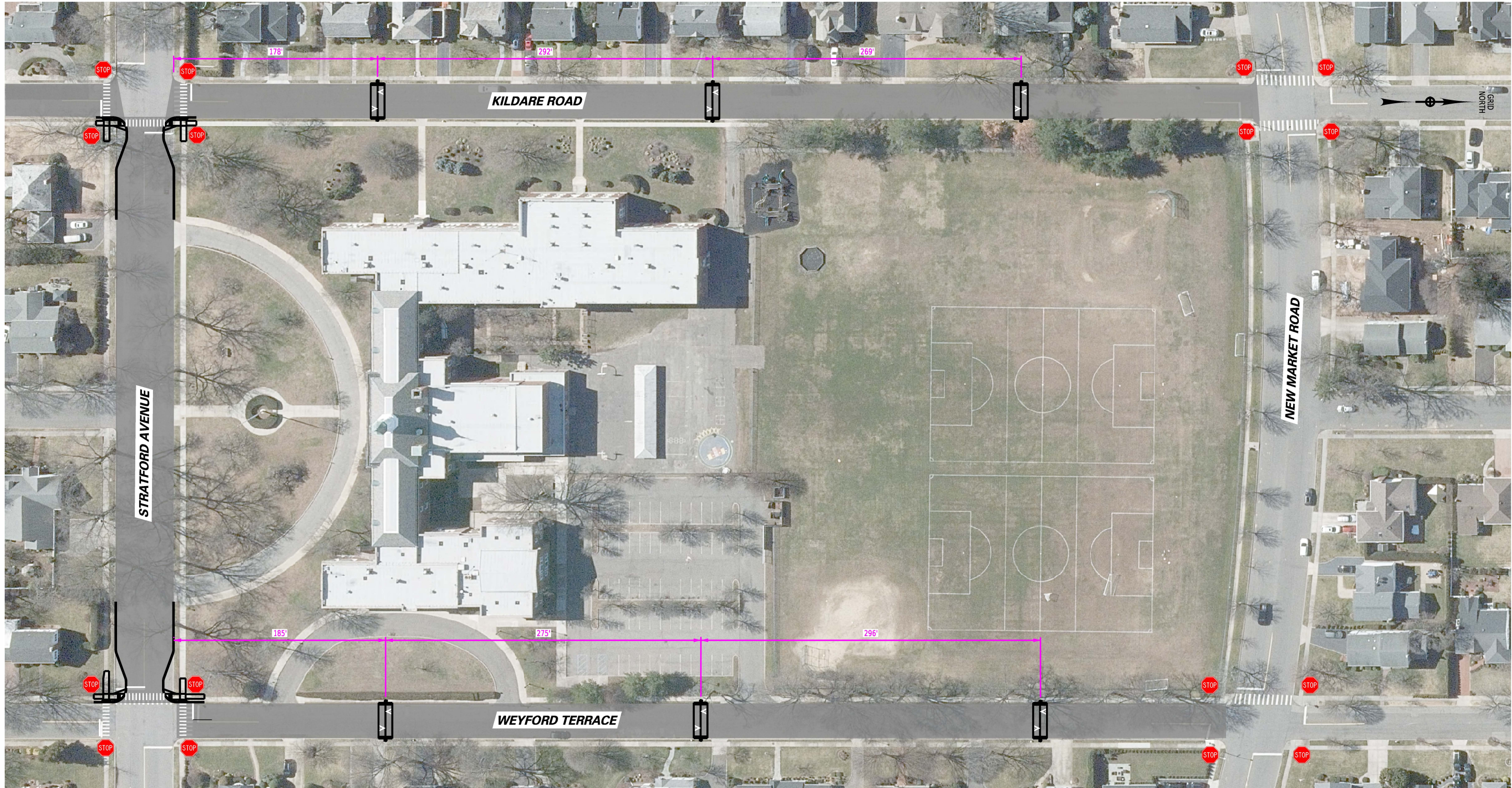
DRAFT - For discussion purposes only



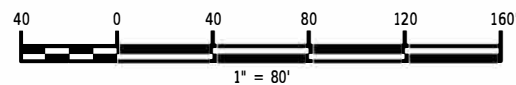


DRAFT - For discussion purposes only





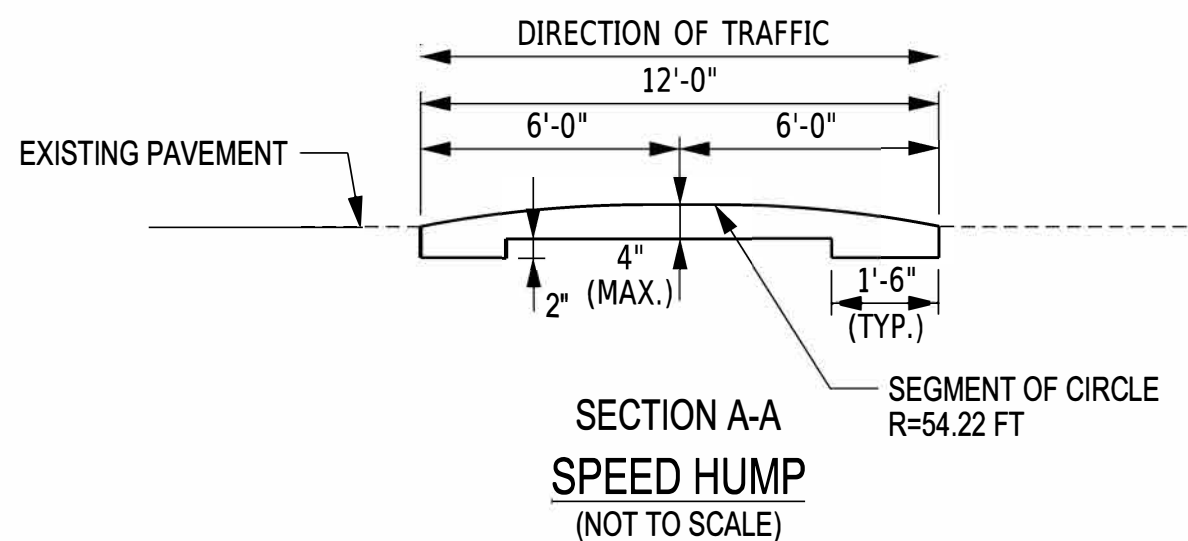
DRAFT - For discussion purposes only





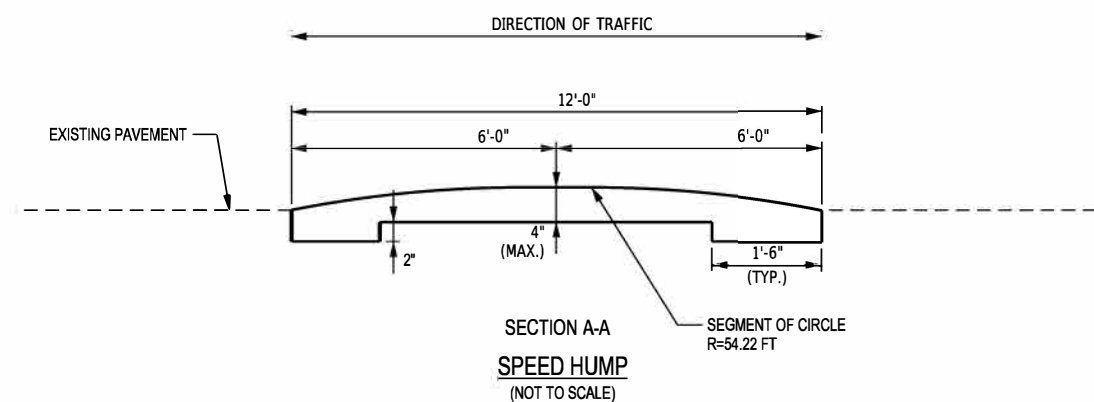
<- Tremont St

Boylston St ->

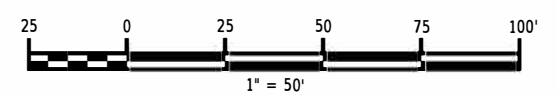


DRAFT - For discussion purposes only

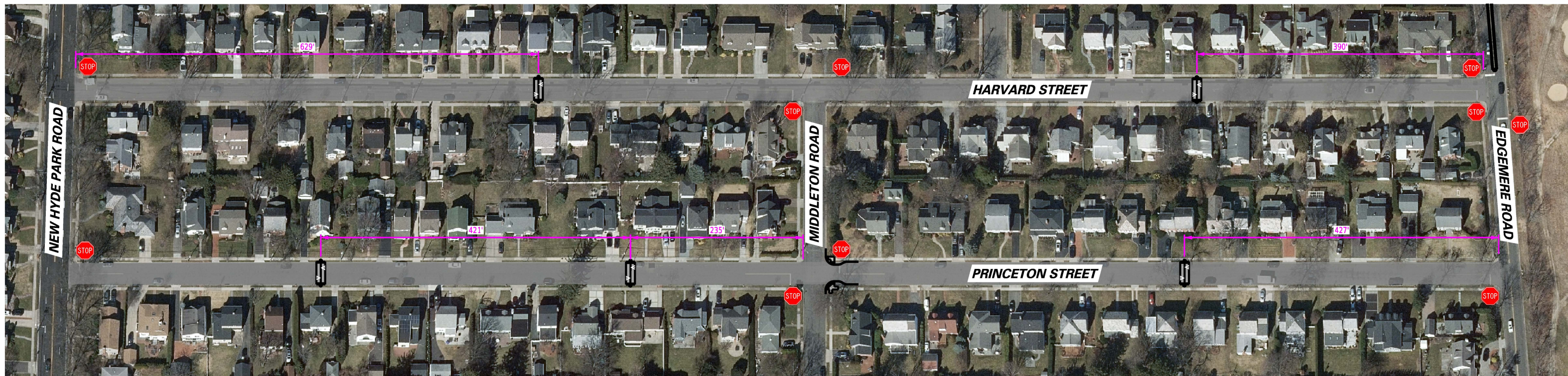




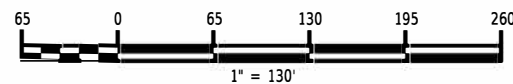
DRAFT - For discussion purposes only

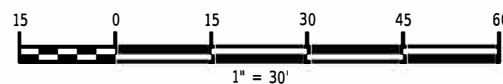
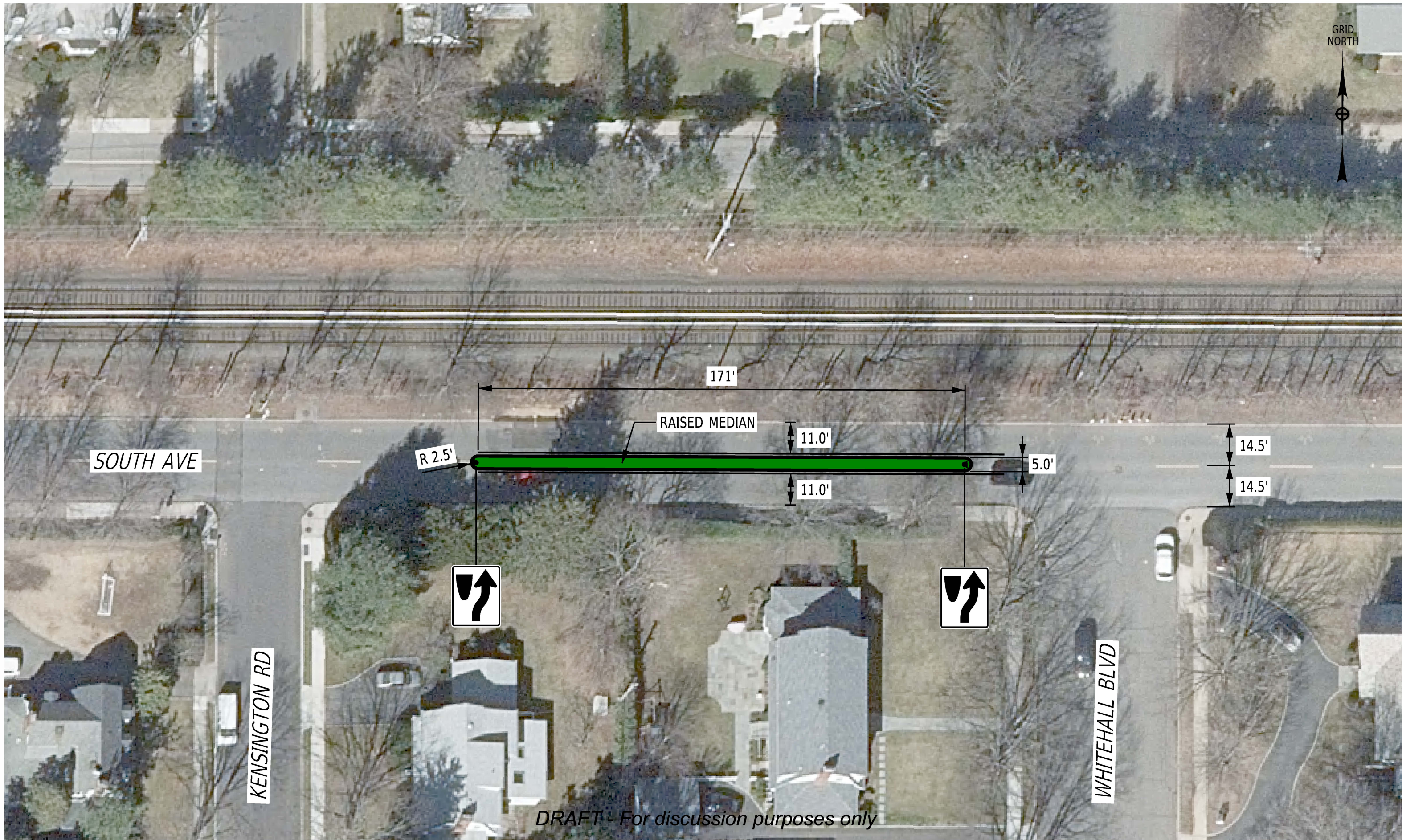


GRID NORTH



DRAFT - For discussion purposes only





GRID NORTH



390'

11.0'

11.0'

12.0'

5.0'

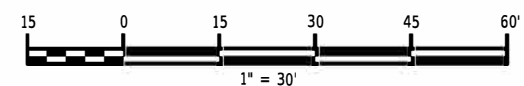
12.0'

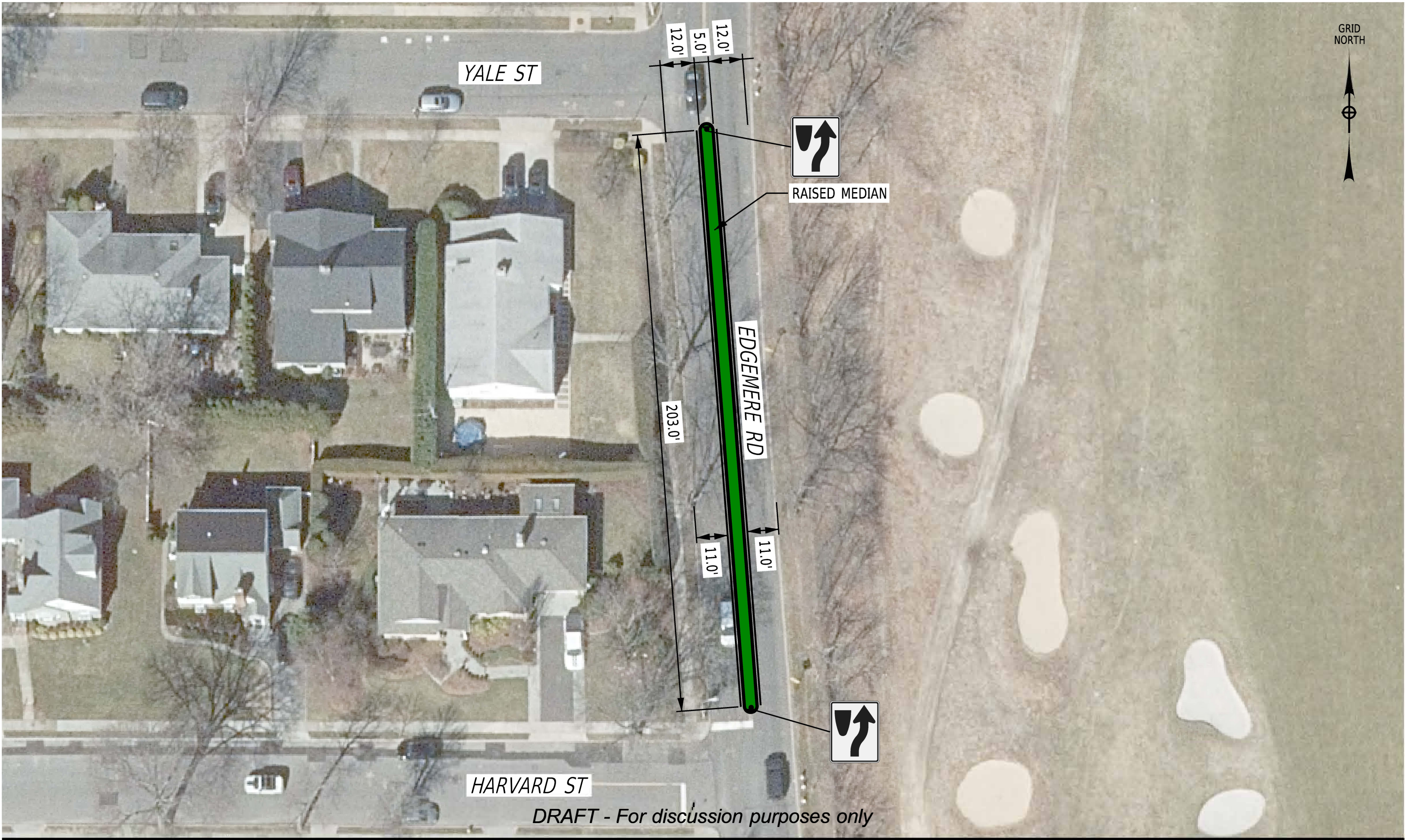
SOUTH AVE

RAISED MEDIAN

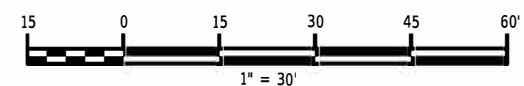


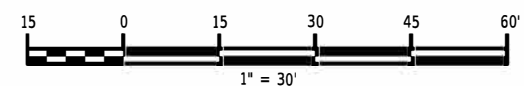
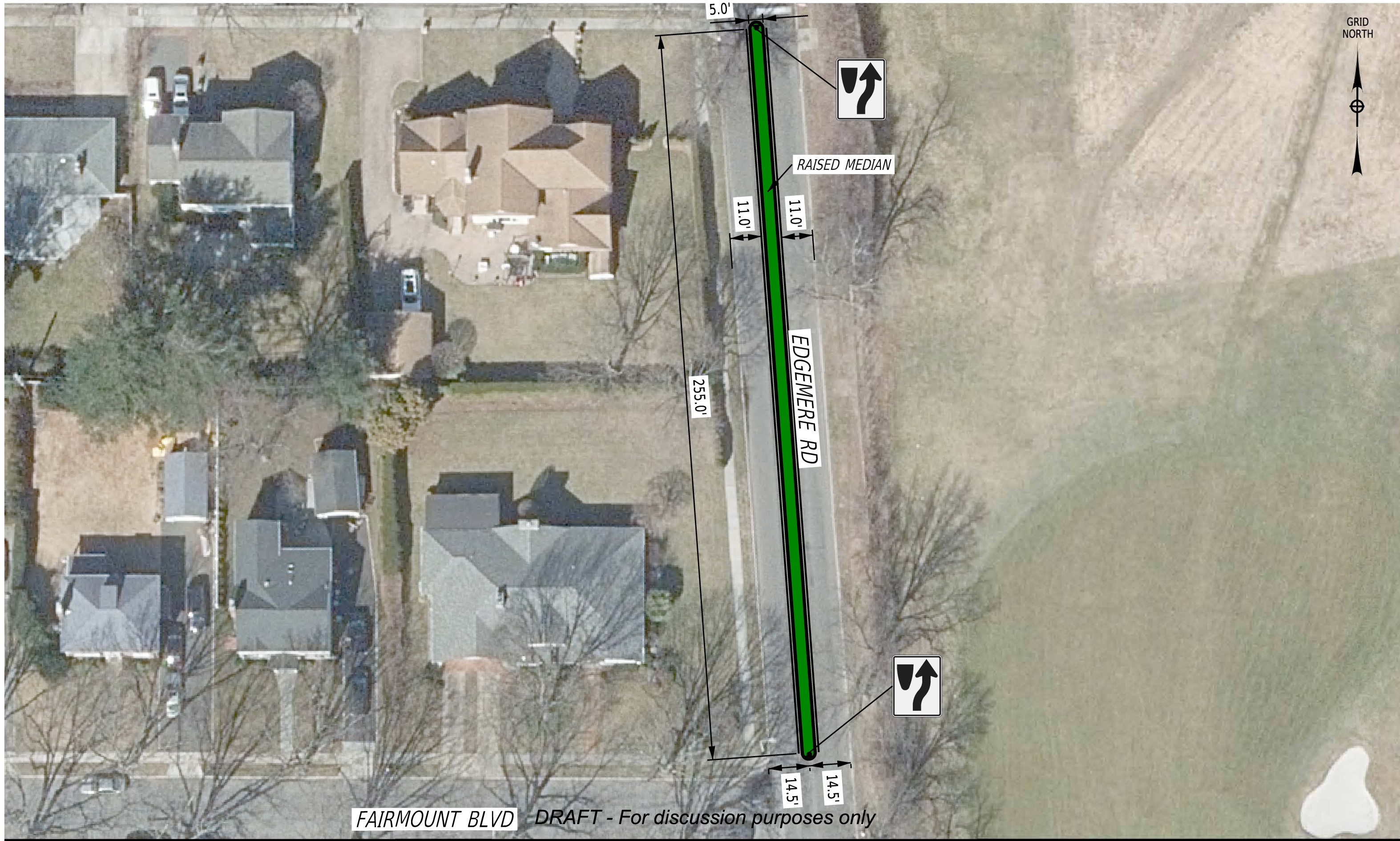
DRAFT - For discussion purposes only

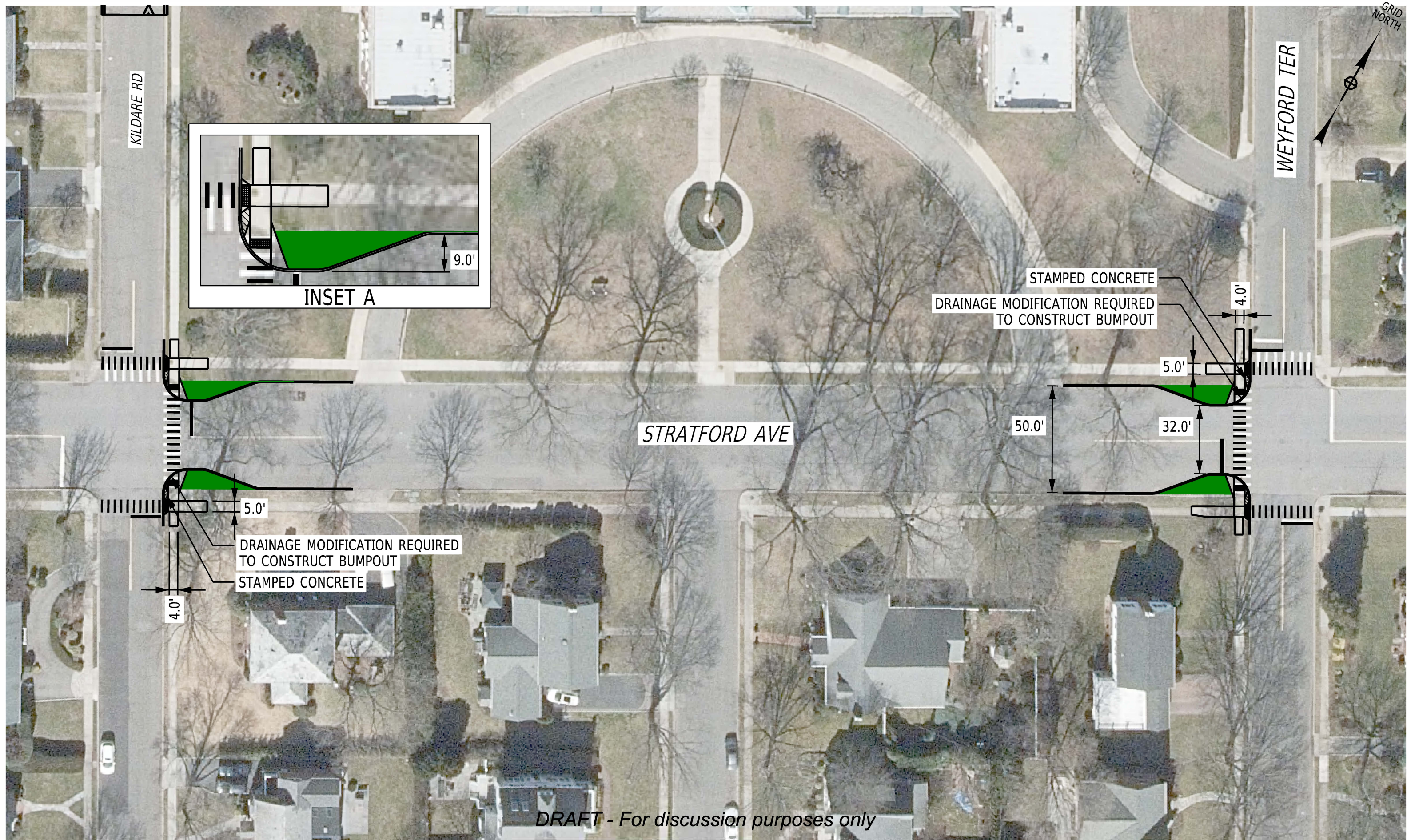




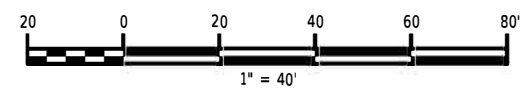
DRAFT - For discussion purposes only







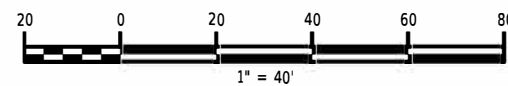
DRAFT - For discussion purposes only

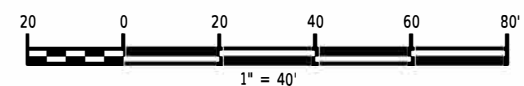
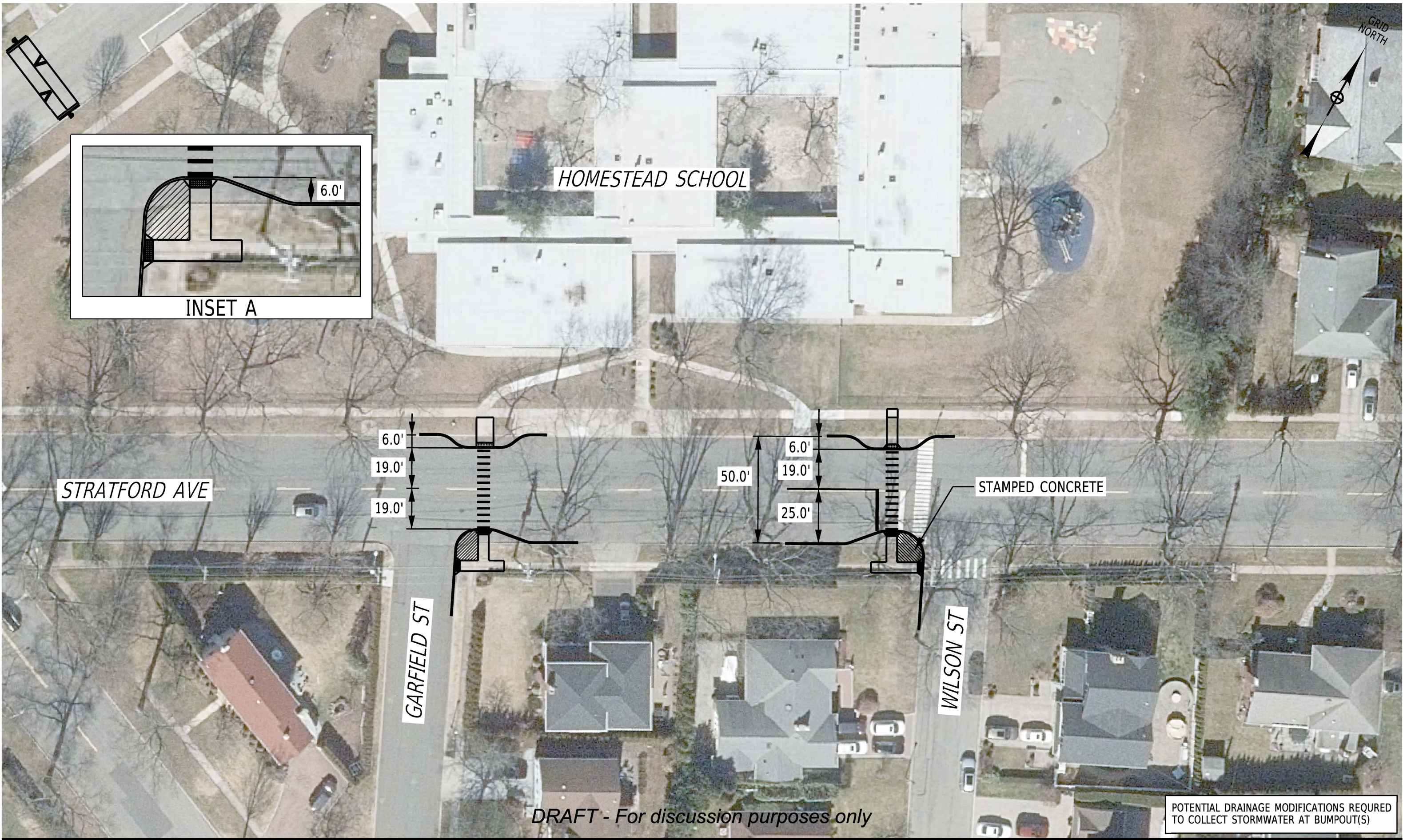


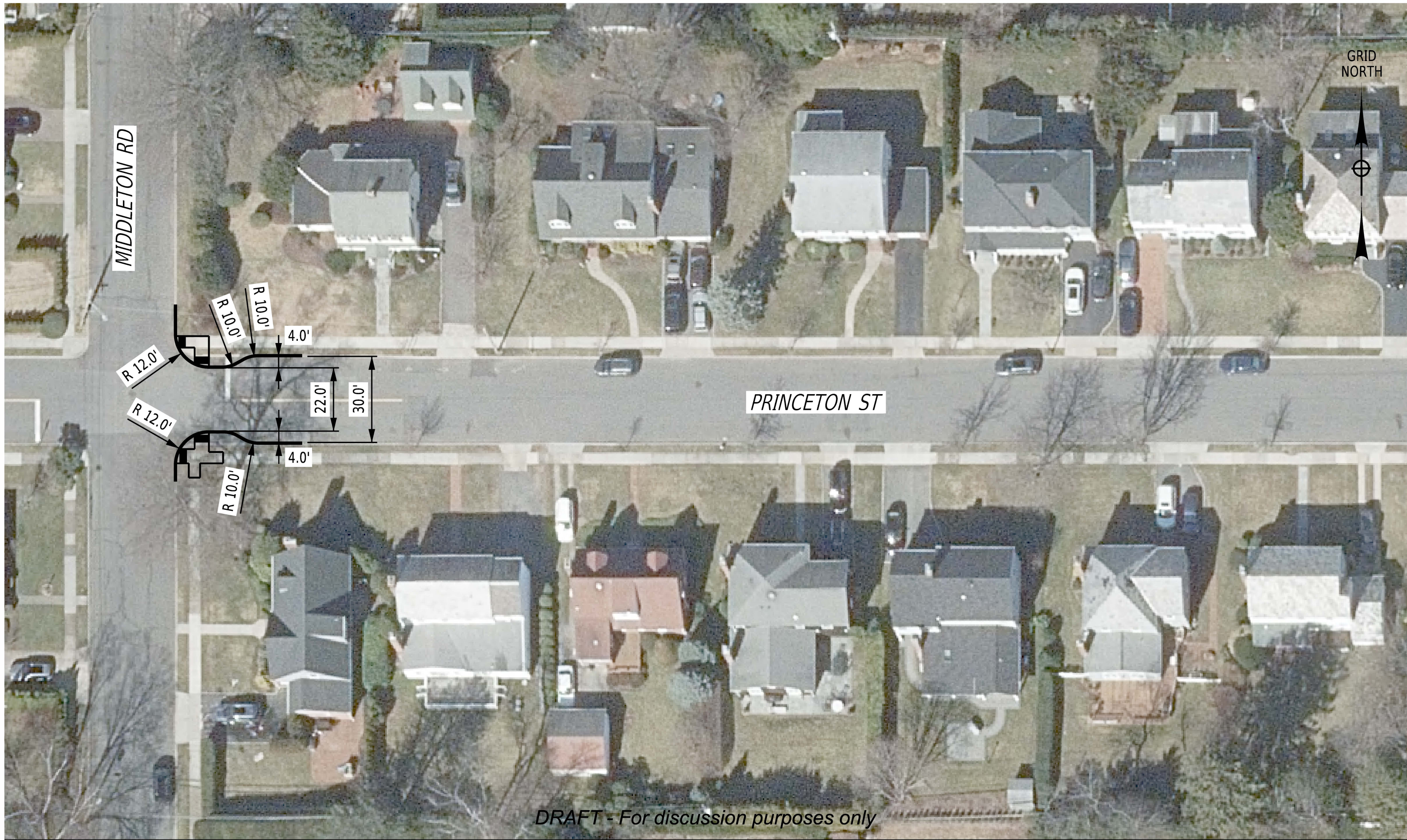


DRAFT - For discussion purposes only

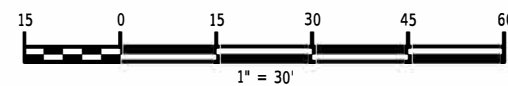
POTENTIAL DRAINAGE MODIFICATIONS REQUIRED TO COLLECT STORMWATER AT BUMPOUT(S)

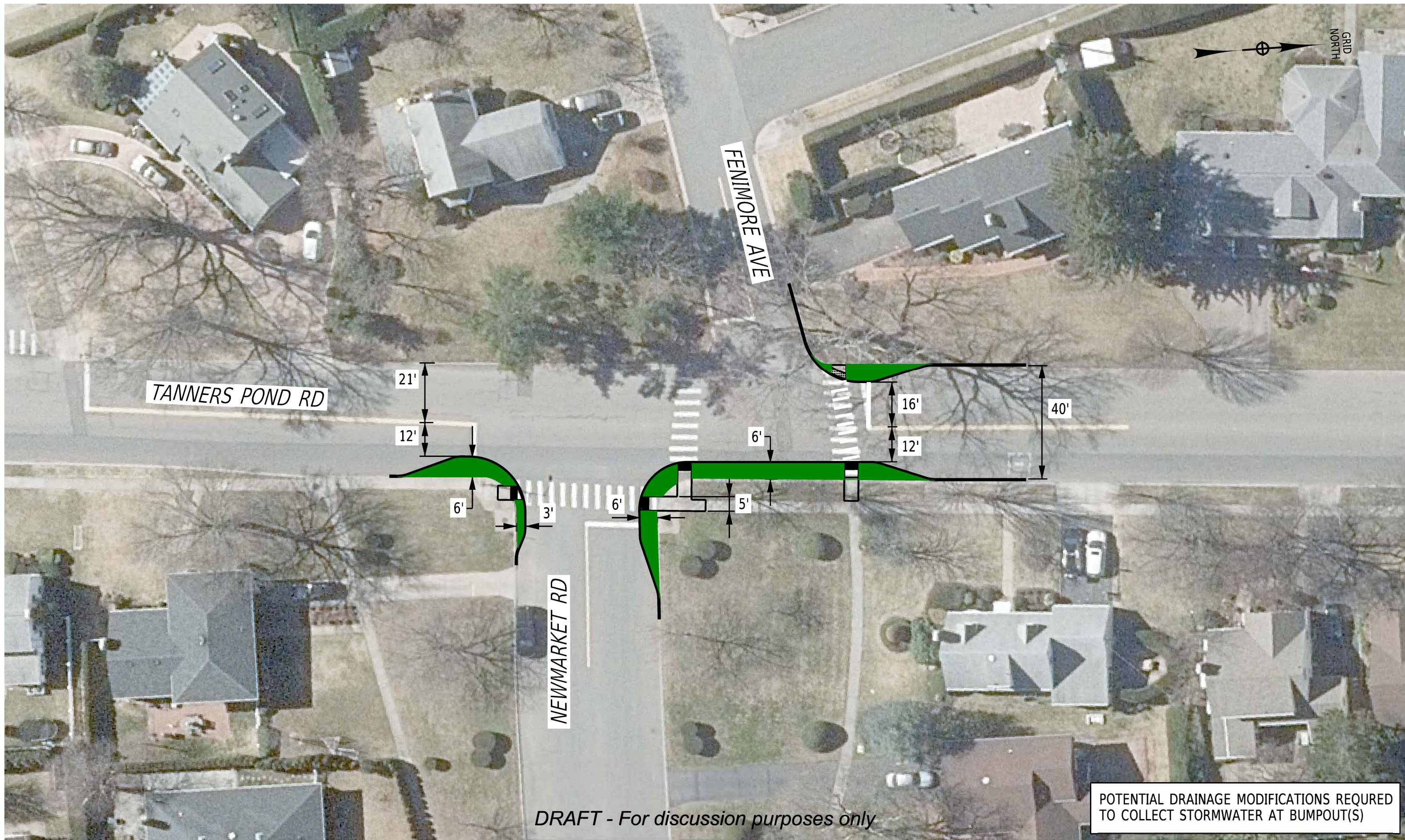






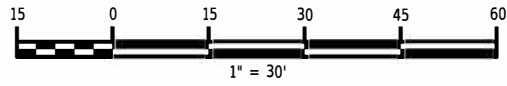
DRAFT - For discussion purposes only

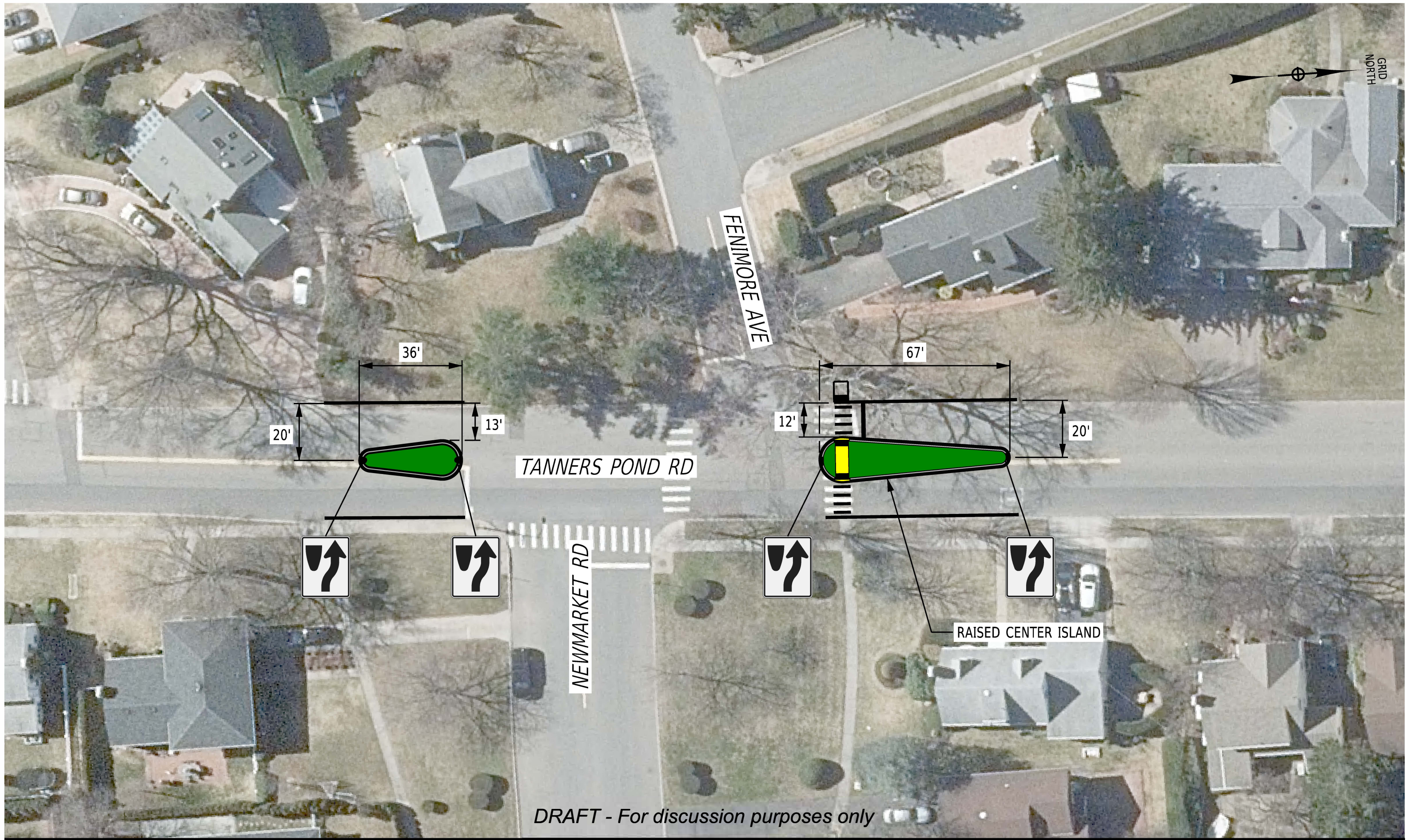




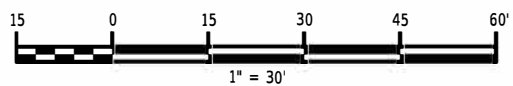
POTENTIAL DRAINAGE MODIFICATIONS REQUIRED TO COLLECT STORMWATER AT BUMPOUT(S)

DRAFT - For discussion purposes only





DRAFT - For discussion purposes only

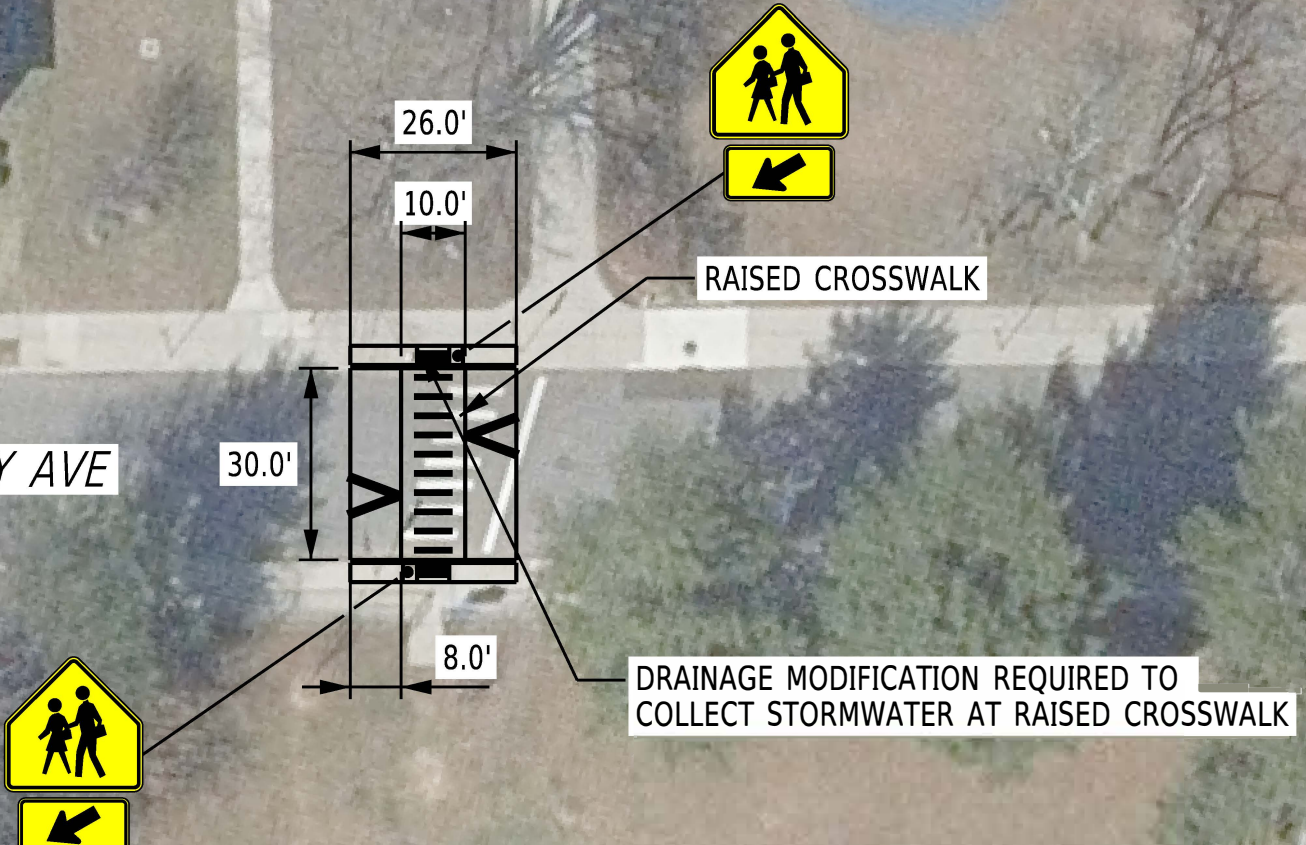


HEMLOCK ELEMENTARY SCHOOL

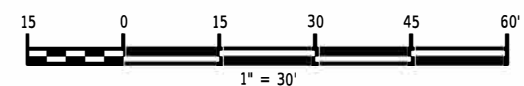
MAPLE ST

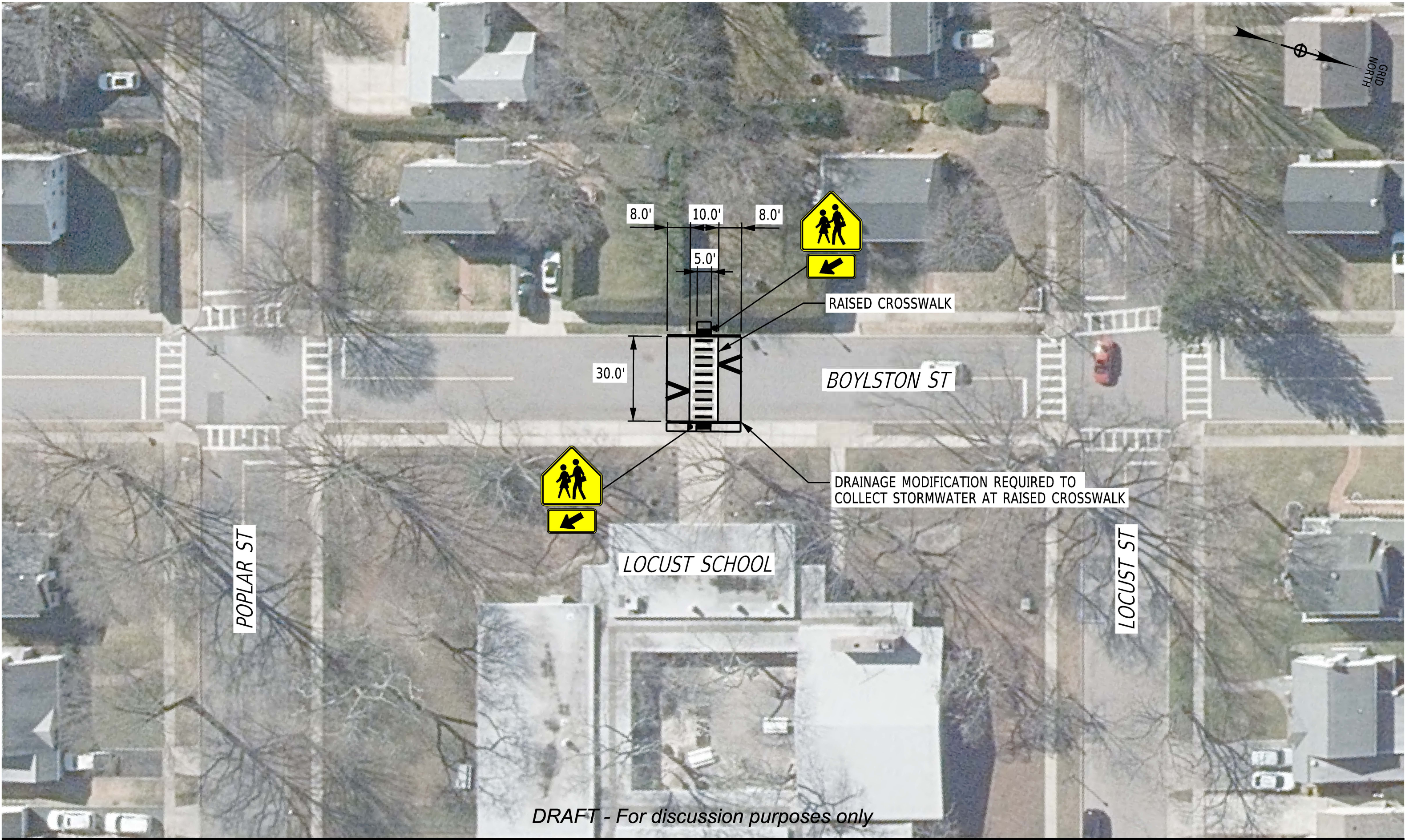
GRID NORTH

BAYBERRY AVE

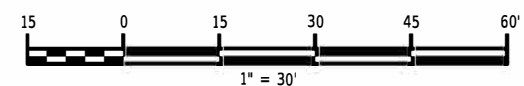


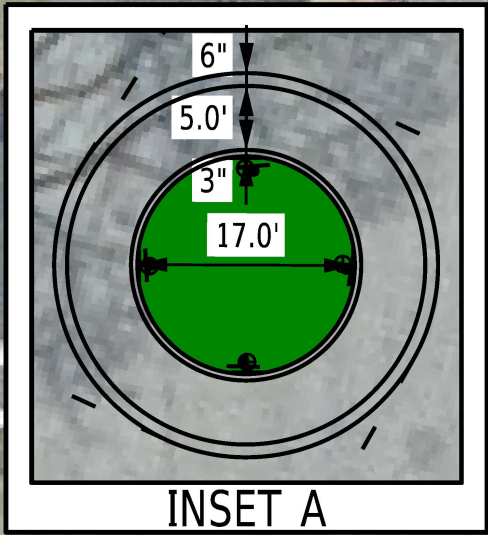
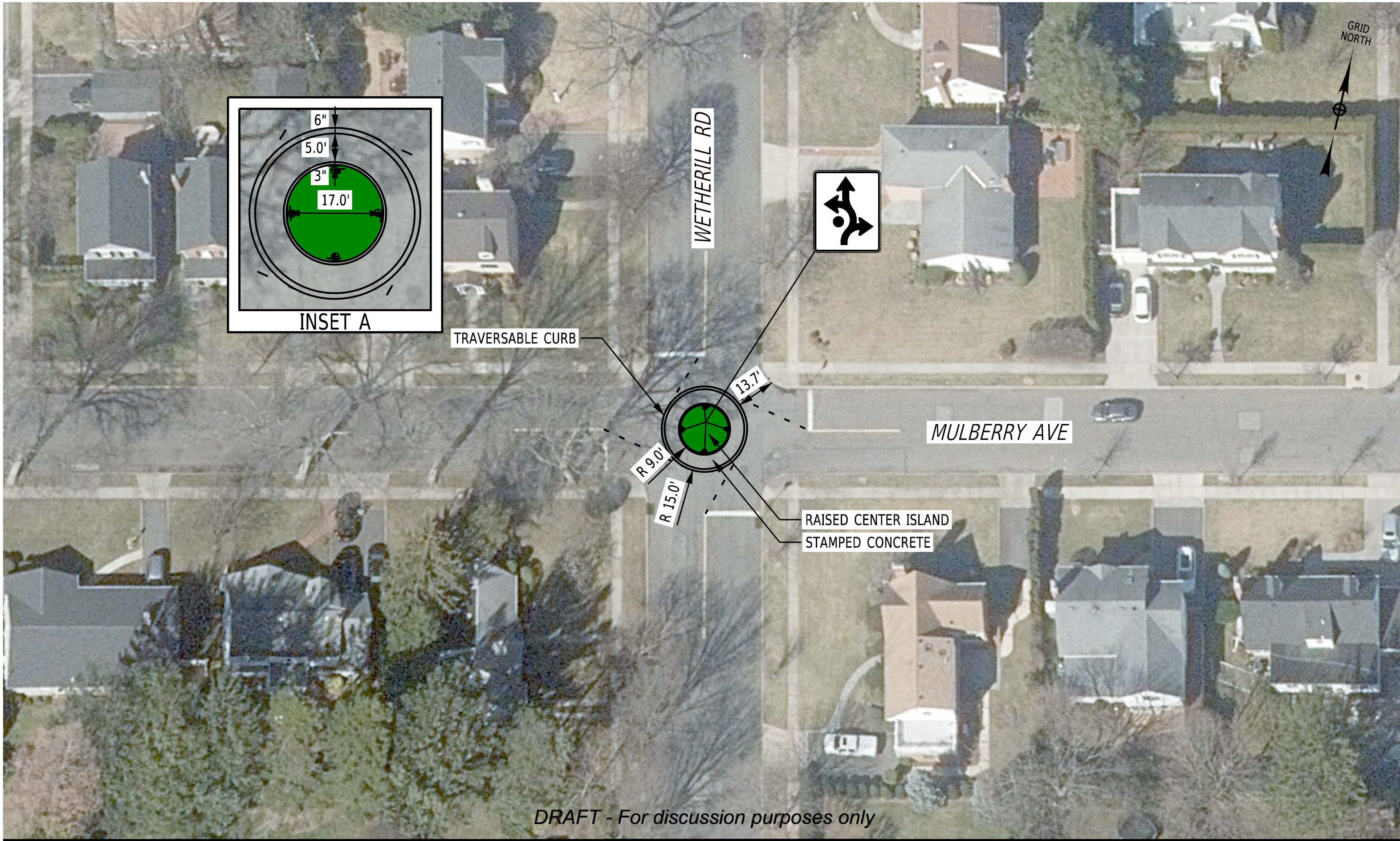
DRAFT - For discussion purposes only





DRAFT - For discussion purposes only





TRAVERSABLE CURB

WETHERILL RD

MULBERRY AVE

RAISED CENTER ISLAND
STAMPED CONCRETE

DRAFT - For discussion purposes only