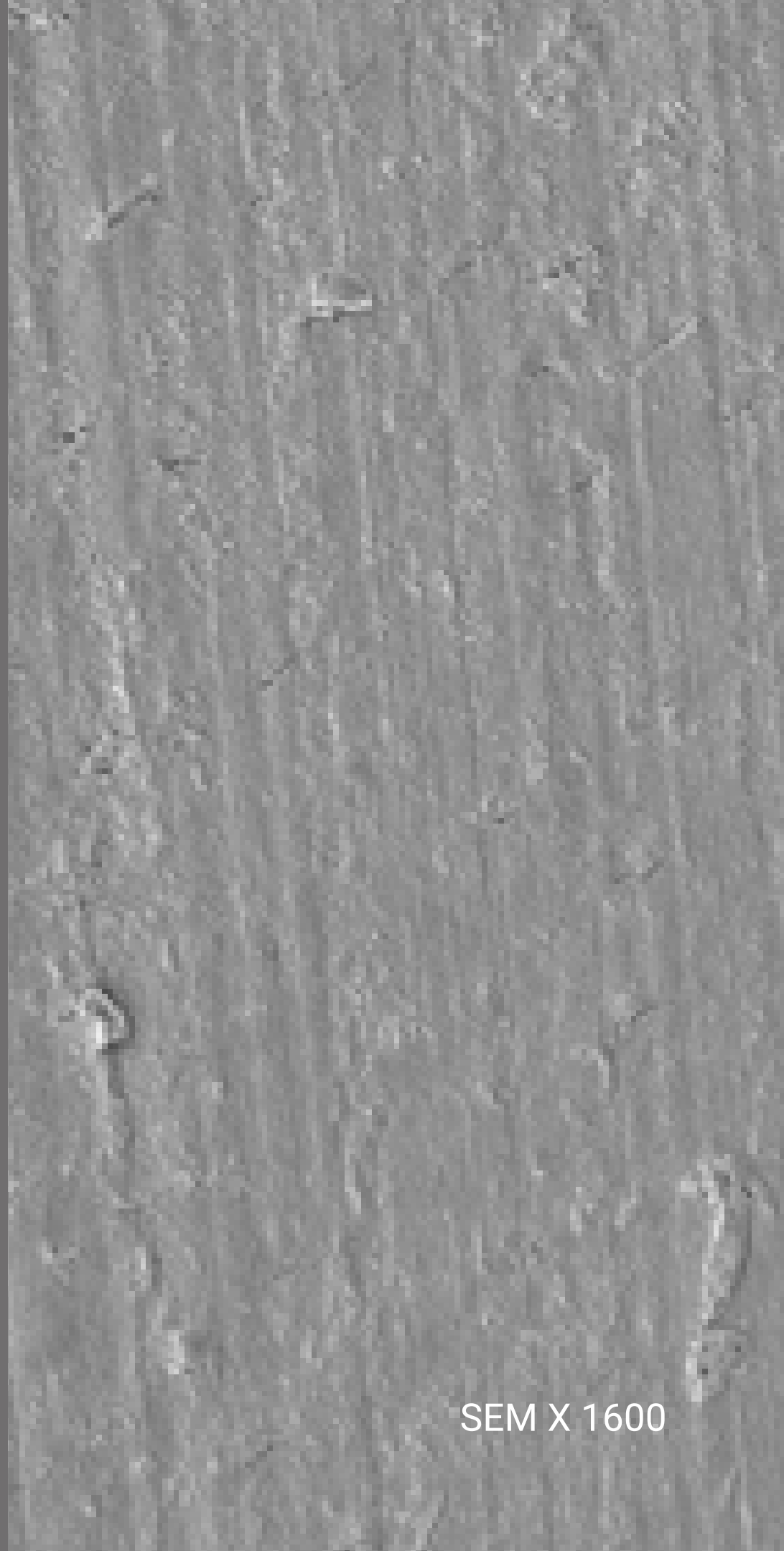


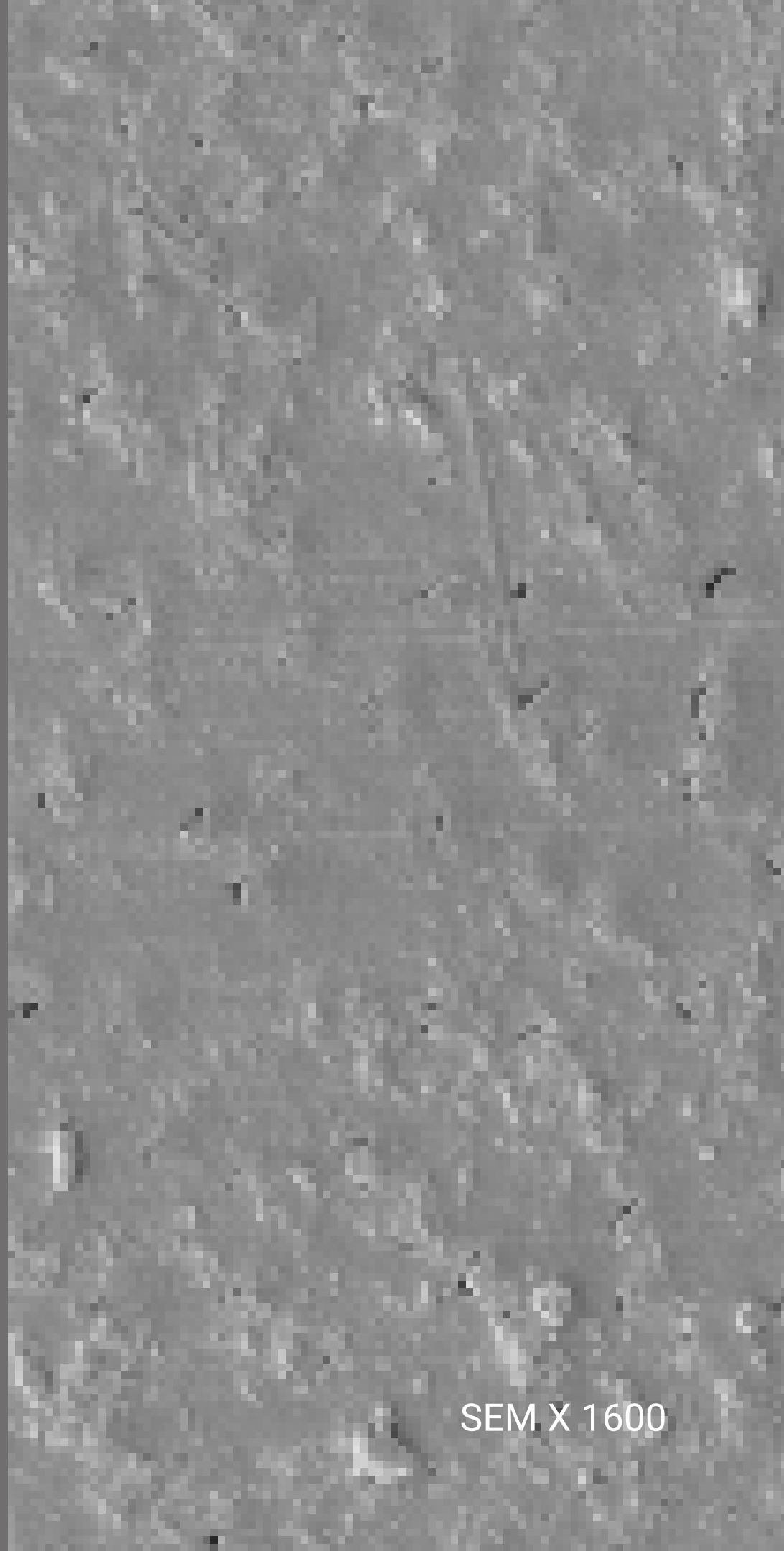
Dentin surface
roughness.

Control group



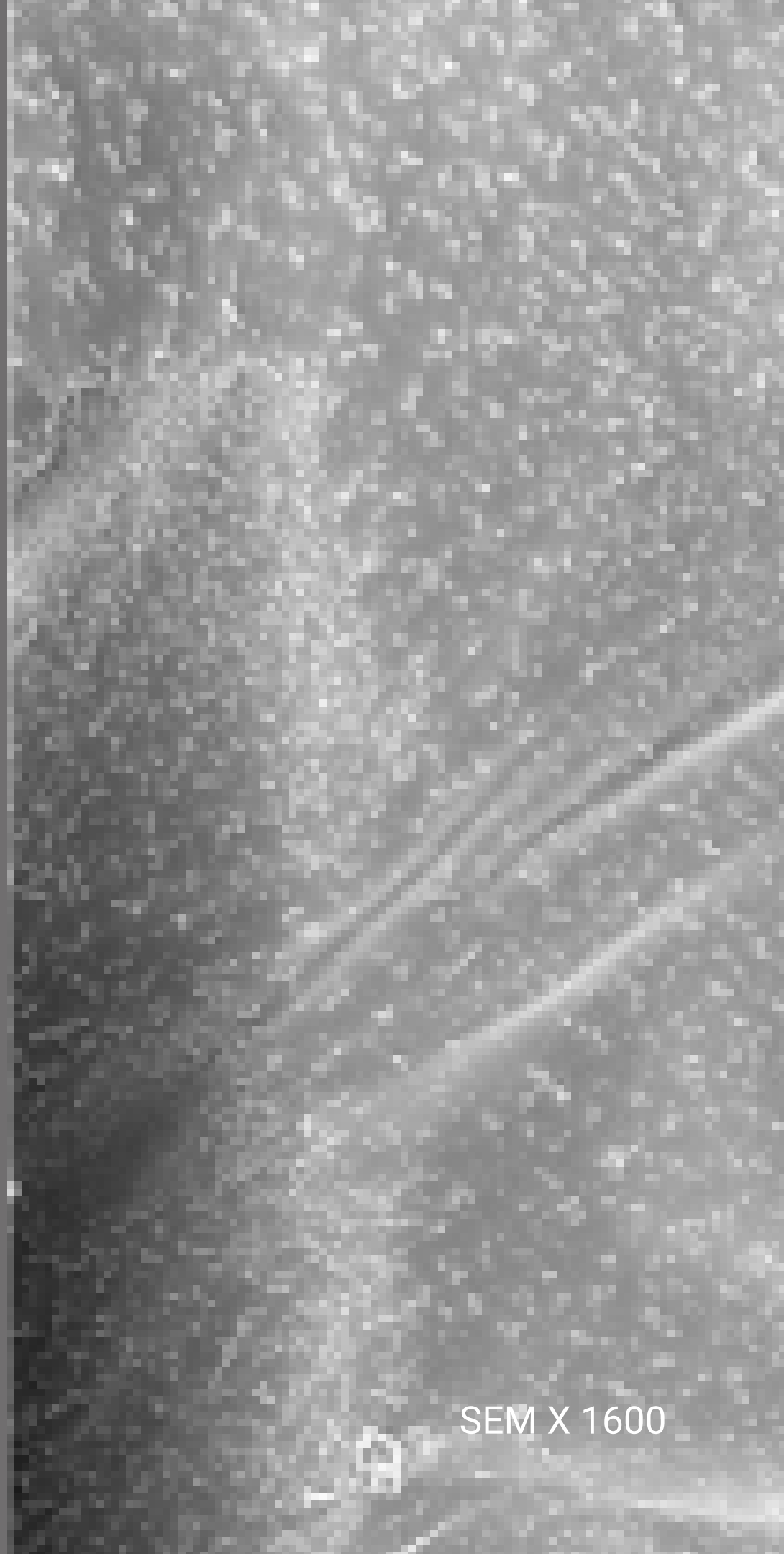
SEM X 1600

The roughness
of dentin
treated with
hyaluronic
acid
not cross-
linked



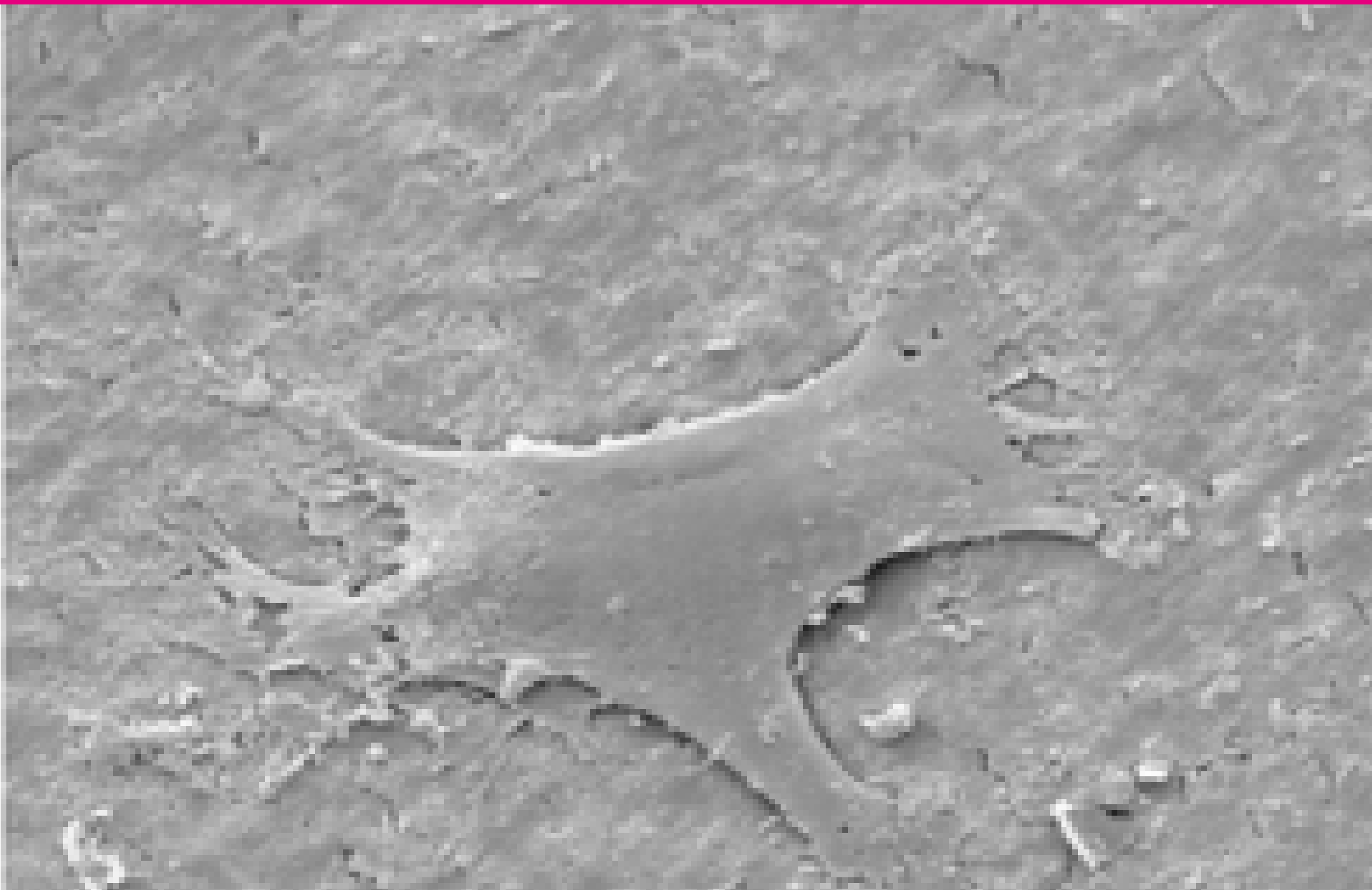
SEM X 1600

The surface
roughness of
dentin treated
with the
cross-linked
hyaluronic
acid gel

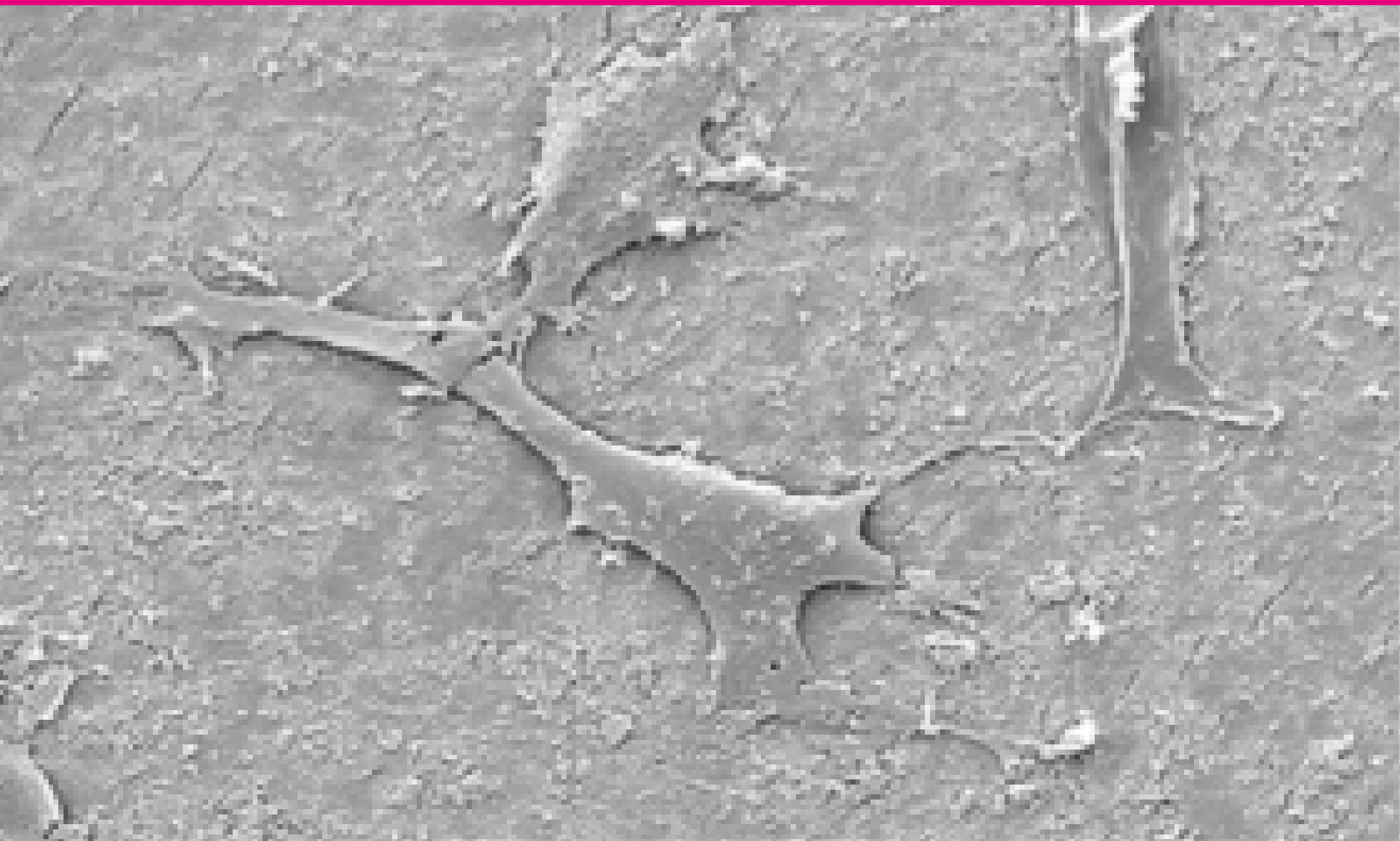


SEM X 1600

PDL cell on dentin surface.
Control group



Adhesion of the PDL cell to
dentin discs when treated with
HA not cross-linked



Better adhesion and proliferation of the PDL cell on dentin surface when treated with cross-linked HA

