



ZR

ZIMMER+ROHDE

FALL 2022


CLICKBOOK

OVERVIEW

PASSENGER FR	04	NIGHT LIFE FR	21
ROOFTOP FR	06	OVERNIGHT FR	23
HYDE PARK	09		
PICCADILLY FR	10		
TIMES SQUARE FR	11		
BROADWAY	12		
HIGH LINE	13		
METRO	15		
VILLE FR	17		
SKYLINE FR	19		



CITY VIBES

ZIMMER+ROHDE

One of the most exciting aspects of urban living is the almost limitless possibilities that are available to everyone, whether permanent residents or visitors stopping by for a weekend or on a business trip to soak up the pulsating atmosphere of a metropolis. The concentration of different lifestyles, cultural influences and art forms continually inspires the creation of new and surprising ideas for collective life in the city. Interiors blossom into creative collages; private spaces open up to reveal vivid personal portraits of the people living in them. Public spaces such as hotels, restaurants and bars can reference their immediate surroundings to imbue the interior setting with a distinctive identity – a sense of place – creating a welcoming feel of home. Both expressiveness and functionality are equally important.

The new Zimmer + Rohde collection does justice to this sophisticated mix of extremely diverse expectations by valuing the creativity of artists and artisans and emphasizing new features by using innovative material and manufacturing techniques.

CITY VIBES boasts a casual, natural look with a focus on the greatest range of applications possible.

A photo showcase for the collection was held in an apartment once owned by Auguste Perret, one of the pioneering architects and city planners of the twentieth century. This architectural jewel in the heart of Paris dating from 1934 is the perfect backdrop for these expressive textile personalities. The influence of this gorgeous, timeless mid-century style, which is inherent in some of our new designs, is exquisitely highlighted by the interplay of incredibly modernist architectural elements.

Functionality and elegance combine to create a harmonious balance in this interior, which remains unchanged to this day – an homage to what excellent design can achieve and embody.



OVERVIEW

PASSENGER FR

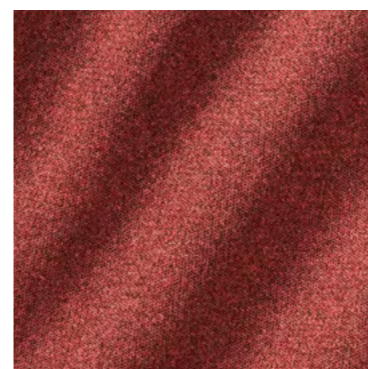
ZIMMER+ROHDE



10932-175



10932-285



10932-336



10932-395

NAME Passenger FR
ARTICLE NUMBER 10932
CATEGORY Upholstery

FABRIC WIDTH 146 cm
MATERIAL 100% PES FR
MARTINDALE 50.000

PROPERTIES Regionally Sourced 
CARE INSTRUCTIONS     

With the appearance of a classic woolen fabric, PASSENGER FR impresses at first glance with its modern clean surface. A closer look reveals the multi-colored yarn mélange, adding special depth to the fabric's color palette. The durable upholstery fabric is knitted, giving it elastic properties that are ideal for the upholstery of rounded furniture shapes. PASSENGER FR is made of 100% flame retardant polyester and complies with the European standard EN 1021 for upholstery fabrics.

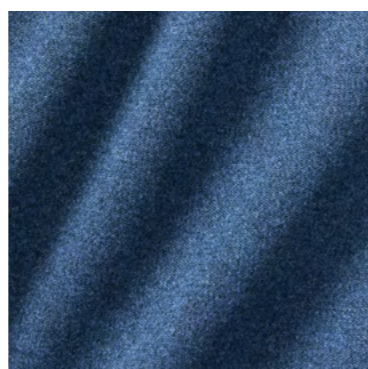
ZIMMER+ROHDE



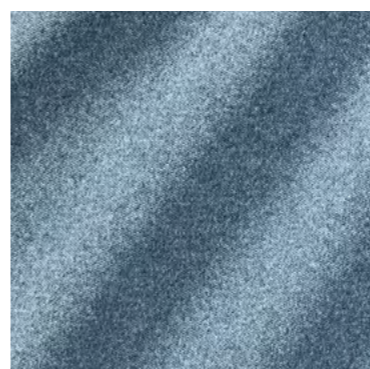
10932-493



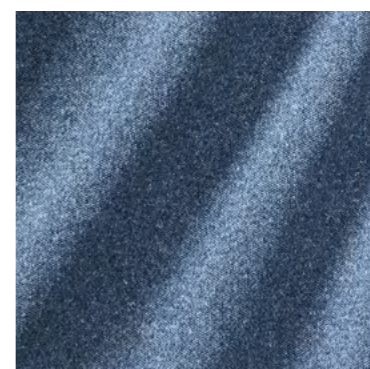
10932-554



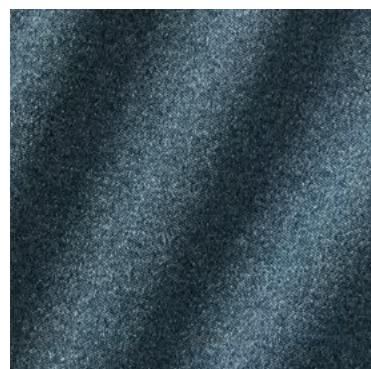
10932-558



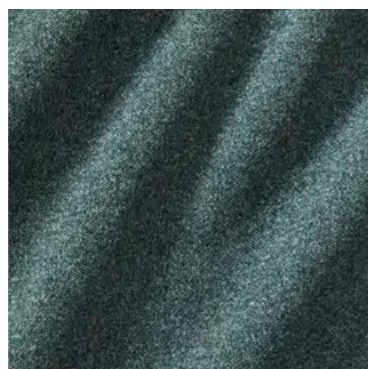
10932-566



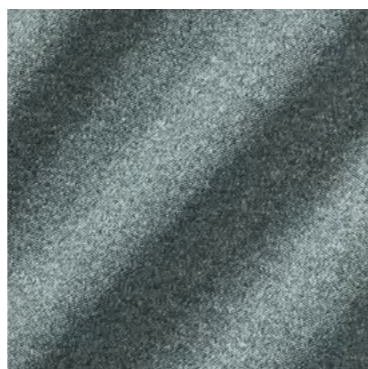
10932-597



10932-677



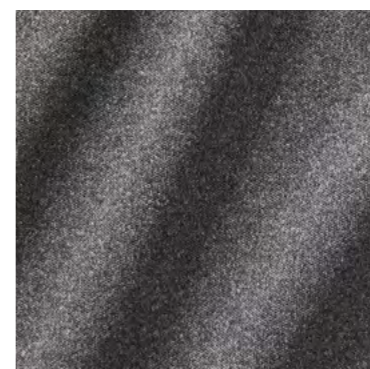
10932-777



10932-796



10932-836



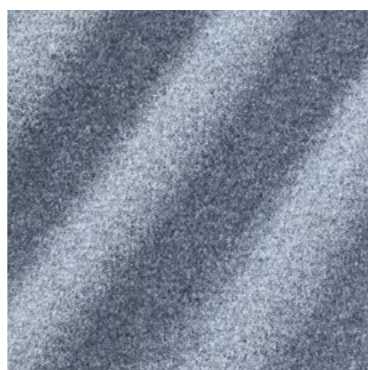
10932-887



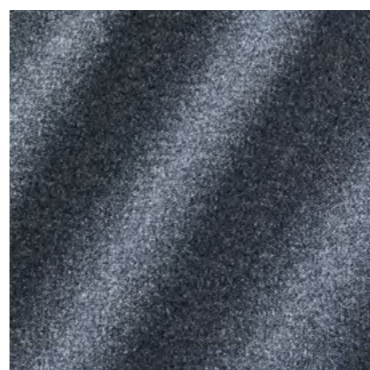
10932-894



10932-994



10932-996




10932-998

SELECT ALL*

NAME Passenger FR
ARTICLE NUMBER 10932
CATEGORY Upholstery

FABRIC WIDTH 146 cm
MATERIAL 100% PES FR
MARTINDALE 50.000

PROPERTIES Regionally Sourced 
CARE INSTRUCTIONS 

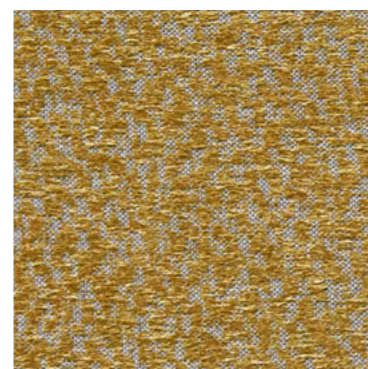
* By selecting this button you receive all colorways of this article.



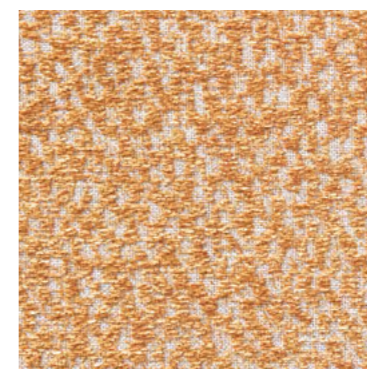
OVERVIEW

ROOFTOP FR

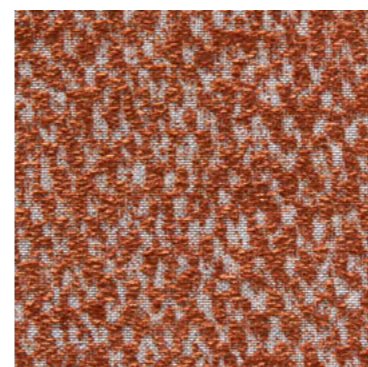
ZIMMER+ROHDE



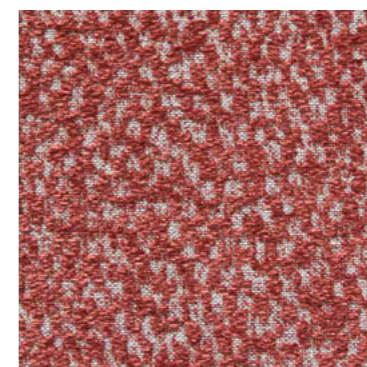
10933-114



10933-215



10933-226



10933-326

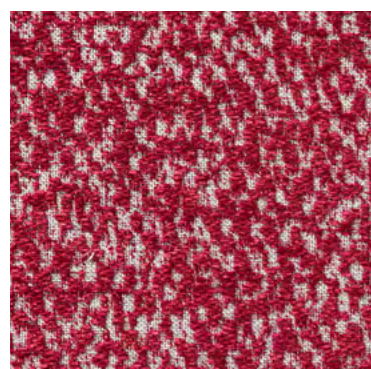
NAME Rooftop FR
ARTICLE NUMBER 10933
CATEGORY Upholstery

FABRIC WIDTH 150 cm
MATERIAL 100% PES CS
MARTINDALE 100.000

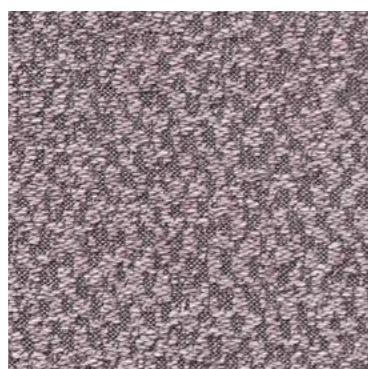
PROPERTIES
CARE INSTRUCTIONS

ROOFTOP FR is a durable jacquard fabric with a universal all-over design. Velvety chenille yarn in the weft creates a pleasant feel and a soft three-dimensional effect. Made of 100% flame retardant Trevira CS, the washable upholstery fabric is also recommended for highly frequented living situations in both private and public spaces.

ZIMMER+ROHDE



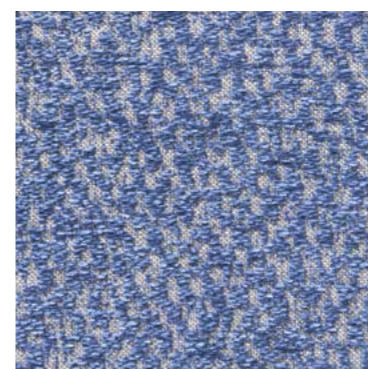
10933-337



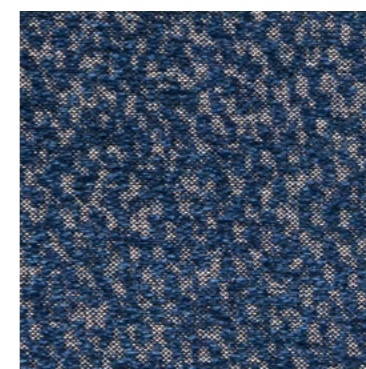
10933-445



10933-447



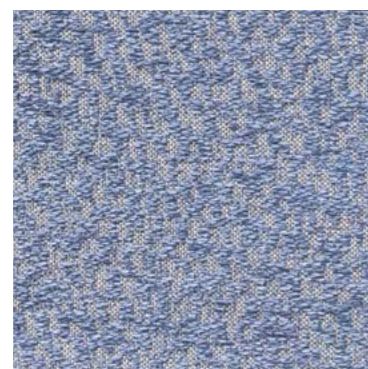
10933-555



10933-557



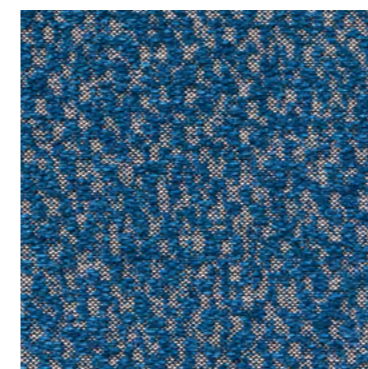
10933-558



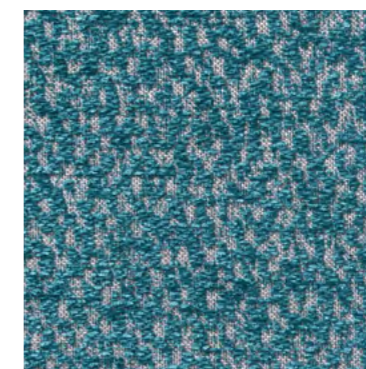
10933-564



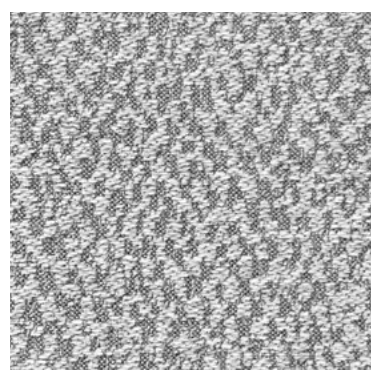
10933-654



10933-658



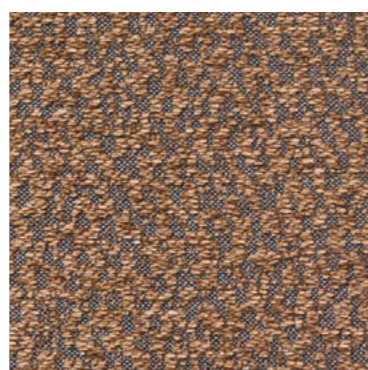
10933-777



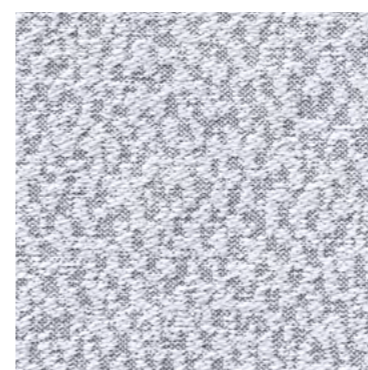
10933-788



10933-825



10933-828



10933-882



10933-884

NAME Rooftop FR
ARTICLE NUMBER 10933
CATEGORY Upholstery

FABRIC WIDTH 150 cm
MATERIAL 100% PES CS
MARTINDALE 100.000

PROPERTIES
CARE INSTRUCTIONS

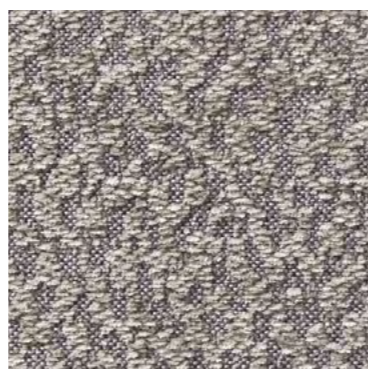
ZIMMER+ROHDE



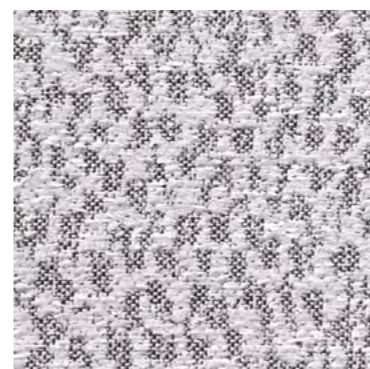
10933-885



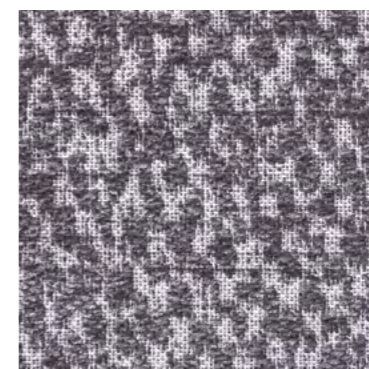
10933-886



10933-888



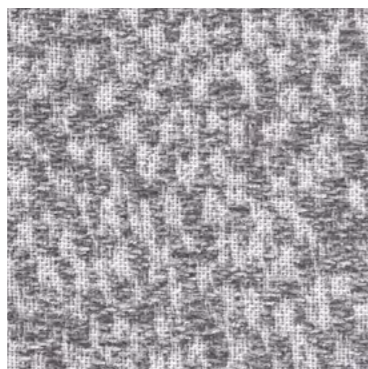
10933-893



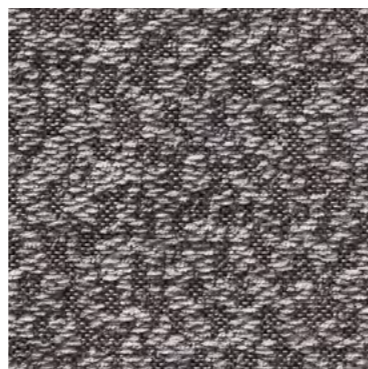
10933-899



10933-900



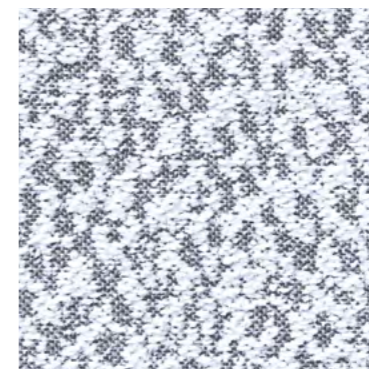
10933-985



10933-988



10933-989



10933-991



10933-998

SELECT ALL

NAME Rooftop FR
ARTICLE NUMBER 10933
CATEGORY Upholstery

FABRIC WIDTH 150 cm
MATERIAL 100% PES CS
MARTINDALE 100.000

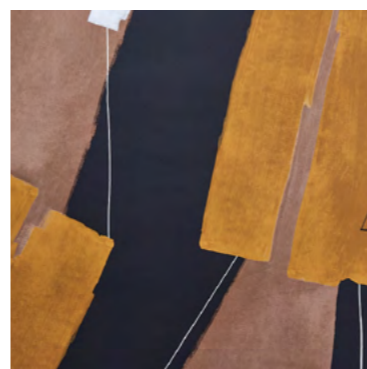
PROPERTIES
CARE INSTRUCTIONS



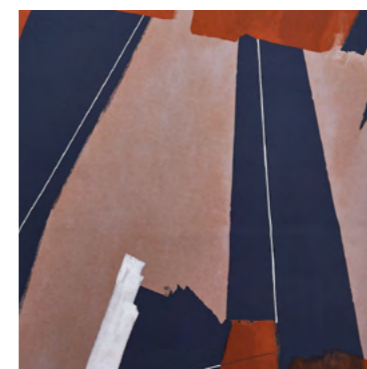
OVERVIEW

HYDE PARK

ZIMMER+ROHDE



10934-185



10934-256



10934-576



10934-891

SELECT ALL

NAME Hyde Park
ARTICLE NUMBER 10934
CATEGORY Decoration

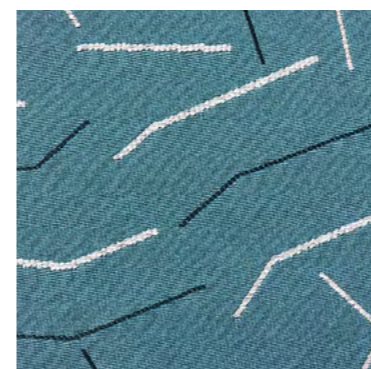
FABRIC WIDTH 150 cm Usable Width: 143 cm
MATERIAL 100% CO
MARTINDALE

PROPERTIES
CARE INSTRUCTIONS

HYDE PARK mirrors the dynamic and cultural diversity of a vibrant metropolis. Printed digitally onto finest cotton satin, the sweeping generous brushstrokes form to create a dynamic all-over design. The richly contrasting combination of the painterly color fields and the fine lines is impactful from a distance while also convincing on closer inspection with its attention to detail.



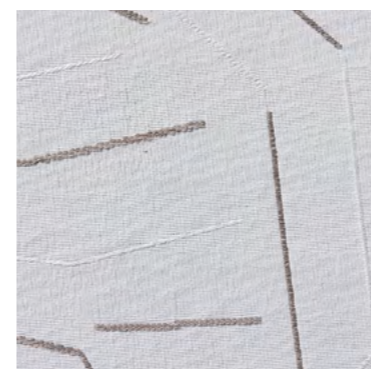
PICCADILLY FR



10935-695



10935-826



10935-891



10935-984

SELECT ALL

OVERVIEW

ZIMMER+ROHDE

NAME Piccadilly FR
ARTICLE NUMBER 10935
CATEGORY Decoration

FABRIC WIDTH 143 cm
MATERIAL 100% PES CS
MARTINDALE

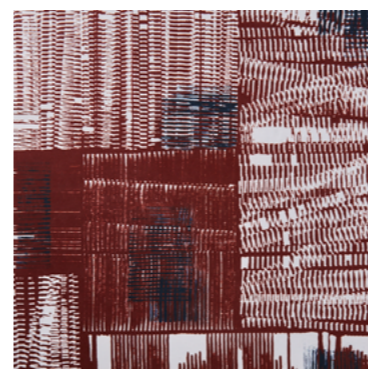
PROPERTIES
CARE INSTRUCTIONS

PICCADILLY FR is inspired by the lively urban labyrinth of a vibrant city. The fine broken lines of the geometric jacquard design set rhythmic color accents on the smooth, monochrome fabric surface. Thanks to its flame-retardant material composition, the dense yet soft-flowing decorative fabric is equally suited to private and public spaces and has excellent acoustic properties.



TIMES SQUARE FR

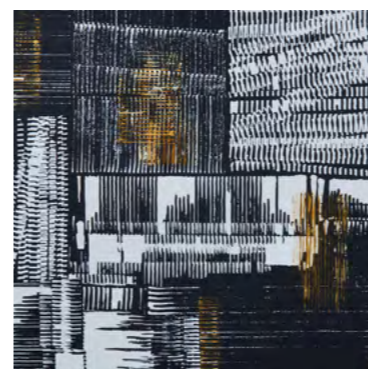
ZIMMER+ROHDE



10936-356



10936-588



10936-988



10936-992

SELECT ALL

NAME Times Square FR
ARTICLE NUMBER 10936
CATEGORY Decoration Upholstery

FABRIC WIDTH 144 cm Usable Width: 137 cm
MATERIAL 100% PES CS
MARTINDALE 100.000

PROPERTIES
CARE INSTRUCTIONS

“Crossroads of the world” is what New Yorkers call the famous TIMES SQUARE, after which this expressive print design on velour is named. Bright light reflections sparkle on the contrasting dark background, reminiscent of the countless neon signs that line the busy square where locals and tourists gather together to celebrate one of the biggest New Year’s Eve celebrations in the world. Our TIMES SQUARE design is a decorative upholstery fabric for the home as well as for public areas such as restaurants, theaters and hotel interiors.



OVERVIEW

BROADWAY

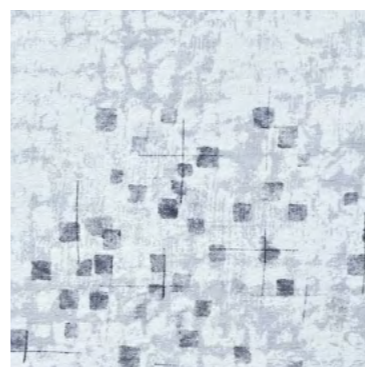
ZIMMER+ROHDE



10937-184



10937-815



10937-981



10937-996

SELECT ALL

NAME Broadway
ARTICLE NUMBER 10937
CATEGORY Decoration

FABRIC WIDTH 145 cm
MATERIAL 60% CO, 40% LI
MARTINDALE

PROPERTIES 
CARE INSTRUCTIONS 

The shimmering lights of one of the world's most famous theater districts were transformed for the fabric BROADWAY, bringing together innovative technology and artisanal skills in a clever combination of digital and hand printing. BROADWAY has a purist look which nevertheless exudes artistic expression.



HIGH LINE

ZIMMER+ROHDE



10938-287



10938-336



10938-487



10938-765

NAME High Line
ARTICLE NUMBER 10938
CATEGORY Decoration

FABRIC WIDTH 150 cm
MATERIAL 67% LI, 27% PAN, 6% PES
MARTINDALE

PROPERTIES Regionally Sourced, Resource Efficient Production, Eco Friendly Product
CARE INSTRUCTIONS 

The contrast of organic plant life in a post-industrial setting around New York's popular High Line Park is what makes this such an extraordinary oasis of relaxation. The natural and laidback decorative fabric HIGH LINE does the same for today's modern spaces. It embodies a relaxed sensuality in the form of a very soft flowing fabric in a fine linen blend. The color palette is inspired by nature's tonality with sophisticated yarn mélanges. HIGH LINE is sustainable not only because of its timeless beauty, but because it is made in a Belgian weaving mill from European yarns under CO2-neutral conditions.

OVERVIEW

ZIMMER+ROHDE



10938-882



10938-898

SELECT ALL


NAME High Line
ARTICLE NUMBER 10938
CATEGORY Decoration

FABRIC WIDTH 150 cm

MATERIAL 67% LI, 27% PAN, 6% PES
--

MARTINDALE

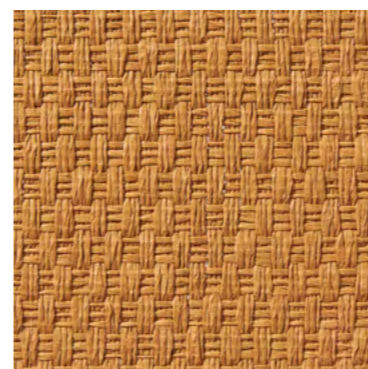
PROPERTIES Regionally Sourced, Resource Efficient Production, Eco Friendly Product
--

CARE INSTRUCTIONS 
--

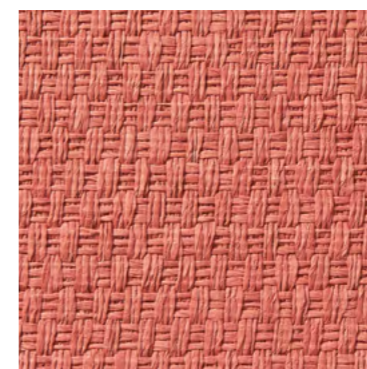


METRO

ZIMMER+ROHDE



10939-186



10939-346



10939-882



10939-900

NAME Metro
ARTICLE NUMBER 10939
CATEGORY Decoration

FABRIC WIDTH 310 cm ↑↓
MATERIAL 100% PES
MARTINDALE

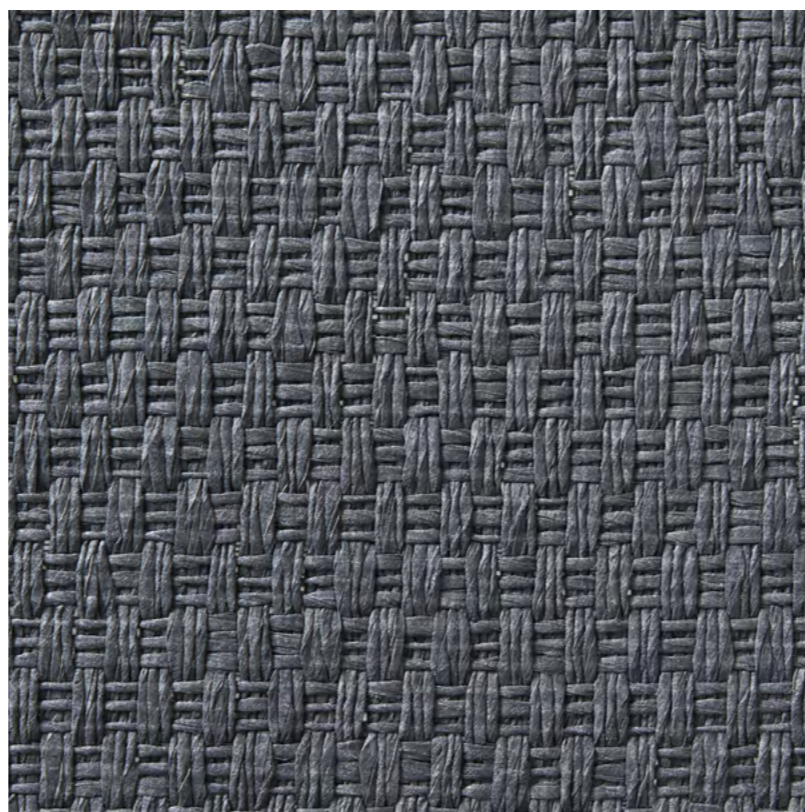
PROPERTIES
CARE INSTRUCTIONS

METRO's special feature lies first and foremost in the material. A special yarn consisting of pleated non-woven strips was developed for the innovative, floor-to-ceiling fabric, which looks like paper but has all the superior qualities of an easy-care textile. The complex jacquard construction was designed to give the fabric the appearance of a loose weave. This imbues METRO with a natural and handcrafted look and feel.

ZIMMER+ROHDE



10939-984



10939-998


SELECT ALL

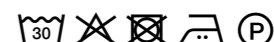
NAME Metro
ARTICLE NUMBER 10939
CATEGORY Decoration

FABRIC WIDTH 310 cm ↑↓

MATERIAL 100% PES

MARTINDALE

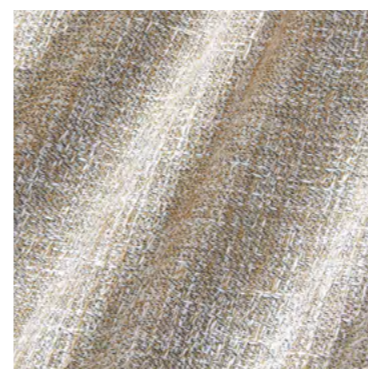
PROPERTIES 

CARE INSTRUCTIONS 
--



VILLE FR

ZIMMER+ROHDE



10940-186



10940-387



10940-557



10940-564

NAME Ville FR
ARTICLE NUMBER 10940
CATEGORY Decoration

FABRIC WIDTH 310 cm ↑↓
MATERIAL 100% PES FR
MARTINDALE

PROPERTIES  
CARE INSTRUCTIONS     

The semi-transparent decorative fabric VILLE FR looks like a natural linen, despite being made of 100% flame retardant polyester. The irregular jacquard structure emphasizes the natural look of the two-tone mélange, in which the finely textured fibers have been spun into yarns with a sophisticated moiré slubbing.

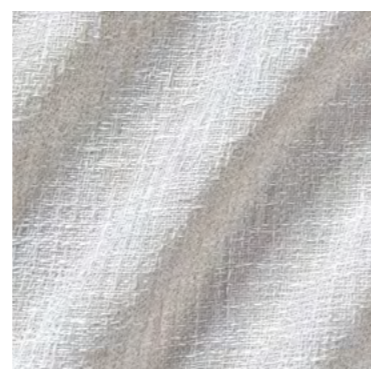
ZIMMER+ROHDE



10940-776



10940-882



10940-883



10940-891



10940-893



10940-897



10940-900



10940-992



10940-997



10940-998

SELECT ALL

NAME Ville FR
ARTICLE NUMBER 10940
CATEGORY Decoration

FABRIC WIDTH 310 cm ↑↓
MATERIAL 100% PES FR
MARTINDALE

PROPERTIES  
CARE INSTRUCTIONS      



SKYLINE FR

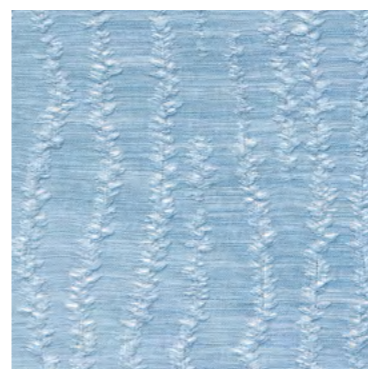
ZIMMER+ROHDE



10941-114



10941-448





10941-565



10941-883

NAME Skyline FR
ARTICLE NUMBER 10941
CATEGORY Decoration

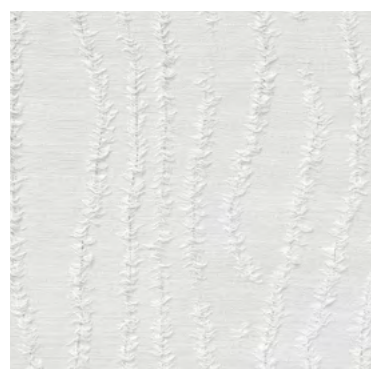
FABRIC WIDTH 285 cm
MATERIAL 100% PES CS
MARTINDALE

PROPERTIES  
CARE INSTRUCTIONS      

The woven relief of the semi-transparent decor fabric SKYLINE FR is light and airy. The contemporary color palette includes versatile neutral as well as intense shades with strong luminosity. SKYLINE FR is made of 100% permanently flame retardant Trevira CS and is therefore equally suitable for use in private and public spaces.

OVERVIEW

ZIMMER+ROHDE



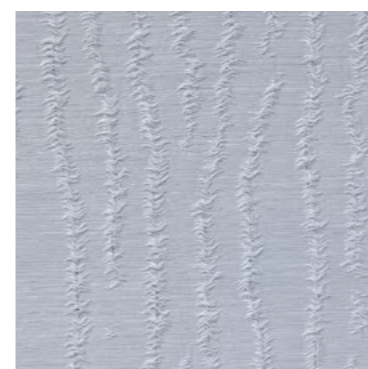
10941-884



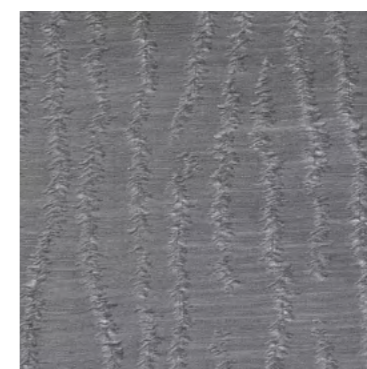
10941-891



10941-900



10941-993



10941-996

SELECT ALL

NAME Skyline FR
ARTICLE NUMBER 10941
CATEGORY Decoration

FABRIC WIDTH 285 cm
MATERIAL 100% PES CS
MARTINDALE

PROPERTIES  
CARE INSTRUCTIONS     



OVERVIEW

NIGHT LIFE FR

ZIMMER+ROHDE



10942-385



10942-497



10942-556



10942-666

NAME Night Life FR
ARTICLE NUMBER 10942
CATEGORY Decoration

FABRIC WIDTH 300 cm ↑↓
MATERIAL 100% PES CS
MARTINDALE

PROPERTIES
CARE INSTRUCTIONS

NIGHT LIFE FR is a natural-looking decorative fabric with a soft flowing drape. Its pleasantly matt surface and lively vertical texture is reminiscent of a natural linen fabric. The reverse side is always black, woven with an extremely high thread count. This allows the remarkable blackout effect of 98%. Made of 100% flame retardant Trevira CS, NIGHT LIFE FR is the right choice for any situation where day needs to be turned into night, whether in private bedrooms, hotel rooms or public lecture halls.



10942-796



10942-895



10942-982



10942-995

SELECT ALL

ZIMMER+ROHDE

NAME Night Life FR
ARTICLE NUMBER 10942
CATEGORY Decoration

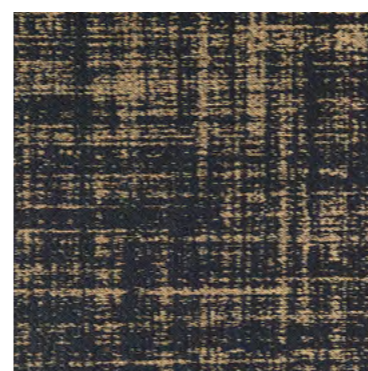
FABRIC WIDTH 300 cm ↑↓
MATERIAL 100% PES CS
MARTINDALE

PROPERTIES
CARE INSTRUCTIONS



OVERNIGHT FR

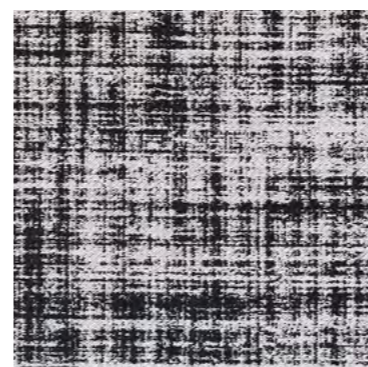
ZIMMER+ROHDE



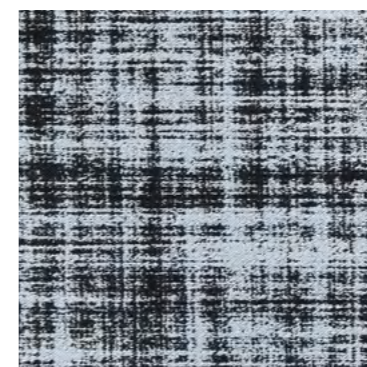
10943-195



10943-395



10943-494



10943-594

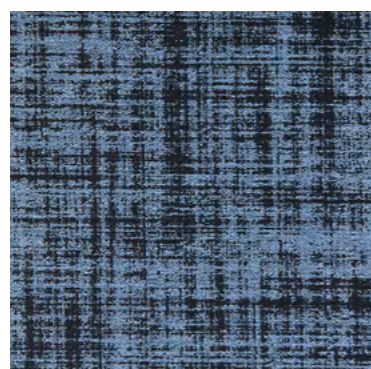
NAME Overnight FR
ARTICLE NUMBER 10943
CATEGORY Decoration

FABRIC WIDTH 300 cm ↑↓
MATERIAL 100% PES CS
MARTINDALE

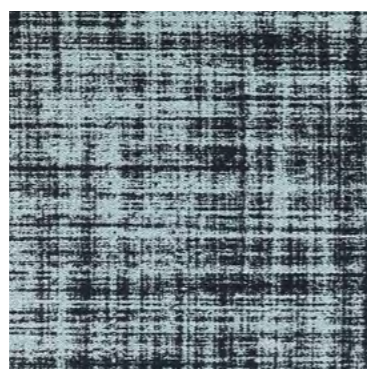
PROPERTIES
CARE INSTRUCTIONS

OVERNIGHT FR impresses first and foremost with its silky sheen and soft flowing drape. The elegantly tactile and graphic jacquard texture can be optimally integrated into the most diverse room concepts. Due to the deliberate double-sided construction of the fabric, there is no reverse side, only an additional choice – one side a little lighter, the other darker. That means that the densely woven blackout fabric can be used not only directly at the window, but can also serve as an excellent room divider, which also benefits the room acoustics. Made of 100% flame retardant Trevira CS, OVERNIGHT FR is equally suited to private or public spaces.

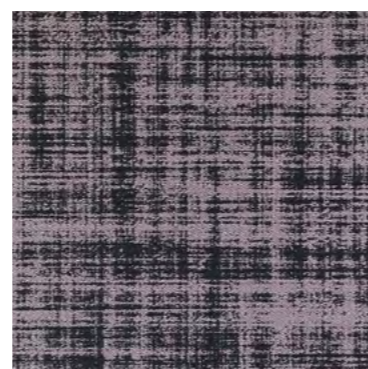
ZIMMER+ROHDE



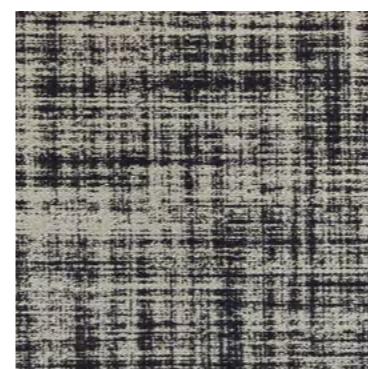
10943-596



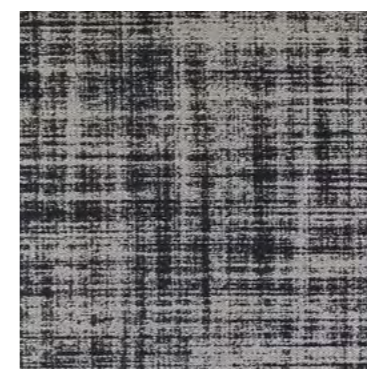
10943-695



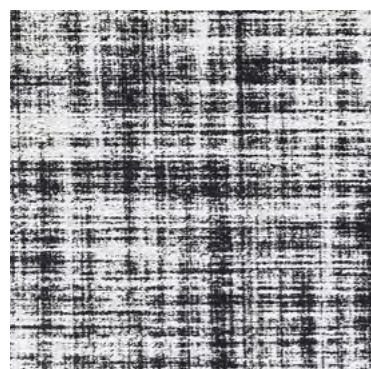
10943-847



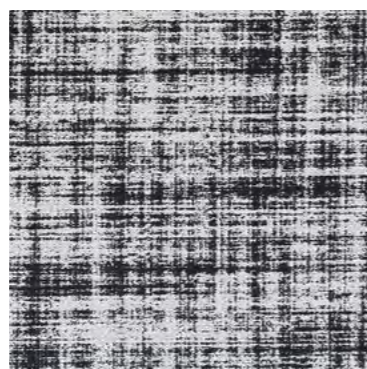
10943-875



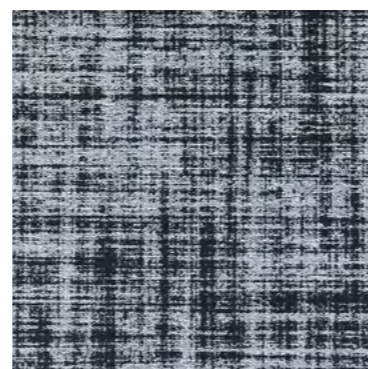
10943-896



10943-993



10943-994



10943-996
SELECT ALL

NAME Overnight FR
ARTICLE NUMBER 10943
CATEGORY Decoration

FABRIC WIDTH 300 cm ↑↓
MATERIAL 100% PES CS
MARTINDALE

PROPERTIES
CARE INSTRUCTIONS

ORDER

COMPANY NAME

CUSTOMER NR

RING-SET (14-01236)

SHIP TO:

STREET

CITY / STATE / ZIP

ANY SPECIAL REQUEST

To submit your request: Please click the **SAVE & SEND** button, the PDF will be automatically attached to your email to us.

OVERVIEW

ZIMMER+ROHDE

IMPRINT

Zimmer + Rohde GmbH
Zimmersmühlenweg 14-18
61440 Oberursel/Frankfurt
Germany

www.zimmer-rohde.com
info@zimmer-rohde.com
Phone +49 (0) 6171 632 02

CEO
Torsten Poschardt

HR Bad Homburg, HRB 5073
Ust-IdNr. DE 812 646 222

SAVE & SEND