



ZR

ZIMMER+ROHDE

*Sketchbook*

  
CLICKBOOK

# Overview

**ZIMMER+ROHDE**

<b>KUBIST</b>	<b>04</b>	<b>INTERSECTIONS</b>	<b>24</b>
<b>SPLENDID MOHAIR</b>	<b>05</b>	<b>SCRIPT</b>	<b>25</b>
<b>MORANDI</b>	<b>07</b>	<b>RANDOM LINES</b>	<b>27</b>
<b>LINTEN</b>	<b>09</b>	<b>GRAFFITI</b>	<b>28</b>
<b>CANVAS</b>	<b>11</b>	<b>GRAND LEAVES</b>	<b>29</b>
<b>UNLIMITED FR</b>	<b>13</b>	<b>COLOUR STUDY</b>	<b>30</b>
<b>SOFTGRID</b>	<b>16</b>	<b>INTUITION</b>	<b>31</b>
<b>SUITE FR</b>	<b>18</b>	<b>SUPERIMPOSITION</b>	<b>32</b>
<b>MAX</b>	<b>21</b>		
<b>PASTELS</b>	<b>22</b>		
<b>LINEARE</b>	<b>23</b>		



## Sketchbook

ZIMMER+ROHDE

Sketchbooks have their own special charm, as they provide an insight into the internal workings of the artistic process. They reveal the process behind design and, according to Goethe, speak directly to the spirit, without intellectually circuitous detours. On the quest for the origins of artistic geniality the sketchbook is its own genre in the art world and the scribbles of major artists are, of course, exhibited alongside their finished works. There are many different types of sketching: the planned formal sketching in a studio, in an artist's workbook, scribbles on a journey in small sketch pads or on loose scraps of paper that fit into a jacket pocket. Sketching nocturnal inspirations on a notepad next to the bed or even the classic white serviette in a restaurant. Taken together they have one thing in common: they immortalize the creative flash of genius. It is this short moment, as well as its myriad manifestations in the shape of dots, lines, bundles of lines, hatching, brush marks and color splotches, spontaneously transferred onto paper, that this collection is dedicated to.

For the artistic designs GRAFFITI, SCRIPT and SUPERIMPOSITION, fine line drawings, scribbles and hatchings were translated into artfully woven and finely embroidered textiles. The spectacular linen print COLOUR STUDY is a textile interpretation of a painterly color study. The material collage COMPILATION was created through lighthearted experiments with weave and Scherli techniques as well as a virtuoso choice of materials. The deliberate use of random principles in the manufacturing process and the combination of print and jacquard fabrics is particularly acute in the two signature designs GRAND LEAVES and KUBIST, which tell of the experimental joy of working with a sketchbook. This ramble through the decorative worlds of a variety of artistic styles is rounded off by extensive monochrome palettes in unadulterated materials like thick-pile mohair velour and relaxed but sophisticated linen satin, all the way down to flattering soft textured mélange fabrics.

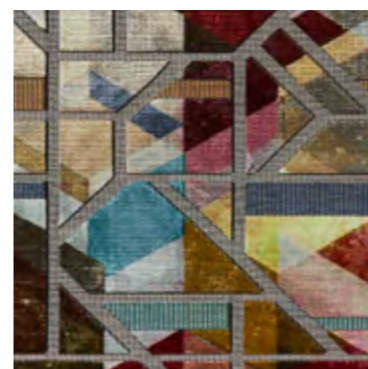
Of all the interior materials we use in our homes, textiles are responsible for the feeling of softness and warmth in the living space. Its appearance varies like no other, depending on the light, the atmosphere and simply due to its inherent liveliness. In this way, the fabric, and therefore the collection, takes on the role in interior space that the sketchbook would in an exhibition. SKETCHBOOK speaks, as Goethe said, directly to the spirit. Have fun sketching and experimenting!



OVERVIEW

# KUBIST

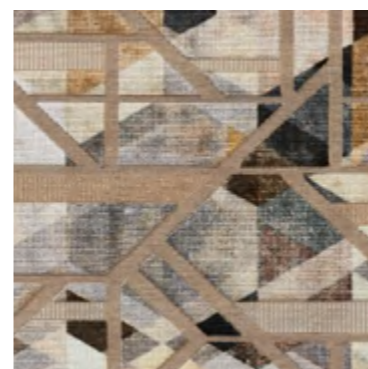
ZIMMER+ROHDE



10912-356



10912-675



10912-894

SELECT ALL\*

NAME <b>Kubist</b>
ARTICLE NUMBER <b>10912</b>
CATEGORY <b>Upholstery Decoration</b>

FABRIC WIDTH <b>154 cm</b>
MATERIAL <b>Ground: 100% PES Pile: 100% CV</b>
MARTINDALE <b>80.000</b>

PROPERTIES
CARE INSTRUCTIONS 

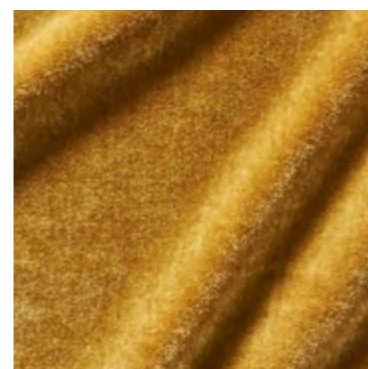
Many artists are guided by the inspiration of randomness for their works. This decorative jacquard velour plays with the seemingly random combination of color fields and geometry. A dazzling print composed of countless small polygonal fields is overlaid on the clear grid of the geometric jacquard design. Since the two patterns are created in two separate production steps, the print motif and fabric overlap in changing formations, making KUBIST an attractive eye-catcher on upholstery as well as when used as decorative curtain fabric. KUBIST is climate neutral and manufactured in Germany. The yarns are all sourced in Europe.

\* By selecting this button you receive all colorways of this article.

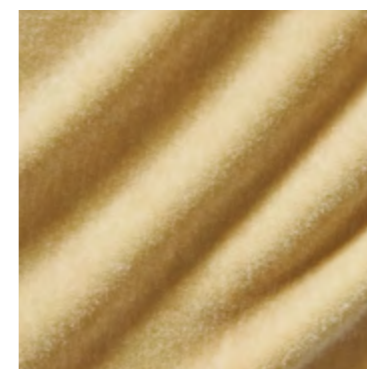


## SPLENDID MOHAIR

ZIMMER+ROHDE



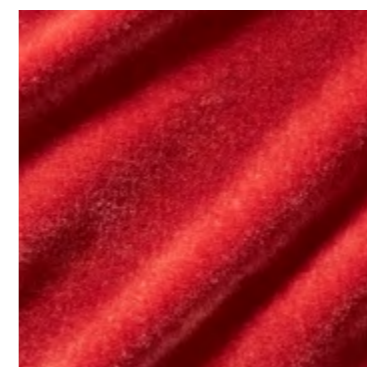
10913-115



10913-193



10913-325



10913-335

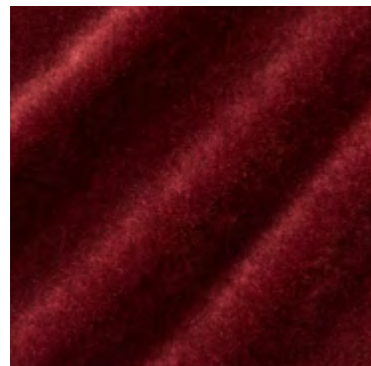
NAME <b>Splendid Mohair</b>
ARTICLE NUMBER <b>10913</b>
CATEGORY <b>Upholstery</b>

FABRIC WIDTH <b>140 cm</b>
MATERIAL <b>Ground: 100% CO Pile: 100% WM</b>
MARTINDALE <b>100.000</b>

PROPERTIES
CARE INSTRUCTIONS 

Angora goat hair is one of the most precious and at the same time durable materials from which you can weave a velour fabric. The precious wool also has additional special features: Mohair is extremely fine and silky, light and durable, wrinkle-resistant, water-repellent and at the same time moisture-absorbent. It is cooling in summer and warming in winter. As with silk or linen, this unique natural material reflects colors in a very special way. Each individual shade develops its own extraordinary depth and dimension. SPLENDID MOHAIR will enchant you with an extraordinary color palette ranging from elegant and restrained to intensely luminous.

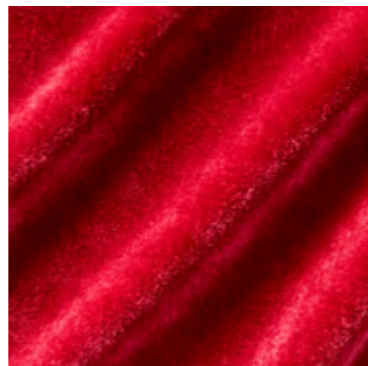
OVERVIEW



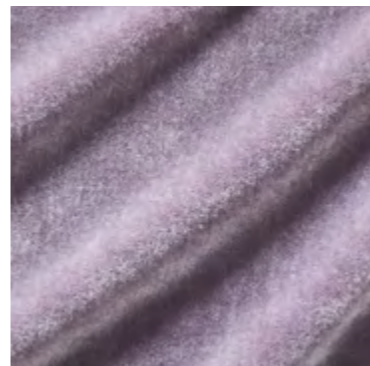
10913-357



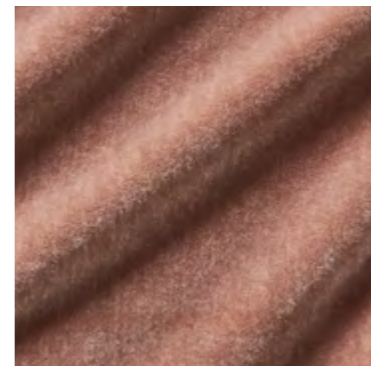
10913-385



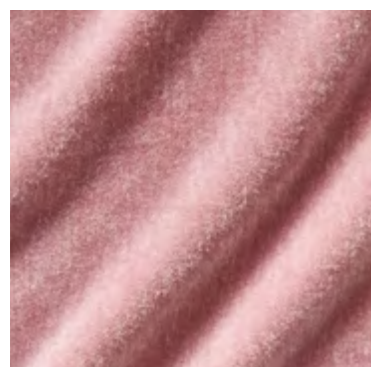
10913-435



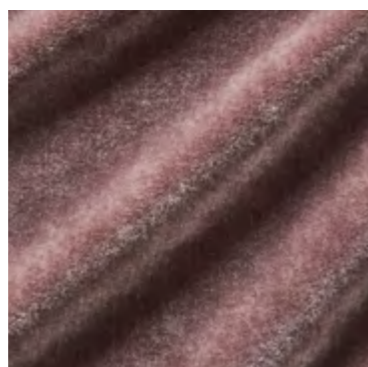
10913-445



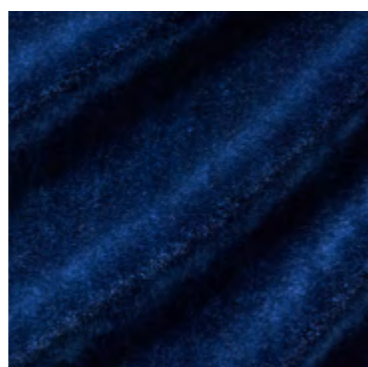
10913-484



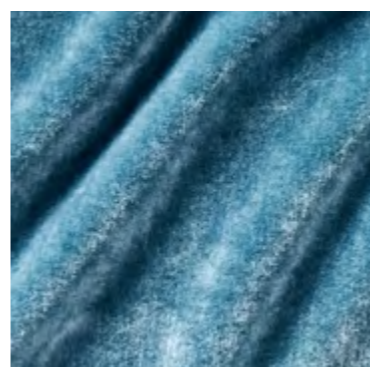
10913-493



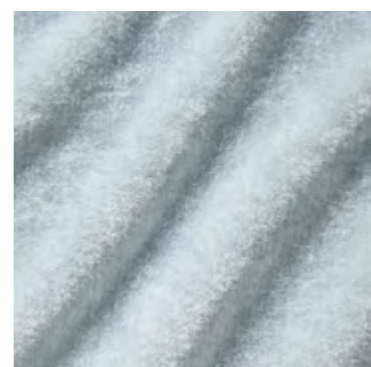
10913-496



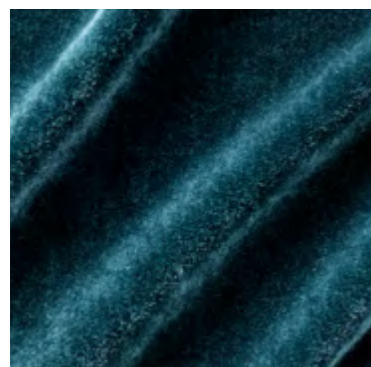
10913-557



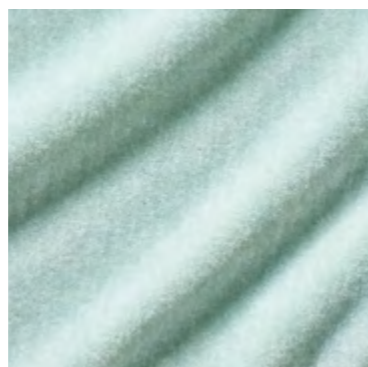
10913-566



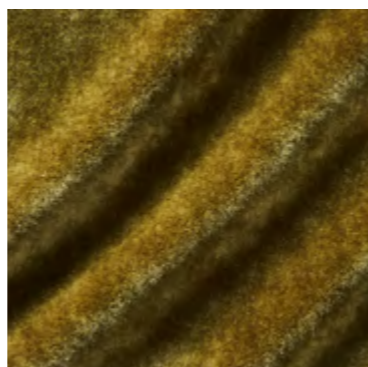
10913-593



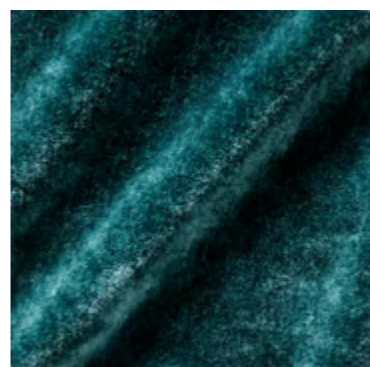
10913-667



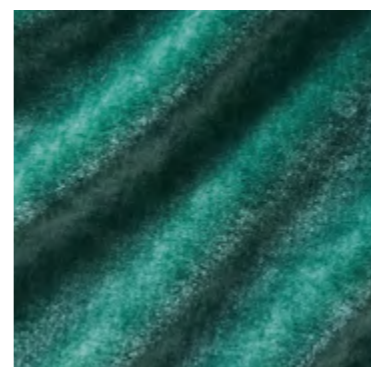
10913-673



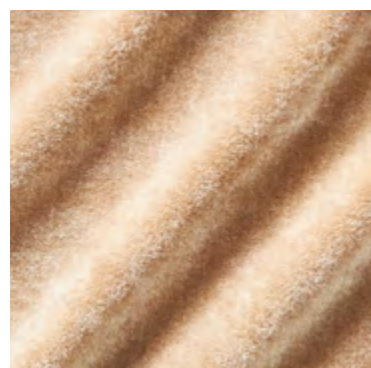
10913-716



10913-766



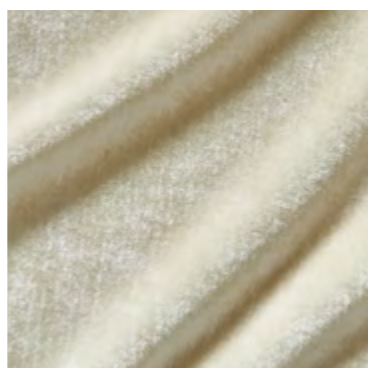
10913-775



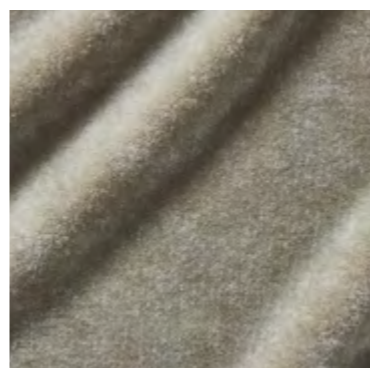
10913-813



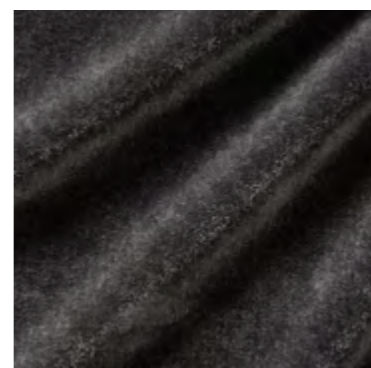
10913-886



10913-991



10913-994



10913-997

**ZIMMER+ROHDE**

NAME <b>Splendid Mohair</b>
ARTICLE NUMBER <b>10913</b>
CATEGORY <b>Upholstery</b>

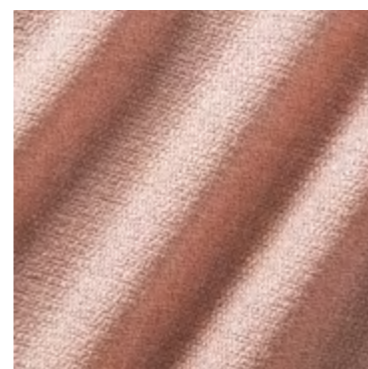
FABRIC WIDTH <b>140 cm</b>
MATERIAL <b>Ground: 100% CO</b> <b>Pile: 100% WM</b>
MARTINDALE <b>100.000</b>

PROPERTIES
CARE INSTRUCTIONS 

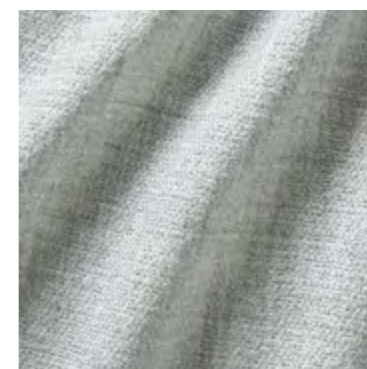
SELECT ALL



# MORANDI



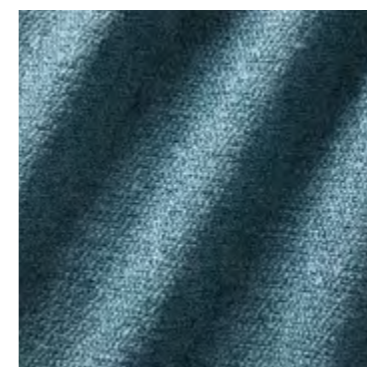
10914-445



10914-593



10914-595



10914-657

OVERVIEW

ZIMMER+ROHDE

NAME <b>Morandi</b>
ARTICLE NUMBER <b>10914</b>
CATEGORY <b>Decoration</b>

FABRIC WIDTH <b>300 cm</b> ↑↓
MATERIAL <b>90% PAN, 10% PES</b>
MARTINDALE

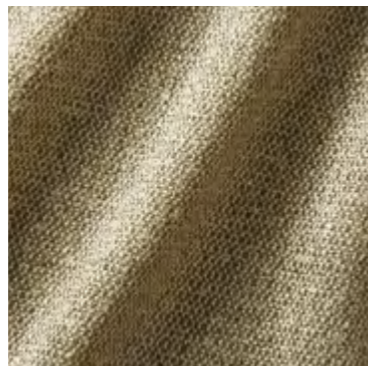
PROPERTIES  
CARE INSTRUCTIONS     

The mellow color palette of the eponymous artist, who became famous for his reduced and, at the same time, extremely sensual still lifes, was the inspiration for the 22 colorways of this semi-transparent decorative fabric. The wool-like, matte texture of the surface lends a high degree of warmth to any interior, whether as a window treatment or as a decorative room divider.

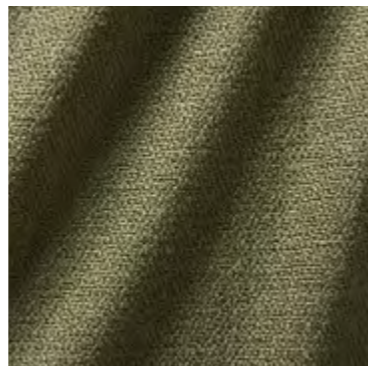
OVERVIEW



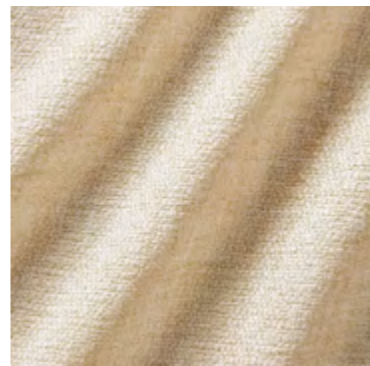
10914-765



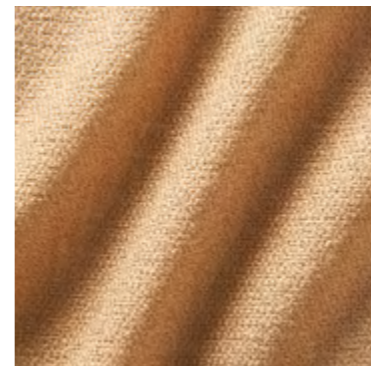
10914-786



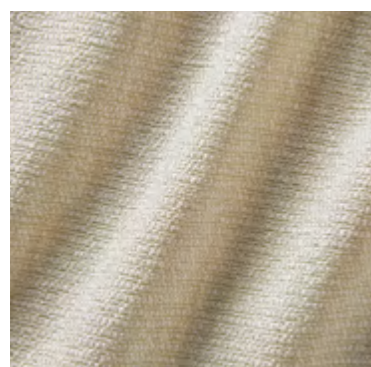
10914-797



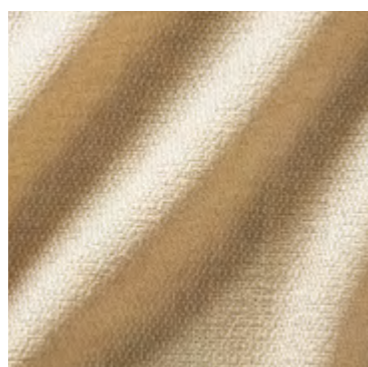
10914-813



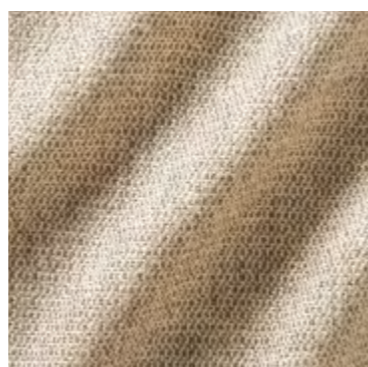
10914-825



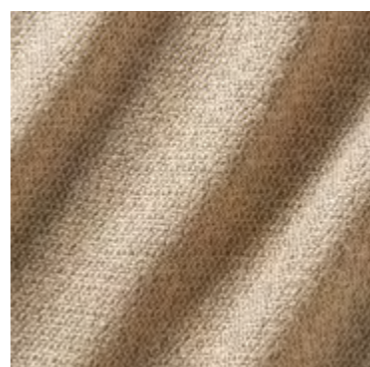
10914-882



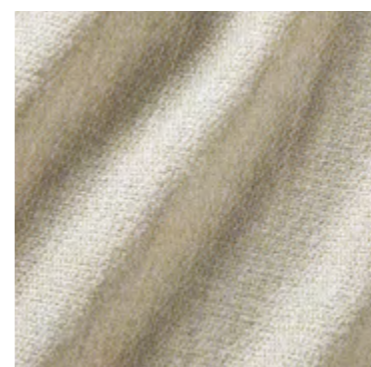
10914-884



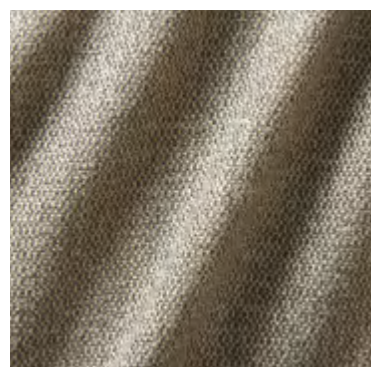
10914-885



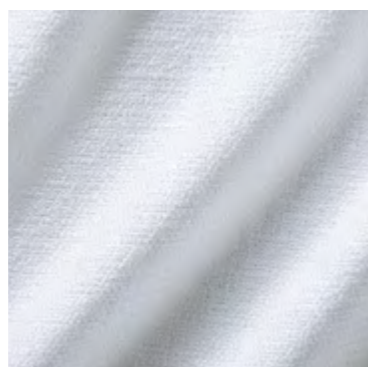
10914-886



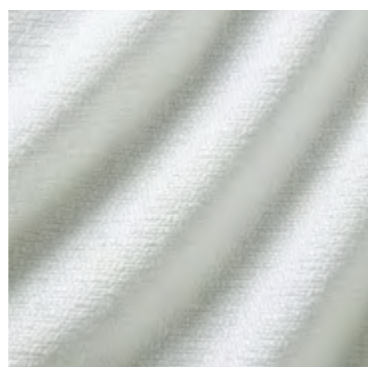
10914-894



10914-896



10914-900



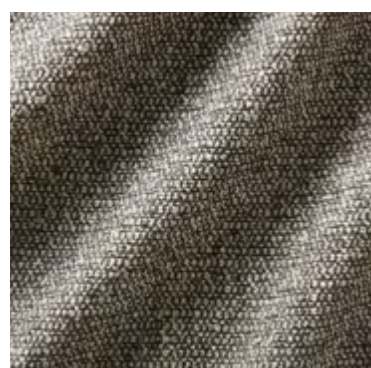
10914-991



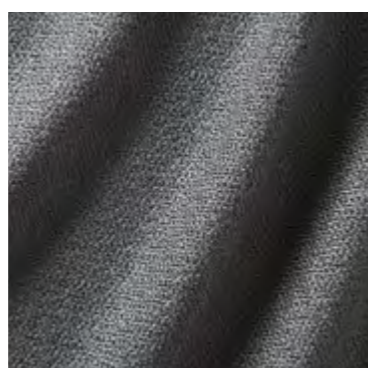
10914-992



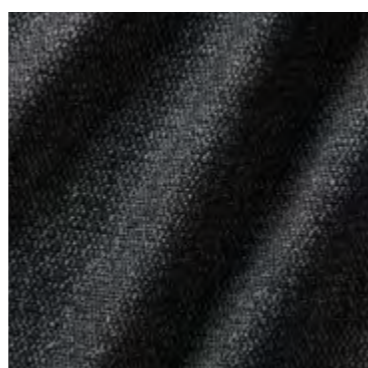
10914-995



10914-996



10914-997




10914-999

SELECT ALL

**ZIMMER+ROHDE**

NAME <b>Morandi</b>
ARTICLE NUMBER <b>10914</b>
CATEGORY <b>Decoration</b>

FABRIC WIDTH <b>300 cm</b> ↑↓
MATERIAL <b>90% PAN, 10% PES</b>
MARTINDALE

PROPERTIES  
CARE INSTRUCTIONS     





# LINTEN

ZIMMER+ROHDE



10915-174



10915-224










10915-555



10915-592

NAME <b>Linten</b>
ARTICLE NUMBER <b>10915</b>
CATEGORY <b>Sheers</b>

FABRIC WIDTH <b>320 cm</b> ↑↓
MATERIAL <b>100% LI</b>
MARTINDALE

PROPERTIES <b>Hand wash cold</b> 
CARE INSTRUCTIONS      

Two-tone woven linen satin LINTEN reflects the beauty of the natural material with its balanced color palette of soft chalk tones. In addition, the pleasant touch and soft drape also emphasize the casual, natural character of this fabric. This fabric is made of 100% European linen and was manufactured in Italy.



10915-694



10915-785



10915-796



10915-823



10915-882



10915-900



10915-980



10915-984



10915-991



10915-992



10915-996







SELECT ALL

OVERVIEW

**ZIMMER+ROHDE**

NAME <b>Linten</b>
ARTICLE NUMBER <b>10915</b>
CATEGORY <b>Sheers</b>

FABRIC WIDTH <b>320 cm</b> ↑↓
MATERIAL <b>100% LI</b>
MARTINDALE

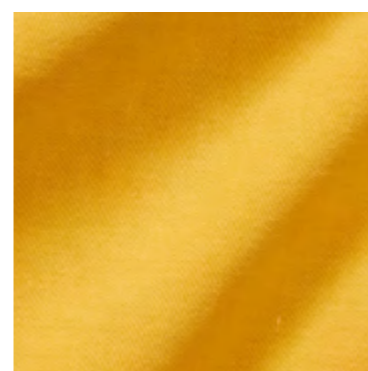
PROPERTIES <b>Hand wash cold</b> 
CARE INSTRUCTIONS     



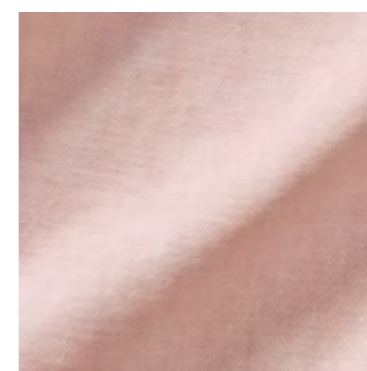
OVERVIEW

# CANVAS

ZIMMER+ROHDE



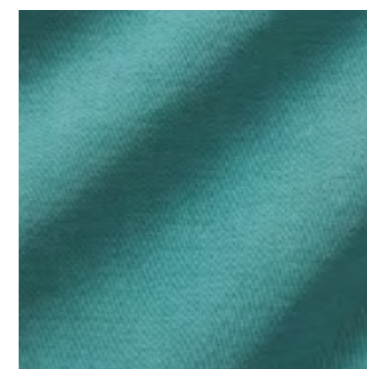
10916-115



10916-483



10916-566



10916-677

NAME <b>Canvas</b>
ARTICLE NUMBER <b>10916</b>
CATEGORY <b>Decoration</b>

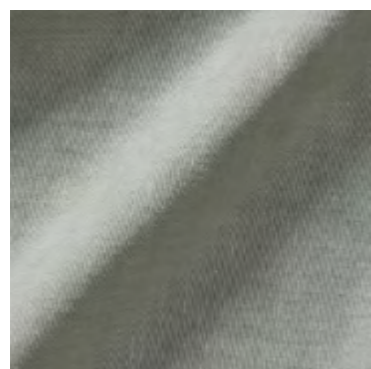
FABRIC WIDTH <b>300 cm</b> ↑↓
MATERIAL <b>70% CO, 30% LI</b>
MARTINDALE

PROPERTIES 
CARE INSTRUCTIONS     

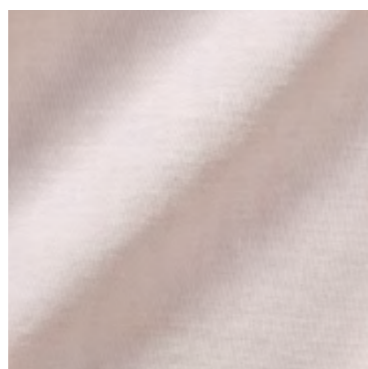
The inspiration for this opaque taffeta fabric was the pristine canvas of an artist, just before the first brushstroke touches the surface. Whether in white or one of nine other refreshing color variations, this decorative fabric emphasizes the clean design vocabulary of modern interiors. The material blend of finest cotton yarn and naturally textured linen adds a lively texture to the fabric surface, giving CANVAS a contemporary feel.

OVERVIEW

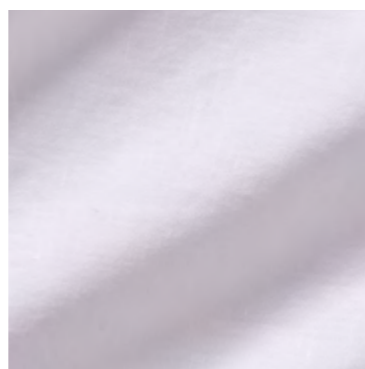
**ZIMMER+ROHDE**



10916-785



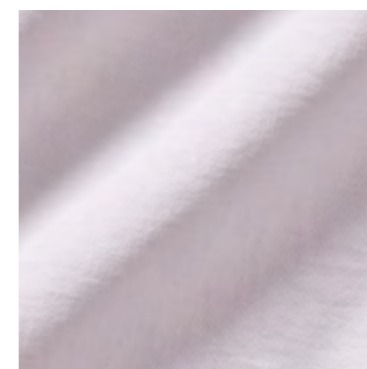
10916-882



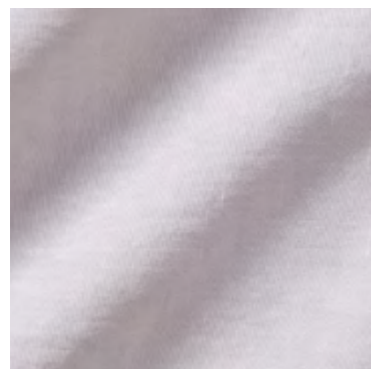
10916-900



10916-987



10916-991



10916-992

SELECT ALL

NAME <b>Canvas</b>
ARTICLE NUMBER <b>10916</b>
CATEGORY <b>Decoration</b>

FABRIC WIDTH <b>300 cm</b> ↑↓
MATERIAL <b>70% CO, 30% LI</b>
MARTINDALE

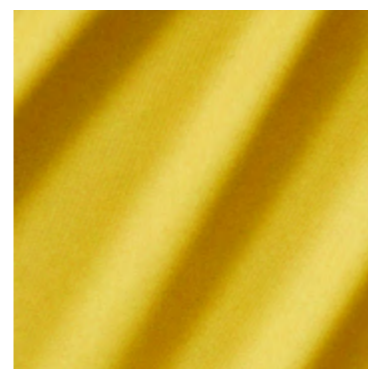
PROPERTIES 
CARE INSTRUCTIONS     



OVERVIEW

## UNLIMITED FR

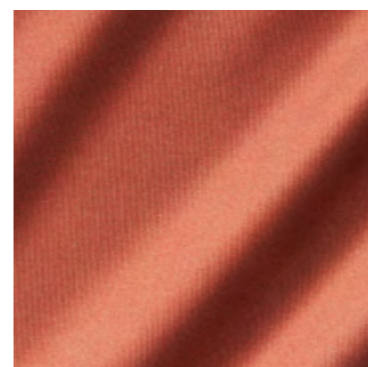
ZIMMER+ROHDE



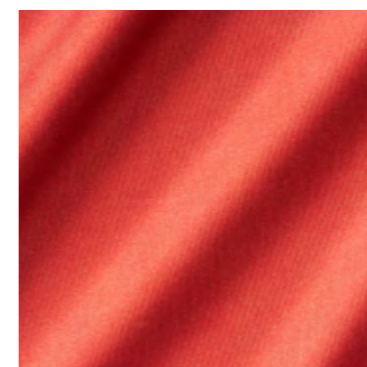
10917-114



10917-175



10917-285



10917-325

NAME <b>Unlimited FR</b>
ARTICLE NUMBER <b>10917</b>
CATEGORY <b>Decoration</b>

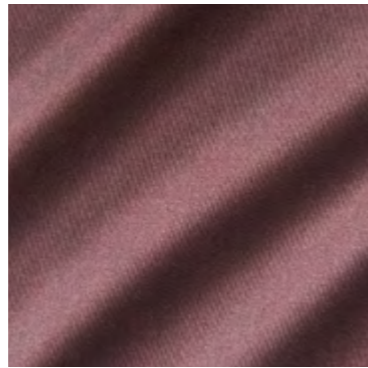
FABRIC WIDTH <b>290 cm</b> ↑↓
MATERIAL <b>72% PAN, 28% PES, Backing: 100% PES</b>
MARTINDALE

PROPERTIES 
CARE INSTRUCTIONS 

The options are endless when it comes to combining the 30 colorways of this exceptionally soft flowing blackout fabric, which can darken rooms up to 100% thanks to the coating on its reverse. In addition, there's also the option of ordering any desired special color, texture or design for individual furnishing projects in private as well as public spaces.



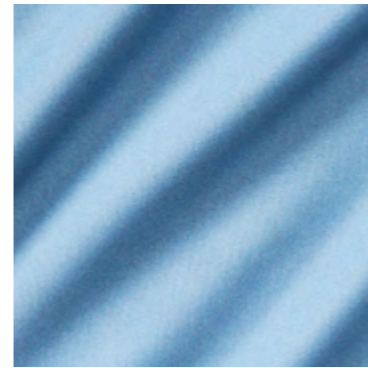
10917-336



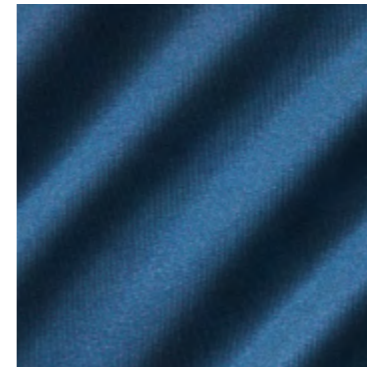
10917-488



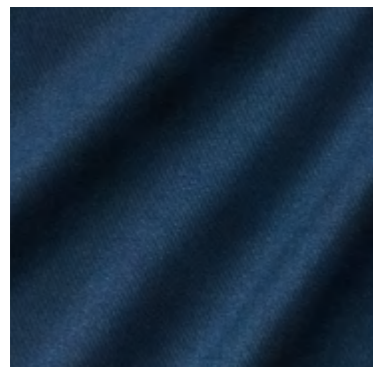
10917-495



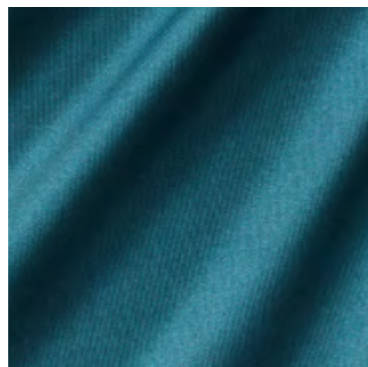
10917-555



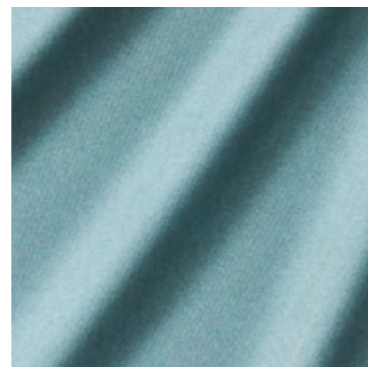
10917-558



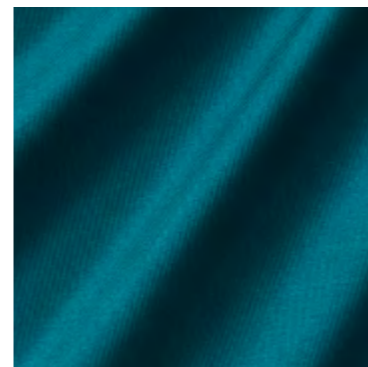
10917-598



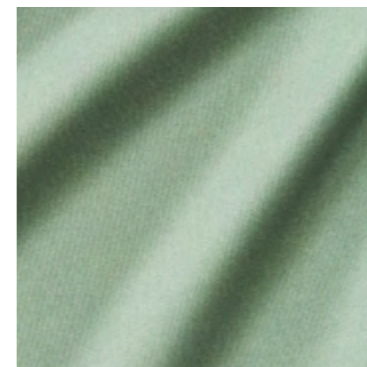
10917-657



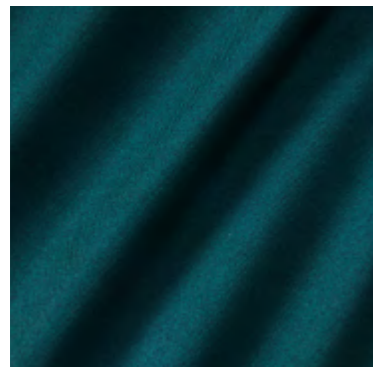
10917-665



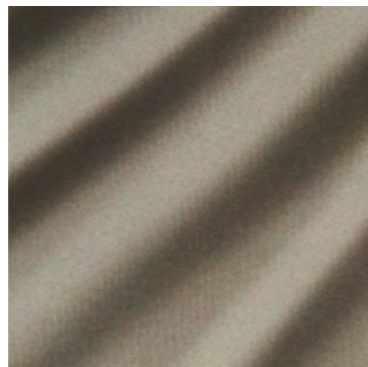
10917-666



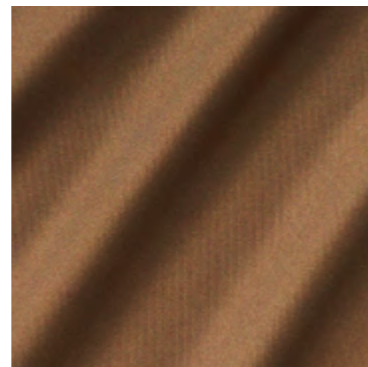
10917-775



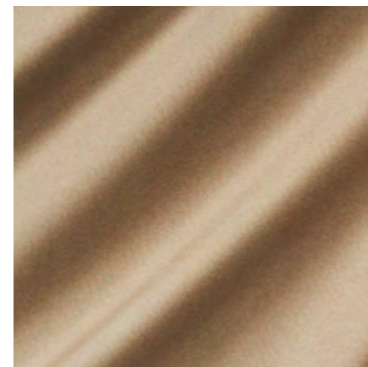
10917-778



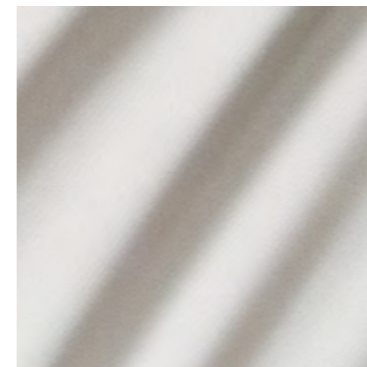
10917-786



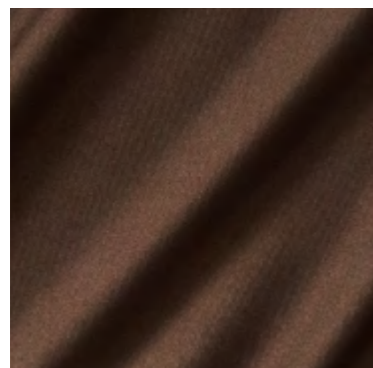
10917-817



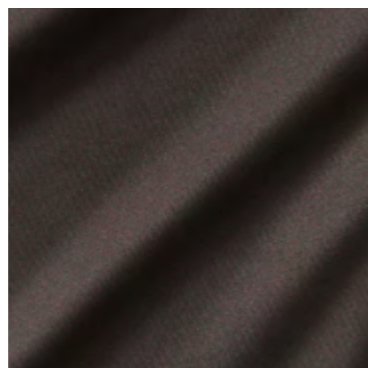
10917-875



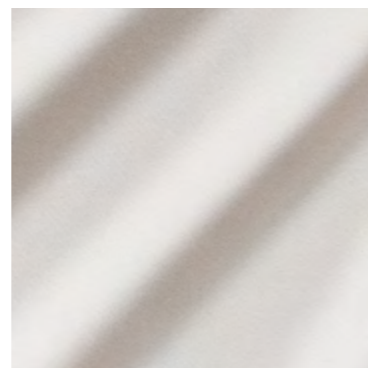
10917-882



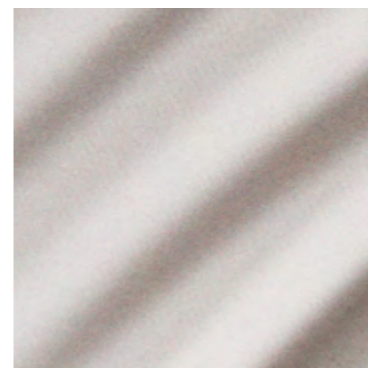
10917-887



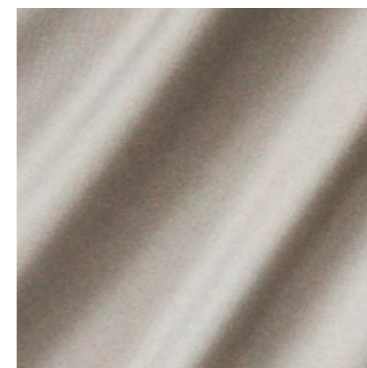
10917-888



10917-892



10917-894



10917-895

OVERVIEW

ZIMMER+ROHDE

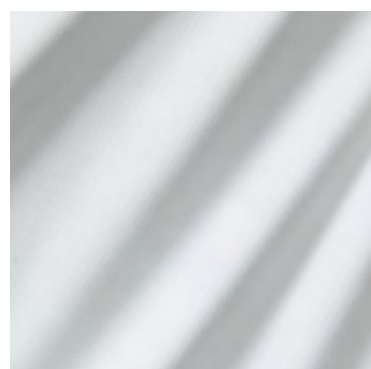
NAME <b>Unlimited FR</b>
ARTICLE NUMBER <b>10917</b>
CATEGORY <b>Decoration</b>

FABRIC WIDTH <b>290 cm</b> ↑↓
MATERIAL <b>72% PAN, 28% PES, Backing: 100% PES</b>
MARTINDALE

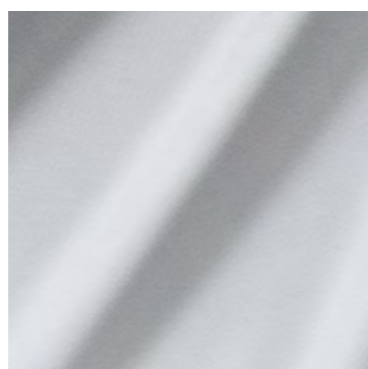
PROPERTIES   
CARE INSTRUCTIONS     

OVERVIEW

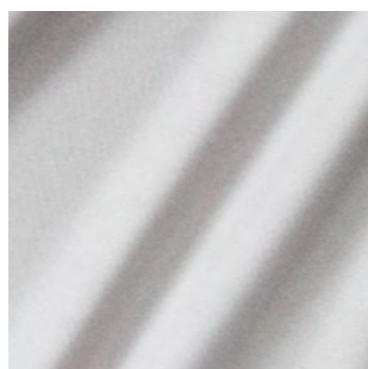
**ZIMMER+ROHDE**



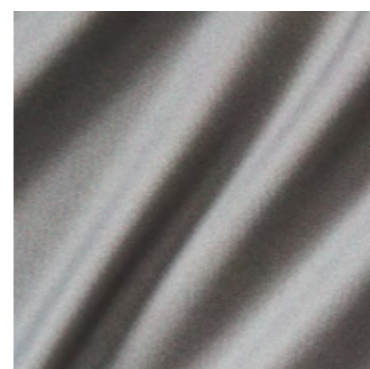
10917-900



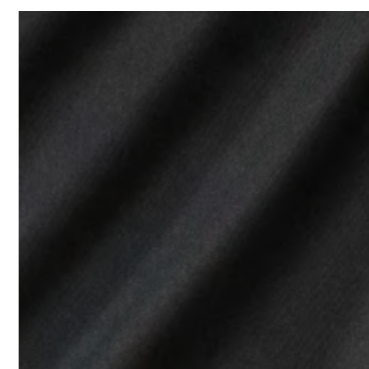
10917-991



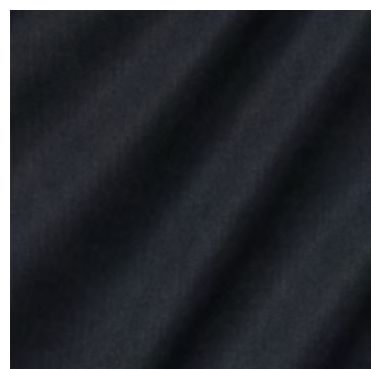
10917-992



10917-997



10917-998



10917-999

SELECT ALL

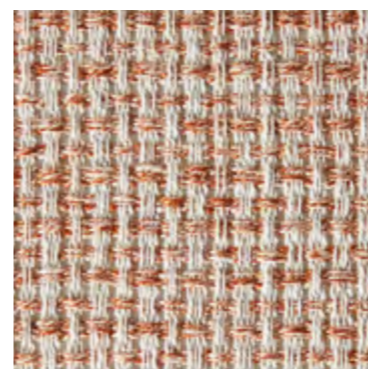
NAME <b>Unlimited FR</b>
ARTICLE NUMBER <b>10917</b>
CATEGORY <b>Decoration</b>

FABRIC WIDTH <b>290 cm</b> ↑↓
MATERIAL <b>72% PAN, 28% PES, Backing: 100% PES</b>
MARTINDALE

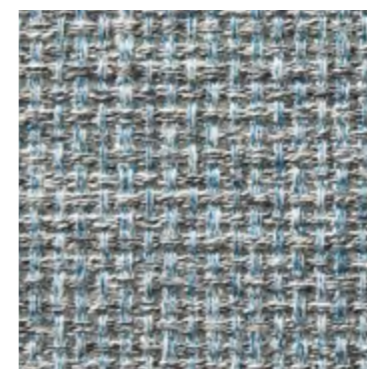
PROPERTIES   
CARE INSTRUCTIONS     



## SOFTGRID



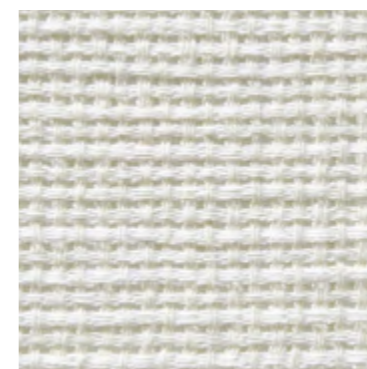
10918-294



10918-595



10918-694


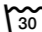






10918-890

ZIMMER+ROHDE

NAME <b>Softgrid</b>
ARTICLE NUMBER <b>10918</b>
CATEGORY <b>Sheers</b>

FABRIC WIDTH <b>300 cm</b> ↑↓
MATERIAL <b>36% PES, 34% CO, 16% CV, 14% LI</b>
MARTINDALE

PROPERTIES <b>Recommend puddle on the floor</b> 
CARE INSTRUCTIONS     

Softly twisted mélange yarns combine in SOFTGRID to create an expressive woven lattice with a vibrant color effect. The floor-length 'inbetween' curtain combines volume and transparency in equal measure. The open texture and the associated soft drape convey a laid-back cozy feel.



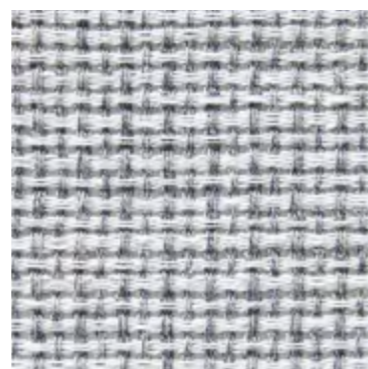
**ZIMMER+ROHDE**



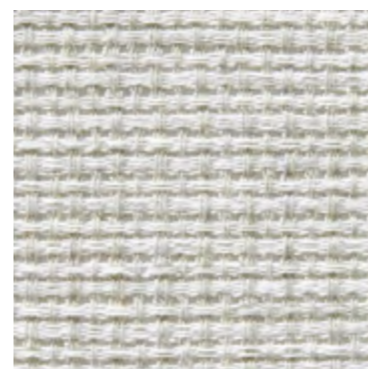
10918-895



10918-900



10918-953



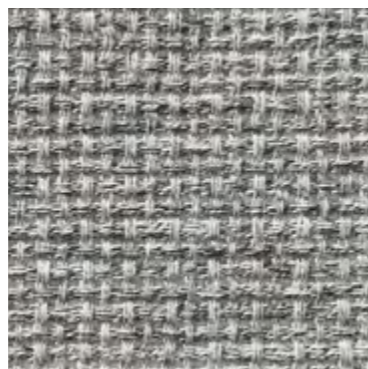
10918-981



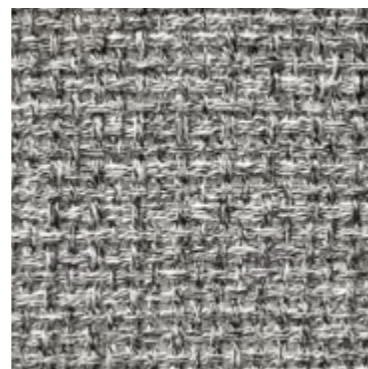
10918-984



10918-991



10918-995









10918-997

SELECT ALL

NAME <b>Softgrid</b>
ARTICLE NUMBER <b>10918</b>
CATEGORY <b>Sheers</b>

FABRIC WIDTH <b>300 cm</b> ↑↓
MATERIAL <b>36% PES, 34% CO, 16% CV, 14% LI</b>
MARTINDALE

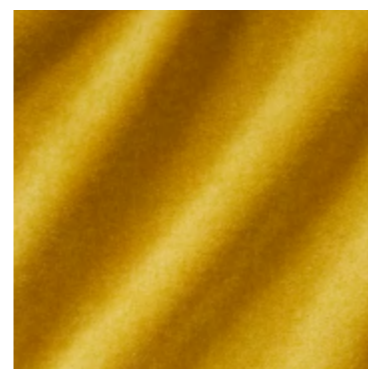
PROPERTIES <b>Recommend puddle on the floor</b> 
CARE INSTRUCTIONS     



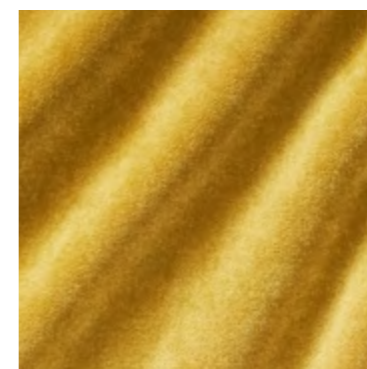
OVERVIEW

# SUITE FR

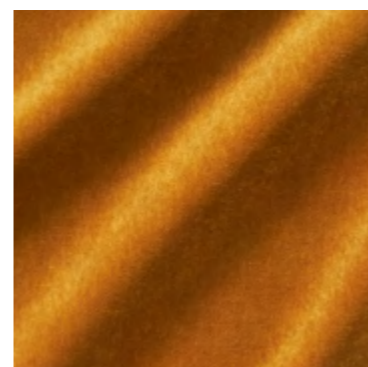
ZIMMER+ROHDE



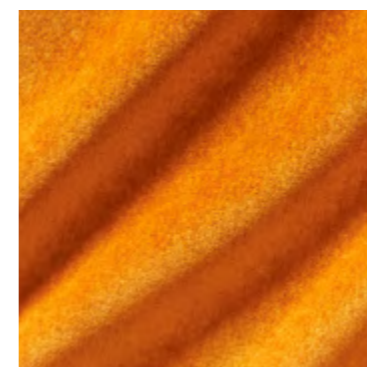
10919-113



10919-124



10919-215



10919-225

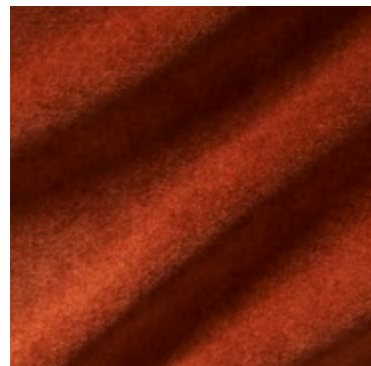
NAME <b>Suite FR</b>
ARTICLE NUMBER <b>10919</b>
CATEGORY <b>Upholstery</b>

FABRIC WIDTH <b>140 cm</b>
MATERIAL <b>Ground: 100% PES FR Pile: 100% PES FR</b>
MARTINDALE <b>50.000</b>

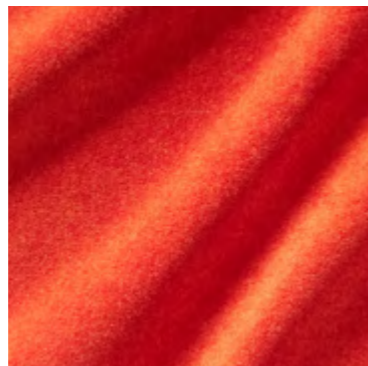
PROPERTIES 
CARE INSTRUCTIONS 

The versatile monochrome velour SUITE FR, impresses above all with its silky-matt luster and an extensive color palette. 40 carefully selected colorways will steal the show in every conceivable furnishing situation, whether as an upholstery fabric, window drapes, wall covering or room divider, transforming every room into an elegant oasis of color.

OVERVIEW



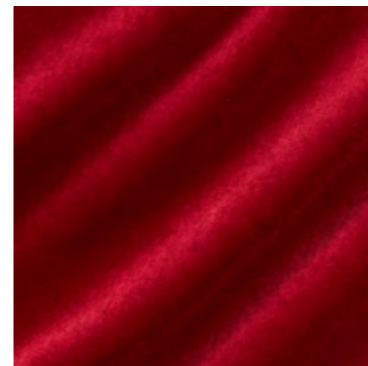
10919-226



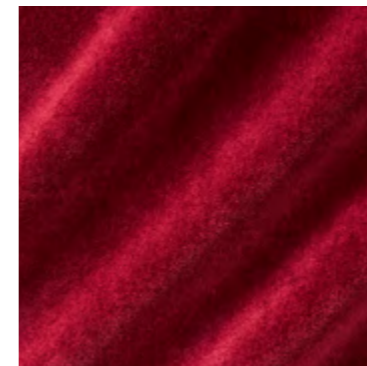
10919-235



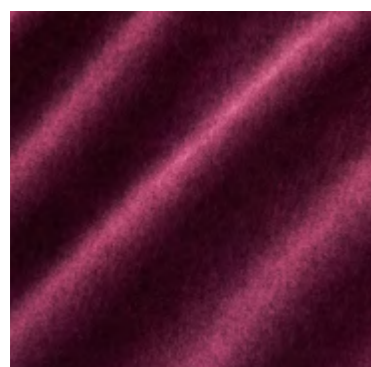
10919-335



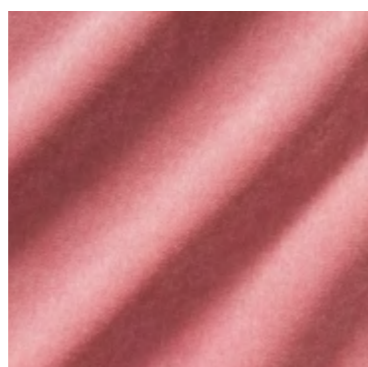
10919-336



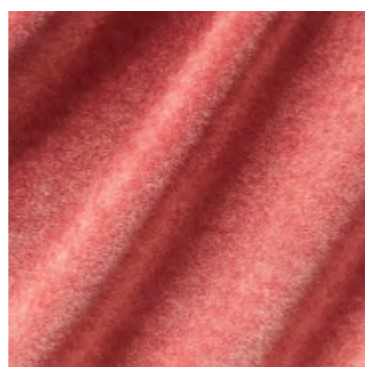
10919-347



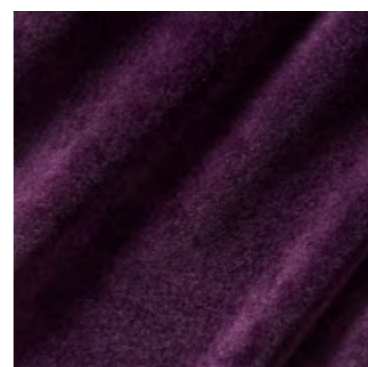
10919-437



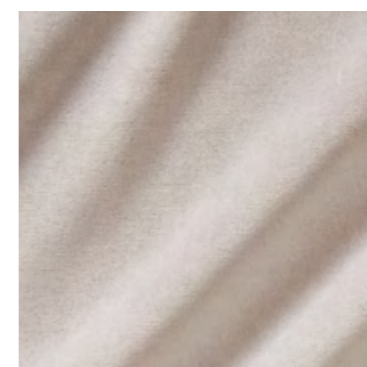
10919-444



10919-445



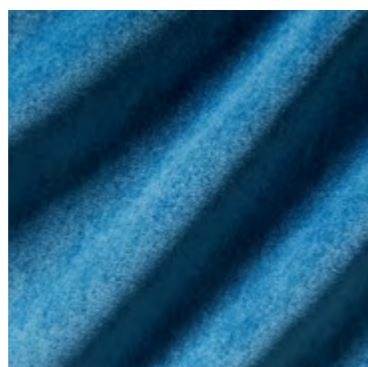
10919-448



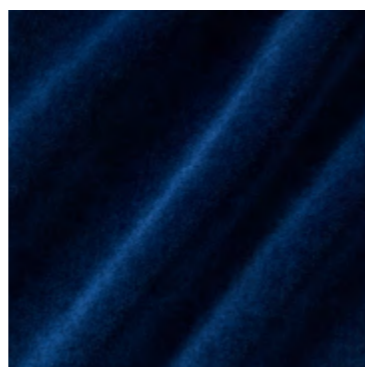
10919-483



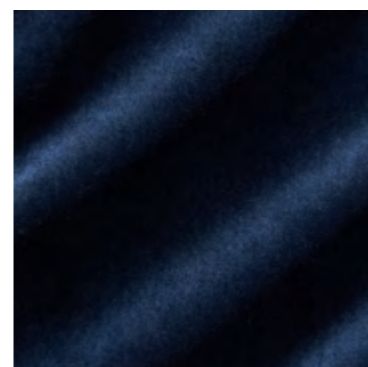
10919-554



10919-556



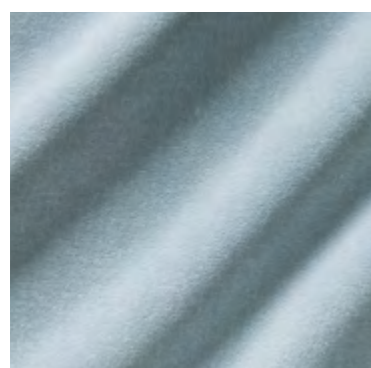
10919-557



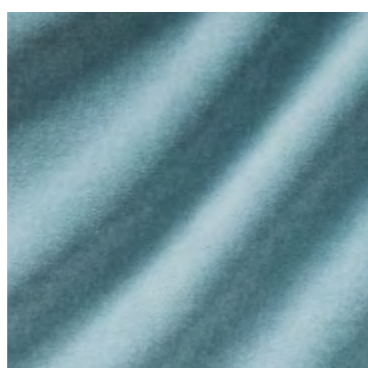
10919-559



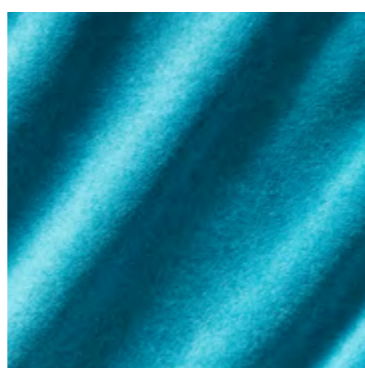
10919-565



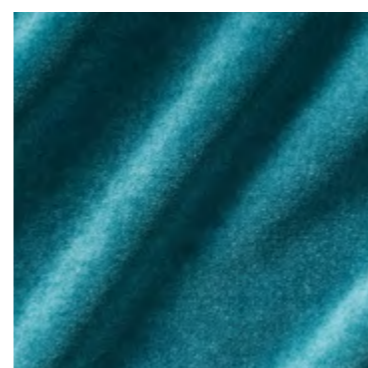
10919-663



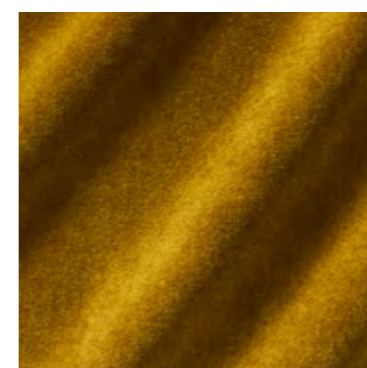
10919-664



10919-665





10919-666



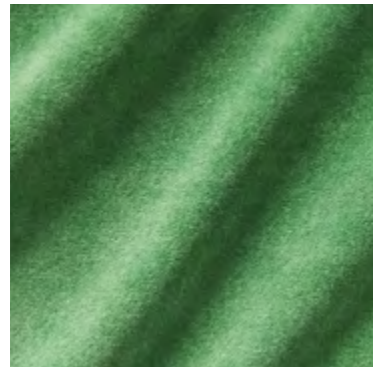
10919-716

NAME <b>Suite FR</b>
ARTICLE NUMBER <b>10919</b>
CATEGORY <b>Upholstery</b>

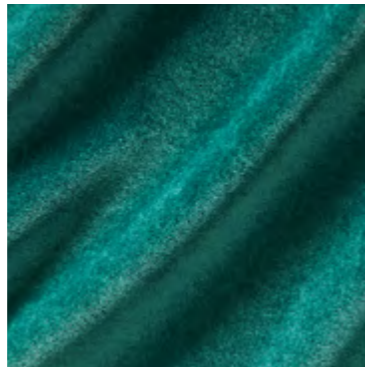
FABRIC WIDTH <b>140 cm</b>
MATERIAL <b>Ground: 100% PES FR Pile: 100% PES FR</b>
MARTINDALE <b>50.000</b>

PROPERTIES 
CARE INSTRUCTIONS     

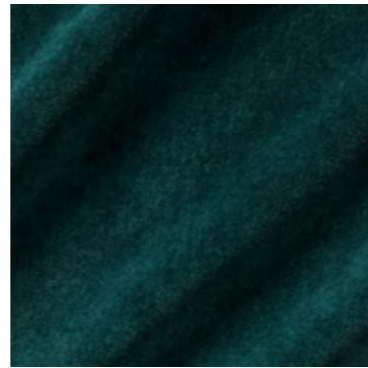
--



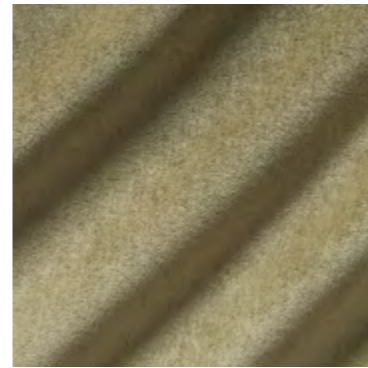
10919-775



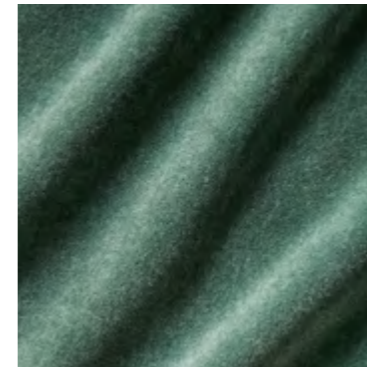
10919-776



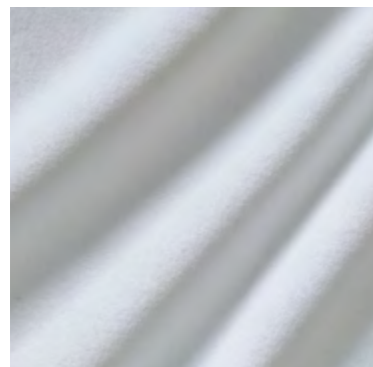
10919-778



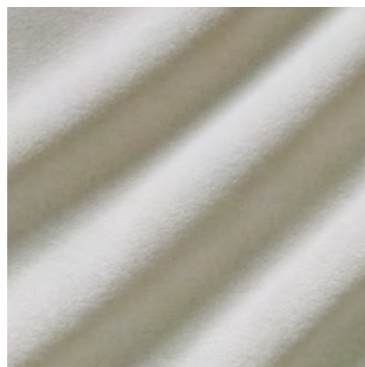
10919-784



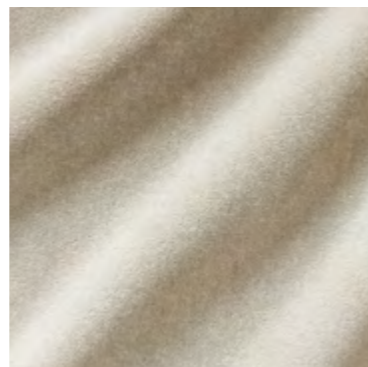
10919-787



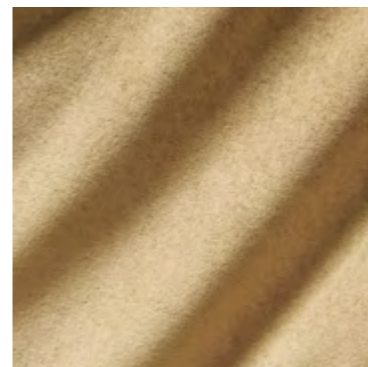
10919-800



10919-881



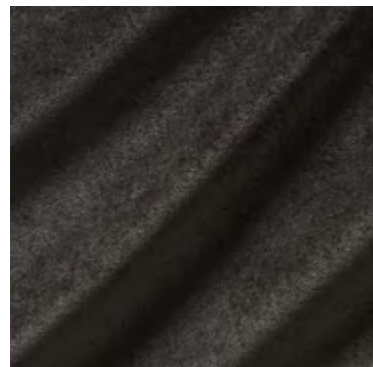
10919-884



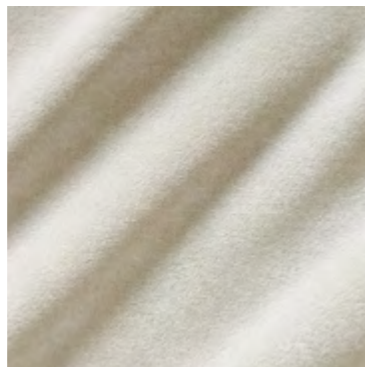
10919-885



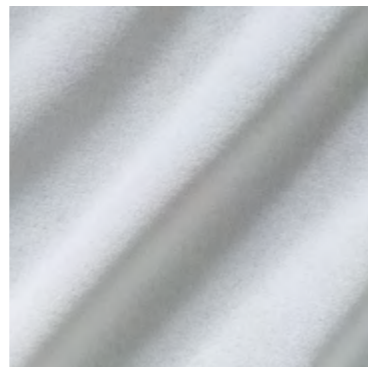
10919-886



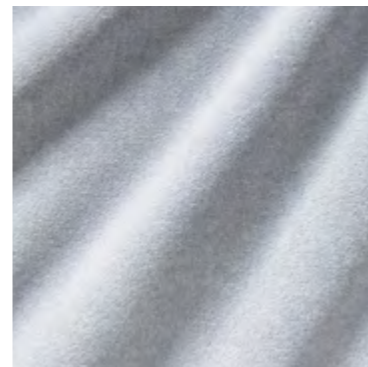
10919-888



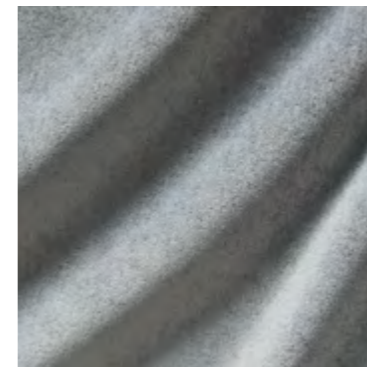
10919-893



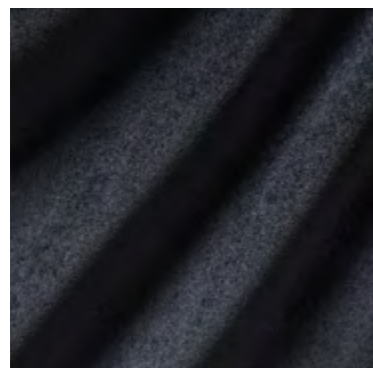
10919-992



10919-994



10919-997



10919-999





SELECT ALL

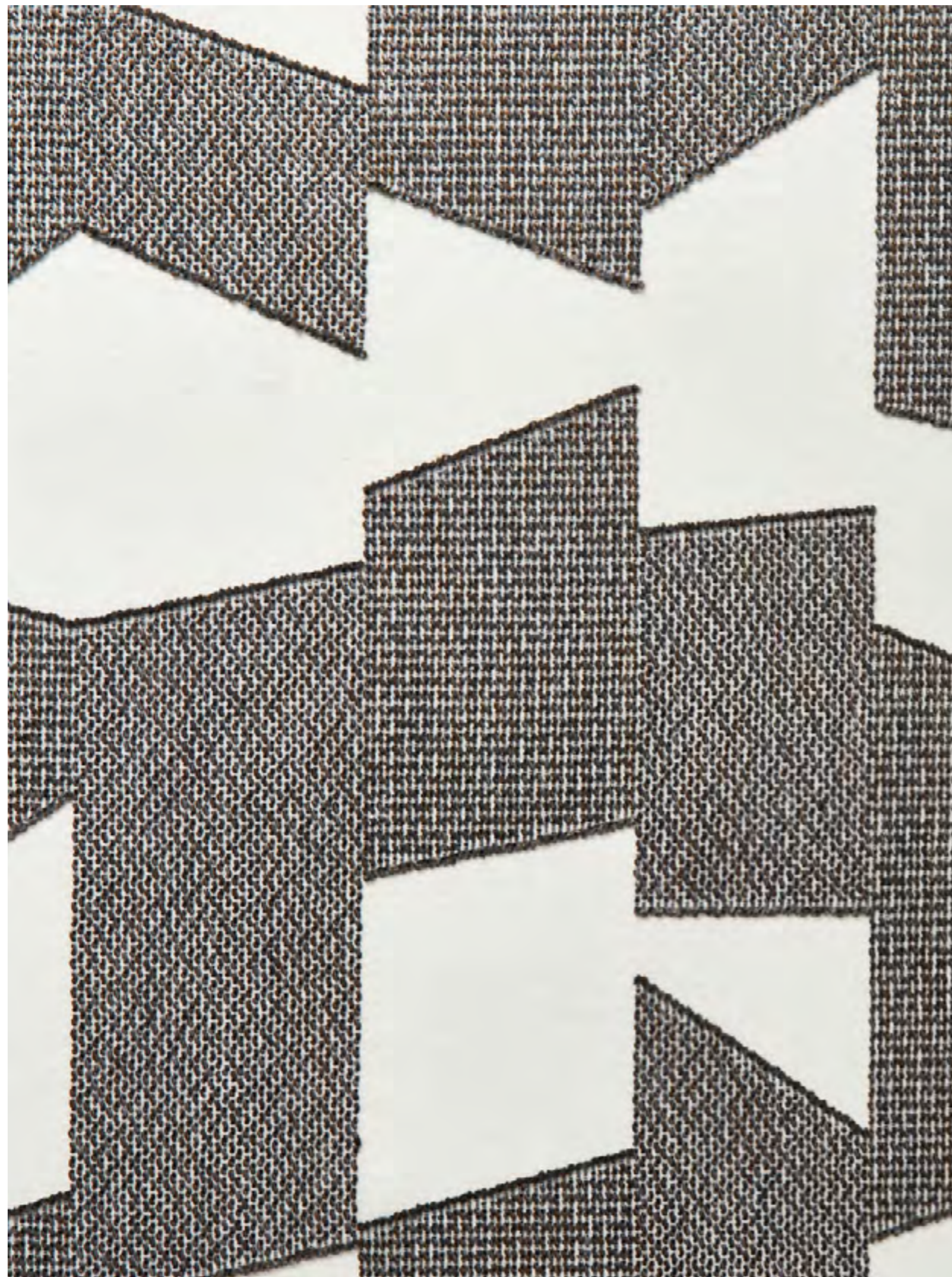
OVERVIEW

**ZIMMER+ROHDE**

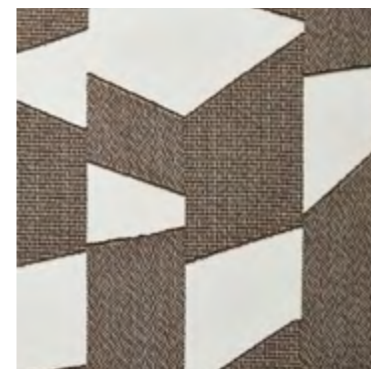
NAME <b>Suite FR</b>
ARTICLE NUMBER <b>10919</b>
CATEGORY <b>Upholstery</b>

FABRIC WIDTH <b>140 cm</b>
MATERIAL <b>Ground: 100% PES FR</b> <b>Pile: 100% PES FR</b>
MARTINDALE <b>50.000</b>

PROPERTIES 
CARE INSTRUCTIONS     



# MAX



10920-896



10920-986



10920-990



10920-992

SELECT ALL

OVERVIEW

ZIMMER+ROHDE

NAME <b>Max</b>
ARTICLE NUMBER <b>10920</b>
CATEGORY <b>Decoration</b>

FABRIC WIDTH <b>290 cm</b> ↑↓
MATERIAL <b>47% PAN, 27% PES, 20% LI, 6% CV</b>
MARTINDALE

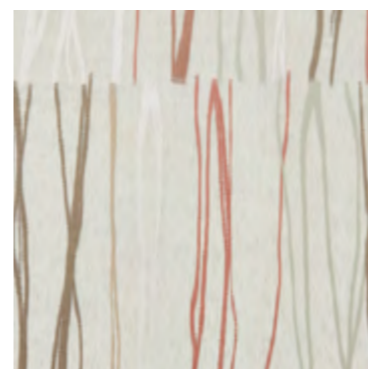
PROPERTIES 
CARE INSTRUCTIONS 

Structured trapezoid surfaces interlock into a generous all-over design in this semi-transparent Scherli fabric. The interplay of transparency, density and three-dimensional bouclé structure results in the most beautiful play of light and shadow against the window as well as in the interior.



# PASTELS

ZIMMER+ROHDE



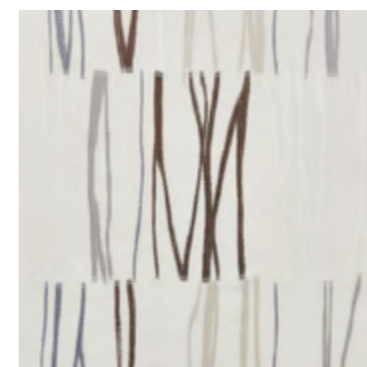
10921-373



10921-593



10921-981



10921-992

SELECT ALL

NAME <b>Pastels</b>
ARTICLE NUMBER <b>10921</b>
CATEGORY <b>Sheers</b>

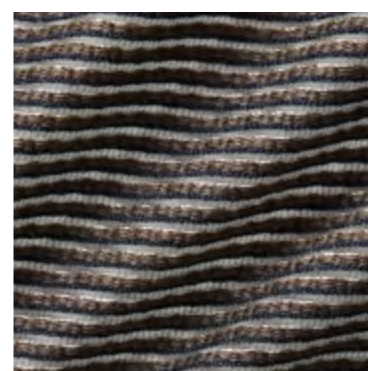
FABRIC WIDTH <b>295 cm</b> ↑↓
MATERIAL <b>39% PES, 37% LI, 14% CO, 10% CV</b>
MARTINDALE

PROPERTIES 
CARE INSTRUCTIONS 

Hand-drawn pastel chalk lines in soft shades follow a vertical rhythm reminiscent of bundled raffia fibers. The natural-looking design is woven using the Scherli technique on a transparent half-linen base fabric.



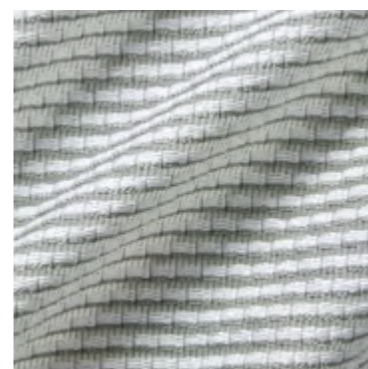
# LINEARE



10922-857



10922-885



10922-991



10922-994

SELECT ALL

ZIMMER+ROHDE

NAME <b>Lineare</b>
ARTICLE NUMBER <b>10922</b>
CATEGORY <b>Decoration</b>

FABRIC WIDTH <b>300 cm</b>
MATERIAL <b>74% PES, 26% PAN</b>
MARTINDALE

PROPERTIES 
CARE INSTRUCTIONS 

A metallic shimmer, reminiscent of graphite: the elegant horizontal-striped LINEARE comes into its own particularly when used generously as a window treatment. A fine color-contrasting line emphasizes the woven relief of transparency and density. This exceptional decorative fabric is manufactured in Germany and is climate-neutral. The yarns are all sourced in Europe.



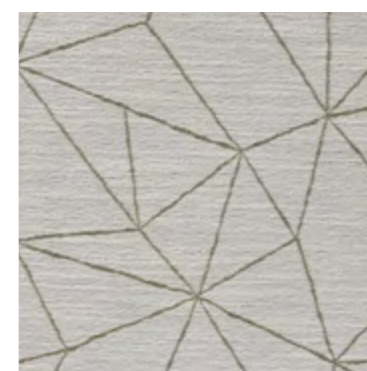
OVERVIEW

# INTERSECTIONS

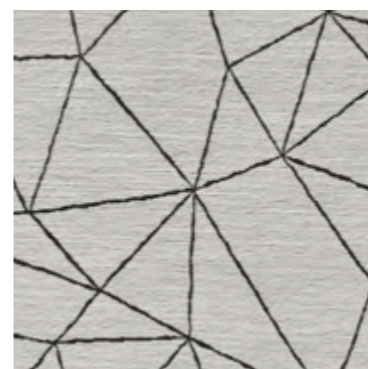
ZIMMER+ROHDE



10923-897



10923-991



10923-992



10923-993

SELECT ALL

NAME <b>Intersections</b>
ARTICLE NUMBER <b>10923</b>
CATEGORY <b>Decoration</b>

FABRIC WIDTH <b>140 cm</b>
MATERIAL <b>33% CV, 27% PAN, 23% PES, 14% LI, 3% CO</b>
MARTINDALE

PROPERTIES 
CARE INSTRUCTIONS 

INTERSECTIONS is a double-sided jacquard fabric with a woolen feel. The polygonal network of hand-drawn lines is a charming contrast to the softly flowing materiality. The densely woven fabric with attractive front and reverse is suitable not only for cozy window treatments, but also as a decorative bedspread. This decorative fabric is produced in Germany and is climate neutral. The yarns are all sourced in Europe.





OVERVIEW

# SCRIPT

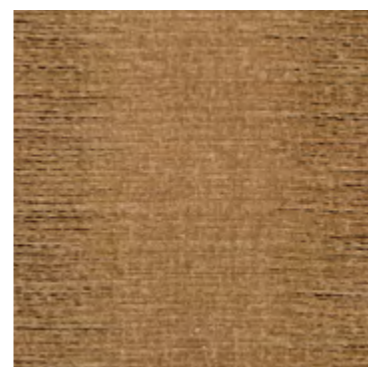
ZIMMER+ROHDE



10924-483



10924-654



10924-885



10924-892

NAME <b>Script</b>
ARTICLE NUMBER <b>10924</b>
CATEGORY <b>Decoration</b>

FABRIC WIDTH <b>150 cm</b>
MATERIAL <b>100% LI</b>
MARTINDALE

PROPERTIES
CARE INSTRUCTIONS 

Despite being machine manufactured, SCRIPT can genuinely be described as a textile work of art. The casual decorative fabric is fascinating in more ways than one. The block stripes, which are only delicately hinted at, are composed of countless yarns woven into the base fabric at specific points, reminiscent of lines of text written by an unknown hand. The lively base colors were achieved in an artistic handcrafted dyeing process. This fabric is made of 100% European linen and manufactured in Italy.

OVERVIEW

**ZIMMER+ROHDE**



10924-990

SELECT ALL

NAME <b>Script</b>
ARTICLE NUMBER <b>10924</b>
CATEGORY <b>Decoration</b>

FABRIC WIDTH <b>150 cm</b>
MATERIAL <b>100% LI</b>
MARTINDALE

PROPERTIES
CARE INSTRUCTIONS 

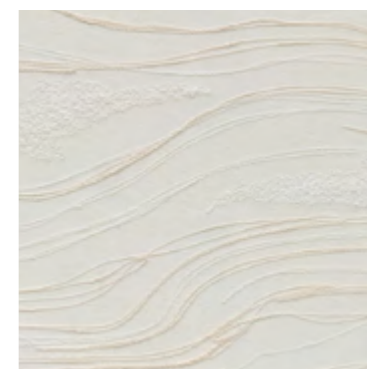


## RANDOM LINES

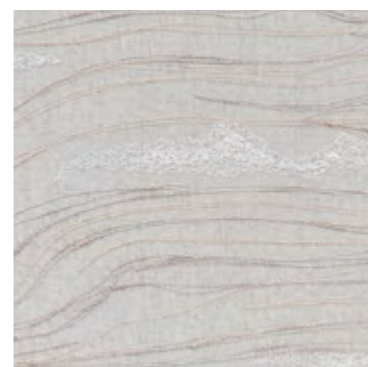
ZIMMER+ROHDE



10925-883



10925-981



10925-993

SELECT ALL

NAME <b>Random Lines</b>
ARTICLE NUMBER <b>10925</b>
CATEGORY <b>Decoration</b>

FABRIC WIDTH <b>150 cm</b> <b>Usable Width: 135 cm</b>
MATERIAL <b>Ground: 100% LI</b> <b>Embroidery: 60% CO, 40% PES</b>
MARTINDALE

PROPERTIES 
CARE INSTRUCTIONS 

A randomly and intuitively created line drawing was translated as a fine embroidery on a translucent linen base for RANDOM LINES. It extends across the entire fabric breadth. In order to reproduce the hand-drawn character as authentically as possible, three different embroidery threads were used in various thicknesses and with varying textures. This artistic textile is made of 85% European linen and is manufactured in Italy.



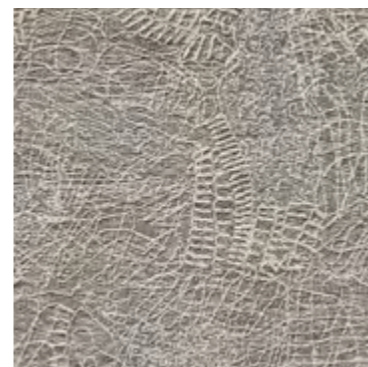
# GRAFFITI



10926-883



10926-981



10926-984

SELECT ALL

OVERVIEW

ZIMMER+ROHDE

NAME <b>Graffiti</b>
ARTICLE NUMBER <b>10926</b>
CATEGORY <b>Decoration</b>

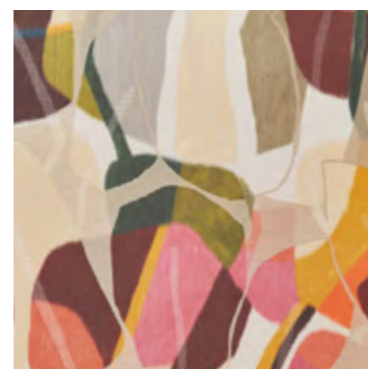
FABRIC WIDTH <b>150 cm</b> Usable Width: 140 cm
MATERIAL <b>Ground: 60% CO, 40% LI</b> <b>Embroidery: 40% CV, 26% CO,</b> <b>20% LI, 7% PES, 7% PA</b>
MARTINDALE

PROPERTIES 
CARE INSTRUCTIONS 

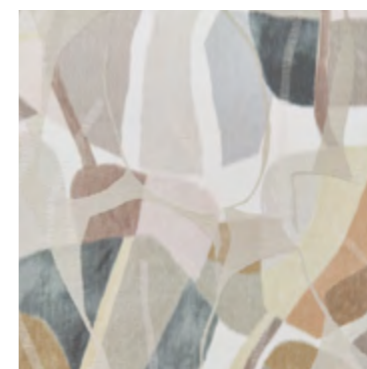
Everyone has seen those walls, often in ancient cities, etched into over and over, with proclamations of love or slogans, so many that nothing remains legible over the years. This particular form of vandalism was the inspiration for GRAFFITI, a natural jacquard fabric with dense all-over embroidery. The base fabric is 40% European linen, with 60% organically-sourced cotton, made and embroidered in Italy.



## GRAND LEAVES



10927-275



10927-892

SELECT ALL

ZIMMER+ROHDE

NAME

**Grand Leaves**

ARTICLE NUMBER

**10927**

CATEGORY

**Decoration**

FABRIC WIDTH

**143 cm****Usable Width: 137 cm**

MATERIAL

**47% CO, 30% LI,  
23% PES**

MARTINDALE

PROPERTIES

CARE INSTRUCTIONS



GRAND LEAVES is the result of impressive artistic expression and textile experimentation. The colorful, expressive painting was applied to the finely-threaded and dense warp threads as a resource-saving digital print before the weaving process began. With this warp printing technique, the warp threads shift slightly in relation to each other during weaving, resulting in an intentionally blurred color effect, especially on the outer edges of the painted leaf shapes. In addition, the jacquard technique is used to combine the printed painting with an abstract silhouette pattern. The positioning of the two design steps in relation to each other is deliberately left to chance. This creates surprising overlays that are always changing.



## COLOUR STUDY

ZIMMER+ROHDE



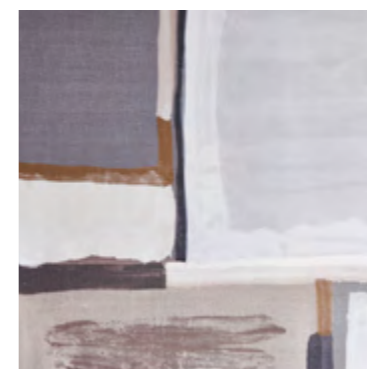
10928-585



10928-715



10928-825




10928-983

SELECT ALL

NAME <b>Colour Study</b>
ARTICLE NUMBER <b>10928</b>
CATEGORY <b>Decoration</b>

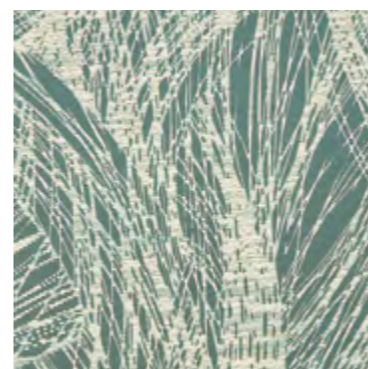
FABRIC WIDTH <b>157 cm</b> <b>Usable Width: 152 cm</b>
MATERIAL <b>100% LI</b>
MARTINDALE

PROPERTIES 
CARE INSTRUCTIONS     

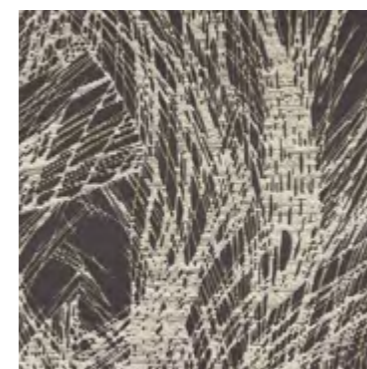
For many artists and designers, the interplay of colors is one of the most important foundations of their work. This leads to countless studies to try out the effects of certain color combinations. The linen print fabric COLOUR STUDY reflects the liveliness and spontaneity of an intuitively created brush sketch. In a painterly hand, large and small color fields in soft tones and strong colors are juxtaposed, developing an intense depth of color on the elegantly shimmering linen satin. The base fabric, woven in France, consists of 100% linen of European origin and was digitally printed in Austria using resource-saving digital print technology.



# INTUITION



10929-645



10929-818



10929-891



10929-983

SELECT ALL

ZIMMER+ROHDE

NAME <b>Intuition</b>
ARTICLE NUMBER <b>10929</b>
CATEGORY <b>Decoration</b>

FABRIC WIDTH <b>140 cm</b>
MATERIAL <b>36% CV, 26% LI, 20% CO, 18% PES</b>
MARTINDALE

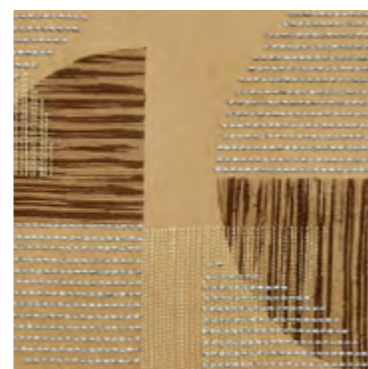
PROPERTIES
CARE INSTRUCTIONS 

The abstract design of the jacquard fabric INTUITION thrives on the tension between texture, surface and line. Craftsmanship and elegance are cleverly combined by the interplay of voluminous linen yarn with shimmering metallic accents, emphasizing the powerful dynamics of the generous brush strokes.



## SUPERIMPOSITION

ZIMMER+ROHDE



10931-786



10931-816



10931-993



10931-994

SELECT ALL

NAME

**Superimposition**

ARTICLE NUMBER

**10931**

CATEGORY

**Decoration**

FABRIC WIDTH

**140 cm**


**Usable Width: 134 cm**

MATERIAL

**Ground: 100% LI**  
**Embroidery: 60% CV, 40% PES**

MARTINDALE

PROPERTIES

**Lining recommended** 

CARE INSTRUCTIONS



As is so often the case, the sophistication of SUPERIMPOSITION is in the detail. Different hatching styles have been translated into elaborate embroidery with a great deal of imagination and flair, fully exploiting the possibilities of machine production technology. Finer and coarser hatchings in circular shapes overlap on the naturally elegant linen satin and come together to form a graphic all-over design.



# Order

COMPANY NAME

---

CUSTOMER NR

---

**RING-SET (14-01236)**

SHIP TO:

STREET

---

CITY / STATE / ZIP

---

ANY SPECIAL REQUEST

To submit your request: Please click the **SAVE & SEND** button, the PDF will be automatically attached to your email to us.

OVERVIEW

**ZIMMER+ROHDE**

IMPRINT

**Zimmer + Rohde GmbH**  
Zimmersmühlenweg 14-18  
61440 Oberursel/Frankfurt  
Germany

www.zimmer-rohde.com  
info@zimmer-rohde.com  
Phone +49 (0) 6171 632 02

**CEO**  
Torsten Poschardt

HR Bad Homburg, HRB 5073  
Ust-IdNr. DE 812 646 222

SAVE & SEND