

ardecora

Milano

VILLA FARNESINA

COLLECTION 2021 / 2022

 **CLICKBOOK**

OVERVIEW

| | |
|----------------|----|
| VASARI | 04 |
| BELLINI | 06 |
| URBINO | 08 |
| TERRAZZO | 09 |
| AFFRESCO | 10 |
| PALAZZO DUCALE | 12 |
| BRAMANTE | 14 |
| STUCCO | 16 |
| DIPINTO | 17 |
| PANTHEON | 19 |
| CARRARA | 21 |



VILLA FARNESINA

The Italian Renaissance – a period marked by the debut of oil painting, the emergence of perspective and the vibrancy of multi-layered colour worlds in art. The Ardecora 2021 collection celebrates this exciting era in all its facets and is particularly dedicated to its materiality and architecture: Eminent fortresses of sandstone and the linear sophistication of impressive buildings are the inspiration for the choreography of the new designs. VILLA FARNESINA, mythical place of creation of the master Renaissance artist Raphael, is the eponym for the expressive modernity, creative freedom and passionate craftsmanship of the current collection.

Noble PANTHEON – the materialised architecture of the eponymous building in Rome – is presented in straightforward and alert geometry as an artful print in colourful rosé, copper to petrol. Contemporary and stylish, DIPINTO flirts with its viewer. The cultivated, hand crafted look of the beautiful embroidery on raw silk is borrowed from the clear silhouettes of Mediterranean stone buildings. Anyone can lose themselves in the face of the high-quality velour and lavish TERRAZZO upholstery fabric – as well as in its intarsia-like décor. Striking and majestic, AFFRESCO meets us with a sophisticated finish, soft feel and a beguiling patina effect as a classic translation of the subject.

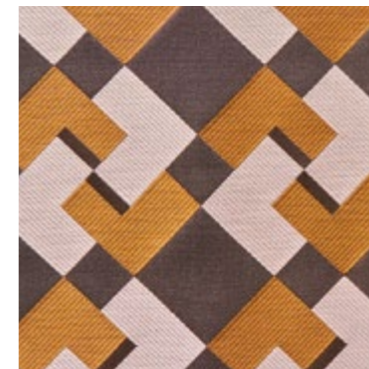
With the VILLA FARNESINA collection, Ardecora succeeds in creating an unmistakable interpretation of the Renaissance in the modern Zeitgeist. The designs and colourings are told in a very Italian way – expressive, picturesque and self-confident.



VASARI



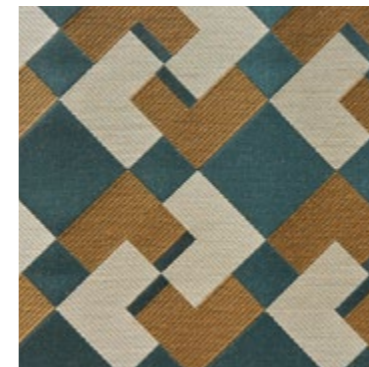
15476-184



15476-488



15476-587



15476-687

OVERVIEW

NAME
Vasari

ARTICLE NUMBER
15476

CATEGORY
**Decoration
Upholstery**

FABRIC WIDTH
140 cm

MATERIAL
69 % CO, 31 % PA

MARTINDALE
25.000

PROPERTIES

CARE INSTRUCTIONS



This graphic jacquard pattern fascinates with its sophisticated and vibrant color combinations. The use of high-quality mercerized cotton in the weft and the special weave effects give VASARI its fine sheen and dimensional surface structure. The seven beautiful colorways of this all-over design can be used both as an upholstery and as a decorative fabric and integrated into any elegant room concept.



15476-787



15476-988



15476-993

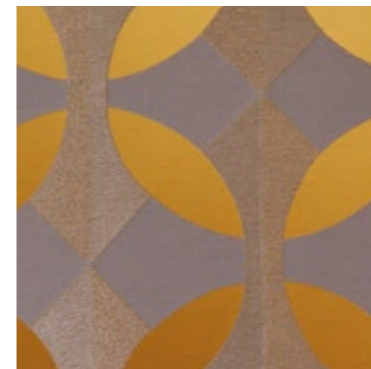
| |
|--|
| NAME Vasari |
| ARTICLE NUMBER 15476 |
| CATEGORY Decoration Upholstery |

| |
|-------------------------------------|
| FABRIC WIDTH 140 cm |
| MATERIAL 69 % CO, 31 % PA |
| MARTINDALE 25.000 |

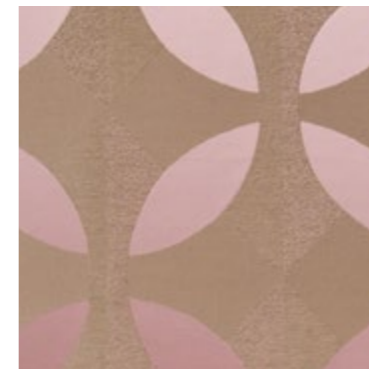
| |
|--|
| PROPERTIES |
| CARE INSTRUCTIONS  |



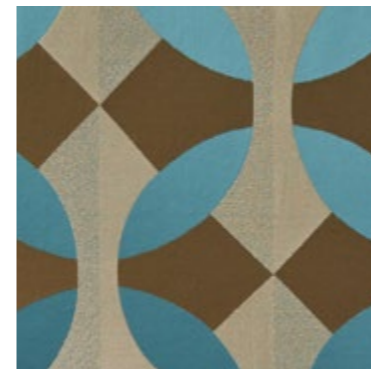
BELLINI



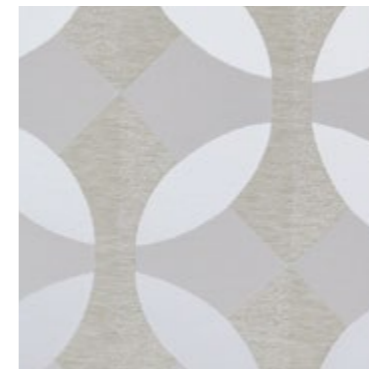
15477-184



15477-484



15477-686



15477-982

OVERVIEW

| |
|--------------------------------|
| NAME Bellini |
| ARTICLE NUMBER 15477 |
| CATEGORY Decoration |

| |
|--|
| FABRIC WIDTH 140 cm |
| MATERIAL 39 % CO, 26 % LI, 25 % PES, 10 % CV |
| MARTINDALE |

| |
|-----------------------|
| PROPERTIES |
| CARE INSTRUCTIONS |

BELLINI is a modern interpretation of a classic marble floor from the Italian Renaissance. The juxtaposition of matte and shiny weave effects gives this decorative textile depth and creates a subtle play of colors. In addition, a special finish gives BELLINI its voluminous and soft drape.



15477-993

OVERVIEW

NAME
Bellini

ARTICLE NUMBER
15477

CATEGORY
Decoration

FABRIC WIDTH
140 cm

MATERIAL
**39 % CO, 26 % LI,
25 % PES, 10 % CV**

MARTINDALE

PROPERTIES

CARE INSTRUCTIONS

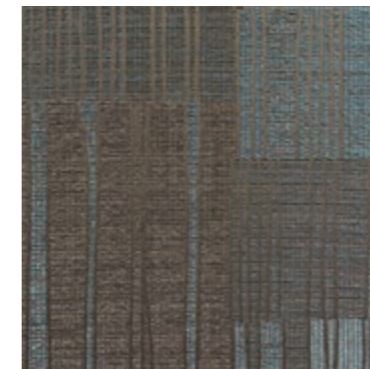




URBINO



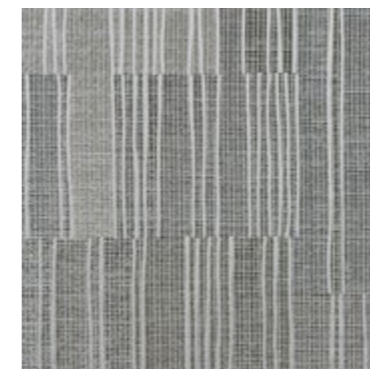
15478-284



15478-687



15478-883



15478-992

| |
|--------------------------------|
| NAME Urbino |
| ARTICLE NUMBER 15478 |
| CATEGORY Decoration |

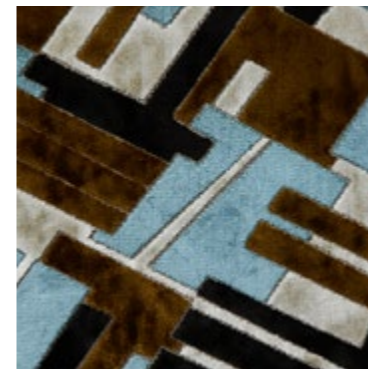
| |
|---|
| FABRIC WIDTH 140 cm |
| MATERIAL 47 % CV, 30 % CO, 23 % PES |
| MARTINDALE |

| |
|-----------------------|
| PROPERTIES |
| CARE INSTRUCTIONS |

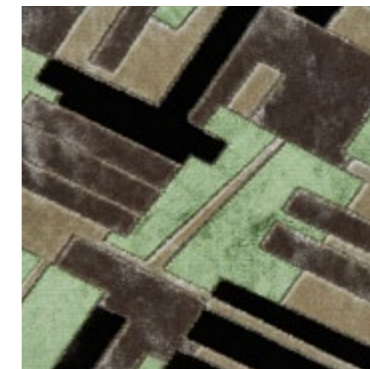
URBINO is inspired by the city of the same name, birthplace of the painter Raffaello. The precise structure of this contemporary jacquard is reminiscent of Renaissance architecture and materials used in the region. The sophisticated weaving technique and the use of subtle lustre yarns create delightful light and shade effects that give URBINO its special charm.



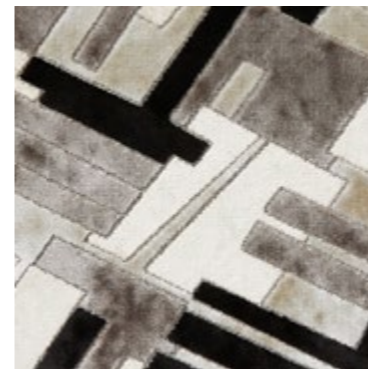
TERRAZZO



15479-687



15479-796



15479-993

| |
|--------------------------------|
| NAME Terrazzo |
| ARTICLE NUMBER 15479 |
| CATEGORY Upholstery |

| |
|--|
| FABRIC WIDTH 140 cm |
| MATERIAL Ground: 100 % PES Pile: 60 % PAN, 40 % CV |
| MARTINDALE 50.000 |

| |
|-----------------------|
| PROPERTIES |
| CARE INSTRUCTIONS |

Inspired by the floors of the same name in the Villa FARNESINA, TERRAZZO reflects the sometimes astonishing modernity and clarity of design language during the Renaissance. This spectacular jacquard velour has a pleasantly soft hand and is created using an elaborate process of creation, ranging from weaving to coloring and finishing. The exclusive choice of materials results in an incredible variety of brilliant colors with a high-quality viscose shimmer.



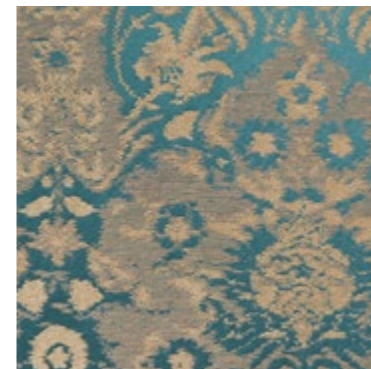
AFFRESCO



15480-295



15480-584



15480-697



15480-992

| |
|--------------------------------|
| NAME Affresco |
| ARTICLE NUMBER 15480 |
| CATEGORY Decoration |

| |
|---|
| FABRIC WIDTH 140 cm |
| MATERIAL 60 % LI, 28 % PES, 12 % CV |
| MARTINDALE |

| |
|-----------------------|
| PROPERTIES |
| CARE INSTRUCTIONS |

The timeless interpretation of this damask design gives this softly flowing decorative item its special sophistication. A fresco in a villa in Florence was the inspiration for this intricate jacquard, which is woven on a very fine silk-like warp. After weaving, the fabric is refined with a gentle brush finish, giving it its modern character and special hand.



15480-993

OVERVIEW

NAME

Affresco

ARTICLE NUMBER

15480

CATEGORY

Decoration

FABRIC WIDTH

140 cm

MATERIAL

**60 % LI, 28 % PES,
12 % CV**

MARTINDALE

PROPERTIES

CARE INSTRUCTIONS





PALAZZO DUCALE

OVERVIEW



15481-484



15481-586



15481-786



15481-798

| |
|--------------------------------|
| NAME Palazzo Ducale |
| ARTICLE NUMBER 15481 |
| CATEGORY Decoration |

| |
|---|
| FABRIC WIDTH 140 cm |
| MATERIAL 100 % CO Embroidery: 90 % CV, 10 % PES |
| MARTINDALE |

| |
|--|
| PROPERTIES  |
| CARE INSTRUCTIONS  |

PALAZZO DUCALE is a textile masterpiece that captivates with its handcrafted style. The artful embroidery of this noble decorative stripe on fine cotton satin fascinates with its subtle colorfulness and three-dimensional relief. This contemporary interpretation creates a graphic effect that showcases the refined beauty of this sophisticated item.



15481-982



15481-994

| |
|--------------------------------|
| NAME Palazzo Ducale |
| ARTICLE NUMBER 15481 |
| CATEGORY Decoration |

| |
|---|
| FABRIC WIDTH 140 cm |
| MATERIAL 100 % CO Embroidery: 90 % CV, 10 % PES |
| MARTINDALE |

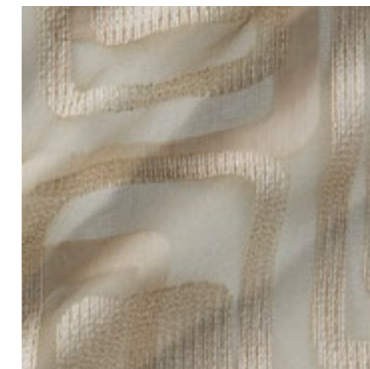
| |
|-----------------------|
| PROPERTIES |
| CARE INSTRUCTIONS |



BRAMANTE



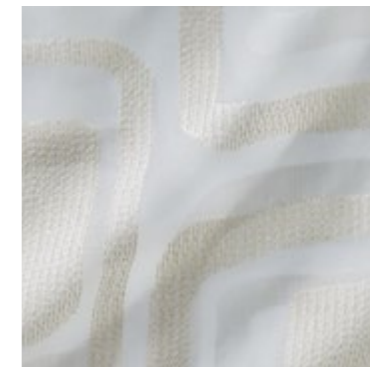
15482-867



15482-885



15482-887



15482-982

OVERVIEW

NAME

Bramante

ARTICLE NUMBER

15482

CATEGORY

Sheers

FABRIC WIDTH

300 cm ↑↓

MATERIAL

**56 % PES, 42 % CO,
1 % PA, 1 % MTF**

MARTINDALE

PROPERTIES



CARE INSTRUCTIONS



A clear graphic effect is created by the contemporary ornamentation of this wide width sheer drapery. The geometric motifs woven in the fil coupé technique make BRAMANTE an expressive textile. Its three-dimensional effect is particularly accentuated by the use of subtly applied metallic yarns.



15482-994

OVERVIEW

NAME

Bramante

ARTICLE NUMBER

15482

CATEGORY

Sheers

FABRIC WIDTH

300 cm ↑↓

MATERIAL

**56 % PES, 42 % CO,
1 % PA, 1 % MTF**

MARTINDALE

PROPERTIES



CARE INSTRUCTIONS

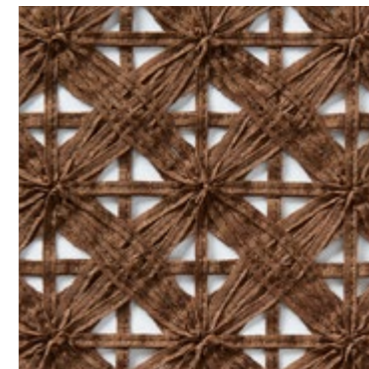




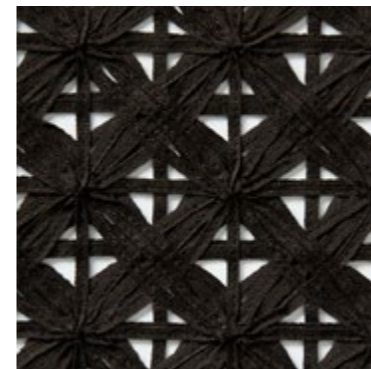
STUCCO



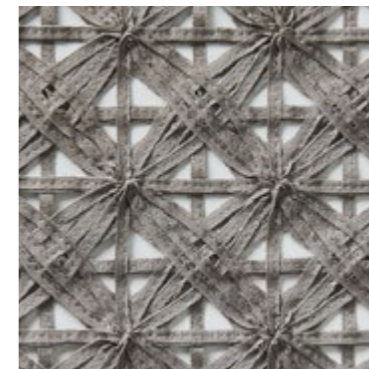
15483-881



15483-886



15483-889



15483-994

OVERVIEW

NAME
Stucco

ARTICLE NUMBER
15483

CATEGORY
Decoration

FABRIC WIDTH
150 cm

MATERIAL
100 % PES

MARTINDALE

PROPERTIES

CARE INSTRUCTIONS



Elegant and very decorative sheer drapery fabric. The innovative interpretation of this all-over design has been achieved by artfully sewn together bands of color, which give this textile its lively, three-dimensional structure. STUCCO adds a stunning accent to any sophisticated interior.



DIPINTO



15484-587



15484-783



15484-824



15484-897

NAME

Dipinto

ARTICLE NUMBER

15484

CATEGORY

Decoration

FABRIC WIDTH

140 cm

Usable Width: 130 cm

MATERIAL

100 % ST

Embroidery: 100 % CV

MARTINDALE

PROPERTIES



CARE INSTRUCTIONS



An absolute highlight in this collection is Dipinto, a handcrafted and highly elegant embroidery on the hand-woven bouclé silk, Monsoon (ZR 10683). In keeping with the contemporary Zeitgeist, this luxurious embroidery that is enhanced with subtle metallic yarns, creates a charming contrast to the raw silk base. The natural look of this beautiful item encompasses both the slight horizontal streaking and the thickness of the spun silk yarn.





15484-982



15484-984

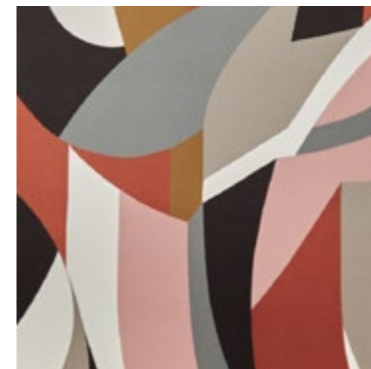
| |
|--------------------------------|
| NAME Dipinto |
| ARTICLE NUMBER 15484 |
| CATEGORY Decoration |

| |
|--|
| FABRIC WIDTH 140 cm Usable Width: 130 cm |
| MATERIAL 100 % ST Embroidery: 100 % CV |
| MARTINDALE |

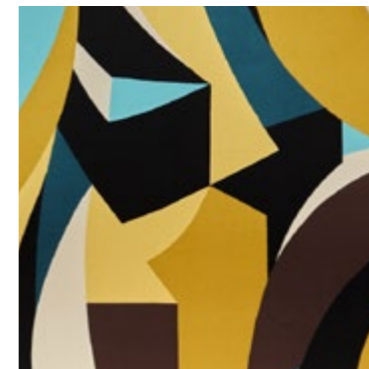
| |
|--|
| PROPERTIES  |
| CARE INSTRUCTIONS  |



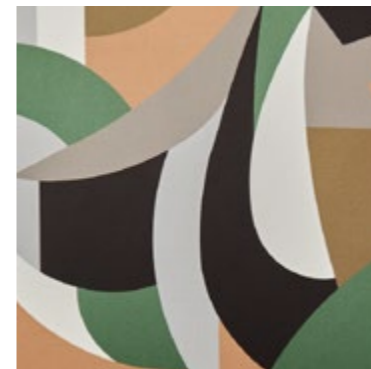
PANTHEON



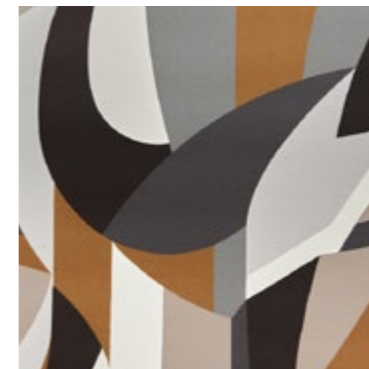
15485-484



15485-615



15485-784



15485-897

OVERVIEW

NAME

Pantheon

ARTICLE NUMBER

15485

CATEGORY

**Decoration
Upholstery**

FABRIC WIDTH

**150 cm
Usable Width: 145 cm**

MATERIAL

100 % CO

MARTINDALE

20.000

PROPERTIES

CARE INSTRUCTIONS



PANTHEON is inspired by the architecture of the ancient building of the same name in Rome. Like the view into the dome, PANTHEON conveys a fascinating impression of different geometric structures in a charming and harmonious play of colors. The subtle sheen of the elegant cotton satin base underlines the timeless and three-dimensional effect of this impressive digital print.



15485-954

OVERVIEW

NAME

Pantheon

ARTICLE NUMBER

15485

CATEGORY

**Decoration
Upholstery**

FABRIC WIDTH

**150 cm
Usable Width: 145 cm**

MATERIAL

100 % CO

MARTINDALE

20.000

PROPERTIES

CARE INSTRUCTIONS





CARRARA



15486-584



15486-828



15486-875



15486-893

NAME
Carrara

ARTICLE NUMBER
15486

CATEGORY
Upholstery

FABRIC WIDTH
145 cm

MATERIAL
**Ground: 100 % PES
Pile: 100 % PES**

MARTINDALE
30.000

PROPERTIES

CARE INSTRUCTIONS



As the name suggests, the inspiration for this prestigious and highly decorative CARRARA flat print was the Tuscan town of Carrara, which has become famous worldwide for its marble quarries. This refined interpretation of marble is particularly fascinating thanks to the combination of elegantly shimmering color nuances on the softly flowing velour base. The vibrant play of light and shade and the subtle color range make CARRARA a highlight in any sophisticated interior.

ORDER

COMPANY NAME

CUSTOMER NR

SHIP TO:

STREET

CITY / STATE / ZIP

ANY SPECIAL REQUEST

To submit your request: Please click the **SAVE & SEND** button, the PDF will be automatically attached to your email to us.

IMPRINT

Zimmer + Rohde GmbH
Zimmersmühlenweg 14-18
61440 Oberursel/Frankfurt
Germany

www.zimmer-rohde.com
info@zimmer-rohde.com
Phone +49 (0) 6171 632 02

CEO
Torsten Poschardt

HR Bad Homburg, HRB 5073
Ust-IdNr. DE 812 646 222

SAVE & SEND