



re/wild

FALL 22/23

ZR

ZIMMER+ROHDE

HODSOLL MCKENZIE  
LONDON

CLICKBOOK

# OVERVIEW

ARMADILLO	04
MONARCH	06
OKAPI	07
CUSCUS	09
SHOEBILL RE	11
HAWK	13
ONE WORLD	14
HABITAT	15



HODSOLL MCKENZIE  
LONDON

# re/wild

Rewilding is about letting nature take care of itself, enabling natural processes to shape land and sea, repairing damaged ecosystems and restoring degraded landscapes. Through rewilding, wildlife's natural rhythms create wilder, more biodiverse habitats with an emphasis on humans stepping back and leaving areas to nature.

Rewilding, when applied to humans, could also mean our return to the essentials, in order to reconnect with nature and our natural state of being. A return to the untamed aspect of ourselves, inherent in all of us. While the world becomes increasingly complex, a nature-oriented lifestyle promises conditions that are coherent and fair for every creature. It also promises space for spontaneity and joie de vivre.

In this context, the conservation of natural habitats is no longer sufficient: the desire to create new habitats, a new coexistence with nature and its wilderness – and consequently one's own wildness – is the goal of this "Rewilding" concept.

With this in mind, this collection is dedicated to all the endangered species that will vanish forever, if humankind doesn't learn to coexist with nature now. It is a celebration of nature's diversity, which we often enjoy as lifestyle but must also learn to cherish as something vulnerable and in need of protection. But it's also about stepping back and allowing ourselves to lose control and letting the wilderness teach us how to live a meaningful life.

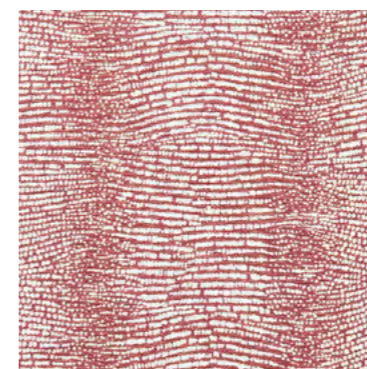


# ARMADILLO

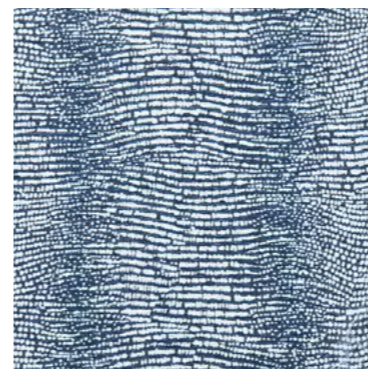
HODSOLL MCKENZIE  
LONDON



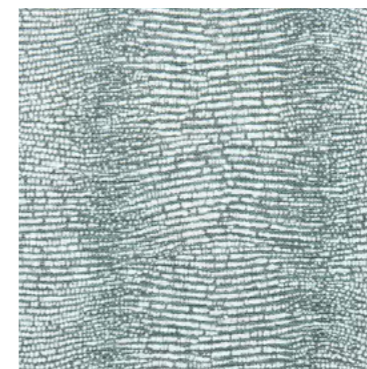
21283-183



21283-384



21283-586



21283-792

NAME <b>Armadillo</b>
ARTICLE NUMBER <b>21283</b>
CATEGORY <b>Decoration</b>

FABRIC WIDTH <b>150 cm</b>
MATERIAL <b>100% LI</b>
MARTINDALE

PROPERTIES <b>Resource Efficient Production</b>
CARE INSTRUCTIONS 

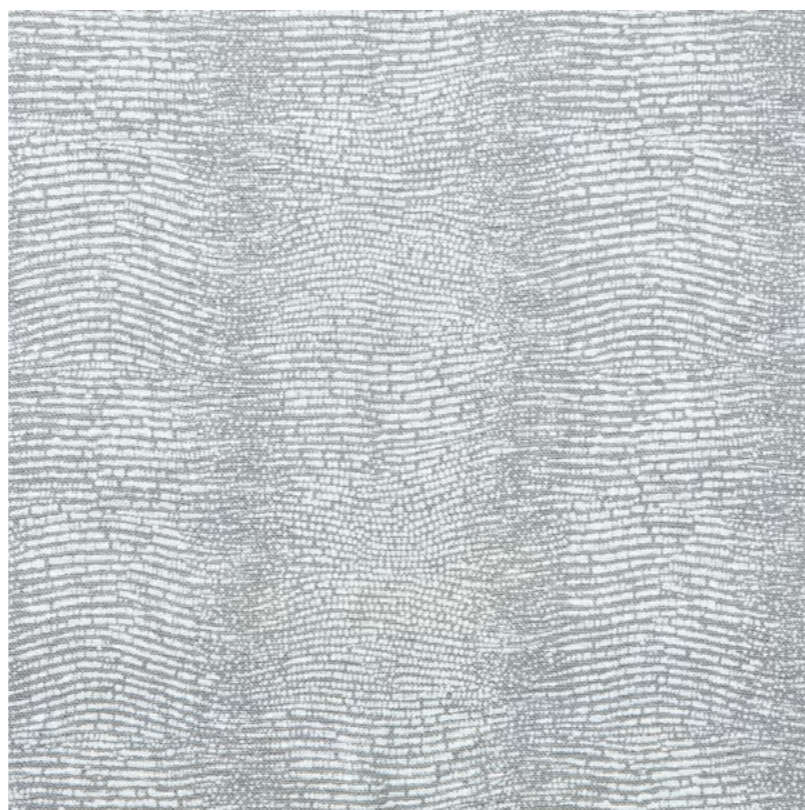
On closer inspection the armor of an armadillo is a fantastical surface of overlapping scales. Spots and striped markings alternate, sometimes sitting loosely and sometimes more closely together. As a print on a dense, yet elegantly flowing, pure linen weave, this inspiration results in an extremely delicate and subtle striped design. We have taken care to ensure that the printing process as well as the finishing are particularly resource-friendly and toxin-free for the ultimate feel-good experience.

OVERVIEW

HODSOLL MCKENZIE  
LONDON



21283-980




21283-991

SELECT ALL\*

NAME <b>Armadillo</b>
ARTICLE NUMBER <b>21283</b>
CATEGORY <b>Decoration</b>

FABRIC WIDTH <b>150 cm</b>
MATERIAL <b>100% LI</b>
MARTINDALE

PROPERTIES <b>Resource Efficient Production</b>
CARE INSTRUCTIONS 

\* By selecting this button you receive all colorways of this article.



# MONARCH

HODSOLL MCKENZIE  
LONDON



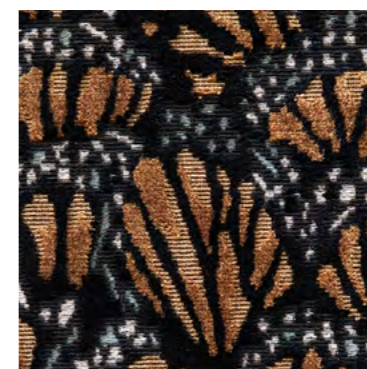
21284-385



21284-597



21284-783



21284-888

SELECT ALL

NAME <b>Monarch</b>
ARTICLE NUMBER <b>21284</b>
CATEGORY <b>Upholstery</b>

FABRIC WIDTH <b>140 cm</b>
MATERIAL <b>Ground: 55% CO, 45% CV Pile: 100% CV</b>
MARTINDALE <b>60.000</b>

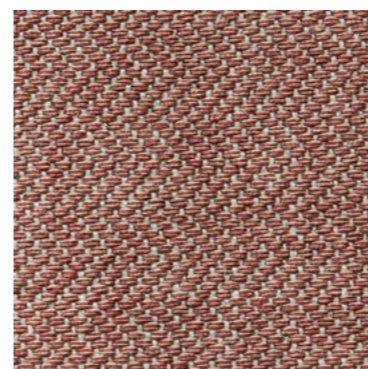
PROPERTIES <b>Contains Organic Fibers</b>	
CARE INSTRUCTIONS	

When thousands upon thousands of monarch butterflies congregate in Mexico to overwinter, it's a breathtaking sight. The oscillating movement of their wings, as these migratory butterflies hang in colonies in the trees, with their black and white markings on a warm orange background, truly are a work of art, as well as being a vital part of the entire ecosystem. Reason enough to dedicate probably the most extraordinary item in this collection to this natural phenomenon. A jacquard velour made of certified organic cotton recreates the butterfly colonies in such a sophisticated way that it will turn every piece of furniture into a work of art.

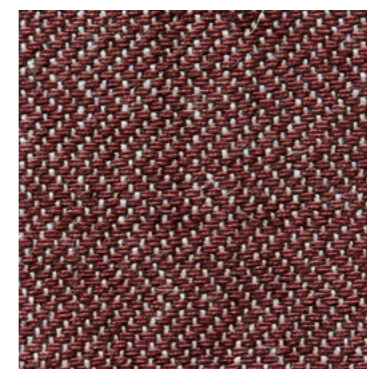


# OKAPI

HODSOLL MCKENZIE  
LONDON



21285-484



21285-486



21285-588



21285-883

NAME <b>Okapi</b>
ARTICLE NUMBER <b>21285</b>
CATEGORY <b>Upholstery</b>

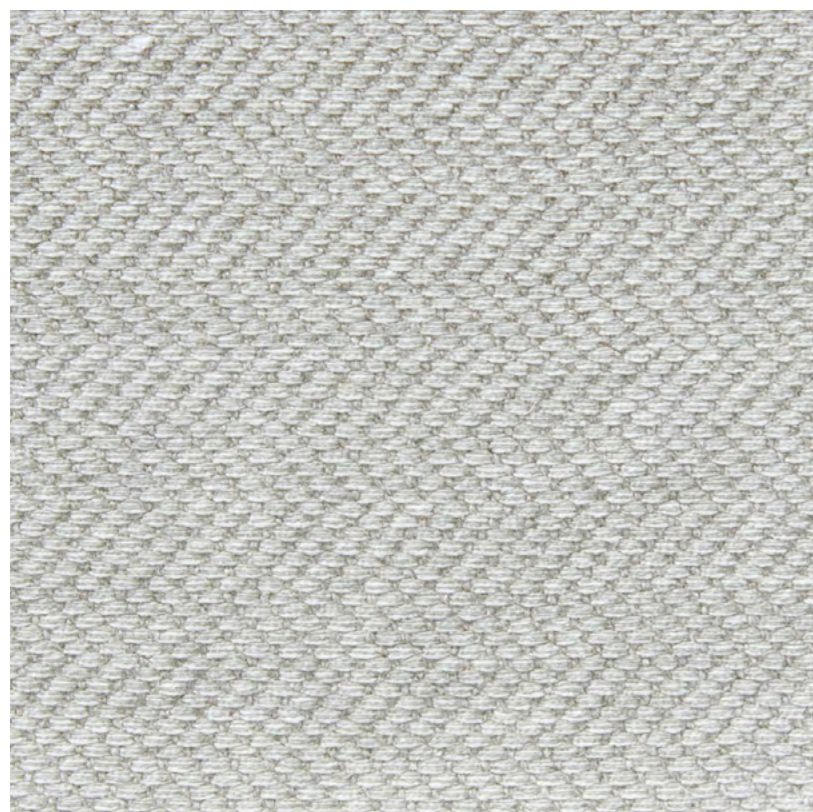
FABRIC WIDTH <b>140 cm</b>
MATERIAL <b>75% LI, 15% CO, 7% CV, 3% PA</b>
MARTINDALE <b>55.000</b>

PROPERTIES <b>Regionally sourced, Resource Efficient Production</b>
CARE INSTRUCTIONS 

This dense and heavy linen has an almost aristocratic feel, being of the highest quality and designed to age well. Made in an emission-free zero-waste weaving mill, OKAPI is double-sided. The reverse side reveals the reason why this decorative cover fabric is named after the forest giraffe. A striking zigzag is reminiscent of the okapi's moving rear with its distinctive markings. It's just a shame that there are so few of them left in the world.

OVERVIEW

HODSOLL MCKENZIE  
LONDON



21285-890

SELECT ALL

NAME <b>Okapi</b>
ARTICLE NUMBER <b>21285</b>
CATEGORY <b>Upholstery</b>

FABRIC WIDTH <b>140 cm</b>
MATERIAL <b>75% LI, 15% CO, 7% CV, 3% PA</b>
MARTINDALE <b>55.000</b>

PROPERTIES <b>Regionally sourced, Resource Efficient Production</b>
CARE INSTRUCTIONS 





# CUSCUS

HODSOLL MCKENZIE  
LONDON



21286-585



21286-783



21286-824



21286-980

NAME

**Cuscus**

ARTICLE NUMBER

**21286**

CATEGORY

**Decoration**

FABRIC WIDTH

**135 cm**

MATERIAL

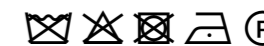
**51% LI, 39% WO, 10% PA**

MARTINDALE

PROPERTIES

**Resource Efficient  
Production**

CARE INSTRUCTIONS



A loose collection of different colored plain-weave threads, seemingly held together by the dense pile of the wool. The feel is so supple that at first you think of a blanket or a throw. But as a window treatment, the voluminous fabric will transform any interior into a cozy haven. The Talaud bear cuscus could only wish for this kind of place. Its habitat is 4000 hectares of primary forest on the Talaud island of Salibabu. But the animal is under threat from hunting and habitat reduction.

OVERVIEW

HODSOLL MCKENZIE  
LONDON




21285-991

SELECT ALL

NAME <b>Cuscus</b>
ARTICLE NUMBER <b>21286</b>
CATEGORY <b>Decoration</b>

FABRIC WIDTH <b>135 cm</b>
MATERIAL <b>51% LI, 39% WO, 10% PA</b>
MARTINDALE

PROPERTIES <b>Resource Efficient Production</b>
CARE INSTRUCTIONS 



# SHOEBILL RE

HODSOLL MCKENZIE  
LONDON



21287-493



21287-592



21287-884



21287-886

NAME <b>Shoebill RE</b>
ARTICLE NUMBER <b>21287</b>
CATEGORY <b>Sheers Decoration</b>

FABRIC WIDTH <b>300 cm</b> ↑↓
MATERIAL <b>51% LI, 49% CO RE</b>
MARTINDALE

PROPERTIES <b>Hand wash cold, Contains organic fiber, Regionally sourced</b> ♻️
--

CARE INSTRUCTIONS 👉 ✂️ 🚫 🧺 📄
---------------------------------

The shoebill really is a majestic bird. Over a meter tall and boasting a stately beak, the bird, of which there are only 6000 left in the world, strides through the swamps of southern Sudan. The fil coupé fabric SHOEBILL, in double width, mimics the plumage of this special creature. A combination of European linen and recycled cotton creates a rustic texture that is transformed into a visually feathery fabric due to the fil coupé technique, underscored by the artisanal Maltinto dyeing process.

OVERVIEW

HODSOLL MCKENZIE  
LONDON



21287-980



21287-991

SELECT ALL







NAME <b>Shoebill RE</b>
ARTICLE NUMBER <b>21287</b>
CATEGORY <b>Sheers Decoration</b>

FABRIC WIDTH <b>300 cm</b> ↑↓
----------------------------------

MATERIAL <b>51% LI, 49% CO RE</b>
--------------------------------------

MARTINDALE
------------

PROPERTIES <b>Hand wash cold, Contains organic fiber, Regionally sourced</b> 
---

CARE INSTRUCTIONS      
--



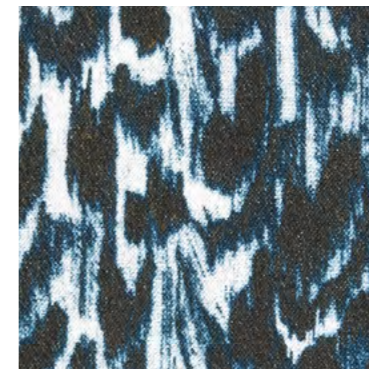
OVERVIEW

# HAWK

HODSOLL MCKENZIE  
LONDON



21288-386



21288-585



21288-892





21288-894

SELECT ALL

NAME <b>Hawk</b>
ARTICLE NUMBER <b>21288</b>
CATEGORY <b>Decoration Upholstery</b>

FABRIC WIDTH <b>140 cm</b>
MATERIAL <b>Ground: 100% CO Pile: 100% CO</b>
MARTINDALE <b>20.000</b>

PROPERTIES <b>Contains Organic Fibers</b>	
CARE INSTRUCTIONS	
	

A velour made of GOTS-certified cotton is printed with artistic plumage, in which two complementary colors combine in a muted way. The result is an animal print that, in some colorways, looks more like a painting, and sometimes indeed reminiscent of the plumage of an eagle, easily integrated into a variety of interior styles. The quality of the velour in haptic and drape allows for many possible uses.



OVERVIEW

# ONE WORLD

HODSOLL MCKENZIE  
LONDON



21289-553



21289-774



21289-882



21289-886

SELECT ALL

NAME <b>One World</b>
ARTICLE NUMBER <b>21289</b>
CATEGORY <b>Decoration</b>

FABRIC WIDTH <b>140 cm</b>
MATERIAL <b>59% CO, 41% LI</b>
MARTINDALE

PROPERTIES <b>Contains Organic Fibers</b>
CARE INSTRUCTIONS 

The highlight of this collection is ONE WORLD, an illustrative collage of many endangered species in full fabric width, which was interpreted as a sophisticated jacquard made with cotton and European linen in an Italian weaving mill. The subtle color contrast makes the design of the decorative fabric look rather abstract when used as a curtain, while the figurative character is more apparent when used as an upholstery fabric. It's a fabric that is sure to be a real talking point.



# HABITAT



21290-184



21290-385



21290-585



21290-597

HODSOLL MCKENZIE  
LONDON

NAME <b>Habitat</b>
ARTICLE NUMBER <b>21290</b>
CATEGORY <b>Upholstery</b>

FABRIC WIDTH <b>140 cm</b>
MATERIAL <b>55% CO, 45% CV</b>
MARTINDALE <b>20.000</b>

PROPERTIES <b>Contains Organic Fibers</b>
CARE INSTRUCTIONS 

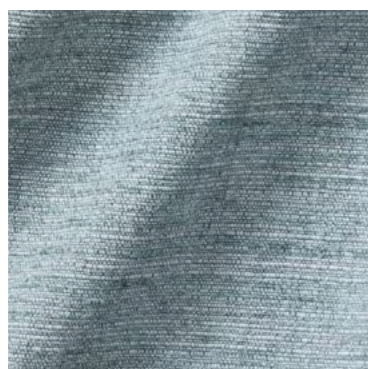
This lightweight upholstery and decorative fabric captivates with a subtle stripe, thanks to the use of a chenille yarn made of Tencel, which provides a lively structure in interaction with the cotton warp yarn. With a soft feel and beautiful volume, this plain fabric, or rather universal fabric, can be used just about anywhere. We hope that HABITAT will serve as a reminder that our habitats are the foundation of all our existence and need our special protection.

OVERVIEW

HODSOLL MCKENZIE  
LONDON



21290-598



21290-684



21290-785



21290-981



21290-982



21290-983




21290-986



21290-990  
SELECT ALL

NAME <b>Habitat</b>
ARTICLE NUMBER <b>21290</b>
CATEGORY <b>Upholstery</b>

FABRIC WIDTH <b>140 cm</b>
MATERIAL <b>55% CO, 45% CV</b>
MARTINDALE <b>20.000</b>

PROPERTIES <b>Contains Organic Fibers</b>
CARE INSTRUCTIONS 



# ORDER

COMPANY NAME

---

CUSTOMER NR

---

RING-SET (14-01236)

SHIP TO:

STREET

---

CITY / STATE / ZIP

---

ANY SPECIAL REQUEST

To submit your request: Please click the **SAVE & SEND** button, the PDF will be automatically attached to your email to us.

OVERVIEW

HODSOLL MCKENZIE  
LONDON

IMPRINT

**Zimmer + Rohde GmbH**  
Zimmersmühlenweg 14-18  
61440 Oberursel/Frankfurt  
Germany

www.zimmer-rohde.com  
info@zimmer-rohde.com  
Phone +49 (0) 6171 632 02

**CEO**  
Torsten Poschardt

HR Bad Homburg, HRB 5073  
Ust-IdNr. DE 812 646 222

SAVE & SEND