



HEURES D'ÉTÉ
COLLECTION 2023

ZR

ETAMINE
PARIS


CLICKBOOK

Overview

CLÉMATITE	04	NICE	17
SORGUE	06	SAINT-TROPEZ	19
ROSE PIVOINE	07	ALPILLES	21
MAUSSANE	08	RAMATUELLE	22
SAINT-RÉMY	09	ARLES	24
VALBONNE	10		
JUAN-LES-PINS	12		
MENTON	14		
ROQUEBRUNE	16		

ETAMINE
PARIS



HEURES D'ÉTÉ

COLLECTION 2023

Capturing the natural world around us, our new Étamine collection reveals the special balance that must be maintained between architecture and design on the one hand and landscape on the other. By bringing nature into the home and opening up our interiors to what's outside, we can create windows that showcase Mother Nature's glories, reinvented anew each day.

Here, in southern Portugal, in an impressive villa designed by a leading French architect, the vertical reach of the contemporary design combines with the horizontal expanse of the ocean to create a near-perfect geometry. The shadows cast by the sun, meanwhile, bring a third dimension to the scene. Fanned by the breeze, the plant-inspired designs of the woven fabrics are brought to life, moving beyond their frame in fluid movements like a waterfall of linen and wool cascading noiselessly into a pond below.

Around a bend in the pathway, a group of chairs covered in colored linen form a light ensemble, while another chair, upholstered in alluring velvet, rocks gently beneath a stone stairway. Higher up, on a terrace, a pair of sun loungers upholstered with a clematis-inspired print appear to take flight in the gentle breeze. Whether by the poolside or on a patio or terrace, the Étamine outdoor fabric collection plays with a mix of styles, its joyful stripes, herringbone and houndstooth patterns shining brightly under the summer sun.

To offer protection from the sun's heat, the wide walkways are draped in linen voiles that, as they flutter in the breeze, seem to play with the floral wool embroidery of the linen throw on the armchair inside. On the sheltered terrace, the couches – just like the indoor seating – are upholstered in stonewashed velvet, with textured boucle wool, to create a place where the days of summer can be enjoyed all year round.

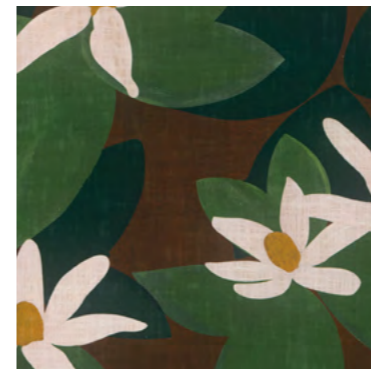


OVERVIEW

Clématite

ETAMINE

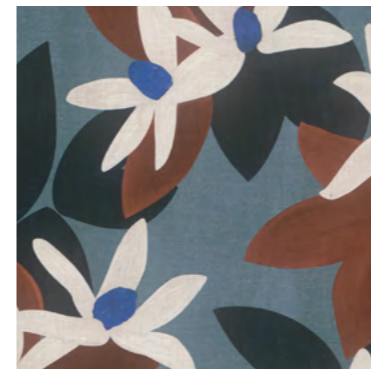
PARIS



19598-367



19598-425



19598-536



19598-626

NAME Clématite
ARTICLE NUMBER 19598
CATEGORY Decoration

FABRIC WIDTH 140 cm Usable Width: 135 cm
MATERIAL 100% CO
MARTINDALE 30.000

PROPERTIES 
CARE INSTRUCTIONS 

Manufactured in Italy by a renowned printer, the CLÉMATITE print is a vibrant reinterpretation of Etamine Paris' florals. Digitally printed on cotton, CLÉMATITE presents an interlacing of flowers, evoking a Mediterranean garden. Its unique character can be seen in the artistic deconstruction of the image, hand-painted by an artist. Its "basket tumbler" finish lends the cotton an elegant look and extremely supple drop. This contemporary design is accentuated by a modern ambiance of clear, radiant lightness.



19598-894

SELECT ALL*



OVERVIEW

ETAMINE

PARIS

NAME Clématite
ARTICLE NUMBER 19598
CATEGORY Decoration

FABRIC WIDTH 140 cm Usable Width: 135 cm
MATERIAL 100% CO
MARTINDALE 30.000

PROPERTIES 
CARE INSTRUCTIONS 

* By selecting this button you receive all colorways of this article



Sorgue



19599-781



19599-815



19599-881



19599-914

SELECT ALL

OVERVIEW

ETAMINE
PARIS

NAME Sorgue
ARTICLE NUMBER 19599
CATEGORY Decoration

FABRIC WIDTH 140 cm Usable Width: 130 cm
MATERIAL 63% LI, 21% CO, 16% PES
MARTINDALE

PROPERTIES
CARE INSTRUCTIONS

Sublime Cornely embroidery boldly evokes the delicate dance of colored foliage – all in relief and with an interplay of materials – on a heavy linen base.

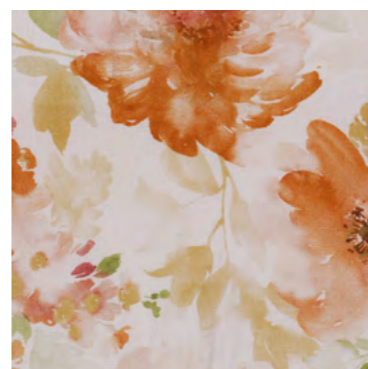


OVERVIEW

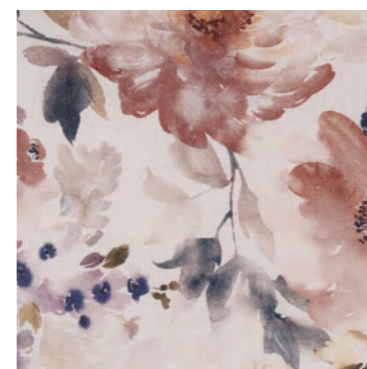
Rose Pivoine

ETAMINE

PARIS



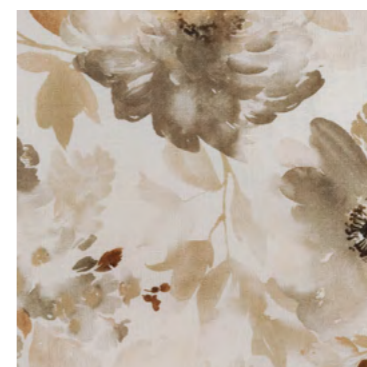
19600-434



19600-445



19600-715



19600-893

SELECT ALL

NAME Rose Pivoine
ARTICLE NUMBER 19600
CATEGORY Decoration

FABRIC WIDTH 145 cm Usable Width: 136 cm
MATERIAL 100% LI
MARTINDALE

PROPERTIES
CARE INSTRUCTIONS

The hand-painted ROSE PIVOINE print is testimony to Etamine Paris' love of florals. Digitally printed just outside Venice in Italy on 100% linen, ROSE PIVOINE depicts bouquets of cut roses that waltz across the linen. The "basket tumbler" finish lends a vintage look to the colors of the flowers and an authentic drop to the linen.



Maussane



19601-435



19601-515



19601-765



19601-884

SELECT ALL

This embroidered 100%-linen fabric is a testament to Etamine Paris' love of exuberant florals and colors. Poppies rhythmically weave and intertwine. The embroidery work here is a true art form and extremely time-consuming. Every detail is embroidered in chain stitch using a matte wool thread. The stitches delicately follow the direction of the shapes.

OVERVIEW

ETAMINE

PARIS

NAME

Maussane

ARTICLE NUMBER

19601

CATEGORY

Sheers

FABRIC WIDTH

140 cm

Usable Width: 130 cm

MATERIAL

**100% LI, Embroidery:
63% PAN, 37% CV**

MARTINDALE

PROPERTIES



CARE INSTRUCTIONS

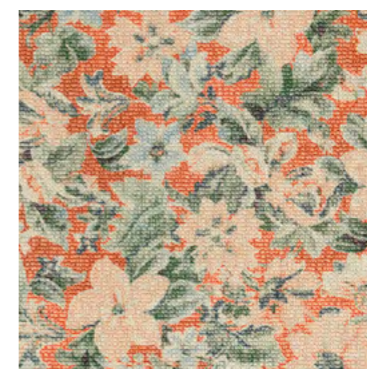




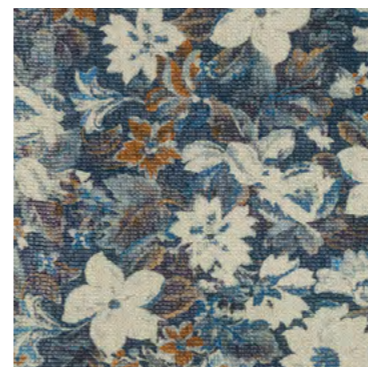
Saint-Rémy



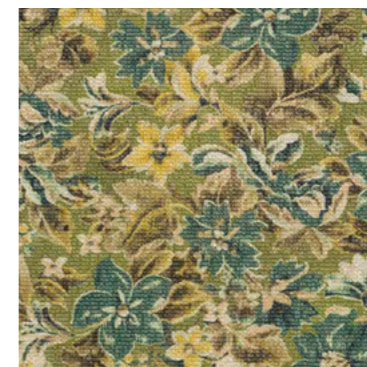
19603-144



19603-255



19603-556



19603-716

SELECT ALL

OVERVIEW

ETAMINE
PARIS

NAME Saint-Rémy
ARTICLE NUMBER 19603
CATEGORY Upholstery

FABRIC WIDTH 140 cm Usable Width: 135 cm
MATERIAL 46% WV, 21% CV, 10% PES, 10% LI, 10% CO, 3% PA
MARTINDALE 45.000

PROPERTIES
CARE INSTRUCTIONS

SAINT-RÉMY is a bouclé fabric, woven and digitally printed in Italy.



Valbonne



19604-145



19604-585



19604-654



19604-891

OVERVIEW

ETAMINE
PARIS

NAME Valbonne
ARTICLE NUMBER 19604
CATEGORY Upholstery

FABRIC WIDTH 140 cm
MATERIAL 90% PP, 10% PES
MARTINDALE 30.000

PROPERTIES
CARE INSTRUCTIONS

A modernist chevron, VALBONNE plays with color and boasts large vertical stripes. Reinterpreted in jacquard, it is interwoven with elegant, near-natural structured yarn.



19604-895

SELECT ALL

OVERVIEW

ETAMINE

PARIS

NAME

Valbonne

ARTICLE NUMBER

19604

CATEGORY

Upholstery

FABRIC WIDTH

140 cm

MATERIAL

90% PP, 10% PES

MARTINDALE

30.000

PROPERTIES



CARE INSTRUCTIONS





OVERVIEW

Juan-Les-Pins

ETAMINE

PARIS



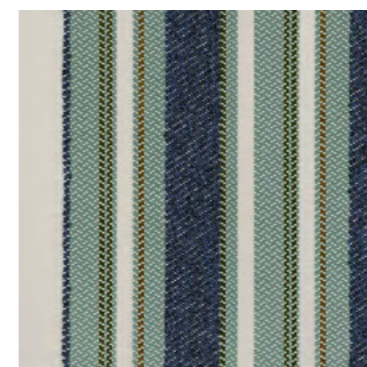
19605-145



19605-585



19605-735



19605-755

NAME Juan-Les-Pins
ARTICLE NUMBER 19605
CATEGORY Upholstery

FABRIC WIDTH 140 cm
MATERIAL 85% PP, 15% PES
MARTINDALE 40.000

PROPERTIES
CARE INSTRUCTIONS

A stripe inspired by a parasol motif, JUAN-LES-PINS conjures the old-world charm of beaches near the Grand Hotel.

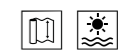
OVERVIEW

ETAMINE

PARIS

NAME Juan-Les-Pins
ARTICLE NUMBER 19605
CATEGORY Upholstery

FABRIC WIDTH 140 cm
MATERIAL 85% PP, 15% PES
MARTINDALE 40.000

PROPERTIES 
CARE INSTRUCTIONS 



19605-891

SELECT ALL



Menton



19606-145



19606-735



19606-755



19606-891

OVERVIEW

ETAMINE

PARIS

NAME Menton
ARTICLE NUMBER 19606
CATEGORY Upholstery

FABRIC WIDTH 140 cm
MATERIAL 88% PP, 12% PES
MARTINDALE 30.000

PROPERTIES
CARE INSTRUCTIONS

Inspired by 1960s wallpapers, MENTON plays with polychromatic colors. The weft threads of naturally structured yarn reveal the alchemy behind the Etamine Paris design palette.

OVERVIEW

ETAMINE

PARIS

NAME
Menton

ARTICLE NUMBER
19606

CATEGORY
Upholstery

FABRIC WIDTH
140 cm

MATERIAL
88% PP, 12% PES

MARTINDALE
30.000

PROPERTIES



CARE INSTRUCTIONS



19606-895

SELECT ALL



OVERVIEW

Roquebrune



19607-556



19607-835







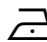

19607-991

SELECT ALL

ETAMINE
PARIS

NAME Roquebrune
ARTICLE NUMBER 19607
CATEGORY Upholstery

FABRIC WIDTH 140 cm
MATERIAL 87% PP, 13% PES
MARTINDALE 65.000

PROPERTIES 
CARE INSTRUCTIONS     

A bouclé woven fabric, ROQUEBRUNE is enhanced with a soft finish, and exhibits a wonderfully plump, structured look. This sophisticated bouclé guarantees excellent durability and is a highly robust upholstery fabric.



Nice



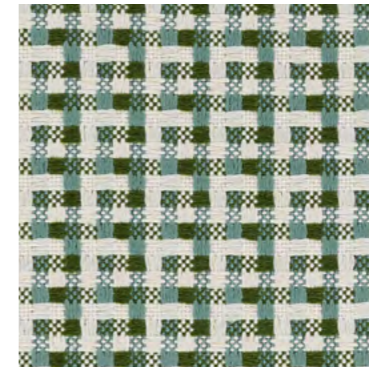
19608-192



19608-556



19608-564







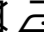

19608-673

OVERVIEW

ETAMINE
PARIS

NAME Nice
ARTICLE NUMBER 19608
CATEGORY Upholstery

FABRIC WIDTH 140 cm
MATERIAL 100% PP
MARTINDALE 50.000

PROPERTIES 
CARE INSTRUCTIONS     

Inspired by 1960s wallpapers, MENTON plays with polychromatic colors. The weft threads of naturally structured yarn reveal the alchemy behind the Etamine Paris design palette.





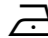

OVERVIEW

ETAMINE

PARIS

NAME Nice
ARTICLE NUMBER 19608
CATEGORY Upholstery

FABRIC WIDTH 140 cm
MATERIAL 100% PP
MARTINDALE 50.000

PROPERTIES 
CARE INSTRUCTIONS     



19608-990

SELECT ALL



OVERVIEW

Saint-Tropez

ETAMINE

PARIS



19609-175



19609-534



19609-556



19609-776

NAME Saint-Tropez
ARTICLE NUMBER 19609
CATEGORY Decoration

FABRIC WIDTH 300 cm ↑↓
MATERIAL 100% PAN
MARTINDALE

PROPERTIES
CARE INSTRUCTIONS

With a broad weave, SAINT-TROPEZ boasts graceful tennis stripes and offers both indoor and outdoor technical properties.

Its resistance to chlorinated and salt water, along with its excellent color fastness in both sunlight and bad weather, bears witness to the performance of this beautiful stripe. The weft yarns are delicately mottled and it is as soft as cashmere to the touch. SAINT-TROPEZ is so natural that decorators of refined interiors and exteriors will be unable to resist its charm.



OVERVIEW

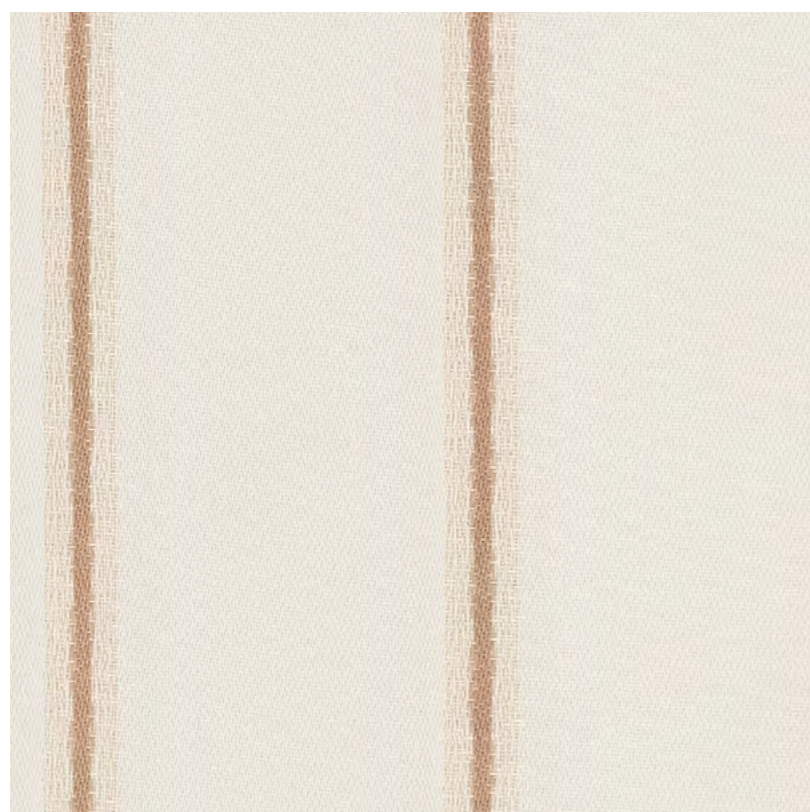
ETAMINE

PARIS

NAME Saint-Tropez
ARTICLE NUMBER 19609
CATEGORY Decoration

FABRIC WIDTH 300 cm ↑↓
MATERIAL 100% PAN
MARTINDALE

PROPERTIES 
CARE INSTRUCTIONS 



19609-881



19609-895

SELECT ALL



OVERVIEW

Alpilles

ETAMINE
PARIS



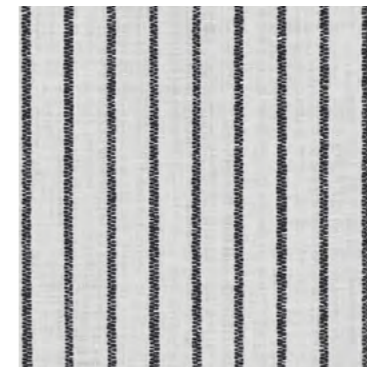
19610-913



19610-959



19610-981

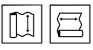



19610-995

SELECT ALL

NAME Alpilles
ARTICLE NUMBER 19610
CATEGORY Sheers

FABRIC WIDTH 300 cm ↑↓
MATERIAL 61% LI, 31% PAN, 4% WO, 4% PES
MARTINDALE

PROPERTIES semi-transparent 
CARE INSTRUCTIONS 

As light as air ... ALPILLES is characterized by its transparency and its iconic Etamine Paris fabric look. With a broad weave, ALPILLES is a striped fabric of linen and wool. It depicts textured, rhythmic stripes with a timeless elegance. A stone-washed finish lends softness and authenticity to contemporary interiors and large windows opening onto the outside world.

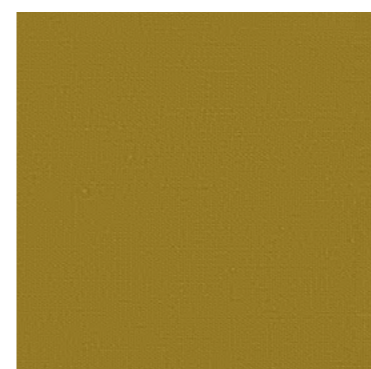


OVERVIEW

Ramatuelle

ETAMINE

PARIS



19611-115



19611-325



19611-336



19611-423

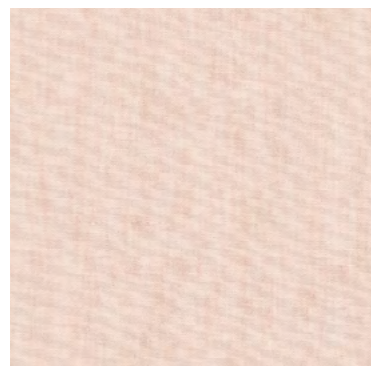
NAME Ramatuelle
ARTICLE NUMBER 19611
CATEGORY Decoration

FABRIC WIDTH 310 cm ↑↓
MATERIAL 40% LI, 38% WO, 22% PAN
MARTINDALE

PROPERTIES
CARE INSTRUCTIONS

RAMATUELLE is a fabric made with a linen warp and wool weft. In perfect harmony with the nuances of **FLEUR DE LAINE**, the range of yarn-dyed colors is a delicate and exclusive melange. Its gentle stone-washed finish leaves it soft and structured. It is sublime when hung.

OVERVIEW



19611-441



19611-443



19611-552



19611-555



19611-597



19611-661



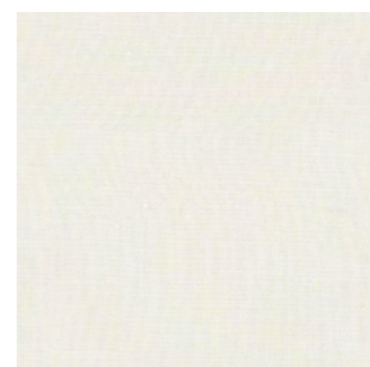
19611-664



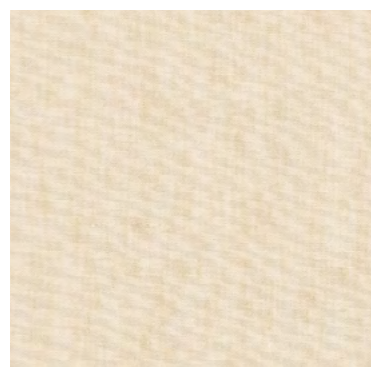
19611-665



19611-715



19611-880



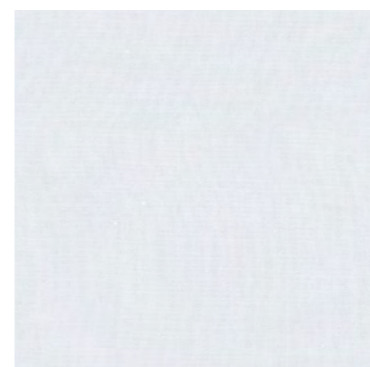
19611-881



19611-883



19611-885



19611-990



19611-991



19611-995

SELECT ALL

ETAMINE

PARIS

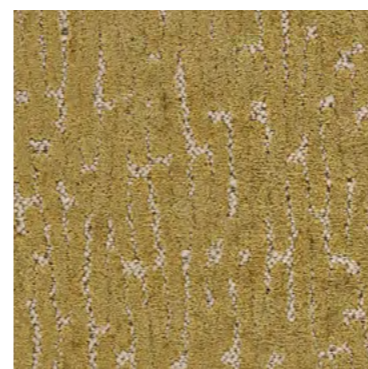
NAME Ramatuelle
ARTICLE NUMBER 19611
CATEGORY Decoration

FABRIC WIDTH 310 cm ↑↓
MATERIAL 40% LI, 38% WO, 22% PAN
MARTINDALE

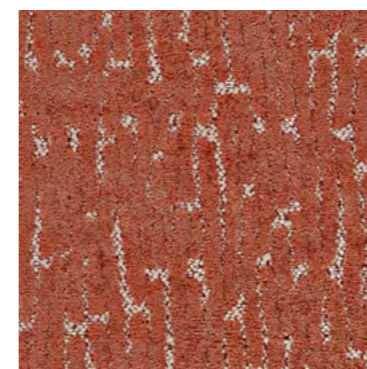
PROPERTIES
CARE INSTRUCTIONS



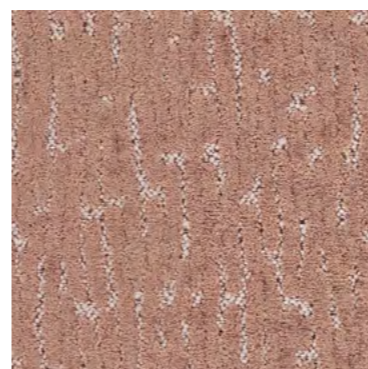
Arles



19612-175



19612-325



19612-443



19612-555

ETAMINE

PARIS

NAME Arles
ARTICLE NUMBER 19612
CATEGORY Upholstery

FABRIC WIDTH 130 cm
MATERIAL 40% CV, 22% PAN, 15% CO, 14% PES, 9% WO
MARTINDALE 100.000

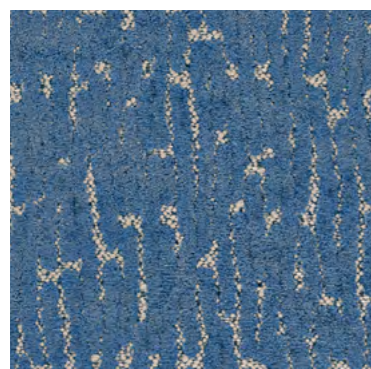
PROPERTIES
CARE INSTRUCTIONS

ARLES is a velvet woven in Belgium with a weft thread of bouclé yarn. Its stone-washed finishing roughens the pile to lend a shabby-chic look.

OVERVIEW

ETAMINE

PARIS



19612-558



19612-675



19612-881



19612-882



19612-883



19612-994

SELECT ALL

NAME Arles
ARTICLE NUMBER 19612
CATEGORY Upholstery

FABRIC WIDTH 130 cm
MATERIAL 40% CV, 22% PAN, 15% CO, 14% PES, 9% WO
MARTINDALE 100.000

PROPERTIES
CARE INSTRUCTIONS 

Order

COMPANY NAME

CUSTOMER NR

RING-SET (14-01236)

SHIP TO:

STREET

CITY / STATE / ZIP

ANY SPECIAL REQUEST

To submit your request: Please click the SAVE & SEND button, the PDF will be automatically attached to your email to us.

OVERVIEW

ETAMINE
PARIS

IMPRINT

Zimmer + Rohde GmbH
Zimmersmühlenweg 14-18
61440 Oberursel/Frankfurt
Germany

www.zimmer-rohde.com
info@zimmer-rohde.com
Phone +49 (0) 6171 632 02

CEO
Torsten Poschardt

HR Bad Homburg, HRB 5073
Ust-IdNr. DE 812 646 222

SAVE & SEND