



COUP DE
SOLEIL
COLLECTION 2022

ZR

ETAMINE
PARIS


CLICKBOOK

Overview

PLEIN SONGE	04
FLEUR DE LAINE RE	05
TERRE & MER	08
FLEURS FAUVES	09
LIBERTÉ FOLLE	11
CHANT DE L'EAU	12
FLOCON D'ÉTÉ	14
ESPRIT DE VENT RE	15
PÉTALE DE LIN	17

ETAMINE
PARIS



COUP DE SOLEIL

COLLECTION 2022

ETAMINE
PARIS

Against whitewashed walls and rough stone floor, the sun plays games with the flowers of an ETAMINE fabric and creates shadows that dance in the wind. Somewhere in Andalusia, in the studio of a French artist, the COUP DE SOLEIL collection by ETAMINE offers us a glimpse of the beauty of natural materials and the rich colours of its prints and embroideries.

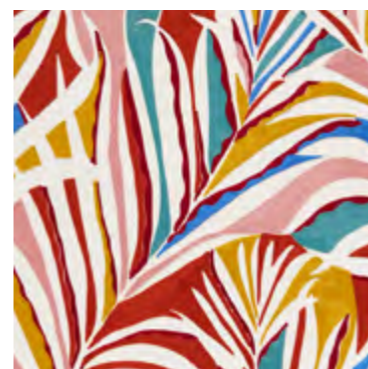
Like a painter's canvas, the CHANT DE L'EAU fabric offers us a depth of focus of an imaginary horizon thanks to a digital printing process that also reduces energy and water consumption. For ESPRIT DE VENT, the blend of cotton, linen and recycled fibres creates an open weave like a fishing net that gently entraps the light while the wild flowers of LIBERTÉ FOLLE throw themselves at a linen voile with a hand-washed finish that comes to us straight from the shores of Lake Como.

Who is the true creator, nature or the artist? ETAMINE steps away from the norm and projects its vision of the world in an imaginary dimension where shapes and fabrics blend and fuse. Wool fabric wraps itself around a piece of furniture to enhance its form, a voile fabric reaches out ephemerally into nature to create an illusion and reveal a gesture. The essence is light, nomadic and the stuff of dreams.

Caught in the last rays of the sun, the floral fabrics come to life, while at nightfall a star sparkles above the olive groves; it bears the beautiful name ETAMINE.



Plein Songe



19589-215



19589-246



19589-814

SELECT ALL*

This embroidered 100% linen fabric is a testimony of ETAMINE Paris' love of exuberant nature. The leaves blend and intertwine in a rhythmic dance until they form a whole. The embroidery work here is coded art and a true labour of love. Each leaf is embroidered in chain stitch with a matt cotton-like thread. The stitches delicately follow the direction of the shapes. The step from art to fabric is minute. Available in three colours.

OVERVIEW

ETAMINE
PARIS

NAME Plein Songe
ARTICLE NUMBER 19589
CATEGORY Decoration

FABRIC WIDTH 140 cm Usable Width: 136 cm
MATERIAL 100% LI, Embroidery: 90% PES, 10% PA
MARTINDALE

PROPERTIES
CARE INSTRUCTIONS

* By selecting this button you receive all colorways of this article



OVERVIEW

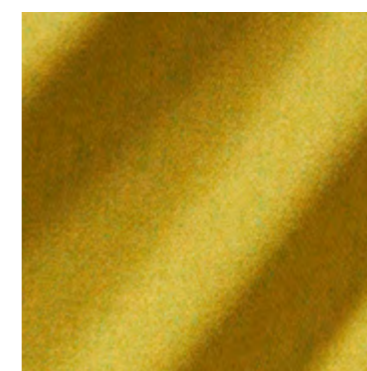
Fleur De Laine RE

ETAMINE

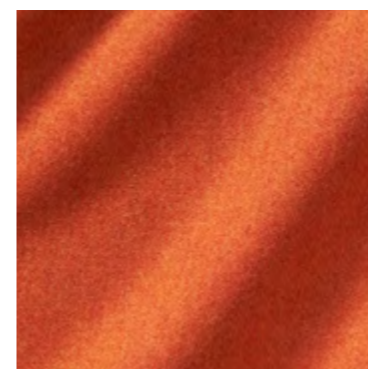
PARIS



19590-113



19590-173




19590-225



19590-286

NAME Fleur De Laine RE
ARTICLE NUMBER 19590
CATEGORY Decoration Upholstery

FABRIC WIDTH 145 cm
MATERIAL 70% WO, 20% PES, 5% PA, 5% AF (incl. 70% wool recycled)
MARTINDALE 100.000

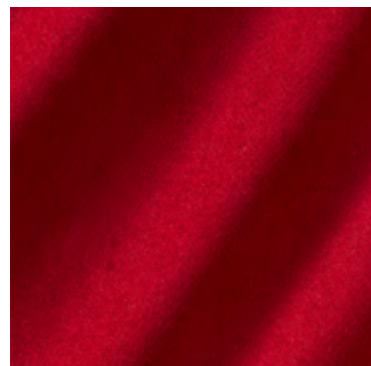
PROPERTIES 
CARE INSTRUCTIONS 

FLEUR DE LAINE RE is a recycled wool satin that is woven in Italy. The wool yarn is produced from recycled Italian luxury handicrafts.

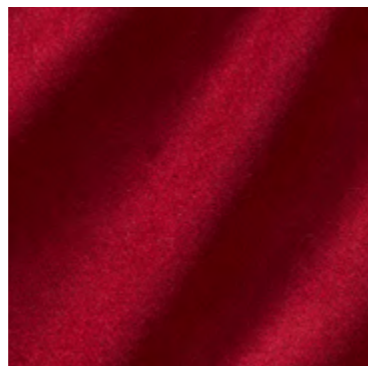
The 42 yarn-dyed colours in the collection are delicately mottled and exclusive and go perfectly with Pétale de LIN and LINA.

The soft finish combines all the elegance and quality of a wool satin. It is sublime as a curtain and very soft as an upholstery fabric. Its excellent pile and exceptional abrasion-resistance of 100,000 double rubs make **FLEUR DE LAINE RE** a must-have.

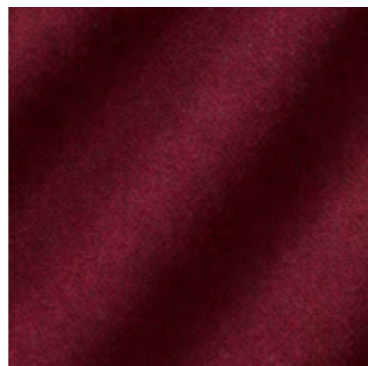
OVERVIEW



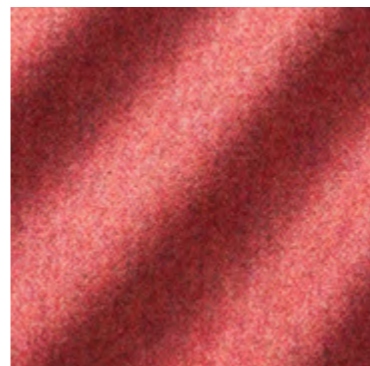
19590-334



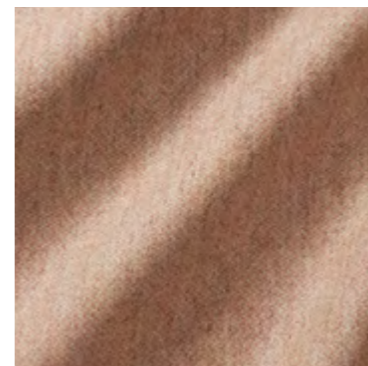
19590-335



19590-338



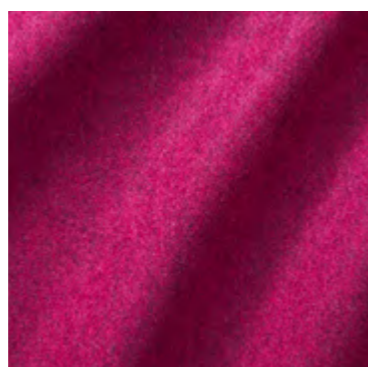
19590-425



19590-441



19590-442



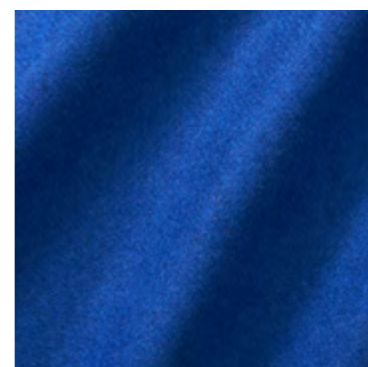
19590-446



19590-551



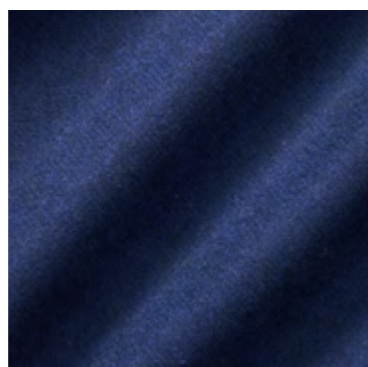
19590-552



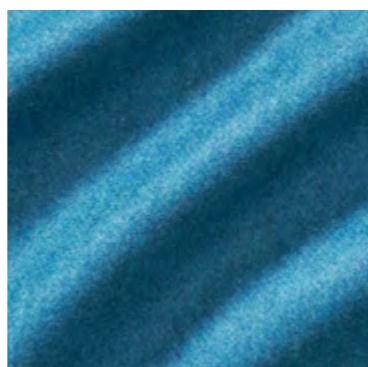
19590-553



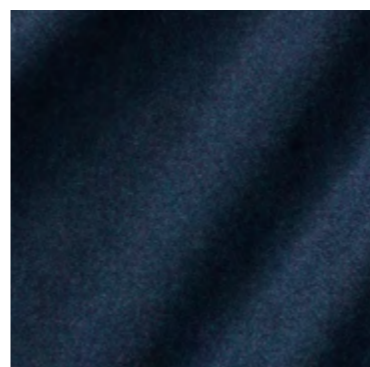
19590-554



19590-555



19590-565



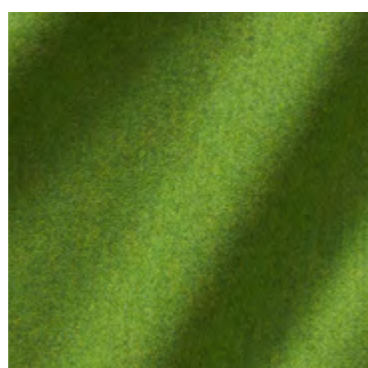
19590-579



19590-663



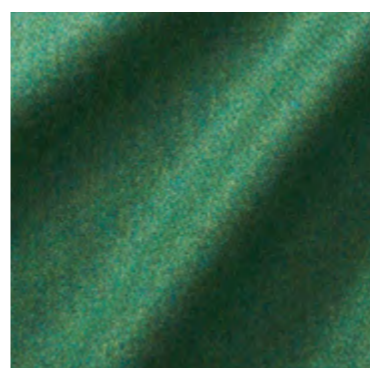
19590-665



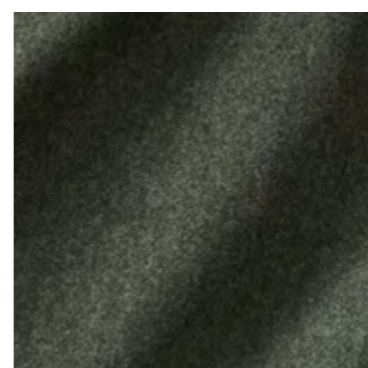
19590-715



19590-765



19590-776





19590-778

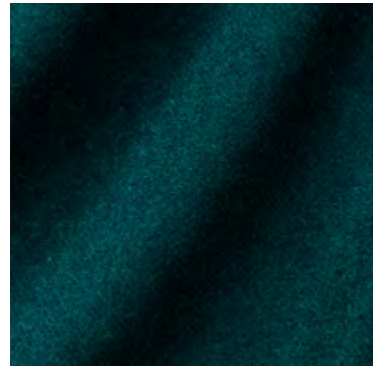
ETAMINE

PARIS

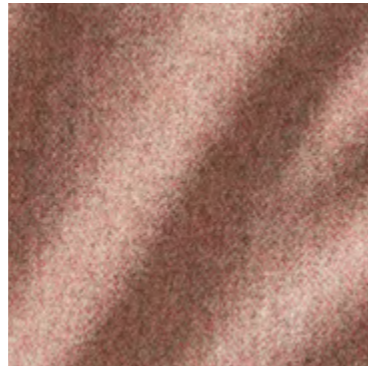
NAME Fleur De Laine RE
ARTICLE NUMBER 19590
CATEGORY Decoration Upholstery

FABRIC WIDTH 145 cm
MATERIAL 70% WO, 20% PES, 5% PA, 5% AF (incl. 70% wool recycled)
MARTINDALE 100.000

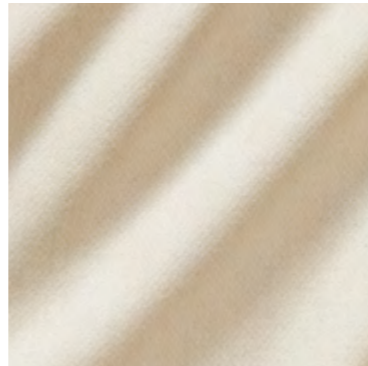
PROPERTIES 
CARE INSTRUCTIONS 



19590-779



19590-827



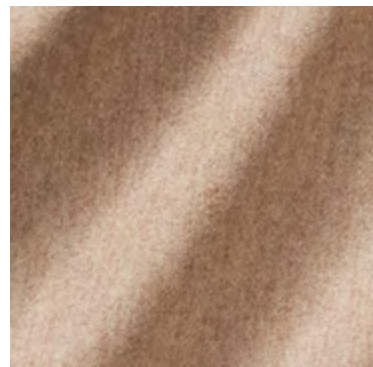
19590-880



19590-881



19590-882



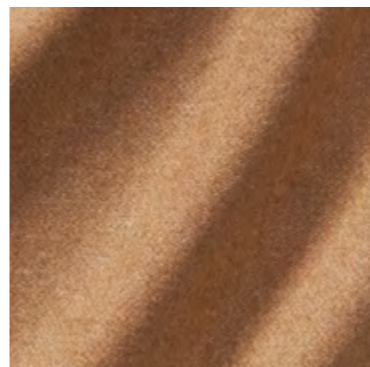
19590-883



19590-884



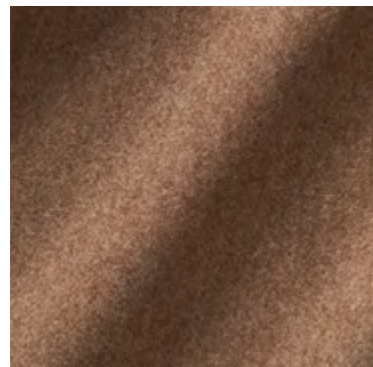
19590-885



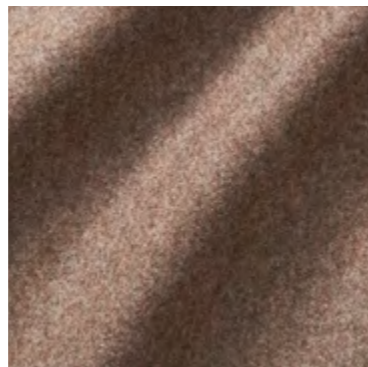
19590-886



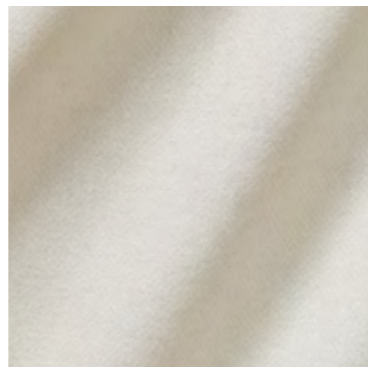
19590-887



19590-888



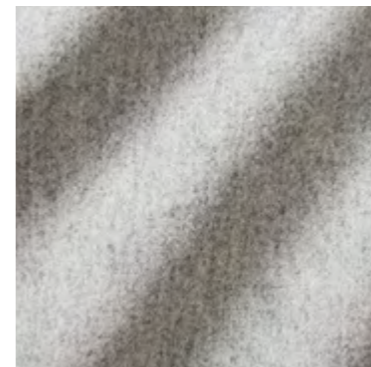
19590-889



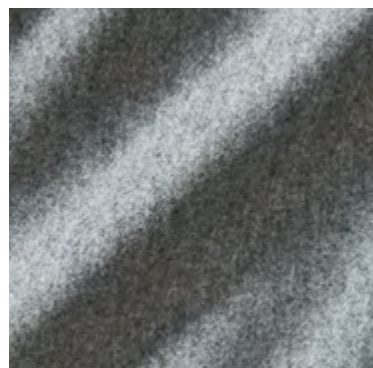
19590-990



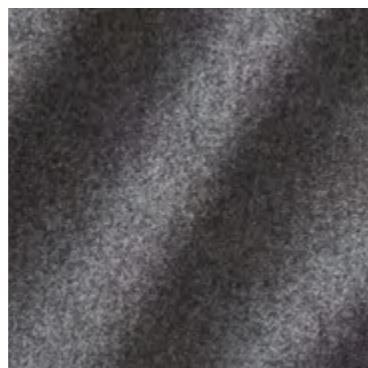
19590-991



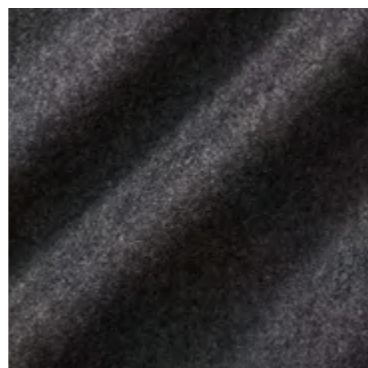
19590-992



19590-993



19590-994



19590-995

SELECT ALL

OVERVIEW

ETAMINE

PARIS

NAME Fleur De Laine RE
ARTICLE NUMBER 19590
CATEGORY Decoration Upholstery

FABRIC WIDTH 145 cm
MATERIAL 70% WO, 20% PES, 5% PA, 5% AF (incl. 70% wool recycled)
MARTINDALE 100.000

PROPERTIES 
CARE INSTRUCTIONS 



OVERVIEW

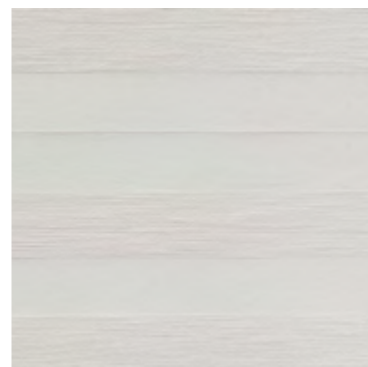
Terre & Mer



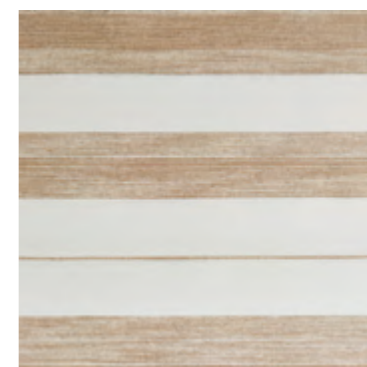
19591-913



19591-959



19591-981



19591-984

SELECT ALL

ETAMINE
PARIS

NAME

Terre & Mer

ARTICLE NUMBER

19591

CATEGORY

Decoration

FABRIC WIDTH

300 cm

MATERIAL

**80% LI, 18% PAN,
2% PES**

MARTINDALE

PROPERTIES



CARE INSTRUCTIONS



Woven in large widths, TERRE & MER is a striped linen made in Belgium. The exclusive weft yarn is the result of the professional expertise of a historic spinning mill located in the south of France. It creates a textured and rhythmic stripe with a timeless elegance.

A "Soft" finish adds a lovely soft feel and authenticity to modern interiors and large bay windows that open to the outside world.



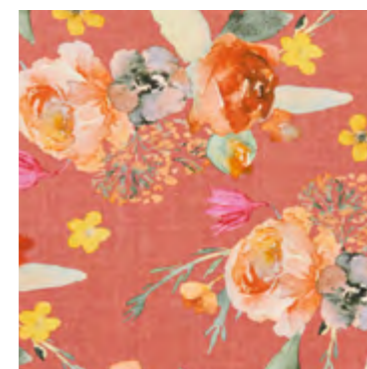
OVERVIEW

Fleurs Fauves

ETAMINE
PARIS



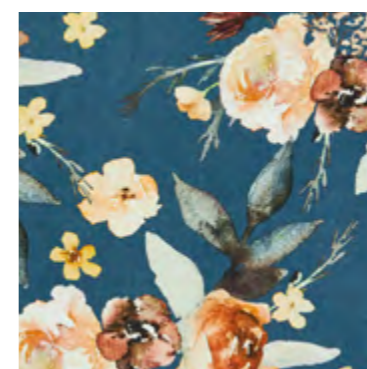
19592-124



19592-244









19592-482



19592-545

NAME Fleurs Fauves
ARTICLE NUMBER 19592
CATEGORY Decoration

FABRIC WIDTH 140 cm Usable Width: 136 cm
MATERIAL 100% LI
MARTINDALE

PROPERTIES Hand wash cold 
CARE INSTRUCTIONS     

The hand-painted FLEURS FAUVES print is a testimony to ETAMINE Paris' love of flowers.

Printed digitally at the gateway to Venice, Italy, on a 100% linen fabric, FLEURS FAUVES is a tableau of bouquets of cut roses that waltz across the linen. The "Basket Tumbler" finish adds a vintage air to the colours of the flowers and gives the linen an authentic fall.

OVERVIEW

ETAMINE

PARIS

NAME
Flours Fauves

ARTICLE NUMBER
19592

CATEGORY
Decoration

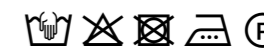
FABRIC WIDTH
140 cm
Usable Width: 136 cm

MATERIAL
100% LI

MARTINDALE

PROPERTIES
Hand wash cold 

CARE INSTRUCTIONS



19592-643

SELECT ALL



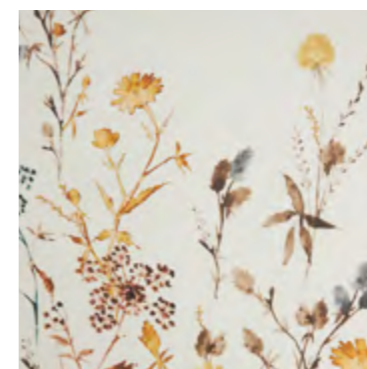
OVERVIEW

Liberté Folle

ETAMINE
PARIS



19593-744









19593-813

SELECT ALL

NAME Liberté Folle
ARTICLE NUMBER 19593
CATEGORY Sheers

FABRIC WIDTH 295 cm ↑↓
MATERIAL 100% LI
MARTINDALE

PROPERTIES 
CARE INSTRUCTIONS     

The LIBERTÉ FOLLE print is a panel pattern that is so very characteristic of the ETAMINE Paris collections.

Printed digitally on the shores of Lake Como in Italy on a 100% long-fibre linen fabric, LIBERTÉ FOLLE offers us a panorama of fresh flowers dancing mid-height against a wide white petal linen background. The hand-painted flowers are extremely delicate. The airbrush finish gives the linen a contemporary look and extremely soft feel. Natural and fresh, this fabric shows its best potential in interiors that open out onto gardens where nature has taken over.



Chant De L'Eau

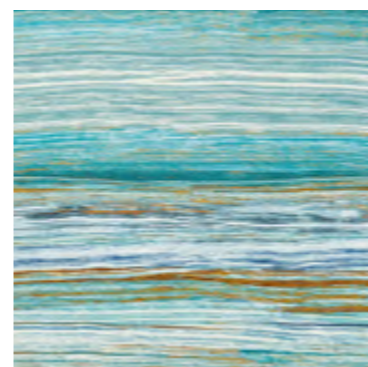
ETAMINE
PARIS



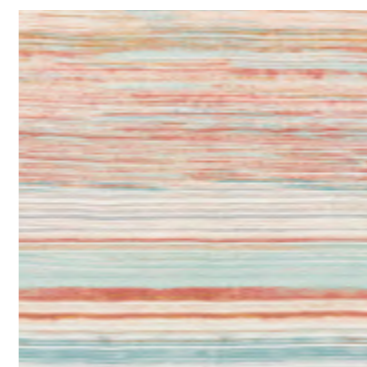
19594-184



19594-245



19594-575



19594-644

NAME Chant De L'Eau
ARTICLE NUMBER 19594
CATEGORY Decoration

FABRIC WIDTH 150 cm
MATERIAL 100% LI
MARTINDALE

PROPERTIES
CARE INSTRUCTIONS

CHANT DE L'EAU is living proof of ETAMINE Paris' passion for colour. Hand-painted and digitally printed in the Austrian mountains on 100% linen fabric, CHANT DE L'EAU takes us on a journey through all the light and shades of the Mediterranean Sea with its beautiful sunsets. Its unique character is the result of deconstructing the design into layers of delicately chosen colours. The soft finish lends the linen an air of elegance. It is timeless and its beauty will be brought to the fore in bright and airy settings.


OVERVIEW

ETAMINE

PARIS

NAME Chant De L'Eau
ARTICLE NUMBER 19594
CATEGORY Decoration

FABRIC WIDTH 150 cm
MATERIAL 100% LI
MARTINDALE

PROPERTIES
CARE INSTRUCTIONS 



19594-893

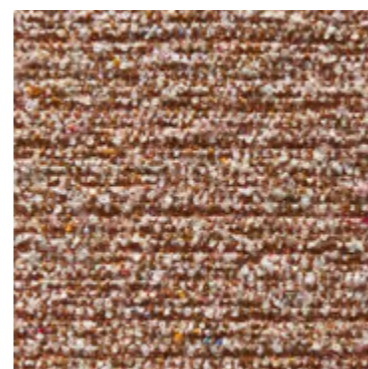
SELECT ALL



OVERVIEW

Flocon D'Été

ETAMINE
PARIS



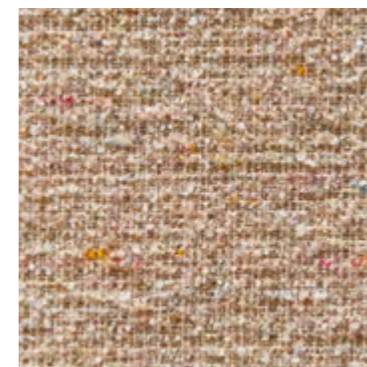
19595-285



19595-663



19595-880



19595-882

SELECT ALL

FLOCON D'ÉTÉ is a wool and linen bouclette woven in large widths on a dobby loom. These looms increase and decrease the number of warp and weft threads to create an open and textured weave.

The beauty of **FLOCON D'ÉTÉ** lies in the subtle choice of the threads to be woven: For the weft a curly wool yarn is space-dyed using a syringe resulting in a combination of eight subtle shades. Some are tone on tone, others contrasting. The extremely "Soft" finish guarantees a perfect fall and a luxurious cashmere-like feel. It can be used as a light curtain for a bay window or as a soft bedspread. **FLOCON D'ÉTÉ** enhances artisan interiors with its touch of discreet luxury.

NAME Flocon D'Été
ARTICLE NUMBER 19595
CATEGORY Decoration

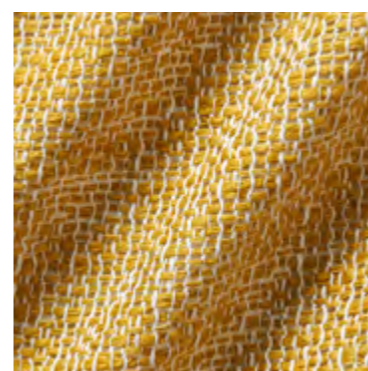
FABRIC WIDTH 300 cm
MATERIAL 47% PAN, 27% WO, 14% CO, 12% PES
MARTINDALE

PROPERTIES
CARE INSTRUCTIONS



Esprit De Vent RE

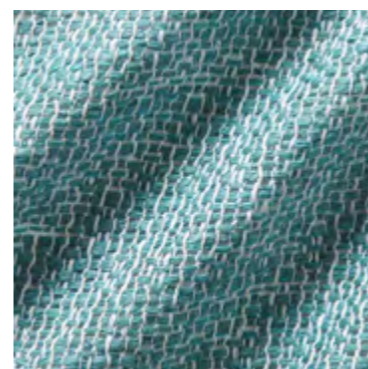
ETAMINE
PARIS



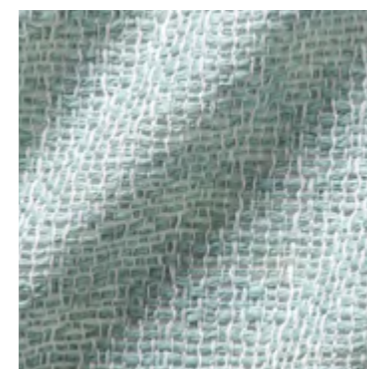
19596-116



19596-236



19596-565



19596-673

NAME Esprit De Vent RE
ARTICLE NUMBER 19596
CATEGORY Sheers

FABRIC WIDTH 300 cm
MATERIAL 63% PES, 30% CO, 7% LI (incl. 50% polyester recycled)
MARTINDALE

PROPERTIES
CARE INSTRUCTIONS

ESPRIT DE VENT RE juggles with different levels of transparency; sometimes light, sometimes raffia-like. Recycled and woven in large widths in English gauze: two warp threads are woven around the weft to produce a solid but crystalline fabric.

In the weft, a flamed cotton thread adds structure and character; in the warp, the synthetic fibres are made from recycled bottles and give the fabric its robust nature.

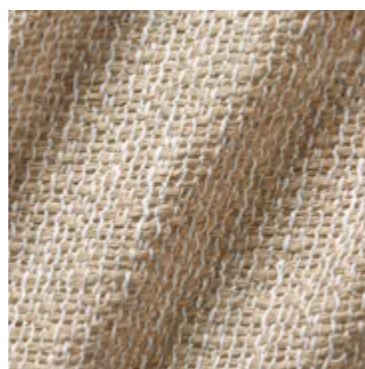
OVERVIEW



19596-881



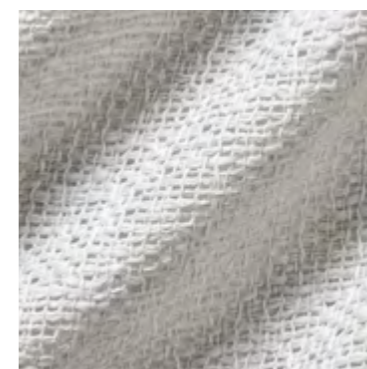
19596-882



19596-885



19596-981



19596-992

SELECT ALL

ETAMINE

PARIS

NAME Esprit De Vent RE
ARTICLE NUMBER 19596
CATEGORY Sheers

FABRIC WIDTH 300 cm
MATERIAL 63% PES, 30% CO, 7% LI (incl. 50% polyester recycled)
MARTINDALE

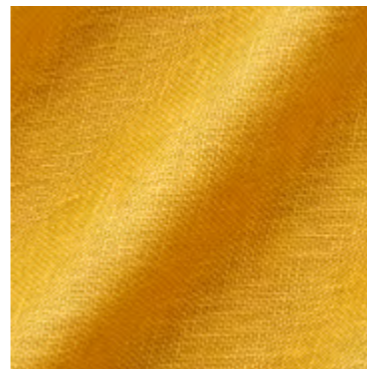
PROPERTIES
CARE INSTRUCTIONS



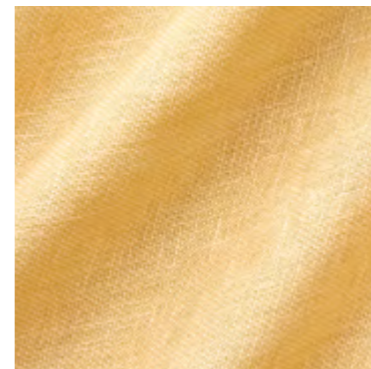
OVERVIEW

Pétale De Lin

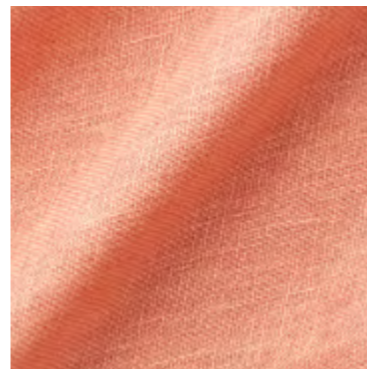
ETAMINE
PARIS



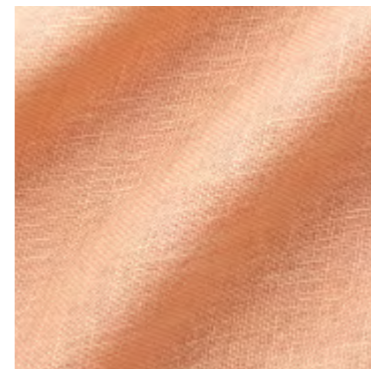
19597-214



19597-283



19597-325



19597-434

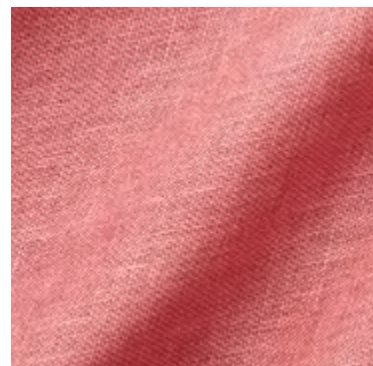
NAME Pétale De Lin
ARTICLE NUMBER 19597
CATEGORY Sheers

FABRIC WIDTH 300 cm ↑↓
MATERIAL 100% LI
MARTINDALE

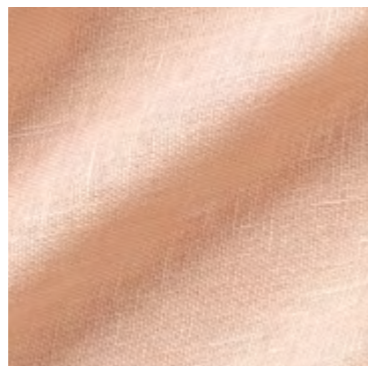
PROPERTIES
CARE INSTRUCTIONS

As light as air... PÉTALE DE LIN is woven in large widths and is washable. The voile is made from 100% linen that is farmed and produced in France. The deliberately chosen long linen fibres are a guarantee of longevity and quality. It is woven in the Vosges then dyed in 24 exclusive shades in the north of France. The soft and exceptional feel is the result of a pre-hand-washed finish that softens and stabilises the linen giving it a fluid and light fall. PÉTALE DE LIN creates a sense of well-being in your home. It is a natural insulator in winter creating a lovely warm ambiance. And in summer, its airy characteristic offers a refreshing touch. It is naturally hypoallergenic, antifungal and antibacterial, making it a great asset as a décor for restful interiors.

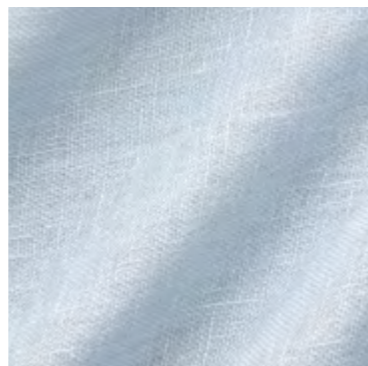
OVERVIEW



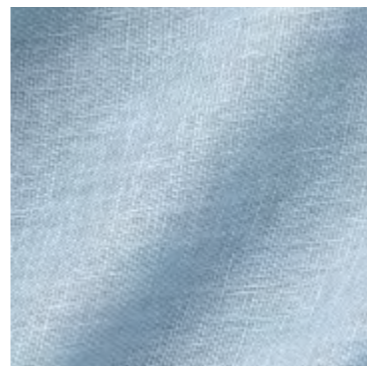
19597-445



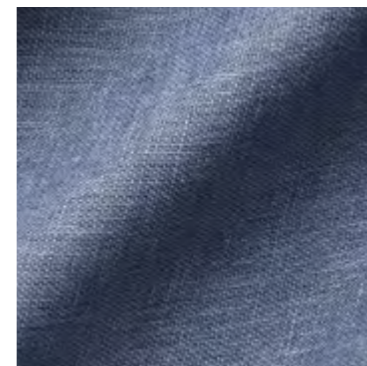
19597-483



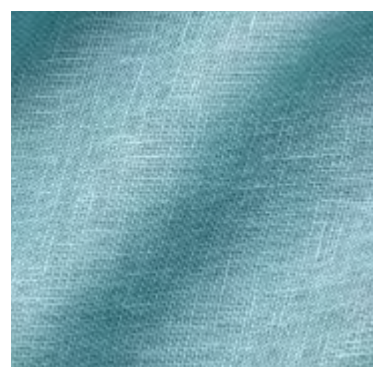
19597-564



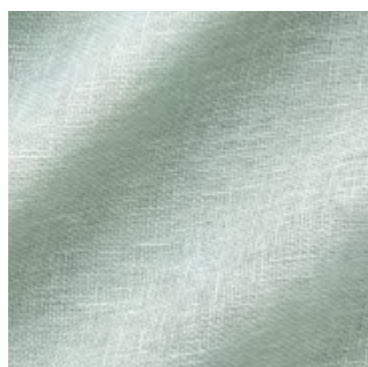
19597-565



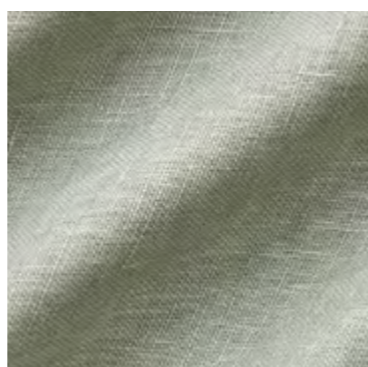
19597-597



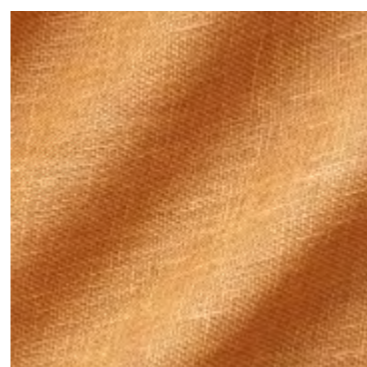
19597-697



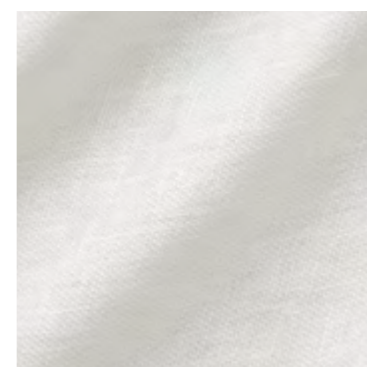
19597-774



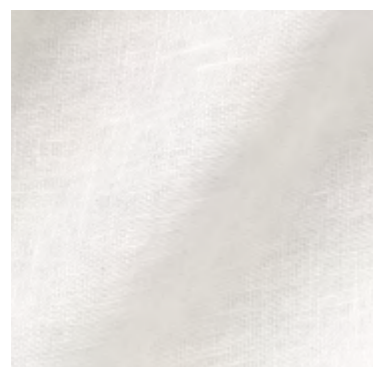
19597-786



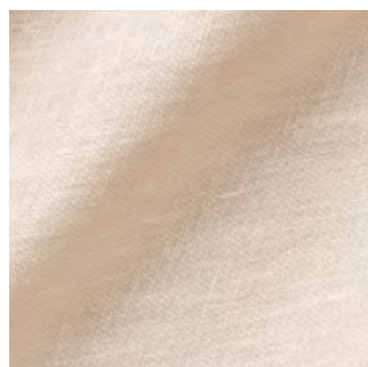
19597-827



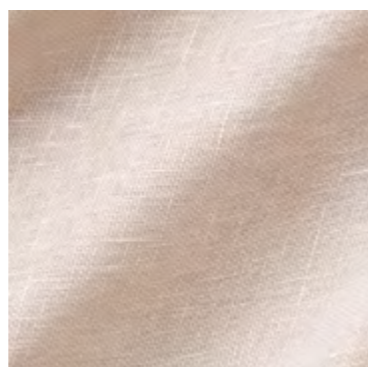
19597-880



19597-881



19597-882



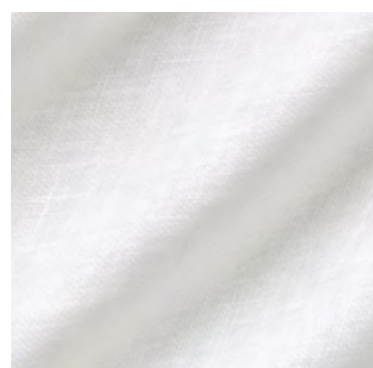
19597-883



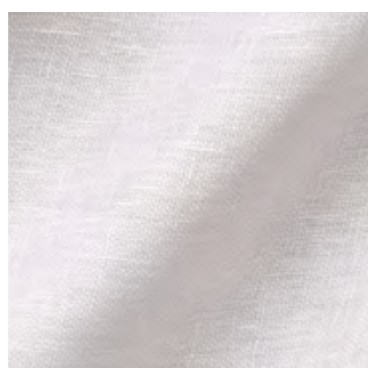
19597-884



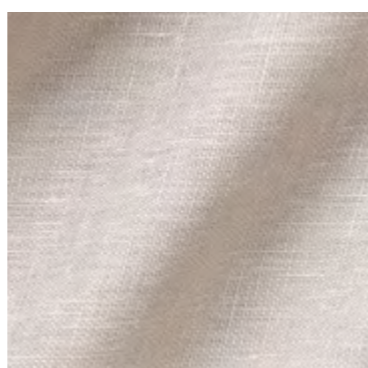
19597-885



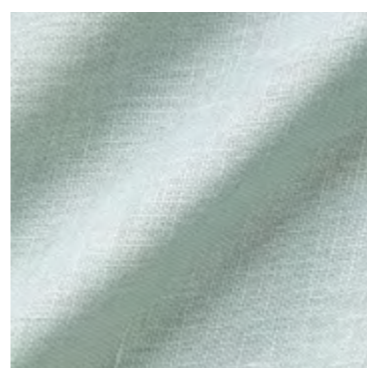
19597-990



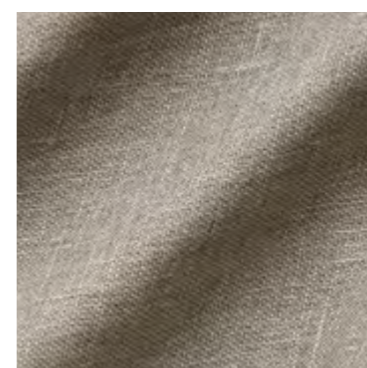
19597-991



19597-992



19597-994



19597-995

ETAMINE

PARIS

NAME Pétale De Lin
ARTICLE NUMBER 19597
CATEGORY Sheers

FABRIC WIDTH 300 cm ↑↓
MATERIAL 100% LI
MARTINDALE

PROPERTIES
CARE INSTRUCTIONS

SELECT ALL

Order

COMPANY NAME

CUSTOMER NR

RING-SET (14-01236)

SHIP TO:

STREET

CITY / STATE / ZIP

ANY SPECIAL REQUEST

To submit your request: Please click the SAVE & SEND button, the PDF will be automatically attached to your email to us.

OVERVIEW

ETAMINE
PARIS

IMPRINT

Zimmer + Rohde GmbH
Zimmersmühlenweg 14-18
61440 Oberursel/Frankfurt
Germany

www.zimmer-rohde.com
info@zimmer-rohde.com
Phone +49 (0) 6171 632 02

CEO
Torsten Poschardt

HR Bad Homburg, HRB 5073
Ust-IdNr. DE 812 646 222

SAVE & SEND