



ZR

TRAVERS

NEW YORK

 **CLICKBOOK**

# Overview

Chenglei Dragon	04	Sheldon	14
Mahara	05	Keegan Flame	16
Kandira	06	Zebra Strie Velvet	17
Anya	07		
Rolling Hills	08		
Antigua	09		
Josephine	10		
Passage Stripe	11		
Astrid	12		

**TRAVERS**  
NEW YORK



## Voyager

“Travelling – it renders you speechless, then turns you into a storyteller.” (Ibn Battuta).

One of the richest sources of inspiration, not only for creative minds, is travel.

Every journey grants us long-lasting impressions and the opportunity to see the world from a different point of view. Suffused in a different light, different colors, scents, tastes and sounds and, of course, different people. From all these travels we return with wonderful memories and fashion them into stories we like to share with others. The VOYAGER collection is like a visit to the home of a well-travelled collector. Every single design has a travel story to tell: in fabric.

Textile gems, inspired by the impressions of diverse cultures and continents from Asia to Africa: all have in common beautiful patterns, ornaments, colors and shapes, culminating in a stylishly curated work of art. Traditional motifs, reinterpreted for the new TRAVERS collection, on innovative fabrics in contemporary interior colors, invite us to play mix and match. Whether oriental-style allover prints like MAHARA and KANDIRA, mythological Asian creatures on the two-tone damask CHENGLEI DRAGON or Caribbean-inspired embroideries of a shimmering coral world on ANTIGUA. The collected memories become unforgettable souvenirs of lived experiences through the playful combination of colors, patterns and appealing transparencies. Mementos from long and distant journeys become a deliberate stylistic device and showcase a modern vintage character.

VOYAGER whisks us away on an unforgettable journey through the cultural diversity of distant lands.

# TRIVERS

NEW YORK



# Chenglei Dragon

OVERVIEW

## TRAVERS

NEW YORK

NAME

**Chenglei Dragon**

ARTICLE NUMBER

**44192**

CATEGORY

**Decoration**

FABRIC WIDTH

**140 cm**

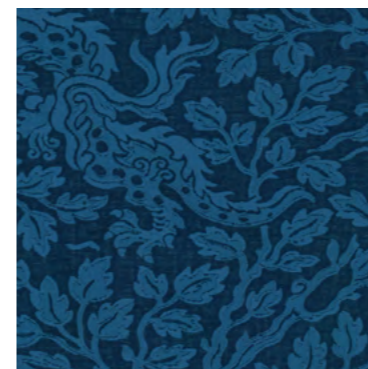
MATERIAL

**35% LI, 34% CV, 31% PES**

MARTINDALE

PROPERTIES

CARE INSTRUCTIONS



44192-558



44192-593



44192-885



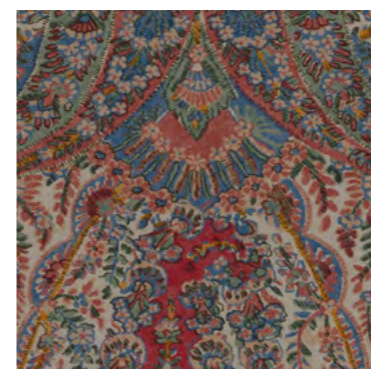
44192-993

SELECT ALL

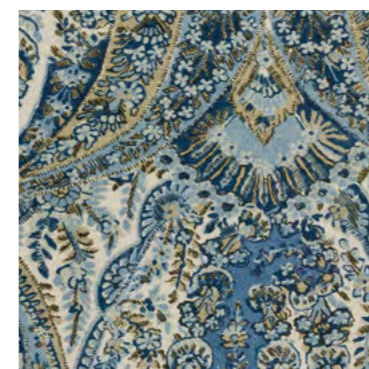
The dragon is a symbol for luck, peace and long life in Asian culture – and the creative impulse for the design of CHENGLEI DRAGON, a two-colored satin weave with an Asian-inspired all-over dragon design. Woven on a very fine silk-like warp as an elaborate Jacquard, the auspicious mythical creatures cavort through a dense background of leaf work. After weaving, the fabric is finished with a gentle brush, giving it a modern, softly flowing character and a wonderfully soft feel.



# Mahara



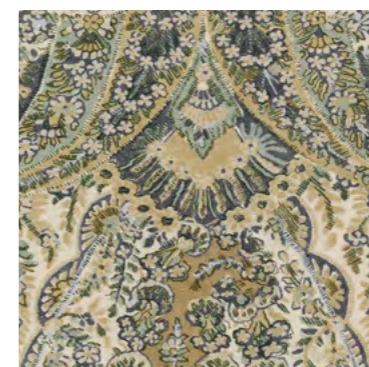
44193-376



44193-587



44193-645



44193-863

SELECT ALL

OVERVIEW

## TRAVERS

NEW YORK

NAME

**Mahara**

ARTICLE NUMBER

**44193**

CATEGORY

**Decoration**

FABRIC WIDTH

**140 cm**

MATERIAL

**64% LI, 36% CO**

MARTINDALE

PROPERTIES

CARE INSTRUCTIONS



The inspiration for this elegant cashmere design came from the border pattern of an antique Persian shawl. The distinctively rich color effect is one of a kind, with each color composed of several different shades. The brilliant and finely detailed motifs are printed on a classic, natural semi-linen base.



# Kandira



44194-535



44194-675



44184-865

SELECT ALL

OVERVIEW

## TRAVERS

NEW YORK

NAME

**Kandira**

ARTICLE NUMBER

**44194**

CATEGORY

**Upholstery  
Decoration**

FABRIC WIDTH

**130 cm**

MATERIAL

**50% CV, 29% CO, 21% PES**

MARTINDALE

**45.000**

PROPERTIES

CARE INSTRUCTIONS



The oriental-style all-over print was influenced by the ornamental richness of the Silk Road. It is printed digitally on a velvety soft chenille fabric. The three-dimensional woven structure, in combination with the soft contours of the digital print, result in a laidback vintage character available in three modern colorways.



# Anya



44195-476



44195-586



44195-674



44195-895

SELECT ALL

ANYA is a prime example of an increasingly rare form of textile craftsmanship. The large-format Jacobean design is already applied to the fine cotton warp before the weaving process begins. In the elaborate warp printing technique, the warp threads shift slightly in relation to each other during weaving, creating an intentionally blurred effect of the multicolored motifs. The result: a deliberately stunning decorative creation whose charm lies in its imperfection.

OVERVIEW

## TRIVERS

NEW YORK

NAME <b>Anya</b>
ARTICLE NUMBER <b>44195</b>
CATEGORY <b>Decoration</b>

FABRIC WIDTH <b>135 cm</b> <b>Usable Width: 129 cm</b>
MATERIAL <b>55% CO, 45% CV</b>
MARTINDALE

PROPERTIES
CARE INSTRUCTIONS 



# Rolling Hills

**TRAVERS**  
NEW YORK



44196-586



44196-754



44196-895

SELECT ALL

NAME <b>Rolling Hills</b>
ARTICLE NUMBER <b>44196</b>
CATEGORY <b>Decoration</b>

FABRIC WIDTH <b>140 cm</b>
MATERIAL <b>100% CO</b> <b>Embroidery: 100% CV</b>
MARTINDALE

PROPERTIES 
CARE INSTRUCTIONS 

A modern take on classic depictions of Asian landscapes as an impressive block stripe design. Opulent and abstract at the same time. The imaginatively designed motifs within the blocks were embroidered with the finest viscose yarns, in an unusually high thread density on the elegant cotton sateen. ROLLING HILLS is available in three colorways.





# Antigua



44197-893

SELECT ALL

OVERVIEW

## TRAVERS

NEW YORK

NAME

**Antigua**

ARTICLE NUMBER

**44197**

CATEGORY

**Decoration**

FABRIC WIDTH

**140 cm**

**Usable Width: 130 cm**

MATERIAL

**75% CO, 25 %LI**

**Embroidery: 40% LI,**

**35% CO, 15% MTF 10%CV**

MARTINDALE

PROPERTIES



CARE INSTRUCTIONS



ANTIGUA is a masterpiece of craftsmanship. The Caribbean-inspired motifs whisk us away to an artist's impression of the underwater world, filled with metallic-shimmering corals and fish, whose details are lovingly highlighted in beadwork. Here, creative power and artistry come together to form one of the highlights of the collection. Each individual motif was embroidered by hand using a different embroidery technique on the naturally structured base fabric.



# Josephine



44198-595



44198-892



44198-998

SELECT ALL

OVERVIEW

## TRAVERS

NEW YORK

NAME

**Josephine**

ARTICLE NUMBER

**44198**

CATEGORY

**Sheers**

FABRIC WIDTH

**290 cm**

MATERIAL

**100% LI**

MARTINDALE

PROPERTIES



CARE INSTRUCTIONS



The reinterpretation of the classic damask motif as a semi-transparent double weave adds summery lightness to the decorative all-over design. Its soft and casual drape underlines the natural effect of the floor-length linen fabric JOSEPHINE.



# Passage Stripe

OVERVIEW

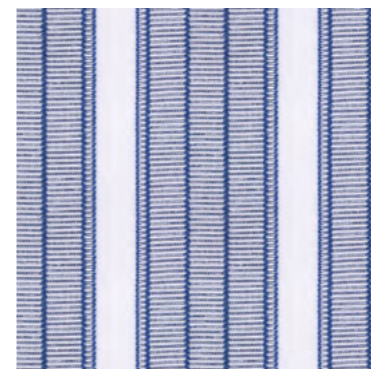
## TRAVERS

NEW YORK

NAME  
**Passage Stripe**

ARTICLE NUMBER  
**44199**

CATEGORY  
**Sheers**



44199-594



44199-892



44199-990

SELECT ALL

FABRIC WIDTH  
**300 cm** ↑↓

MATERIAL  
**86% PES, 8% LI, 6% CV**

MARTINDALE

PROPERTIES



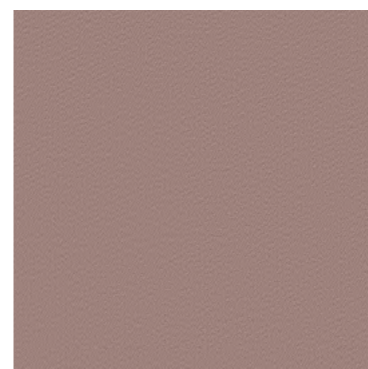
CARE INSTRUCTIONS



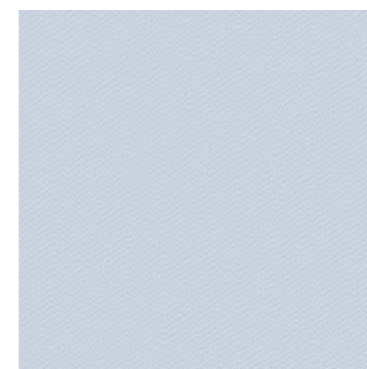
**PASSAGE STRIPE** can best be described as a decorative block stripe design utilizing the 'scherli' technique on a translucent linen base fabric. The fabric, which is double width, can be used both as a vertical or horizontal stripe, enabling you to heighten or reduce the visual size of a room, according to your desires. Either way, the effect will be tasteful, aesthetically pleasing and up to the minute.



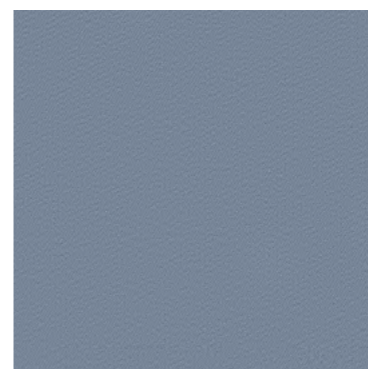
# Astrid



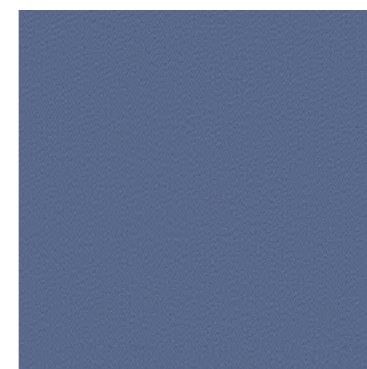
44200-444



44200-553



44200-555



44200-557

OVERVIEW

## TRAVERS

NEW YORK

NAME  
**Astrid**

ARTICLE NUMBER  
**44200**

CATEGORY  
**Decoration**

FABRIC WIDTH  
**140 cm**

MATERIAL  
**100% WO**

MARTINDALE  
**35.000**

PROPERTIES

CARE INSTRUCTIONS

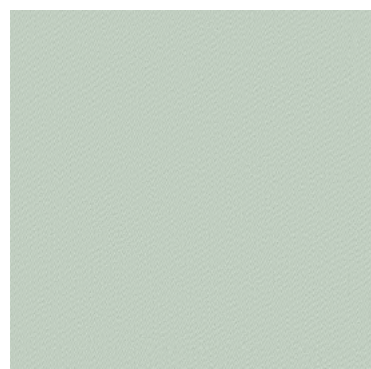


ASTRID, a sophisticated woolen satin weave with a flowing soft drape is perfect as a décor fabric as well as a durable upholstery fabric. The elegant shine is an inimitable characteristic of the high-quality wool yarn. The handsome classic makes a stylish statement in any ambience, whether as a window treatment or as an upholstery fabric for any kind of furniture.

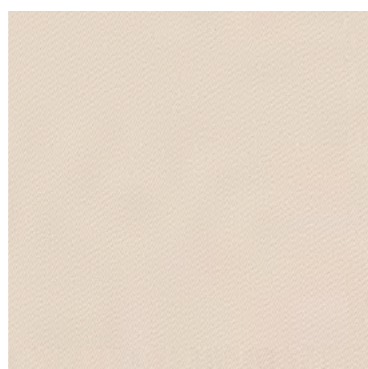
OVERVIEW

# TRAVERS

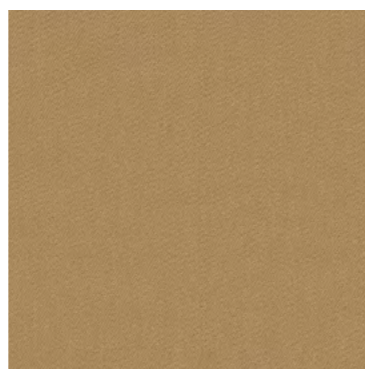
NEW YORK



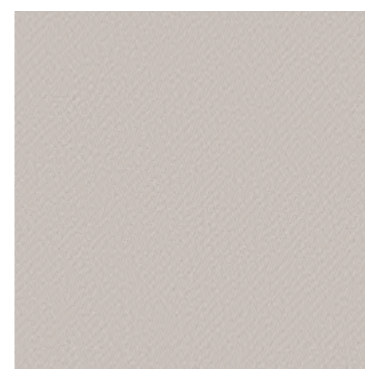
44200-663



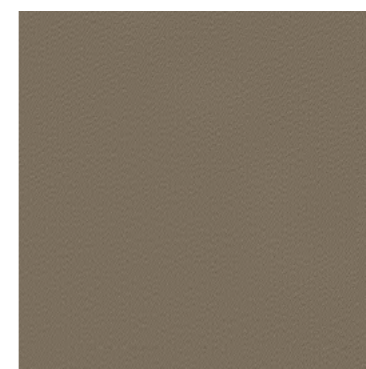
44200-891



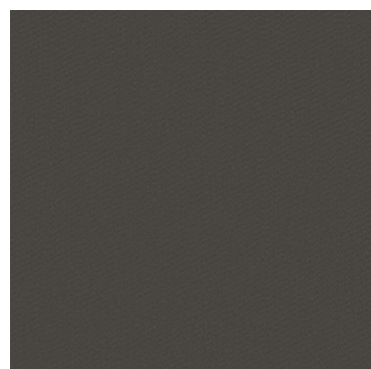
44200-893



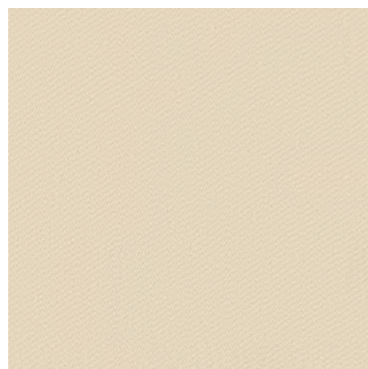
44200-982



44200-984



44200-989



44200-990

SELECT ALL

NAME <b>Astrid</b>
ARTICLE NUMBER <b>44200</b>
CATEGORY <b>Decoration</b>

FABRIC WIDTH <b>140 cm</b>
MATERIAL <b>100% WO</b>
MARTINDALE <b>35.000</b>

PROPERTIES
CARE INSTRUCTIONS 



# Sheldon



44201-443



44201-553



44201-557



44201-664

OVERVIEW

## TRAVERS

NEW YORK

NAME

**Sheldon**

ARTICLE NUMBER

**44201**

CATEGORY

**Upholstery**

FABRIC WIDTH

**140 cm**

MATERIAL

**Ground: 100% CO**

**Pile: 100% LI**

MARTINDALE

**35.000**

PROPERTIES

CARE INSTRUCTIONS



SHELDON is a pure-linen velour with a naturally dry touch. The fine flame structure underscores the natural linen look and provides the surface with texture and a relief effect. Available in 10 attractive on-trend colorways, from beige to rosé.

OVERVIEW

# TRIVERS

NEW YORK



44201-882



44201-885



44201-986



44201-990



44201-996



44201-999

SELECT ALL

NAME <b>Sheldon</b>
ARTICLE NUMBER <b>44201</b>
CATEGORY <b>Upholstery</b>

FABRIC WIDTH <b>140 cm</b>
MATERIAL <b>Ground: 100% CO</b> <b>Pile: 100% LI</b>
MARTINDALE <b>35.000</b>

PROPERTIES
CARE INSTRUCTIONS 



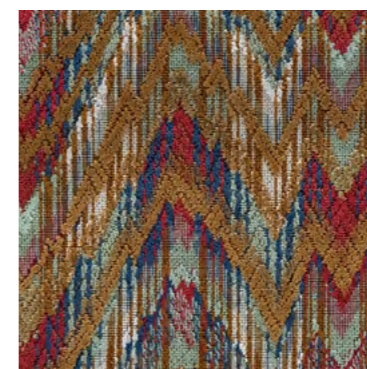
# Keegan Flame

**TRIVERS**

NEW YORK



44202-598



44202-836



44202-984

SELECT ALL

NAME <b>Keegan Flame</b>
ARTICLE NUMBER <b>44202</b>
CATEGORY <b>Upholstery</b>

FABRIC WIDTH <b>140 cm</b>
MATERIAL <b>Ground: 50% PES, 50% CO Pile: 70% CV, 30% CO</b>
MARTINDALE <b>100.000</b>

PROPERTIES 
CARE INSTRUCTIONS 

KEEGAN FLAME is the luxury velour version of a classic "Flame-Stitch" design. The elegantly shimmering "cut and loop" surface really makes every single color in the multicolored design sing. With a vintage look to top it all off.





# Zebra Strie Velvet

OVERVIEW

## TRAVERS

NEW YORK

NAME  
**Zebra Strie Velvet**

ARTICLE NUMBER  
**44203**

CATEGORY  
**Upholstery**

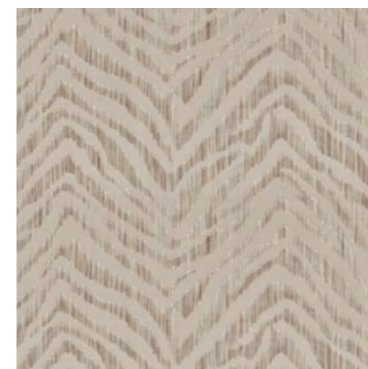
FABRIC WIDTH  
**140 cm**

MATERIAL  
**Ground: 100% CO  
Pile: 100% CV**

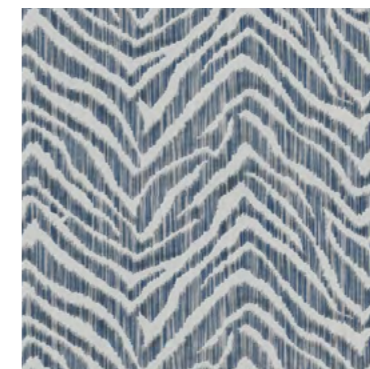
MARTINDALE  
**75.000**

PROPERTIES

CARE INSTRUCTIONS



44203-883



44203-984



44203-998

SELECT ALL

The elegance of this sophisticated velour fabric with its fine satin base lies in the clever abstract take on the zebra stripe pattern. The velvety motifs are arranged on a strié surface in earthy color nuances. This gives the exquisite upholstery fabric a modern, lively and exotic character.

# Order

COMPANY NAME

---

CUSTOMER NR

---

RING-SET (14-01236)

SHIP TO:

STREET

---

CITY / STATE / ZIP

---

ANY SPECIAL REQUEST

TO SUBMIT YOUR REQUEST: PLEASE CLICK THE SAVE & SEND BUTTON,  
THE PDF WILL BE AUTOMATICALLY ATTACHED TO YOUR EMAIL TO US.

OVERVIEW

## TR AVERS

NEW YORK

IMPRINT

**Zimmer + Rohde GmbH**  
Zimmersmühlenweg 14-18  
61440 Oberursel/Frankfurt  
Germany

www.zimmer-rohde.com  
info@zimmer-rohde.com  
Phone +49 (0) 6171 632 02

**CEO**  
Torsten Poschardt

HR Bad Homburg, HRB 5073  
Ust-IdNr. DE 812 646 222

SAVE & SEND