

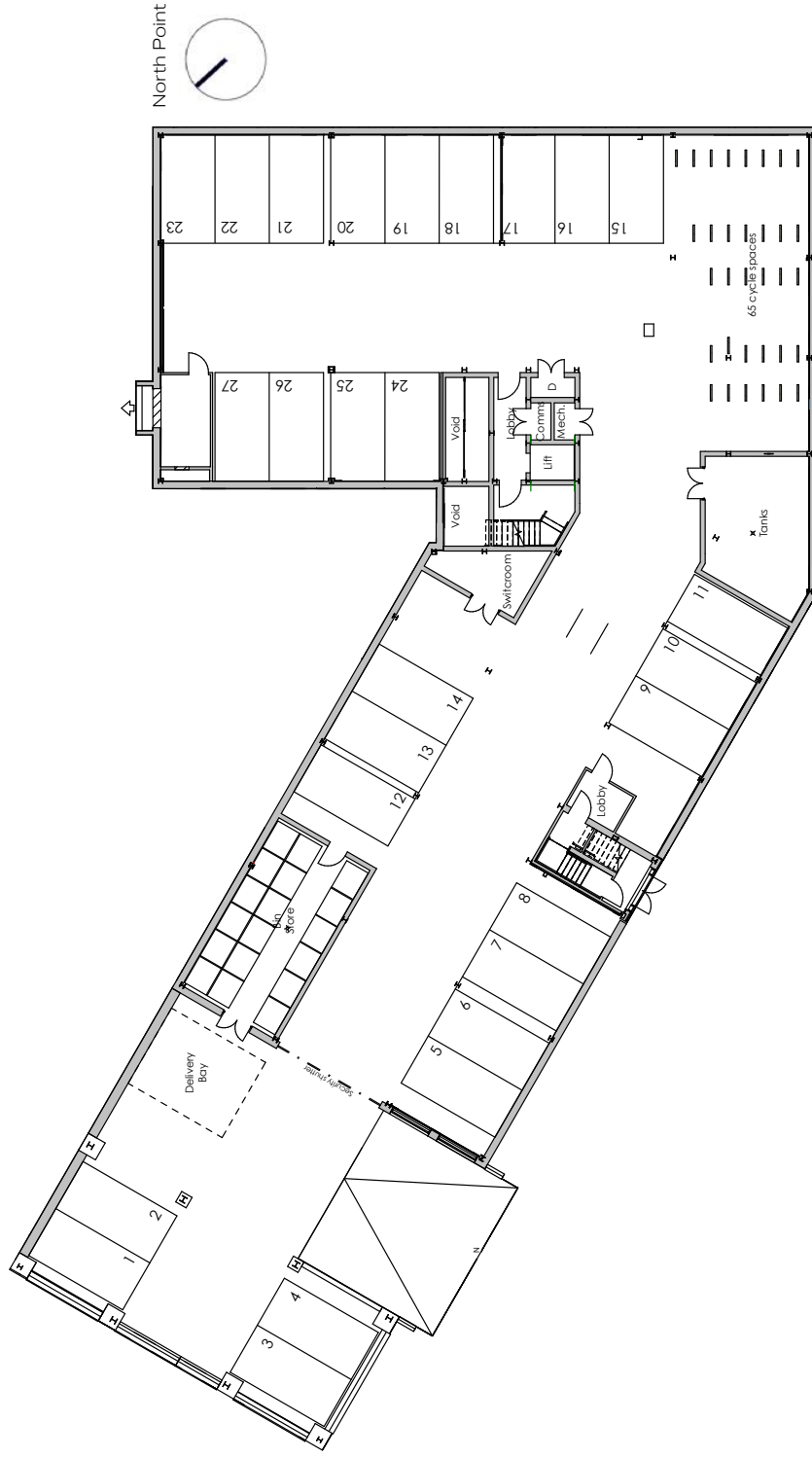


CITY & GATE

YORK

Floorplans





*** Where possible measurements have been taken from the central point of the room.
 *** The listed dimensions are indicative and are for reference only. These dimensions are indicative and are for reference only. These dimensions do not relate to the overall apartment areas, i.e. angled floor plans and internal rooms.

Basement

- 1 - Bed
- 2 - Bed
- 3 - Bed



North Point



1 - 2 bed		m	
Rooms	2.96x2.45		
Kitchen	3.26x4.09		
Living Room	2.75x4.04		
Bedroom 1	1.45x2.10		
En-suite	2.70x4.34		
Bedroom 2	2.20x1.95		
Bathroom			

2 - 2 bed		m	
Rooms	2.95x3.05		
Kitchen	3.94x4.81		
Living Room	2.7x4.85		
Bedroom 1	1.45x2.17		
En-suite	3.74x3.57		
Bedroom 2	2.78x2.16		
Bathroom			

3 - 2 bed		m	
Rooms	4.55x3.05		
Kitchen	3.90x4.82		
Living Room	2.75x4.65		
Bedroom 1	1.45x2.17		
En-suite	2.55x4.97		
Bedroom 2	2.13x2.05		
Bathroom			

4 - 1 bed		m	
Rooms	2.79x3.05		
Kitchen	3.63x4.07		
Living Room	2.75x4.97		
Bedroom	2.10x2.05		
Bathroom			

5 - 1 bed		m	
Rooms	4.60x2.75		
Kitchen	3.31x4.52		
Living Room	2.80x5.02		
Bedroom	2.10x1.97		
Bathroom			

6 - 2 bed		m	
Rooms	4.61x2.35		
Kitchen	3.77x4.77		
Living Room	2.75x4.80		
Bedroom 1	1.47x2.23		
En-suite	2.84x4.97		
Bedroom 2	2.17x2.05		
Bathroom			

7 - 1 bed		m	
Rooms	3.25x3.05		
Kitchen	4.14x4.07		
Living Room	2.75x4.97		
Bedroom	2.10x2.05		
Bathroom			

8 - 1 bed		m	
Rooms	3.13x2.00		
Kitchen	4.68x5.12		
Living Room	2.75x4.97		
Bedroom	2.10x2.05		
Bathroom			

9 - 1 bed		m	
Rooms	2.45x3.89		
Kitchen	4.68x5.12		
Living Room	4.57x3.82		
Bedroom	2.45x1.97		
Bathroom			

10 - 1 bed		m	
Rooms	2.45x4.16		
Kitchen	5.43x3.25		
Living Room	3.51x2.75		
Bedroom	2.45x1.97		
Bathroom			

11 - 2 bed		m	
Rooms	2.60x2.58		
Kitchen	5.26x3.20		
Living Room	4.09x2.70		
Bedroom 1	2.93x1.50		
En-suite	3.66x2.87		
Bedroom 2	1.75x2.10		
Bathroom			

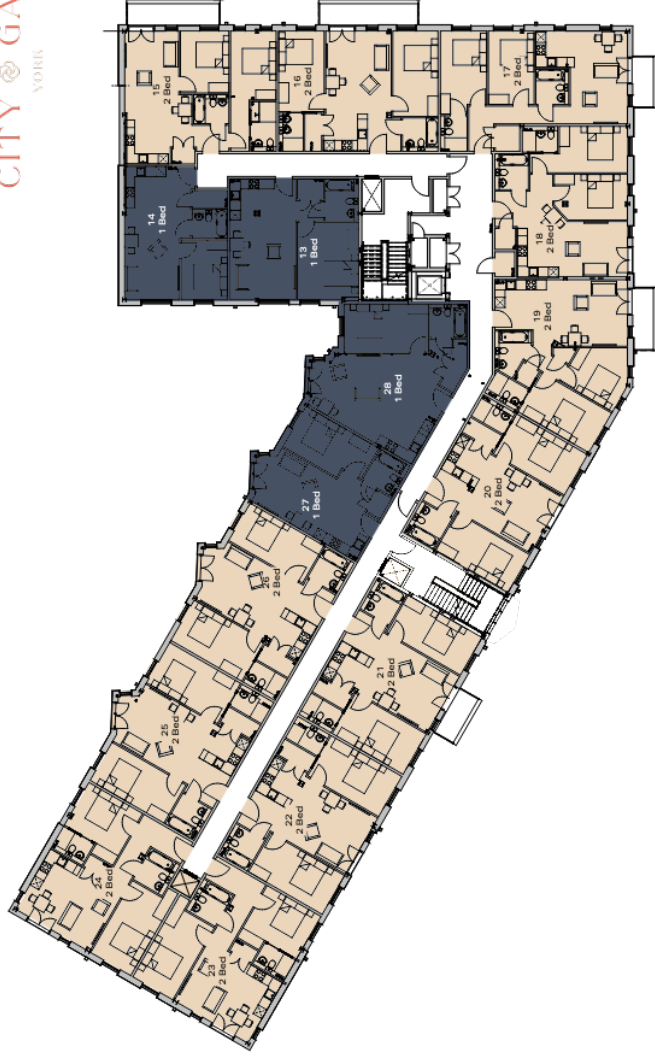
12 - 1 bed		m	
Rooms	3.05x3.05		
Kitchen	4.07x3.79		
Living Room	4.85x2.75		
Bedroom	2.17x1.97		
Bathroom			

... Where possible measurements have been taken from the central point of the room.
 ... The listed dimensions are indicative and are for reference only. These dimensions do not relate to the overall apartment areas, i.e. angled floor plans and internal rooms.

Ground Floor



North Point



13 - 1 bed		m	
Rooms	2.45x3.89		
Kitchen	4.68x3.89		
Living Room	4.57x3.62		
Bedroom	2.46x1.97		
Bathroom			

14 - 1 bed		m	
Rooms	2.45x4.16		
Kitchen	5.43x3.25		
Living Room	3.51x2.75		
Bedroom	2.46x1.97		
Bathroom			

15 - 2 bed		m	
Rooms	2.60x2.58		
Kitchen	5.28x3.20		
Living Room	4.09x2.70		
Bedroom 1	2.93x1.50		
En-suite	3.66x2.87		
Bedroom 2	1.72x2.10		
Bathroom	1.24x5.55		
Balcony			

16 - 2 bed		m	
Rooms	2.20x4.60		
Kitchen	4.92x3.88		
Living Room	4.78x1.45		
Bedroom 1	2.25x1.50		
En-suite	5.05x2.66		
Bedroom 2	1.97x2.09		
Bathroom	1.24x3.92		
Balcony			

17 - 2 bed		m	
Rooms	2.15x2.30		
Kitchen	5.50x3.39		
Living Room	4.93x2.75		
Bedroom 1	2.09x1.59		
En-suite	4.40x2.71		
Bedroom 2	2.10x1.95		
Bathroom	1.74x3.07		
Balcony			

18 - 2 bed		m	
Rooms	2.96x2.45		
Kitchen	3.26x3.09		
Living Room	2.75x3.04		
Bedroom 1	1.45x2.10		
En-suite	2.70x3.34		
Bedroom 2	2.20x1.95		
Bathroom			
Balcony			

19 - 2 bed		m	
Rooms	2.95x3.05		
Kitchen	3.94x4.81		
Living Room	2.74x4.65		
Bedroom 1	1.45x2.17		
En-suite	3.74x3.57		
Bedroom 2	2.78x2.16		
Bathroom			
Balcony	1.74x3.75		

20 - 2 bed		m	
Rooms	4.55x2.30		
Kitchen	3.90x4.62		
Living Room	2.75x4.65		
Bedroom 1	1.45x2.17		
En-suite	2.55x4.97		
Bedroom 2	2.13x2.05		
Bathroom			
Balcony			

21 - 2 bed		m	
Rooms	4.50x2.20		
Kitchen	3.85x4.92		
Living Room	2.75x4.85		
Bedroom 1	1.45x2.17		
En-suite	2.57x5.04		
Bedroom 2	2.11x1.98		
Bathroom			
Balcony	1.74x3.07		

22 - 2 bed		m	
Rooms	4.60x2.20		
Kitchen	3.84x4.82		
Living Room	2.75x4.85		
Bedroom 1	1.45x2.17		
En-suite	2.85x4.85		
Bedroom 2	2.10x1.98		
Bathroom			
Balcony			

23 - 2 bed		m	
Rooms	2.45x2.15		
Kitchen	4.12x5.04		
Living Room	2.89x3.67		
Bedroom 1	1.45x2.10		
En-suite	4.93x2.73		
Bedroom 2	2.10x1.97		
Bathroom			

24 - 2 bed		m	
Rooms	2.45x2.15		
Kitchen	4.12x5.04		
Living Room	2.89x3.67		
Bedroom 1	1.45x2.10		
En-suite	4.93x2.73		
Bedroom 2	2.10x1.97		
Bathroom			

25 - 2 bed		m	
Rooms	4.60x2.20		
Kitchen	4.92x3.89		
Living Room	2.74x5.05		
Bedroom 1	2.17x1.45		
En-suite	2.60x5.05		
Bedroom 2	2.10x1.97		
Bathroom			

26 - 2 bed		m	
Rooms	4.60x2.20		
Kitchen	4.92x3.89		
Living Room	2.74x5.05		
Bedroom 1	2.17x1.45		
En-suite	2.60x5.05		
Bedroom 2	2.10x1.97		
Bathroom			

27 - 1 bed		m	
Rooms	2.79x2.30		
Kitchen	3.64x4.22		
Living Room	2.74x4.97		
Bedroom	2.10x2.05		
Bathroom			

28 - 1 bed		m	
Rooms	4.81x2.44		
Kitchen	4.78x4.67		
Living Room	2.84x4.99		
Bedroom	1.97x2.17		
Bathroom			

*** Where possible measurements have been taken from the central point of the room.
 *** The listed dimensions are indicative and are for reference only. These dimensions are indicative and are for reference only. These dimensions do not relate to the overall apartment areas, i.e. angled floor plans and internal rooms.

First Floor





North Point



29 - 1 bed	
Rooms	m
Kitchen	2.45x3.89
Living Room	4.68x3.89
Bedroom	4.57x3.62
Bathroom	2.46x1.97

30 - 1 bed	
Rooms	m
Kitchen	2.45x4.16
Living Room	5.43x3.25
Bedroom	3.51x2.75
Bathroom	2.46x1.97

31 - 2 bed	
Rooms	m
Kitchen	2.60x2.58
Living Room	5.28x3.20
Bedroom 1	4.09x2.70
En-suite	2.93x1.50
Bedroom 2	3.66x2.87
Bathroom	1.72x2.10

32 - 2 bed	
Rooms	m
Kitchen	2.20x4.60
Living Room	4.92x3.88
Bedroom 1	4.78x1.45
En-suite	2.25x1.50
Bedroom 2	5.05x2.66
Bathroom	1.97x2.09

33 - 2 bed	
Rooms	m
Kitchen	2.15x2.30
Living Room	5.50x3.39
Bedroom 1	4.93x2.75
En-suite	2.05x1.59
Bedroom 2	4.40x2.71
Bathroom	2.10x1.95
Balcony	1.74x3.07

34 - 2 bed	
Rooms	m
Kitchen	2.95x2.45
Living Room	3.26x3.09
Bedroom 1	2.75x3.04
En-suite	1.45x2.10
Bedroom 2	2.70x3.34
Bathroom	2.20x1.95

35 - 2 bed	
Rooms	m
Kitchen	2.95x3.05
Living Room	3.94x4.81
Bedroom 1	2.74x4.85
En-suite	1.45x2.17
Bedroom 2	3.74x3.57
Bathroom	2.78x2.16

36 - 2 bed	
Rooms	m
Kitchen	4.55x2.30
Living Room	3.90x4.82
Bedroom 1	2.75x4.65
En-suite	1.45x2.17
Bedroom 2	2.85x4.97
Bathroom	2.13x2.05
Balcony	1.74x3.07

37 - 2 bed	
Rooms	m
Kitchen	4.50x2.20
Living Room	3.85x4.92
Bedroom 1	2.75x4.85
En-suite	1.45x2.17
Bedroom 2	2.57x5.04
Bathroom	2.11x1.98

38 - 2 bed	
Rooms	m
Kitchen	4.80x2.20
Living Room	3.84x4.82
Bedroom 1	2.75x4.85
En-suite	1.45x2.17
Bedroom 2	2.85x4.85
Bathroom	2.10x1.98
Balcony	1.74x3.07

39 - 2 bed	
Rooms	m
Kitchen	2.45x2.15
Living Room	4.12x5.04
Bedroom 1	2.89x3.67
En-suite	1.45x2.10
Bedroom 2	4.93x2.73
Bathroom	2.10x1.98

40 - 2 bed	
Rooms	m
Kitchen	2.45x2.15
Living Room	4.12x5.04
Bedroom 1	2.89x3.67
En-suite	1.45x2.10
Bedroom 2	4.93x2.73
Bathroom	2.10x1.98

41 - 2 bed	
Rooms	m
Kitchen	4.60x2.20
Living Room	4.92x3.89
Bedroom 1	2.74x5.05
En-suite	2.17x1.45
Bedroom 2	2.60x5.05
Bathroom	2.10x1.97

42 - 2 bed	
Rooms	m
Kitchen	4.60x2.20
Living Room	4.92x3.89
Bedroom 1	2.74x5.05
En-suite	2.17x1.45
Bedroom 2	2.60x5.05
Bathroom	2.10x1.97

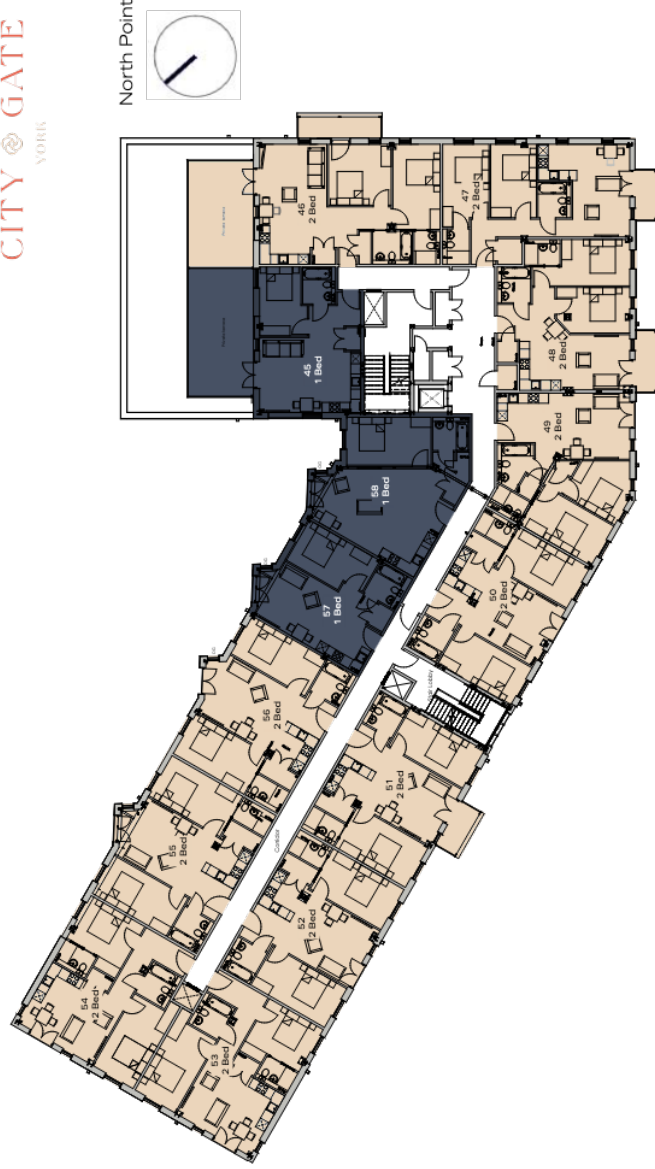
43 - 1 bed	
Rooms	m
Kitchen	2.79x2.30
Living Room	3.64x4.22
Bedroom	2.74x4.97
Bathroom	2.10x2.05

44 - 1 bed	
Rooms	m
Kitchen	4.81x2.44
Living Room	4.78x4.67
Bedroom	2.84x4.99
Bathroom	1.97x2.17

... Where possible measurements have been taken from the central point of the room.
 ... The listed dimensions are indicative and are for reference only. These dimensions are indicative and are for reference only. These dimensions do not relate to the overall apartment areas, i.e. angled floor plans and internal rooms.

Second Floor





North Point



45 - 1 bed	
Rooms	m
Kitchen	3.60x2.29
Living Room	4.44x3.70
Bedroom	4.09x2.45
Bathroom	2.20x1.96
Terrace	7.67x3.90

46 - 2 bed	
Rooms	m
Kitchen	2.30x3.00
Living Room	4.82x3.98
Bedroom 1	5.05x2.80
En-suite	1.97x1.55
Bedroom 2	3.61x3.72
Bathroom	1.97x2.35
Terrace	6.38x3.90
Balcony	1.25x3.05

47 - 2 bed	
Rooms	m
Kitchen	2.15x2.30
Living Room	5.50x3.39
Bedroom 1	4.93x2.75
En-suite	2.93x1.50
Bedroom 2	4.35x2.71
Bathroom	2.10x1.95
Balcony	1.25x3.07

48 - 2 bed	
Rooms	m
Kitchen	2.96x2.45
Living Room	3.26x4.09
Bedroom 1	2.75x4.04
En-suite	1.45x2.10
Bedroom 2	2.70x4.34
Bathroom	2.20x1.95
Balcony	1.25x3.75

49 - 2 bed	
Rooms	m
Kitchen	2.95x3.05
Living Room	3.94x4.81
Bedroom 1	2.7x4.85
En-suite	1.45x2.17
Bedroom 2	3.74x3.57
Bathroom	2.78x2.16

50 - 2 bed	
Rooms	m
Kitchen	4.55x2.30
Living Room	3.90x4.82
Bedroom 1	2.75x4.85
En-suite	1.45x2.17
Bedroom 2	2.55x4.97
Bathroom	2.13x2.05

51 - 2 bed	
Rooms	m
Kitchen	4.50x2.20
Living Room	3.85x4.92
Bedroom 1	2.75x4.85
En-suite	1.45x2.17
Bedroom 2	2.57x5.04
Bathroom	2.11x1.98
Balcony	1.25x3.07

52 - 2 bed	
Rooms	m
Kitchen	4.60x2.20
Living Room	3.84x4.92
Bedroom 1	2.75x4.85
En-suite	1.45x2.17
Bedroom 2	2.65x4.85
Bathroom	2.10x1.98

53 - 2 bed	
Rooms	m
Kitchen	2.45x2.15
Living Room	4.12x5.04
Bedroom 1	2.88x3.67
En-suite	1.45x2.10
Bedroom 2	4.93x2.73
Bathroom	2.10x1.98

54 - 2 bed	
Rooms	m
Kitchen	2.45x2.15
Living Room	4.12x5.04
Bedroom 1	2.88x3.67
En-suite	1.45x2.10
Bedroom 2	4.93x2.73
Bathroom	2.10x1.98

55 - 2 bed	
Rooms	m
Kitchen	4.60x2.20
Living Room	4.92x3.89
Bedroom 1	2.74x5.05
En-suite	2.17x1.45
Bedroom 2	2.60x5.05
Bathroom	2.10x1.97

57 - 1 bed	
Rooms	m
Kitchen	2.79x2.90
Living Room	3.64x4.22
Bedroom	2.74x4.97
Bathroom	2.10x2.05

58 - 1 bed	
Rooms	m
Kitchen	4.81x2.44
Living Room	4.78x4.67
Bedroom	2.84x4.69
Bathroom	1.97x2.17

*** Where possible measurements have been taken from the central point of the room.
 *** The listed dimensions are indicative and are for reference only. These dimensions are indicative and are for reference only. These dimensions do not relate to the overall apartment areas, i.e. angled floor plans and internal rooms.

Third Floor





North Point



59 - 2 bed	
Rooms	m
Kitchen	3.82x2.15
Living Room	6.62x3.88
Bedroom 1	3.60x3.18
En-suite	2.17x1.46
Bedroom 2	2.68x4.65
Bathroom	1.88x2.20
Terrace	12.89x2.57

60 - 2 bed	
Rooms	m
Kitchen	4.74x1.25
Living Room	6.30x2.83
Bedroom 1	3.53x3.18
En-suite	2.17x1.46
Bedroom 2	2.83x4.08
Bathroom	2.00x1.78
Terrace	13.20x2.57 +3.45x2.57

61 - 3 bed	
Rooms	m
Kitchen & Living Room	5.52x6.45
Bedroom 1	3.51x2.73
En-suite	2.22x1.29
Bedroom 2	3.50x2.74
En-suite	2.22x1.29
Bedroom 3	4.33x3.28
Bathroom	1.70x2.14
Terrace	11.65x2.57

62 - 3 bed	
Rooms	m
Kitchen	1.90x2.80
Living Room	6.78x4.10
Bedroom 1	3.25x4.10
En-suite	1.45x2.16
Bedroom 2	2.63x4.02
En-suite	2.20x1.95
Bedroom 3	4.00x2.30
Bathroom	1.95x1.50

*** Where possible measurements have been taken from the central point of the room.
 *** The listed dimensions are indicative and are for reference only. These dimensions are indicative and are for reference only. These dimensions do not relate to the overall apartment areas. i.e. angled floor plans and internal rooms.

Fourth Floor





citygateyork.co.uk
+44 (0)161 6750 267

"Alliance Investments Ltd" give notice that:

1. They are not authorised to make or give any representations or warranties in relation to the property on their own or otherwise. They assume no responsibility for any statement that may be made in these particulars. These particulars do not form part of any offer or contract and must not be relied upon as statement or representations of fact.
2. Any areas, measurements or distances are approximate. Figures provided for living costs (for example, service charges) are estimates only and may be subject to change. The test, images, and plans are for guidance only and are not necessarily comprehensive. It should not be assumed that the property has all necessary planning, building regulations or other consents and Alliance Investments Ltd have not tested any services, equipment or facilities. Purchasers must satisfy themselves by inspection or otherwise.
3. These particulars were prepared from preliminary plans and specifications before the completion of the properties. These particulars, together with any images and/or figures that they contain, are intended only as a guide. Properties may have been changed during construction and final finishes could vary. Prospective purchasers should not rely on this information but must get their solicitor to check the plans, specification and property information provided during the sales process. Any product names referenced are indicative of the quality and may be subject to change in the final specification. The developer retains the right to amend the final specification of properties.