

GBIC

Glove Box Integrated Coaters



ADVANCED
Technologies



The glove box integrated coaters (GBIC) are designed for easy integration of vacuum coaters with glove boxes from most major manufacturers. This allows for handling, transferring and coating samples under controlled atmospheres for end-to-end processing. The chambers have options of either a side-opening front door, or vertically-opening front door that allows for access from the glove box, and a hinged rear/side door that allows access for service without compromising the glove box atmosphere.

The HHV GBICs also come with the option of integrated mask changing mechanism that allows for complete device fabrication without breaking vacuum. These GBICs find extensive application in the area of organic electronics, solar cells, batteries, lighting, and other emerging applications.

CHAMBER CONFIGURATIONS



Overall system view placed inside clean room



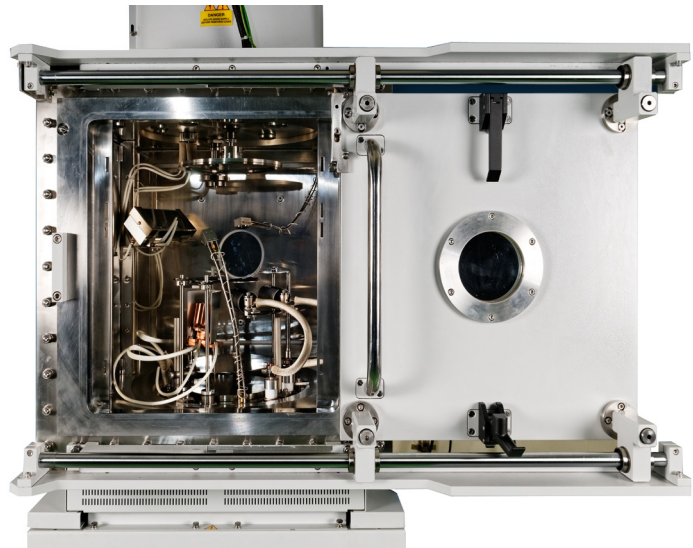
View from side showing coater service door



In-situ mask changing mechanism



Stand alone coater for integration with existing glove box



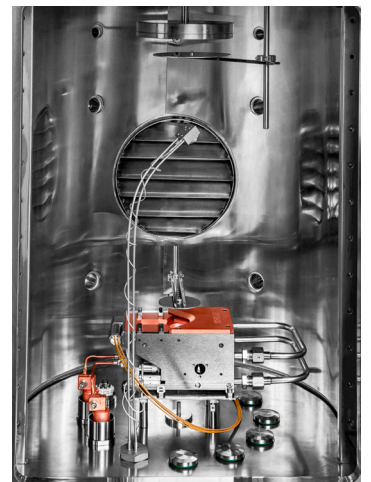
Horizontal sliding door configuration



Thermal and organic sources



Magnetron sputtering



Electron beam evaporation

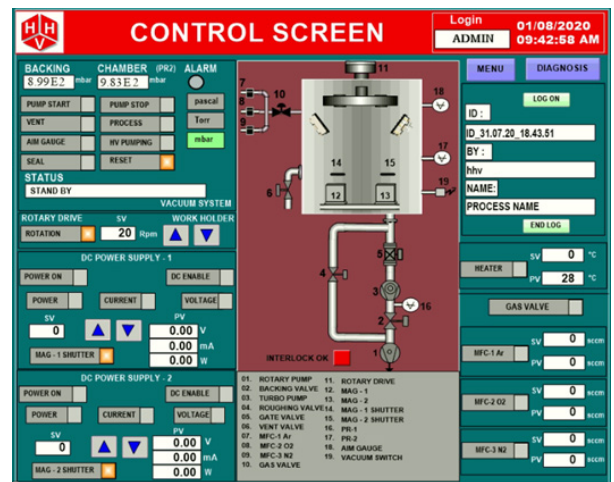
SPECIFICATIONS

CHAMBER SIZE	Chamber diameter of 500 mm or 600 mm and customizable height
HV PUMPING OPTIONS	Turbo and Cryo pumps of suitable capacity
ROUGHING/BACKING OPTIONS	Rotary/Dry
BASE PRESSURE	Up to 10^{-7} mbar
SUBSTRATE SIZE	Substrate holder plate of maximum 400 mm working diameter
SUBSTRATE HOLDER	Rotary, Watercooled, Heated, Z shift, and Custom Designs for In-situ Mask Change-over

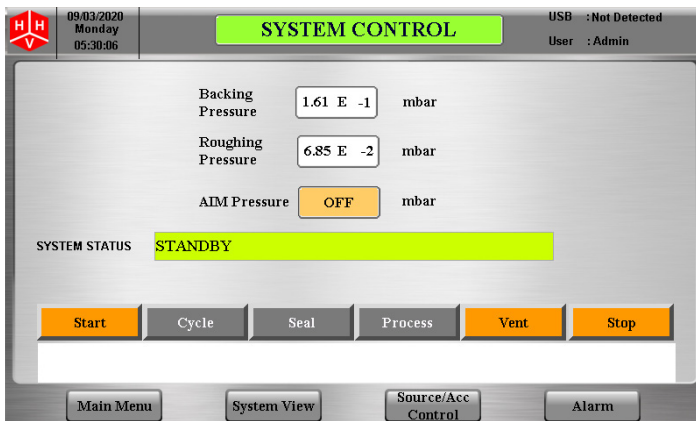
CONTROL OPTIONS



Easy access control console



SCADA based system operation



Touch screen based operation

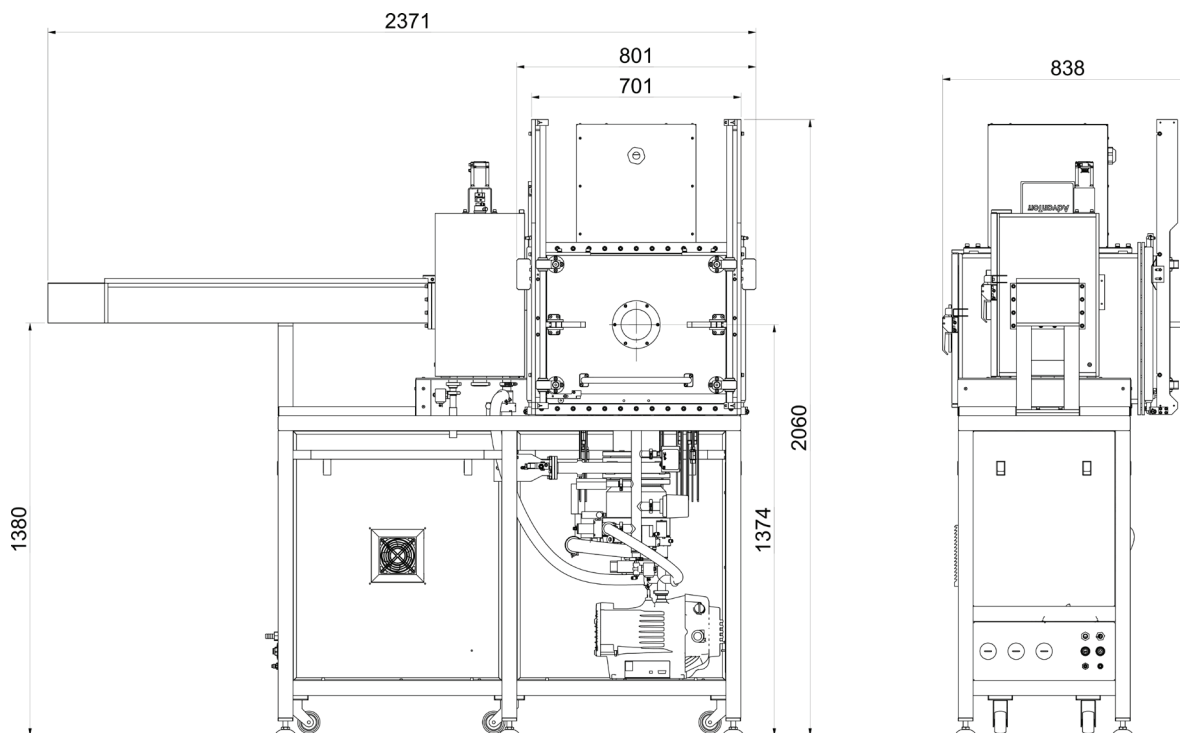
FEATURES

- Ergonomic design for easy access from glove box
- Direct access to process equipment via front sliding door
- Convenient and interlocked service access via back side hinged door
- In-situ mask change-over options
- Easy operation via full color touch-screen HMI
- Full integrated process control with recipe control software management

APPLICATIONS

- Organic electronics
- Solar cells
- Energy storage
- LEDs
- Semiconductors
- Hybrid coatings

LAYOUT



All dimensions in mm

Representative footprint. Actual dimensions will depend on system configuration

Registered Office:

Site No. 17, Phase 1, Peenya Industrial Area, Bengaluru 560058,
Karnataka, India. Phone: +91-80-41931000
Email: infotfed@hhvadvancedtech.com
Website: www.hhvadvancedtech.com

Manufacturing Unit:

Site No. 31-34 & 37, Phase1,
KIADB Industrial Area, Dabaspeta, Bengaluru Rural 562 111,
Karnataka, India, Phone: +91-80-66703700



ADVANCED
Technologies