
AUTO SERIES

Proven Workhorses for Research and Pilot Production



ADVANCED
Technologies



The HHV AT Auto 306 and Auto 500 are versatile and compact coating systems which can meet the varied demands of the researchers in the thin film and nanotechnology domains. With their range of vacuum pumping options, chambers and modular process accessories, the Auto series offers users a range of techniques to complement the modern laboratory.

CHAMBER CONFIGURATIONS



Bell jar chamber option



Cylindrical chamber option



Auto 306 Platform



Auto 500 Platform



Thermal source



Turret source with indexer



Organic source



Rotary work holder with heater



Glancing angle deposition (GLAD) work holder



Knudsen planetary work holder



Rotatilt work holder

SPECIFICATIONS

CHAMBER SIZE

Auto 306 options:
 FL400 Box chamber: 400 mm (Ø) x 500 (H)
 Bell Jar: 315 mm (Ø) x 354 (H)
 Cylindrical glass Chamber: 300 mm (Ø) x 365 (H)

Auto 500 options:
 FL400: 400 mm (Ø) x 500 (H)
 FL500: 500 mm (Ø) x 500 (H)

HV PUMPING OPTIONS

Diffusion/Turbo with built-in liquid nitrogen trap

ROUGHING/BACKING OPTIONS

Rotary / Dry

BASE PRESSURE

5×10^{-7} mbar

SUBSTRATE SIZE

Upto 260 mm (Ø) standard. Custom design for sizes up to 300 mm x 300 mm

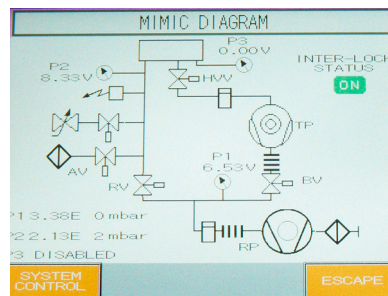
SUBSTRATE HOLDER

Rotary, Planetary, Knudsen planetary, Domed, Heating, Biasing, Z shift, and other custom options

CONTROL OPTIONS



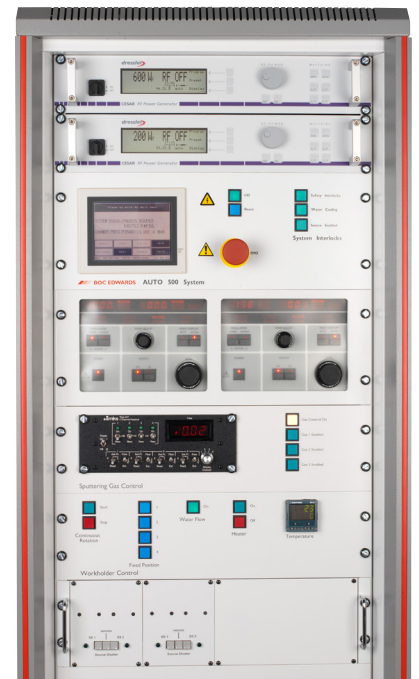
Manual control



Auto vacuum cycle



Quartz crystal monitor based control



Auto vacuum cycle and manual process control

RESULTS

Uniformity of +/- 5 % as standard. Custom designed configurations to get better than +/- 3 %

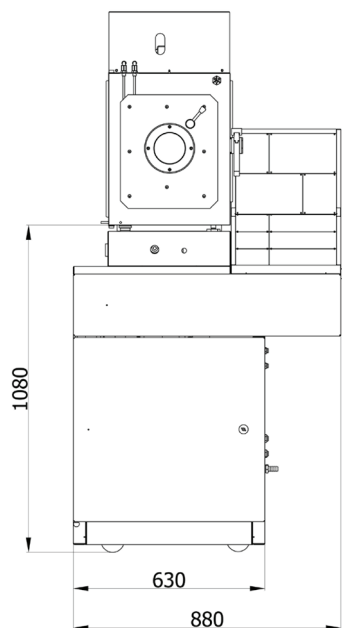
FEATURES

- Proven design with over 500 + installations worldwide
- Range of vacuum chambers and work holders to suit applications
- Integrated film thickness monitoring and vacuum control option
- Intelligent high vacuum valve
- No pneumatics, all electronic components
- CE marked

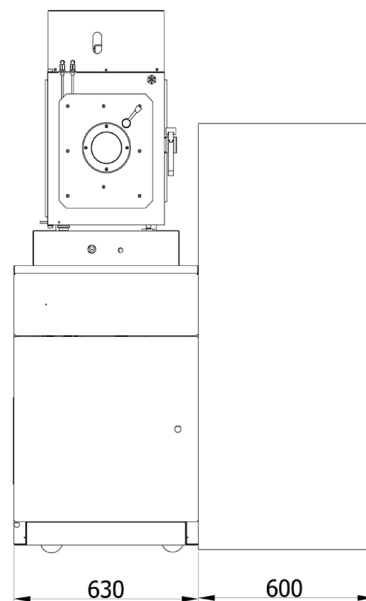
APPLICATIONS

- Semiconductors
- Optical coatings
- Metal coatings
- Organic Electronics
- Hard coatings
- SEM and TEM sample preparation

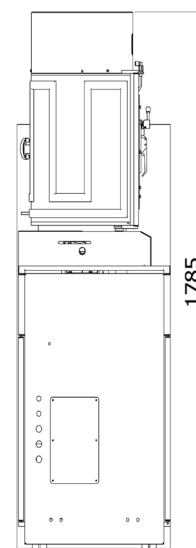
LAYOUT



Auto 306



Auto 500



Depth profile for both

All dimensions in mm
Representative footprints. Actual dimensions will depend on system configuration.



ADVANCED
Technologies

Registered Office:

Site No. 17, Phase 1, Peenya Industrial Area, Bengaluru 560058,
Karnataka, India. Phone: +91-80-41931000
Email: infotfed@hhvadvancedtech.com
Website: www.hhvadvancedtech.com

Manufacturing Unit:

Site No. 31-34 & 37, Phase1,
KIADB Industrial Area, Dabaspeta, Bengaluru Rural 562 111,
Karnataka, India, Phone: +91-80-66703700