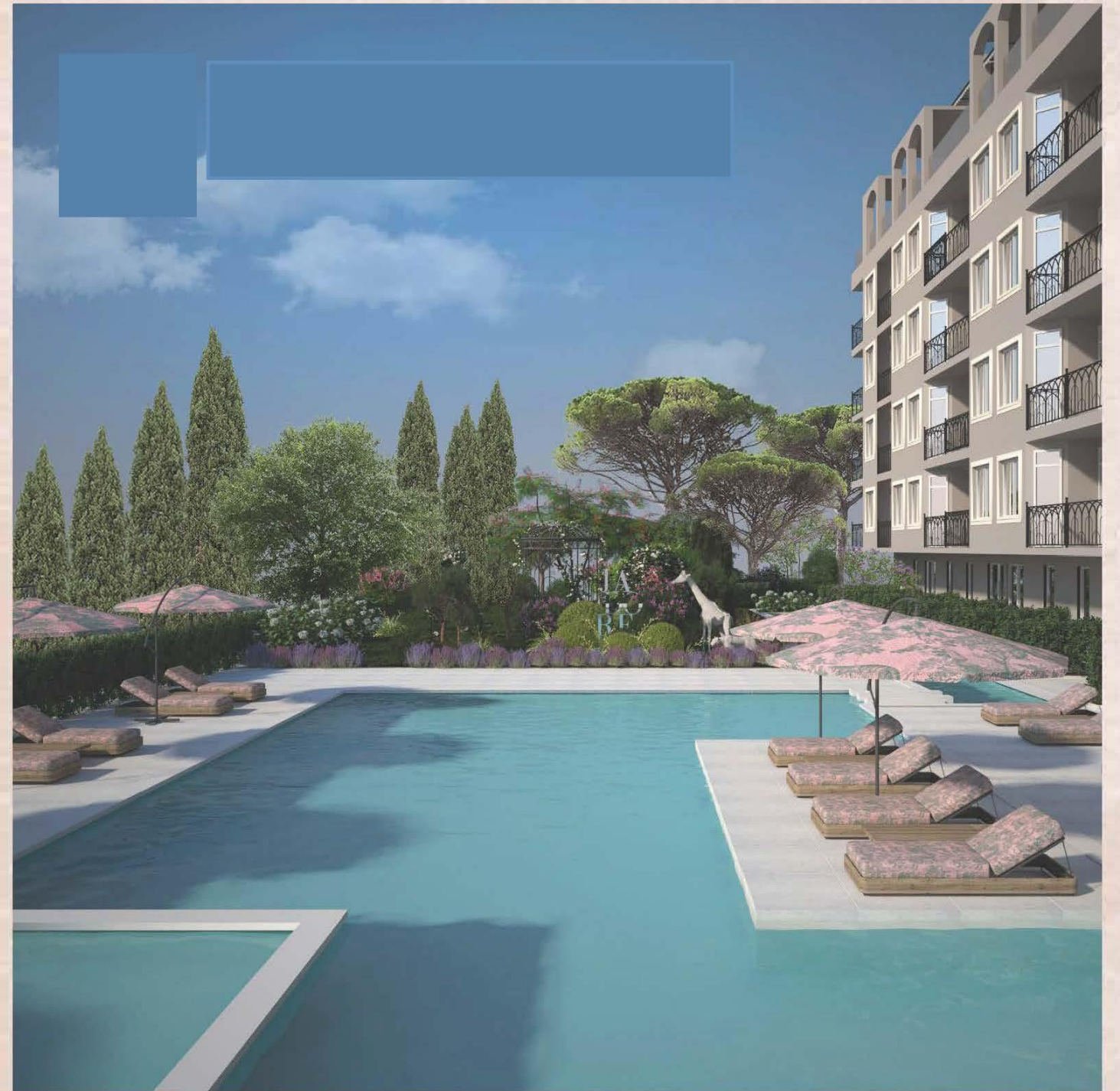


## New complex Saint Vlas

An inspiration with a touch of French opulence, moderate luxury, refinement and taste... a reference to the French Riviera... a creation with a lot of love!











Located in the western part of the Solnechen Bryag resort complex, only 250 m from the beach, near the most attractive entertainment establishments "Zazu" and "Bedroom" beach, the residential complex consists of 89 studio apartments, 15 one-bedroom apartments and 16 two-bedroom apartments, it will be made of high-quality materials and decorated in soft pastel tones, creating a feeling of comfort and coziness. On the territory of the common areas there is a reception, a lobby-bar with a Gelatto corner for drinks and snacks, areas for meetings and rest, sanitary facilities, a small salon for exercise machines, a massage studio, a sauna and an office room. A water mirror with limited direct access for the owners of parts of the independent facilities on the ground floor, a designer pool with a "floating island" and recreation areas, a playground for the youngest residents, as well as separate parking spaces with limited access for the owners of the building, will make Our complex is not only a good opportunity for investment, but also a desirable place to relax.

The investor made a bet on rich landscaping, majestic gardens with deciduous trees, hydrangeas, roses, a rotunda with exquisite wisteria and many other floral solutions that make you hold your breath and surrender to the magic of adoration....





Objects are rented in degrees of completion "turnkey" with flooring and fully equipped bathrooms.

For the convenience of customers, we have prepared three types of furniture for an additional fee.

Our clients will be provided with the possibility of rental management, as well as additional services such as cleaning before and after the stay, as well as renovation after the season.

Style 1

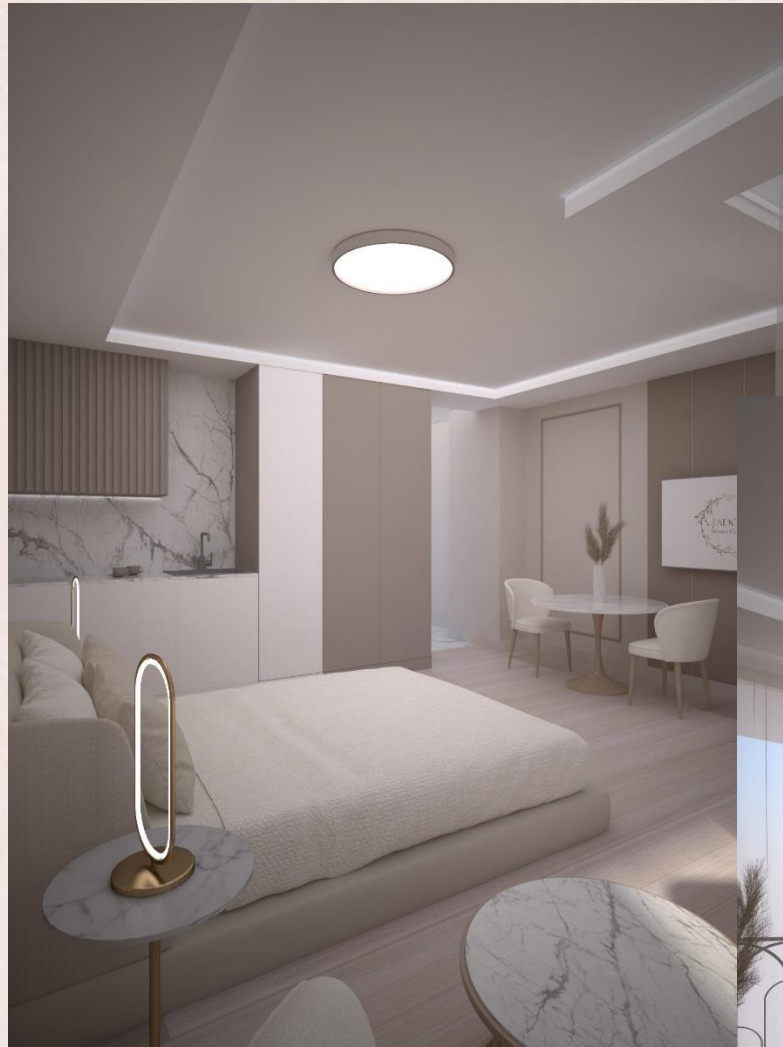
- Kitchen corner with sink and faucet
- Wardrobe
- Bed 160/200 m
- A mattress
- Dining chair
- Two chairs
- An armchair
- Coffee table
- Blinds
- Lighting tools
- TV
- Air conditioner
- Decoration





- Style 2
- Kitchen corner according to individual design with sink and faucet, refrigerator, built-in wardrobe.
- Bed 160/200 m
- A mattress
- Two side tables
- Two armchairs
- Coffee table
- Dining chair
- Two chairs
- Blinds
- Lighting tools
- TV
- Air conditioner
- Decoration





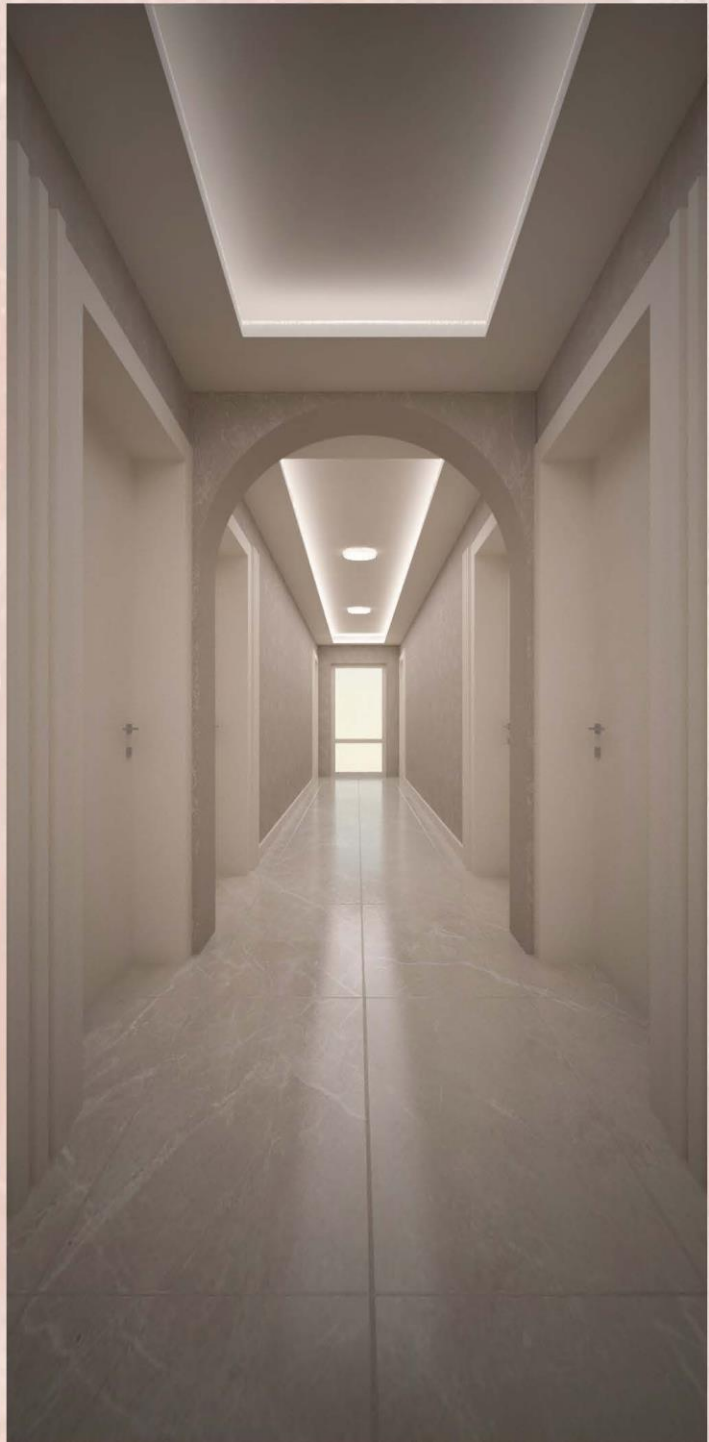
### Style 3

- Kitchen corner according to the individual design with sink and faucet, stove, hood, refrigerator, built-in wardrobe.
- Bed 160/200 m
- A mattress
- Two side tables
- Two armchairs
- Coffee table
- Dining chair
- Two chairs
- Blinds
- Lighting tools
- TV
- Air conditioner
- Decoration

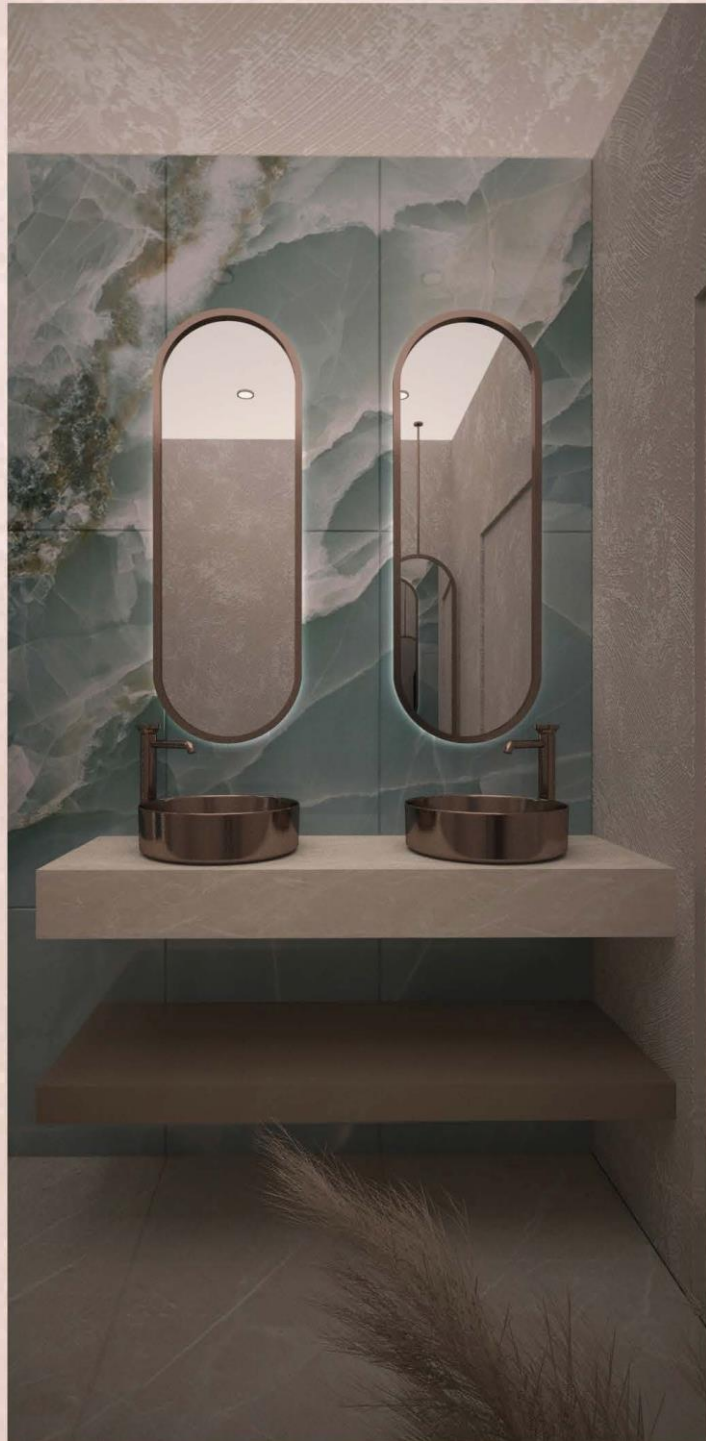






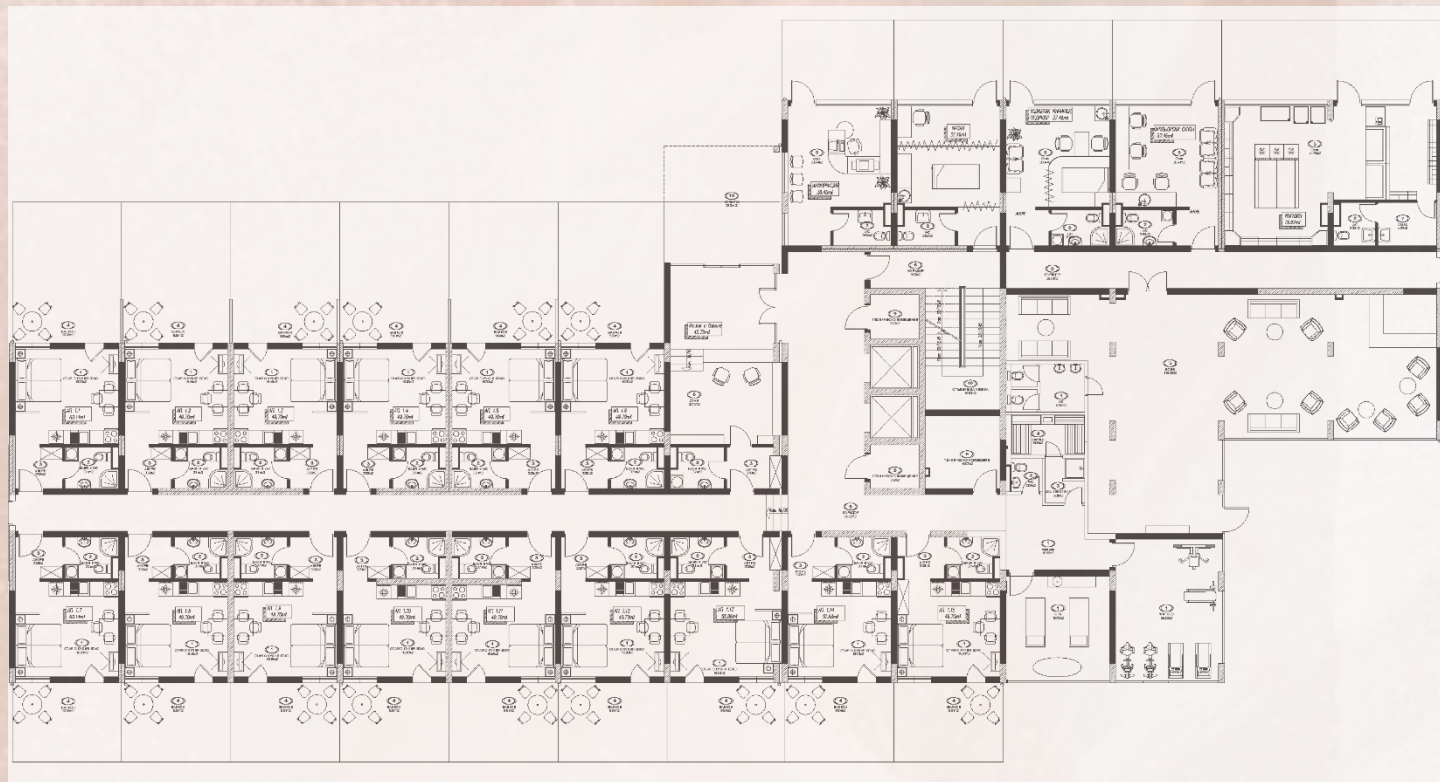






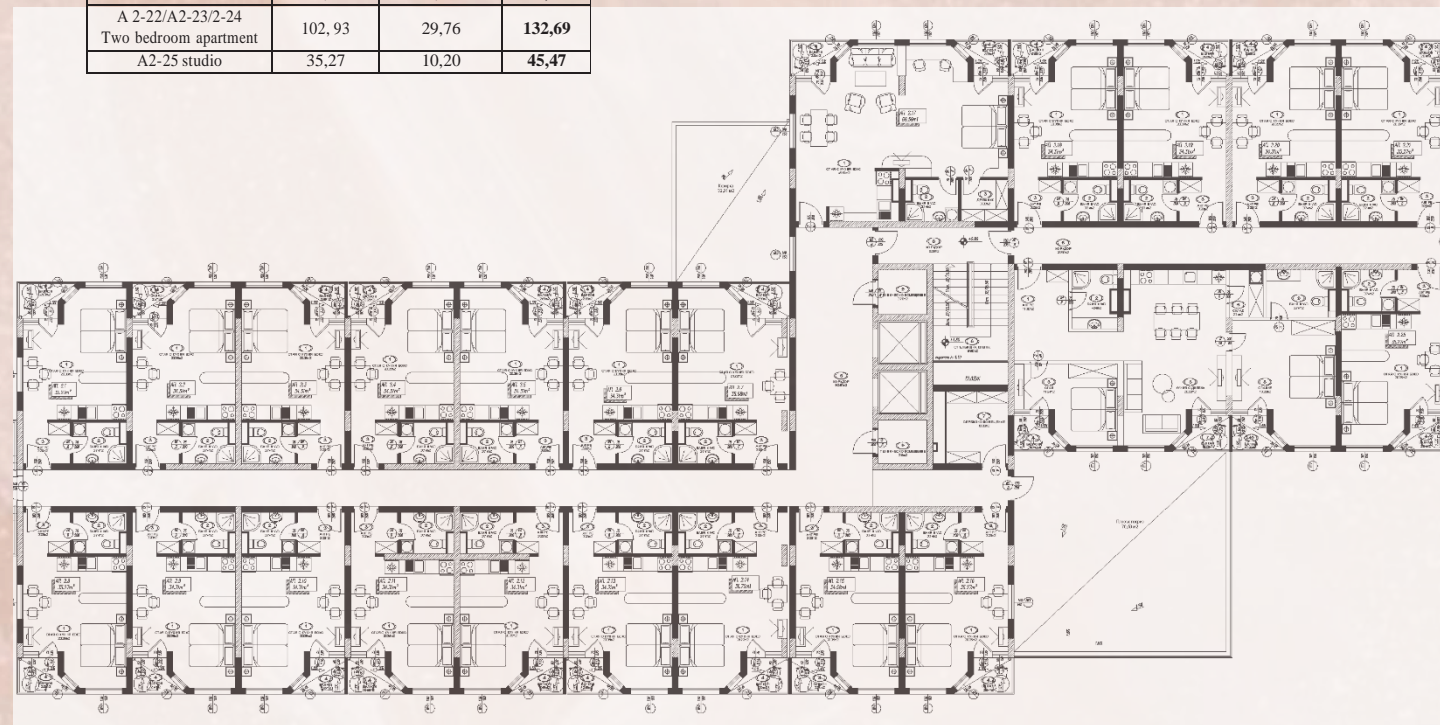


First/parter floor	Built up area	Common parts	Total area
A1-1 studio	60,14	14,94	<b>75,08</b>
A1-2 studio	49,70	12,35	<b>62,05</b>
A1-3 studio	49,70	12,09	<b>61,79</b>
A1-4 studio	49,70	12,09	<b>61,79</b>
A1-5 studio	49,70	12,09	<b>61,79</b>
A1-6 studio	49,70	12,09	<b>61,79</b>
A1-7 studio	60,14	15,85	<b>75,99</b>
A1-8 studio	49,70	13,10	<b>62,80</b>
A1-9 studio	49,70	13,10	<b>62,80</b>
A1-10 studio	49,70	13,10	<b>62,80</b>
A1-11 studio	49,70	13,10	<b>62,80</b>
A1-12 studio	49,70	13,10	<b>62,80</b>
A1-13 studio	55,86	14,72	<b>70,58</b>
A1-14 studio	51,68	13,36	<b>65,04</b>
A1-15 studio	49,70	12,85	<b>62,55</b>



Layout on the 1st floor /ground floor/

Second floor	Built up area	Common parts	Total area
A2-1 studio	35,27	9,80	<b>45,07</b>
A2-2 studio	34,31	9,54	<b>43,85</b>
A2-3 studio	34,31	9,34	<b>43,65</b>
A2-4 studio	34,31	9,34	<b>43,65</b>
A2-5 studio	34,31	9,34	<b>43,65</b>
A2-6 studio	34,31	9,34	<b>43,65</b>
A2-7 studio	36,98	10,07	<b>47,05</b>
A2-8 studio	35,27	10,41	<b>45,68</b>
A2-9 studio	34,31	10,12	<b>44,43</b>
A2-10 studio	34,31	10,12	<b>44,43</b>
A2-11 studio	34,31	10,12	<b>44,43</b>
A2-12 studio	34,31	10,12	<b>44,43</b>
A2-13 studio	34,31	10,12	<b>44,43</b>
A2-14 studio	36,72	10,83	<b>47,55</b>
A2-15 studio	34,58	10,20	<b>44,78</b>
A2-16 studio	35,27	10,41	<b>45,68</b>
A2-17 One bedroom apartment	69,58	18,95	<b>88,53</b>
A2-18 studio	34,31	9,16	<b>43,47</b>
A2-19 studio	34,31	9,16	<b>43,47</b>
A2-20 studio	34,31	9,16	<b>43,47</b>
A2-21 studio	35,27	9,41	<b>44,68</b>
A 2-22/A2-23/2-24 Two bedroom apartment	102, 93	29,76	<b>132,69</b>
A2-25 studio	35,27	10,20	<b>45,47</b>



2nd floor layout

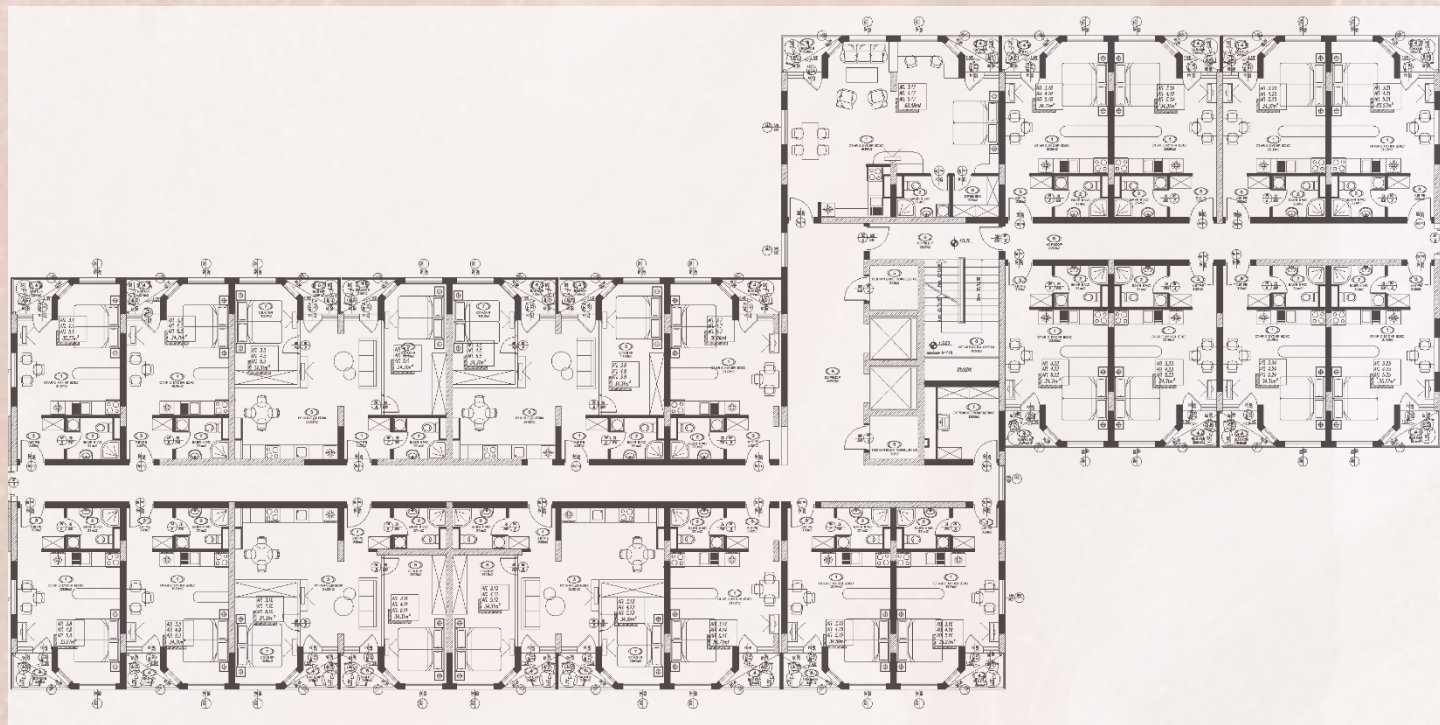


Third floor	Built up area	Common parts	Total area
A3-1 studio	35,27	9,80	<b>45,07</b>
A3-2 studio	34,31	9,54	<b>43,85</b>
A3-3/3-4 Two bedroom apartment	68,62	18, 68	<b>87, 30</b>
A3-5/3-6 Two bedroom apartment	68,62	18, 68	<b>87, 30</b>
A3-7 studio	36,99	10,07	<b>47,06</b>
A3-8 studio	35,27	10,41	<b>45,68</b>
A3-9 studio	34,31	10,12	<b>44,43</b>
A3-10/3-11 Two bedroom apartment	68,62	20,24	<b>88,86</b>
A3-12/3-13 Two bedroom apartment	68,62	20,24	<b>88,86</b>
A3-14 studio	36,72	10,83	<b>47,55</b>
A3-15 studio	34,58	10,20	<b>44,78</b>
A3-16 studio	35,27	10,41	<b>45,68</b>
A3-17 One bedroom apartment	69,58	18,95	<b>88,53</b>
A3-18 studio	34,31	9,34	<b>43,65</b>
A3-19 studio	34,31	9,34	<b>43,65</b>
A3-20 studio	34,31	9,34	<b>43,65</b>
A3-21 studio	35,27	9,60	<b>44,87</b>
A3-22 studio	34,31	10,12	<b>44,43</b>
A3-23 studio	34,31	10,12	<b>44,43</b>
A3-24 studio	34,31	10,12	<b>44,43</b>
A3-25 studio	35,27	10,41	<b>45,68</b>

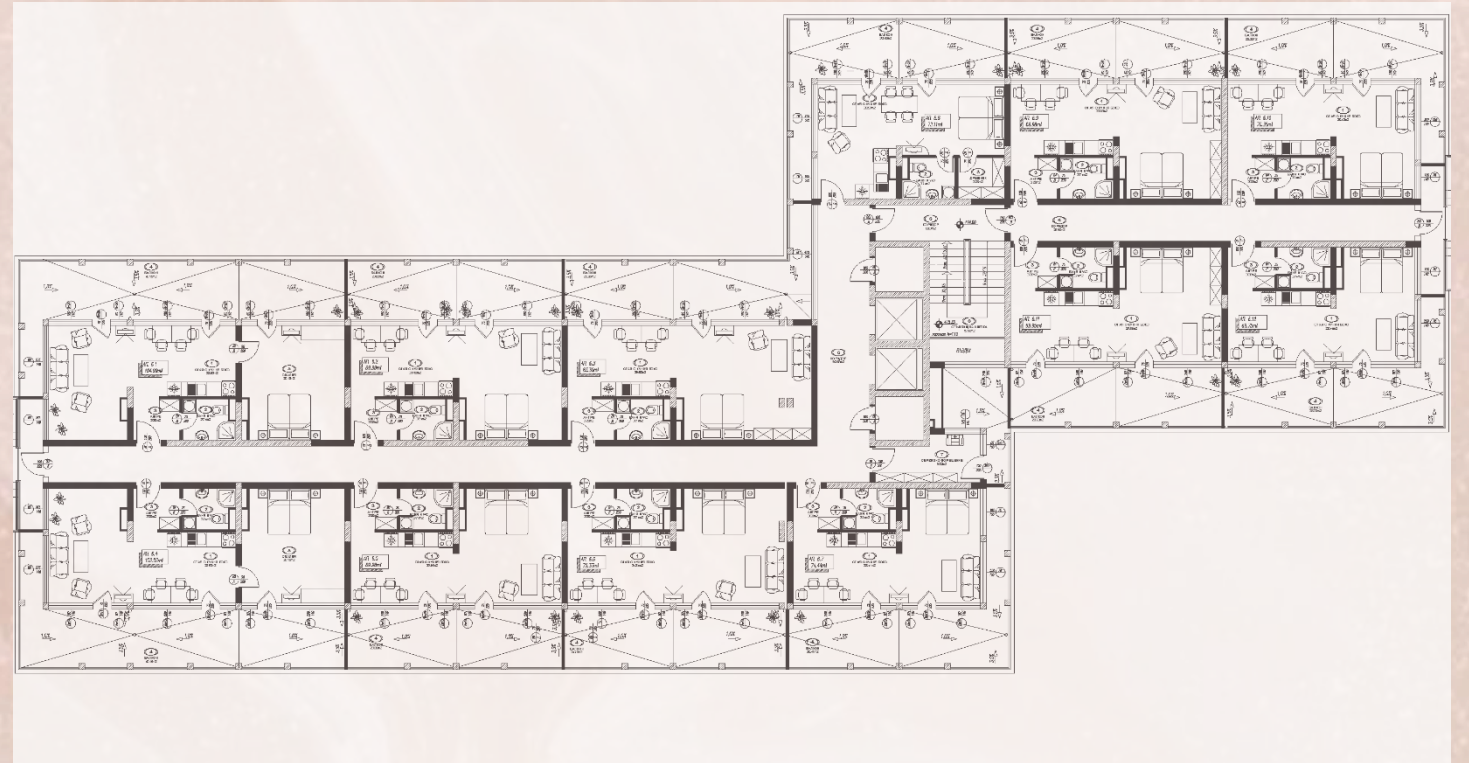
Fourth floor	Built up area	Common parts	Total area
A4-1 studio	35,27	9,80	<b>45,07</b>
A4-2 studio	34,31	9,54	<b>43,85</b>
A4-3/4-4 Two bedroom apartment	68,62	18, 68	<b>87, 30</b>
A4-5/4-6 Two bedroom apartment	68,62	18, 68	<b>87, 30</b>
A4-7 studio	36,99	10,07	<b>47,06</b>
A4-8 studio	35,27	10,41	<b>45,68</b>
A4-9 studio	34,31	10,12	<b>44,43</b>
A4-10/4-11 Two bedroom apartment	68,62	20,24	<b>88,86</b>
A4-12/4-13 Two bedroom apartment	68,62	20,24	<b>88,86</b>
A4-14 studio	36,72	10,83	<b>47,55</b>
A4-15 studio	34,58	10,20	<b>44,78</b>
A4-16 студио	35,27	10,41	<b>45,68</b>
A4-17 One bedroom apartment	69,58	18,95	<b>88,53</b>
A4-18 studio	34,31	9,34	<b>43,65</b>
A4-19 studio	34,31	9,34	<b>43,65</b>
A4-20 studio	34,31	9,34	<b>43,65</b>
A4-21 studio	35,27	9,60	<b>44,87</b>
A4-22 studio	34,31	10,12	<b>44,43</b>
A4-23 studio	34,31	10,12	<b>44,43</b>
A4-24 studio	34,31	10,12	<b>44,43</b>
A4-25 studio	35,27	10,41	<b>45,68</b>

Fifth floor	Built up area	Common parts	Total area
A5-1 studio	35,27	9,80	<b>45,07</b>
A5-2 studio	34,31	9,54	<b>43,85</b>
A5-3/5-4 Two bedroom apartment	68,62	18, 68	<b>87, 30</b>
A5-5/5-6 Two bedroom apartment	68,62	18, 68	<b>87,30</b>
A5-7 studio	36,99	10,07	<b>47,06</b>
A5-8 studio	35,27	10,41	<b>45,68</b>
A5-9 studio	34,31	10,12	<b>44,43</b>
A5-10/5-11 Two bedroom apartment	68,62	20,24	<b>88,86</b>
A5-12/5-13 Two bedroom apartment	68,62	20,24	<b>88,86</b>
A5-14 studio	36,72	10,83	<b>47,55</b>
A5-15 studio	34,58	10,20	<b>44,78</b>
A5-16 studio	35,27	10,41	<b>45,68</b>
A5-17 One bedroom apartment	69,58	18,95	<b>88,53</b>
A5-18 studio	34,31	9,34	<b>43,65</b>
A5-19 studio	34,31	9,34	<b>43,65</b>
A5-20 studio	34,31	9,34	<b>43,65</b>
A5-21 studio	35,27	9,60	<b>44,87</b>
A5-22 studio	34,31	10,12	<b>44,43</b>
A5-23 studio	34,31	10,12	<b>44,43</b>
A5-24 studio	34,31	10,12	<b>44,43</b>
A5-25 studio	35,27	10,41	<b>45,68</b>

Sixth floor	Built up area	Common parts	Total area
A6-1 Two bedroom apartment	104,99	27,20	<b>132,19</b>
A6-2 One bedroom apartment	69,98	17,76	<b>87,74</b>
A6-3 One bedroom apartment	83,30	21,14	<b>104,44</b>
A6-4 Two bedroom apartment	102,07	28,06	<b>130,13</b>
A6-5 One bedroom apartment	69,98	19,24	<b>89,22</b>
A6-6 One bedroom apartment	72,37	19,90	<b>92,27</b>
A6-7 One bedroom apartment	74,44	20,46	<b>94,90</b>
A6-8 One bedroom apartment	72,11	18,30	<b>90,41</b>
A6-9 One bedroom apartment	69,98	17,76	<b>87,74</b>
A6-10 One bedroom apartment	70,35	18,22	<b>88,57</b>
A6-11 One bedroom apartment	69,95	19,23	<b>89,18</b>
A6-12 One bedroom apartment	69,75	19,17	<b>88,92</b>



Distribution on 3rd, 4th and 5th floor



6th floor layout



Seventh floor	Built up area	Common parts	Total area
A7-1 Atelie	27,29	28,36	55,65
A7-2 Atelie	26,55	27,59	54,14
A7-3 Atelie	26,55	27,59	54,14
A7-4 Atelie	26,55	27,59	54,14
A7-5 Atelie	26,55	27,59	54,14
A7-6 Atelie	54,71	56,85	111,56
Atelie 7-7+8+9/	86,99	177,39	264,38

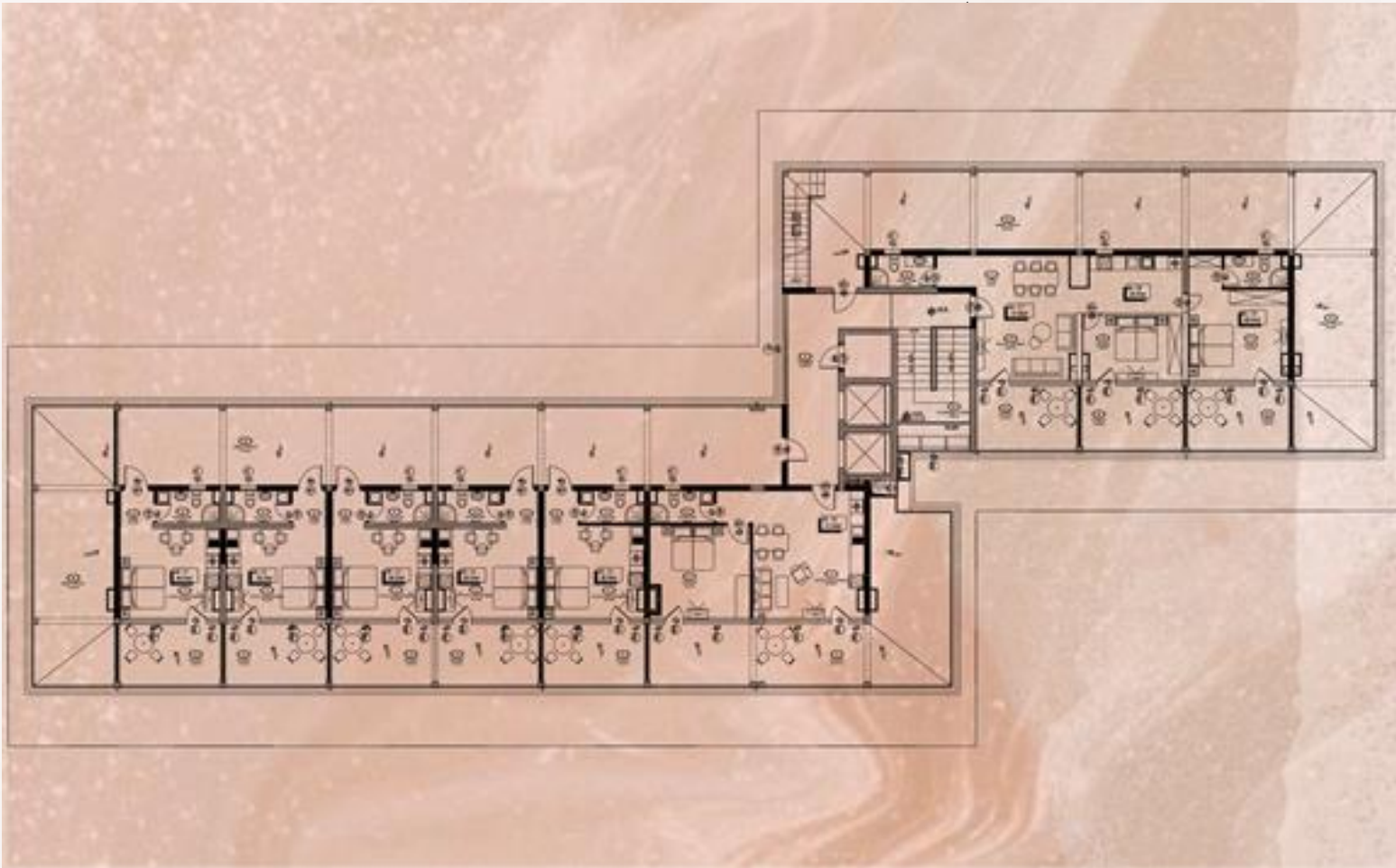
There is a possibility of installments

First payment within a month after  
deposit 50%

For half a year without %

Up to 3 years 6% per annum on balance

Up to 7 years 9% per annum on balance









Price list

Number	Floor	view from the windows	Clean territory	common parts	total area	Price per sq/m	Price
A1-1 Studio	1st floor	area	60,14	14,94	<b>75,08</b>	848	<b>63 667,84</b>
A1-3 Studio	1st floor	area	49,70	12,09	<b>61,79</b>	901	<b>55 672,79</b>
A1-4 Studio	1st floor	area	49,70	12,09	<b>61,79</b>	901	<b>55 672,79</b>
A1-5 Studio	1st floor	area	49,70	12,09	<b>61,79</b>	901	<b>55 672,79</b>
A1-6 Studio	1st floor	area	49,70	12,09	<b>61,79</b>	901	<b>55 672,79</b>
A1-7 Studio	1st floor	infinity pool/gardens	60,14	15,85	<b>75,99</b>	901	<b>68 466,99</b>
A1-13 Studio	1st floor	Pool/Gardens	55,86	14,72	<b>70,58</b>	954	<b>67 333,32</b>
A1-14 Studio	1st floor	Pool/Gardens	51,68	13,36	<b>65,04</b>	954	<b>62 048,16</b>
A1-15 Studio	1st floor	Pool/Gardens	49,70	12,85	<b>62,55</b>	954	<b>59 672,70</b>
A 2-22/A2-23/2-24 two-roomed flat	2nd floor	Pool/Gardens /Large outdoor terrace as a bonus	102, 93	29,76	132,69	1272	<b>168 781,68</b>
A4-17 two-roomed flat	4th floor	area	69,58	18,95	<b>88,53</b>	1219	<b>107 918,07</b>
A5-10/5-11 three bedroom apartment	5th floor	Pool/Gardens	68,62	20,24	<b>88,86</b>	1325	<b>117 739,50</b>
A6-1 three bedroom apartment	6th floor	courtyard/outdoor terrace	104,99	27,20	<b>132,19</b>	1060	<b>140 121,40</b>
A6-2 two-room apartment	6th floor	yard/outdoors terrace	69,98	17,76	<b>87,74</b>	1060	<b>93 004,40</b>
A6-3 two-roomed flat	6th floor	courtyard/outdoor terrace	83,30	21,14	<b>104,44</b>	1060	<b>110 706,40</b>
A6-4 three bedroom apartment	6th floor	Pool/garden/outdoor terrace	102,07	28,06	<b>130,13</b>	1113	<b>144 834,69</b>
A6-5 two-roomed flat	6th floor	Pool/garden/outdoor terrace	69,98	19,24	<b>89,22</b>	1113	<b>99 301,86</b>
A6-6 Two-roomed flat	6th floor	Pool/garden/outdoor terrace	72,37	19,90	<b>92,27</b>	1113	<b>102 696,51</b>
A6-7 Two-roomed flat	6th floor	Pool/garden/outdoor terrace	74,44	20,46	<b>94,90</b>	1113	<b>105 623,70</b>
A6-8 Two-roomed flat	6th floor	courtyard/outdoor terrace	72,11	18,30	<b>90,41</b>	1060	<b>95 834,60</b>
A6-11 Two-roomed flat	6th floor	Pool/garden/outdoor terrace	69,95	19,23	<b>89,18</b>	1113	<b>99 257,34</b>
A6-12 Two-roomed flat	6th floor	Pool/garden/outdoor terrace	69,75	19,17	<b>88,92</b>	1113	<b>98 967,96</b>
A7-1 Studio	Attic floor	Pool/garden/outdoor terrace	27,29	28,36	<b>55,65</b>	954	<b>53 090,10</b>
A7-6 Studio	Attic floor	Pool/garden/outdoor terrace	54,71	56,85	<b>111,56</b>	954	<b>106 428,24</b>





— — — — —  
CROWN  
**NOVORUD**  
INVESTMENTS & PROPERTY

+359 89-202-2011

+359 88-933-8334

+972 53-281-4559

(WhatsUp, Viber, Telegram)