



Residential complex Millennium II

Millennium II is
a new

*philosophy of
life that
combines
comfort, a
rational
approach to*

- The complex consists of two buildings
- One bedroom apartments with area from 60 sq.m to 90 sq.m
- Two-bedroom apartments ranging from 96 sq.m to 120 sq.m
- View from the windows to the garden, pool or sea.

detail and Millennium II is a new ultra-modern environmentally friendly resort town of Sveti Vlas. In a quiet and peaceful *paesthetics* area, just 140 meters from the golden sandy beach. However, to find yourself in a noisy atmosphere of fun in the city center, a walk will take no more than five minutes.



Our goal is yours

calm and quality

holiday in Saint Vlas, and you

enjoy the sea and mountain

air, cleanliness, beautiful

Bulgarian nature and comfort

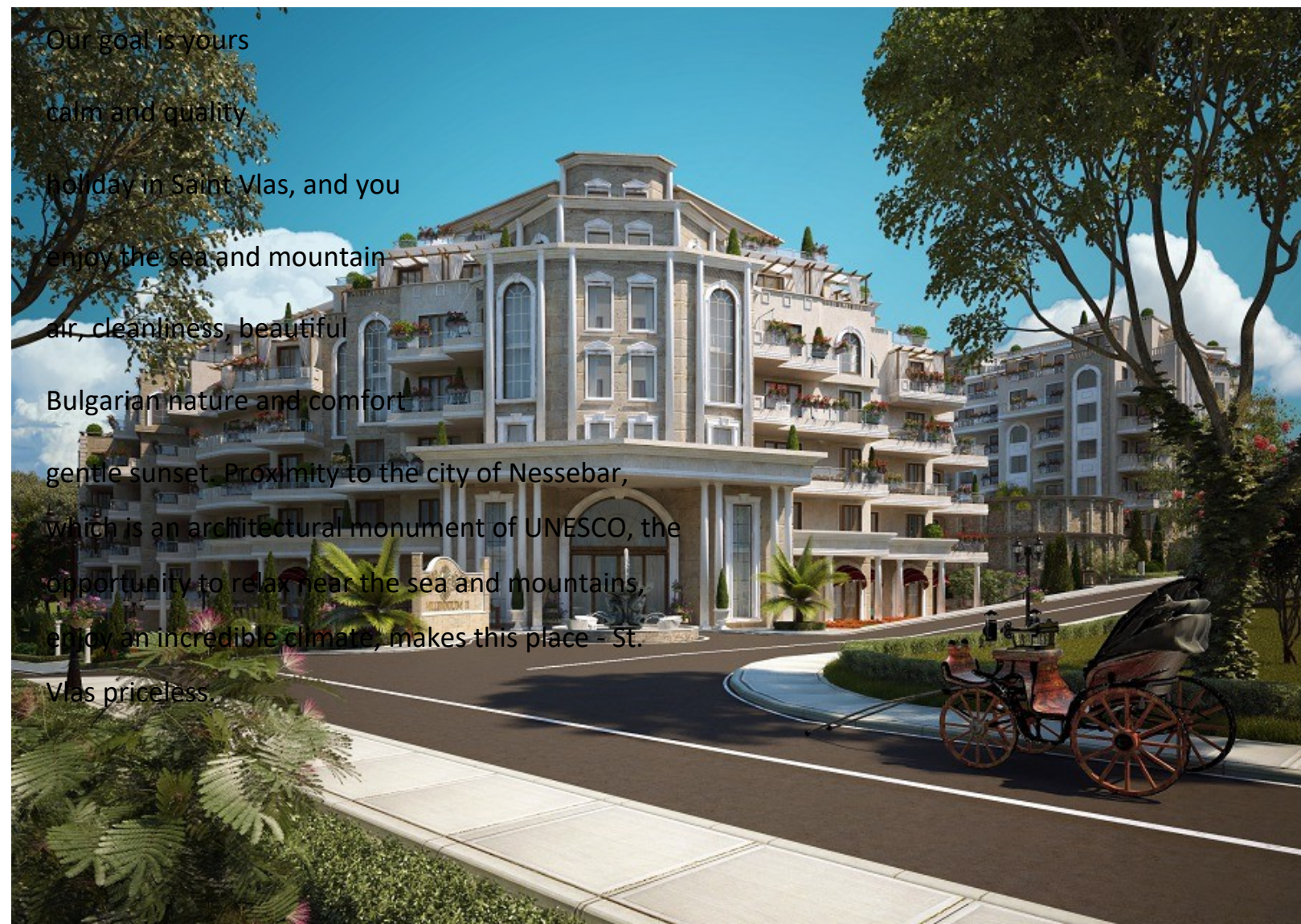
gentle sunset. Proximity to the city of Nessebar,

which is an architectural monument of UNESCO, the

opportunity to relax near the sea and mountains,

enjoy an incredible climate, makes this place - St.

Vlas priceless.



The building was built at a great distance from neighboring houses, which creates a feeling of relaxing privacy and unlimited space, and will also allow you to admire sunrises and sunsets from the windows of your living room.



The architecture of the complex meets all international energy efficiency requirements. The complex was built according to an individual project using the most modern technologies and the highest quality materials. There are no long inter-apartment corridors and therefore you have only a few neighbors on the landing.

The facades of the building will be lined with the highest quality natural materials, including natural stone and marble.

Millennium 2 was built according to an individual project using the most modern technologies and the highest quality materials. For comfort and maximum safety, all exits are equipped with panoramic, high-quality and reliable elevators.

Many apartments in Millenium 2 with large terraces and beautiful sea views are equipped with light and graceful pergolas that create a romantic atmosphere. Most apartments allow you to admire not only a fantastic view of the sea, but also a mountain landscape.



Residents have at their disposal a beautiful park area, outdoor swimming pools, sunbathing and relaxation areas, an indoor swimming pool, a small pool for children, a fireplace lounge, a reception, a bar, a restaurant with gourmet cuisine, a cafe, a spa center, a fitness center, a children's playground, 24-hour security and maintenance, and much more.

For residents with small children or pets, there is the opportunity to choose apartments with a green area under the window and their own separate exit.



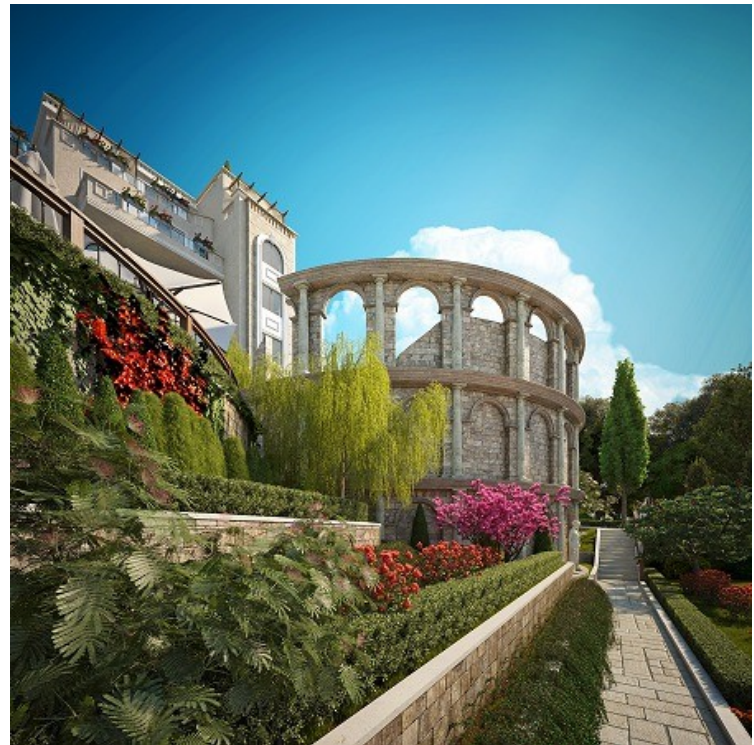
A modern restaurant and SPA complex, swimming pools, playgrounds, a fireplace lounge and a conference room - everything is done for the convenience and comfort of Millenium 2 residents and their guests.

It is no coincidence that St. Vlas was nicknamed the “pearl of the coast.” The meeting of mountain and sea air currents provides a healing climate all year round.



Fresh seafood, colorful local cuisine, excellent Bulgarian wines, vegetables and fruits - always at your table! There is an excellent selection of restaurants, shops and markets nearby. The locals are very friendly and almost all speak excellent Russian.

Millennium 2 offers apartments of various layouts and sizes for sale: one-room and two-room apartments, including those with their own garden plots. The apartments are sold ready-made, fully finished on a turnkey basis in a classic design. Bathrooms are fully equipped with sanitary ware and accessories.



PROFITABLE INVESTMENT

In addition to purchasing your own apartment in a fashionable Black Sea resort, eliminating the need to search for and book hotel rooms at the height of the holiday season, the property owner has the opportunity to earn income from his investment by renting out the apartment. And do not forget that since 2007 Bulgaria has been a member of the European Union.





Below are the floor plans of the Millennium 2 complex

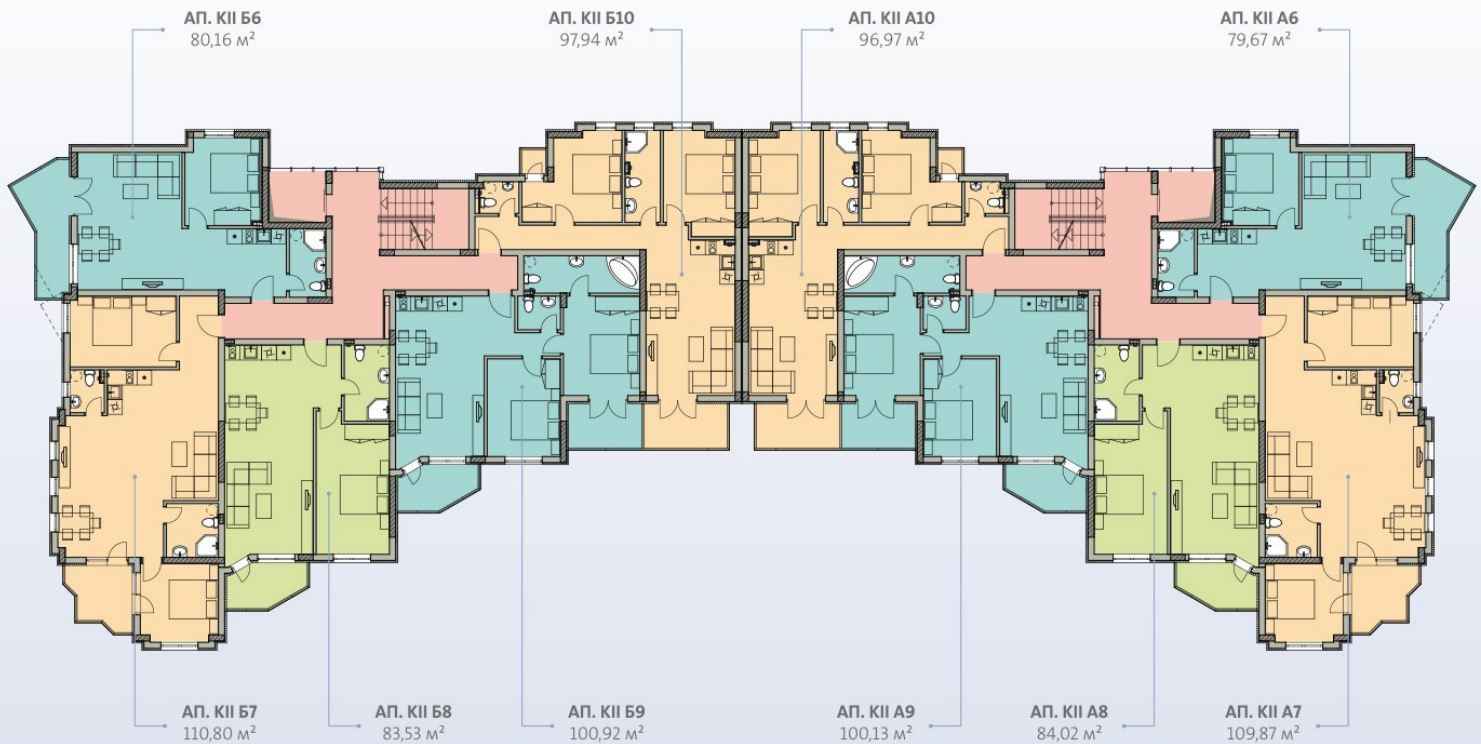


Апартаменты с двумя спальнями — отличный выбор для семей с детьми и тех, кто любит отдыхать с друзьями

КОРПУС · 2

:: ЭТАЖ

2



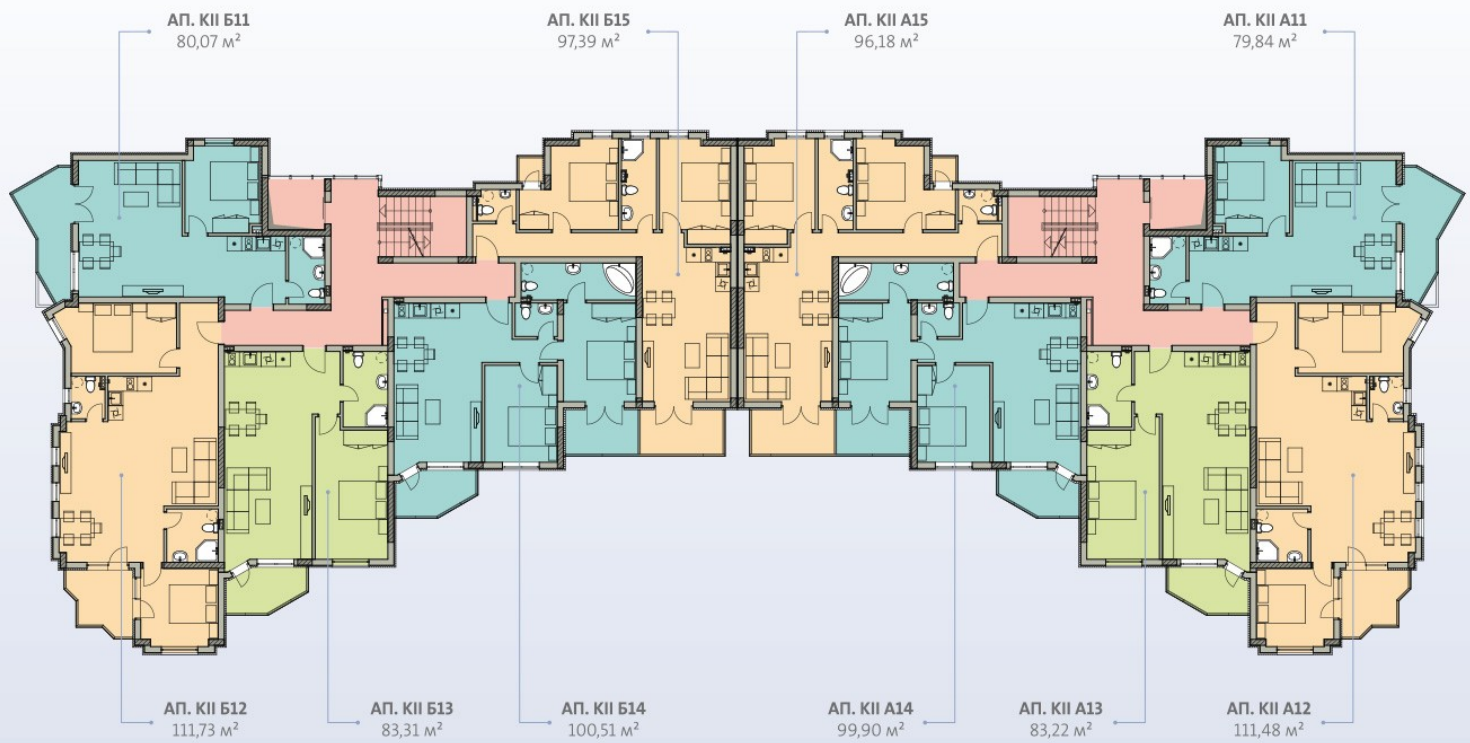


Благодаря продуманному расположению уже с третьего этажа открываются изумительные виды на море или горы, все зависит от ваших предпочтений

КОРПУС · 2

:: ЭТАЖ

3



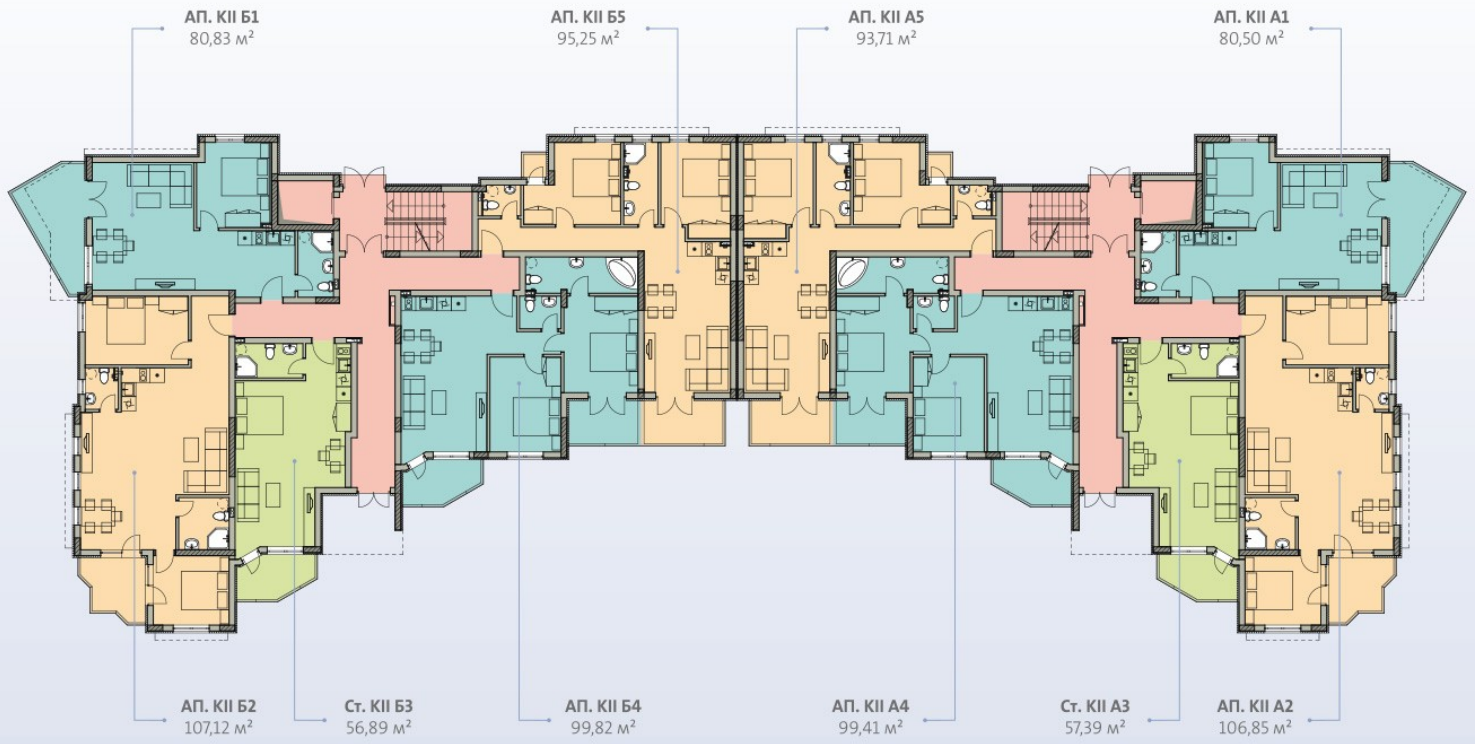


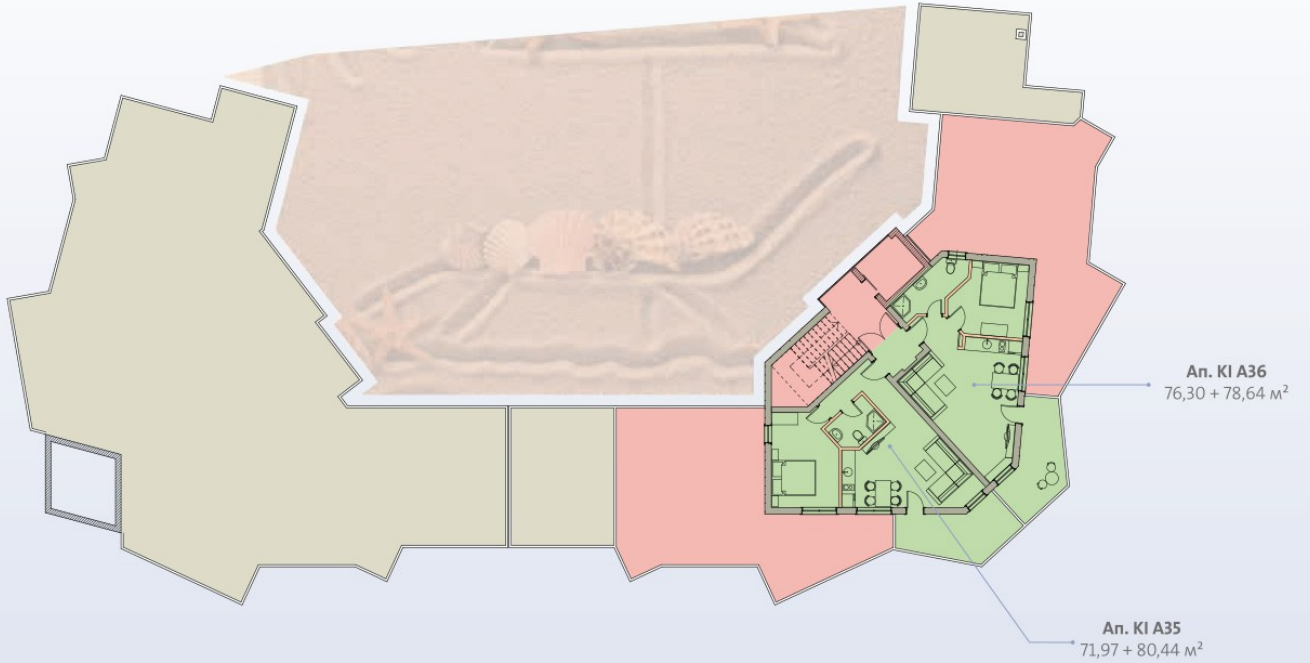
Покупатели апартаментов второго корпуса имеют большое разнообразие выбора.
Хотите собственный выход к бассейну или английский дворик? Пожалуйста!

КОРПУС · 2

:: ЭТАЖ

1







На шестом этаже располагаются апартаменты площадью до 150 квадратных метров — для самых взыскательных владельцев

КОРПУС · 1 :: ЭТАЖ

6

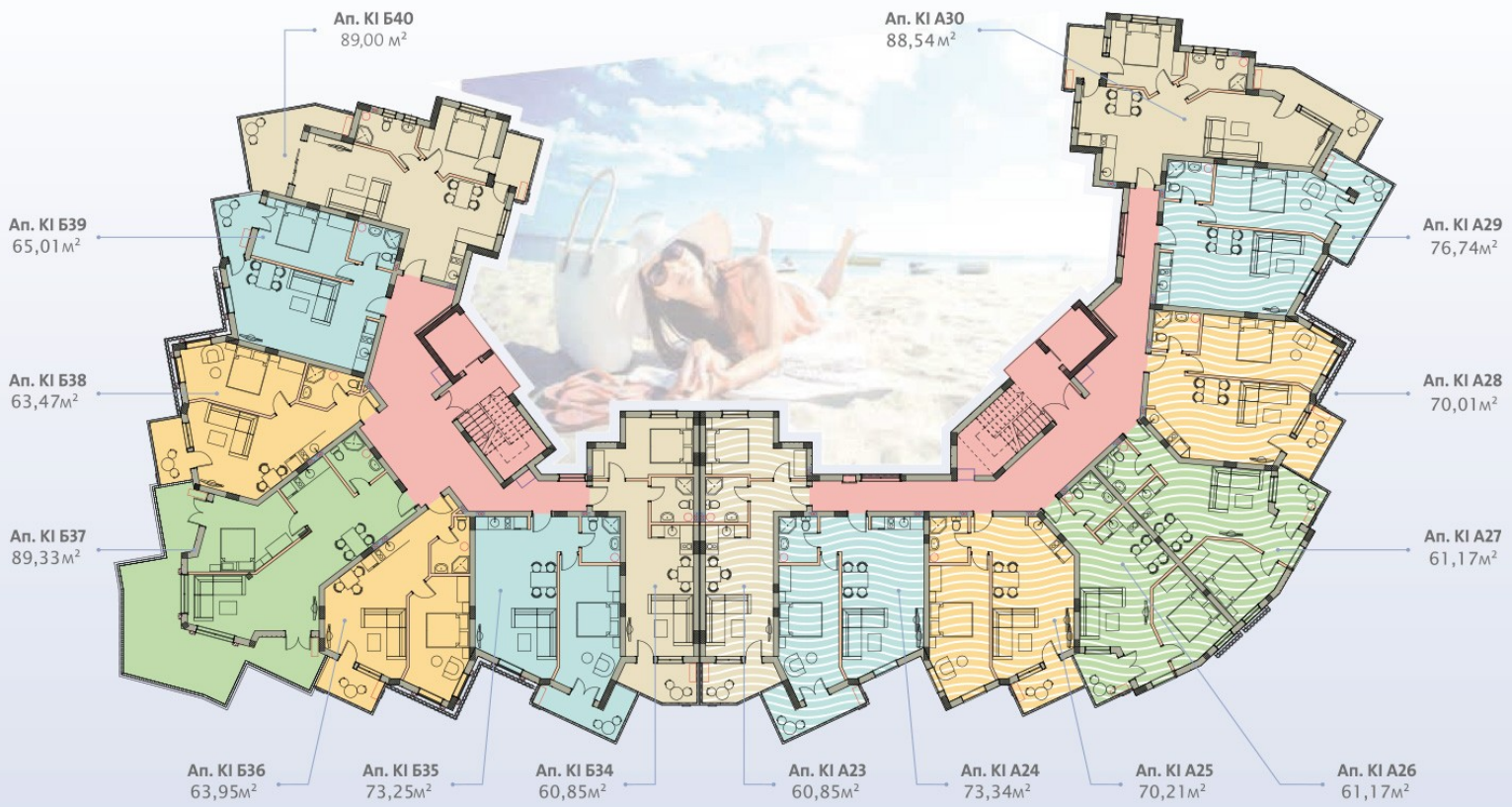




Все апартаменты располагают уютными и просторными террасами, откуда можно наслаждаться свежим бризом и удивительным морским пейзажем

КОРПУС · 1 :: ЭТАЖ

5

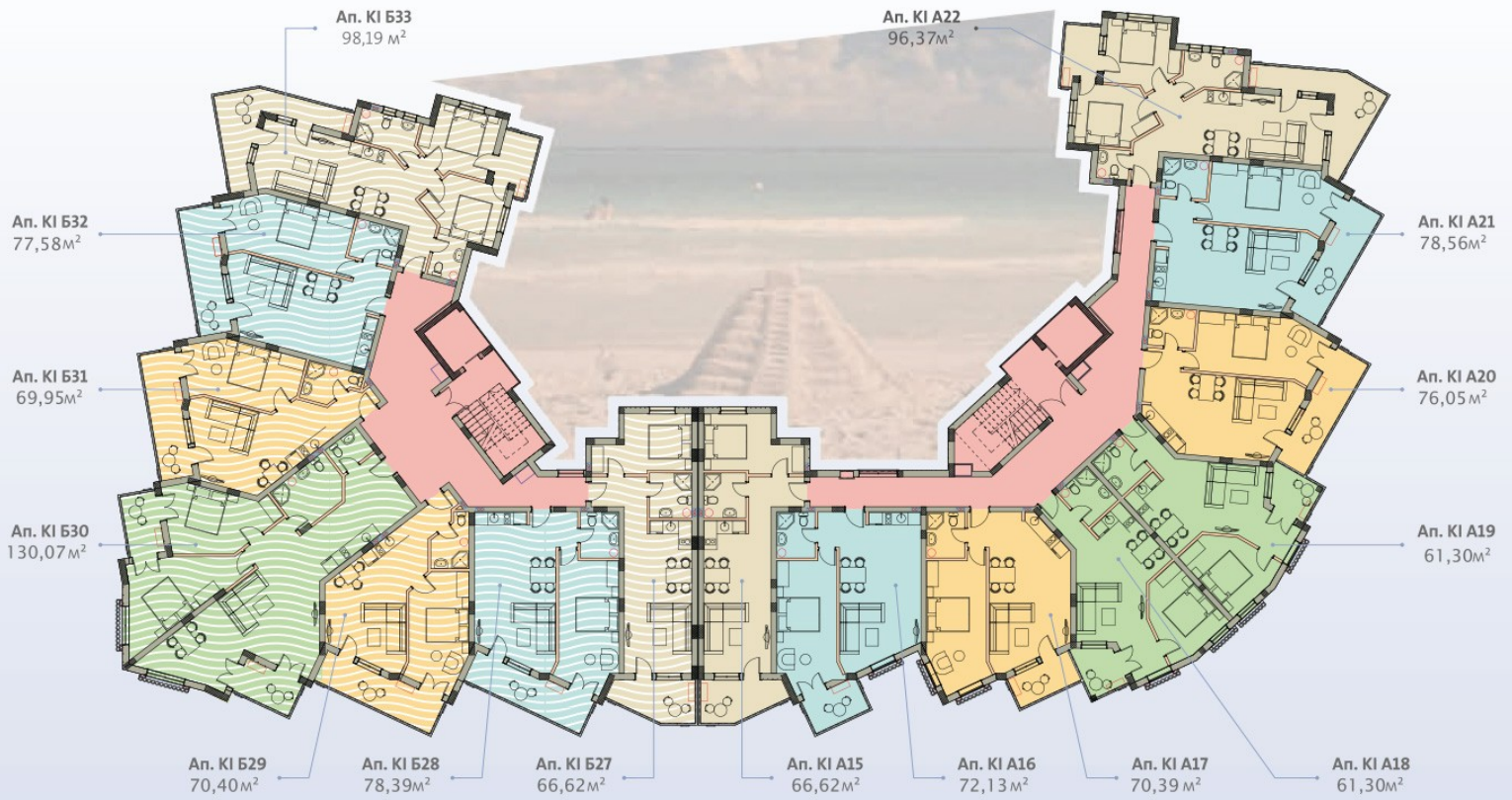




Большое разнообразие планировок призвано удовлетворить запросы каждого покупателя. К примеру, на четвертом этаже вы можете выбрать апартаменты площадью от 60 до 130 квадратных метров

КОРПУС · 1 :: ЭТАЖ

4

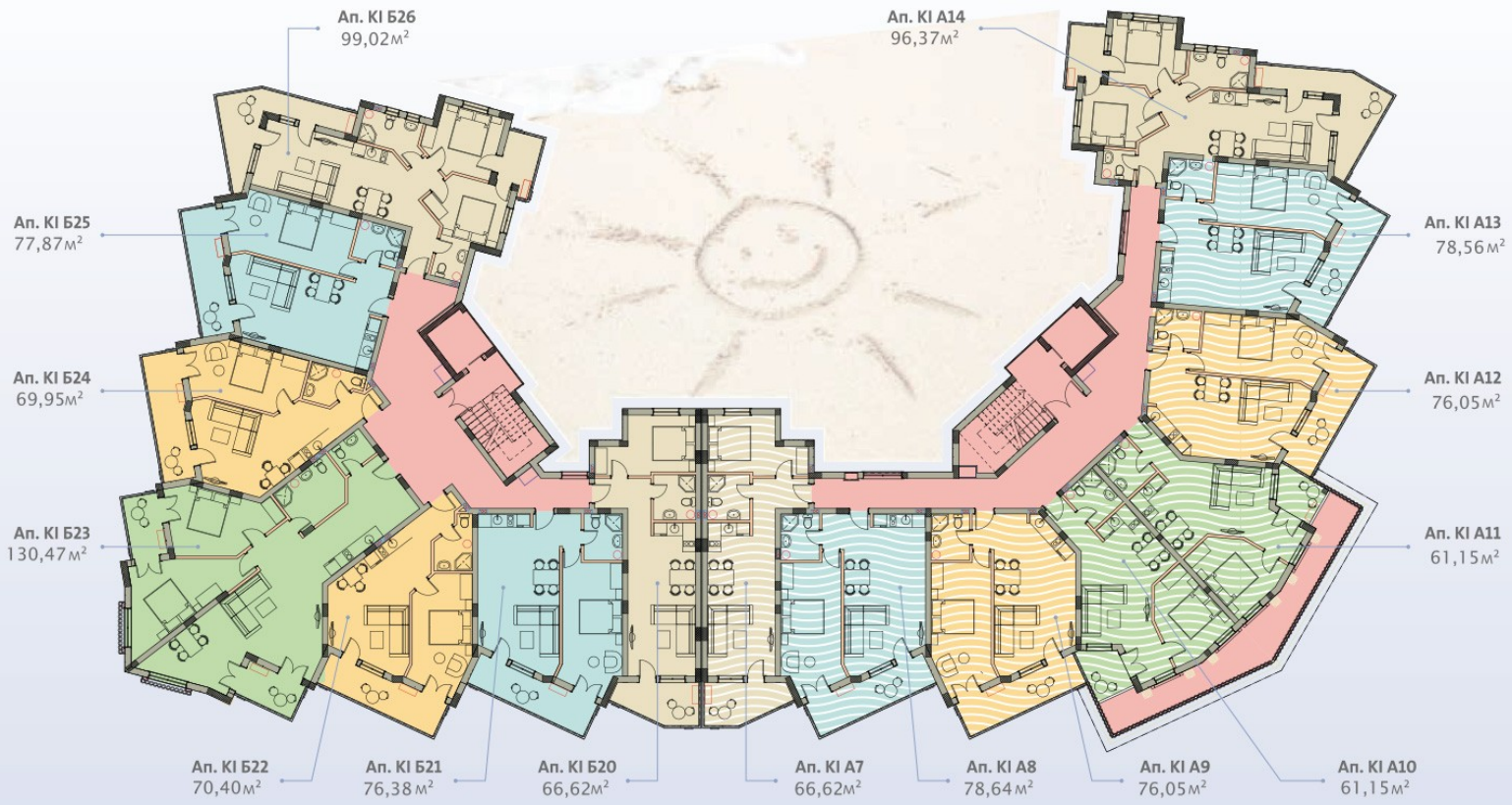




Уже с третьего этажа из окон открывается полноценный морской вид. В зависимости от ваших предпочтений, возможно выбрать апартаменты с видом на бассейн и внутренний двор

КОРПУС · 1 :: ЭТАЖ

3

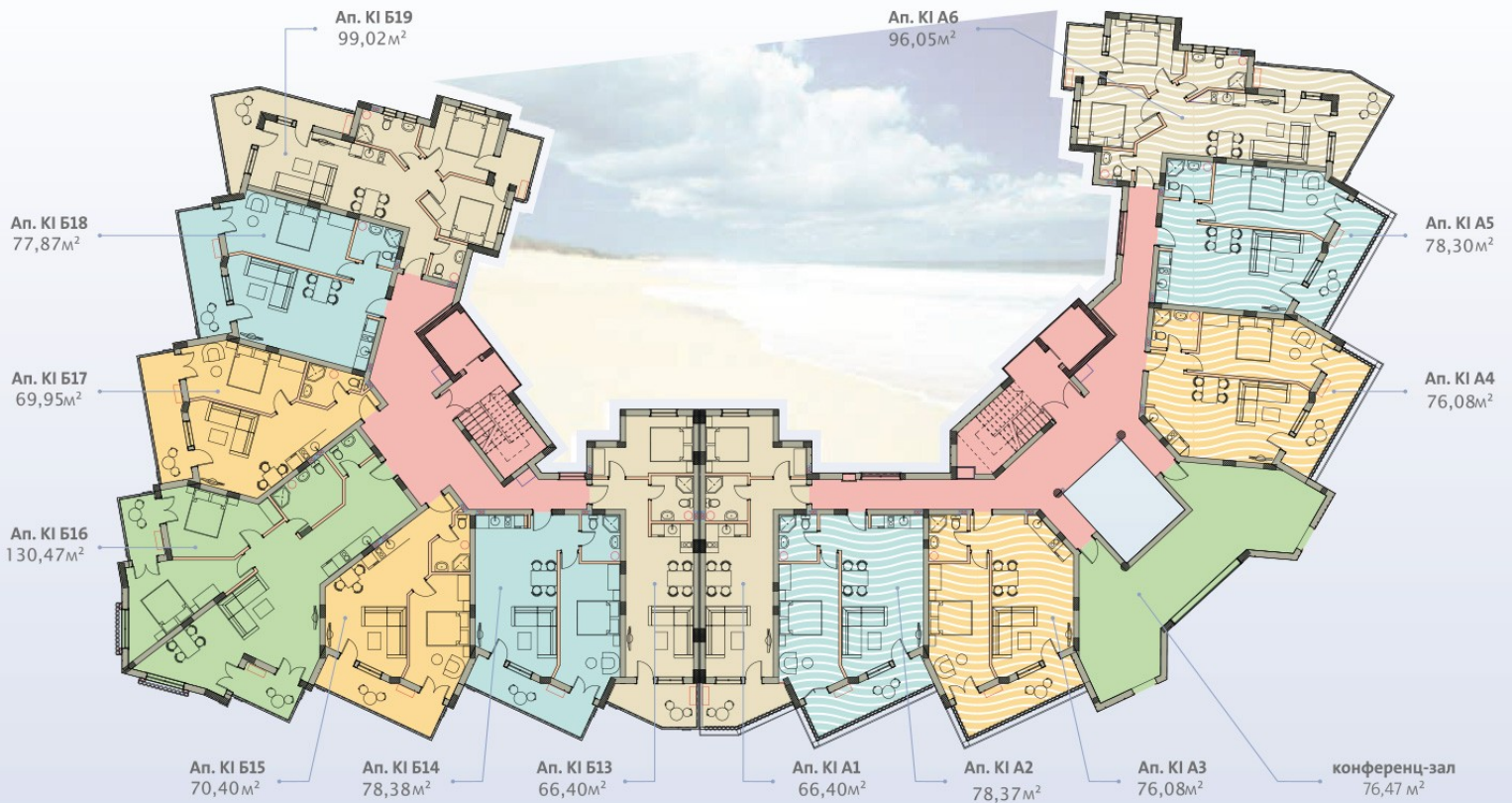




Второй этаж соединяется с первым атриумом, выполненном в оригинальном стиле и являющимся несомненной изюминкой всего комплекса

КОРПУС · 1 :: ЭТАЖ

2

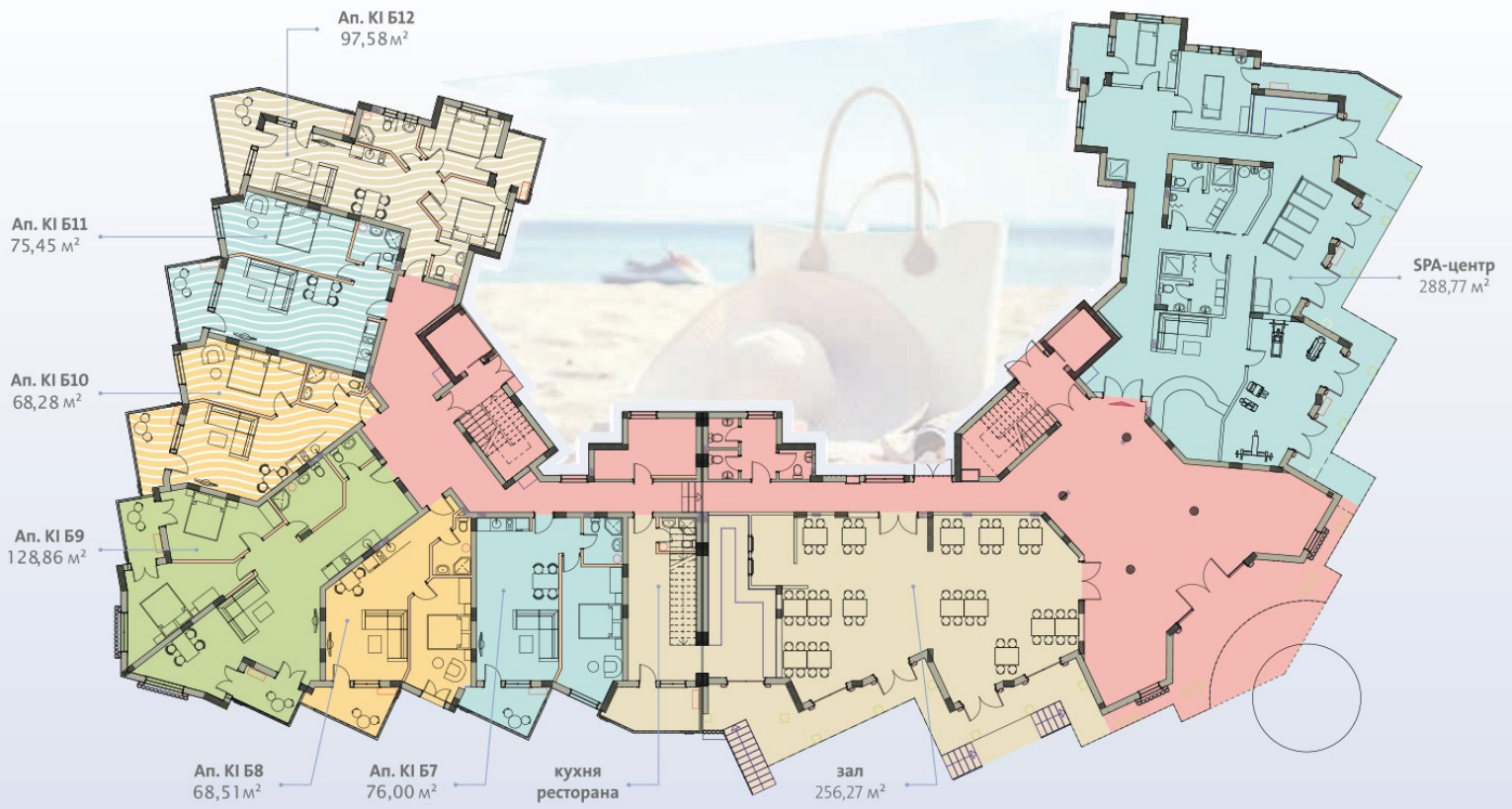




На первом этаже располагаются лобби, SPA-центр, а также несколько апартаментов небольшой площади с оптимальной планировкой

КОРПУС · 1 :: ЭТАЖ

1



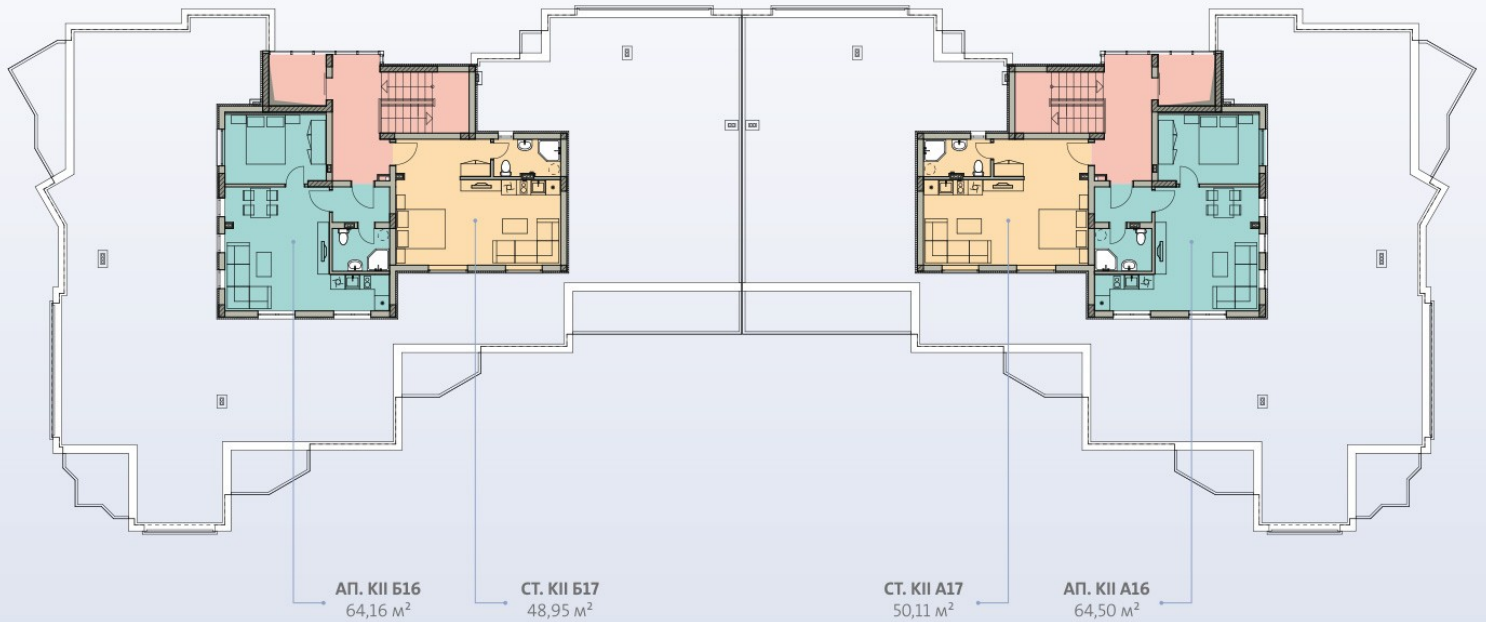


Апартаменты, расположенные в этой части корпуса, имеют собственные выходы к лужайке, где можно поиграть с детьми или просто погулять по траве

КОРПУС · 1 :: ЭТАЖ

0





BUILDING 1

AP. NUMBER	FLOOR	BEDROOMS	COMMON SPACE SQ.M	TOTAL AREA	APARTMENT VIEW	PRICE IN EURO
B8	1	ONE	10,64	68,51	GARDEN	109 616
B9	1	TWO	19,50	128,86	GARDEN	206 176
B11	1	ONE	11,22	75,45	GARDEN	120 720
B12	1	TWO	14,86	97,58	GARDEN	146 370
B14	2	ONE	13,04	78,38	PARTIAL SEA VIEW	156 128
B17	2	ONE	11,26	69,95	GARDEN	126 000
B26	3	TWO	16,30	99,02	PARTIAL SEA VIEW	178 236
B37	6	ONE	14,37	89.33+23.8	SEA VIEW	278 300
B38	6	ONE	10,10	63,47	PARTIAL SEA VIEW	126 960
A5	2	ONE	13,02	78,30	FOREST	140 940
A6	2	TWO	15,36	96,05	FOREST/POOL	177 690
A14	3	TWO	15,68	96,37	FOREST/POOL	163 830
A22	4	TWO	15,68	96,37	FOREST/POOL	168 650
A33	6	TWO	16,55	100+16.3	SEA VIEW / FOREST	248 882
A34	6	ONE	14,12	90.81+43.5	SEA VIEW / FOREST	282 051

Do you want to buy property for sale in Saint Vlas? We offer you a large selection of apartments, houses and

plots **BUILDING 2** you can buy at competitive prices!

Step up to t

With us y

tain in this

elp you

AP. NUMBER	FLOOR	BEDROOMS	COMMON SPACE	TOTAL AREA	APARTMENT VIEW	PRICE IN EURO
B1	1	ONE	12,83	80,83	GARDEN / POOL	121 245
B2	1	ONE	16,13	107,12	GARDEN / POOL	176 748
B3	1	STUDIO	8,97	56,89	GARDEN / POOL	79 646
B4	1	TWO	15,5	99,82	GARDEN / POOL	159 712
B7	2	ONE	17,29	110,80	PARTIAL SEA VIEW	199 440
B8	2	ONE	14,47	83,53	PARTIAL SEA VIEW	142 000
B10	2	ONE	15,72	97,94	GARDEN / POOL	156 704
B11	3	ONE	13,39	80,07	PARTIAL SEA VIEW	144 126
B15	3	TWO	15,17	97,39	GARDEN / POOL	165 563
B17	4	STUDIO	9,82	48,95	SEA VIEW	146 850

