



+359 89-202-2011

+359 88-933-8334

+972 53-281-4559

(WhatsUp, Viber, Telegram)



AN ELITE QUARTER UNDER CONSTRUCTION IN THE BRIZ AREA, VARNA

Breeze quarter in Varna

The Briz quarter is located in the eastern part of Varna in the Primorsky district, on the southern side it borders on the Chaika quarter, on the northern part on the St. Nikola district.

Briz is one of the newest and most dynamically developing residential areas of the city.

The undoubted advantages of the area are its proximity to the Sea Garden, resorts, as well as the magnificent view of the sea, which opens here even from the lower floors of the buildings.

The area is home to the largest diagnostic, treatment and consultation university hospital complex in northeastern Bulgaria, serving people from all over the country - MHAT St. Marina. The quarter is close to the Technical University of Varna. There are 3 schools, 3 hypermarkets: Piccadilly, Billa, Kaufland, 4 hotels, a shopping center, banks, restaurants.

The area has convenient transport links to the city center and tourist complexes.





The surrounding area is served by 13 bus and 1 trolleybus public transport lines.

As part of the Varna Integrated Urban Transport project, a bicycle path has been built that will connect the center with neighboring schools, and a high-speed bus line that will connect the Briz microdistrict with the Vladislav Varnenchik microdistrict.

Varna is a beautiful city with a good climate and convenient geography, located close to major cities in Romania. Varna has excellent transport

links: port, airport. There are many universities in the city.

Varna's economy is the third largest in the country and attracts young people to the region.

Varna is suitable for permanent residence, for relocation for both young families and retirees, for investment, for renting out real estate both short-term and long-term.

When purchasing property in the city of Varna, it is always easy to resell it later, since the main client is the local population and your property price can increase by a percentage. You will always win!

Apartments near Primorsky Park from the developer in installments,

Varna

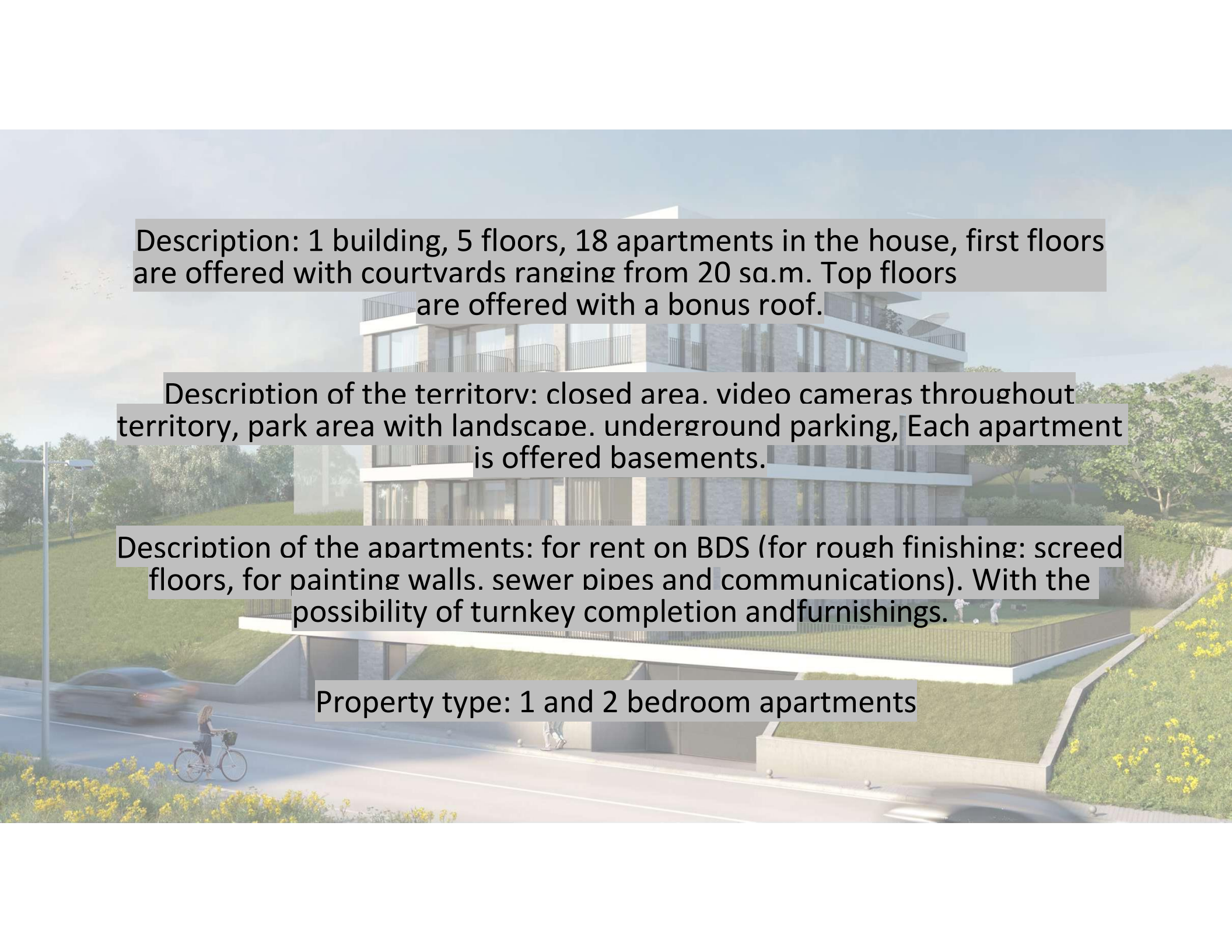
New, elite, modern residential buildings from the developer, located in the Briz area, a minute from the Primorsky Park, walking distance accessibility to the sea in Varna.



The area offers all the necessary infrastructure for life: two shopping center, school, two parks, medical center, institutions, banks, etc.

It is important to note that the area is new, therefore it is surrounded by modern houses and creates a wonderful impression of neighboring buildings, views of the sea, park, and mountains.





Description: 1 building, 5 floors, 18 apartments in the house, first floors are offered with courtyards ranging from 20 sq.m. Top floors are offered with a bonus roof.

Description of the territory: closed area. video cameras throughout territory, park area with landscape. underground parking, Each apartment is offered basements.

Description of the apartments: for rent on BDS (for rough finishing: screed floors, for painting walls. sewer pipes and communications). With the possibility of turnkey completion and furnishings.

Property type: 1 and 2 bedroom apartments

PRICE LIST
Object 1.5



READINESS DEGREE		
ACT 14	ACT 15	ACT 16
WAITING		
PERMISSIONS		

Apartment no.	Floor	Imota type	Square footage in sq.m.	Price in euros 70%/30%	Price in euros 50%/40%/10%	Price in euros 30%/30%/30%/10%
3	1	2 bedrooms	118,93	209 317	222 399	235 481
4	1	2 bedrooms	114,95	202 312	214 957	227 601
5	2	1 bedroom	79,25	139 480	148 198	156 915
6	2	2 bedrooms	112,38	203 970	210 151	222 512
7	2	2 bedrooms	99,15	179 957	185 411	196 317
8	2	2 bedrooms	114,95	195 989	214 957	227 601
9	3	1 bedroom	84,29	148 350	157 622	166 894
12	3	1 bedroom	81,28	143 053	151 994	160 934

Parking space 35,000 euro

Многофамилна жилищна сграда

с подземен гараж, находяща се в УПИ ХХХVI-2787,2790 , кв.5,
по плана на ж.к. "Бриз", гр. Варна

+359 89-202-2011

+359 88-933-8334

+972 53-281-4559

(WhatsUp, Viber, Telegram)



перспективен изглед 01

ОТ ЮГОИЗТОК



перспективен изглед 02

от северозапад



етаж -01

кота -8.35
 мащаб 1:100



паркоместа:

P1, P2, P3, P6, P8, P16, P19

12.5 кв.м.

P4	P5	P7	P9
17.9 кв.м.	19.4 кв.м.	12.1 кв.м.	13.4 кв.м.
P10	P11	P12, P13	P14
11.9 кв.м.	12.7 кв.м.	13.7 кв.м.	14.4 кв.м.

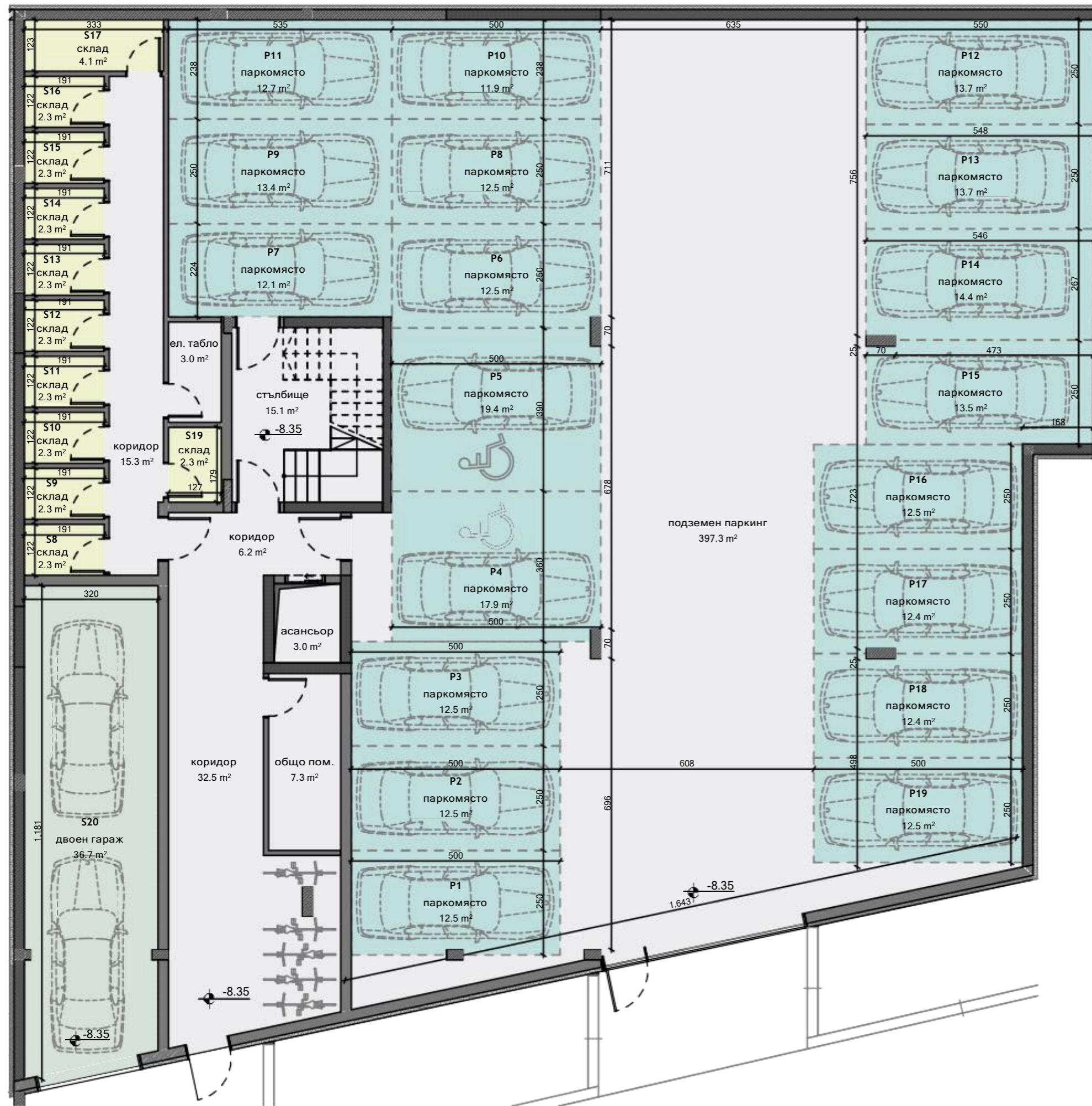
P15	P17, P18
13.5 кв.м.	12.4 кв.м.

гаражи:

S20
 36.7 кв.м.

складове:

склад S8	склад S9	склад S10	склад S11
2.3 кв.м.	2.3 кв.м.	2.3 кв.м.	2.3 кв.м.
склад S12	склад S13	склад S14	склад S15
2.3 кв.м.	2.3 кв.м.	2.3 кв.м.	2.3 кв.м.
склад S16	склад S17	склад S19	
2.3 кв.м.	4.1 кв.м.	2.3 кв.м.	

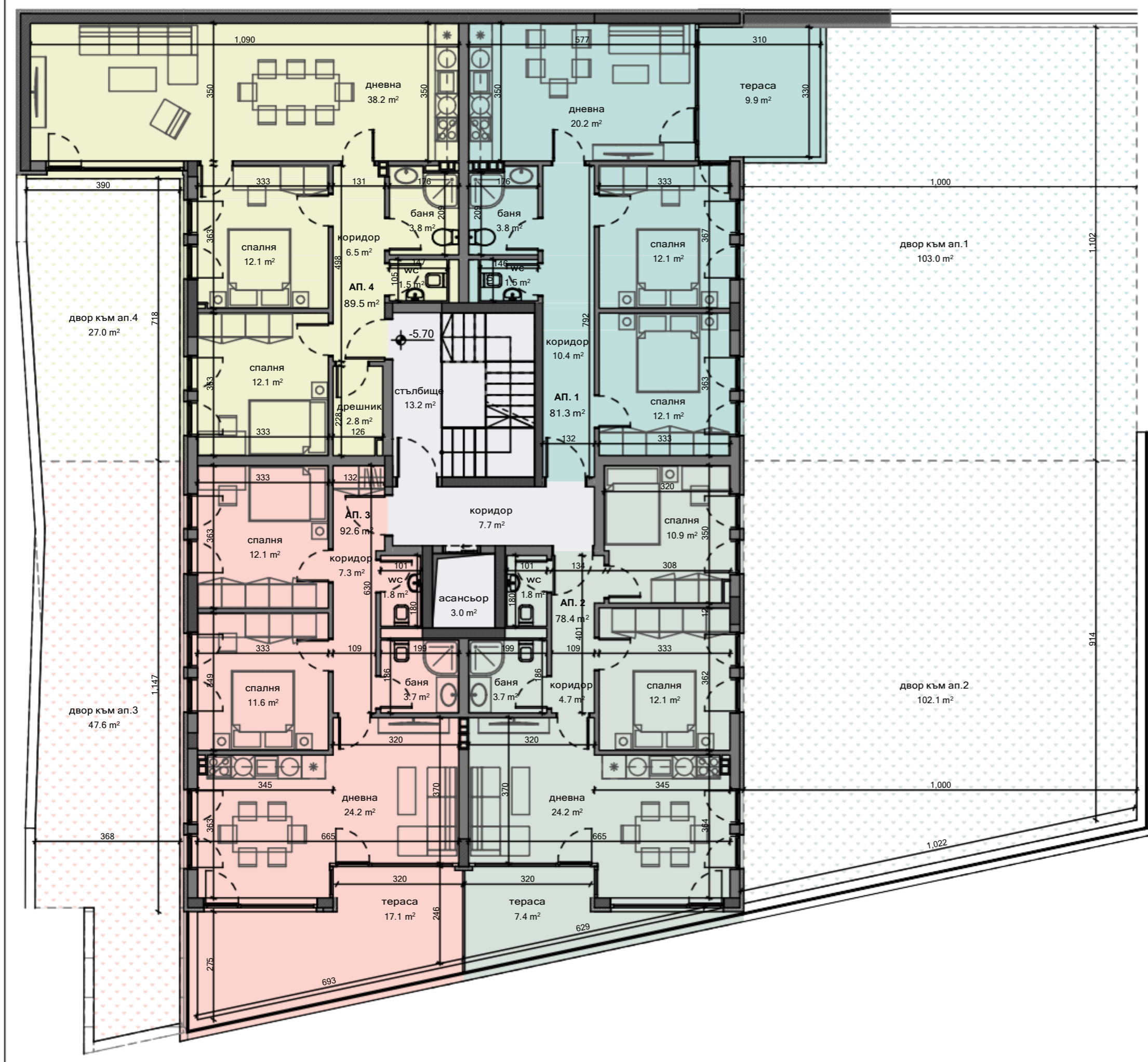


етаж 01

кота -5.70
 мащаб 1:100



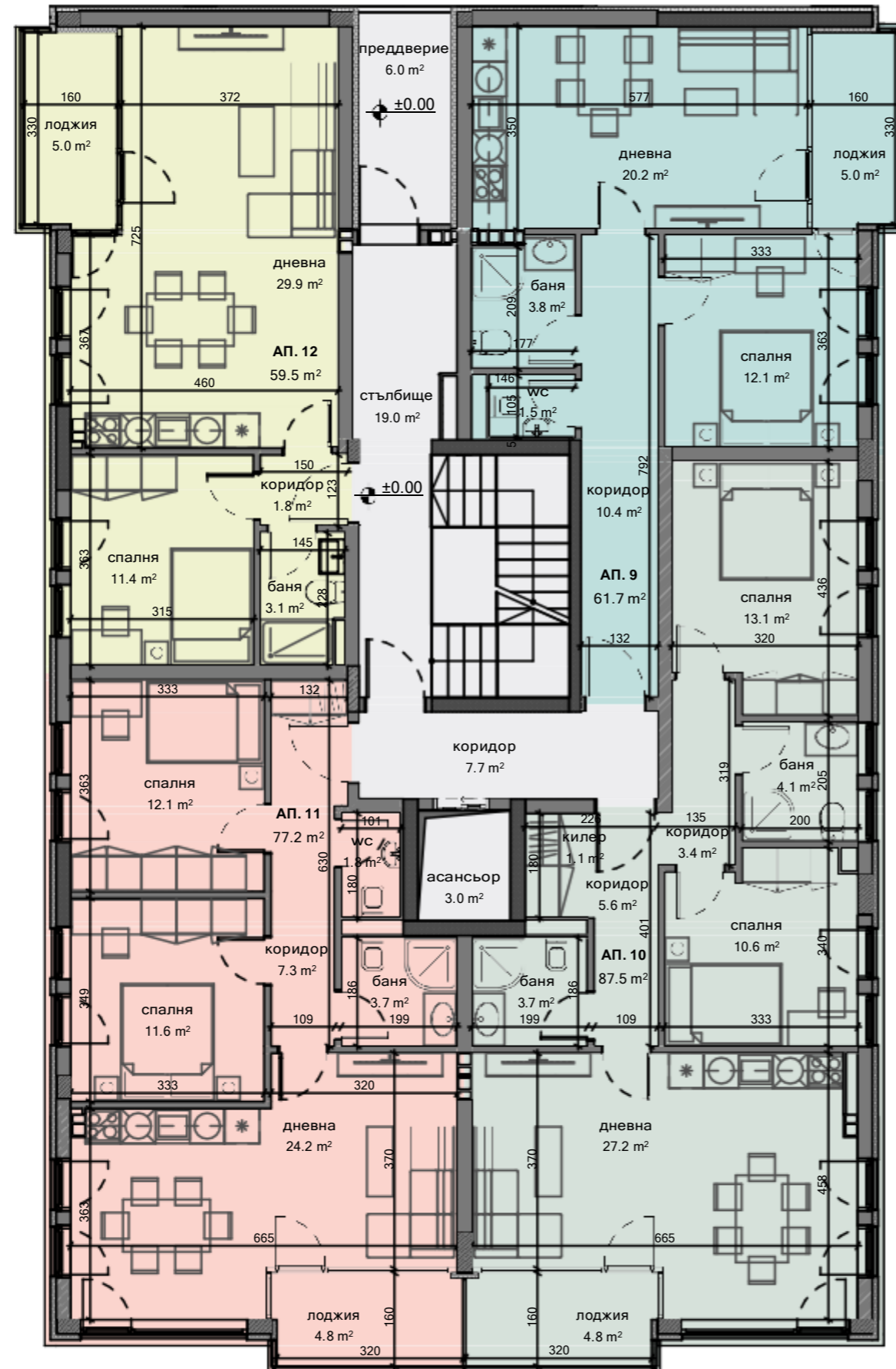
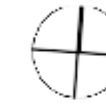
апартамент 1	двор към ап. 1
81.3 кв.м.	103.0 кв.м.
апартамент 2	двор към ап. 2
78.4 кв.м.	102.1 кв.м.
апартамент 3	двор към ап. 3
92.6 кв.м.	47.6 кв.м.
апартамент 4	двор към ап. 4
89.5 кв.м.	27.0 кв.м.



етаж 03

кота ±0.00

мащаб 1:100



апартамент 9

61.7 кв.м.

апартамент 10

87.5 кв.м.

апартамент 11

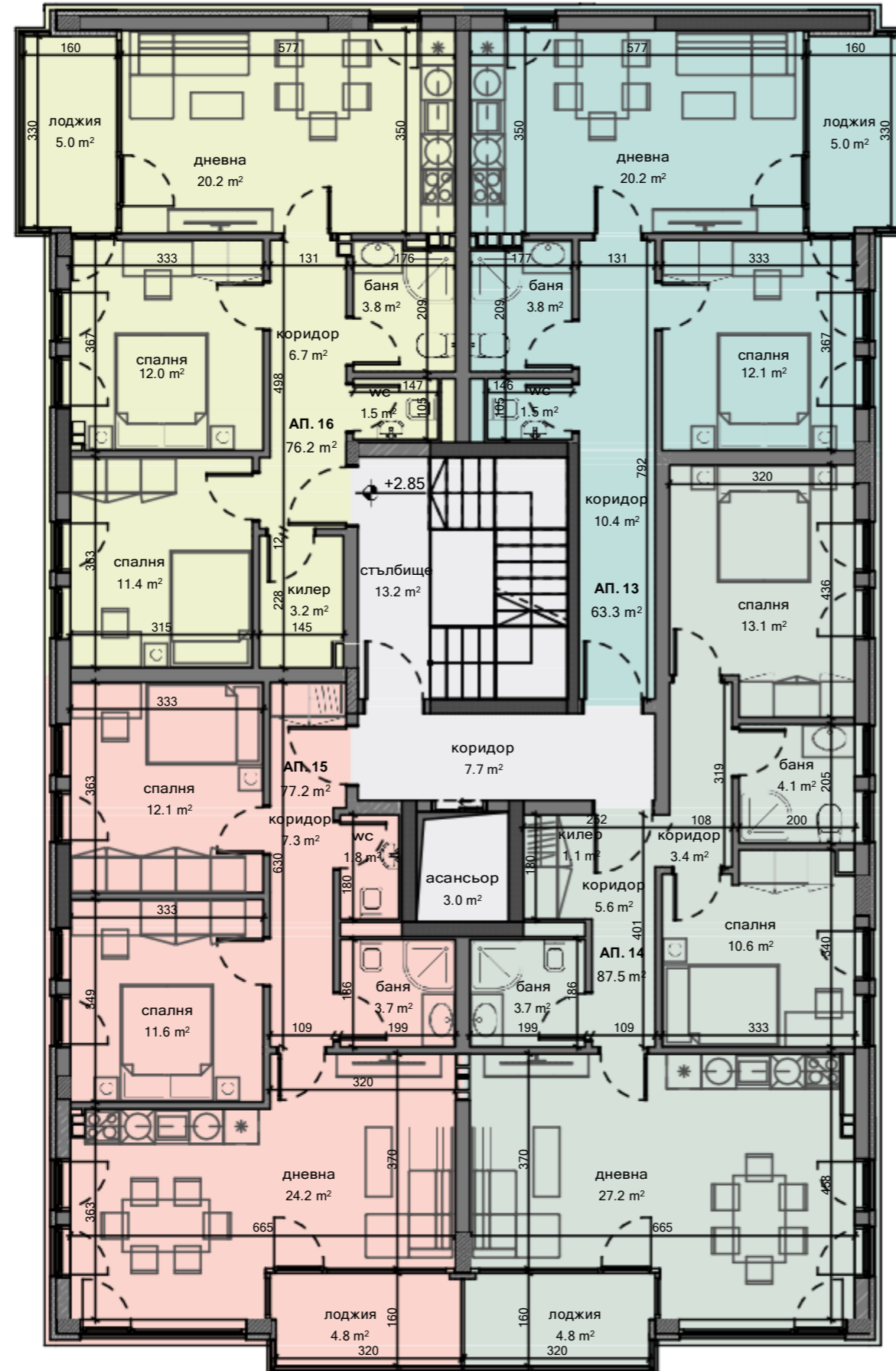
77.2 кв.м.

апартамент 12

59.5 кв.м.

етаж 04

кота +2.85
мащаб 1:100



апартамент 13

63.3 кв.м.

апартамент 14

87.5 кв.м.

апартамент 15

77.2 кв.м.

апартамент 16

76.2 кв.м.

етаж 05

кота +5.70
мащаб 1:100



апартамент 17

71.6 кв.м.

покривна тераса с право на ползване от ап.17

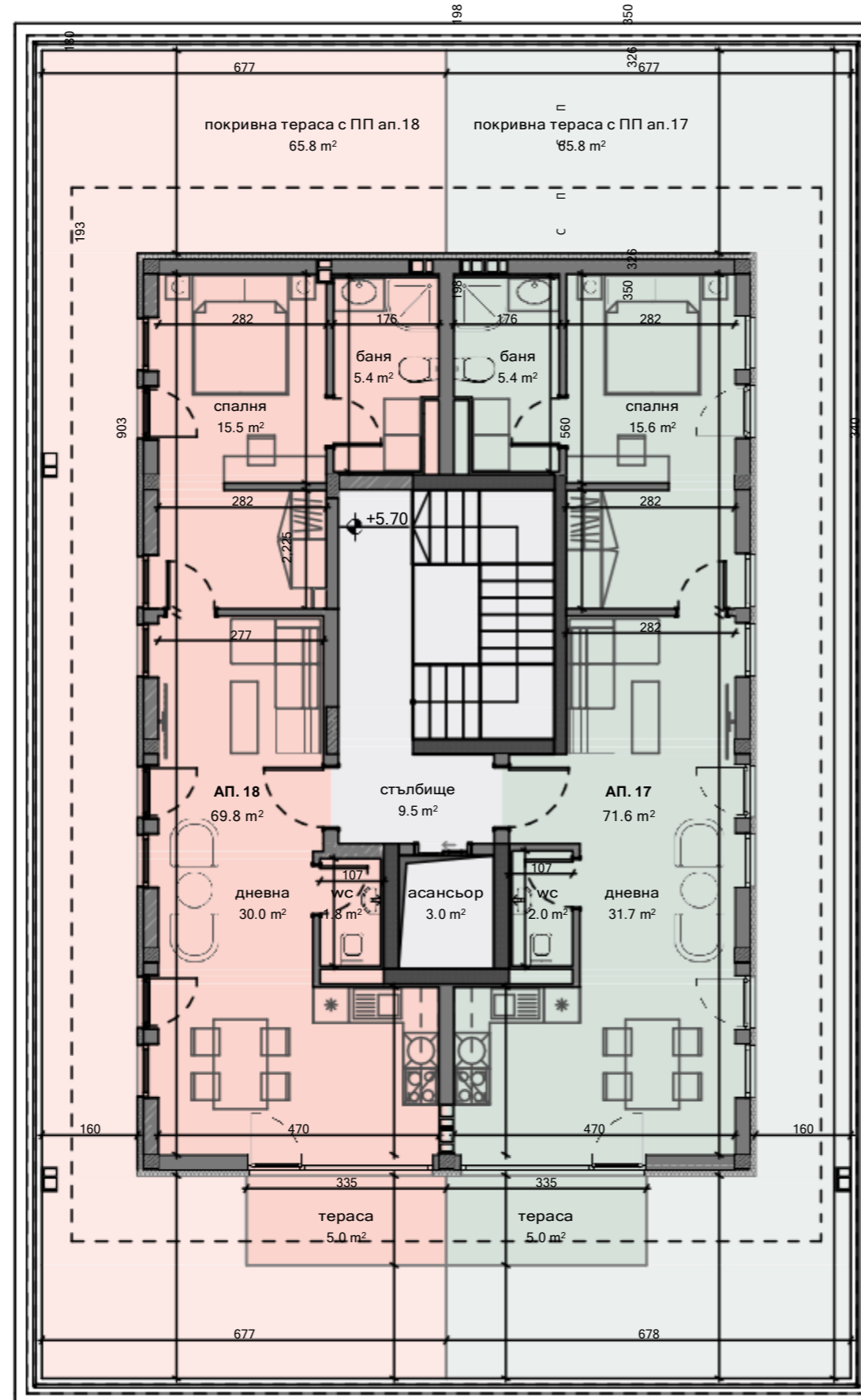
65.8 кв.м.

апартамент 18

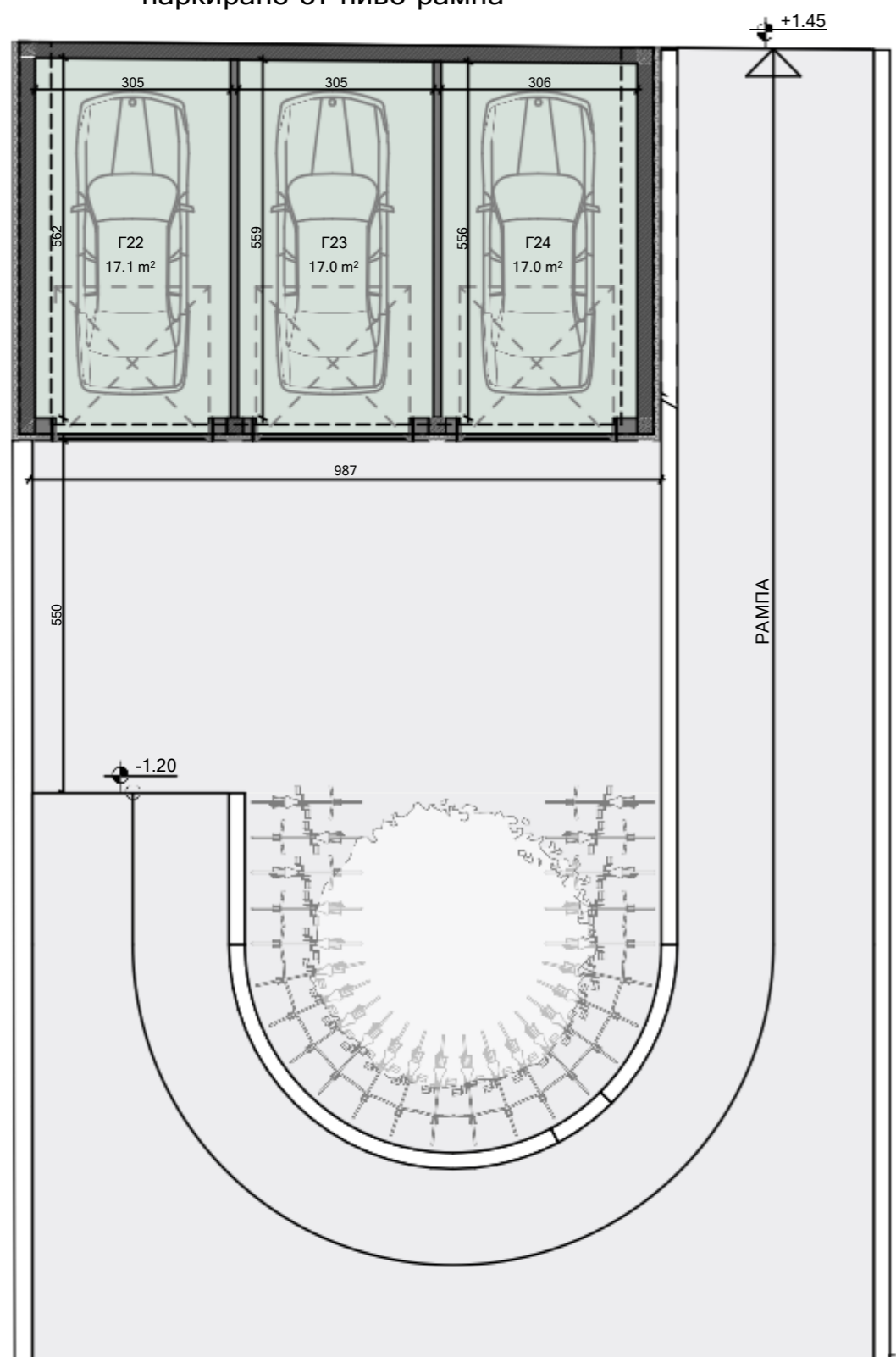
69.8 кв.м.

покривна тераса с право на ползване от ап.18

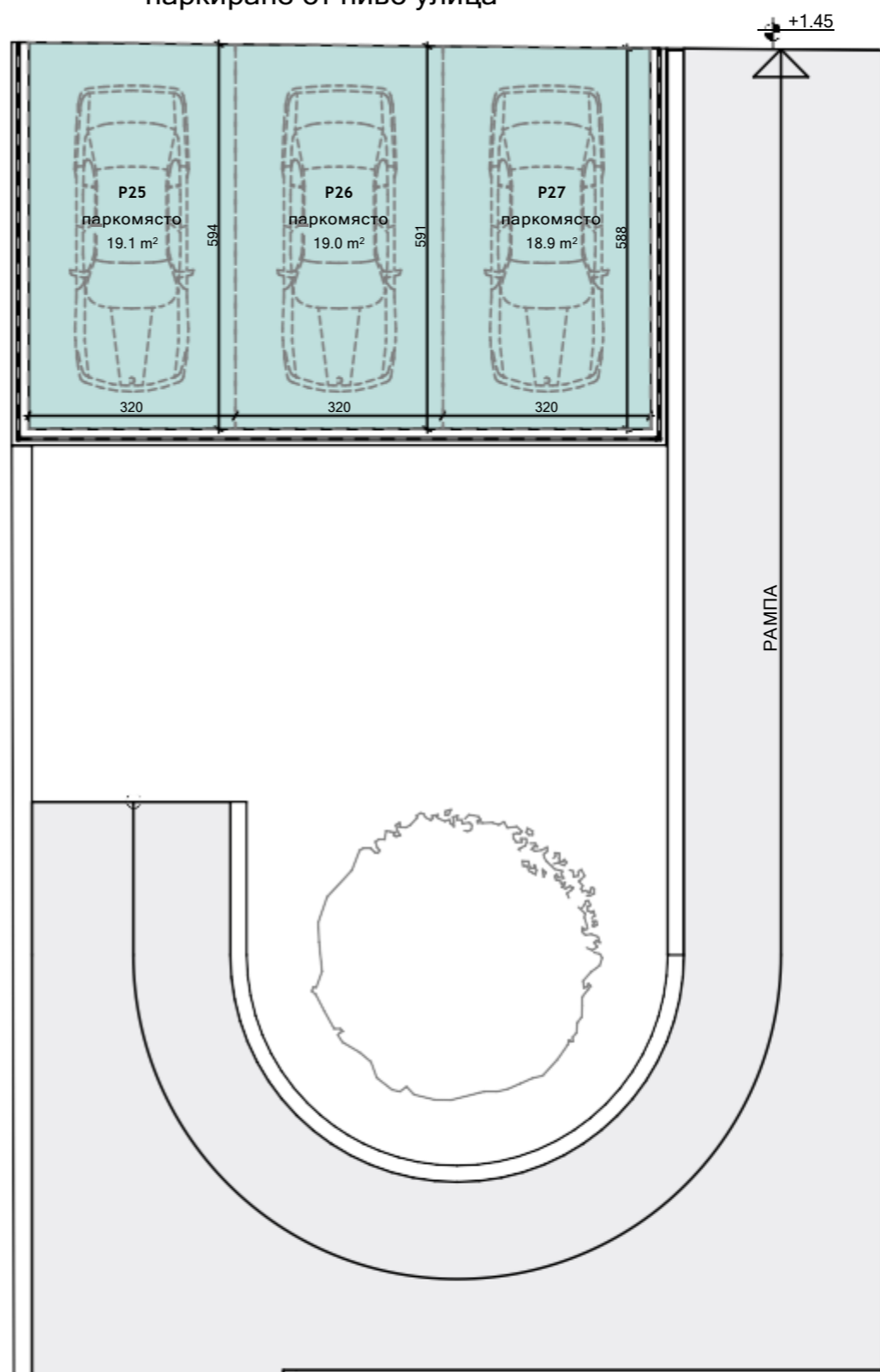
65.8 кв.м.



паркиране от ниво рампа



паркиране от ниво улица



паркиране

кота -1.20/+1.45
 мащаб 1:100



паркоместа:

Р25

19.1 кв.м.

Р26

19.0 кв.м.

Р27

18.9 кв.м.

гаражи:

Г22

17.1 кв.м.

Г23

17.0 кв.м.

Г24

17.0 кв.м.

