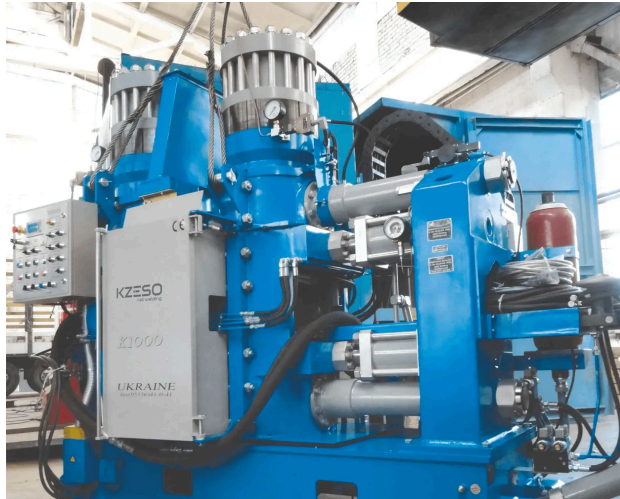
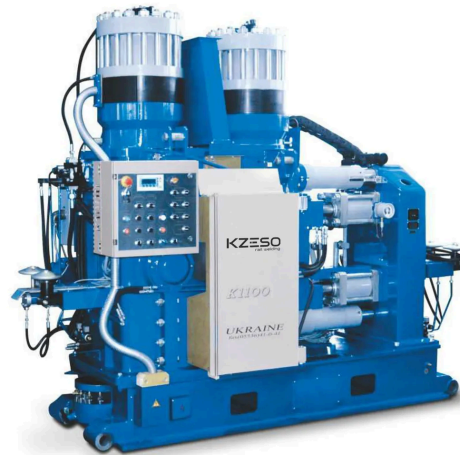


Stationary Flash Butt Rail Welding Machine K1000/K1100

**K1000****K1100**

KZESO stationary rail welding machines use more than a dozen innovations protected by international patents in the field of welding technology, control systems and programming of welding processes, as well as designs of the main units of welding machines, which are distinguished by the original layout of mechanical elements, welding circuit, the use of high-speed hydraulic drives and new principles of rail centering. The quality of welded joints meets the requirements of international standards.

The K1000 machine is designed for flash-butt welding of rails with a cross-section of 5000 mm² up to 10000 mm² using continuous flashing or pulsed flashing in stationary conditions with deburring immediately after welding. By special order, the machine can be manufactured for welding other profiles with a cross-section of up to 18,000 mm².

The K1100 machine is a modernization of the K1000 machine for welding rails made of alloy steels as well as for welding rail sections with insulated joints.

In order to weld rail sections containing insulated joints, preliminary alignment by external roller centralizers is carried out along the base of the rail instead of the neck, as in the K1000 machine.

In order to enable unobstructed flow of the section with insulated joints in K1100 machine through the welding zone of the machine, the design of the deburring unit and protective shutters has been changed.

The K1000, K1100 machines are equipped with a welding process control system, built on the latest Siemens programmable controller and provides computerized certification of the technological parameters of welding of each joint.

Specifications

	K 1000	K 1100
Rated mains voltage, V	380	380
Mains current frequency, Hz	50	50
Maximum secondary current, kA	84	84
Rated continuous secondary current, kA	19	19
Short circuit power, kVA	600	600
Welding power at DC = 50%, kVA	180	180
Output at welding of rails 60E1, weld/h, not less	21	21
Maximum operating pressure in the hydraulic system, MPa	20	20
Maximum upset speed, mm/s	100	100
Maximum upset force, kN	800	800
Maximum clamping force, kN	2000	2000
Weight of welding machine, kg	9350 (12850 set)	12850 set
Overall dimensions, mm		
- welding machine	5660x1640x2782	5660x1640x2782
- control cabinet	1290x690x1730	1290x690x1730
- pump station	1300x745x1420	1300x745x1420
- recording system cabinet	690x690x1750	690x690x1750