



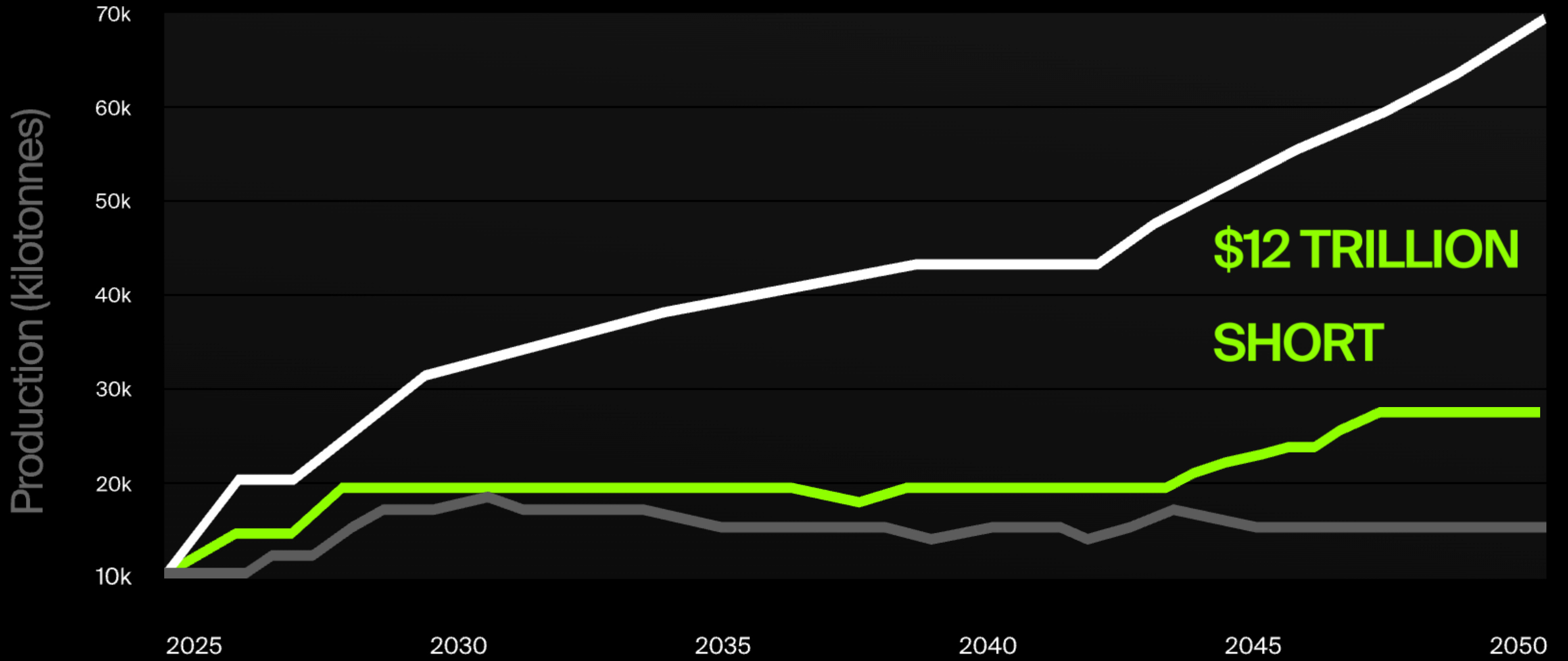
Beholder

Spacetech AI for metals, minerals and energy
resources exploration



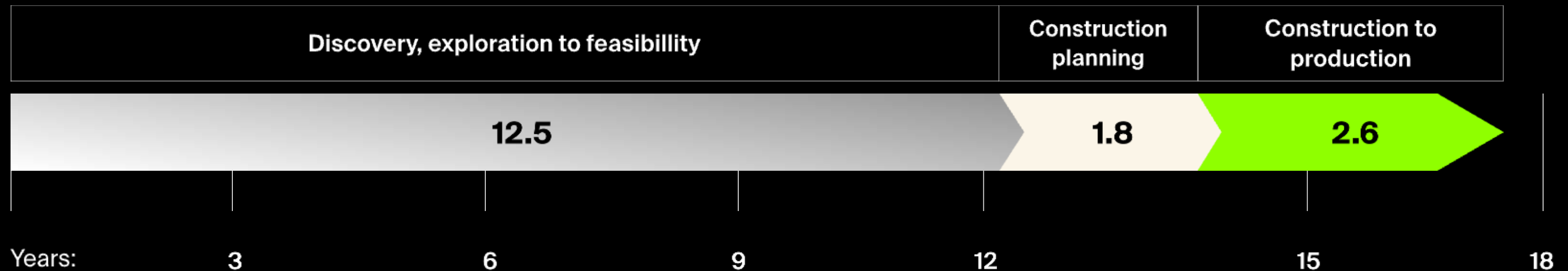
● Mine supply ● Recycling ● Supply Gap

Data by:
<https://www.koboldmetals.com>



Global average time from discovery to production

according to IEA



Meet Beholder AI



AI for Critical minerals exploration to upscale
geological researches to Planetary level

Beholder



State of the art neural network combines **35 data inputs** to make predictions of mineral deposits with **up to 96% accuracy rate.**



No deforestation, no Greenhouse gas emissions.



Any site is accessible at any time:

- The highest cost efficiency ever for exploration history
- No limits to scale

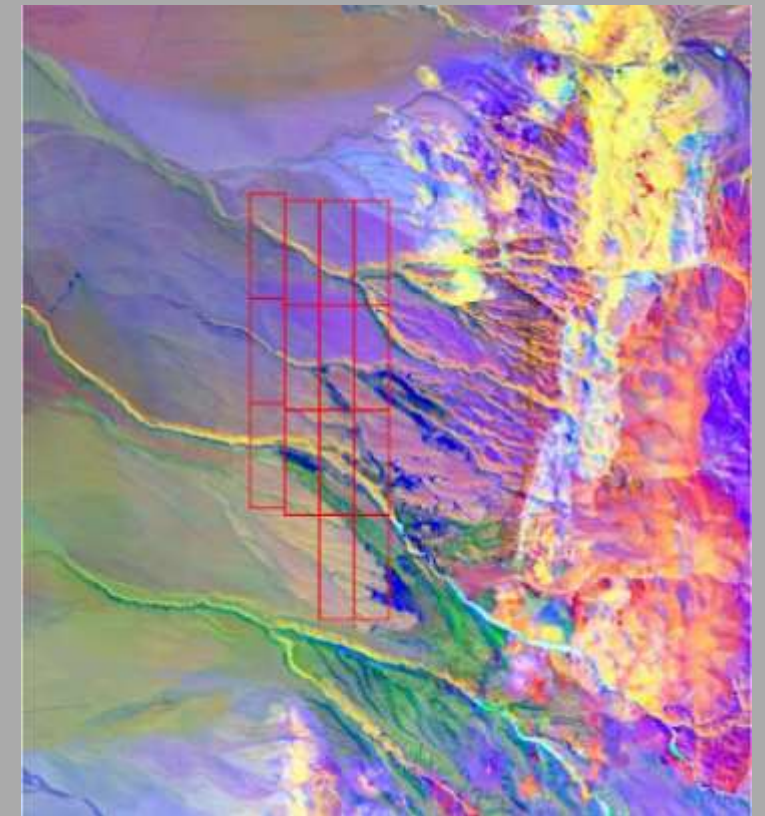
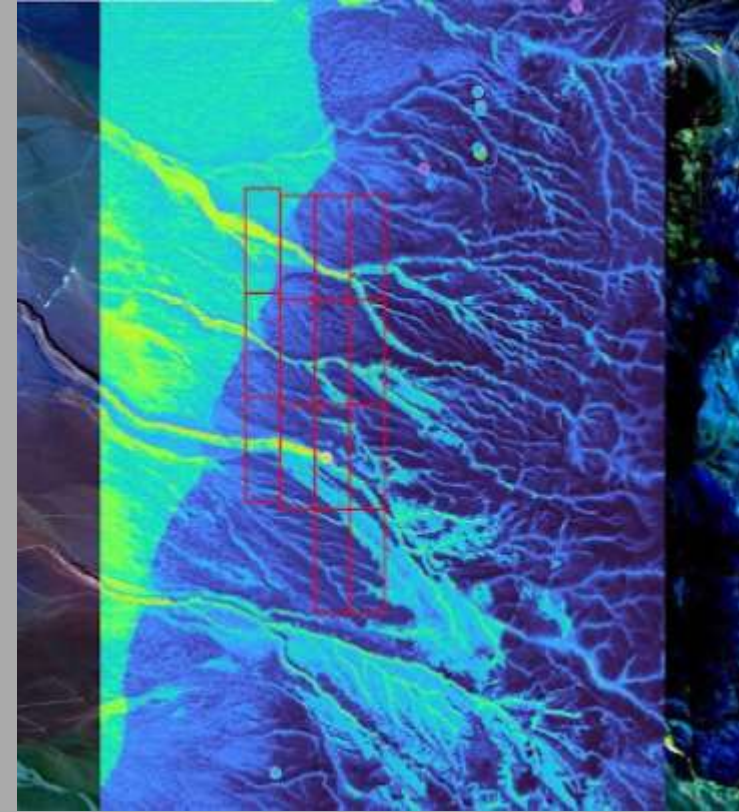


**8 POCs successfully
accomplished**

Pilot

We started prospecting metals and ores in the La Escondida area of Chile, which is known as the largest copper mine.

We've trained AI to find high-sulfidation suits and build association maps based on scarce local data and the amount of satellite imagery with a timescale over the past 5 years. We have detected the presence of silver, gold, cobalt, and bismuth in reasonable amounts and mapped an area of 15 sq km.



Phase I

Business model:

Data provision

Revenue source	Clients	Deliverables	Pricing model
Paid pilots	Mining projects investors/operators (start with Repsol, Shell, PGNiG)	Reports + Insights	Data provision and consultancy fees EUR 50,000-150,000 per project
Research projects	Governments, research institutions	Raw data provision + Reports	Custom, EUR 10,000-200,000 per project
Beholder Hub	Exploration geologists, auditors, prospecting and mining companies	SaaS platform + collaboration platform for geology specialists	Subscription based EUR 15/month - basic account EUR 500/month - full data access
Mineral Rights Evaluation Tool	Mineral and exploration rights owners	Reports + sales of rights facilitation	500 USD/ hectare + 10% commission on the sale

Management Team



Andrii Sevryukov

- Serial entrepreneur 10 years as CXO and founder of tech companies
- 5 years in Remote sensing and Advisory for satellite data and digital technologies for corporations
- 2 exits with SUIC and Coresoft



Daniil Lubkin

- M.Sc. in Economics
- 6+ years in management, sustainability and business development
- Expert in early-stage development, scaling and fundraising



Serhii Lubkin

- M.Sc. in Economics
- Serial entrepreneur and founder of several startups
- 10+ years experience in marketing, business development and project management

Goals



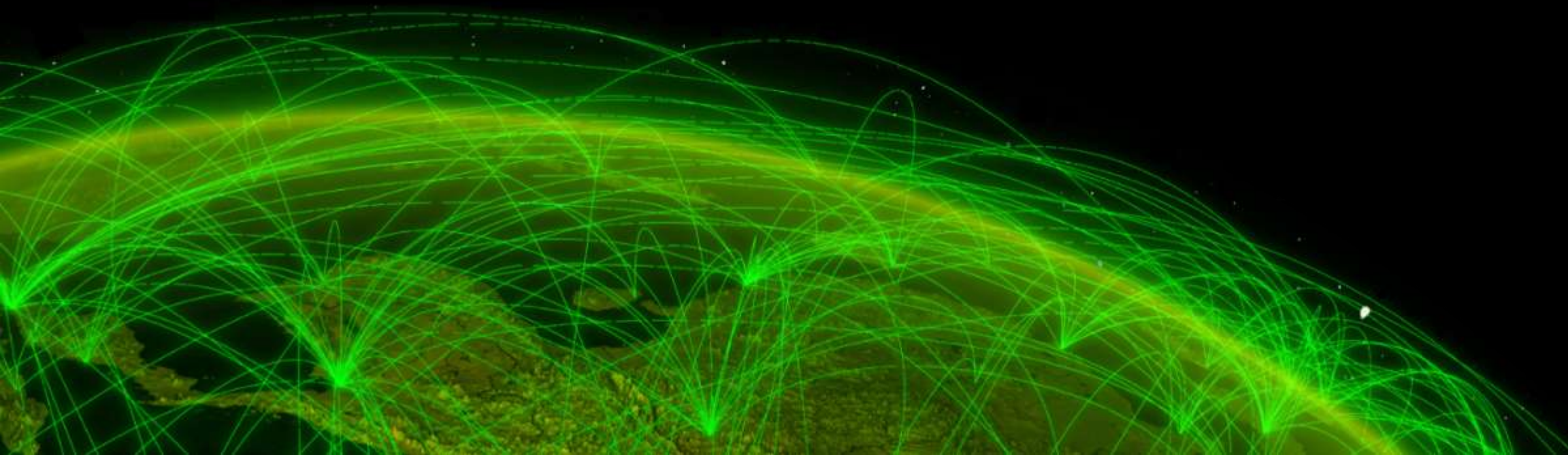
Develop new prospecting principals and increase accuracy to 96%



MOUs with Repsol, Equinor, and Total Energies to participate in their Critical Minerals exploration projects



Streamline sales starting in most friendly markets - **US, Australia, and Canada**





Thank you for your attention!

Questions
are welcome

+1 (860) 780-1854
team@beholder.earth
daniil.lubkin@beholder.earth

Geobeholder OU, Tallinn, Estonia.

