



All Rights Reserved

Materials and specifications are subject to change without notice.
Featured machines in photos may include additional equipment.
See your XCMG dealer for available options.



XE265C

Hydraulic Excavator



www.xcmg.com

XCMG Regional Departments:

Europe	(+86-516) 87739703 87739218 87739537	Africa	(+86-516) 87735009 87739222 87739283
West Asia & North Africa	(+86-516) 87739702 87739202 87739223	Central Asia	(+86-516) 87739236 87739239 87739538
Asia-Pacific	(+86-516) 87739128 87739500 87739529	America	(+86-516) 87739285 87739551 87739710

XUZHOU CONSTRUCTION MACHINERY GROUP IMP. & EXP. CO., LTD
Add: No.1, Tuolanshan Road, Xuzhou Economic Developing Zone, Jiangsu, China 221004

Fax: (+86-516) 87739230
E-mail: export@xcmg.com

Ecological and economical

Ecological and economical

- ▶ ISUZU 128.5kW high-power engine is more fuel saving
- ▶ New Japan Kawasaki main pump can ensure high efficiency and reduced leakage
- ▶ Efficiency main valve increases relief pressure and reduces pressure loss
- ▶ Smart matching technology ensures higher operating efficiency and lower fuel consumption,

Multiple application

- ▶ Different boom, stick and bucket combinations maximize utilization in different conditions
- ▶ Multi-functional intelligent work tool control system can meet different operating requirements such as digging, breaking and dismantling
- ▶ Instantaneous boost function copes with complex working conditions

Comfortable and safe

- ▶ Air Conditioner and Heater with Double stage air filter ensure the appropriate temperature
- ▶ Silicone rubber shock absorber is adopted in the cab
- ▶ Air-suspension seat equipped with electric heating function
- ▶ Integrated control panel and large display screen provide multiple information
- ▶ ROPS and FOPS Cab can improve cab safety

Safe and durable

- ▶ Integral brazing technology improves lifespan
- ▶ Upgrade undercarriage structure to improve load bearing performance
- ▶ Strengthened key stress-bearing parts of chain links

Convenient maintenance

- ▶ Easy maintenance design concept makes your maintenance done without dead angle
- ▶ Maintenance-free air prefilter

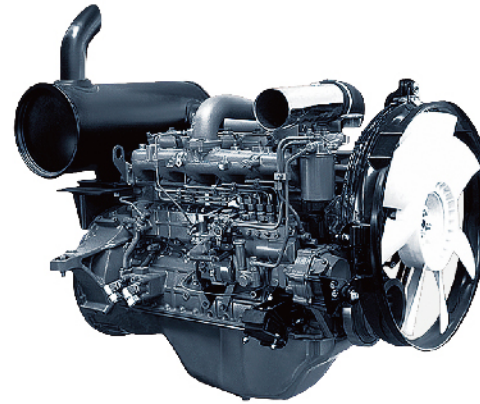
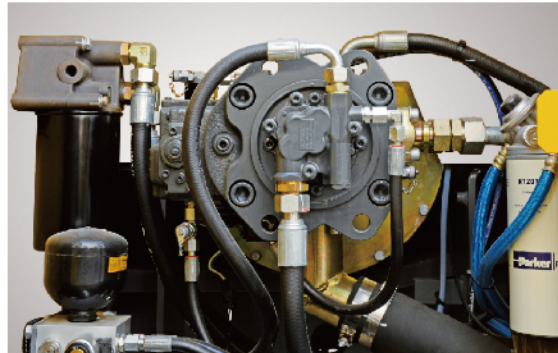
Excellent after-sales service

- ▶ Global after-sales service system and quick response mechanism
- ▶ Real-time technical consultation and maintenance

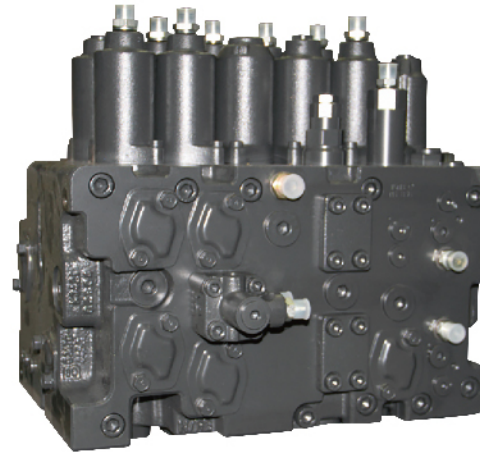


Ecological And Economical

- ▶ ISUZU 128.5kW high-power engine featuring low speed, high torque and high-pressure injection, can provide more power and better fuel economy, and meet Tier II emission standards.



- ▶ New Japan Kawasaki main pump is fully upgraded with larger displacement, which is 7% higher than that of the previous generation. It can ensure high efficiency and reduced leakage under the same pressure. With large power output, more work can be done.



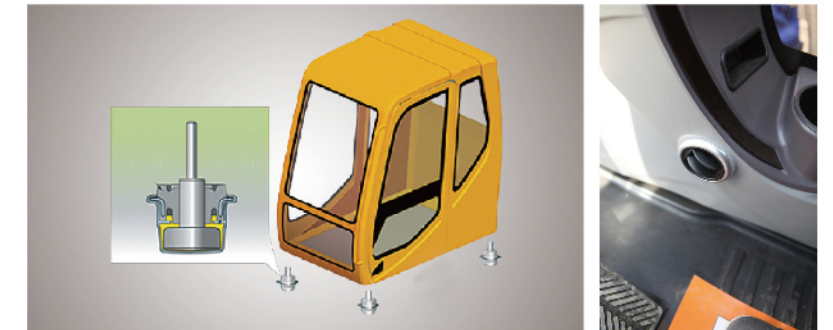
- ▶ Equipped with new generation of high efficiency main valve with the functions of confluence and regeneration, the relief pressure is increased, the pressure loss is smaller, and the working ability is more outstanding.
- ▶ Smart matching technology, the machine can achieve higher operating efficiency and lower fuel consumption, and its fuel efficiency ratio is ahead of the same tonnage models. After continuous optimizations and improvements of the hydraulic system, the control performance is further strengthened, maneuverability is more refined, and leveling and loading performance is better.

Comfortable And Safe

- ▶ Optional ROPS and FOPS device and guards can improve cab safety.
- ▶ The cab is structurally reinforced and the seat is equipped with safety belts
- ▶ Prevent mis-operations with safety lockout handle
- ▶ Equipped with fire extinguisher, safety escape hammer and anti-skid device

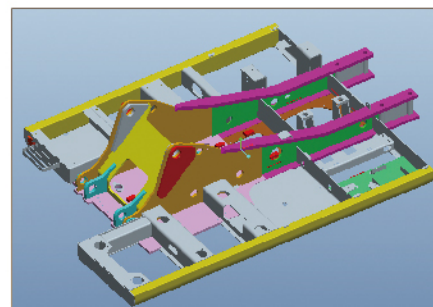


- ▶ Air conditioner and heater with double-stage air filtration: the ambient temperature inside and outside can be detected by the sensor and it can be automatically adjusted to a comfortable one. With the adjustable air vents at different positions, it can provide a comfortable environment for the operators.
- ▶ Silicone rubber shock absorber is adopted in the cab to reduce vibration and impact
- ▶ Comfortable high-performance seats: air suspension seats with electric heating functions can achieve multi-dimensional adjustment and isolation of vibration waves.
- ▶ A new generation instrument has an 8-inch large screen display (the largest one among the industry). The page layout is more detailed and the picture is clearer.

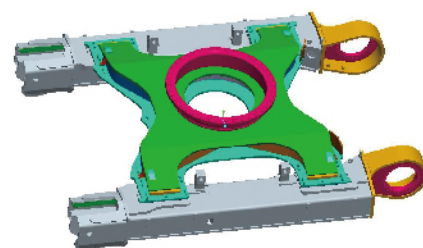


Reliable And Durable

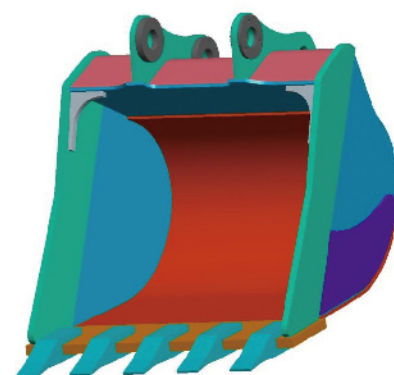
- ▶ Adopt the integral brazing technology. New-type radiator with positive pressure degassing type expansion tank can extend the pump life. It can quickly remove the gas within engine and waterway, reduce the rust and meet 50°C environment operation requirements.
- ▶ The turntable adopts a rigid box structure to provide higher strength. The engine mounting base structure is strengthened to improve shock absorption.



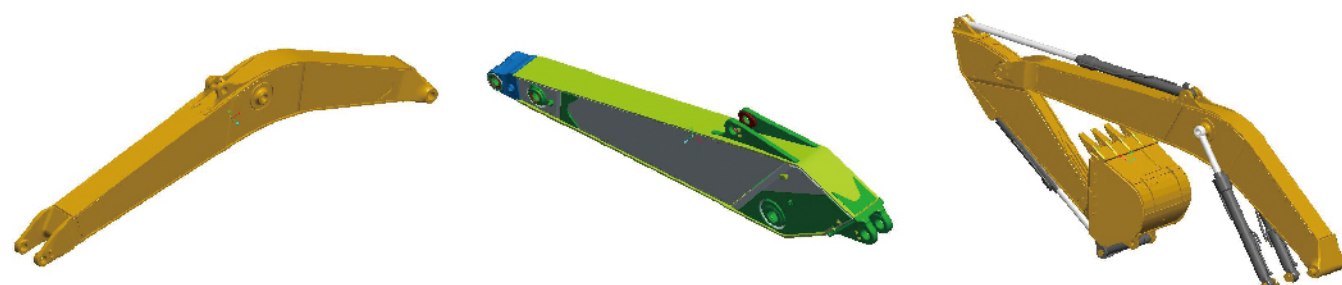
- ▶ With main body adopting H-frame rigid structure, the whole machine's strength is reinforced, and the turntable side frame adopts the D-tube structure to improve its ability to resist external impact.
- ▶ The travelling mechanism adopts strengthened key parts of the chain rails that take on stress to improve its strength and impact resistance, and the service life of the track is greatly improved. With strengthened X-beam section, and the strength of the end face is greatly improved by increasing the size, thickness and structure of the box beam.



- ▶ The butter dish is changed from welding parts to integral stamping parts, which ensures the installation stability of the sealing ring, prevents the sealing ring from wrinkling and improves the sealing performance.
- ▶ Replace with the XCMG new second generation bucket to make the force more reasonable and increase the durability.



- ▶ Adopt the Finite Element Analysis (FMA) to strengthen the key parts of the boom and arm. Use the new type of shaft locking mode and increase the plate thickness. The arm has the regeneration function, which can fully improve the operation efficiency, coordination and stability of the whole machine.



Maintenance And Service

- ▶ Accessible maintenance design reduces maintenance time by 10%. Integrate electrical box, air filter, diesel filter, oil filter and pilot filter to make maintenance and replacement convenient.



- ▶ Adopt maintenance-free air prefilter, which has self-cleaning function
- ▶ A wide range of after-sales service system, quick-response rescue mechanism to ensure that you use at ease

Multiple Application Conditions

The independently developed multi-functional intelligent work tool control system can be widely used for irrigation and water conservancy, river dredging, municipal construction and small mine construction. It can meet different operating requirements such as digging, breaking and dismantling, and its working condition adaptability is further strengthened.

It is designed with instantaneous boost function, and you can immediately raise the boom speed or the travel traction by pressing this button.

The new control system uses CAN bus, with the monitor for display and the controller for signal acquisition and output, the monitor, GPS controller and engine ECM are connected via CAN bus, which can achieve faster data management and more efficient control.

Standard Equipment

	Name of equipment	XE265C
Engine	Engine model	CC-6BG1TRP-05
	Automatic preheating	
	Oil-water separator with water level indication sensor	
	Radial seal air cleaner	
	Air prefilter	
	Radiator dust screen	
	Fuel marker	
	Air pressure difference indicator	
	Automatic idle speed	
	Boom/arm flow regeneration	
Hydraulic system	Auxiliary hydraulic valve	
	Reverse rotation damping valve	
	Automatic rotation parking brake	
	Hydraulic buffer valve	
	Straight hydraulic circuit	
	Boom priority valve	
	Rotary logic valve	
	Hydraulic oil ISO VG 46	
Cab and interior trim	Rotary anti-sway valve	
	Fully adjustable mechanical suspension seat	
	Adjustable seat armrest	
	Seat belt (51 mm [2 "] wide)	
	Openable windscreen with auxiliary device	
	Double laminated windshield and other toughened windows	
	Sliding door upper window	
	Bi-directional air outlet air conditioner with defroster (automatic type) (pressurization function)	

Color liquid crystal display capable of displaying warning information, filter / liquid replacement information and working hours

Cab and interior trim	Control handle
	Travel control pedal with detachable manual control lever
	Two stereo speakers
	Beverage cup holder
	Coat and hat hook
	Cleanable floor mat
	Air conditioning system
	High and low gears shift
	One-key boost mode
	Top sunroof
Safety and security configuration	Intermittent multi-gear wiper
	Cup holder/envelope
	Radio receiver
	Driving door locks and cabin locks
	Alarm horn
	Isolation plate between engine and oil pump chamber
	Rear window emergency exit
	Battery circuit breaker
	Boom and arm retaining valve
	Overheat alarm
Chassis system and shield	Safety handrails and pedals
	Anti-skid plate/anti-skid paste
	Hydraulic safety locking lever
	Emergency escape hammer
	Left and right rearview mirrors
	Bottom frame traction ring
	600 mm (24 ") three-rib track shoe

Chassis system and shield	Protective device kit: chassis bottom sealing plate, walking motor sealing plate
	single guardrail device of track
Working decive	Boom6.0m
	Arm2.96m
Lamp	Bucket 1.2m³ strengthened bucket
	Boom working lamp at left and right side
	Working lamp installed on the right side of storage box
Electrical system	Lamp inside the cab
	Battery (2×850CCA)
	70A Alternator
	7.8KW start motor
Counterweight	24V Cigar lighter
Technology	5.4t Conuterweight
	XEICS intelligent system

Optional Equipment

Configuration table of XE series hydraulic excavators	
Engine	Oil-water separator with heater (24V)
	Oil bath type air prefilter
	arm concentration
	Fuel refueling pump 50L/min
Hydraulic system	Hydraulic pipeline:quartering hammer
	Operating modes switch
	Hydraulic oil ISO VG 32, 68
	Spare valve disc
Cab and interior trim	Retractable seat belt (51 mm [2 "] wide)
	Heating and cooling storage box
	Fire extinguisher

Cab and interior trim	Explosion-proof valve of boom and arm pipeline
	Reserved switch for auxiliary equipment
	Rotating alarm light
	Counterweight reaview mirror
Chassis system and shield	Roll off protection structure(ROPS)
	Falling object protective structure (FOPS)
	600 mm (24 ") double-rib track plate
	700 mm (28 ") double-rib track plate
	800 mm (31 ") double-rib track plate
	700 mm (28 ") three-rib track plate
	800 mm (31 ") three-rib track plate
	Arm 2.5m
Working device	1.05m3 Rock bucket
	1.0m³ strengthened bucket
	1.25m3 Earthwork bucket
	Quick coupler
	Hydraulic breaker
	Travel alarm
	Camera
	5V USB interface
	Front working lamp installed on the top of cab
	Rear working lamp installed on the top of cab
	200kg vice counterweight(two for options)
	Electric self-lubrication system
	Arm concentration

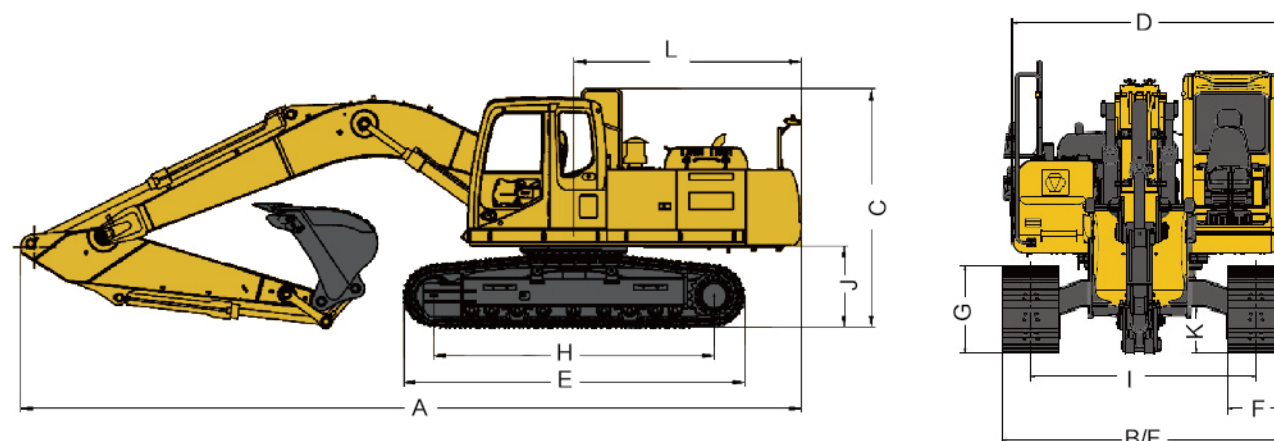
Main Specifications

Item	unit	Main specifications
Model	/	XE265C
Operation weight	Kg	25500
Bucket capacity	m³	1.05~1.25
Engine	Model	ISUZU CC-6BG1TRP-05
	Direct injection	√
	Four strokes	√
	Water cooling	√
	Turbo-charging	√
	Air to air intercooler	√
	No. of cylinders	6
	Rated power/speed	kw/rpm 135.5/2150
	Maximum torque/speed	N.m 637/1800
	Displacement	L 6.494
Main performance	Travel speed (H/L)	km/h 5.9/4.0
	Swing speed	r/min 11.3
	Gradeability	° ≤35
	Ground pressure	kPa 50.1
	Bucket digging force	kN 179
	Arm digging force	kN 125
	Maximum tractive force	kN 194
Hydraulic system	Main pump	/ Two piston pumps
	Rated flow of main pump	L/min 2×256
	Main safety valve pressure	MPa 34.3/37
	Travel system pressure	MPa 34.3
	Swing system pressure	MPa 28
	Pilot system pressure	MPa 3.9

Item	unit	Main specifications
Oil Capacity	Fuel tank capacity	L 400
	Hydraulic tank capacity	L 240
	Engine oil capacity	L 25
Standard	Length of boom	mm 6000
	Length of arm	mm 2960
	Bucket capacity	m³ 1.2
Optional	Length of boom	mm -
	Length of arm	mm 2500
	Bucket capacity	m³ 1.25(Earthwork bucket) 1.05(Rock bucket)

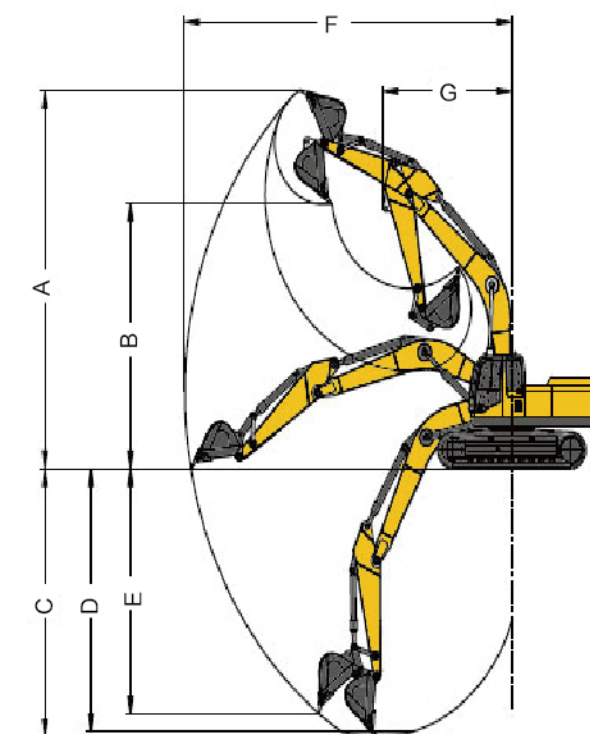
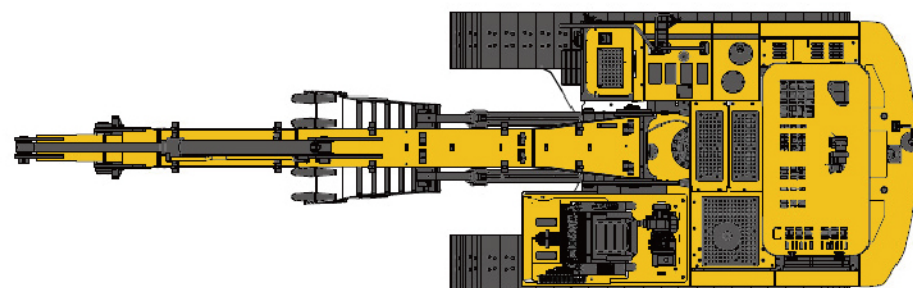
Dimensions

	Item	Unit	Parameters
Apperance size	A Overall length	mm	10160
	B Overall width	mm	3190
	C Overall height	mm	3100
	D Width of platform	mm	2830
	E Track length	mm	4640
	F Overall width of chassis	mm	3190
	G Track shoe width	mm	600
	H Wheel base of crawler	mm	3842
	I Track gauge	mm	2590
	J Counterweight clearance	mm	1100
	K Min. ground clearance	mm	485
	L Min. tail swing radius	mm	2985
	M Track height	mm	927



Working Range

	Item	Unit	Parameters
Working scope	A Max. digging height	mm	9662
	B Max. dumping height	mm	6810
	C Max. digging depth	mm	6895
	D Maximum depth cut for 2240mm(8 ft) level bottom	mm	6750
	E Max. vertical wall digging depth	mm	5480
	F Max. digging radius	mm	10240
	G Min. swing radius	mm	3850



Lifting Capacity

Lifting point height (m)	Rated lift capacity – Straight ahead (back) (kg)					Rated lift capacity – over-side (kg)				
	Lifting point radius (m)				Lifting capacity at maximum radius	Lifting point radius (m)				Lifting capacity at maximum radius
	3	4.5	6	7.5		3	4.5	6	7.5	
8.3					*5228					*5228
6			*5124	*5048	*5065			*5124	4916	4737
4.5		*6842	*5747	*5238	*5138		*6842	*5747	4809	4051
3		*8654	*6614	*5648	*5286		*8654	6372	4604	3682
1.5		*10256	*7457	*6096	*5463		8720	5947	4387	3536
Ground		*11029	*8034	*6427	*5646		8276	5648	4216	3563
-1.5	*9600	*11057	*8211	*6472	*5973	*9600	8222	5508	4138	3806
-3	*14551	*14551	*10396	*7832	*6073	*14551	8222	5528		4311
-4.5	*14550	*8761	*6308		*4596	*14550	8507	5788		5788

Capacities marked with an asterisk (*) are limited by hydraulic capacities.