



CURATED  
FACADE  
COMPANY

Brochure  
CFC GFRC



# About Us

At CFC, we don't just provide facade solutions — we build enduring partnerships that withstand the test of time, just like the way we manufacture our products: durable, sustainable, and built to last. Join us in redefining the future of architecture, where creativity and innovation merge effortlessly. Let CFC be your trusted partner in transforming visions into groundbreaking realities.







## **Low Maintenance**

Designed for longevity with minimal upkeep, our products resist wear, weather, and stains, ensuring lasting beauty with ease.

## **High Impact Resistant**

Engineered for durability, our materials withstand heavy impact, protecting structures from harsh conditions and environmental wear.

## **Non Combustible**

Built with fire safety in mind, our products meet strict fire resistance standards, providing peace of mind and enhanced protection.

## **Sustainable**

Crafted from eco-friendly materials, our solutions reduce environmental impact while delivering exceptional performance and longevity.

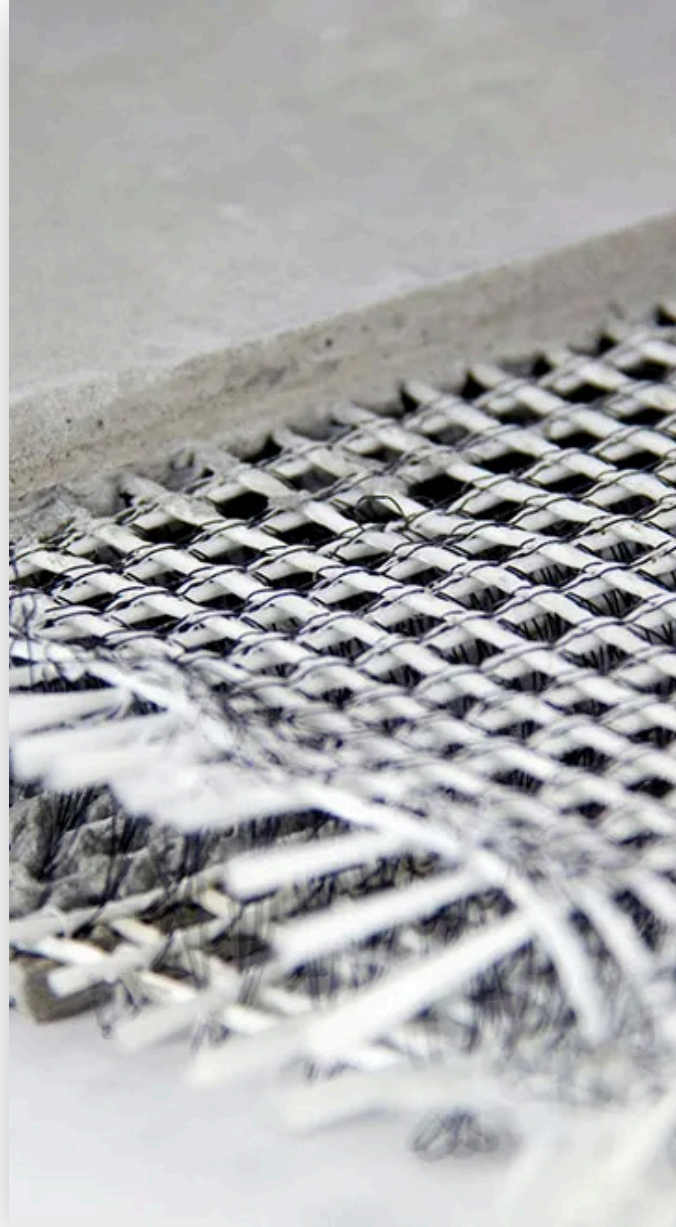
## Facade Materials

Glass Fibre Reinforced Concrete (GFRC) panels emerged in the mid-20th century as a solution for architects seeking a material that offered the strength of concrete with far less weight.

By embedding alkali-resistant glass fibers into a concrete matrix, manufacturers created a material that could achieve intricate designs while maintaining structural integrity.

Over time, innovations in mix design and casting techniques have refined GFRC into the high-performance cladding solution we see today—celebrated for its lightweight nature, flexibility in form, durability, and ability to mimic stone, wood, or custom textures.

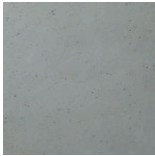
Today, GFRC panels represent a leap forward in architectural freedom and sustainability, helping shape the evolving landscape of modern facade design.







**Glacier Grey**



**Polar Mist**



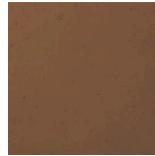
**Granite Frost**



**Shadow Rock**



**Maple Stone**



**Copper Dust**



**Autumn Clay**



**Chestnut Glow**



**Nordic Sand**



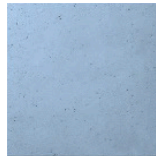
**Winter Clay**



**Arctic Wheat**



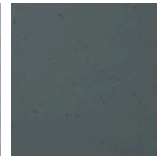
**Alpine Dune**



**Fjord Blue**



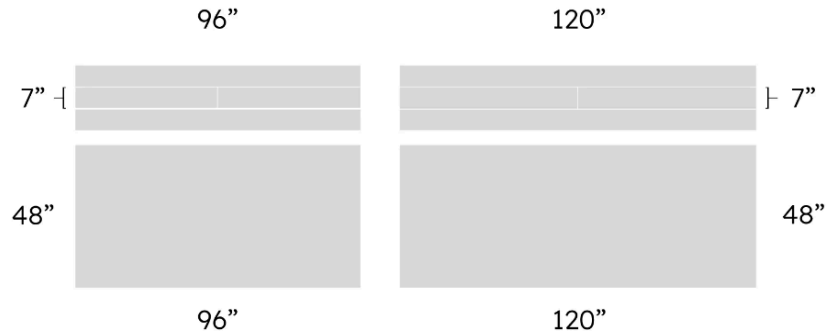
**Glacial Silver**



**Everest Shadow**



**Iceberg White**









## Creative Flexibility

CFC façade panels are available in sizes up to 1.25 x 3 meters (4' x 10'), offering remarkable versatility for a wide range of projects.

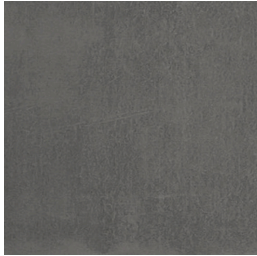
They can be easily resized, shaped, or cut using standard tools, whether in a workshop or directly on-site.

The panels are also compatible with waterjet and CNC machines, making them suitable for a variety of advanced applications.

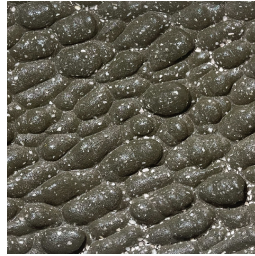
Their composition supports perforations, intricate cuts, embossing, and printing, while the through-coloured material ensures a flawless finish, even in the most detailed designs.



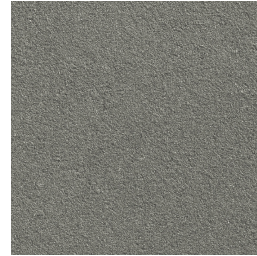




**CoreMatte™**



**StoneForm™**



**MetalSheen™**



**TerraKast™**



**MicroAggregate™**

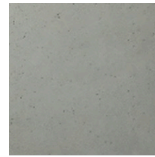


**Shaped Collection™**

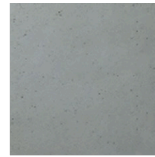
# CoreMatte™

Raw, clean, and confident. Minimalist surface with subtle sheen. Think smooth concrete with a refined edge. Available in neutral tones or bold custom pigments.

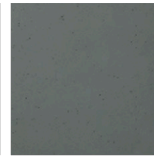
Best for: Contemporary residential, civic architecture, office towers.



**Glacier Grey**



**Polar Mist**



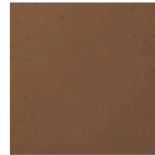
**Granite Frost**



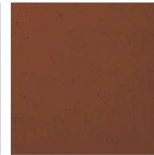
**Shadow Rock**



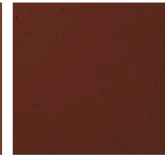
**Maple Stone**



**Copper Dust**



**Autumn Clay**



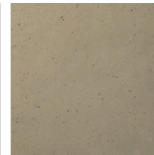
**Chestnut Glow**



**Nordic Sand**



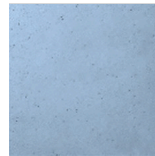
**Winter Clay**



**Arctic Wheat**



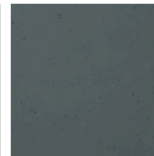
**Alpine Dune**



**Fjord Blue**



**Glacial Silver**



**Everest Shadow**



**Iceberg White**



## Mechanical Face-Fastened

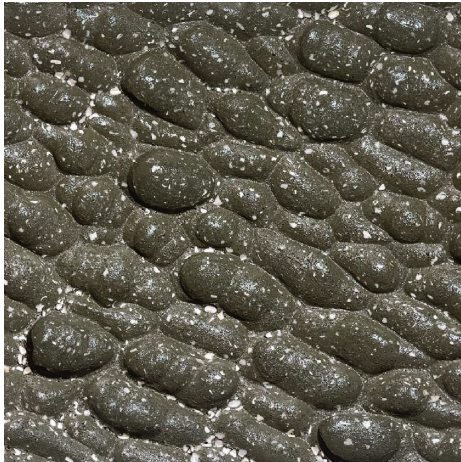
Panels are secured with visible fasteners directly through the face. This method provides maximum holding strength and ease of installation, making it ideal for industrial or utility-focused applications.



# StoneForm™

Nature-inspired. Mid-textured surface reminiscent of natural limestone or sandstone. Perfect when you want warmth and movement without the weight of stone.

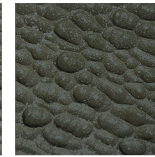
Best for: Cultural buildings, heritage-inspired designs, low-rise facades



**Glacier Grey**



**Polar Mist**



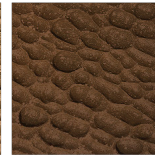
**Granite Frost**



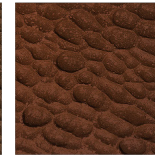
**Shadow Rock**



**Maple Stone**



**Copper Dust**



**Autumn Clay**



**Chestnut Glow**



**Nordic Sand**



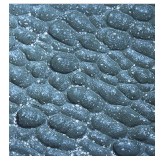
**Winter Clay**



**Arctic Wheat**



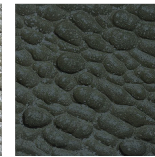
**Alpine Dune**



**Fjord Blue**



**Glacial Silver**



**Everest Shadow**

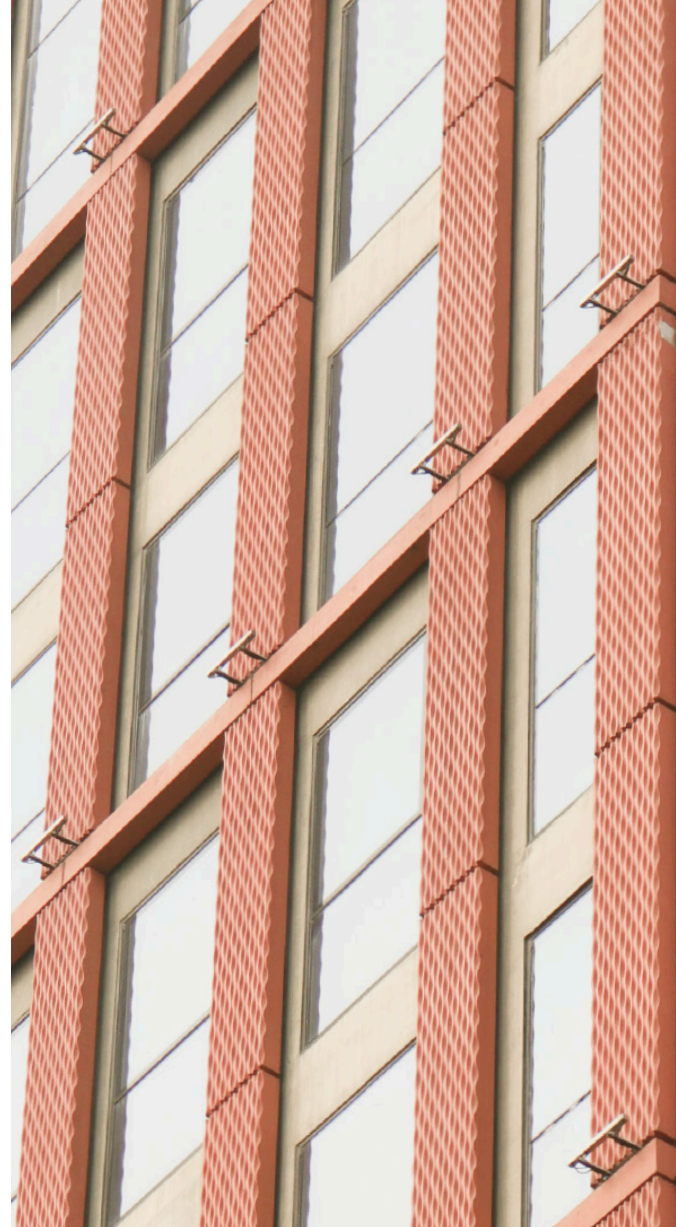


**Iceberg White**



## Concealed Clip

Utilizes hidden clips behind the panel for a clean, uninterrupted exterior finish. This option is favored in modern architectural designs where aesthetics and a sleek appearance are priorities



# MetalSheen™

Cool. Industrial. Forward. Slight shimmer finish with metallic undertones. Designed to play with light and shadow. Can simulate anodized aluminum or weathered steel.

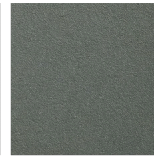
Best for: Urban infill, mixed-use podiums, storefront wraps



**Glacier Grey**



**Polar Mist**



**Granite Frost**



**Shadow Rock**



**Maple Stone**



**Copper Dust**



**Autumn Clay**



**Chestnut Glow**



**Nordic Sand**



**Winter Clay**



**Arctic Wheat**



**Alpine Dune**



**Fjord Blue**



**Glacial Silver**



**Everest Shadow**



**Iceberg White**

## Installation Features

We specialize in cladding that doesn't complicate.  
Features of CFC GRC during installation include:

- Pre-drilled panels (on request)
- Field-modifiable with no edge chipping
- Open-joint rainscreen ready
- Compatible with leading bracket systems
- 25mm drainage cavity standard
- Designed for thermal clip systems

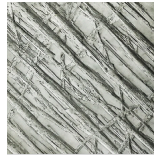




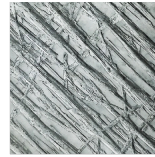
# TerraKast™

Grain, texture, and tactility. Low-profile textures mimicking wood, board-form concrete, or earth-pressed materials. Textured to touch, engineered to last.

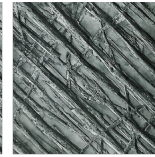
Best for: Interiors, retail environments, natural-themed architecture.



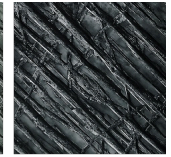
**Glacier Grey**



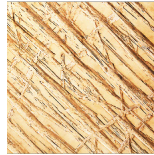
**Polar Mist**



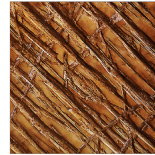
**Granite Frost**



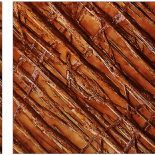
**Shadow Rock**



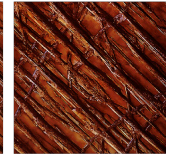
**Maple Stone**



**Copper Dust**



**Autumn Clay**



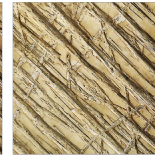
**Chestnut Glow**



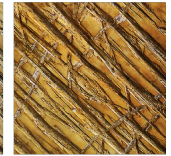
**Nordic Sand**



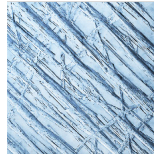
**Winter Clay**



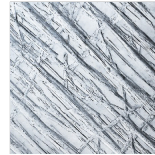
**Arctic Wheat**



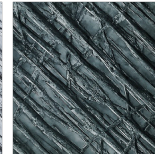
**Alpine Dune**



**Fjord Blue**



**Glacial Silver**



**Everest Shadow**



**Iceberg White**

# Substrate Compatibility

## Steel Stud

Compatible with steel stud framing commonly used in commercial interiors. Ideal for lightweight cladding, signage, or panel systems that require precise anchoring.

## CMU

Compatible with concrete masonry units (CMU), offering strong adhesion for exterior cladding, insulation panels, and other heavy-duty applications.

## Plywood Sheathing

Works well with plywood substrates used in residential and commercial builds. Provides a secure base for panel systems, facades, and weatherproofing layers.

## Concrete

Designed for compatibility with poured or precast concrete surfaces. Suitable for structural and architectural applications requiring durable, long-lasting performance.





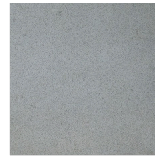
# MicroAggregate™

Detail up close. Clean from afar. Surface embedded with fine quartz aggregate. Matte, anti-glare, and highly durable. Available in single-tone or speckled mineral blends.

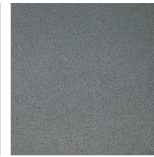
Best for: Educational campuses, long-span elevations, overhangs.



**Glacier Grey**



**Polar Mist**



**Granite Frost**



**Shadow Rock**



**Maple Stone**



**Copper Dust**



**Autumn Clay**



**Chestnut Glow**



**Nordic Sand**



**Winter Clay**



**Arctic Wheat**



**Alpine Dune**



**Fjord Blue**



**Glacial Silver**



**Everest Shadow**



**Iceberg White**



# Code Compliance & Testing

## Fire Rating

Non-combustible per CAN/ULC-S114

Flame Spread Index: 20

Smoke Developed Classification: 35

Complies with CAN/ULC-S102

## Wind Load Performance

Successfully tested at static wind pressure of 2000 Pa

No deflection or detachment under simulated extreme wind

## Water Penetration

No leakage observed at 700 Pa static pressure

Seamless integration with rainscreen assemblies

## Thermal Conductivity

Panel core: 0.115 W/m·K

Outer layer: 0.185 W/m·K

Suitable for energy-efficient wall systems

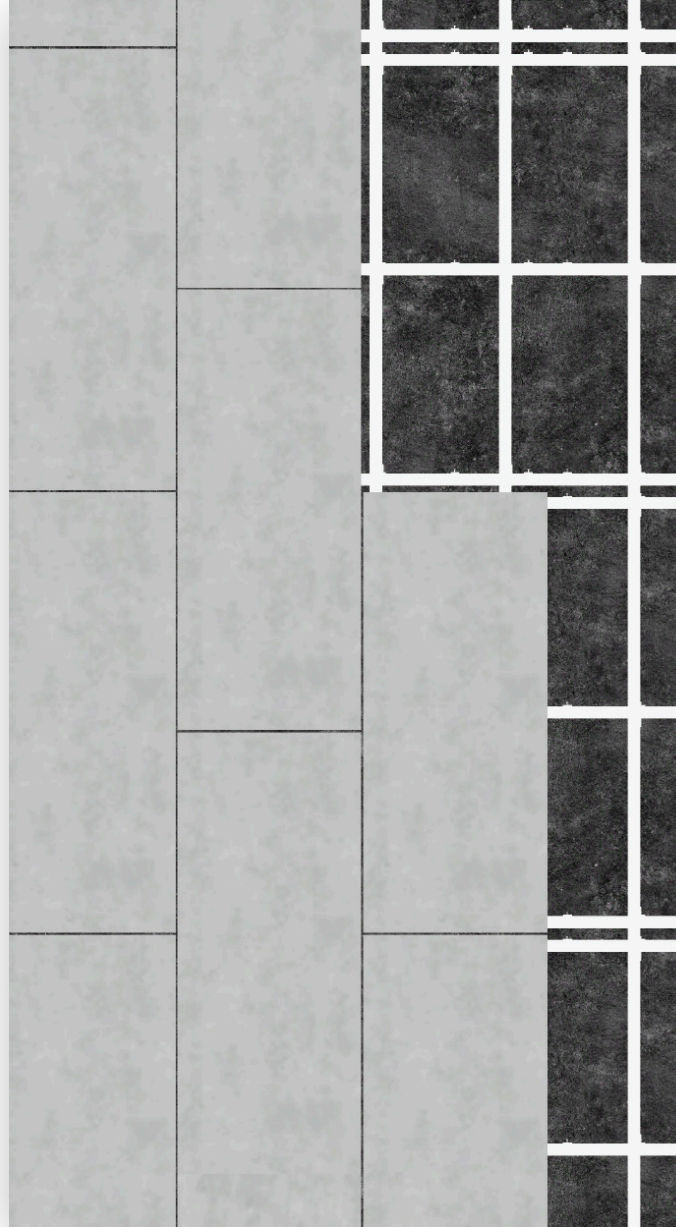
## Freeze/Thaw Durability

Passed 60+ cycle freeze/thaw testing without degradation

Ideal for all Canadian and northern U.S. climates

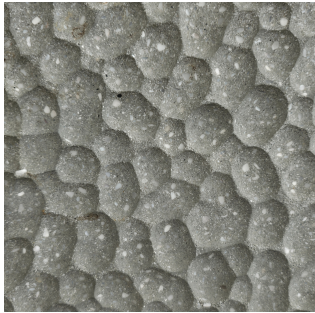
## Impact Resistance

Designed to withstand typical on-site abuse and post-install impacts. Tested for heavy object and concentrated point impact.



# Shaped Collection™

Allows for sculptural expression and durable performance. Precision-cast for fine detail and dimensional depth. Available in various profiles, textures, colors. For signature façades, creative cladding, interior accents, bespoke features.





KISS of the SEA

SUN GROUP

EC42  
think



## Brochure

CFC GFRC - Glass Fibre Reinforced Concrete



Phone  
+1 (604) 690-4289

Email  
[info@curatedfacade.com](mailto:info@curatedfacade.com)