

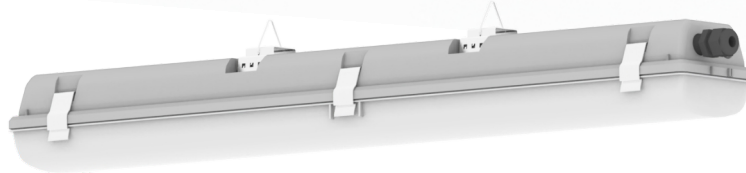
HardLux



HardLux-70



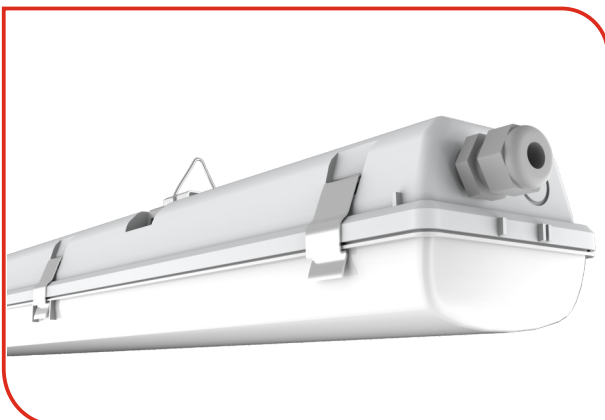
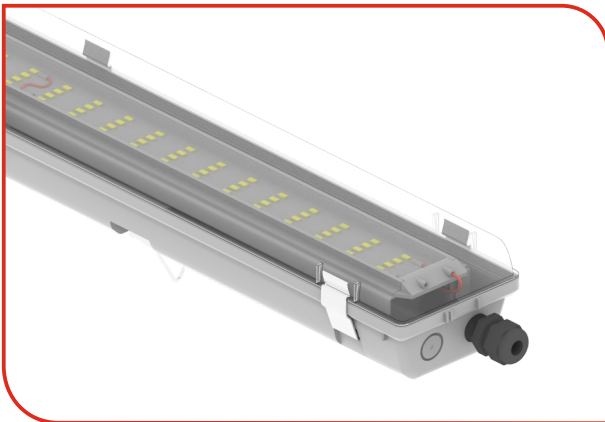
HardLux-55



HardLux-20

Explosion-proof LED luminaires are designed for general lighting in a wide range of industries, including oil and gas facilities, oil refining, gas, chemical, cement, woodworking, food production, and others. They meet explosion protection labeling requirements and are suitable for hazardous areas classified as zones 1 and 2, as well as fire-hazardous zones of classes P-I and P-II.

These luminaires are also suitable for use in zones 21 and 22. They are designed for direct installation on building structures, such as walls, ceilings, foundations, floors, columns, or trusses.



Housing: Made of fire-resistant polycarbonate.

Diffuser: Constructed from refractory, matte, and light-stabilized polycarbonate.

Side locks: Manufactured from spring stainless steel and sheet steel.

Cable Entries Available in configurations of 1 or 2 pieces.



Light source: Equipped with Osram LEDs (Germany), sealed with a light-stabilized, chemical-resistant compound by COLOR-DEC (Italy).

Power supply: Supplied by HADLER (Germany), housed in an explosion-proof aluminum enclosure and sealed with a hemical-resistant COLOR-DEC compound (Italy).

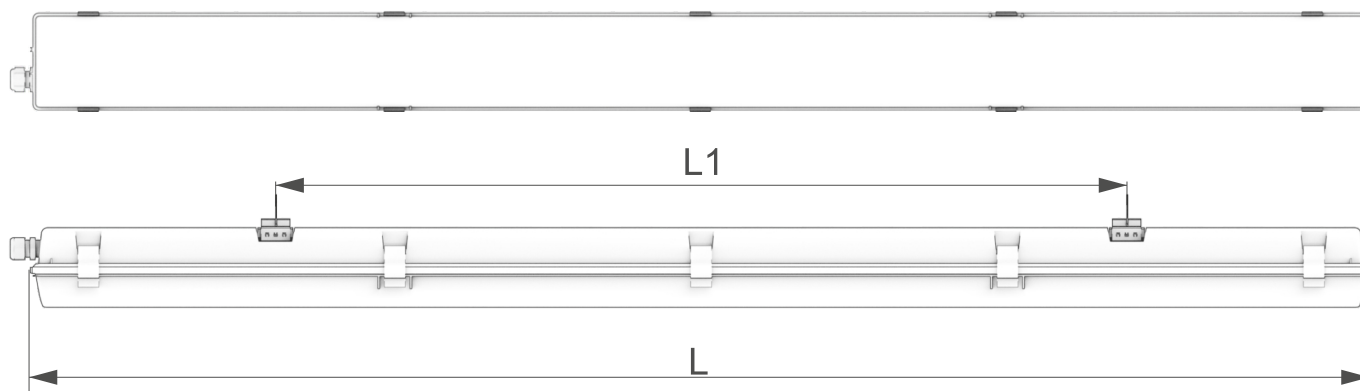
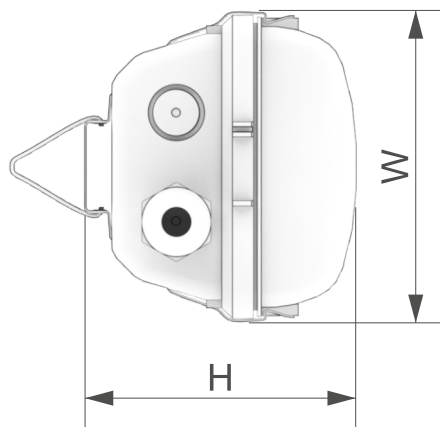
Package Contents: Includes the luminaire with an integrated LED light source.

Features:

- Operating range of AC voltage: 198-264 V AC, 176-275 V DC;
- Impact Resistance of Housing: IK10 (20 J).
- Optical Cover Features: Designed with high-precision optical characteristics, UV-resistant, and offering a light transmittance of over 90%, ensuring optimal performance with LED modules
- Light Source: High-efficiency LEDs with a rated lifespan of over 50,000 hours, classified as energy efficiency class A++, providing stable luminous flux with instant ignition and re-ignition.
- Voltage and Switching Tolerance: Resistant to voltage fluctuations and frequent on/off cycles.
- Environmental Compatibility: Eco-friendly design without the need for special disposal methods.
- Components: Manufactured using premium-grade electronic components and LEDs from world-leading manufacturers.
- Ingress Protection: High protection level against dust and moisture (IP rating), fire-resistant, and weatherproof.

Model	HardLux-2xXXX-0B0		
Operating Voltage (V)	220 - 240		
Power Factor (PFC)	> 0,95		
Operating Temperature (°C)	from -40 to +40		
Correlated Color Temperature (CCT, K)	4000		
Ingress Protection (IP)	IP 65		
Impact Resistance (IK)	IK10/20 J		
Mechanical Stability	M1		
Rated Power (W)	20	55	70
Luminous Flux (lm)	2380	6545	8330
Luminous Efficacy (lm/W)	120		
Beam Angles (°)	120		
Fire Hazard Zone Class	P-I, P-II		
Electrical Protection Class	I		
Explosion Protection Marking	 II 2G Ex db eb mb op is IIC T5 Gb II 2D Ex tb op is IIIC T80°C Db	 II 2G Ex db eb mb op is IIC T6 Gb II 2D Ex tb op is IIIC T80°C Db	
Weight (kg)	2,6	4,2	5,1
Dimensions (LxWxH, mm)	600x116x100	1200x116x100	1500x116x100
Mounting Length (L1, mm)	360	700	1000
Ordering Example HardLux-2xXXX-0B0: Model Code Breakdown			
Device Dimensions: - 600 mm - 1200 mm - 1500 mm		Connection: 1 - individually 2 - itransit	

Lamp Sketch:



HardLux-2xXXX-0B0