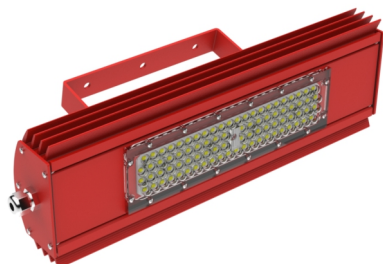


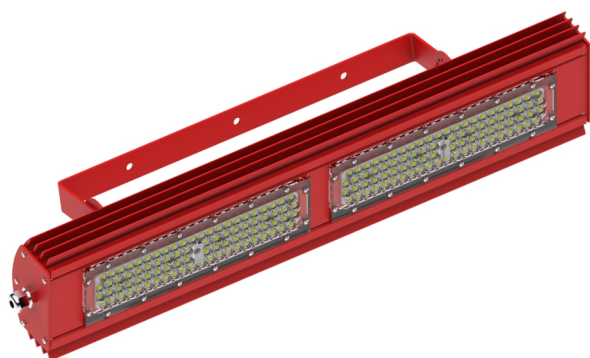
SolidMax



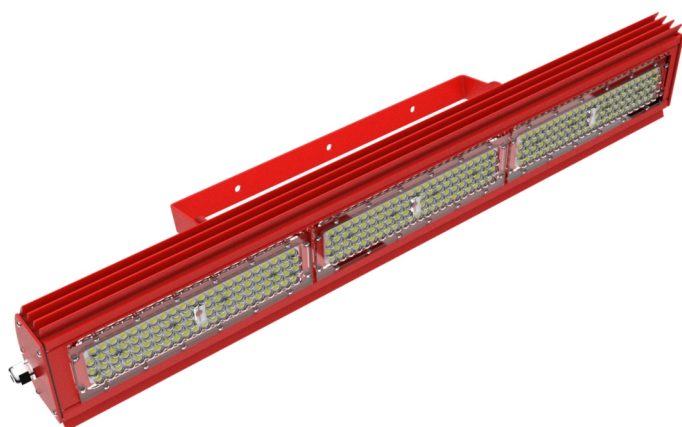
SolidMax-30-ABC

Explosion-proof LED luminaire designed for general lighting in oil and gas facilities, oil refining, gas, chemical, cement, woodworking, food, and other industries. Compliant with explosion protection marking for hazardous areas of Class 2 and fire-hazardous areas of Classes P-I and P-II. Suitable for use in Zone 22.

The luminaire is intended for direct mounting on building structures, such as walls, ceilings, foundations, floors, columns, or trusses, in environments without sources of shock located in the same room.



SolidMax-60-ABC



SolidMax-80-ABC

Housing: Extruded aluminum profile with powder coating.

Side Covers: Aluminum alloy.

Adjustable Bracket Rolled steel with a thickness of 3 mm.

Diffuser: Fireproof, light-stabilized polycarbonate lens.

Sealing: Rubber.

Cable Entry: 1 pc.


Light Source: Samsung LEDs (South Korea).

Power Supply: HADLER (Germany).

Package Contents: Luminaire with integrated LED light source.

Features:

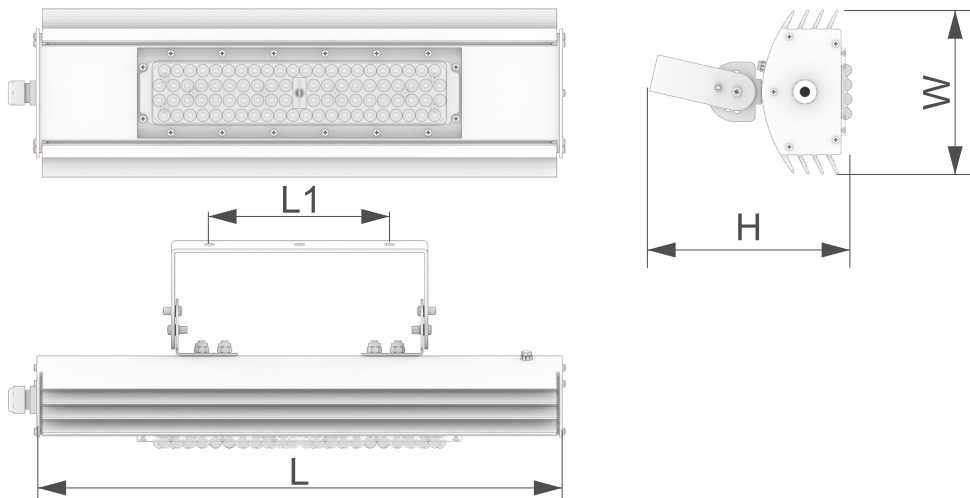
- Operating Voltage Range: 198–264 V AC, 176–275 V DC.
- Resistance to Housing Impact: IK10 (20 J).
- Cable Entries: EJ and BJ models are certified in accordance with the requirements of the ATEX Directive.
- Light Source: Energy-saving LEDs with a lifespan of over 100,000 hours, classified as energy efficiency class A++, providing a stable luminous flux with instant ignition and re-ignition.
- Performance: Resistant to voltage surges and frequent switching cycles.
- Environmental Safety: Eco-friendly design that does not require special disposal.
- Components Quality: Electronic components and LEDs are sourced exclusively from world-leading manufacturers.
- Protection Level: High degree of dust and moisture protection, fireproof, and weatherproof.

Model	SolidMax-30-ABC	SolidMax-60-ABC	SolidMax-80-ABC
Operating Voltage (V)	220-240		
Power Factor (PFC)	> 0,95		
Color rendering index (CRI)	> 80		
Operating Temperature (°C)	from -35 to +50		
Correlated Color Temperature (CCT, K)	4000		
Ingress Protection (IP)	IP65		
Impact Resistance (IK)	IR10/20 J		
Mechanical Stability	M1		
Rated Power (W)	30	60	80
Luminous Flux (lm)	4500	9000	12000
Luminous Efficacy (lm/W)	150		
Beam Angles (°)	15, 40, 60, 90		
Light source	Samsung (South Korea)		
Power supply	HADLER (Germany)		
Lens	LEDiL (Finland)		
Fire Hazard Zone Class	P - 2		
Electrical Protection Class	I		
Explosion Protection Marking	 II 3G Ex ec IIC T6 Gc II 3D Ex tc IIIC T80°C Dc		
Weight (kg)	2,4	3,6	4,8
Dimensions (LxWxH, mm)	400x130x150	600x130x150	800x130x150
Mounting Length (L1, mm)	140	240	240

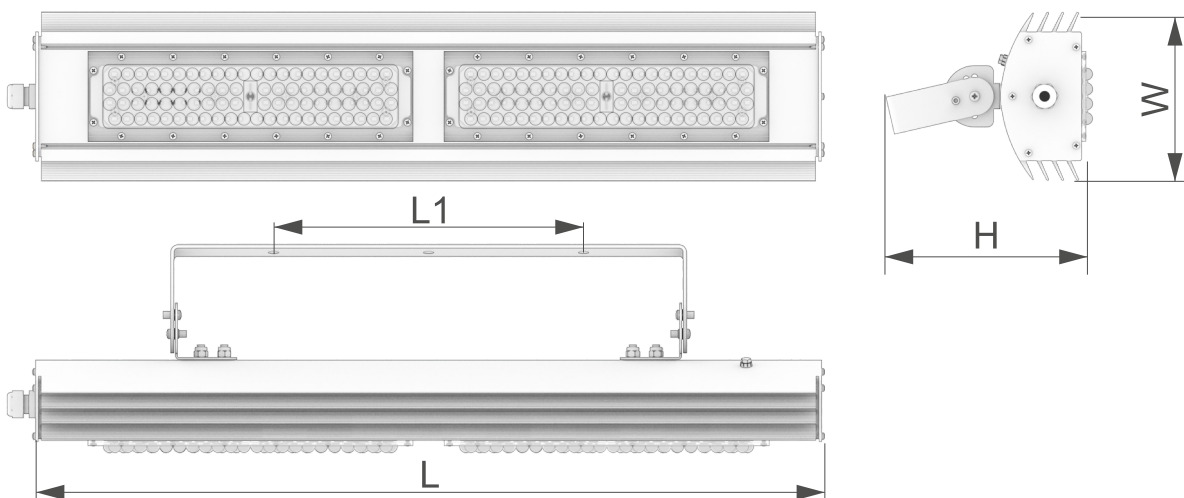
Ordering Example **SolidMax-XX-ABC:** Model Code Breakdown

XX - Power:	A - Beam angle:	B - Connection:	C - Options:
30 W	1 - 15°	1 – Individual	0 - None
60 W	2 - 40°		1 - Backup
80 W	3 - 60°		
80 BT	4 - 90°		

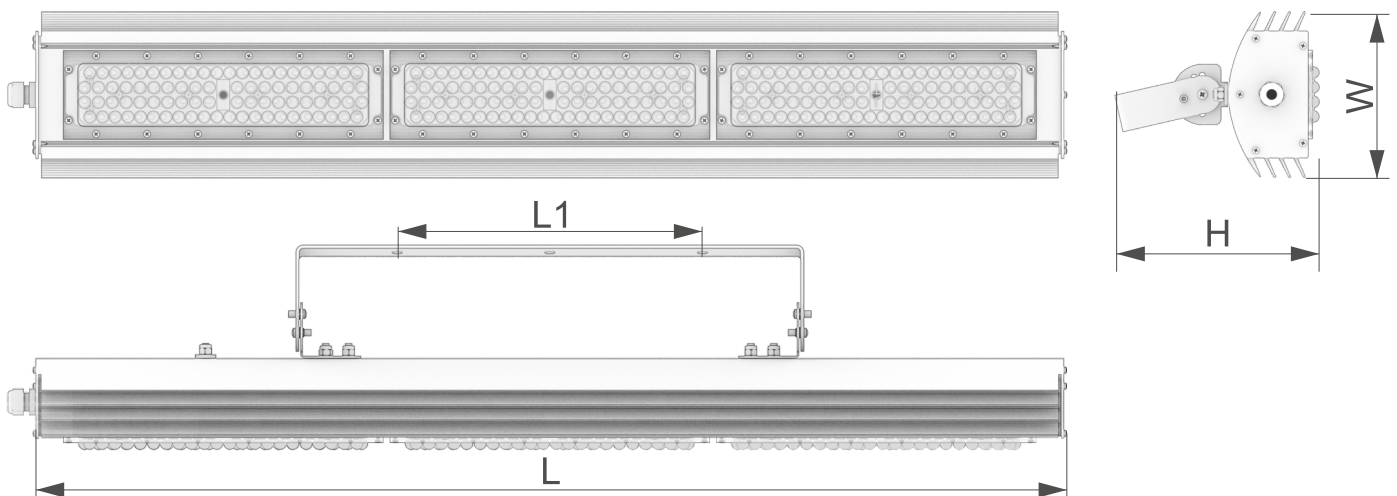
Lamp Sketch



SolidMax-30-ABC



SolidMax-60-ABC



SolidMax-80-ABC