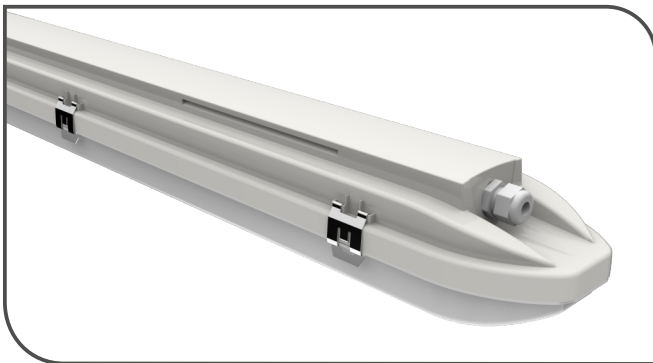


Solid



Solid-40
Solid-50

LED luminaire designed for general lighting in industrial, commercial, administrative, warehouse, agricultural, auxiliary, and other premises, including housing and public utilities.



Housing: Impact-resistant, self-extinguishing polycarbonate.

Diffuser: Light-stabilized polycarbonate.

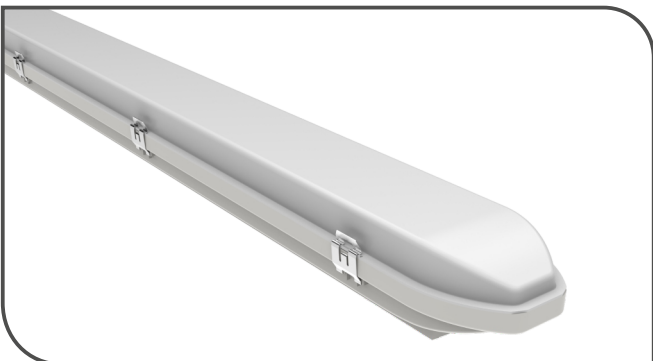
Side Locks: Spring-loaded stainless steel sheet.

Cable Entries: Configurations available with 1 or 2 cable glands.

Light Source: Samsung LEDs (South Korea).

Power Supply: Built-in EAGLERISE power supply (China).

Package Contents: Luminaire with integrated LED light source.



Features:

- Light-Transmitting Protective Element: Designed with advanced optical characteristics, resistant to UV radiation, and offering an extremely high transmittance of over 90%, ideal for luminaires equipped with LED modules.
- Light Source: Energy-saving LEDs with a lifespan exceeding 50,000 hours, classified as energy efficiency class A++, providing a stable luminous flux with instant ignition and re-ignition.
- Performance: Resistant to voltage surges and frequent switching cycles.
- Environmental Safety: Eco-friendly design that does not require special disposal.
- Components Quality: Electronic components and LEDs are sourced exclusively from world-leading manufacturers.
- Durability: Smooth switching, along with protection against overheating and burnout, significantly extends the lifespan of LEDs.
- Protection Level: Fireproof, weatherproof, and featuring high mechanical strength.

Model	Solid-40	Solid-50
Operating Voltage (V)	220 AC	
Power Factor (PFC)	0,95	
Color rendering index (CRI)	80	
Operating Temperature (°C)	from -30 to +50	
Correlated Color Temperature (CCT, K)	4000	
Ingress Protection (IP)	IP65	
Impact Resistance (IK)	IR10/20 J	
Mechanical Stability	M1	
Rated Power (W)	40	50
Luminous Flux (lm)	5600	7000
Luminous Efficacy (lm/W)	140	
Beam Angles (°)	120	
Weight (kg)	1,2	1,5
Dimensions (LxWxH, mm)	1200x102x80	1500x102x80
Mounting Length (L1, mm)	550-850	850-1140

INSTALLATION: On a support surface or mounting profile with screws, threaded rods, screws or bolts.

ELECTRICAL CONNECTION: individual cable 6...9 mm (core cross-section 1.5...2.5 mm²).

Lamp Sketch

