

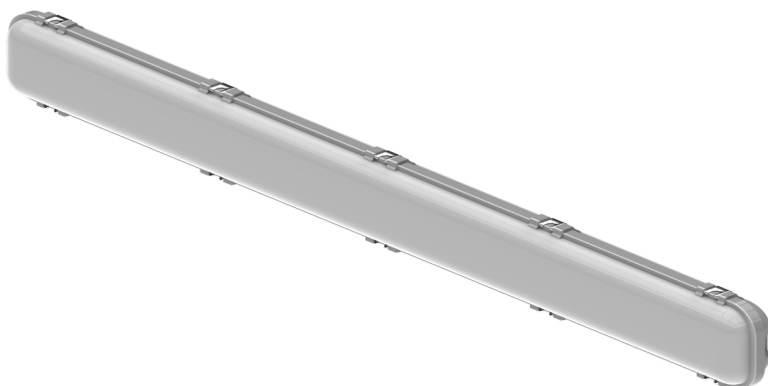
WATERPROOF

The luminaire is designed for general lighting in:

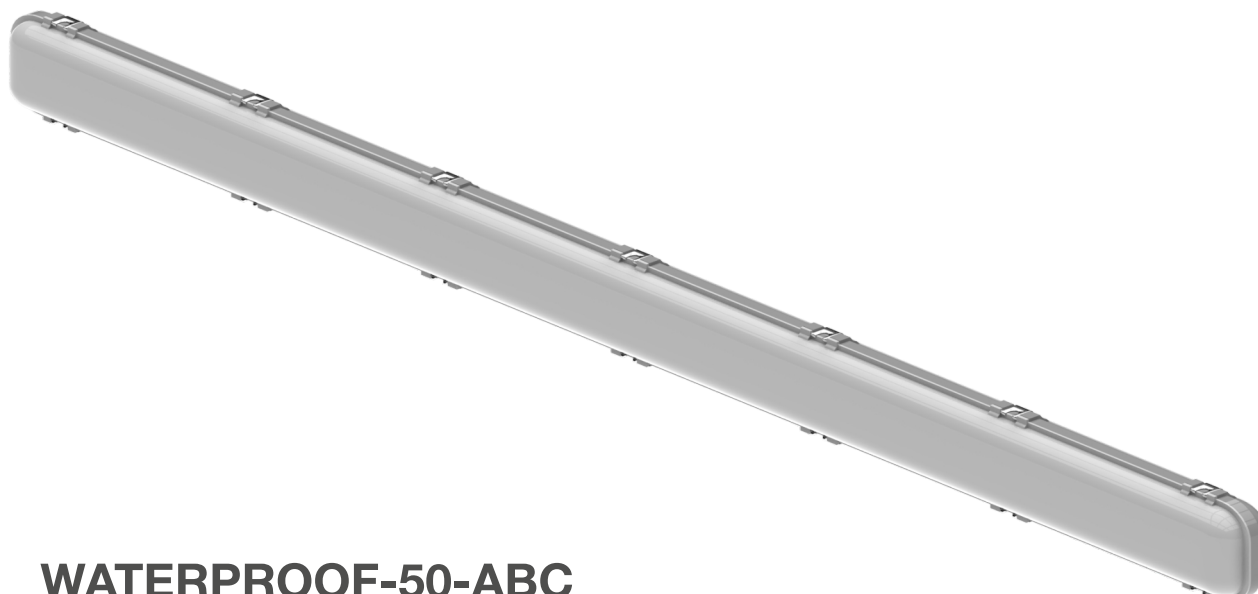
- Production facilities
- Commercial areas
- Administrative buildings
- Warehouses
- Agricultural facilities
- Auxiliary premises
- Other types of spaces



WATERPROOF-20-ABC



WATERPROOF-40-ABC



WATERPROOF-50-ABC

Housing: Monolithic, impact-resistant, self-extinguishing polycarbonate.

Diffuser: Matte, monolithic, self-extinguishing polycarbonate.

Side Locks: Spring-loaded stainless steel sheet.

Cable Entries: : Available with 1 or 2 cable glands.

Light Source: LEDs.

Power Supply: Built-in power supply.

Package Contents: Luminaire with integrated LED light source.

Features:

- Resistance to Housing Impact: IK08 (5 J).
- Emergency Power Supply (EPU): Optionally equipped with an emergency power supply unit, providing up to 1 hour of operation in emergency mode (3 W).
- Light Source: Energy-efficient LEDs, classified as energy efficiency class A++.
- Components Quality: Electronic components and LEDs sourced exclusively from world-leading manufacturers.
- Cable Entries: Two cable glands for transit (trunk) electrical connection to the line.
- Protection Level: High degree of dust and moisture protection, anti-vandal, and weatherproof.

Model	WATERPROOF-20-ABC	WATERPROOF-40-ABC	WATERPROOF-50-ABC
Operating Voltage (V)	220 AC		
Power Factor (PFC)	> 0,95		
Color Rendering index (CRI)	≥ 80		
Operating Temperature (°C)	from -30 to +40		
Correlated Color Temperature (CCT, K)	4000		
Ingress Protection (IP)	IP65		
Impact Resistance (IK)	IK08/5 J		
Mechanical Stability	M1		
Rated Power (W)	20	40	50
Luminous Flux (lm)	2400	4800	6000
Beam Angles (°)	120		
Luminous Efficacy (lm/W)	120		
Electrical Protection Class	I		
Weight (kg)	0,9	1,2	1,5
Dimensions (LxWxH, mm)	600x90x70	1200x90x70	1500x90x70
Mounting Length (L1, mm)	250	550	1150

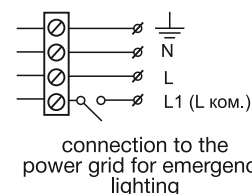
Ordering Example WATERPROOF-XX-ABC Model Code Breakdown

XX - Power: 20 W 40 W 50 W	A - Class of electrical protection: 3 -electrical protection class I	B - Method of electrical connection: 1 - Individual 2 - Transit (to the main line)	C - Emergency power supply: 0 - without emergency lighting device 1 - Emergency lighting device with battery pack
--	--	---	--

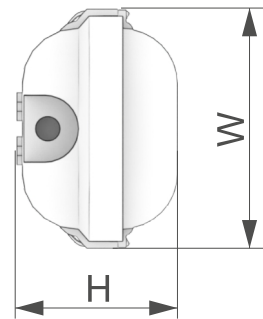
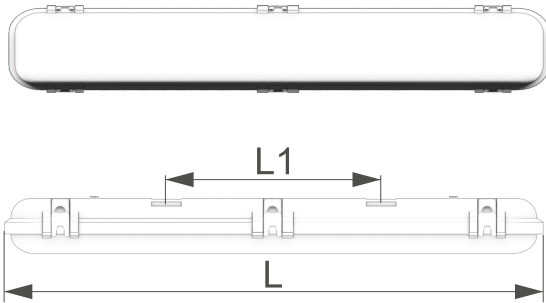
INSTALLATION: On a support surface or mounting profile with screws, threaded rods, screws or bolts.

ELECTRICAL CONNECTION: individual cable 6...9 mm (core cross-section 1.5...2.5 mm).

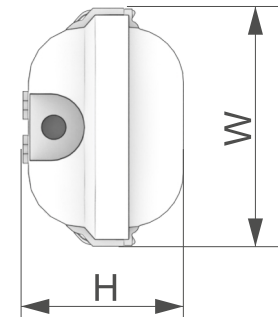
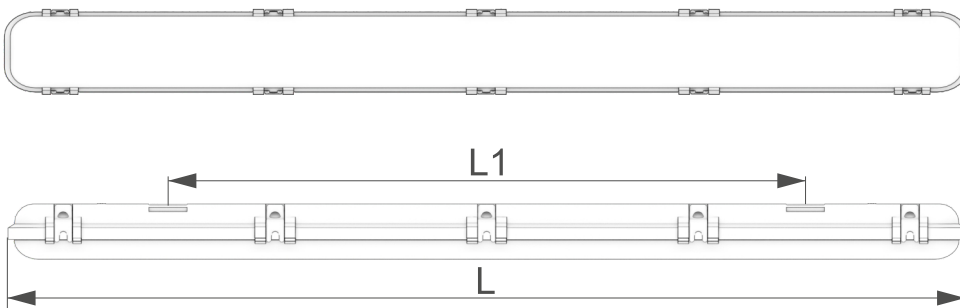
2



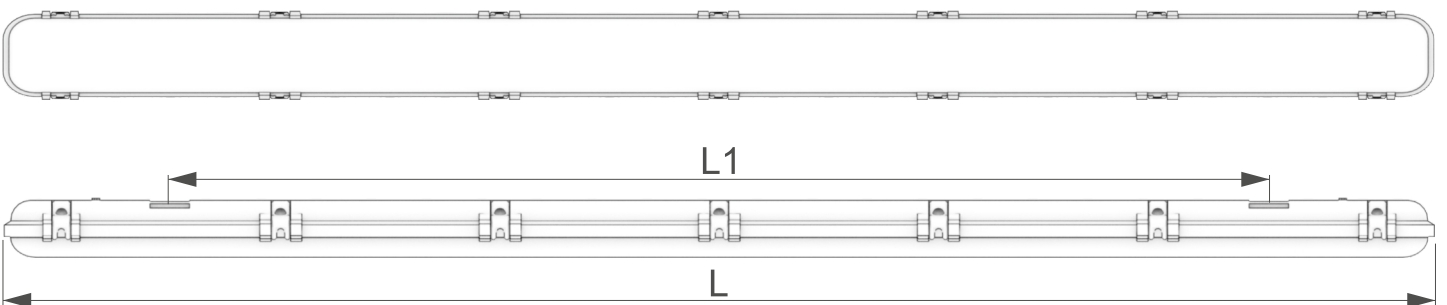
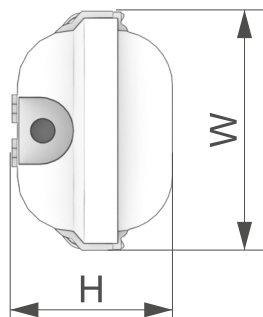
Lamp Sketch



WATERPROOF-20-ABC



WATERPROOF-40-ABC



WATERPROOF-50-ABC