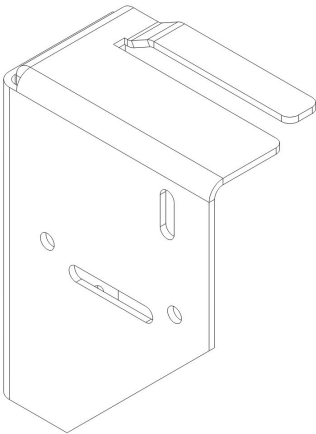


ThermaKlip

Adjustable Thermal Wall Bracket

Features and Benefits

The ThermaKlip stainless steel thermal bracket is a cutting-edge solution for high-performance cladding wall assemblies. Designed with precision and crafted from durable 14-gauge stainless steel, this versatile bracket minimizes thermal bridging, enhances energy efficiency, and supports a sleek, modern façade. With sizes tailored to accommodate insulation from 2" to 8", it seamlessly adapts to your project's unique requirements. Its superior strength allows for fewer brackets per wall, reducing material costs and installation time, while maintaining exceptional structural integrity. Elevate your building's performance with a thermal bracket that combines innovation, efficiency, and reliability.



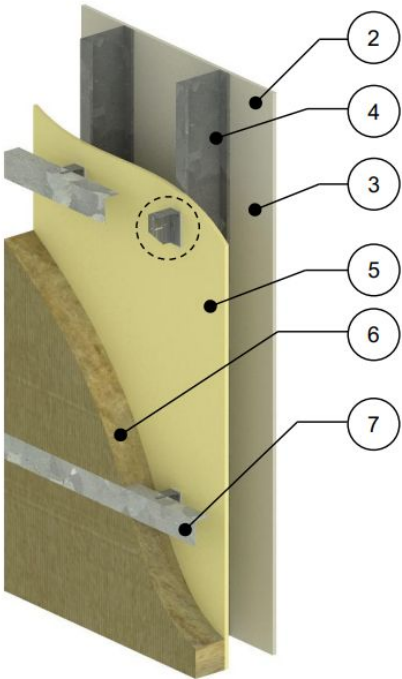
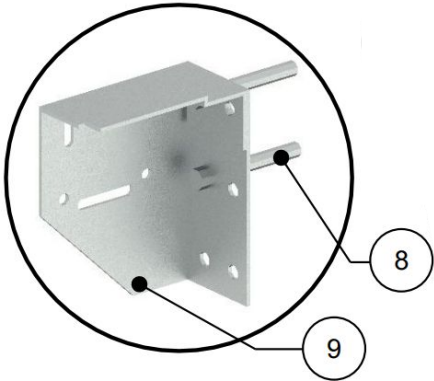
Enhanced Energy Efficiency: By minimizing thermal bridging, the brackets contribute to improved insulation performance, leading to better energy efficiency and occupant comfort.

Cost Savings: The ability to use fewer brackets without compromising structural integrity can result in lower material and labor costs.

Versatility: Compatibility with various insulation thicknesses and substrates, including concrete, steel studs, and wood, makes these brackets suitable for a wide range of applications.

Ease of Installation: The design accommodates both vertical and horizontal sub-girts without the need for shims, streamlining the installation process and reducing time on site.

Stainless Steel Clip



ID	Component	Thickness Inches (mm)	Conductivity Btu-in / ft ² ·hr·°F (W/m K)	Nominal Resistance hr·ft ² ·°F/Btu (m ² K/W)	Density lb/ft ³ (kg/m ³)	Specific Heat Btu/lb·°F (J/kg K)
1	Interior Film ¹	-	-	R-0.7 (0.12 RSI)	-	-
2	Gypsum Board	1/2" (12.7)	1.1 (0.16)	R-0.5 (0.08 RSI)	50 (800)	0.26 (1090)
3	Air in Stud Cavity	6" (152)	-	R-0.91 (0.16 RSI)	0.075 (1.2)	0.24 (1000)
4	6" x 1 5/8" Steel Studs	18 Gauge	360 (52)	-	489 (7830)	0.12 (500)
5	Exterior Sheathing	1/2" (12.7)	1.1 (0.16)	R-0.5 (0.08 RSI)	50 (800)	0.26 (1090)
6	Exterior Mineral Wool Insulation	4", 6" (102, 152)	0.23 (0.034)	R-17.2 (3.03 RSI), R-25.8 (4.54 RSI)	4 (64)	0.20 (850)
7	Steel L-Shaped Girt	18 Gauge	360 (52)	-	489 (7830)	0.12 (500)
8	#14 Stainless-Steel Fasteners	1/4" (6.5) Ø	118 (17)	-	500 (8000)	0.12 (500)
9	ThermaKlip – Stainless Steel	14 Gauge	118 (17)	-	500 (8000)	0.12 (500)