

# R210 **SMART PLUS**

**OPERATING WEIGHT: 21200 kgs**

**GROSS POWER : 140 HP @ 2000 rpm**

**BUCKET CAPACITY: 0.87 - 0.92m<sup>3</sup>**



# R210 **SMART** *PLUS*

## BEST-IN CLASS PERFORMANCE

- Advanced CAPO system
- Hydraulic flow summation
- Swing priority
- Regeneration system
- Excellent digging forces



## OPERATOR COMFORT

- Spacious cabin
- Fully adjustable seat
- Enhanced visibility
- User friendly functionality

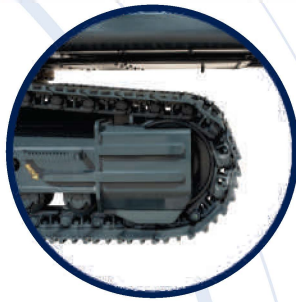


## IMPROVED FUEL EFFICIENCY

- New ECO mode
- Fuel saving kit
- Electro hydraulic system
- Auto deceleration system
- Efficient breaker mode



## DESIGNED FOR SMART WORK



### INCREASED MACHINE DURABILITY

- Strengthened undercarriage
- Proven upper structure
- Forged ring body
- Reinforced front attachment



### SIMPLIFIED MAINTENANCE

- Easy serviceability
- Extended maintenance
- Large capacity fluid tank
- Low life cycle cost



### PARTS & SUPPORT

- Hyundai genuine parts
- Max parts availability
- On-site product support
- Remote Management System (Hi-Track)



## PRIDE AT WORK

Hyundai construction equipment strives to build state-of-the-art earthmoving equipment to give every operator maximum performance, more precision, versatile machine preferences, and proven quality.

New technologies designed to improve performance and precision, make the Hyundai excavator smooth, fast and easy to control.

Take pride in your work with Hyundai!

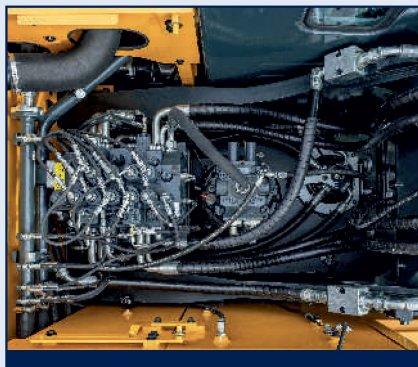
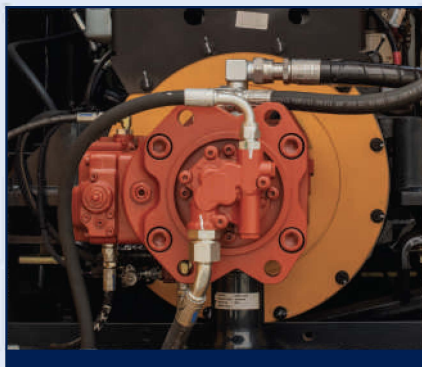


## ENGINE

The water cooled, 4 cycle diesel, 6 cylinder in line, direct injection turbocharged engine is built for power, reliability, efficiency.

The engine is manufactured to perform in wide range of heat, humidity and dust conditions without compromising productivity.





## HYDRAULIC SYSTEM

Electro hydraulic control system provides wide range of flow at various workloads for paramount productivity. Open center design of Main Control Valve (MCV) ensures fast response and maximum efficiency in tough conditions.

## CHOICE OF OPERATING MODE

Working Mode	Advantage
<b>P Mode</b>	<ul style="list-style-type: none"> <li>• Maximum Power</li> <li>• Fast Cycle time</li> </ul>
<b>S Mode</b>	<ul style="list-style-type: none"> <li>• Balance between power and fuel efficiency</li> </ul>
<b>Eco Mode</b>	<ul style="list-style-type: none"> <li>• Better fuel efficiency</li> </ul>
<b>Breaker Mode</b>	<ul style="list-style-type: none"> <li>• Sets pump flow to optimal level and boosts efficiency</li> </ul>

## BEST IN CLASS DIGGING FORCES

Higher output even in tough working conditions

- **Bucket - 15600 kgf**
- **Arm - 12500 kgf**



## BEST IN CLASS TRAVEL PERFORMANCE

- Higher traction force
- Dual travel option
- High maneuverability

**Traction Force : 21100 kgf**

## EFFICIENT COMBINED OPERATION

Inbuild flow summation system and **swing priority** function leads to faster swing cycle results in excellent output



## IMPROVED FUEL EFFICIENCY

Advanced CAPO system, newly designed CMCU, power & working mode options results in excellent fuel efficiency.

## FUEL SAVING KIT

- Monitor undue load and cut down losses.
- Provides better fuel efficiency



## NEGATIVE FLOW CONTROL

Optimum balance between pump and engine output for better fuel efficiency



## ONE TOUCH IDLE & AUTO DECELERATION

Prevents fuel losses by reducing engine rpm during no-load condition

## EXCLUSIVE BREAKER MODE

Excellent fuel saving due to exclusive power for breaker operation



## ARM REGENERATION SYSTEM

- Smooth operation
- Prevent cavitation
- Increased performance & fuel efficiency





## OPERATOR DELIGHT

More space, better visibility, powerful air-conditioning and adjustable fully suspension seat, easy to access controls ensure that the operator can work for longer hours without stress or fatigue in the comfortable and safe working environment.



## SPACIOUS CABIN

More head room, large space, large door for easy entry and exit

## OPERATOR SEAT

Easily adjustable fully suspension seat with adjustable arm rest



360 degree visibility, fully open sunroof, added side lamp & mirror ensure comfortable, safe working environment.

## INSTRUMENT PANEL

The user-friendly multi language option cluster making it easy to check all critical systems like

- Hydraulic oil temperature,
- Coolant temperature
- Fuel level
- Self diagnostic checks
- Maintenance management

to optimizing productivity needs ensuring fuel efficiency



SUN VISOR (OPTIONAL)



New!

- AC Front Vent
- Hour Meter
- 24V Socket



New!

## AIR CONDITIONER

- High performance air conditioner
- Improved AC ducting
- Water bottle cooling system



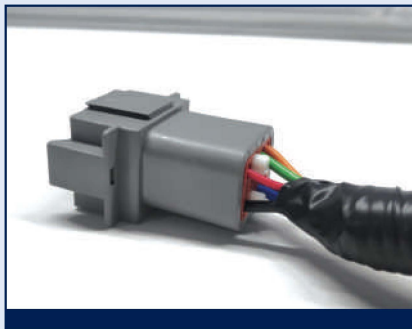
## REINFORCED FRONT STRUCTURE

Use of specialized advance steel plates and reinforced design for higher strength and durability



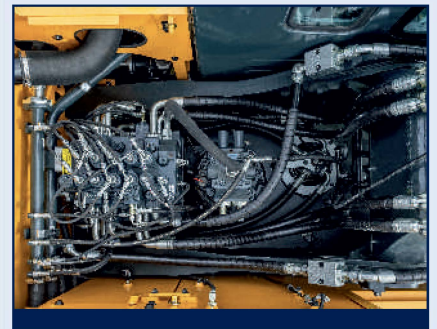
## RUGGED UNDERCARRIAGE

X frame provides excellent resistance to torsional bending to enhance structure life



## RELIABLE ELECTRICALS

- Dust and water proof connectors
- Longer component life



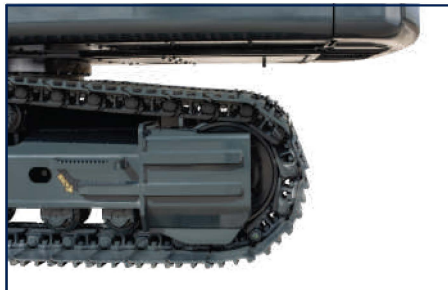
## SWING & TRAVEL SYSTEM

Highly efficient Hyundai designed swing and travel system ensure maximum reliability and performance.



## AIR PRE-CLEANER

- Removes dirt and Debris from air before entering air filter
- Improves air filter life
- Low maintenance cost



## REINFORCED IDLER FRAME



## LOWER FRAME BELLY GUARD



## CASTED BUCKET CONTROL LINK



## FORGED RING BODY



## LEADING SERVICE INTERVAL

More efficient cooling system which extend service intervals , minimize operating cost and reduce machine down time.

### CHANGE INTERVAL

Hydraulic oil	5000 hrs
Hydraulic filter	1000 hrs
Engine oil	500 hrs <b>New!</b>
Engine Filter	500 hrs <b>New!</b>



## IMPROVED COOLING EFFICIENCY

- Radiator and oil cooler are arranged side by side to maximize efficiency
- Easily accessible from ground level to clean



## LARGE LCD MONITOR

Operator can check the machine's vital signs without any difficulties

- **Maintenance Management**  
Proactive maintenance
- **Self Diagnostic**  
Reduces down time
- **Warning Indicator**  
Ensures safe working

## DURABLE MOUNTING PIN BUSH



**New!**

Hinged type front glass guard for easy cleaning

## EASY ACCESSIBILITY

Easy access for maintenance means regular checks get done faster. Hyundai's SMART PLUS machines feature easy service access to increase uptime and reduce operating costs.



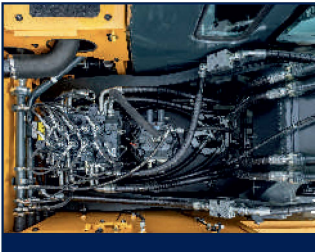
## SAFETY - PEACE OF MIND AND OPERATOR CONFIDENCE

Cabin is integrally welded with low-stress using high strength steel to provide enhanced protection. Handrails and steps are provided for easy operation. Engine fan guard avoid chances of accidental injury.



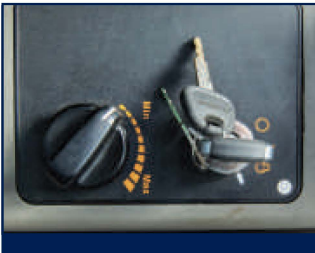
### COUNTER BALANCE VALVE

Works as a hydrostatic brake and prevents machine against accidental roll down in steep gradients.



### BOOM & ARM HOLDING SYSTEM

Prevent attachments from drifting against gravity due to prolonged overhanging.



### ANTI RESTART FUNCTION

Prevents starter from damage during engine operation



**AUTO ENGINE OVERHEAT & WARM UP FUNCTION**



**BATTERY DISCONNECT SWITCH**



**LOWER BELLY GUARD**



**TANK SAFETY COVER**

## HYUNDAI GENUINE PARTS

Developed in synergy with our machines, Hyundai parts and lubricants ensure that you get the high levels of performance, reliability and safety that come with the complete Hyundai experience.

Enjoy the confidence and assurance of the most stringent testing procedures and the high quality manufacturing processes safeguarding your machine's health. Experience the versatility of our 200+ strong outlet network across India

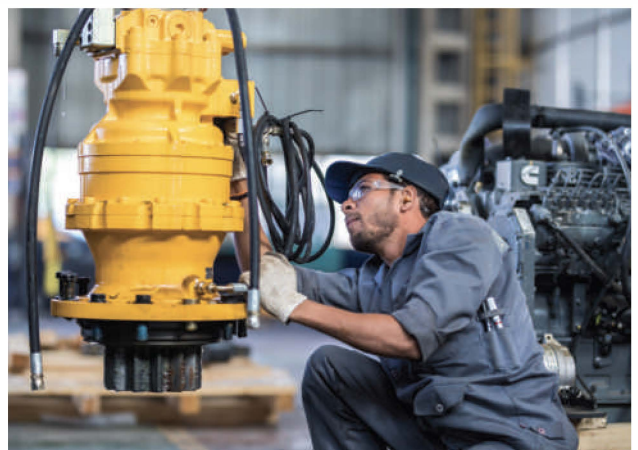
### WHY RISK IT?

Maximize profits and extend your machine's life.



### BENEFITS OF USING GENUINE HYUNDAI PARTS AND LUBRICANTS

- Genuine Hyundai Parts meet strict specifications and standards in Chemistry, Microstructure and Tensile Strength.
- Benefit from the continuous improvements and advancements made by Hyundai's technical team
- Improved performance of hydraulics and engine components
- Enjoy greater productivity with higher uptime
- Higher resale values
- Reduced oil consumption and unexpected breakdowns
- Enhanced component life





## Engine

Maker/Model		Cummins6BT5.9-C	
Rated flywheel horse power	SAE	J1995 (Gross) J1349 (Net)	140HP (104KW) @2000rpm 136HP (101KW) @2000rpm
Max Torque		57.6kgf.m @1600rpm	
Displacement		5880cc	

## Hydraulic System

Main pump	
Type	Two variable displacement piston pumps
Max. flow	2x220 lpm
Sub-pump for pilot circuit	Gear pump
Cross-sensing & fuel saving pump system	

## Hydraulic Motors

Travel	Two speed axis piston motor with counter balance valve and parking brake
Swing	Axial piston motor with automatic brake

## Relief Valve Settings

Implement Circuit	330kgf/cm <sup>2</sup>
Travel	330kgf/cm <sup>2</sup>
Swing Circuit	240kgf/cm <sup>2</sup>
Pilot Circuit	35kgf/cm <sup>2</sup>
Service valve	Installed

## Coolant & Lubricant Capacity

REFILLING	LITER
Fuel tank	340
Engine coolant	25.5
Engine oil	21
Swing device	5
Final drive (each)	5.8
Hydraulic system / Hydraulic tank	260 / 150

## Drives & Brakes

Drive method	Fully hydrostatic type
Drive motor	Axial piston motor in-shoe design
Reduction system	Planetary reduction gear
Max.drawbar pull	21100kgf (46500 lbf)
Max.travel speed (high/low)	5.3kmph/3.4kmph
Gradeability	35 Degree (70%)
Parking brake	Multi wet disc

## Undercarriage

X-Leg type centre frame is integrally welded with reinforced box section track frames. The undercarriage includes lubricated rollers, idlers, track adjusters with shock absorbing spring and sprockets and trackchain with triple grouse shoes.

Centre frame	X-leg type
Track frame	Pentagonal box type
No. of shoes on each side	46
No. of carrier rollers each side	2
No. of track rollers each side	7
No. of rail guard each side	1

## Swing System

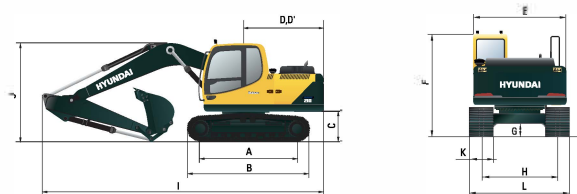
Swing motor	Axial piston motor
Swing reduction	Planetary gear reduction
Swing bearing lubrication	Grease bathed
Swing brake	Multi wet disc
Swing speed	11 rpm

## Operating Weight

Shoe Width mm (in)	Operating weight kg (lb)	Ground pressure kgf/cm <sup>2</sup> (psi)
600 mm (24")	21,200 (46,738)	0.48 (6.83)

## Dimensions

(mm)



A	Tumbler distance	3370
B	Overall length of crawler	4160
C	Ground clearance of counter weight	1060
D	Tail swing radius	2830
D'	Rear-end length	2770
E	Overall width of upper structure	2700
F	Overall height of cabin	2920
G	Min. ground clearance	480
H	Track gauge	2200
I	Overall length	9570
J	Overall height of boom	3110
K	Track shoe width	600
L	Overall width	2800

## Working Ranges

(mm)

Arm length (std.)		*2400	2920	Boom length (std.)		5680
A	Maximum Digging Reach.	9480	9950			
A'	Digging Reach on Ground.	9300	9780			
B	Max Digging Depth	6050	6570			
B'	Max- Digging Depth (8' level).	5840	6390			
C	Vertical Wall Digging Depth	5100	5710			
D	Maximum Digging Height	9470	9720			
E	Maximum Dumping Height.	6670	6910			
F	Minimum Swing Radius.	3580	3510			
					Bucket Digging Force	15600kgf
					Arm Crowd Force	12500kgf

## LIFTING CAPACITIES R210 SMART PLUS



Rating over-front



Rating over-side

Boom: 5.68 m (18' 8") / Arm: 2.4 m (7' 10") / Bucket: 0.92 m <sup>3</sup> (1.20yd <sup>3</sup> ) SAE heaped/ Shoe: 600mm(24") triple grouser with 3,800kg (8,308 lb) counterweight														
Lift-point height (m/ft)		Lift-point radius										At max. reach		
		1.5 m (5.0 ft)		3 m (9.8 ft)		4.5 m (14.8 ft)		6.0 m (19.7 ft)		7.5 m (24.6 ft)		Capacity		Reach
														m (ft)
7.5m (24.6ft)	kg											*3970	*3970	5.70
	lb											*8750	*8750	(18.7)
6.0m (19.7ft)	kg							*3900	*3900			*3920	3100	6.91
	lb							*8600	*8600			*8640	6830	(22.7)
4.5m (14.8ft)	kg					*5070	*5070	*4320	3910	*4010	2560	*3950	2470	7.64
	lb					*11180	*11180	*9520	8620	*8840	5640	*8710	5450	(25.1)
3.0m (9.8ft)	kg					*6630	5760	*5020	3630	4060	2450	3610	2150	8.02
	lb					*14620	12700	*11070	8000	8950	5400	7960	4740	(26.3)
1.5 m (4.9ft)	kg					*8060	5200	5640	3360	3920	2320	3450	2020	8.11
	lb					*17770	11460	12430	7410	8640	5110	7610	4450	(26.6)
0.0m (0.0ft)	kg			*6120	*6120	8700	4920	5440	3180	3830	2230	3520	2040	7.90
	lb			*13490	*13490	19180	10850	11990	7010	8440	4920	7760	4500	(25.9)
-1.5m (-4.9ft)	kg			*11080	9730	8640	4870	5370	3110			3900	2260	7.39
	lb			*24430	21450	19050	10740	11840	6860			8600	4980	(24.2)
-3.0m (-9.8ft)	kg			*11680	9970	*8120	4970	5440	3180			4830	2840	6.49
	lb			*25750	21980	*17900	10960	11990	7010			10650	6260	(21.3)
-4.5m (-14.8ft)	kg			*8970	*8970	*6300	5260					*5510	4480	5.00
	lb			*19780	*19780	*13890	11600					*12150	9880	(16.4)

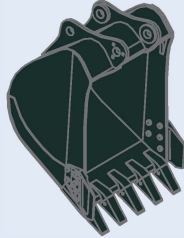
Boom: 5.68 m (18' 8") / Arm: 2.92 m (9' 7") / Bucket: 0.92 m <sup>3</sup> (1.20yd <sup>3</sup> ) SAE heaped/ Shoe: 600mm(24") triple grouser with 3,800kg (8,308 lb) counterweight														
Lift-point height (m/ft)		Lift-point radius										At max. reach		
		1.5 m (5.0 ft)		3 m (9.8 ft)		4.5 m (14.8 ft)		6.0 m (19.7 ft)		7.5 m (24.6 ft)		Capacity		Reach
														m (ft)
7.5m (24.6ft)	kg											*2690	*2690	6.44
	lb											*5930	*5930	(21.1)
6.0m (19.7ft)	kg							*3400	*3400	*2630	*2630	*2540	*2540	7.53
	lb							*7500	*7500	*5800	*5800	*5600	*5600	(24.7)
4.5m (14.8ft)	kg							*3870	*3870	*3630	2620	*2540	2160	8.20
	lb							*8530	*8530	*8000	5780	*5600	4760	(26.9)
3.0m (9.8ft)	kg			*9610	*9610	*5970	*5970	*4630	3710	*3980	2480	*2670	1900	8.56
	lb			*21190	*21190	*13160	*13160	*10210	8180	*8770	5470	*5890	4190	(28.1)
1.5 m (4.9ft)	kg			*5920	*5920	*7570	5370	*5440	3420	3950	2340	*2940	1790	8.64
	lb			*13050	*13050	*16690	11840	*11990	7540	8710	5160	*6480	3950	(28.3)
0.0m (0.0ft)	kg			*6910	*6910	*8590	5010	5480	3210	3820	2220	3140	1800	8.45
	lb			*15230	*15230	*18940	11050	12080	7080	8420	4890	6920	3970	(27.7)
-1.5m (-4.9ft)	kg	*6250	*6250	*10050	9670	8650	4880	5360	3100	3760	2170	3430	1970	7.97
	lb	*13780	*13780	*22160	21320	19070	10760	11820	6830	8290	4780	7560	4340	(26.1)
-3.0m (-9.8ft)	kg	*9780	*9780	*12630	9850	*8490	4910	5370	3110			4100	2380	7.15
	lb	*21560	*21560	*27840	21720	*18720	10820	11840	6860			9040	5250	(23.4)
-4.5m (-14.8ft)	kg			*10420	10230	*7180	5110					*5160	3430	5.83
	lb			*22970	22550	*15830	11270					*11380	7560	(19.1)

- Lifting capacity is based on ISO 10567.
- Lifting capacity of the Robex Series does not exceed 75% of the tipping load with the machine on firm, level ground or 87% of full hydraulic capacity.
- The Lift-point is a hook (standard equipment) located on the back of the bucket.
- (\*) indicates the load limited by hydraulic capacity.

## BUCKETS

All buckets are welded with high-strength steel.

### GENERAL PURPOSE



SAE heaped \*0.92m<sup>3</sup>(1.20 yd<sup>3</sup>)

### HEAVY DUTY



SAE heaped ● 0.87m<sup>3</sup>(1.14 yd<sup>3</sup>)

Capacity m <sup>3</sup> (yd <sup>3</sup> )		Width mm (in)		Weight. kg (lb)	Recommendation mm (ft -in)	
SAE heaped	CECE heaped	Without side cutters	With side cutters		5.68m (18' 8") Boom	
					*2.4m (7' 10") Arm	2.92m (9' 7") Arm
* 0.92m <sup>3</sup> (1.20yd <sup>3</sup> )GP	0.80m <sup>3</sup> (1.05yd <sup>3</sup> )	1150 (45.3")	1270 (50.0")	785 (1731)	●	■
◎ 0.87m <sup>3</sup> (1.14yd <sup>3</sup> )HD	0.75m <sup>3</sup> (0.98yd <sup>3</sup> )	1140 (44.9")	-	946 (2086)	●	■

\* : Standard backhoe bucket

◎ : Rock Heavy Duty bucket

● Applicable for materials with density of 2,000kg/m<sup>3</sup> (3,370lb yd<sup>3</sup>)or less

■ Applicable for materials with density of 1,600 kg/m<sup>3</sup> (2,700 lb/yd<sup>3</sup>) or less

## ATTACHMENT

Boom and arm are of all-welded with a low-stress, full-box section design. 5.68m (18'8") mono boom and 2.4m (7'10"), 2.92m (9'7") Arm are available. Buckets are all-welded, high-strength steel implements.

## DIGGING FORCE

Arm	Length	mm (ft.in)	*2,400 (7' 10")	2,920 (9' 7")
	Weight	kg (lb)	720 (1,590)	750 (1,650)
Bucket digging force	SAE	kN	133.4	133.4
		kgf	13,600	13,600
		lbf	29,980	29,980
	ISO	kN	153.0	154.0
		kgf	15,600	15,700
		lbf	34,390	34,610
Arm crowd force	SAE	kN	117.7	99.0
		kgf	12,000	10,100
		lbf	26,460	22,270
	ISO	kN	122.6	103.0
		kgf	12,500	10,500
		lbf	27,560	23,150

Note: Arm weight includes bucket cylinder and linkage \*Standard arm