

Warwick Townwide Safety Action Plan Public Involvement Phase 1: Summary April 10, 2026



The Town of Warwick was recently awarded a Safe Streets and Roads for All (SS4A) from the FHWA to develop a transportation Safety Action Plan. This plan will examine the existing safety conditions in the Town and its three villages of Florida, Greenwood Lake, and Warwick and produce actionable safety countermeasures and policy strategies with the goal of eliminating fatal and serious injury crashes in Warwick.

Public involvement is a vital part of this Safety Action Plan, and documenting the feedback given from Town residents and stakeholders will help guide the project team in making preliminary countermeasure recommendations and policy strategies. The feedback from public open-house information sessions and surveys will help the final Safety Action Plan reflect specific concerns from residents that data cannot show. Public involvement is extremely important for assembling a more complete picture about road safety conditions and locations of concern which crash data may miss.

The first phase of engagement involved a public information session serving as an introduction to the study at a townwide level, a set of three village-level meetings, and an online survey. The initial townwide meeting involved the presentation of initial crash trends, study goals, distribution of the first survey, and promotion of the project website. Soon after the townwide kickoff meeting, a set of village-level meetings took place in the three villages of Florida, Greenwood Lake, and Warwick. Village-specific crash information was shared at these meetings, which also served as an opportunity for residents to give village-specific information and feedback to the project team. For many, the village-level meetings were an introduction to the project.

The second phase of public involvement will primarily focus on sharing in-depth crash information, more refined safety countermeasures, and priority locations for safety improvements. These meetings will be either virtual or pre-recorded “go-at-your-own-pace” style meetings. Finally, public involvement will conclude with the presentation of safety recommendations, priority locations in the town and at the village-level, and policy strategy recommendations found in the Safety Action Plan.

In addition to public meetings, a Stakeholder Advisory Group (SAG), was formed at the beginning of the project. Made up of local experts and key stakeholders, the SAG will be consistently engaged with the project team at important steps of forming the final Safety Action Plan, including during public involvement and when drafting and finalizing recommendations.

Phase 1

Phase 1 of public involvement included:

- One townwide kickoff meeting
- Three village-level meetings
- One public survey

Townwide Meeting #1

The project's first public meeting was held on January 29, 2026, in Warwick Town Hall. At the beginning of the meeting, a presentation was given to provide background on the project, its funding, and the development process of a Safety Action Plan. After the presentation, attendees were able to walk around the room to view graphics, tables, and maps showing crash statistics and possible countermeasures. Project team members were stationed around these materials to answer any questions from attendees. Roughly 15 people were in attendance, including the Town Supervisor and the Mayors of Florida, Greenwood Lake, and Warwick. Additionally, the presentation at the beginning of the meeting was livestreamed.

The following comments encompass general notes, concerns, and suggestions from the attendees, listed by topic.

Pedestrian Improvements

- Interest in Rectangular Rapid Flashing Beacons (RRFBs), more crosswalks, speed humps

Traffic Calming

- Interest in lowering speed limits
- Concerns with speeding

Public Transit / School Buses

- Some in attendance suggest that expanding public transit would create a safer environment with less driving

Roadway Maintenance

- Pavement markings are poor, very faded, hard to see
- Roadway surface is poor, potholes
- Regular roadway maintenance is needed, but it was noted that it is very difficult to keep up with the impacts from the construction vehicles which are in the village for all the housing development
- Street signs are not clear or are sometimes turned so that you can't see the name of the road until it is too late

Enforcement

- More enforcement is needed, especially with speeding
- More speed enforcement is needed



Figure 1 - There were maps where attendees could point out areas of concern



Figure 2 - The Town-wide meeting was an open house with boards around the room

Village-Level Meetings (in-person)

Following the first townwide meeting, village-level meetings were held at each of the three villages. The meetings for the villages of Greenwood Lake and Florida took place on March 7, 2026, and the meeting for the village of Warwick took place on March 10, 2026. These meetings allowed residents from each of the three villages in the town to share specific traffic safety concerns in their village.

A presentation was given which served as an introduction to the project but with some updates on preliminary survey results and village-specific crash information. Similar boards to the townwide meeting were set up in an open-house style to facilitate an open discussion on village-specific traffic safety issues, concerns, and possible solutions. A large tabletop map of the respective village allowed community members to pinpoint these concerns and countermeasures to a location in Greenwood Lake, Florida, or Warwick.

The following comments encompass general notes, concerns, and suggestions from the attendees, listed by topic and location.

Topics:

Pedestrian Improvements

- Interest in RRFBs, more crosswalks, speed humps, sidewalks
- Mid-block crossings in denser areas

Traffic Calming

- Interest in lowering speed limits, SDW Gateways
- Concerns with speeding

Public Transit / School Buses

- Some in attendance suggest that expanding public transit would create a safer environment with less driving
- Greenwood Lake Crossing Guard
 - Poor sightlines around school bus stops and crossings in GL village center
 - Drivers speeding around stopped school buses
 - See attached document from crossing guard on safety issues

Roadway Maintenance

- Pavement markings are poor, very faded, hard to see, not existent
- Narrow roadways
- Regular roadway maintenance is needed, but it was noted that it is very difficult to keep up with the impacts from the construction vehicles which are in the village for all the housing development
- Street signs are not clear or are sometimes turned so that you can't see the name of the road until it is too late

Enforcement

- Residents have seen some police enforcement at uncontrolled crossings when cars don't adequately stop
- More enforcement is needed, especially with parking, drivers park too close to intersections

- More speed enforcement is needed
- Speed radar camera enforcement was suggested, especially on West Street in Warwick

Locations:

These comments have a specific location attributed to them along with a suggestion or concern:

Greenwood Lake

- Jersey Ave – Heavy vehicle traffic; no sidewalks
- Edgemere Ave – Old railroad bed; no guardrail on shoulder against lake; falling rocks; 25 mph in GL but 40 in NJ
- Windermere Ave – Little daylighting, cars blocking sightlines; Near school, need RRFBs for children
- NY-17A – Speeding going into village from both entrances; gateways at both entrances
- Windermere/NY-17A – difficult turns on intersection; unclear traffic movements for visitors
- Overall
 - More RRFBs, better daylighting
 - Heavy vehicle traffic cutting through village to NJ

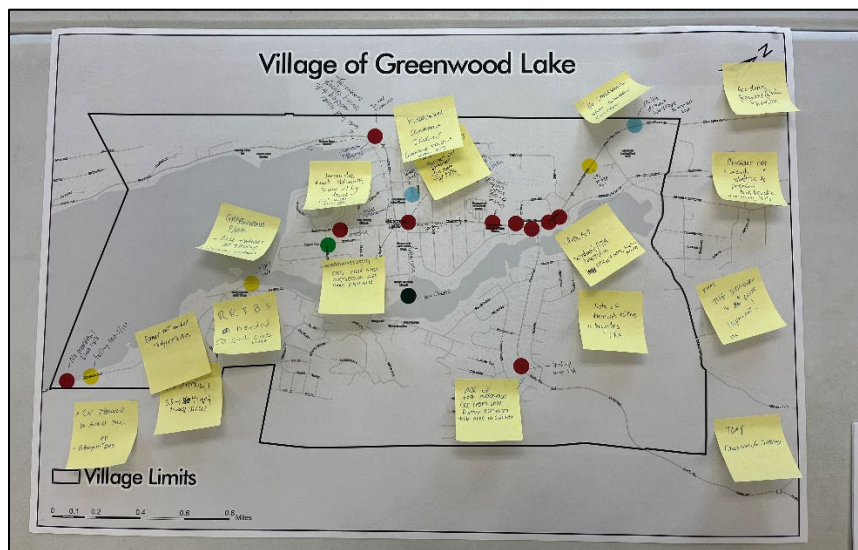


Figure 3 - Roll Plot from Greenwood Lake Open House

Florida

- Maple Ave – cut through route, especially since NY-94 project began, high speeds; inconsistent road width; no painted roadway markings; mixed land use (industrial and residential)
 - Bike paths to restrict road width
- Main Street – lack of visible pedestrian crossings; fatal crash in 2017
 - More pedestrian crossings; RRFBs; extend sidewalk past Werner Ave; mid-block crosswalks
- Willet St – little pedestrian infrastructure
- Glenmere Ave – Dangerous curve for speeds
- Glenmere Lake – No safe route for pedestrians from Village to park
 - Creating trail/sidewalk network for route (see Florida Comp Plan)
- Overall

- Poor lighting
- Lack of enforcement of speeding, etc.



Figure 4 - Roll Plot from the Florida Open House

Warwick

- Cascade Road – little to no shoulders; high speeds on 30 mph posted speed limit; speeding around school bus
- West Street – need sidewalks; speeding; lack of enforcement
 - Speed radar cameras; RRFBs
- Orchard St – Used as cut through; speeding
 - Speed humps

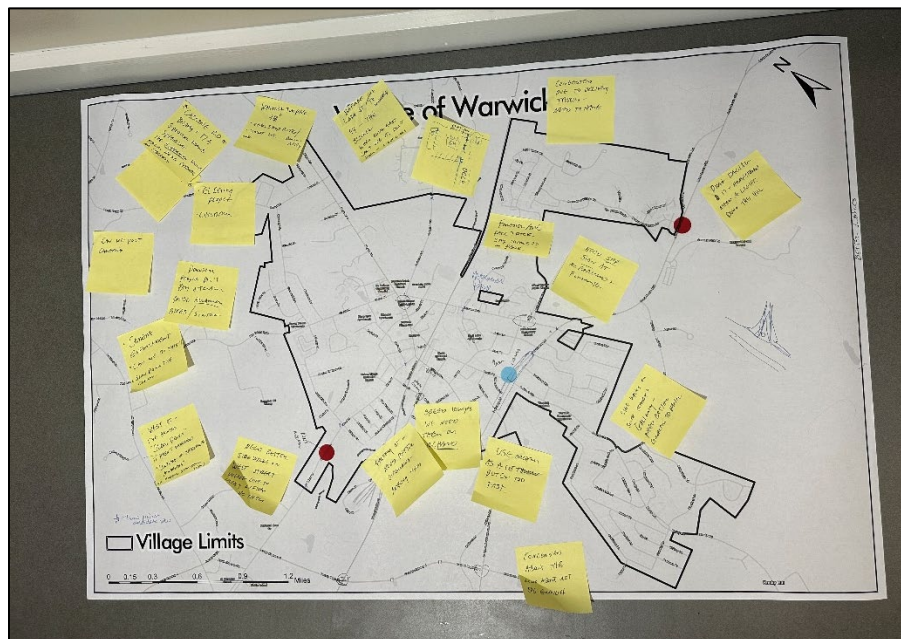


Figure 5 - Roll Plot from the Warwick Open House



Figure 6 - Attendees were able to Leave Feedback on a Map of their Village



Figure 7 - This Mapping Exercise Produced Helpful Conversations about Traffic Safety in each Village

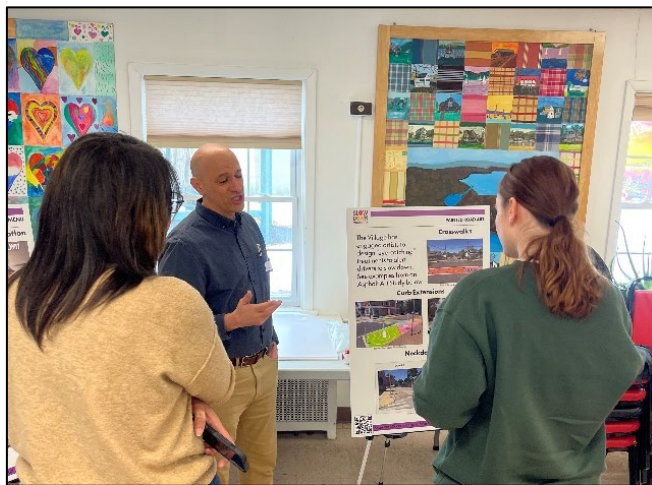


Figure 8 - Boards with Project Information were Stationed Around the Room at each Meeting



Figure 9 - Mayor Howley at the Greenwood Lake Open House



Figure 10 - Mayor Newhard at the Warwick Open House

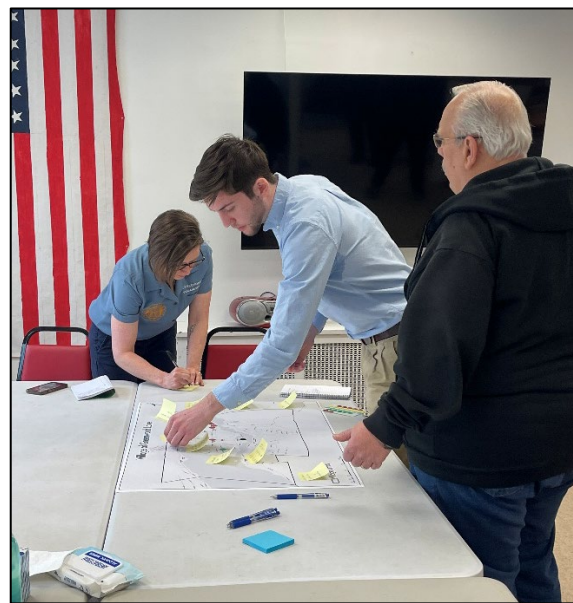


Figure 11 - Mapping Exercise at the Greenwood Lake Open House

Public Survey

An online survey was launched on January 29th, just before the first townwide public meeting, and was live until March 15th. The survey asked residents to share which safety issues they had experienced in the town and rank which strategies they thought would be most effective in combatting traffic safety issues and reducing crashes. Residents were also able to share free-form thoughts on the project and what they would like to see the plan address. The online survey was open from 1/29/2026 until 3/15/2026 and received 215 responses.

The screenshot shows the survey form with the following content:

Town of Warwick Transportation Safety Action Plan Survey

The purpose of the comprehensive transportation safety action plan is to develop an integrated, publicly-informed, and well-defined strategy to proactively reduce and eliminate roadway fatalities and serious injuries.

Introduction

In this survey, we would like to collect responses relating to transportation safety concerns in the town of Warwick (including the three Villages of Warwick, Florida, and Greenwood Lake). First, we will ask to provide information on your location in the Town. Next, we will ask about what, if any, transportation safety concerns you have experienced in the Town of Warwick and if this has affected your travel habits. Please go to WarwickSafetyActionPlan.com to learn more about the project.

Name

Email*

Where do you live in the Town?*

Select one of the following.

Figure 12 - Screenshot from Online Survey

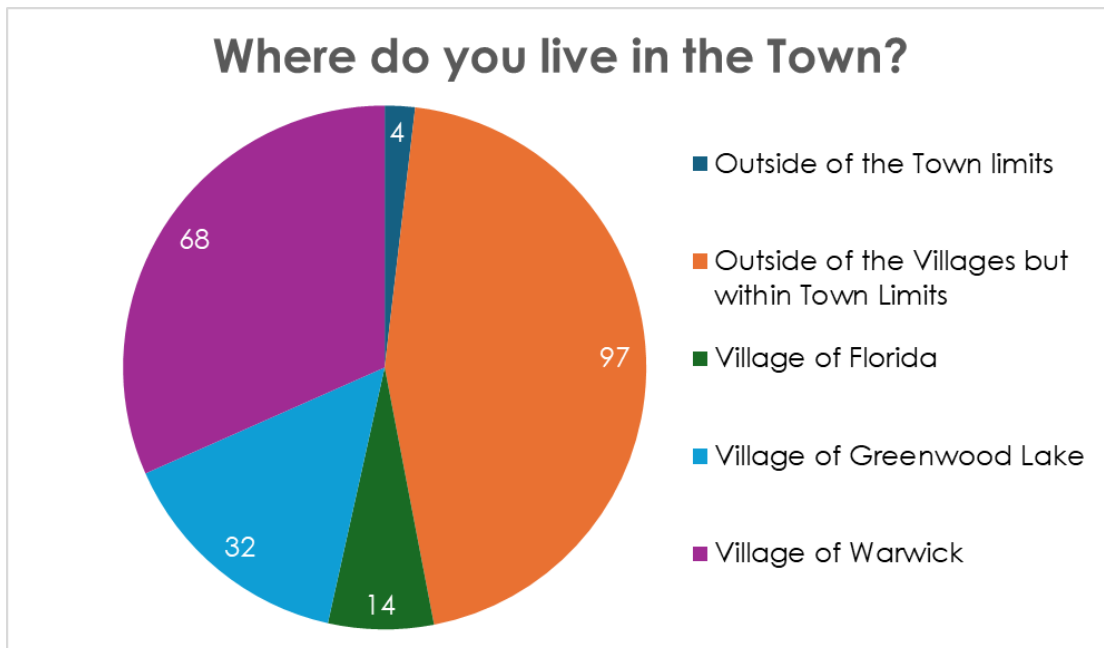


Figure 13 - Pie Chart of Where Respondents are From

Safety Issue Selected

Figure 6 shows the most frequently selected safety issue experienced on the online survey. Users could select up to three strategies per submittal. This information will be used to develop strategies for use in the Safety Action Plan.

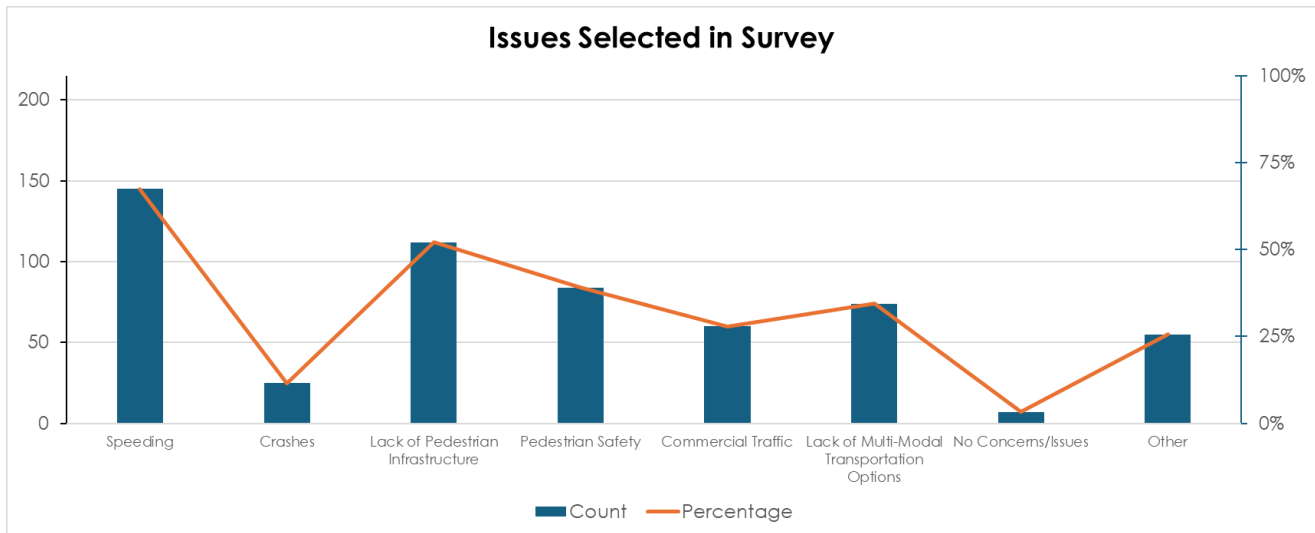
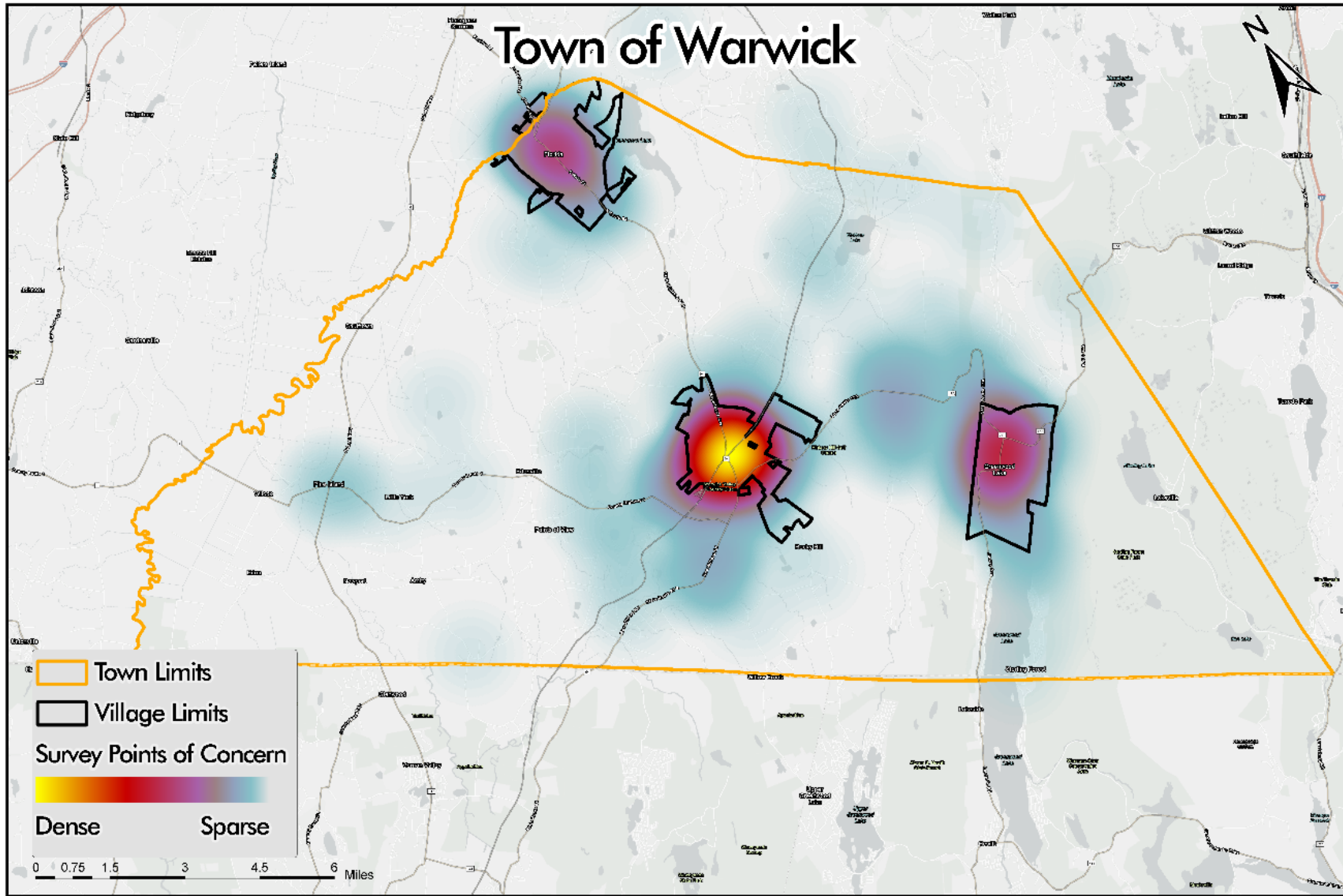


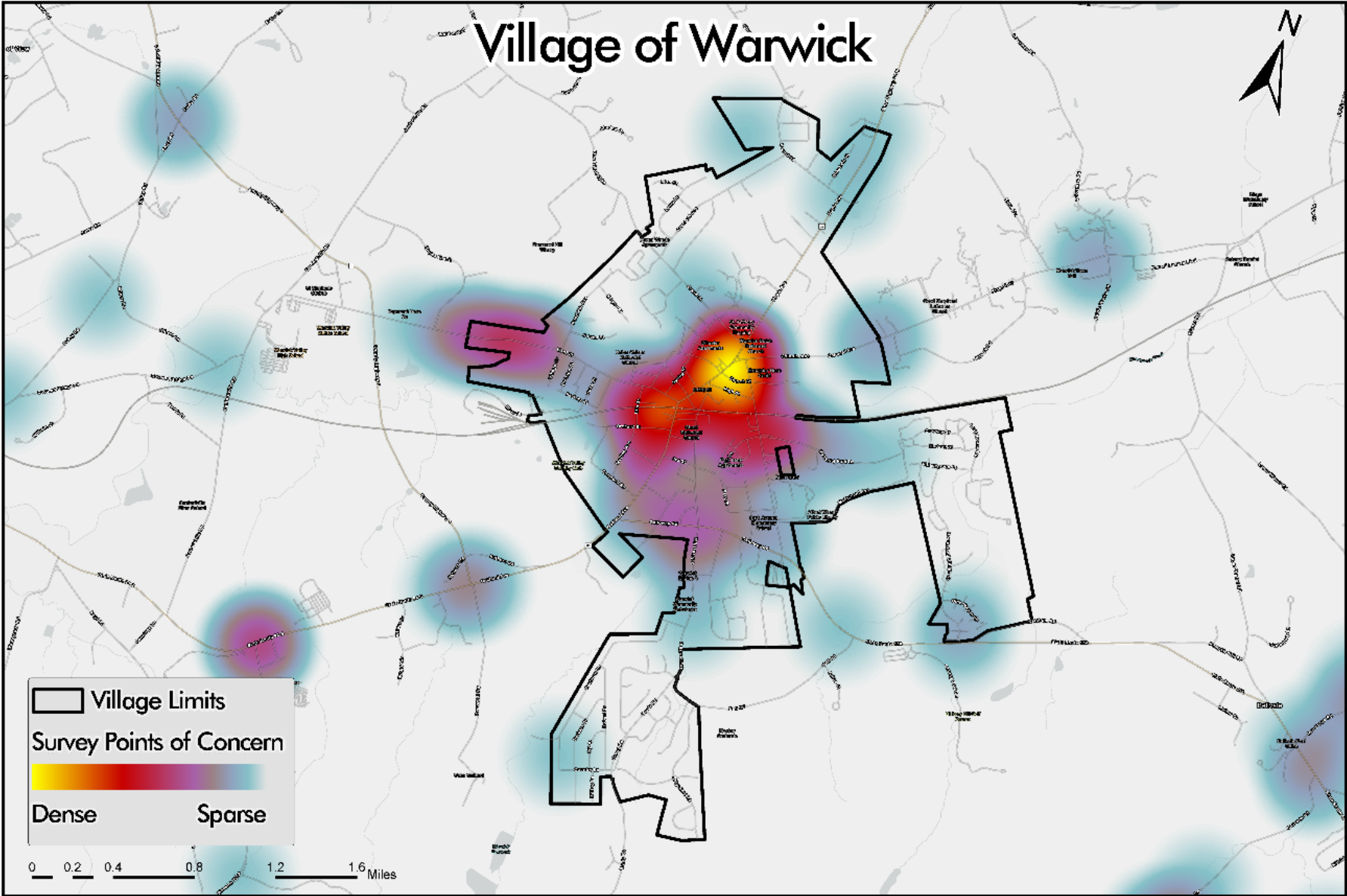
Figure 14: Bar graph of issues selected by survey respondents

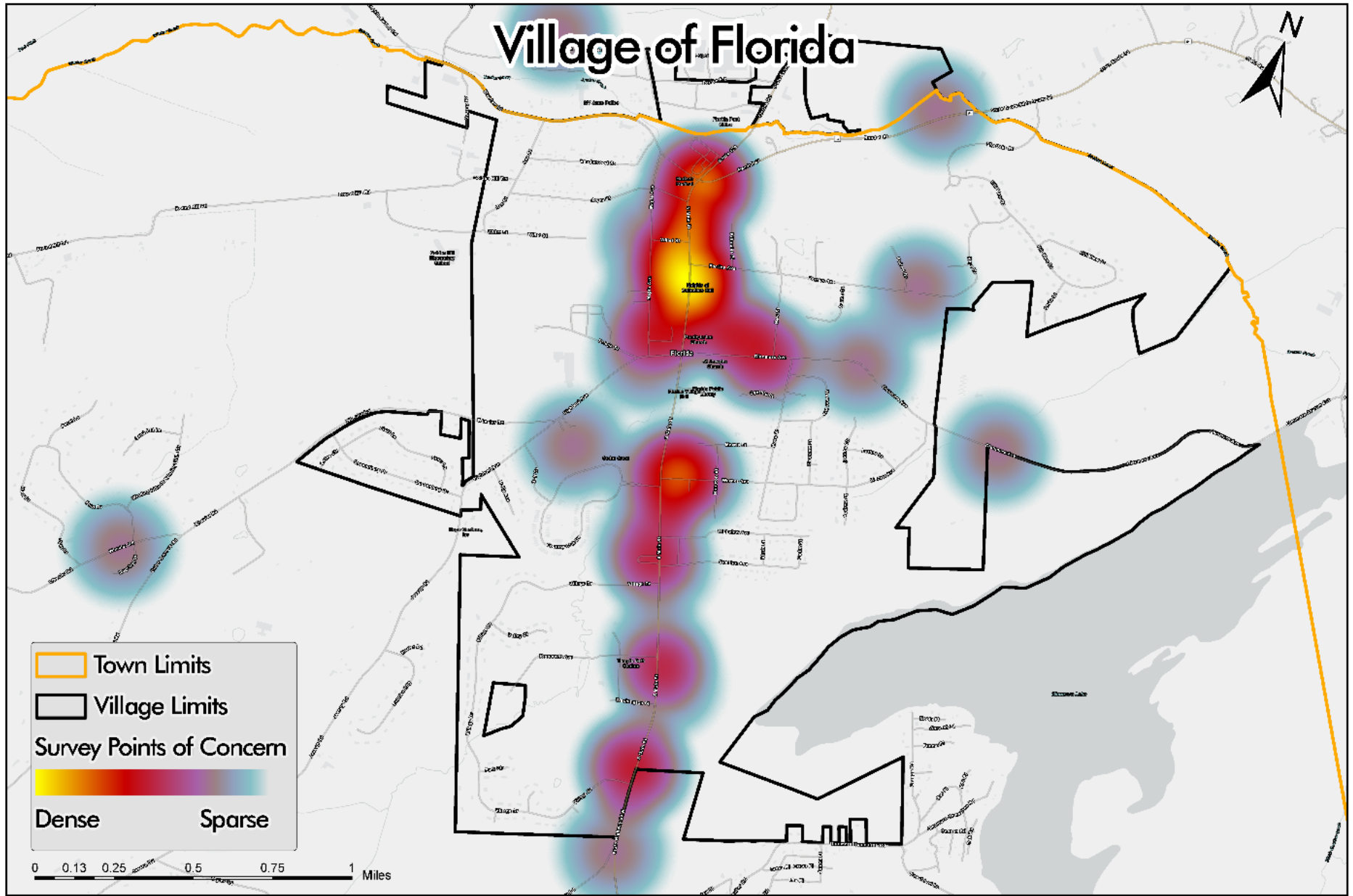
An “other” option was also available and allowed users to leave their own strategy suggestion. About 25% respondents left their own response. 14 of these responses were related to dangerous driver behavior and 11 were related to dangerous incidents at intersections.

Locations of Concern

Below are four heat maps that show the most common areas survey users identified as a place where they have experienced safety issues. One map is a Town wide heat map while the other three zoom in on each Village in Warwick.







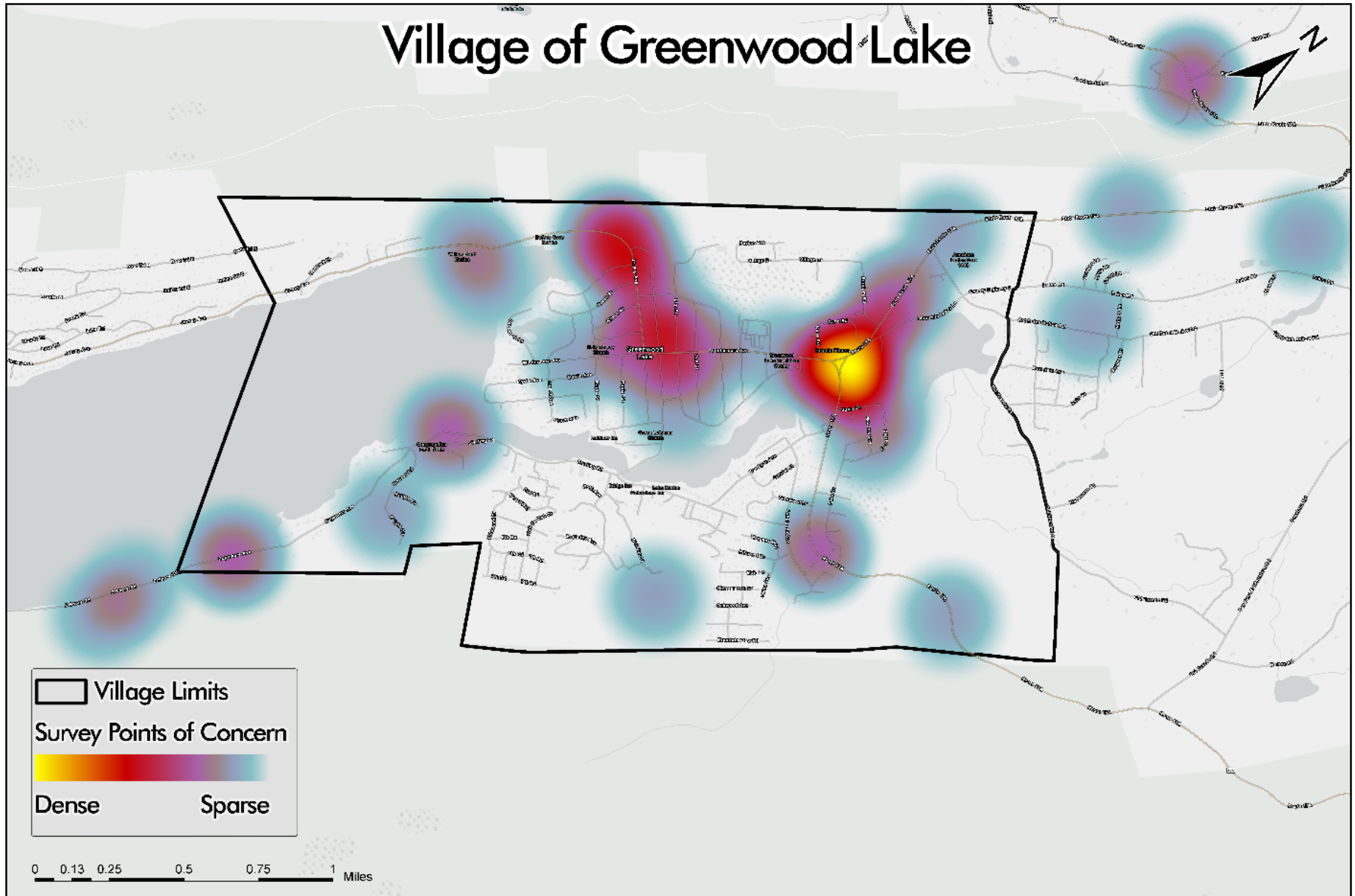


Figure 15 - Heat map of locations of concern from Public Survey #1

Free-Form Feedback

A final category in the Public Survey allowed respondents to write in their own comments. 211 free-form comments were left, in total. 164 from the online survey and 47 from comments left on the roll plots at the Village-level public meetings. Many of the write-ins reflected specific information under the umbrella of one of the selectable strategies. Comments range from pointing out a lack of infrastructure on certain segments of roadways:

“159 West St. The section between Pond Hill and Pulpit Rock needs a dedicated walking path (sidewalk) on one side for residents to pick up our mail and school children who regularly walk in groups along this most narrow stretch of West. St.”

“Many people in Warwick love to walk and bike throughout the village. However, the lack of consistent sidewalks makes it hard. Example is south street extension is dangerous to walk on, but many people walk and bike on that road.”

To frustration with speeding around Warwick:

“South Main Street in Florida. A lot of excessive speeding.”

“I walk along State School Road and there are always cars and trucks speeding in both directions.”

Figure 9 shows these free-form responses broken down by six safety topics: Unsafe Vulnerable Road Users, Speeding, Intersection Issues, Infrastructure Issues, Unsafe Driver Behavior (other than speeding), and Cut Through Traffic. The majority of responses fell into two categories: unsafe vulnerable road user issues (42.67%), such as lack of sidewalks, and speeding (31.56%), which closely resembles the results of the “safety issues experienced” question.

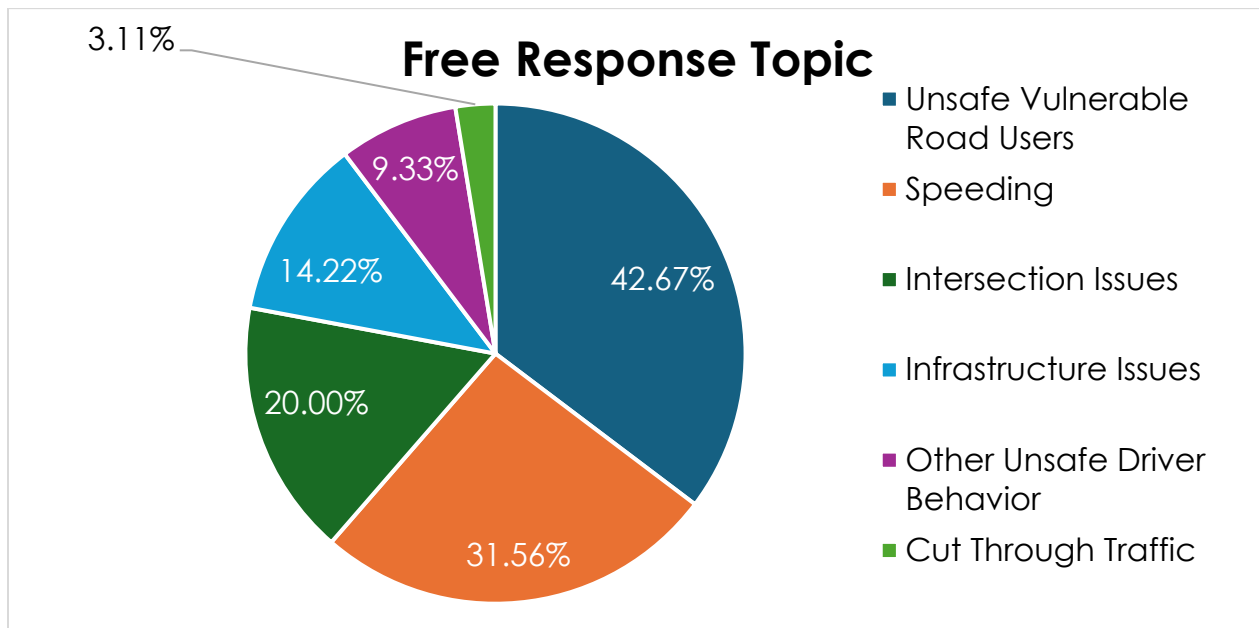


Figure 16 - Free-form Responses Broken Down by Safety Topic

SAG Meetings

The SAG met once ahead of Phase 1 of public involvement to introduce the project to key stakeholders in the Town and Villages and coordinate engagement ahead of the Phase 1 meetings. Stakeholders from Orange

County Transit, Warwick Chamber of Commerce, and local representatives make up some of the SAG. The SAG plans to meet twice ahead of Phase 2 of engagement to discuss safety countermeasures based on detailed crash data and community feedback from the Phase 1 meetings.

Key Themes

The feedback received in Phase 1 of engagement primarily consisted of frustrations with dangerous driver behavior (including speeding), poor intersection designs, and unsafe conditions for pedestrians and cyclists. Additionally, many stakeholders and residents expressed the desire for improvements to be made at specific locations to reduce these dangerous conditions. In the Village of Warwick, West Street was frequently cited as in need of pedestrian accommodations, as well as Cascade Road and Orchard Street. In the Village of Florida, Maple Ave was noted as dangerous by many residents. In the Village of Greenwood Lake, high speeds were noted at the entrances to the village via NY-17A. Unsafe pedestrian conditions were described in the village core along Windermere Avenue. It is clear from the crash data gathered and the feedback received at the public meetings that driver behavior, especially speeding, and the lack of pedestrian accommodations, such as sidewalks and visible crossings, are critical safety issues in the Town of Warwick and its villages that will need to be addressed in the Safety Action Plan.

Next Steps

The data and feedback collected in this phase of engagement will be considered in the drafting of possible countermeasures and priority locations. Additionally, in-depth crash data will be considered in the drafting of preliminary countermeasures and priority locations ahead of Phase 2 of public involvement.

In the next phase of public involvement, preliminary priority locations and countermeasures will be shared with stakeholders and residents. Another set of village meetings will be held, as well as another townwide meeting. All of these meetings will be held virtually but held in a similar, open-house style to the in-person meetings in order to facilitate more feedback from the community ahead of the draft Safety Action Plan.

Appendix

Warwick SS4A
Appendix - Online Survey #1

| Where do you live in the Town? | What is your primary mode of transportation in the Town? | What transportation safety issues have you experienced in the Town of Warwick? | Other - What transportation safety issues have you experienced in the Town of Warwick? | What strategies would you like to see the Town of Warwick use to combat the transportation safety issues? | Please use this space to say more about your experiences on Warwick roads, specific locations where you feel unsafe, or feedback about the project. |
|--|--|--|--|---|---|
| Outside of the Villages but within the Town Limits | Automobile | Speeding, Crashes, Lack of Pedestrian Infrastructure, Pedestrian Safety, Commercial Traffic, Lack of Multi-Modal Transport | | Engineering, Education, Enforcement | |
| Village of Warwick | Automobile | Speeding, Lack of Pedestrian Infrastructure, Pedestrian Safety, Commercial Traffic, Lack of Multi-Modal Transport | | Engineering, Education, Enforcement | |
| Outside of the Villages but within the Town Limits | Automobile | Speeding, Crashes, Lack of Multi-Modal Transport | | Engineering, Education, Enforcement | |
| Outside of the Villages but within the Town Limits | Automobile | Speeding, Lack of Pedestrian Infrastructure, Commercial Traffic | | Engineering, Enforcement, Education | |
| Outside of the Villages but within the Town Limits | Automobile | Speeding, Pedestrian Safety | | Enforcement, Engineering, Education | |
| Village of Warwick | Automobile | No Concerns or Issues | | Education, Engineering, Enforcement | |
| Village of Warwick | Automobile | Speeding, Pedestrian Safety | | Enforcement, Engineering, Education | |
| Outside of the Villages but within the Town Limits | Automobile | Speeding, Crashes, Lack of Pedestrian Infrastructure, Lack of Multi-Modal Transport | | Engineering, Education, Enforcement | |

Warwick SS4A
Appendix - Online Survey #1

| Where do you live in the Town? | What is your primary mode of transportation in the Town? | What transportation safety issues have you experienced in the Town of Warwick? | Other - What transportation safety issues have you experienced in the Town of Warwick? | What strategies would you like to see the Town of Warwick use to combat the transportation safety issues? | Please use this space to say more about your experiences on Warwick roads, specific locations where you feel unsafe, or feedback about the project. |
|--|--|--|--|---|--|
| Village of Warwick | Automobile | Speeding,Lack of Pedestrian Infrastructure,Pedestrian Safety,Lack of Multi-Modal Transport | | Engineering, Enforcement, Education | I live on South street extension and I see people of all ages walking or biking down the street daily, for both exercise and to get to the village just two blocks away. I also see people in cars speeding down the road at a dangerous pace for such a residential street. Because of the lack of any sidewalks on South street extension, people are forced to walk in the road which is narrow. (Made even more so now with snow!) A huge percentage of village residents live on the far side of Galloway, and we should have a safe path to send our kids to the playground just two blocks away. Sidewalk and speed bumps please! |
| Village of Greenwood Lake | Automobile | other | Intersection in need of a traffic signal | Engineering, Education, Enforcement | There needs to be a traffic signal at the intersection of 17a and Lakes Road in Greenwood Lake. |
| Outside of the Villages but within the Town Limits | Automobile | Commercial Traffic | | Engineering, Education, Enforcement | Only areas that I have experienced issues during peak driving times and with increase of traffic are the intersection of 17A and Mountain Lakes Ln coming into Village of Greenwood Lake, Forester Ave and Colonial Ave and Rt 94 and Warwick Turnpike. |

Warwick SS4A
Appendix - Online Survey #1

| Where do you live in the Town? | What is your primary mode of transportation in the Town? | What transportation safety issues have you experienced in the Town of Warwick? | Other - What transportation safety issues have you experienced in the Town of Warwick? | What strategies would you like to see the Town of Warwick use to combat the transportation safety issues? | Please use this space to say more about your experiences on Warwick roads, specific locations where you feel unsafe, or feedback about the project. |
|--|--|--|---|---|--|
| Outside of the Villages but within the Town Limits | Automobile | Speeding,Lack of Pedestrian Infrastructure,other | Lack of speed limit signage or clear signs, tourists and visitors don't know when speed increases | Engineering, Enforcement, Education | Consistent and clear Speed limit signage is huge. And having passing lanes and turning lanes |
| Village of Warwick | Automobile | Speeding,Lack of Pedestrian Infrastructure,other | People either doing rolling stops at stop signs or just only slowing down | Education, Enforcement, Engineering | Cars crossing over double yellow lines on 17A to get past you. The Forester/ColonialRoad intersection. I'm surprised there aren't more accidents there. The hideous potholes etc as you travel through Florida on 94/17A. |
| Outside of the Villages but within the Town Limits | Automobile | Lack of Pedestrian Infrastructure,Lack of Multi-Modal Transport | | Engineering, Enforcement, Education | rt 17a greenwood lake ny windermere ave greenwood lake ny teneyck ave greenwood lake ny |
| Village of Greenwood Lake | Automobile | Speeding,Pedestrian Safety | | Enforcement, Engineering, Education | Speeding is a huge problem all over. Many of the streets in Greenwood Lake are 15 mph but people are doing way over that and it's dangerous. I also don't think there are enough speed limit signs. My street, which is where the elementary school is located has one speed limit sign on it and it's sort of buried and can't even see it. |

Warwick SS4A
Appendix - Online Survey #1

| Where do you live in the Town? | What is your primary mode of transportation in the Town? | What transportation safety issues have you experienced in the Town of Warwick? | Other - What transportation safety issues have you experienced in the Town of Warwick? | What strategies would you like to see the Town of Warwick use to combat the transportation safety issues? | Please use this space to say more about your experiences on Warwick roads, specific locations where you feel unsafe, or feedback about the project. |
|--|--|--|--|---|---|
| Village of Greenwood Lake | Automobile | Speeding, Lack of Pedestrian Infrastructure, Pedestrian Safety | | Engineering, Education, Enforcement | I drive the speed limit and find that other drivers find that unacceptable. I've been passed on double yellow lines more frequently than I should be. I also would like to see better infrastructure for pedestrians. We live in a beautiful area that could use more sidewalks to help keep people safe as they walk. |
| Village of Warwick | Automobile | Lack of Pedestrian Infrastructure, Lack of Multi-Modal Transport | | Engineering, Education, Enforcement | There needs to be a sidewalk and bike lane that gets pedestrians and cyclists out to the supermarkets from the village in a safe manner |
| Outside of the Villages but within the Town Limits | Automobile | Speeding, Crashes | | Enforcement, Education, Engineering | The majority of unsafe drivers don't care about anyone else but themselves on the road. There is little to no consequences for unsafe and or reckless drivers within the court system. Accountability for actions may be a good place for safe driving to start. |
| Village of Warwick | Automobile | Speeding, Lack of Pedestrian Infrastructure, Commercial Traffic | | Engineering, Education, Enforcement | The roads are very old and were meant for horses. There are wayyyy too many cars and people on the roads nowadays. We need major improvements on infrastructure. |
| Village of Warwick | Automobile | Lack of Multi-Modal Transport | | Engineering, Education, Enforcement | I was unaware of there being a traffic safety issue in Warwick. As such, this grant is the perfect opportunity to move forward with a bike lane project to extend out of the Village to the shops/grocery stores. |

Warwick SS4A
Appendix - Online Survey #1

| Where do you live in the Town? | What is your primary mode of transportation in the Town? | What transportation safety issues have you experienced in the Town of Warwick? | Other - What transportation safety issues have you experienced in the Town of Warwick? | What strategies would you like to see the Town of Warwick use to combat the transportation safety issues? | Please use this space to say more about your experiences on Warwick roads, specific locations where you feel unsafe, or feedback about the project. |
|--|--|--|--|---|---|
| Village of Warwick | Automobile | Speeding, Lack of Pedestrian Infrastructure, Lack of Multi-Modal Transport | | Engineering, Enforcement, Education | The intersection of west st and Oakland is problematic bc everywhere in the village you're supposed to stop for pedestrians in the crosswalk- except there. Despite the walk and don't walk traffic signals people don't follow this rule and it can be very unsafe. Also further up on Oakland and orchard there should be a crosswalk there, I've had challenges trying to support businesses on the other side of the road crossing the street there. And of course sidewalks into the village on west st would be great but as I understand that's a home owners job to maintain. |
| Outside of the Villages but within the Town Limits | Automobile | Speeding, Lack of Multi-Modal Transport | | Engineering, Enforcement, Education | |
| Village of Warwick | Automobile | Speeding, Lack of Pedestrian Infrastructure | | Education, Enforcement, Engineering | One side of the street parking on Wheeler Ave. |
| Outside of the Villages but within the Town Limits | Automobile | Speeding, Lack of Pedestrian Infrastructure | | Engineering, Education, Enforcement | |
| Outside of the Villages but within the Town Limits | Automobile | No Concerns or Issues | | Engineering, Education, Enforcement | I feel that drivers are thoughtful and conscientious about letting pedestrians cross the streets unlike another towns. My only concern is that there's more traffic than there used to be. |

Warwick SS4A
Appendix - Online Survey #1

| Where do you live in the Town? | What is your primary mode of transportation in the Town? | What transportation safety issues have you experienced in the Town of Warwick? | Other - What transportation safety issues have you experienced in the Town of Warwick? | What strategies would you like to see the Town of Warwick use to combat the transportation safety issues? | Please use this space to say more about your experiences on Warwick roads, specific locations where you feel unsafe, or feedback about the project. |
|--|--|---|--|---|---|
| Outside of the Villages but within the Town Limits | Automobile | Speeding,other | | Enforcement, Education, Engineering | Discourage these car and motorcycle clubs from large gatherings driving through our roads. These loud mufflers are very unsettling. They pass cars to keep together creating unsafe environments. Also reduce the speed limit on East Shore rd. 40 mph is way too fast for our residential roads. |
| Village of Warwick | Automobile | Lack of Pedestrian Infrastructure,Lack of Multi-Modal Transport | | Engineering, Enforcement, Education | We very much need bicycle paths and consistently maintained pedestrian sidewalks. |
| Village of Warwick | Automobile | Lack of Pedestrian Infrastructure,Pedestrian Safety,Lack of Multi-Modal Transport,other | Several painted crosswalks are treacherously slippery when wet. | Engineering, Education, Enforcement | |

Warwick SS4A
Appendix - Online Survey #1

| Where do you live in the Town? | What is your primary mode of transportation in the Town? | What transportation safety issues have you experienced in the Town of Warwick? | Other - What transportation safety issues have you experienced in the Town of Warwick? | What strategies would you like to see the Town of Warwick use to combat the transportation safety issues? | Please use this space to say more about your experiences on Warwick roads, specific locations where you feel unsafe, or feedback about the project. |
|--------------------------------|--|---|--|---|---|
| Village of Warwick | Automobile | Lack of Pedestrian Infrastructure, Pedestrian Safety, Lack of Multi-Modal Transport | Engineering, Enforcement, Education | <p>I have noticed several students walking along County Route 1 and West Street to and from the middle school and high school. These roads do not have sidewalks, and I am concerned that this presents a significant safety issue for students traveling on foot from those areas.</p> <p>In addition, vehicles do not always adhere to the posted school speed limits. Traffic frequently builds up near the middle school and high school, and when congestion occurs, some drivers begin speeding around one another, creating an even more dangerous situation for pedestrians.</p> <p>Given the number of students walking these routes and the lack of pedestrian infrastructure, I believe this poses an ongoing safety risk. I respectfully request that this issue be reviewed and that appropriate measures be considered to improve student safety, such as increased traffic enforcement, signage, sidewalk installation or pedestrian accommodations.</p> | Thank you for your time and attention to this important matter. |

Warwick SS4A
Appendix - Online Survey #1

| Where do you live in the Town? | What is your primary mode of transportation in the Town? | What transportation safety issues have you experienced in the Town of Warwick? | Other - What transportation safety issues have you experienced in the Town of Warwick? | What strategies would you like to see the Town of Warwick use to combat the transportation safety issues? | Please use this space to say more about your experiences on Warwick roads, specific locations where you feel unsafe, or feedback about the project. |
|--------------------------------|--|--|--|---|--|
| Village of Warwick | Automobile | Speeding, Pedestrian Safety, Commercial Traffic | | Enforcement, Education, Engineering | The speed limit in the Village of Warwick is 25 with the exception of 17A and 94. The enforcement of this is abysmal. I understand that the police department has tried to enforce speed limits and they can't be everywhere, but we need the drivers to understand their role in staying within the limit. I especially worry about the students walking on West Street from school into the village. They are at risk every day. |
| Village of Warwick | Automobile | other | Congestion due to tourists and more recently protests that clog sidewalks and crosswalks | Engineering, Education, Enforcement | Crosswalks that are lit on the road may help see where they are. |
| Village of Warwick | Walking | Lack of Pedestrian Infrastructure, Pedestrian Safety | | Engineering, Enforcement, Education | Vehicles almost never stop at the pedestrian crosswalk at Oakland & 3rd. We're often walking to the playground with children and are passed by 5-6 cars before anyone stops. A fair amount are speeding up on their way out of town so it feels pretty unsafe. |
| Village of Greenwood Lake | Automobile | Speeding, Pedestrian Safety, Commercial Traffic, other | Heavy truck load & traffic on streets not rated for the roads, tractor trailers on narrow roads or | Enforcement, Engineering, Education | Weight limits on community roads and highways |

Warwick SS4A
Appendix - Online Survey #1

| Where do you live in the Town? | What is your primary mode of transportation in the Town? | What transportation safety issues have you experienced in the Town of Warwick? | Other - What transportation safety issues have you experienced in the Town of Warwick? | What strategies would you like to see the Town of Warwick use to combat the transportation safety issues? | Please use this space to say more about your experiences on Warwick roads, specific locations where you feel unsafe, or feedback about the project. |
|--------------------------------|--|--|--|---|---|
| Village of Greenwood Lake | Automobile | Lack of Pedestrian Infrastructure | | Engineering, Enforcement, Education | I live in Lakes Rd. Still in the Village of Greenwood Lake and it is extremely difficult to walk to the American Legion without feeling a speeding car will hit me. Please add sidewalks. Sidewalks that go into the village-safely. Also a traffic sign that says signal whether you are going left (from the Village of GWL) toward Lakes Rd or right toward 17A. |
| Village of Warwick | Automobile | Speeding, Lack of Pedestrian Infrastructure, Pedestrian Safety | | Engineering, Education, Enforcement | Overall a serious review of infrastructure to promote traffic calming, pedestrian and cyclist safety is needed. However the intersection of Galloway Heights and South Street Ext. is of concern. Under normal circumstances it is difficult to get a clear view of northbound traffic traveling on S. St extension when at the stop sign on Galloway Heights. With the recent snow it has caused me to exit the neighborhood on Galloway Rd. A minor detour but worth avoiding a potentially dangerous intersection. |

Warwick SS4A
Appendix - Online Survey #1

| Where do you live in the Town? | What is your primary mode of transportation in the Town? | What transportation safety issues have you experienced in the Town of Warwick? | Other - What transportation safety issues have you experienced in the Town of Warwick? | What strategies would you like to see the Town of Warwick use to combat the transportation safety issues? | Please use this space to say more about your experiences on Warwick roads, specific locations where you feel unsafe, or feedback about the project. |
|--|--|---|--|---|--|
| Outside of the Villages but within the Town Limits | Automobile | Lack of Pedestrian Infrastructure, Commercial Traffic | | Enforcement, Engineering, Education | <p>Warwick streets should be made safe for Warwick residents. With the influx of out-of-towners who either do not know how to drive our back roads there should be targeted enforcement of the gateway roads (94/17A) leading into the village. This is almost certainly already the case, but I feel as though it can be advertised as a safety campaign that residents can get behind. I also feel as though there should be targeted enforcement of drivers failing to yield for pedestrians in the crosswalks across Main Street which is a common problem. In addition, The intersection of High, South, and Main Streets needs pedestrian crosswalks painted/signage.</p> <p>Finally, the general public has absolutely no regard for trespassing on private Railroad Right of Way and Village/Town sponsor events that, if anything, encourage it. At the very least, when scheduling large scale events like Applefest, Duck Derby, etc, someone should call the NYS&W Train Dispatcher at 607-547-2555 EXT 4.</p> |
| Village of Warwick | Automobile | Speeding, Lack of Pedestrian Infrastructure, Pedestrian Safety, Lack of Multi-Modal Transport | | Engineering, Enforcement, Education | I would love more sidewalks from locust into the village of Warwick. I would love a multi use trail/path for pedestrians and bikes to and from ShopRite/ price chopper |

Warwick SS4A
Appendix - Online Survey #1

| Where do you live in the Town? | What is your primary mode of transportation in the Town? | What transportation safety issues have you experienced in the Town of Warwick? | Other - What transportation safety issues have you experienced in the Town of Warwick? | What strategies would you like to see the Town of Warwick use to combat the transportation safety issues? | Please use this space to say more about your experiences on Warwick roads, specific locations where you feel unsafe, or feedback about the project. |
|--|--|---|--|---|---|
| Village of Warwick | Automobile | Speeding,Lack of Pedestrian Infrastructure,Pedestrian Safety,Commercial Traffic,Lack of Multi-Modal Transport | | Enforcement, Education, Engineering | More crosswalks and tickets to Jay walkers and cars that do not stop for pedestrians in crosswalks. |
| Village of Greenwood Lake | Automobile | Speeding,Crashes,Lack of Pedestrian Infrastructure,Pedestrian Safety,Commercial Traffic,Lack of Multi-Modal Transport | | Engineering, Enforcement, Education | |
| Outside of the Villages but within the Town Limits | Automobile | Speeding,Pedestrian Safety | | Engineering, Education, Enforcement | Was unable to rank strategies. My ranking is 1,3,2. |
| Outside of the Villages but within the Town Limits | Automobile | Speeding,Crashes,Lack of Pedestrian Infrastructure,Commercial Traffic,Lack of Multi-Modal Transport | | Enforcement, Engineering, Education | The number of times I've been passed on double yellow stretches of 17A and Lakes Road is absolutely ridiculous. The Town of Warwick, and Village of Greenwood Lake Police Departments needs to put an emphasis on these dangerous idiots. Also, during the summer, Lakes Road turns into a racetrack for motorcycles. Finally, dirt bikes and quads that are not road legal are a regular occurrence on Nelson Road where I live. |

Warwick SS4A
Appendix - Online Survey #1

| Where do you live in the Town? | What is your primary mode of transportation in the Town? | What transportation safety issues have you experienced in the Town of Warwick? | Other - What transportation safety issues have you experienced in the Town of Warwick? | What strategies would you like to see the Town of Warwick use to combat the transportation safety issues? | Please use this space to say more about your experiences on Warwick roads, specific locations where you feel unsafe, or feedback about the project. |
|--------------------------------|--|---|--|---|--|
| Village of Greenwood Lake | Automobile | Speeding,Lack of Pedestrian Infrastructure,Pedestrian Safety,Commercial Traffic | | Engineering, Enforcement, Education | <p>Speeding in neighborhoods, specifically where I live in the shore drive, meadow Ave, forest dr area. We've had many near miss accidents at the stop signs as well as almost being hit by speeding vehicles multiple times while walking our dogs. We have many kids who play, ride bikes and walk their own dogs. Shore drive is a narrow straight away which tends to exacerbate the speeding issue. We would absolutely love to have a speed bump to fix this issue and possibly stop a tragedy in the future.</p> <p>Another recommendation would be sidewalks that continue around teneyck, sterling, waterstone, and the minturn bridge. It would be great to have sidewalks that connect around the arm of the lake.</p> <p>Another thing I think would be great would be updated speed limit signs, street signs and stop signs. In the village many signs are dilapidated, crooked and overgrown. I don't think education campaigns would be worth the money spent, as new or improved signage around the village would be more beneficial.</p> |

Warwick SS4A
Appendix - Online Survey #1

| Where do you live in the Town? | What is your primary mode of transportation in the Town? | What transportation safety issues have you experienced in the Town of Warwick? | Other - What transportation safety issues have you experienced in the Town of Warwick? | What strategies would you like to see the Town of Warwick use to combat the transportation safety issues? | Please use this space to say more about your experiences on Warwick roads, specific locations where you feel unsafe, or feedback about the project. |
|--|--|--|--|---|---|
| Outside of the Villages but within the Town Limits | Automobile | Crashes,Commercial Traffic,other | Illegal passing/crossing double yellow to pass on main road outside of the villages. | Education, Enforcement, Engineering | Rural roads need attention too not just the villages. When you cross the border on 94 into NJ the difference between how our state deals with night time travel is vastly different. Even a county road like 515 in NJ going toward Amity... As soon as you cross the border into NY it's abysmal in comparison. Lowering the speed limit on rural roads is only a solution if you don't do anything to make it safer...NJ proves this by taking safety seriously. Please learn from them. I'm not complaining about current conditions but they could be brought up to a better standard. You don't have to look far to see what can be done. With a large elderly population in our area we should take seriously that as we age vision suffers; that being said night time hazards should be better addressed. Please contact me if you want any more input. |
| Village of Warwick | Automobile | Speeding,other | Going thru stop signs and making illegal turns | Enforcement, Education, Engineering | People don't care, they drive thru stop signs, race thru red lights, turn at no turn on red red lights, don't yield to oncoming traffic. |
| Outside of the Villages but within the Town Limits | Automobile | Speeding,Commercial Traffic | | Enforcement, Engineering, Education | |
| Outside of the Villages but within the Town Limits | Automobile | Speeding | | Enforcement, Engineering, Education | I'd recommend a school zone flashing sign on both ends of the school zone along Route 17 for Park Avenue Elementary. |

Warwick SS4A
Appendix - Online Survey #1

| Where do you live in the Town? | What is your primary mode of transportation in the Town? | What transportation safety issues have you experienced in the Town of Warwick? | Other - What transportation safety issues have you experienced in the Town of Warwick? | What strategies would you like to see the Town of Warwick use to combat the transportation safety issues? | Please use this space to say more about your experiences on Warwick roads, specific locations where you feel unsafe, or feedback about the project. |
|--|--|--|--|---|--|
| Village of Greenwood Lake | Automobile | Speeding,Lack of Pedestrian Infrastructure,Pedestrian Safety,other | School crosswalk issues in Greenwood Lake | Enforcement, Engineering, Education | I am crossing guard for Greenwood Lake elementary school. Intersection at Waterstone Road and Windermere Avenue is dangerous for children and parents. Needs desperately to be upgraded through signage and paint schemes but my understanding is nothing can be done because it's state road. Speed also a factor. Wish someone could visit with me to discuss these easy-fix issues. Only a matter of time before a child gets hurt. |
| Village of Warwick | Automobile | Crashes,Lack of Pedestrian Infrastructure,Pedestrian Safety | | Engineering, Enforcement, Education | It's difficult to cross the street on Main Street even with the cross walk signs. Many drivers not only don't stop but many don't slow down either. |
| Outside of the Villages but within the Town Limits | Automobile | Speeding,Lack of Pedestrian Infrastructure,other | No guardrails on East Shore Road in Greenwood Lake . It's a tragedy waiting to happen | Engineering, Education, Enforcement | Guardrail on East Shore Road , I slid off the road on black ice on East Shore Road, if it had been by the cliffs I would've landed in thr lake . School buses are on that road and there is no curb, let alone guard rails . Like I said , a tragedy waiting to happen |
| Outside of the Villages but within the Town Limits | Bicycle | Speeding,Lack of Multi-Modal Transport | | Enforcement, Engineering, Education | Insufficient shouldering for bicycling on State Road 17A between Tuxedo and Warwick. Same comment for State Road 210 along west shore of Greenwood lake. "Share the Road" signs might remind motorists that pedestrians and bicyclists may be on the roads. |

Warwick SS4A
Appendix - Online Survey #1

| Where do you live in the Town? | What is your primary mode of transportation in the Town? | What transportation safety issues have you experienced in the Town of Warwick? | Other - What transportation safety issues have you experienced in the Town of Warwick? | What strategies would you like to see the Town of Warwick use to combat the transportation safety issues? | Please use this space to say more about your experiences on Warwick roads, specific locations where you feel unsafe, or feedback about the project. |
|--------------------------------|--|--|---|---|--|
| Village of Warwick | Automobile | Lack of Pedestrian Infrastructure,other | Street lighting at crosswalks, night-time is most difficult to see pedestrians. Daytime, perhaps warning light of pedestrians crossing. I have personally experienced being on both sides, the walker & the driver. | Engineering, Education, Enforcement | Mainly in town where crosswalks are. Extra lighting, warning signs for pedestrians crossing. Time allowed for pedestrians who cannot cross as quickly as others. Drivers need reminding as well, as walkers need to use more caution. Pedestrians have the right away, but at times it's most difficult when one dashes out believing every driver will just stop on impulse. Then for the patient pedestrians waiting to cross, waiting for the next vehicle to stop for safe crossing, the driver doesn't always notice them no matter how slow. I personally drive slow in town & do my best to observe others, but I found that doesn't always cut safety for both drivers & pedestrians. It wouldn't hurt to also brighten up the whole area at night. I love driving/walking through town, but I also avoid it some days, which stops me from utilizing local shops. Parking with disabilities is another subject. |
| Village of Greenwood Lake | Automobile | Lack of Pedestrian Infrastructure,other | Even a thin pedestrian walkway along East Shore Rd would help. It is unsafe to walk to POBoxes in 10925. | Engineering, Education, Enforcement | |

Warwick SS4A
Appendix - Online Survey #1

| Where do you live in the Town? | What is your primary mode of transportation in the Town? | What transportation safety issues have you experienced in the Town of Warwick? | Other - What transportation safety issues have you experienced in the Town of Warwick? | What strategies would you like to see the Town of Warwick use to combat the transportation safety issues? | Please use this space to say more about your experiences on Warwick roads, specific locations where you feel unsafe, or feedback about the project. |
|--|--|--|--|---|--|
| Outside of the Villages but within the Town Limits | Automobile | other | Traffic at the Colonial/94 intersection | Engineering, Enforcement, Education | <p>I live on Crescent Ave, and the amount of speeding up and down the street is unbelievable. I don't allow my kids to play in the front yard or ride bikes, etc. b/c the driving is out of control. Plus, there are no sidewalks. For a residential neighborhood, it's very dangerous.</p> <p>The intersection of Grand & Crescent is also incredibly and increasingly problematic. I would say the majority of drivers barely stop/roll through the stop sign, and I've seen MANY accidents at that intersection. A police car is sometimes stopped on Crescent to monitor, but it definitely has not created lasting/impactful behavioral change.</p> |
| Village of Warwick | Automobile | Speeding | | Enforcement, Engineering, Education | |

Warwick SS4A
Appendix - Online Survey #1

| Where do you live in the Town? | What is your primary mode of transportation in the Town? | What transportation safety issues have you experienced in the Town of Warwick? | Other - What transportation safety issues have you experienced in the Town of Warwick? | What strategies would you like to see the Town of Warwick use to combat the transportation safety issues? | Please use this space to say more about your experiences on Warwick roads, specific locations where you feel unsafe, or feedback about the project. |
|--|--|---|--|---|--|
| Village of Warwick | Walking | Speeding,Lack of Pedestrian Infrastructure,Pedestrian Safety,Commercial Traffic | | Enforcement, Engineering, Education | In my walks about town I have noticed that a lot of drivers do not pay attention- they simply keep going in crosswalks, I think flashing lights at crosswalks would be beneficial- I also think that a lot of the signage is just ignored prime examples are no left turn coming off wheeler ave, no left turn on to main coming off south street, the 4 way stop sign at south and third that people just blaze thru, the one way on mcewen between main and spring- people act as if wherever they are headed to is more important than the life of the person who is walking or driving around them |
| Outside of the Villages but within the Town Limits | Automobile | Speeding,Commercial Traffic,other | Pot holes | Engineering, Enforcement, Education | The county roads in Pine Island are driven regularly at very unsafe speeds with numerous crashes and fatalities on Glenwood Rd. People think the flats are drag straps. I would love the see the speed lowered. |
| Outside of the Villages but within the Town Limits | Automobile | Speeding | | Education, Engineering, Enforcement | |
| Village of Warwick | Automobile | Speeding,Commercial Traffic,other | Pedestrians not following rules of being in crosswalks or at the West Street/Main Street intersection pedestrians ignoring walk/dont walk signs. | Education, Engineering, Enforcement | |

Warwick SS4A
Appendix - Online Survey #1

| Where do you live in the Town? | What is your primary mode of transportation in the Town? | What transportation safety issues have you experienced in the Town of Warwick? | Other - What transportation safety issues have you experienced in the Town of Warwick? | What strategies would you like to see the Town of Warwick use to combat the transportation safety issues? | Please use this space to say more about your experiences on Warwick roads, specific locations where you feel unsafe, or feedback about the project. |
|--|--|--|--|---|--|
| Outside of the Villages but within the Town Limits | Automobile | Speeding,Lack of Pedestrian Infrastructure,Lack of Multi-Modal Transport | | Engineering, Enforcement, Education | |
| Village of Warwick | Automobile | Lack of Pedestrian Infrastructure | | Engineering, Education, Enforcement | We need more sidewalks to connect outer parts of the village to the 'village' It's 100% unsafe for me to walk from the complex at Galloway grill to Stanley Deming park with a child or a stroller and I can't believe that there's no sidewalk along Galloway Rd |
| Outside of the Villages but within the Town Limits | Automobile | Lack of Pedestrian Infrastructure,Pedestrian Safety,Commercial Traffic,Lack of Multi-Modal Transport | | Engineering, Education, Enforcement | |
| Village of Greenwood Lake | Automobile | Speeding,Lack of Pedestrian Infrastructure,Pedestrian Safety | | Engineering, Enforcement, Education | I live on the corner of Ten Eyke and Sterling Road. Cars drive way too fast on this road that a lot of pedestrians, especially children, use to walk around the upper arm, to and from Dunkin and the Ice-cream store. We need a number of speed bumps to slow drivers down, especially summer drivers, who are not aware of the amount of public use. I would also like to see a continuous sidewalk around the upper arm of the lake are it is an incredibly popular for residents to walk on a year round bases. It would be much safer for everyone to install a curb for walkers. |

Warwick SS4A
Appendix - Online Survey #1

| Where do you live in the Town? | What is your primary mode of transportation in the Town? | What transportation safety issues have you experienced in the Town of Warwick? | Other - What transportation safety issues have you experienced in the Town of Warwick? | What strategies would you like to see the Town of Warwick use to combat the transportation safety issues? | Please use this space to say more about your experiences on Warwick roads, specific locations where you feel unsafe, or feedback about the project. |
|--|--|--|--|---|---|
| Village of Warwick | Automobile | Lack of Pedestrian Infrastructure | | Engineering, Education, Enforcement | Sidewalks along west street are in disrepair. Extend sidewalks to high school for student safety. This is a great walking town more sidewalks and fixing sidewalks i believe would reduce cars on road improving safety even more |
| Outside of the Villages but within the Town Limits | Automobile | Speeding, Commercial Traffic | | Enforcement, Education, Engineering | So much speeding and dangerous driving |
| Outside of the Villages but within the Town Limits | Automobile | Speeding, Lack of Multi-Modal Transport | | Enforcement, Education, Engineering | We live on little Brooklyn where the speed is 30 and people traveling to get to little York are speeding. As well as the issue of drunk drivers from the winery. We can't have our children play even in the front yards during the summer and fall never mind bikes. |
| Village of Florida | Automobile | Speeding, Lack of Pedestrian Infrastructure | | Engineering, Education, Enforcement | Sidewalks in Florida are only on one side and stop at cedarcrest. Speeding entering Florida from Warwick. |
| Outside of the Villages but within the Town Limits | Automobile | other | | Engineering, Enforcement, Education | Wheeler Road Town of Warwick in Hunt Drive area is washing away. There is an area that literally is about 4' wide that the road is gone. Entrance and exit to Webster Bank Edward Lempka Dr. could use a traffic light. |
| Village of Warwick | Automobile | Lack of Pedestrian Infrastructure | | Engineering, Education, Enforcement | |
| Outside of the Villages but within the Town Limits | Automobile | Speeding, Lack of Pedestrian Infrastructure | | Engineering, Education, Enforcement | West street from schools to town. More sidewalks needed for the safety of students walking. There are some sidewalks but not the entire way to town. |

Warwick SS4A
Appendix - Online Survey #1

| Where do you live in the Town? | What is your primary mode of transportation in the Town? | What transportation safety issues have you experienced in the Town of Warwick? | Other - What transportation safety issues have you experienced in the Town of Warwick? | What strategies would you like to see the Town of Warwick use to combat the transportation safety issues? | Please use this space to say more about your experiences on Warwick roads, specific locations where you feel unsafe, or feedback about the project. |
|--|--|--|--|---|---|
| Village of Warwick | Automobile | Speeding, Lack of Pedestrian Infrastructure, Commercial Traffic | | Engineering, Education, Enforcement | Too many roads have poor sight distance at intersections and roads are too narrow with sharp curves. Lower Wisner Road should be widened and straightened to provide a safe bypass of the Village particularly during Applefest. 17A intersections at Kain, Cascade, and Iron Forge Roads are needlessly dangerous. |
| Outside of the Villages but within the Town Limits | Automobile | Speeding, Crashes, Lack of Pedestrian Infrastructure, Pedestrian Safety | | Enforcement, Engineering, Education | The crosswalk at the entrance by cvs needs to be visible. When you're traveling from Shop Rite on 94, if someone is crossing in front of the insurance building, you can get hit. I've been almost hit, numerous times! Kids crossing from after school activities are basically playing a game of chicken trying to cross. |
| Village of Greenwood Lake | Automobile | Commercial Traffic | | Engineering, Enforcement, Education | difficult to make left from stop sign especially during rush hour from 4 pm until 6 pm and during apple picking season. |

Warwick SS4A
Appendix - Online Survey #1

| Where do you live in the Town? | What is your primary mode of transportation in the Town? | What transportation safety issues have you experienced in the Town of Warwick? | Other - What transportation safety issues have you experienced in the Town of Warwick? | What strategies would you like to see the Town of Warwick use to combat the transportation safety issues? | Please use this space to say more about your experiences on Warwick roads, specific locations where you feel unsafe, or feedback about the project. |
|--|--|--|--|---|--|
| Outside of the Villages but within the Town Limits | Automobile | Speeding, Pedestrian Safety, Commercial Traffic | | Enforcement, Engineering, Education | <p>Dekay is used as a short-cut from 94 to Cty 1. I cannot tell you the speeds that pass our home. Our cat was hit/killed and no one stopped. Thankfully was not our kids. We live in an old farmhouse, close to the road. As much as I would love to send my kids down the road on their bikes, I don't feel comfortable without supervision. The high school athletes use various routes around our home for warm up runs. At times they have a car follow the group with hazards, but many times they don't. We are in area where many walk/run/bike. Enforcement sits on the same 5 spots in town, neglecting everything else. I don't get it. There is no Enforcement. No accountability. It seems like a pretty easy fix. Be random. That alone will put people on notice. Worst times are after-school...also early morning/late evenings....</p> |
| Village of Warwick | Automobile | No Concerns or Issues | | Education, Engineering, Enforcement | No experiences. All good |

Warwick SS4A
Appendix - Online Survey #1

| Where do you live in the Town? | What is your primary mode of transportation in the Town? | What transportation safety issues have you experienced in the Town of Warwick? | Other - What transportation safety issues have you experienced in the Town of Warwick? | What strategies would you like to see the Town of Warwick use to combat the transportation safety issues? | Please use this space to say more about your experiences on Warwick roads, specific locations where you feel unsafe, or feedback about the project. |
|--|--|---|--|---|--|
| Outside of the Villages but within the Town Limits | Automobile | Speeding,Lack of Pedestrian Infrastructure,Pedestrian Safety,Lack of Multi-Modal Transport | | Engineering, Enforcement, Education | Excessive speed is the underlying problem to many issues. However, I'm surprised by the continued lack of sidewalks, bike lanes, or even shoulders on the roads throughout the village and town of Warwick. Artwork in key areas to address poor driving habits is a nice idea, but I doubt it will have much effect on the drivers. The entirety of Cascade Road is a perfect example. Speeding is a big problem and there isn't so much as a shoulder to help pedestrians, cyclists, or safe drivers a small area to swerve in order to help avoid disaster. Turning in either direction from Cascade Rd to 17a is treacherous and has become an exercise in patience and prayer. A more proactive approach to safer pedestrian and bicycle infrastructure seems to be a key, and long overdue, component of safer roads for everyone. |
| Village of Greenwood Lake | Automobile | Speeding,Lack of Pedestrian Infrastructure,Pedestrian Safety,Commercial Traffic,Lack of Multi-Modal Transport | | Enforcement, Engineering, Education | Jersey Ave, 30 mph zone, straight section from cascade to breezy is very fast traffic. Especially heavy trucks at 6 to 8 AM |
| Village of Greenwood Lake | Automobile | Speeding,Pedestrian Safety | | Enforcement, Engineering, Education | The crosswalks in the village of Greenwood lake are ignored by most drivers |

Warwick SS4A
Appendix - Online Survey #1

| Where do you live in the Town? | What is your primary mode of transportation in the Town? | What transportation safety issues have you experienced in the Town of Warwick? | Other - What transportation safety issues have you experienced in the Town of Warwick? | What strategies would you like to see the Town of Warwick use to combat the transportation safety issues? | Please use this space to say more about your experiences on Warwick roads, specific locations where you feel unsafe, or feedback about the project. |
|--|--|--|--|---|--|
| Village of Warwick | Automobile | other | Too much volume for the present infrastructure. | Engineering, Education, Enforcement | 66 Southern Ln. As our population has grown and we have increased Warwick visitor appeal my simple commute from Florida to the village is as aggravating as was my drive to Rockland county every day for 20 years |
| Village of Warwick | Automobile | Pedestrian Safety | | Engineering, Enforcement, Education | South Street at Main Street 3 way intersection is so dangerous for drivers and pedestrians. |
| Outside of the Villages but within the Town Limits | Automobile | Speeding, Commercial Traffic, other | Running red lights, passing on a double yellow line | Enforcement, Engineering, Education | <p>*Colonial Ave and Main St intersection needs a clearly defined signage and road marking for left turns onto Main St as vehicles use oncoming car lane from Maple as a turning lane.</p> <p>*congestion from Forester turning onto Colonial either direction</p> <p>* Halogen headlights are blinding</p> <p>*Landscapers and delivery vehicles pull over on hilltop and curves making oncoming visibility nil</p> |
| Outside of the Villages but within the Town Limits | Automobile | Speeding, other | Drivers slow speed on kings highway for many speed changes | Engineering, Education, Enforcement | One speed from sugarloaf to village of Warwick |

Warwick SS4A
Appendix - Online Survey #1

| Where do you live in the Town? | What is your primary mode of transportation in the Town? | What transportation safety issues have you experienced in the Town of Warwick? | Other - What transportation safety issues have you experienced in the Town of Warwick? | What strategies would you like to see the Town of Warwick use to combat the transportation safety issues? | Please use this space to say more about your experiences on Warwick roads, specific locations where you feel unsafe, or feedback about the project. |
|--|--|--|---|---|--|
| Outside of the Villages but within the Town Limits | Automobile | Speeding, other | Cars not driving the speed limit. People drive 10-20 miles below the limit on Kings Highway, there are too many changes in speed on that road between Sugar Loaf and the Village of Warwick | Engineering, Education, Enforcement | The roads are in absolute shambles. Driving through the village of Warwick especially between Railroad Ave and the Country Club is like driving on the surface of the moon, as is 17A going in to Florida. |
| Outside of the Villages but within the Town Limits | Automobile | Speeding, Commercial Traffic | | Enforcement, Engineering, Education | |
| Outside of the Villages but within the Town Limits | Automobile | Speeding | | Enforcement, Education, Engineering | 40 mph is too fast to travel with the blind driveways and roads coming onto E Shore. My entrance road - Shore Avenue - has almost no sight distance up E Shore to the north making it extremely dangerous to pull out of. |

Warwick SS4A
Appendix - Online Survey #1

| Where do you live in the Town? | What is your primary mode of transportation in the Town? | What transportation safety issues have you experienced in the Town of Warwick? | Other - What transportation safety issues have you experienced in the Town of Warwick? | What strategies would you like to see the Town of Warwick use to combat the transportation safety issues? | Please use this space to say more about your experiences on Warwick roads, specific locations where you feel unsafe, or feedback about the project. |
|--------------------------------|--|--|---|---|--|
| Village of Greenwood Lake | Automobile | Speeding, other | dangerous and aggressive driving on 17A and rt 94 to 17A and Orange turnpike in tuxedo. | Enforcement, Education, Engineering | <p>Motor vehicle operators acting in aggressive and dangerous driving maneuvers from 17a and route 94 in warwick to 17a and orange turnpike in tuxedo ny. I observe this on a daily basis during daily morning and evening commutes. Route 17A from greenwood lake over mountain to 17a and orange turnpike in Tuxedo the road is generally is poor condition and not maintained by the state in addition to poor vehicle operators acting in a reckless manner. This are of 17a full of potholes that force operators into other oncoming lane of traffic to avoid vehicle damage in blind curves where oncoming traffic is speeding also on a daily basis. I would not be opposed to speed camera enforcement throughout this stretch of roadway. There's a permanent record of myself calling into warwick and greenwood lake police departments about incidents I have encountered over the years.</p> |

Warwick SS4A
Appendix - Online Survey #1

| Where do you live in the Town? | What is your primary mode of transportation in the Town? | What transportation safety issues have you experienced in the Town of Warwick? | Other - What transportation safety issues have you experienced in the Town of Warwick? | What strategies would you like to see the Town of Warwick use to combat the transportation safety issues? | Please use this space to say more about your experiences on Warwick roads, specific locations where you feel unsafe, or feedback about the project. |
|--|--|--|--|---|---|
| Outside of the Villages but within the Town Limits | Automobile | other | Lack of safety for motorists along a road with no guardrail | Engineering, Enforcement, Education | The stretch of road along East Shore Rd in the town of Warwick in Greenwood Lake is hazardous with no safety measures to prevent a car falling into the lake should there be an accident. There are spots where the road meets the lip of the concrete curb, no difference in height. In the warmer months, weeds hide the curb all together. It's a tight squeeze in this section, especially when ice forms on the opposite rock wall as well as when passing a truck or school bus. People are always walking along this stretch of road as well, adding to the safety hazard. A guardrail would benefit this stretch of road. |
| Outside of the Villages but within the Town Limits | Automobile | Lack of Pedestrian Infrastructure | | Engineering, Education, Enforcement | Bellvale Dairy needs a stop light! |

Warwick SS4A
Appendix - Online Survey #1

| Where do you live in the Town? | What is your primary mode of transportation in the Town? | What transportation safety issues have you experienced in the Town of Warwick? | Other - What transportation safety issues have you experienced in the Town of Warwick? | What strategies would you like to see the Town of Warwick use to combat the transportation safety issues? | Please use this space to say more about your experiences on Warwick roads, specific locations where you feel unsafe, or feedback about the project. |
|--|--|---|--|---|---|
| Village of Greenwood Lake | Automobile | Lack of Pedestrian Infrastructure, Pedestrian Safety, Lack of Multi-Modal Transport | | Engineering, Enforcement, Education | Residents of the Village of Greenwood Lake should be able to safely walk or ride bikes around the lake that defines our community, yet the absence of safe walking paths or bike lanes along Route 17 and Teneyck/Stirling makes this difficult and often unsafe. Many residents and visitors would love the option to bike safely to local destinations like Cove Castle or D'Boathaus, but current road conditions discourage exactly the kind of healthy, outdoor activity a lake community should promote. Encouraging walking and cycling supports public health, reduces traffic, and strengthens community connection, so we need to be creative and collaborative in developing solutions that make safe, lake-wide pedestrian and bike access a reality. |
| Outside of the Villages but within the Town Limits | Automobile | Speeding, Pedestrian Safety, Commercial Traffic | | Enforcement, Engineering, Education | |
| Village of Florida | Automobile | Speeding, Commercial Traffic, other | Way too much 18 wheeler commercial traffic | Enforcement, Engineering, Education | South Main Street in Florida. A lot of excessive speeding. |
| Outside of the Villages but within the Town Limits | Automobile | Commercial Traffic | | Enforcement, Education, Engineering | |

Warwick SS4A
Appendix - Online Survey #1

| Where do you live in the Town? | What is your primary mode of transportation in the Town? | What transportation safety issues have you experienced in the Town of Warwick? | Other - What transportation safety issues have you experienced in the Town of Warwick? | What strategies would you like to see the Town of Warwick use to combat the transportation safety issues? | Please use this space to say more about your experiences on Warwick roads, specific locations where you feel unsafe, or feedback about the project. |
|--------------------------------|--|--|--|---|---|
| Outside of the Town limits | Automobile | Pedestrian Safety, Commercial Traffic | | Engineering, Enforcement, Education | 1. Commercial traffic on 94 through the retail section is too fast and large heavy vehicles are too wide, drive too fast, dangerously hitting road imperfections. 2. Drivers making turns are too distracted by uncontrolled traffic and do not look for pedestrians. I have had several close calls @94 and South St intersection. 3. Heavy traffic backups at busiest times cause impatient drivers to recklessly turn/merge into uncontrolled intersections. |

Warwick SS4A
Appendix - Online Survey #1

| Where do you live in the Town? | What is your primary mode of transportation in the Town? | What transportation safety issues have you experienced in the Town of Warwick? | Other - What transportation safety issues have you experienced in the Town of Warwick? | What strategies would you like to see the Town of Warwick use to combat the transportation safety issues? | Please use this space to say more about your experiences on Warwick roads, specific locations where you feel unsafe, or feedback about the project. |
|--|--|--|--|---|---|
| Outside of the Villages but within the Town Limits | Automobile | Speeding, Lack of Pedestrian Infrastructure | | Enforcement, Engineering, Education | <p>1. Kids walking to and from school should be encouraged, but West Street is a disaster for pedestrians, especially children. Having a continuous sidewalk would help tremendously.</p> <p>2. The cross walk at West & Main is always confusing for pedestrians... perhaps an audible "walk" signal would help.</p> <p>3. HS students at dismissal drive recklessly. Yikes!</p> <p>4. The stop sign on Forrester near the library has caused so many near crashes when people have to turn left off of Forrester into the library...opposing traffic does not always expect them to make the turn without stopping.</p> <p>5. Clearer signage needs to be placed (or enforced!) about no left/right turns onto Main. (eg: CVS lot, High St, etc)</p> <p>6. For a positive - snow removal in the village along Main is excellent. Also really appreciate the holiday free parking. Finally, nobody likes getting a parking ticket, but the attendant does a really good job and keeps things on the up and up.</p> |

Warwick SS4A
Appendix - Online Survey #1

| Where do you live in the Town? | What is your primary mode of transportation in the Town? | What transportation safety issues have you experienced in the Town of Warwick? | Other - What transportation safety issues have you experienced in the Town of Warwick? | What strategies would you like to see the Town of Warwick use to combat the transportation safety issues? | Please use this space to say more about your experiences on Warwick roads, specific locations where you feel unsafe, or feedback about the project. |
|--|--|---|---|---|---|
| Village of Florida | Walking | Speeding,Lack of Pedestrian Infrastructure,Pedestrian Safety,Commercial Traffic | | Enforcement, Engineering, Education | |
| Outside of the Villages but within the Town Limits | Automobile | Speeding,Lack of Pedestrian Infrastructure,Commercial Traffic,Lack of Multi-Modal Transport | | Engineering, Enforcement, Education | |
| Outside of the Villages but within the Town Limits | Automobile | Speeding,other | Cars passing in non passing zones, Cascade Road on the straight away, and also on Upper Wisner Road | Enforcement, Education, Engineering | Thank you! In addition to the known speeding and passing issue on Cascade Road, another tricky area is State School road inside Wickham Woodlands. The speed limit is 15 mph as it is a beautiful spot to walk, but regularly drivers completely disregard the limit and also the stop signs in the park. When parents are going to pick up their kids from Hudson Sports Complex, or leaving an event, they blow through the 3 way stop sign by the entrance. Also when the new businesses employees end their work day, they blow through the stop sign on John Hicks drive. And sometimes we have seen cars driving the wrong way on the one way road inside the park. |

Warwick SS4A
Appendix - Online Survey #1

| Where do you live in the Town? | What is your primary mode of transportation in the Town? | What transportation safety issues have you experienced in the Town of Warwick? | Other - What transportation safety issues have you experienced in the Town of Warwick? | What strategies would you like to see the Town of Warwick use to combat the transportation safety issues? | Please use this space to say more about your experiences on Warwick roads, specific locations where you feel unsafe, or feedback about the project. |
|--|--|--|--|---|--|
| Outside of the Villages but within the Town Limits | Automobile | Speeding | | Enforcement, Education, Engineering | The specif location that I present above poses a big issues for most drivers when making the left onto pine Island Turnpike from jessup Rd. This is a blind turn and typically the cars coming from the right are going very fast. This turn is so dangerous that my daughter's bus had to change the route from making the original left to now having to turn right. I would like to see the speed limit reduced along with flashing yellow lights for the drivers. |
| Village of Warwick | Walking | Speeding,Lack of Pedestrian Infrastructure,Pedestrian Safety,Lack of Multi-Modal Transport | | Engineering, Enforcement, Education | The lack of maintained sidewalks and lack of sidewalks period makes it very difficult to walk in this town. The intersection of high street and Main Street is incredibly dangerous for pedestrian traffic as cars do not look for pedestrians crossing the road and they will actually speed up. In addition, just outside of franks pizza there are a large amount of trucks that park and block the first half of the crosswalk to cross the street to the entrance of CVS. I have personally almost been hit twice from cars not adhering to the crossing laws. It is dangerous. |
| Outside of the Villages but within the Town Limits | Automobile | Crashes,Lack of Pedestrian Infrastructure,Pedestrian Safety,Lack of Multi-Modal Transport | | Engineering, Education, Enforcement | Corner pennings In /rt 94 |

Warwick SS4A
Appendix - Online Survey #1

| Where do you live in the Town? | What is your primary mode of transportation in the Town? | What transportation safety issues have you experienced in the Town of Warwick? | Other - What transportation safety issues have you experienced in the Town of Warwick? | What strategies would you like to see the Town of Warwick use to combat the transportation safety issues? | Please use this space to say more about your experiences on Warwick roads, specific locations where you feel unsafe, or feedback about the project. |
|--|--|--|---|---|--|
| Outside of the Villages but within the Town Limits | Automobile | other | - sometimes difficult to see pedestrians getting ready to cross in cross walks. - need a local taxi service desperately | Engineering, Education, Enforcement | |
| Village of Warwick | Automobile | Speeding, Pedestrian Safety, other | People not using cross walks in the village and walking out into oncoming traffic | Enforcement, Engineering, Education | Vehicles speed on West Street, especially at night. Large trucks coming in and out of the village. It's very noisy and disruptive to our community and can cause an accident with someone pulling out of a driveway. Pedestrians on Main Street often avoid using the cross walks and walk across the street when there is oncoming traffic. This is a horrible accident waiting to happen. |

Warwick SS4A
Appendix - Online Survey #1

| Where do you live in the Town? | What is your primary mode of transportation in the Town? | What transportation safety issues have you experienced in the Town of Warwick? | Other - What transportation safety issues have you experienced in the Town of Warwick? | What strategies would you like to see the Town of Warwick use to combat the transportation safety issues? | Please use this space to say more about your experiences on Warwick roads, specific locations where you feel unsafe, or feedback about the project. |
|--|--|---|---|---|--|
| Village of Warwick | Automobile | Speeding, Commercial Traffic, other | Pedestrian stepping into crosswalks in front of cars not giving cars enough time to react and stop, and then pedestrians yelling, swearing , making obscene gestures to cars for not stopping. And ..bullying aggressive driving. | Enforcement, Engineering, Education | Drivers to and from pine island direction on county route 1 drive much to fast and can be aggressive and bullying, especially large vehicles like pickup trucks. Same for stretch of road from Warwick village to florida village. Drivers know where police tend to hide and are using apps like waze to tag them and avoid being caught. Commute in morning from Warwick village into Greenwood lake and then into tuxedo is very stressful due to speeding and tailgating. Drivers also speed through school zone in morning at Park Ave school. Sometimes right in front of police with no reaction. |
| Outside of the Villages but within the Town Limits | Automobile | Speeding, Lack of Pedestrian Infrastructure, Pedestrian Safety, Lack of Multi-Modal Transport | | Engineering, Enforcement, Education | |
| Village of Warwick | Automobile | Lack of Multi-Modal Transport | | Engineering, Education, Enforcement | The corner on Burt Street into Park Place is dangerous. People also walk there and no sidewalks. |

Warwick SS4A
Appendix - Online Survey #1

| Where do you live in the Town? | What is your primary mode of transportation in the Town? | What transportation safety issues have you experienced in the Town of Warwick? | Other - What transportation safety issues have you experienced in the Town of Warwick? | What strategies would you like to see the Town of Warwick use to combat the transportation safety issues? | Please use this space to say more about your experiences on Warwick roads, specific locations where you feel unsafe, or feedback about the project. |
|--|--|--|--|---|---|
| Outside of the Villages but within the Town Limits | Automobile | Speeding,Lack of Pedestrian Infrastructure,Pedestrian Safety,Commercial Traffic | | Engineering, Enforcement, Education | <p>The Village of Warwick can be treacherous! Even in front of Village Hall you can hardly cross the road safely. I've seen MANY times where a PO is right there but this still doesn't deter the drivers.</p> <p>I find the drivers of the oversize pickup trucks to be very aggressive. I cannot tell you because I have lost count how many times I am passed on double lines going over the mountains between Warwick, Greenwood Lake, and Tuxedo. I don't know what can be done about that. Not everyone is as comfortable in snow or other weather conditions, and their aggression feels almost like rage, all because I am driving the speed limit. It's really disturbing.</p> |
| Village of Greenwood Lake | Automobile | Speeding,Lack of Pedestrian Infrastructure,Pedestrian Safety,Lack of Multi-Modal Transport | | Engineering, Enforcement, Education | Waterstone rd ,NO SIDEWALKS installed for lack of funding. From gazebo to town main st. Cars speeding ..no enforcement..speed sign indicators should be installed. |

Warwick SS4A
Appendix - Online Survey #1

| Where do you live in the Town? | What is your primary mode of transportation in the Town? | What transportation safety issues have you experienced in the Town of Warwick? | Other - What transportation safety issues have you experienced in the Town of Warwick? | What strategies would you like to see the Town of Warwick use to combat the transportation safety issues? | Please use this space to say more about your experiences on Warwick roads, specific locations where you feel unsafe, or feedback about the project. |
|--|--|--|--|---|---|
| Village of Greenwood Lake | Automobile | Speeding,Lack of Pedestrian Infrastructure,Pedestrian Safety | | Engineering, Enforcement, Education | <p>Speeding and aggressive driving, especially tailgating, are my biggest safety concerns in the village. Many roads offer no safe place to pull over, and there is not enough visible police presence to deter this behavior. As a result, drivers frequently speed and intimidate others with little consequence. Stronger enforcement and higher fines are needed to hold drivers accountable and change this pattern.</p> <p>Speed bumps should be installed near schools and busy crossroads to force drivers to slow down, particularly near the entrances to Routes 17A and 17M and along Jersey Avenue by the library. Children regularly walk these roads to reach places like Dunkin’ Donuts and the Library, yet vehicles often travel at unsafe speeds. Addressing these issues would significantly improve pedestrian safety and overall quality of life in Greenwood Lake</p> |
| Outside of the Villages but within the Town Limits | Automobile | Lack of Pedestrian Infrastructure,Lack of Multi-Modal Transport | | Engineering, Education, Enforcement | <p>When I was a new mom, I couldn't even walk around town due to the sidewalks being unwalkable. Happy they are addressing these issues. Mass surveillance cameras such as Flock and Gridless Camera Systems will hopefully never be a thing in our town. No one wants constant eyes on them. Make that a last resort.. or not an option is even better.</p> |

Warwick SS4A
Appendix - Online Survey #1

| Where do you live in the Town? | What is your primary mode of transportation in the Town? | What transportation safety issues have you experienced in the Town of Warwick? | Other - What transportation safety issues have you experienced in the Town of Warwick? | What strategies would you like to see the Town of Warwick use to combat the transportation safety issues? | Please use this space to say more about your experiences on Warwick roads, specific locations where you feel unsafe, or feedback about the project. |
|--|--|---|--|---|---|
| Outside of the Villages but within the Town Limits | Automobile | Speeding,other | Aggressive driving including tailgating. | Enforcement, Education, Engineering | <p>I do not advocate the use of speed cameras. Our police department needs to get out and enforce these driving issues. Presently they are unseen and the drivers know this.</p> <p>Little York road is especially dangerous due to speeding vehicles not just on weekends but every day. The electronic sign on this road is a joke and waste of taxpayer money. Pulling out of my driveway is a crapshoot every day as to whether I get hit by a speeding car.</p> <p>This is not rocket science. Get out, be seen and the vehicles will slow down.</p> |
| Village of Florida | Automobile | Speeding,Lack of Pedestrian Infrastructure,Pedestrian Safety,Commercial Traffic | | Enforcement, Engineering, Education | |
| Village of Greenwood Lake | Automobile | Crashes | | Engineering, Enforcement, Education | Top of mountain near Balevale Creamery need some type of traffic light or warning system for intersection. Very dangerous. |
| Outside of the Villages but within the Town Limits | Automobile | Speeding,Lack of Pedestrian Infrastructure,Pedestrian Safety,Commercial Traffic | | Engineering, Education, Enforcement | Sidewalks needed on west street into the village |

Warwick SS4A
Appendix - Online Survey #1

| Where do you live in the Town? | What is your primary mode of transportation in the Town? | What transportation safety issues have you experienced in the Town of Warwick? | Other - What transportation safety issues have you experienced in the Town of Warwick? | What strategies would you like to see the Town of Warwick use to combat the transportation safety issues? | Please use this space to say more about your experiences on Warwick roads, specific locations where you feel unsafe, or feedback about the project. |
|--|--|---|--|---|--|
| Village of Greenwood Lake | Automobile | Speeding,Lack of Pedestrian Infrastructure,Pedestrian Safety,Commercial Traffic,Lack of Multi-Modal Transport | | Enforcement, Engineering, Education | |
| Village of Warwick | Automobile | Speeding,Crashes,Lack of Pedestrian Infrastructure,Pedestrian Safety | | Education, Engineering, Enforcement | Overall Orchard Street is very busy. Cars are constantly traveling on this street and there have been accidents and a lot of speeding. The Quick Mart creates additional problems with the entrance on Orchard as well as the planter that blocks the view of traffic from the left and the delivery trucks that block cars coming up Orchard. Now Noble Pies is open on the corner of Oakland and Orchard so cars park on the no parking side of Orchard which can be hazardous for anyone turning from Oakland as well as coming up Orchard. Can a no parking area be installed on the Noble Pies side of Orchard? Also speed bumps would really help. Thanks! |
| Village of Warwick | Automobile | Speeding,Pedestrian Safety,Commercial Traffic | | Enforcement, Engineering, Education | |
| Outside of the Villages but within the Town Limits | Automobile | Lack of Multi-Modal Transport | | Engineering, Education, Enforcement | Oakland Ave. Road Pavement so rough it could shred the tracks of a Sherman tank. |

Warwick SS4A
Appendix - Online Survey #1

| Where do you live in the Town? | What is your primary mode of transportation in the Town? | What transportation safety issues have you experienced in the Town of Warwick? | Other - What transportation safety issues have you experienced in the Town of Warwick? | What strategies would you like to see the Town of Warwick use to combat the transportation safety issues? | Please use this space to say more about your experiences on Warwick roads, specific locations where you feel unsafe, or feedback about the project. |
|--------------------------------|--|--|--|---|---|
| Village of Warwick | Automobile | Speeding,Lack of Pedestrian Infrastructure,Pedestrian Safety | | Engineering, Education, Enforcement | 159 West St The section between Pond Hill and Pulpit Rock needs a dedicated walking path (sidewalk) on one side for residents to pick up our mail and school children who regularly walk in groups along this most narrow stretch of West. St. |
| Village of Warwick | Automobile | Lack of Pedestrian Infrastructure,Lack of Multi-Modal Transport | | Engineering, Education, Enforcement | Many people in Warwick love to walk and bike throughout the village. However, the lack of consistent sidewalks makes it hard. Example is south street extension is dangerous to walk on but many people walk and bike on that road. |

Warwick SS4A
Appendix - Online Survey #1

| Where do you live in the Town? | What is your primary mode of transportation in the Town? | What transportation safety issues have you experienced in the Town of Warwick? | Other - What transportation safety issues have you experienced in the Town of Warwick? | What strategies would you like to see the Town of Warwick use to combat the transportation safety issues? | Please use this space to say more about your experiences on Warwick roads, specific locations where you feel unsafe, or feedback about the project. |
|--|--|--|--|---|--|
| Outside of the Villages but within the Town Limits | Automobile | Speeding, Crashes, Lack of Pedestrian Infrastructure, Pedestrian Safety | | Enforcement, Engineering, Education | <p>There is terrible road erosion on Bellvale Lakes Road. Some parts of the road are extremely narrow and hazardous when two cars pass each other. There are numerous potholes as well. This past fall, a crash occurred in front of our house due to a tire getting caught in the broken road causing the vehicle to land in a drainage ditch and hit a telephone pole. We had notified the town about this broken road condition prior to the accident. Furthermore, many vehicles are doing much more than 30 miles per hour as they come downhill past our driveway. We have invited the Warwick Police department to use radar from our driveway entrance to monitor speed. The road desperately needs to be repaired for cars, bicycles and pedestrians. Blacktop should be used instead of tar and chip as the edges quickly erode back. Please consider widening and repairing the road as soon as possible.</p> |

Warwick SS4A
Appendix - Online Survey #1

| Where do you live in the Town? | What is your primary mode of transportation in the Town? | What transportation safety issues have you experienced in the Town of Warwick? | Other - What transportation safety issues have you experienced in the Town of Warwick? | What strategies would you like to see the Town of Warwick use to combat the transportation safety issues? | Please use this space to say more about your experiences on Warwick roads, specific locations where you feel unsafe, or feedback about the project. |
|--|--|---|--|---|--|
| Outside of the Villages but within the Town Limits | Automobile | Speeding,Lack of Pedestrian Infrastructure,Pedestrian Safety,Commercial Traffic,Lack of Multi-Modal Transport | | Enforcement, Education, Engineering | <p>Did you ever try to bicycle ride on Covered Bridge Rd one way ,have a mom walking with a baby carriage going the other way and have a tractor trailer and car fit in between. . This is dangerous especially on a blind turn while riding on the Warwick loop. There are no yellow lines on the road let alone markers on the road for a bike path. While there are signs cars , trucks, oil tankers etc. don't slow down , not even school buses.</p> <p>There is a YIELD sign for the drivers on Onderdonk rd.,continuing onto Covered Bridge. Im not so sure people know the definition if you are coming down Coverd bridge and following the road left at the bottom of the hill, drivers do not YIELD. Ever!</p> <p>Please do not tail gate if I'm doing the speed limit.</p> <p>Covered Bridge is a by pass road for people coming from NJ to avoid the Rt. 94 Corridor. We have tractor trailer delivery trucks, huge trailers with commercial construction equipment. What is the weight limit on the Covered Bridge , Bridge? Thank you</p> |

Warwick SS4A
Appendix - Online Survey #1

| Where do you live in the Town? | What is your primary mode of transportation in the Town? | What transportation safety issues have you experienced in the Town of Warwick? | Other - What transportation safety issues have you experienced in the Town of Warwick? | What strategies would you like to see the Town of Warwick use to combat the transportation safety issues? | Please use this space to say more about your experiences on Warwick roads, specific locations where you feel unsafe, or feedback about the project. |
|--|--|---|--|---|---|
| Outside of the Villages but within the Town Limits | Automobile | Speeding,Lack of Pedestrian Infrastructure,Pedestrian Safety,Commercial Traffic,Lack of Multi-Modal Transport | | Enforcement, Education, Engineering | <p>It appears that everybody's in a rush, especially driving on back roads doing the speed limit and being tailgated by someone that's in a rush to go nowhere. Covered Bridge Road is being used more and more as a bypass around 94... With that being said, there are all sorts of vehicles that use this road and exceed the speed limit, out of state vehicles, box, trucks, dump trucks, landscaping, vehicles, construction trucks, tractor trailers. Dekay Road goes into covered Bridge Road with a stop sign, but hardly anybody ever stops at the stop sign. They continue on down the road exceeding the speed limit. Many walkers and runners use covered bridge as well as mom's pushing baby carriages and to see the vehicles not adhering to the speed limit. Even though they're signage for the "Warwick Loop" a bicycle trail, There doesn't seem to be any respect for someone riding a bicycle in this area. I understand that it is not easy to have police presence all the time but monitoring helps</p> |
| Village of Warwick | Automobile | other | DUI/Inebriated drivers around the breweries | Enforcement, Engineering, Education | <p>If you drive near Drowned Lands brewery on the weekends you consistently have to watch out for someone who's either driving under the influence or inebriated to some extent. In addition, people should not be able to make a left off of Forester onto Kings Highway.</p> |

Warwick SS4A
Appendix - Online Survey #1

| Where do you live in the Town? | What is your primary mode of transportation in the Town? | What transportation safety issues have you experienced in the Town of Warwick? | Other - What transportation safety issues have you experienced in the Town of Warwick? | What strategies would you like to see the Town of Warwick use to combat the transportation safety issues? | Please use this space to say more about your experiences on Warwick roads, specific locations where you feel unsafe, or feedback about the project. |
|--|--|---|--|---|---|
| Village of Warwick | Automobile | Speeding Speeding,Crashes,Lack of Pedestrian Infrastructure,Pedestrian Safety,Commercial Traffic,Lack of Multi-Modal Transport | | Enforcement, Engineering, Education | 62 the rise Sidewalks are lacking on Gallagher & Colonial |
| Outside of the Villages but within the Town Limits | Automobile | | | Education, Enforcement, Engineering | |

Warwick SS4A
Appendix - Online Survey #1

| Where do you live in the Town? | What is your primary mode of transportation in the Town? | What transportation safety issues have you experienced in the Town of Warwick? | Other - What transportation safety issues have you experienced in the Town of Warwick? | What strategies would you like to see the Town of Warwick use to combat the transportation safety issues? | Please use this space to say more about your experiences on Warwick roads, specific locations where you feel unsafe, or feedback about the project. |
|--|--|---|--|---|---|
| Village of Warwick | Automobile | Lack of Pedestrian Infrastructure, Pedestrian Safety, Commercial Traffic, Lack of Multi-Modal Transport | | Engineering, Enforcement, Education | <p>Since moving to the village of Warwick several years ago, I've been surprised and disappointed by how disruptive commercial traffic is to walking down our lovely Main Street. It's so bad that I don't even like to take my baby in a stroller down Main. Giant trucks speed past and are extremely loud. Semis, delivery vehicles, and tractor-trailers should be diverted from Main St. I would also like to see sidewalks connecting all villagers to downtown. We live on Locust St, which is only about a 15 min walk from downtown, and yet we can't safely walk there with our family because there are no sidewalks. Lastly, I think the intersection at Colonial and Main needs a roundabout to calm traffic. We all know it's impossible to safely turn from Forrester onto Colonial most times of day with the current light. And it goes without saying—Amazon delivery trucks seem to be exempt from traffic laws and constantly endanger other drivers by stopping in the middle of busy highways throughout the village.</p> |
| Outside of the Villages but within the Town Limits | Automobile | No Concerns or Issues | | Education, Engineering, Enforcement | Please do not spend money on these frivolous things. Taxes are too high. |
| Outside of the Villages but within the Town Limits | Automobile | Lack of Pedestrian Infrastructure, Lack of Multi-Modal Transport | | Engineering, Education, Enforcement | Roads are too narrow |

Warwick SS4A
Appendix - Online Survey #1

| Where do you live in the Town? | What is your primary mode of transportation in the Town? | What transportation safety issues have you experienced in the Town of Warwick? | Other - What transportation safety issues have you experienced in the Town of Warwick? | What strategies would you like to see the Town of Warwick use to combat the transportation safety issues? | Please use this space to say more about your experiences on Warwick roads, specific locations where you feel unsafe, or feedback about the project. |
|--|--|--|--|---|--|
| Outside of the Villages but within the Town Limits | Automobile | Lack of Pedestrian Infrastructure, other | Poor road conditions, e.g. potholes, poorly maintained shoulders | Engineering, Education, Enforcement | Generally, the roads in the Village and the Town of Warwick are safe for drivers but are lacking for pedestrians and bicyclists. |
| Village of Warwick | Automobile | Speeding, other | In snowy or wintry conditions, people do not respect conditions and drive too fast. Also, Lakes Road is not maintained quickly enough. | Enforcement, Education, Engineering | <p>It is a long 30 mph zone that allows for people to cruise and speed. Drivers, especially in larger trucks like F150s or Silverados, often speed. No one has ever been ticketed in the 15 years I've lived in the area. A speedometer was placed up the road, but in an area that isn't as conducive to speeding. Either stop signs at the intersections, or maybe another camera near this location, might help. Kids and dogs are always on this area.</p> <p>Also, just down the road at the intersection of Greenwood Ave and Old Dutch Hollow there are mailboxes for several homes. I've seen at least one bad accident and several near misses. The boxes should be moved to a safer location for both the residents and especially the postal workers.</p> |

Warwick SS4A
Appendix - Online Survey #1

| Where do you live in the Town? | What is your primary mode of transportation in the Town? | What transportation safety issues have you experienced in the Town of Warwick? | Other - What transportation safety issues have you experienced in the Town of Warwick? | What strategies would you like to see the Town of Warwick use to combat the transportation safety issues? | Please use this space to say more about your experiences on Warwick roads, specific locations where you feel unsafe, or feedback about the project. |
|--------------------------------|--|--|---|---|---|
| Village of Warwick | Automobile | other | Intersections which are unsafe; sidewalks which are not passable due to trash cans/recycling bins left out and ice/snow not cleared; snow cleared off sidewalk but not at corners connecting to road crossing or next sidewalk. | Engineering, Enforcement, Education | <p>Intersection of Spring St and West Street: when turning off of Spring onto West, poor visibility looking toward Main Street makes the turn unsafe. Cars speed from Main to Spring along West St. Need to lose parking spot closest to Halligans entrance to ensure clear line of sight, and provide cross-walks at intersection.</p> <p>Too much speeding on 94, in front of Pennings, making intersection at 94 and Warwick turnpike dangerous.</p> <p>Please extend sidewalk all the way from schools to village along West St. We're trying to make Warwick more walkable/bikeable, and kids more active and healthy, so let's make it safe for them to walk.</p> <p>Disallow tables and chairs on Main St sidewalks. Not enough space to pass, push strollers, hold hands of kids, carry shopping bags, walk with cane/walker, use wheelchair....Create a lovely tables, chairs, desirable, attractive, shaded, lingering spot elsewhere in the village. Good for business. Lewis Park? Historical lawn? Close/transform top of Welling Place?</p> |

Warwick SS4A
Appendix - Online Survey #1

| Where do you live in the Town? | What is your primary mode of transportation in the Town? | What transportation safety issues have you experienced in the Town of Warwick? | Other - What transportation safety issues have you experienced in the Town of Warwick? | What strategies would you like to see the Town of Warwick use to combat the transportation safety issues? | Please use this space to say more about your experiences on Warwick roads, specific locations where you feel unsafe, or feedback about the project. |
|--|--|---|--|---|--|
| Outside of the Villages but within the Town Limits | Automobile | Speeding,Lack of Pedestrian Infrastructure,Pedestrian Safety,Commercial Traffic,Lack of Multi-Modal Transport | | Enforcement, Education, Engineering | Wheeler Rd. Seniors walking in this area don't feel safe. I've had to jump on the bank to avoid being hit numerous times. Drivers don't slow down or give enough room to safely walk in my area. The roads need to be improved also |
| Village of Warwick | Automobile | Speeding,Lack of Pedestrian Infrastructure,Pedestrian Safety,Commercial Traffic,Lack of Multi-Modal Transport | | Enforcement, Engineering, Education | 3 Henry Close Courtesy and pedestrian consideration should be reinforced. Warwick is a lovely village to walk through, but lately rued and inconsiderate drivers are becoming more common. |
| Village of Warwick | Automobile | Speeding,Lack of Pedestrian Infrastructure,Pedestrian Safety,Lack of Multi-Modal Transport | | Engineering, Education, Enforcement | Would like a crosswalk near the post office so that when you are walking from Grand St to Main Street you can cross the street to get to the post office without having to walk further down Main St to get to the crosswalk at Wheeler and then backtrack to the post office. I know there is no cross street there but I have seen people cross Main Street in that area to get to the other side of the street, most often to get to the post office. |
| Outside of the Villages but within the Town Limits | Automobile | Speeding,Pedestrian Safety,Lack of Multi-Modal Transport | | Enforcement, Engineering, Education | |

Warwick SS4A
Appendix - Online Survey #1

| Where do you live in the Town? | What is your primary mode of transportation in the Town? | What transportation safety issues have you experienced in the Town of Warwick? | Other - What transportation safety issues have you experienced in the Town of Warwick? | What strategies would you like to see the Town of Warwick use to combat the transportation safety issues? | Please use this space to say more about your experiences on Warwick roads, specific locations where you feel unsafe, or feedback about the project. |
|--|--|--|--|---|--|
| Outside of the Villages but within the Town Limits | Automobile | Speeding,Lack of Pedestrian Infrastructure,Pedestrian Safety,Lack of Multi-Modal Transport | | Engineering, Education, Enforcement | |
| Outside of the Town limits | Walking | Speeding,Crashes | | Engineering, Education, Enforcement | We need to add an outline to the map for the town boundaries and the three village boundaries. Or something to make it clearer where the town/villages are... the Town of Warwick does not show as a label right away. |
| Outside of the Villages but within the Town Limits | Automobile | Speeding,Commercial Traffic,Lack of Multi-Modal Transport | | Engineering, Enforcement, Education | Newport bridge rd in amity hamlet could really use wider roads especially around the dangerous hill. Also miller lane off of foley rd becomes a racetrack with the high school kids during morning and afternoon school rush. |

Warwick SS4A
Appendix - Online Survey #1

| Where do you live in the Town? | What is your primary mode of transportation in the Town? | What transportation safety issues have you experienced in the Town of Warwick? | Other - What transportation safety issues have you experienced in the Town of Warwick? | What strategies would you like to see the Town of Warwick use to combat the transportation safety issues? | Please use this space to say more about your experiences on Warwick roads, specific locations where you feel unsafe, or feedback about the project. |
|--|--|---|--|---|--|
| Outside of the Villages but within the Town Limits | Automobile | Pedestrian Safety | | Enforcement, Engineering, Education | <p>265 route 94 south</p> <p>Quite simple. Let residents put their mailbox in front of their house. Lots of residents have their mailbox on other side of the highway. With all the new traffic and feet of snow its very dangerous. I cross the highway once a week for my mail to limit my chances of my demise. This is simple saves lives and costs nothing!</p> <p>Thanks, Curt</p> |
| Outside of the Villages but within the Town Limits | Automobile | Speeding, Pedestrian Safety, Lack of Multi-Modal Transport | | Enforcement, Engineering, Education | <p>Hi, I have already communicated this issue with a letter to Supervisor Dwyer and he has responded. I would like to note there is also limited visibility at the entrance to Route 17A from Cascade Road due to the grade of the hill, signs and snow piles. I realize this is a state road and maybe difficult to address. Thanks for all you do!</p> |
| Outside of the Villages but within the Town Limits | Motorcycle | Speeding, Crashes, Lack of Pedestrian Infrastructure, Pedestrian Safety, Commercial Traffic, Lack of Multi-Modal Transport, other | Mass transit options are limited | Engineering, Enforcement, Education | |
| Village of Greenwood Lake | Automobile | Speeding, Lack of Multi-Modal Transport | | Enforcement, Engineering, Education | |

Warwick SS4A
Appendix - Online Survey #1

| Where do you live in the Town? | What is your primary mode of transportation in the Town? | What transportation safety issues have you experienced in the Town of Warwick? | Other - What transportation safety issues have you experienced in the Town of Warwick? | What strategies would you like to see the Town of Warwick use to combat the transportation safety issues? | Please use this space to say more about your experiences on Warwick roads, specific locations where you feel unsafe, or feedback about the project. |
|--|--|--|--|---|---|
| Village of Warwick | Automobile | Speeding, Commercial Traffic, Lack of Multi-Modal Transport | | Engineering, Enforcement, Education | No question the Village of Warwick is experiencing congestion during rush hour and on weekends. Finding new ways to alleviate traffic pressure points would be very welcome. Creating paths/lanes for multi-modal transportation to/from the down town area, and to/from the food stores would be amazing. Thanks so much for this survey. |
| Outside of the Villages but within the Town Limits | Automobile | Speeding, Crashes, Lack of Pedestrian Infrastructure, Pedestrian Safety, Commercial Traffic, Lack of Multi-Modal Transport | | Enforcement, Engineering, Education | Maybe lower speed limit from 40 to 35 on Jessup, difficult to even get mail, never mind take a walk on one of the most beautiful roads in town. The town did re-do the road surface recently, which corrected the humps and slightly widened the road- thank you! |
| Outside of the Villages but within the Town Limits | Automobile | Speeding, Lack of Pedestrian Infrastructure, Pedestrian Safety, Lack of Multi-Modal Transport | | Engineering, Education, Enforcement | Wickham Woodlands is a wonderful outdoor asset for the town. But myself, friends and others who routinely walk there and out State School Road, we often experience unsafe and even threatening drivers - speeding, yelling abuse or crowding walkers on the road. There is little to no shoulder and speed does not seem to be enforced. Having a dedicated walking lane would be helpful - along with speed deterrents (signs, cameras, etc.) |

Warwick SS4A
Appendix - Online Survey #1

| Where do you live in the Town? | What is your primary mode of transportation in the Town? | What transportation safety issues have you experienced in the Town of Warwick? | Other - What transportation safety issues have you experienced in the Town of Warwick? | What strategies would you like to see the Town of Warwick use to combat the transportation safety issues? | Please use this space to say more about your experiences on Warwick roads, specific locations where you feel unsafe, or feedback about the project. |
|--|--|--|--|---|---|
| Outside of the Villages but within the Town Limits | Automobile | Speeding,Lack of Pedestrian Infrastructure,Pedestrian Safety,Lack of Multi-Modal Transport | | Enforcement, Engineering, Education | I walk along State School Road and there are always cars and trucks speeding in both directions. |
| Outside of the Villages but within the Town Limits | Automobile | Speeding,Lack of Pedestrian Infrastructure,Pedestrian Safety | | Enforcement, Engineering, Education | I am alarmed and dismayed about the speeding, in the village particularly on South street Extension. There are no sidewalks at all and cars often reach far beyond the speed limit of 25. |
| Outside of the Villages but within the Town Limits | Automobile | Speeding,Lack of Pedestrian Infrastructure,Pedestrian Safety,Lack of Multi-Modal Transport | | Engineering, Enforcement, Education | Very concerned for bridge replacement in Bellvale and ALL of the traffic coming down already stressed Iron Forge and Bellvale Lakes Rd. Huge dump trucks use this as a regular route already! |
| Village of Warwick | Automobile | Lack of Multi-Modal Transport,other | Better access FOR motor vehicles in town.. example... the light at 94 and Colonial rd. | Engineering, Enforcement, Education | The intersection of colonial rd. And route 94... |

Warwick SS4A
Appendix - Online Survey #1

| Where do you live in the Town? | What is your primary mode of transportation in the Town? | What transportation safety issues have you experienced in the Town of Warwick? | Other - What transportation safety issues have you experienced in the Town of Warwick? | What strategies would you like to see the Town of Warwick use to combat the transportation safety issues? | Please use this space to say more about your experiences on Warwick roads, specific locations where you feel unsafe, or feedback about the project. |
|--|--|--|--|---|--|
| Village of Florida | Automobile | Speeding,Crashes,Lack of Pedestrian Infrastructure,Commercial Traffic | | Enforcement, Engineering, Education | An abundance of traffic infractions daily and my experience is that the offenders are youthful drivers that don't have a respect for following rules . I believe with cooperation through the DMV we should have restriction parameters instituted on all drivers 16 to 21 that prohibits driving privilege of stop for speeding , dui or causes an accident in increments of 6 month first offense , 12 months 2nd offense , year suspension 3rd offense . Prohibited license if 4th offense occurs for 5 years . Time to get tough and clearly show driving is an earned privilege that requires full adherence to the rules of the road . |
| Village of Florida | Automobile | Speeding,Lack of Pedestrian Infrastructure | | Engineering, Enforcement, Education | Town growth has surpassed the capacity of its aging infrastructure as we have high levels of traffic (both residential and commercial) on narrow roadways. Creative engineering designs should be utilized to slow traffic and increase the safety of pedestrians. |
| Outside of the Villages but within the Town Limits | Automobile | Lack of Multi-Modal Transport,other | Intersections where visibility is limited due to fences, trees, signage. | Engineering, Education, Enforcement | |

Warwick SS4A
Appendix - Online Survey #1

| Where do you live in the Town? | What is your primary mode of transportation in the Town? | What transportation safety issues have you experienced in the Town of Warwick? | Other - What transportation safety issues have you experienced in the Town of Warwick? | What strategies would you like to see the Town of Warwick use to combat the transportation safety issues? | Please use this space to say more about your experiences on Warwick roads, specific locations where you feel unsafe, or feedback about the project. |
|--|--|--|--|---|--|
| Village of Warwick | Automobile | Speeding, Pedestrian Safety | | Enforcement, Engineering, Education | There has been a major increase in car/truck drivers in the past 6 months. Including an increase in what seems to be a cut through for Jersey drivers. There are rarely cars that do the speed limit. As the weather breaks the amount of young children whose parents park on Park Lane to go to Stanley Deming Park will be in certain danger by these reckless drivers. They seem to not respect the fact that people actually live on this block. We certainly need enforcement to protect the children and neighbors. |
| Outside of the Villages but within the Town Limits | Automobile | Pedestrian Safety, Lack of Multi-Modal Transport, other | Motorists not signally there intended actions | Engineering, Enforcement, Education | Motorists not signaling for turns, etc., some motorists speeding and motorists being impatient |
| Outside of the Villages but within the Town Limits | Automobile | Lack of Multi-Modal Transport | | Engineering, Education, Enforcement | |
| Village of Warwick | Automobile | Speeding | | Enforcement, Engineering, Education | Please change speed limit on road in front of the Homestead Village Drive entrance. The motorcycles and "hot" cars use that as a drag race area, especially in summer. Noise is terrible and breaks ordinance rules. |

Warwick SS4A
Appendix - Online Survey #1

| Where do you live in the Town? | What is your primary mode of transportation in the Town? | What transportation safety issues have you experienced in the Town of Warwick? | Other - What transportation safety issues have you experienced in the Town of Warwick? | What strategies would you like to see the Town of Warwick use to combat the transportation safety issues? | Please use this space to say more about your experiences on Warwick roads, specific locations where you feel unsafe, or feedback about the project. |
|--|--|--|--|---|--|
| Outside of the Villages but within the Town Limits | Automobile | Speeding, Pedestrian Safety, Lack of Multi-Modal Transport | | Engineering, Enforcement, Education | I live at [redacted] Brady Road. I deal with cars and trucks speeding down the mountain while exiting my driveway to go to the village. Over the 40+ years I've lived here, I've helped many drivers who have gone off the road or hit a telephone pole. The construction of more condos on Brady Rd will magnify the problem. I often walk 5 miles in Wickham Woodland Park. A cinder walking path on State School Rd and the road near the lake would make walking safer. Cars speed through the park. A dedicated walking path in the park would be a huge enhancement and keep walkers safe. |
| Village of Greenwood Lake | Automobile | Speeding, Lack of Pedestrian Infrastructure, Pedestrian Safety | | Engineering, Enforcement, Education | |
| Village of Greenwood Lake | Bicycle | Speeding, Lack of Multi-Modal Transport | | Engineering, Enforcement, Education | |
| Village of Greenwood Lake | Automobile | Speeding, Lack of Pedestrian Infrastructure, Lack of Multi-Modal Transport | | Engineering, Enforcement, Education | More walking and biking lanes. Trails that lead between Villages. |

Warwick SS4A
Appendix - Online Survey #1

| Where do you live in the Town? | What is your primary mode of transportation in the Town? | What transportation safety issues have you experienced in the Town of Warwick? | Other - What transportation safety issues have you experienced in the Town of Warwick? | What strategies would you like to see the Town of Warwick use to combat the transportation safety issues? | Please use this space to say more about your experiences on Warwick roads, specific locations where you feel unsafe, or feedback about the project. |
|--|--|--|--|---|---|
| Outside of the Villages but within the Town Limits | Automobile | Lack of Pedestrian Infrastructure, Lack of Multi-Modal Transport | | Engineering, Education, Enforcement | <p>There needs to be better education for drivers to understand how to approach cyclists. There is no respect when passing cyclists on curves and hills in situations where drivers have no way of seeing what's coming in the other lane when they pass. Drivers would never consider passing a car under the same circumstances.</p> <p>I find inconsistent speed limits on local and state routes confusing as there is often no logic to the various speeds. I've learned to navigate the curves and hills believing most rural roads could be 55 but I understand that for many, the curves and hills are intimidating. Following behind drivers inexperienced with local geography going 20-30 miles below the speed limit is very frustrating and contributes to tailgating and dangerous passing situations.</p> <p>There are many turns with reduced visibility due to hills and curves. Ensuring that the naturally limited visibility is not compounded by foliage and other obstructions of the view of the turning driver is critical.</p> |
| Village of Greenwood Lake | Walking | Lack of Pedestrian Infrastructure | | Engineering, Enforcement, Education | |

Warwick SS4A
Appendix - Online Survey #1

| Where do you live in the Town? | What is your primary mode of transportation in the Town? | What transportation safety issues have you experienced in the Town of Warwick? | Other - What transportation safety issues have you experienced in the Town of Warwick? | What strategies would you like to see the Town of Warwick use to combat the transportation safety issues? | Please use this space to say more about your experiences on Warwick roads, specific locations where you feel unsafe, or feedback about the project. |
|--------------------------------|--|---|--|---|---|
| Village of Greenwood Lake | Automobile | Speeding,Lack of Pedestrian Infrastructure,Pedestrian Safety,Commercial Traffic | | Engineering, Enforcement, Education | <p>The intersection of Windermere Ave and 17A could use a sign to notify drivers to signal which way they are going.</p> <p>I would love a real sidewalk that is safe so I can walk into the Village. I live at █ county hwy 5 in the Village of Greenwood Lake.</p> <p>I would love to see a stop sign or traffic signal on intersection of Windermere Ave /17A . When there's a ton of traffic, it's a long wait to get into the Main section of the Village of Greenwood Lake.</p> |
| Village of Florida | Automobile | Speeding,Crashes,Lack of Pedestrian Infrastructure,Pedestrian Safety | | Engineering, Education, Enforcement | I would like to see Warwick and the Village of Florida be a more pedestrian friendly neighborhood |

Warwick SS4A
Appendix - Online Survey #1

| Where do you live in the Town? | What is your primary mode of transportation in the Town? | What transportation safety issues have you experienced in the Town of Warwick? | Other - What transportation safety issues have you experienced in the Town of Warwick? | What strategies would you like to see the Town of Warwick use to combat the transportation safety issues? | Please use this space to say more about your experiences on Warwick roads, specific locations where you feel unsafe, or feedback about the project. |
|--|--|--|--|---|---|
| Outside of the Villages but within the Town Limits | Automobile | Speeding, Crashes, Lack of Pedestrian Infrastructure, Pedestrian Safety, Lack of Multi-Modal Transport | | Enforcement, Engineering, Education | My house backs up to East Shore Rd. First and foremost the road is in poor condition despite it being repaved not too long ago. There is still ponding behind my house which floods my yard. I have had at least 4 vehicles end up in my yard due to accidents. 40 mph is too fast for a residential road that has so many twists and turns. The pavement is disintegrating on the edge and the median paint only lasts a few months and there is no white edging. A few days ago a vehicle drove completely into the ditch damaging their vehicle and continued driving on. With the summer we have lots of loud packs of cars and motorcycles that use our roads for sport without concern of safety or sound pollution. The streets are difficult enough to pull out of with the speed and people are usually going faster not staying on their side of the road. More police presence, slowing down the vehicles, putting road cuts and reflective paint or pavement markings on the median line, safe walkways are all needed. |
| Outside of the Villages but within the Town Limits | Automobile | other | People don't stop before making a right on red in GWL | Enforcement, Engineering, Education | I was almost hit multiple times traveling on toward the light in GWL and people cut me off because they don't stop at light before making a right on red |
| Village of Greenwood Lake | Automobile | Speeding, Crashes, other | Massive tailgating | Enforcement, Education, Engineering | |

Warwick SS4A
Appendix - Online Survey #1

| Where do you live in the Town? | What is your primary mode of transportation in the Town? | What transportation safety issues have you experienced in the Town of Warwick? | Other - What transportation safety issues have you experienced in the Town of Warwick? | What strategies would you like to see the Town of Warwick use to combat the transportation safety issues? | Please use this space to say more about your experiences on Warwick roads, specific locations where you feel unsafe, or feedback about the project. |
|--------------------------------|--|---|--|---|---|
| Village of Greenwood Lake | Automobile | Speeding | | Enforcement, Engineering, Education | People just speed on Ten Eyke Avenue a lot. |
| Village of Greenwood Lake | Motorcycle | Commercial Traffic, No Concerns or Issues | | Education, Engineering, Enforcement | Continue extending sidewalks and tree trimming. |
| Outside of the Town limits | Automobile | other | Unsafe intersections | Engineering, Enforcement, Education | Top of mountain at 17A/cain road - bellvale creamery: Need to reduce speed on approach. There should be flashing yellow lights warning of this dangerous intersection. Jersey Ave light: there should be no right on red to Jersey ave. You cannot see cars coming through the green light from jersey ave and sometimes large vehicles (NJ transit bus) comes around that corner. Many cars take this turn too tight. |
| Village of Warwick | Automobile | Speeding, Lack of Pedestrian Infrastructure, Pedestrian Safety, Lack of Multi-Modal Transport | | Enforcement, Engineering, Education | Intersection of Foley and County Rt 1 limited site distance, and many times vehicles on both sides trying to make turns or go across. End of Forester and Colonial needs to be dealt with. Speeding on Oakland very common as people try to catch the light. Need sidewalks on Maple avenue side. |

Warwick SS4A
Appendix - Online Survey #1

| Where do you live in the Town? | What is your primary mode of transportation in the Town? | What transportation safety issues have you experienced in the Town of Warwick? | Other - What transportation safety issues have you experienced in the Town of Warwick? | What strategies would you like to see the Town of Warwick use to combat the transportation safety issues? | Please use this space to say more about your experiences on Warwick roads, specific locations where you feel unsafe, or feedback about the project. |
|--------------------------------|--|---|---|---|--|
| Village of Warwick | Automobile | Speeding,other | Traffic conflicts at intersections, e.g. High St @ South St & Main St, Forester Ave @ Colonial Ave, Colonial Ave @ Main St & Maple Ave, entry to Key Bank from Maple Ave. | Engineering, Enforcement, Education | Drivers are often aggressive in approaching and passing through intersections in the Village of Warwick. |
| Village of Florida | Automobile | Speeding,Lack of Pedestrian Infrastructure,Pedestrian Safety,Commercial Traffic | | Enforcement, Engineering, Education | 94 other wise South/ north Main Street. The speeding is horrendous. The is limited police presence on any given day. The cars and large truck are on average doing 45 miles an hour if not more. There should also be a cross walk into Cedar Crest housing development. There are numerous individuals that walk and crossing there you take your Life into your hands as fast as people are driving. Step up the police presence!!!! |
| Village of Greenwood Lake | Automobile | other | | Education, Engineering, Enforcement | Corner of Oak St & Windermere, it's very hard to see oncoming traffic from the left of Four Brothers Pizza due to parked cars. The yellow painted no parking zone is not restricted enough to keep cars beyond it from blocking one's view. |

Warwick SS4A
Appendix - Online Survey #1

| Where do you live in the Town? | What is your primary mode of transportation in the Town? | What transportation safety issues have you experienced in the Town of Warwick? | Other - What transportation safety issues have you experienced in the Town of Warwick? | What strategies would you like to see the Town of Warwick use to combat the transportation safety issues? | Please use this space to say more about your experiences on Warwick roads, specific locations where you feel unsafe, or feedback about the project. |
|--|--|---|---|---|---|
| Outside of the Villages but within the Town Limits | Automobile | Lack of Pedestrian Infrastructure, Commercial Traffic | | Engineering, Enforcement, Education | Pedestrians walking the street. Make a walking path or even better a LOOP to encourage walking but not on roads. Connect village to the parks. |
| Village of Warwick | Automobile | Lack of Pedestrian Infrastructure, Pedestrian Safety, Commercial Traffic, Lack of Multi-Modal Transport | | Enforcement, Engineering, Education | <p>The most unsafe corner in the Village of Warwick is West and Main (in my experience). This is due to the number of delivery trucks that park there. Imagine being in a vehicle on West St, facing the light at Main. A huge delivery truck is unloading/illegally parked in front of Fizzy on West and a Jones Chemical tanker tries to navigate a left turn. It happens to me daily. And it's terrifying.</p> <p>Apart from the made-up loading zones at that corner, the access road to Jones Chemical from County Route 1 through Sweetmans Farm should be pursued (again).</p> |
| Village of Greenwood Lake | Automobile | No Concerns or Issues | | Engineering, Enforcement, Education | |
| Outside of the Villages but within the Town Limits | Automobile | other | The intersection of Blackrock Rd and Warwick Turnpike is the most dangerous intersection in the town. It needs to be reconfigured | Engineering, Enforcement, Education | Cascade road is in desperate need of repair. The edges of the road and drainage are in disrepair |

Warwick SS4A
Appendix - Online Survey #1

| Where do you live in the Town? | What is your primary mode of transportation in the Town? | What transportation safety issues have you experienced in the Town of Warwick? | Other - What transportation safety issues have you experienced in the Town of Warwick? | What strategies would you like to see the Town of Warwick use to combat the transportation safety issues? | Please use this space to say more about your experiences on Warwick roads, specific locations where you feel unsafe, or feedback about the project. |
|--|--|--|--|---|---|
| Village of Warwick | Automobile | Speeding, Pedestrian Safety | | Enforcement, Engineering, Education | <p>On Forester Ave where I live and also have a business cars speed in excess of the speed limit and most vehicles do not yield to pedestrians. More visible crosswalks; signs in roadway informing drivers of the walkways; a 4-way stop sign intersection at Memorial Park would help significantly. With a school, senior housing and a park Forester Ave should be made safer than it is. Several disabled people as well as seniors and kids on bikes and electric scooters ride and walk the road daily along with dog walkers. It seems tough for people to drive slow and given that the roadway slopes down cars pickup speed. Forester Ave is a cut through roadway to avoid driving through the village and receives a fair amount of traffic everyday but much quieter on Sundays. Warwick Village is great, our major and our local government are also great! Looking forward to improvements to our village.</p> |
| Outside of the Villages but within the Town Limits | Automobile | Lack of Pedestrian Infrastructure, Lack of Multi-Modal Transport | | Engineering, Education, Enforcement | <p>Kids should be able to walk safely or ride bikes safely in our town. Also the intersections on Cty Rte 1 by Edenville and Jones Rd are a constant worry. And the intersections around the school during drop off and pickup are like the Wild West especially Cty art 1 and Sanfordville.</p> |

Warwick SS4A
Appendix - Online Survey #1

| Where do you live in the Town? | What is your primary mode of transportation in the Town? | What transportation safety issues have you experienced in the Town of Warwick? | Other - What transportation safety issues have you experienced in the Town of Warwick? | What strategies would you like to see the Town of Warwick use to combat the transportation safety issues? | Please use this space to say more about your experiences on Warwick roads, specific locations where you feel unsafe, or feedback about the project. |
|--|--|--|--|---|---|
| Village of Warwick | Automobile | Speeding,Lack of Pedestrian Infrastructure,Lack of Multi-Modal Transport | | Engineering, Education, Enforcement | |
| Outside of the Villages but within the Town Limits | Automobile | Speeding,Commercial Traffic | | Enforcement, Education, Engineering | Prices Switch road has not been resurfaced in over 20 years. There is no longer any real road surface to speak of other than bare tar in most areas. In the summer months, the apparent solution is to spread some sort of sand/ grit mixture to absorb the tar. It has been done that way for many years which indicates to me, the town is aware of the poor road conditions. |
| Village of Warwick | Automobile | Speeding,Lack of Pedestrian Infrastructure | | Enforcement, Education, Engineering | West Street is the path to and from the High School.. Many vehicles (most likely students) speed in both directions. They should slow down and show respect for the neighborhood as well as the pedestrians along that route. Speeding will not get them to their intended location more quickly since speeding along West Street gets them to the Main Street traffic light , which is always in operation, or tp the school which is always waiting for them. |

Warwick SS4A
Appendix - Online Survey #1

| Where do you live in the Town? | What is your primary mode of transportation in the Town? | What transportation safety issues have you experienced in the Town of Warwick? | Other - What transportation safety issues have you experienced in the Town of Warwick? | What strategies would you like to see the Town of Warwick use to combat the transportation safety issues? | Please use this space to say more about your experiences on Warwick roads, specific locations where you feel unsafe, or feedback about the project. |
|--|--|--|--|---|---|
| Village of Warwick | Automobile | Speeding, Lack of Pedestrian Infrastructure, Lack of Multi-Modal Transport | | Enforcement, Engineering, Education | <p>Speeding is rampant on West Street. For a "residential" street, it feels like a treacherous highway as loud heavy landscape trucks, tractor trailers, school buses, etc. whiz by all day long.</p> <p>There are families out with strollers and children with ride-on toys who must jump the curb into the street to avoid uneven sidewalks. I often witness vehicles moving way too fast past groups of teens on bicycles. When I lived on Barbara Drive, and was regularly driving on Brady Road, vehicles were speeding despite the signs.</p> <p>It seems there is a huge disregard for the speed limit except when there is a consequence. I would vote for speed cameras, lasers, and the consequent speeding ticket. In addition, I recommend that traffic cones be reinstated in Main Street crosswalks. Depending on whether cars are parked in metered parking leading up to the crosswalks, I find it a challenge to see waiting crossers even as I drive at 20-25 mph.</p> |
| Outside of the Villages but within the Town Limits | Automobile | Speeding | | Engineering, Education, Enforcement | |

Warwick SS4A
Appendix - Online Survey #1

| Where do you live in the Town? | What is your primary mode of transportation in the Town? | What transportation safety issues have you experienced in the Town of Warwick? | Other - What transportation safety issues have you experienced in the Town of Warwick? | What strategies would you like to see the Town of Warwick use to combat the transportation safety issues? | Please use this space to say more about your experiences on Warwick roads, specific locations where you feel unsafe, or feedback about the project. |
|--|--|--|--|---|--|
| Village of Warwick | Automobile | Speeding,Lack of Pedestrian Infrastructure | | Education, Engineering, Enforcement | |
| Outside of the Villages but within the Town Limits | Automobile | Speeding,Lack of Pedestrian Infrastructure | | Engineering, Education, Enforcement | |
| Outside of the Villages but within the Town Limits | Automobile | Speeding,Lack of Pedestrian Infrastructure | | Engineering, Education, Enforcement | Better sidewalk infrastructure for kids walking into the village from school |
| Village of Warwick | Walking | Lack of Pedestrian Infrastructure | | Engineering, Education, Enforcement | Oakland avenue (Main Street) needs more crosswalks between 3rd street and Galloway road. |
| Village of Warwick | Automobile | Speeding | | Enforcement, Engineering, Education | Give more speeding tickets on 17A! |
| Village of Warwick | Automobile | Speeding,Lack of Pedestrian Infrastructure,Pedestrian Safety,Lack of Multi-Modal Transport,other | Seeing pedestrians waiting in walkways in commercial area of the village is very hard to see - cars are parked right up to the entrance to the walkways and it is often hard to see people standing there waiting to cross | Engineering, Enforcement, Education | Cars speeding on West Street is an issue. Lack of sidewalks in my neighborhood makes walking and driving difficult. Two extremes exist - people driving too fast and pedestrians not understanding that they need to make a bit of room for cars when they are walking I feel that accidents are waiting to happen. A safe and flat way to walk into the village from Locust Street would also be a bonus, as would being able to walk to the library without having to cross the street so many times because of a lack of sidewalks. |
| Outside of the Villages but within the Town Limits | Automobile | Speeding,Crashes,Lack of Multi-Modal Transport,other | Reckless driving - passing in no-passing zones | Enforcement, Engineering, Education | Since my comments were more than 1,000 words, I will send them via email to the address listed above. |
| Village of Warwick | Automobile | Pedestrian Safety | | Engineering, Education, Enforcement | |

Warwick SS4A
Appendix - Online Survey #1

| Where do you live in the Town? | What is your primary mode of transportation in the Town? | What transportation safety issues have you experienced in the Town of Warwick? | Other - What transportation safety issues have you experienced in the Town of Warwick? | What strategies would you like to see the Town of Warwick use to combat the transportation safety issues? | Please use this space to say more about your experiences on Warwick roads, specific locations where you feel unsafe, or feedback about the project. |
|--|--|--|--|---|---|
| Village of Warwick | Walking | Speeding, Pedestrian Safety, Commercial Traffic | | Education, Enforcement, Engineering | people passing on the right on main street (cutting through parking spots to do) the intersection of main street, south street, and high street. |
| Outside of the Villages but within the Town Limits | Automobile | Speeding, Crashes, Commercial Traffic | | Enforcement, Engineering, Education | I would like to see the speed limit reduced on Kings Highway. 50 mph is fast and we have witnessed accidents at some intersections. The speed limit on Rt 94 is 45 and people always go faster. As a grandmother with 3 grandsons that will become new drivers, I think the limits are too high by so many residents driveways. We have a slight hill towards our drive and cars tend to appear out of nowhere. |

Warwick SS4A
Appendix - Online Survey #1

| Where do you live in the Town? | What is your primary mode of transportation in the Town? | What transportation safety issues have you experienced in the Town of Warwick? | Other - What transportation safety issues have you experienced in the Town of Warwick? | What strategies would you like to see the Town of Warwick use to combat the transportation safety issues? | Please use this space to say more about your experiences on Warwick roads, specific locations where you feel unsafe, or feedback about the project. |
|--|--|--|--|---|--|
| Outside of the Villages but within the Town Limits | Automobile | Speeding,Lack of Pedestrian Infrastructure,other | Large potholes | Engineering, Education, Enforcement | <p>I would love to see the large potholes on Grand Street as you're entering the village fixed. I've also heard complaints of other potholes on 94 but the ones on Grand stand out the most to me.</p> <p>I would also love to see better sidewalks in the village that are more stroller friendly. There are so many families with young children who would benefit from a more walkable village.</p> <p>There have also been times when I'm waiting to cross Main st in the village and drivers don't stop. I don't know if they're just not paying attention or if they see me but aren't aware they're required to stop for a pedestrian in the crosswalk. Maybe better advertising/education in this regard would help.</p> |
| Village of Florida | Automobile | Speeding,Pedestrian Safety,other | Loud exhaust and burnouts | Enforcement, Engineering, Education | <p>Excessive speeding on farries avenue especially cars coming down the hill. They blow right through the stop sign. Also motorcycles repeatedly stop in front of 26 farries ave and do burnouts. Kids getting out of school around 2:30 pm also speed up the road while other kids are walking on the sidewalk. It's unsafe for my 3 year old granddaughter to walk with me on the side walk. I have reported these incidents to police repeatedly and they are just not patrolling the street enough. We need cameras.</p> |

Warwick SS4A
Appendix - Online Survey #1

| Where do you live in the Town? | What is your primary mode of transportation in the Town? | What transportation safety issues have you experienced in the Town of Warwick? | Other - What transportation safety issues have you experienced in the Town of Warwick? | What strategies would you like to see the Town of Warwick use to combat the transportation safety issues? | Please use this space to say more about your experiences on Warwick roads, specific locations where you feel unsafe, or feedback about the project. |
|--|--|---|--|---|--|
| Village of Florida | Automobile | Speeding,Lack of Pedestrian Infrastructure,Pedestrian Safety,Commercial Traffic | | Engineering, Enforcement, Education | |
| Outside of the Villages but within the Town Limits | Automobile | Speeding | | Education, Enforcement, Engineering | We believe the speed limit along kings high should be consider for a reduction of the 50 mph to 40 mph |
| Village of Florida | Automobile | Speeding,Commercial Traffic,other | Not enough accessible parking on Main Street in the village of Florida! | Enforcement, Engineering, Education | Yes, the roads are horrible through the village of Florida, but being a lifetime resident and growing up in the village there was always monitoring of the speed. I live on the corner of Roosevelt Avenue and it's 35 miles an hour. The high volume of speeding from trucks, cars, motorcycles, etc.past my house is ridiculous and very dangerous. Not really sure why we don't see more people being pulled over for speeding or police presence. How about one of those electronic signs in that area? Maybe that would deter people or at least remind them that it is only 35 mph. Also, it is very dangerous because there is no sidewalk after El Azteca. |
| Outside of the Villages but within the Town Limits | Automobile | Speeding,Crashes,Commercial Traffic | | Enforcement, Engineering, Education | |
| Outside of the Villages but within the Town Limits | Automobile | Speeding,Lack of Pedestrian Infrastructure | | Education, Enforcement, Engineering | |

Warwick SS4A
Appendix - Online Survey #1

| Where do you live in the Town? | What is your primary mode of transportation in the Town? | What transportation safety issues have you experienced in the Town of Warwick? | Other - What transportation safety issues have you experienced in the Town of Warwick? | What strategies would you like to see the Town of Warwick use to combat the transportation safety issues? | Please use this space to say more about your experiences on Warwick roads, specific locations where you feel unsafe, or feedback about the project. |
|--|--|---|--|---|--|
| Outside of the Villages but within the Town Limits | Automobile | Lack of Multi-Modal Transport,other | Can we block NYC and LI residents from moving here? Itd be better if we could. | Education, Engineering, Enforcement | <p>1. The above map only allows placement of a single pin. So it's not terribly usefull</p> <p>2. As a whole, there aren't many issues with the traffic patterns in Warwick or the surrounding areas. Im sure there are people with various peves and self interests tjat will use this forum to effect change to their benefit, but if people obey the current laws well be in good shape</p> |
| Village of Greenwood Lake | Automobile | Speeding,Crashes,Lack of Pedestrian Infrastructure,Pedestrian Safety,Commercial Traffic,Lack of Multi-Modal Transport | | Engineering, Enforcement, Education | Sterling road in the village and going out of the village towards jersey is plagued with speeding, there is no safe place to walk, there are no guard rails on the water side, the road is narrow and large trucks and buses make it very hazardous |
| Village of Greenwood Lake | Automobile | Speeding,Lack of Pedestrian Infrastructure | | Engineering, Education, Enforcement | Road from Teaneck which becomes Sterling and then Edgemere is poorly lined, minimal lighting, and people are always waking on road, there are no sidewalks. Impossible to see people especially at night. Unfortunately most people are dressed in dark clothes, and no reflective jackets or other safety gear . Speed limits are not followed. |

Warwick SS4A
Appendix - Online Survey #1

| Where do you live in the Town? | What is your primary mode of transportation in the Town? | What transportation safety issues have you experienced in the Town of Warwick? | Other - What transportation safety issues have you experienced in the Town of Warwick? | What strategies would you like to see the Town of Warwick use to combat the transportation safety issues? | Please use this space to say more about your experiences on Warwick roads, specific locations where you feel unsafe, or feedback about the project. |
|--------------------------------|--|--|---|---|--|
| Village of Warwick | Automobile | Lack of Pedestrian Infrastructure, Pedestrian Safety, Lack of Multi-Modal Transport, other | not enough transportation alternatives to driving; small roads that encourage accidents (side streets along Main St in Village of Warwick | Engineering, Enforcement, Education | Very car dependent area while also not having enough infrastructure to support vehicles like more parking, wider streets, repaired and repaved roads. Repavement needs to be done on Oakland Ave in Village of Warwick, Main Street in Village of Florida, For pedestrians, either sidewalks are old and need to be redone for safety or sidewalks do not exist where they should. For example, sidewalks along West Street from Village Cove through Halligan's needs to be redone, particularly the stone sidewalk parts. As well, sidewalks need to be installed from where Raymond Fire House Co. is through Village Cove. |
| Village of Florida | Automobile | Speeding, Lack of Pedestrian Infrastructure, Pedestrian Safety | | Enforcement, Engineering, Education | I walk the dog every day and Farrier Ave has no sidewalks and people are speeding on Farriers Ave, nobody pays attention to the speeding device which very often shows speeding above 50 miles per hour. In addition, most of the people don't stop at the stop signs. |
| Village of Florida | Automobile | Speeding, other | Passing double yellow line | Enforcement, Engineering, Education | As a resident on Randall st in Florida ny no one slows down coming from the Chester side when the speed limit drops and everyone speeds up before it turns to 55 I see once or twice a week people passing other cars on the double yellow and as a delivery driver part of my area is Warwick and there's no doubt in my mind this will be good for warwick |

Warwick SS4A
Appendix - Online Survey #1

| Where do you live in the Town? | What is your primary mode of transportation in the Town? | What transportation safety issues have you experienced in the Town of Warwick? | Other - What transportation safety issues have you experienced in the Town of Warwick? | What strategies would you like to see the Town of Warwick use to combat the transportation safety issues? | Please use this space to say more about your experiences on Warwick roads, specific locations where you feel unsafe, or feedback about the project. |
|--|--|--|--|---|---|
| Outside of the Villages but within the Town Limits | Automobile | Lack of Pedestrian Infrastructure,Lack of Multi-Modal Transport,other | Hard to turn where there is no stoplight and alot of traffic | Engineering, Enforcement, Education | There are a number of intersections that are very hard to turn due to no traffic light. Where Warwick Tpke crosses Rte 94 (Shoprite and Pennings), Where Grand St comes into Rte 94 (St Anthony's Hospital), Where DeKay crosses County Route 1. (The blinking light doesn't help)., Where Wheeler Rd turns into Union Corners Rd in Florida,NY. These may have been workable when the populations were smaller, but now that the population has grown and housing is still being built, all of these spots would be helped by a traffic light. |
| Village of Warwick | Automobile | No Concerns or Issues | | Education, Engineering, Enforcement | I am strongly against hidden cameras in our village. |
| Outside of the Villages but within the Town Limits | Automobile | other | | Enforcement, Engineering, Education | the only way you are going to achieve your goals is by enforcement. The locals are the biggest violators. Everybody supports the Police until you are called on the carpet for a traffic violation.Traffic laws apply to somebody else until you are the one captured for violating these laws. |

Warwick SS4A
Appendix - Online Survey #1

| Where do you live in the Town? | What is your primary mode of transportation in the Town? | What transportation safety issues have you experienced in the Town of Warwick? | Other - What transportation safety issues have you experienced in the Town of Warwick? | What strategies would you like to see the Town of Warwick use to combat the transportation safety issues? | Please use this space to say more about your experiences on Warwick roads, specific locations where you feel unsafe, or feedback about the project. |
|--------------------------------|--|--|---|---|---|
| Village of Warwick | Walking | Speeding, Lack of Pedestrian Infrastructure, Pedestrian Safety | | Engineering, Enforcement, Education | We reside on S St Ext and are avid walkers. The lack of a sidewalk & vehicular traffic speeding down from Brady Rd is a major issue. At the very least a painted "sidewalk" like that on West St in the village would be a great start. To that end, the amount of students walking from the MS & HS into the Village certainly suggests lengthening the red painted "sidewalk" from the village all the way to the school's a low cost solution to this problem. |
| Village of Florida | Automobile | other | Sightlines at intersections are blocked by trees, shrubs, signs, retaining walls, garbage receptacles, large pots, etc. | Enforcement, Engineering, Education | The speeding on Old Mt Peter Rd and 17A when the ski slope is open is terrible. People come flying out of the ski slope driveway onto Mt. Peter road without stopping, speeding on Mt. Peter Rd in both directions, never see a patrol car anywhere in all these years. Needs to be monitored. Even worse if you want to actually walk on the road. |
| Outside of the Town limits | Automobile | Speeding | | Enforcement, Engineering, Education | |

Warwick SS4A
Appendix - Online Survey #1

| Where do you live in the Town? | What is your primary mode of transportation in the Town? | What transportation safety issues have you experienced in the Town of Warwick? | Other - What transportation safety issues have you experienced in the Town of Warwick? | What strategies would you like to see the Town of Warwick use to combat the transportation safety issues? | Please use this space to say more about your experiences on Warwick roads, specific locations where you feel unsafe, or feedback about the project. |
|--|--|--|--|---|---|
| Village of Warwick | Automobile | Speeding,Lack of Pedestrian Infrastructure,other | I am concerned about the hill leading down to Shop Rite towards 94 is very dangerous with trucks. Plus that intersection needs a light, especially with Apple season and Pennings. | Engineering, Education, Enforcement | I think sidewalks on the south street extension and up the hill towards Brady mountain would be good. A friend of mine was hit by car there while walking her dog. |
| Village of Florida | Automobile | Speeding, Ped Safety | | Engineering, Enforcement, Education | Speed bumps slow people down. Lines on roadways, keep drivers on their own side. Lighting for crosswalks at night. "Solar lighting". In Florida, people running red lights. |
| Outside of the Villages but within the Town Limits | Automobile | Speeding,Lack of Pedestrian Infrastructure,Lack of Multi-Modal Transport | | Engineering, Enforcement, Education | |
| | | | | | Dangerous intersection for pedestrians Possible speed table/painted crosswalk. Cut through traffic |
| | | | | | Congestion during school pickup and drop off Maple Ave used as a cut through. Does not feel safe for pedestrians. |

Warwick SS4A
Appendix - Online Survey #1

| Where do you live in the Town? | What is your primary mode of transportation in the Town? | What transportation safety issues have you experienced in the Town of Warwick? | Other - What transportation safety issues have you experienced in the Town of Warwick? | What strategies would you like to see the Town of Warwick use to combat the transportation safety issues? | Please use this space to say more about your experiences on Warwick roads, specific locations where you feel unsafe, or feedback about the project. |
|--------------------------------|--|--|--|---|---|
| | | | | | No crosswalk at Werner Ave and Main. Should have sidewalk extend past this intersection to new apartments on Village Dr. |
| | | | | | Easement into the park/trails. Create trail along Glenmere Lake. |
| | | | | | Bad curve, need to slow down |
| | | | | | Glenmere Ave: flying cars, something needs to happen! Red light New St + Glenmere Ave |
| | | | | | Can we make a sidewalk connection on Glenmere Ave? |
| | | | | | Gateway Treatment at Florida limits |
| | | | | | Could there be a sidewalk all the way to Village limits along Main St? |
| | | | | | Lack of striping on Maple Ave |
| | | | | | Lots of kids walk to school! |
| | | | | | Multiple pedestrian generators: basketball court, baseball fields, playground, dog park |
| | | | | | Windermere & Jersey: Cars park near intersection and block sightlines |

Warwick SS4A
Appendix - Online Survey #1

| Where do you live in the Town? | What is your primary mode of transportation in the Town? | What transportation safety issues have you experienced in the Town of Warwick? | Other - What transportation safety issues have you experienced in the Town of Warwick? | What strategies would you like to see the Town of Warwick use to combat the transportation safety issues? | Please use this space to say more about your experiences on Warwick roads, specific locations where you feel unsafe, or feedback about the project. |
|--------------------------------|--|--|--|---|---|
| | | | | | Jersey Ave needs sidewalks. scary with big trucks. Not wide enough |
| | | | | | Wide load trucks avoiding tolls coming through community |
| | | | | | Speeding, high volumes |
| | | | | | Speeding |
| | | | | | lack of pedestrian infrastructure (ice cream shop, Dunkin Donuts) Kids bike in the summer. |
| | | | | | Speeding along 17A |
| | | | | | Lots of through hikers, ebikes on 17A |
| | | | | | Windermere + 17A: Difficult turns and traffic pattern for visitors (Apple Fest, etc.) |
| | | | | | Edgemere Ave: Former railroad bed, deteriorating |
| | | | | | Edgemere Ave: no guardrail, 25 mph in village then 40 mph in NJ |
| | | | | | no guardrail, 6 inch curb, falling rocks/ice |
| | | | | | Edgemere Ave: used as cut through to avoid toll |
| | | | | | No crosswalk near garden center |

Warwick SS4A
Appendix - Online Survey #1

| Where do you live in the Town? | What is your primary mode of transportation in the Town? | What transportation safety issues have you experienced in the Town of Warwick? | Other - What transportation safety issues have you experienced in the Town of Warwick? | What strategies would you like to see the Town of Warwick use to combat the transportation safety issues? | Please use this space to say more about your experiences on Warwick roads, specific locations where you feel unsafe, or feedback about the project. |
|--------------------------------|--|--|--|---|---|
| | | | | | GPS shows speed limit change (55 to 30 mph) too late. |
| | | | | | Drivers blow through GL senior center crosswalk |
| | | | | | possible gateway treatment where speed limit changes |
| | | | | | Kids walking |
| | | | | | Need better sidewalks on West Street. Village govt need to redo them |
| | | | | | I've painted "Slow Down", it hasn't worked. "Culture of speeding + awareness" |
| | | | | | Downtown - people don't pay attention. Raise awareness bikes/scooters |
| | | | | | Forester Ave - race track. Stop signs at park??? |
| | | | | | We need speed humps on Orchard St |
| | | | | | Factory Street: need better sidewalks - mobility issues |
| | | | | | Need stop sign at McFarland and Forester |
| | | | | | Drag racing at 17A and Homestead. Need a light down the hill |

Warwick SS4A
Appendix - Online Survey #1

| Where do you live in the Town? | What is your primary mode of transportation in the Town? | What transportation safety issues have you experienced in the Town of Warwick? | Other - What transportation safety issues have you experienced in the Town of Warwick? | What strategies would you like to see the Town of Warwick use to combat the transportation safety issues? | Please use this space to say more about your experiences on Warwick roads, specific locations where you feel unsafe, or feedback about the project. |
|--------------------------------|--|--|--|---|---|
| | | | | | Use Orchard St as a cut through but go too fast |
| | | | | | Sidewalks on South Street and Galloway need better connection to park |
| | | | | | Concerned about the roundabout not big enough |
| | | | | | Brady + 17A: supervisor knows speeding. No shoulders |
| | | | | | Bad intersection |
| | | | | | Intersection issues. Parking lot at busy intersection. |
| | | | | | Kings Hwy + Lake Station Road: Poor sight distance when going east |

Proposed School Safety Zone Greenwood Lake

Warwick Transportation Safety Action Plan
March 2026

Contact:



Village Crossing Guard



Proposed School Safety Zone

Create a “school safety zone” along Windermere Ave.

- Increase safety for crosswalk at intersection of Windermere Ave and Waterstone Road.

What are some of the concerns.

- Unsafe/excessive speed combined with driver inattention (to include commercial vehicles).
- Views obstructed/limited sight lines for both pedestrians and drivers.

Where the “zone” could be located.

- Start prior to Elm Street on Windermere Ave.
- End at the intersection of Windermere Ave and Jersey Ave.
- Could also continue around Jersey Ave to Vine St. to protect other school crosswalk.

What is needed/suggested.

- Pavement markings to create higher visibility “no parking zones” and improve sight lines.
- Create a reduced speed limit zone during school hours
- Add flashing beacons to existing signage at the crosswalk on Windermere and Waterstone.

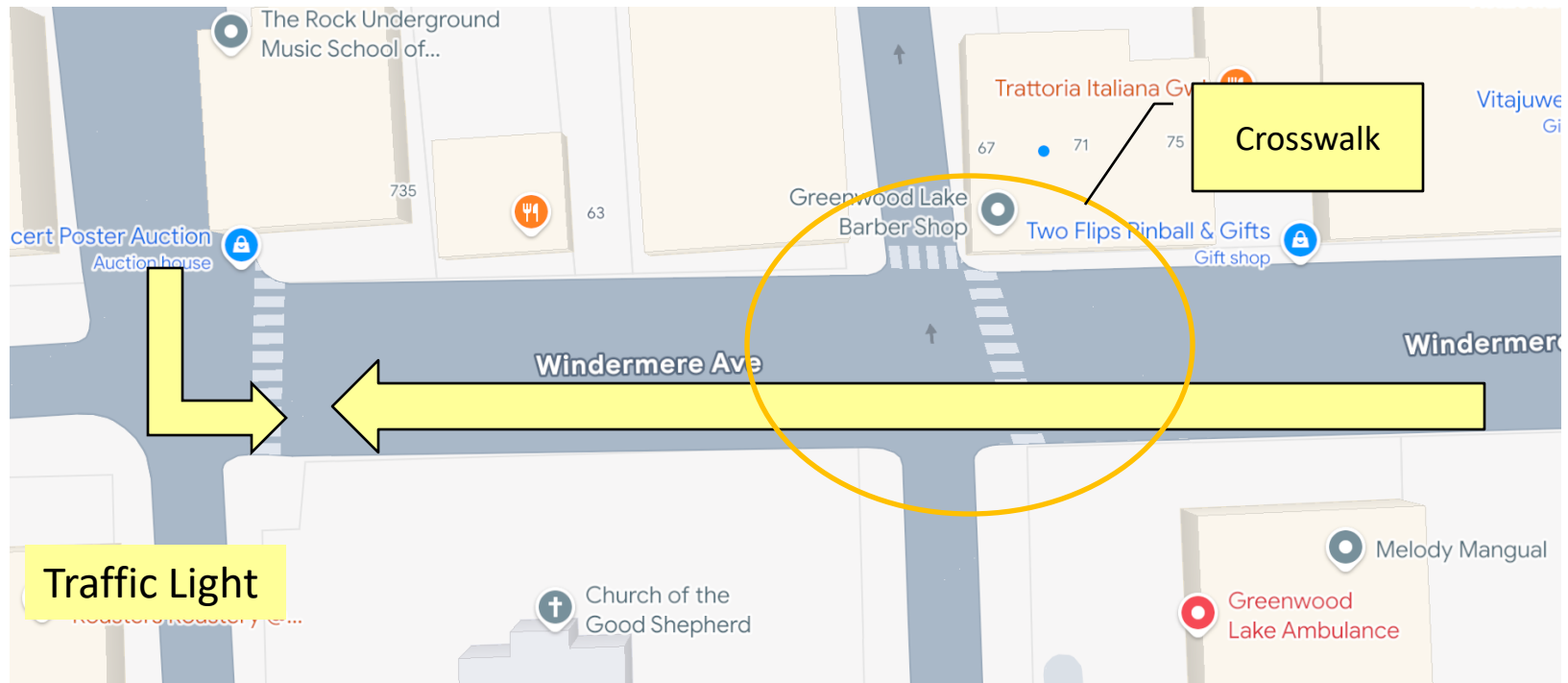


Proposal for School Safety Zone along Windermere Ave and Jersey Ave

Concerns

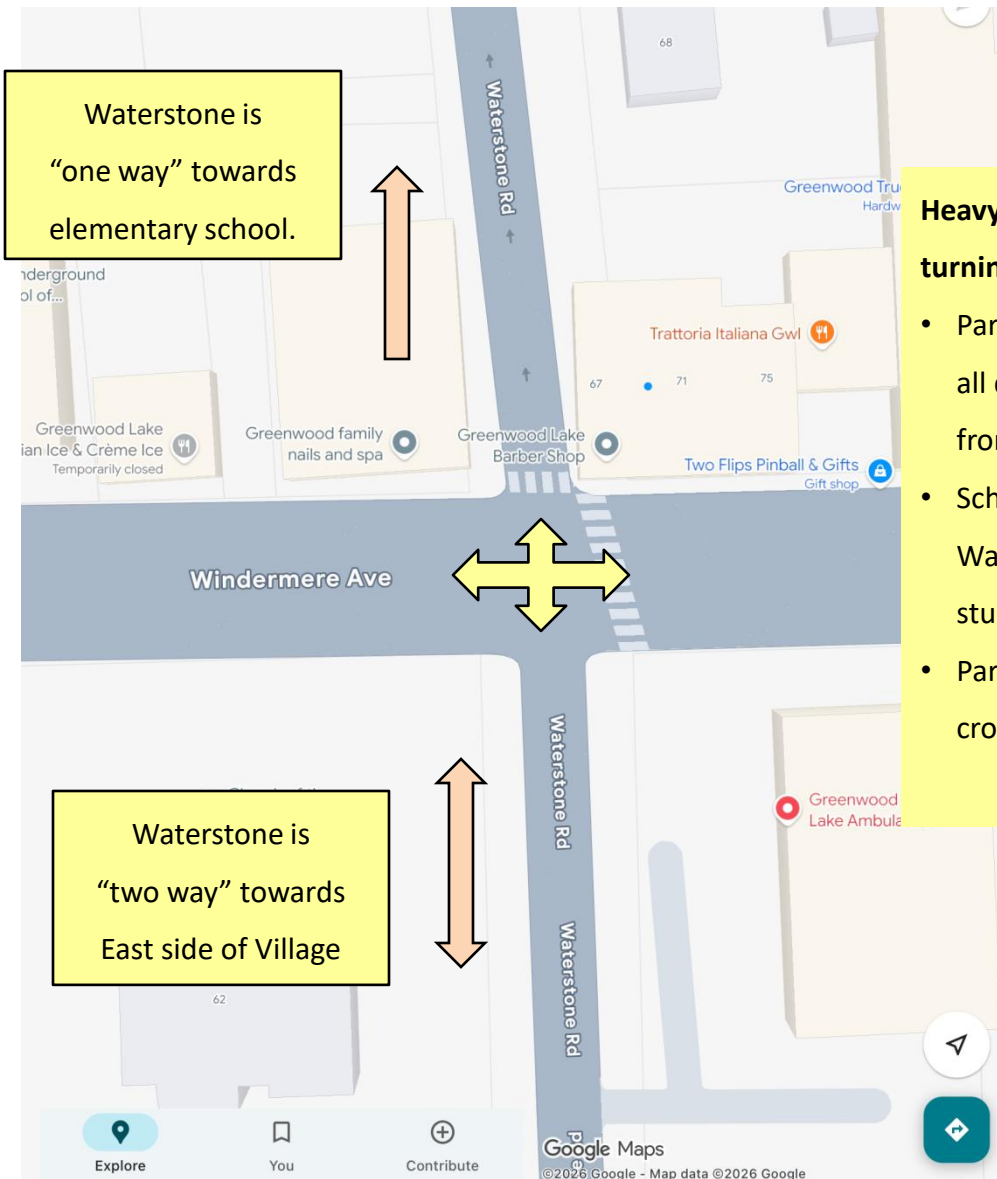
Unsafe/excessive speed combined with driver inattention.

- Vehicles driving south on Windermere Ave race at high speed to make the traffic light during morning and afternoon rush hours.
- Vehicles turning north onto Windermere from Jersey Avenue begin increasing speed once turned on Windermere, heading directly towards the crosswalk intersection at Waterstone Rd.
- Happens during the same times when parents are dropping off children in the morning and picking them up in the afternoon (driving and walking), and when there is heavy school bus activity taking place.
- Everything comes together like a perfect storm!

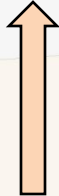


Excessive speed and driver inattention during this time.

- Vehicle and commercial traffic “race” down Windermere to “make” the traffic light at the intersection of Jersey Ave.
- Drivers turning onto Windermere from Jersey Ave start increasing speed as soon as they turn the corner, heading directly towards intersection and crosswalks.



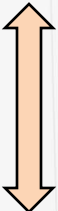
Waterstone is
“one way” towards
elementary school.

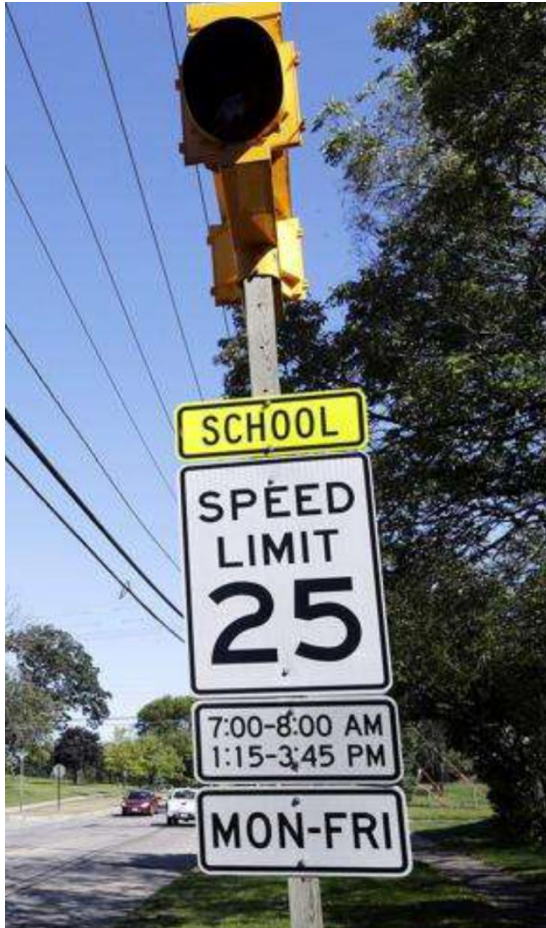


Heavy volume of vehicle and commercial traffic turning onto Windermere and Waterstone.

- Parents turning onto Waterstone coming from all directions, to drop off and pick up students from the elementary school.
- School busses transiting Windermere and Waterstone in both directions, dropping off students.
- Parents and children walking to school, using crosswalks in the morning and afternoon.

Waterstone is
“two way” towards
East side of Village





Zone should be marked with reduced speed limit signs and flashing lights to alert drivers when zone is active.

Recommended hours:

8:00 to 9:00 am

3:00 to 4:00 pm

Monday - Friday

(Example Signage)



Speed Safety Zone should start just before Oak St. on Windermere, continue to the traffic light and continue around Jersey Ave to Vine St, protecting school crosswalks (circled). Arrows indicate where flashing lights and speed limit signs would be placed.

Concerns

Views obstructed/limited sight lines for both pedestrians and drivers.

- Vehicles regularly block and/or park in “no parking” zones close to corners.
- Pedestrians entering the crosswalk can’t see on-coming traffic until they are in the traffic lane.
 - Drivers can’t see them entering the crosswalk from the sidewalk either.
- Parents driving and turning onto Waterstone Road towards the elementary school have little to no sight lines when vehicles are parked in “no parking zones;” can’t see children or pedestrians walking / playing on Waterstone Road until it’s too late.
- School busses turn north onto Windermere Ave from Waterstone Road have a difficult time making the turn when vehicles are parked in “no parking zones.”

Visibility Issue - Sight line
What parents see turning onto
Waterstone Rd.
towards elementary school.





How cars currently park, ignoring curb markings and blocking sight lines.

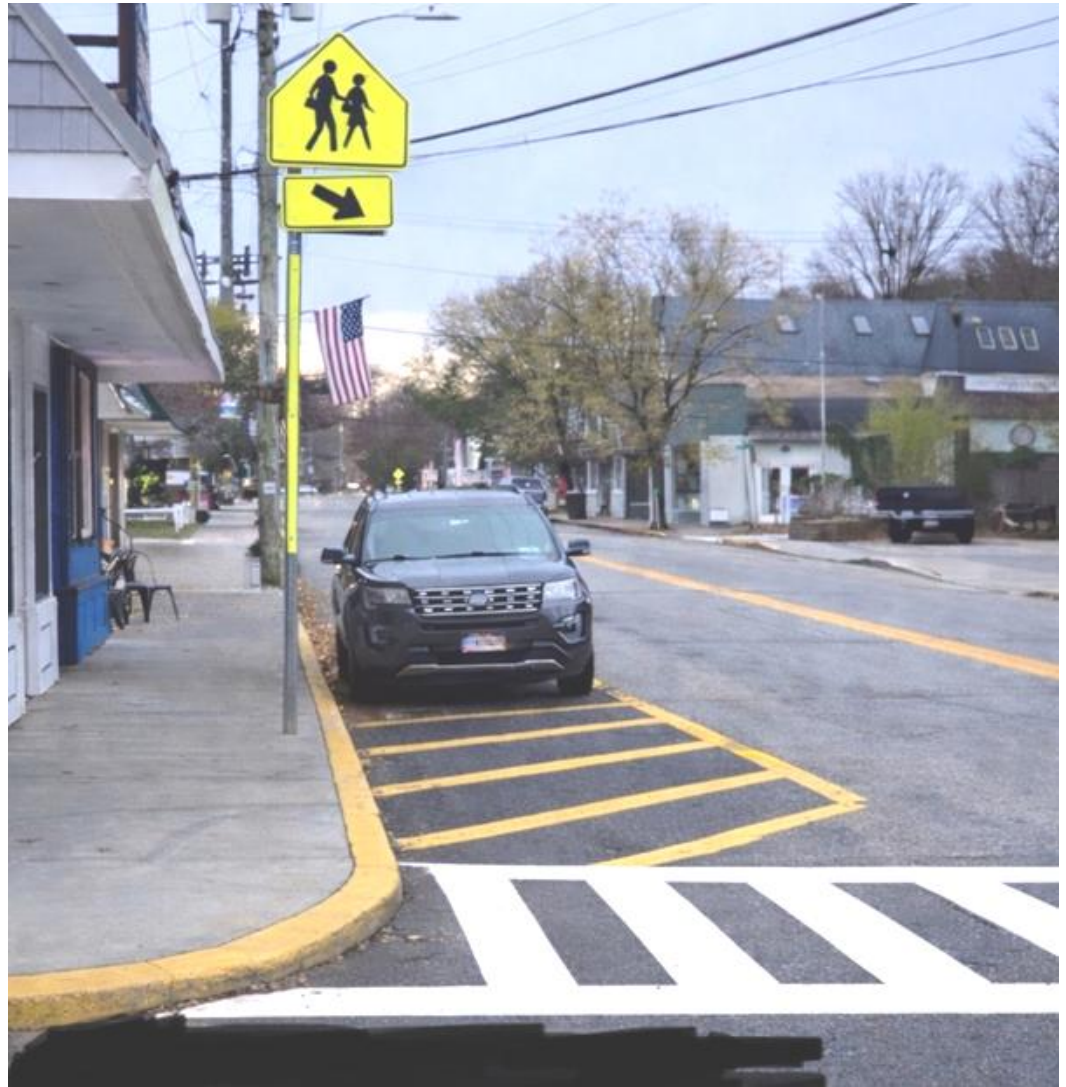


What sight lines look like when approaching Waterstone, when a vehicle blocks corner.

- What parents see when they turn down Waterstone towards the school.
- Parents and children using crosswalk can't see on-coming traffic until they are directly in traffic lane.
- Drivers can't see children entering crosswalk from the sidewalk until it's too late.

Proposal is to have better pavement striping to stress “no parking” zone.

This is a computer generated image to show an example of pavement striping.

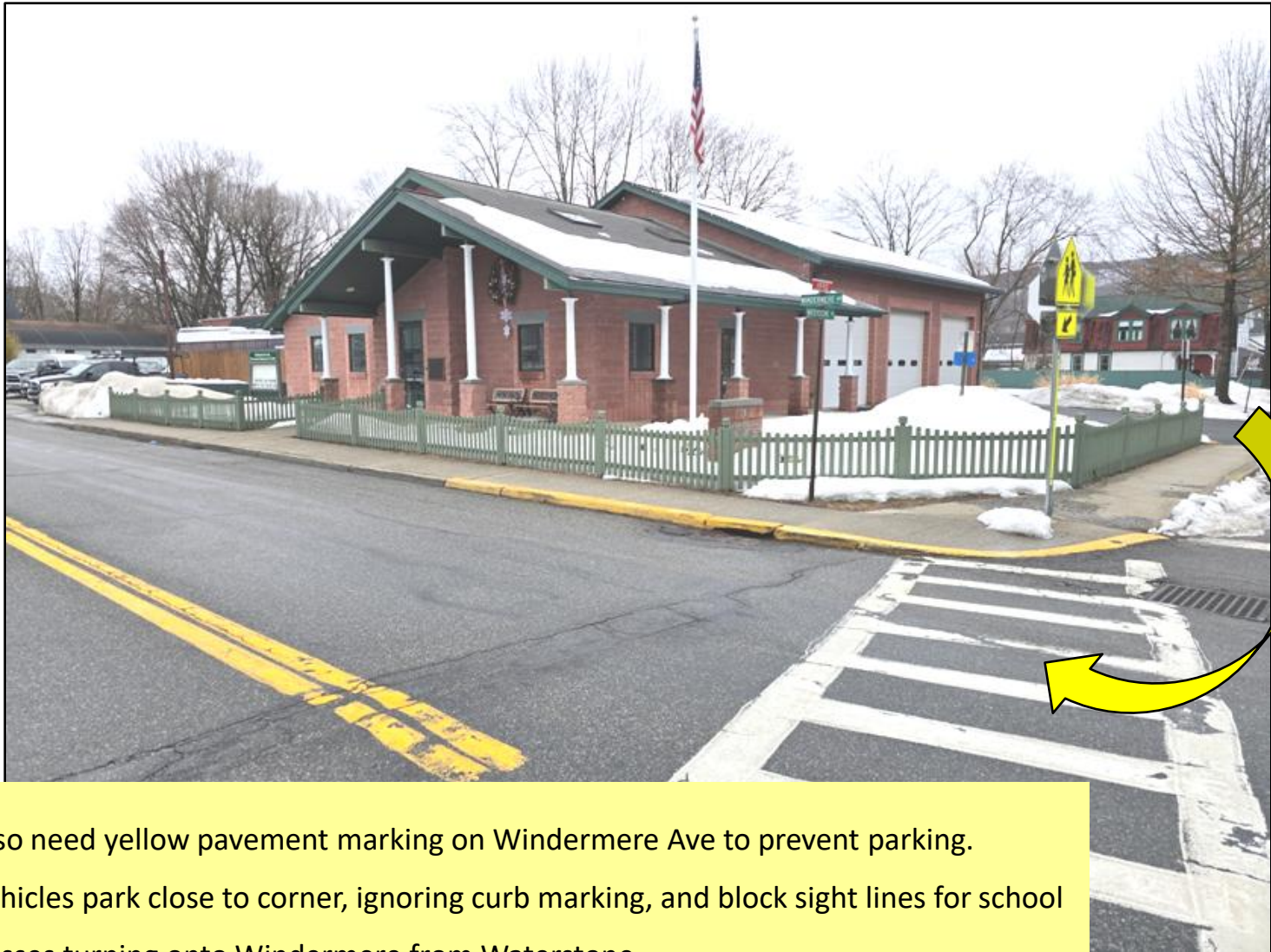




- Visibility Issue - Sight line issues, same intersection coming from other direction.
- What parents see turning onto Waterstone Rd. towards elementary school.
- Currently there is **NO** curb and pavement striping to identify no parking zone on corner (need both!).



How cars currently park, blocking sight lines.
Nothing to prevent them from parking close to corner.



Also need yellow pavement marking on Windermere Ave to prevent parking. Vehicles park close to corner, ignoring curb marking, and block sight lines for school buses turning onto Windermere from Waterstone.



This is a computer generated image showing pavement striping to stress it's a no-parking zone.

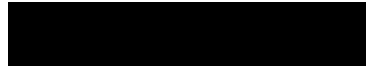


This is a computer generated image showing where rapidly flashing beacon lights could go, along with existing school crossing signs, that would be activated during the hours when the school safety zone is active.

(They would face traffic traveling both directions on Windermere)

Thanks for your consideration.

Contact:



Village Crossing Guard



School Safety Zone – Talking Points

What is being suggested?

- Create a “school safety zone” along Windermere Ave.
- Increase safety for the crosswalk at the intersection of Windermere Ave and Waterstone Road.

What are some of the concerns?

- Unsafe/excessive speed combined with driver inattention.
 - Vehicles driving south racing to make the traffic light during morning and afternoon rush hours.
 - Vehicles turning onto Windermere from Jersey Avenue begin increasing speed once turned on Windermere, heading right towards the crosswalk intersection.
 - Happens during the same times when school is starting, when students are being released, and when there is heavy school bus activity taking place.
- Views obstructed/limited sight lines (for both pedestrians and drivers)
 - Vehicles park in “no parking” zones close to corners.
 - Pedestrians entering the crosswalk can’t see on-coming traffic until they are in the traffic lane.
 - Parents drivers turning onto Waterstone Road towards the elementary school have little to no sight lines when vehicles are parked in “no parking zones;” can’t see children or pedestrians walking / playing in street until it’s too late.
 - School busses turn north onto Windermere Ave from Waterstone Road have a difficult time when vehicles are parked in “no parking zones.”

Where the “zone” could be located:

- Start prior to Elm Street on Windermere Ave.
- End at the intersection of Windermere Ave and Jersey Ave.
- Should also continue around to Jersey Ave to Vine Street, protecting other school crosswalk.

When:

- Weekdays: Mornings, 8:00 am to 9:00 am and afternoons, 3:00 pm to 4:00 pm

What is needed/suggested:

- Increase pavement markings to create higher visibility “no parking zones” and improve sight lines.
- Create a reduced speed limit zone during school hours.
- Add flashing beacons to existing signage at the crosswalk on Windermere and Waterstone.