

PRODUCT BROCHURE

WPC Wall Panel

Anti-collision Wall Panel

WPC Splicing Board

Class A Fireproof Board

Fluted Wall Panel

Aluminum Alloy Fitting

WPC HD Printing Wall Panel

SPC Background Wall

SPC Waterproof Wall Panel

SPC Stone Crystal Flooring

Plastic Wood Flooring

CONTENTS

WPC Wall Panel

Anti-collision Wall Panel

WPC Splicing Board

WPC Hollow Seamless Locking Board

Class A Fireproof Board

Fluted Wall Panel

Aluminum Alloy Fitting

WPC HD Printing Wall Panel

SPC Background Wall

UHD Continuous Pattern - GILDING SERIES

UHD Continuous Pattern - WHITE

UHD Continuous Pattern - GREY

UHD Continuous Pattern - BLACK

UHD Continuous Pattern - WARM LUXURY STONE

UHD Continuous Pattern - BLUE GREEN LUXURY STONE

UHD Continuous Pattern - WOOD GRAIN

SPC Waterproof Wall Panel

SPC Stone Crystal Flooring

Plastic Wood Flooring

COMPANY PROFILE

Hubei Shezhi New Construction Materials Co.,Ltd is located in Wuhan City, Hubei Province. It is a production-oriented enterprise focusing on research and development, production, design and sales of new interior decoration materials. After years of efforts and continuous innovation, the company's products are spread all over the country and radiate many countries and regions around the world.

The main products of the factory include bamboo charcoal wood veneer, A-level fire board, metal plate, mirror plate, solid wood grille with the same color, invisible door, custom background wall, all kinds of supporting lines, etc., in order to create doors, walls, cabinets, grilles and other products with the same color leading technology, widely used in home improvement and large engineering projects (including large office, hotel, hospital, school, KTV, etc.).With a complete production line, advanced machinery and equipment, professional technical team, scientific management mode, the factory direct channel business and domestic and foreign strategic partners, to achieve a win-win situation, obtain a high degree of recognition from domestic and foreign customers and the market. The company adhering to the unremitting innovation and honesty to treat people, hand in hand win-win service purpose, with the joint efforts of all employees, "Shezhi" brand for the decoration industry to provide high-quality high-end interior decoration products, products benefit millions of users at home and abroad, to provide customers with light "luxury" set "delicacy" idealists.



BUSINESS DISTRIBUTION

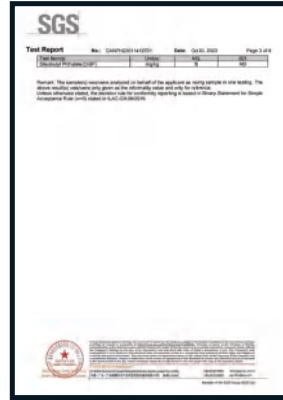
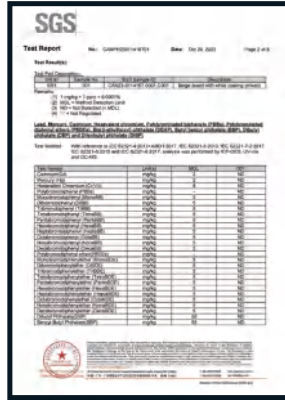


In today's increasingly globalization, our company follows the pace of the times, actively explore overseas markets, products are exported to the United States, the United Kingdom, Switzerland, India, Greece, Pakistan, Poland, South Korea, Singapore, Malaysia and other countries. Welcome to visit our factory and exhibition hall.

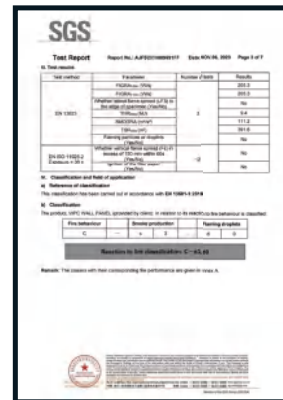
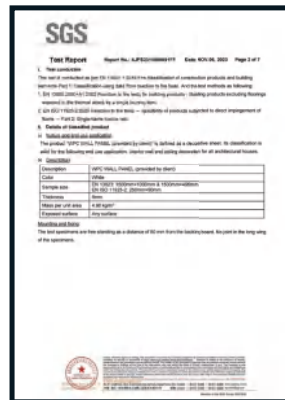


AUTHORITY CERTIFICATION

▼ SGS Environmental Protection Test Report



▼ SGS Flame Retardant Test Report



▼ CE - Verification Of Conformity



FACTORY STRENGTH

Shezhi modern factory is equipped with world-class modern production equipment and storage facilities, there are a number of intelligent production lines, is a research and development and production in one of the advanced new material manufacturing factory, can achieve cutting, PUR tectorial membrane and other links one-stop automatic production and real-time monitoring.



Mature Technology

1. Standardized, automated technology design
2. Real-time monitoring
3. PLC online control



Equipment Operation

1. Famous brands, professional maintenance
2. Cutting, PUR tectorial membrane and other links have realized one -stop automatic production real-time monitoring



Producing Workshops

1. Professional streamlined production line
2. Multiple intelligent production lines



Environment

Strict implementation of environmental and safety regulations. Keep executing 5S and lean production.

WPC Wall Panel

- Wood grain series
- Solid color series
- Stone grain series
- Cloth pattern series
- Metal series
- Mirror series



Thickness:5mm&8mm

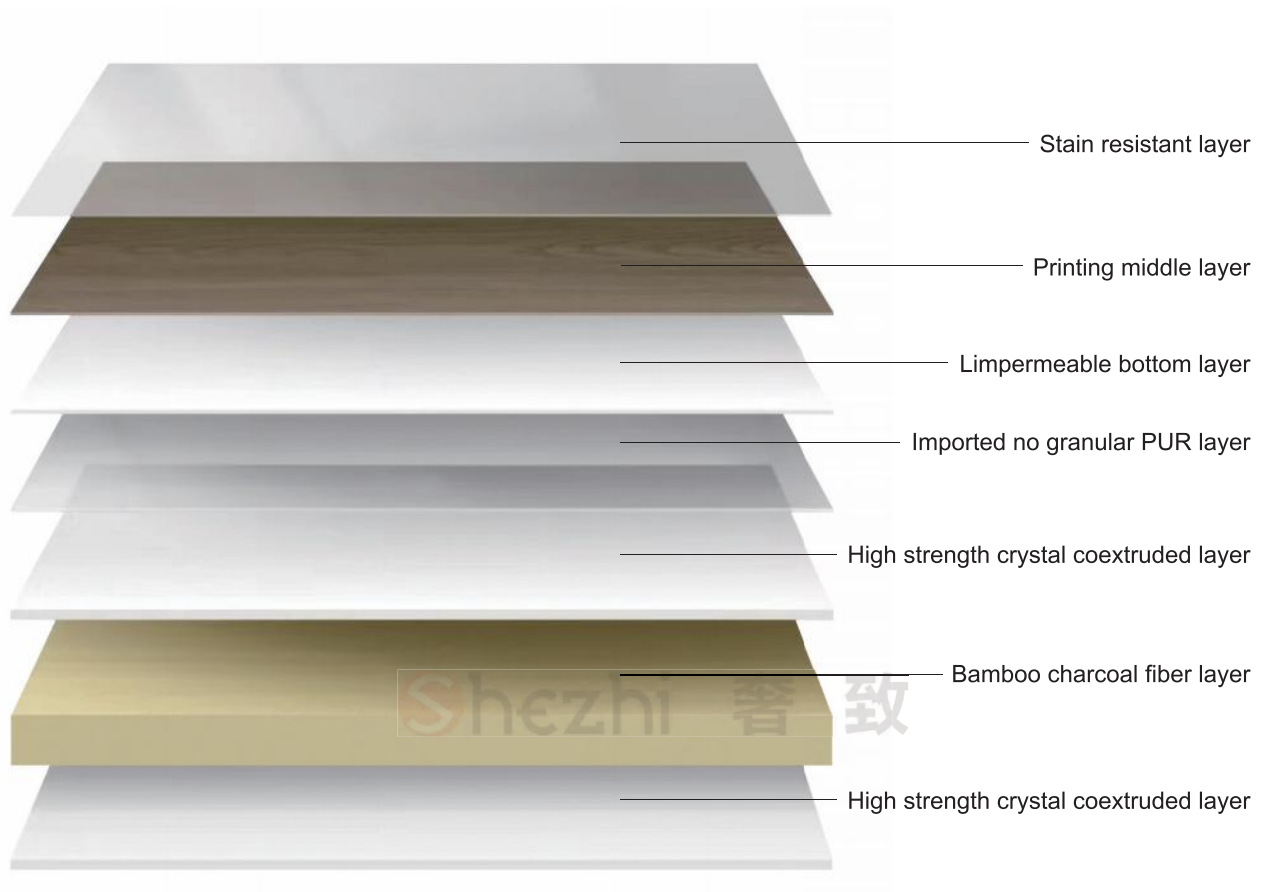


Bending and shaping



Waterproof and moisture proof

Product structure diagram



Product specification

Name	WPC wall panel	
Width	1220mm(Normal)	1100mm(Container order size)
Length	2440mm/2600mm/2800mm/customized length under 6000mm	
Thickness	5mm/8mm	
Ep rating	E0	
Fire rating	B1	
Performance	Waterproof & Bendable	



CASE APPRECIATION

Wood grain series

Wood grain series colors

For more color details, please check our color card.



T9012



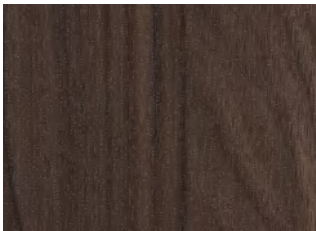
T9015



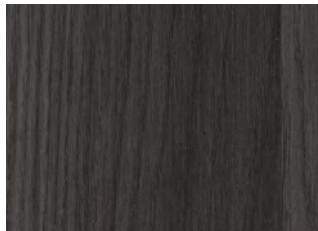
T9016



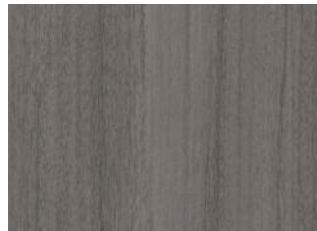
T9033



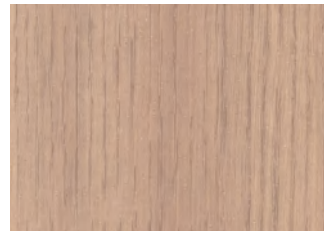
T9041



T9050



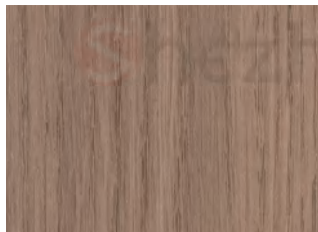
T9051



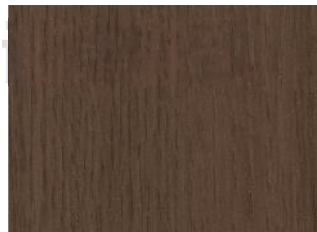
T9052



T9053



T9054



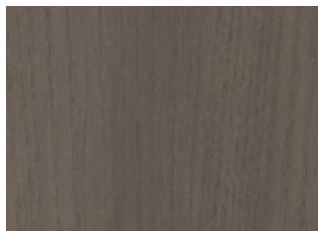
T9056



T9057



T9058



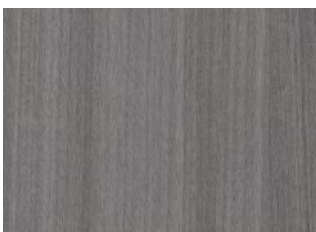
T9059



T9110



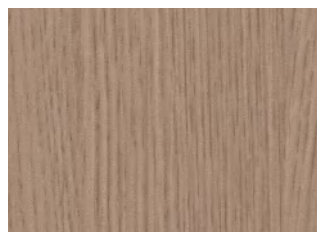
T9112



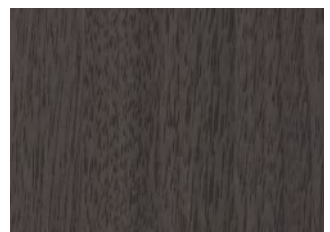
T9113



T9200



T9305



T9308



CASE APPRECIATION

Solid color series

Solid color series colors

For more color details, please check our color card.



T8003



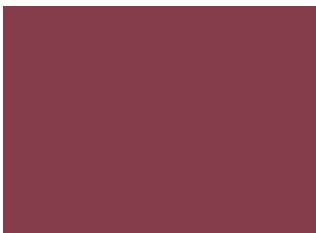
T8005



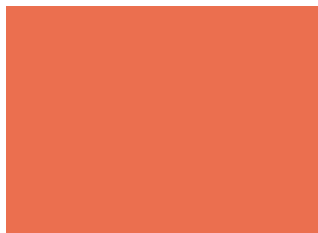
T8006



T8008



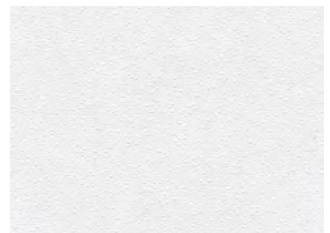
T8010



T8012



T8014



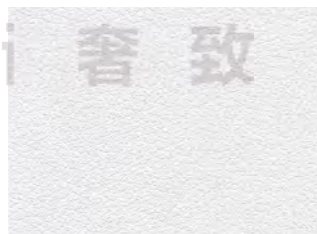
T8017



T8027



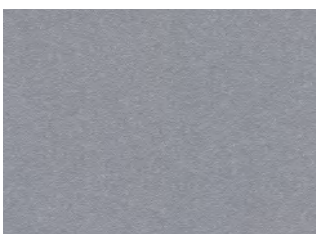
T8107



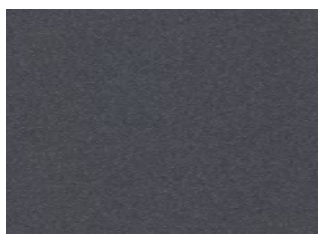
T8108



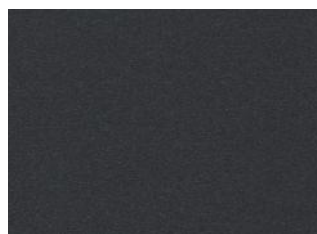
T8109



T8110



T8111



T8112



T8203



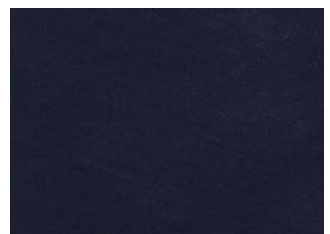
T8204



T8310



T8311



T8312



CASE APPRECIATION

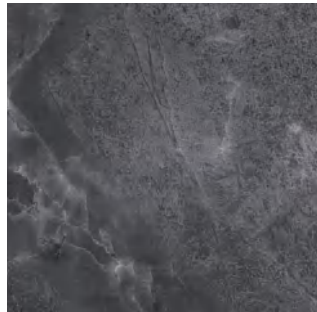
Stone grain series

Stone grain series colors

For more color details, please check our color card.



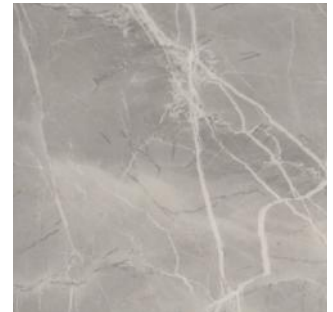
T3019



T3024



T3025



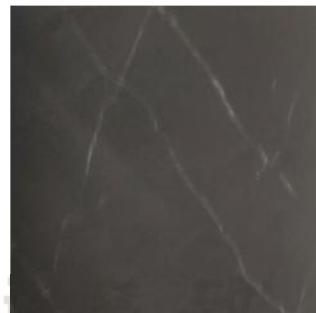
ZFS5005-1



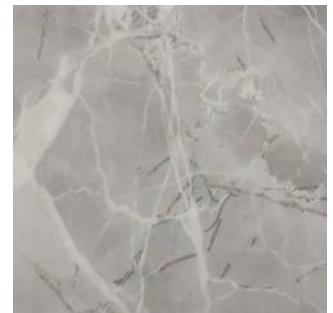
ZFS5005-2



ZFS5005-3



ZFS5005-4



ZFS5006-1G



ZFS5006-2G



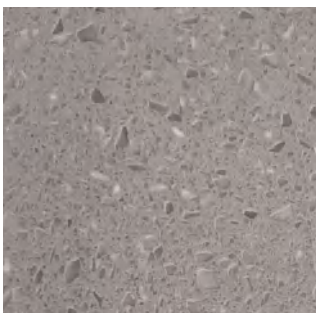
ZFS5006-3G



ZFS5007-1



ZFS5007-2



ZFS5007-3



ZFS5001-3



ZFS5001-4



ZFS5001-5



CASE APPRECIATION

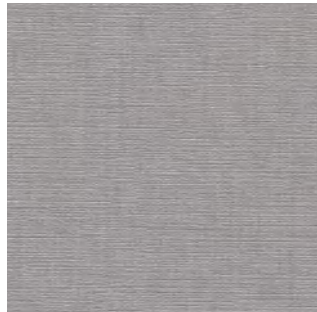
Cloth pattern series

Cloth pattern series colors

For more color details, please check our color card.



T6101



T6102



T6201



T6202



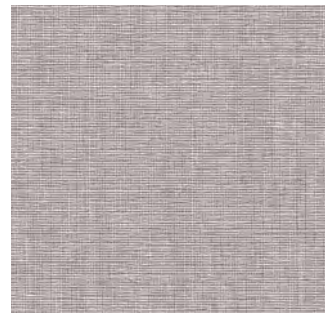
T6301



T6302



T6305



S6026



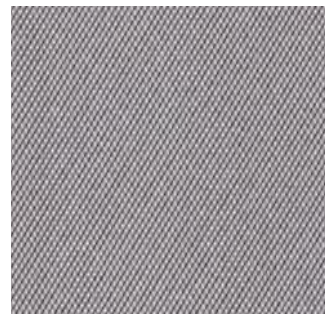
S6030



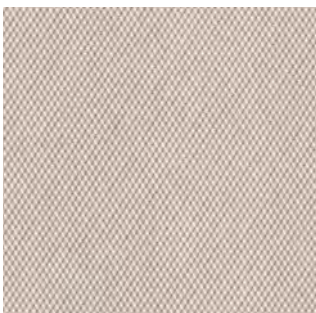
S6035



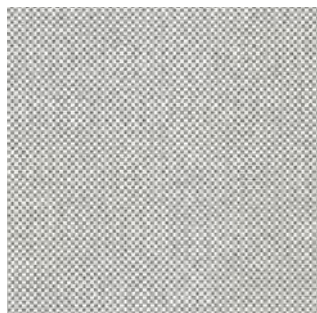
S6036



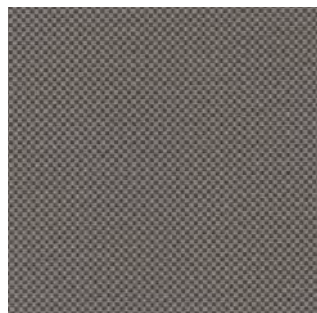
B5010



B5003



B8003



B8007



B1105



SJ2004

CASE APPRECIATION

Metal series

Metal series colors

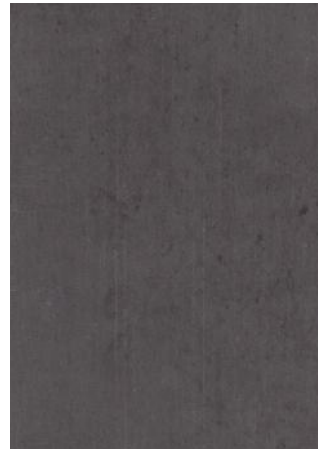
For more color details, please check our color card.



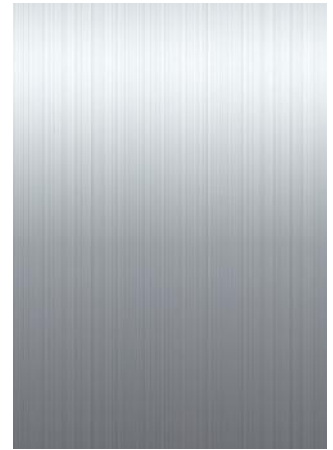
H8301



H8302



H8304



SZ703



SZ705



SZ761



SZ762



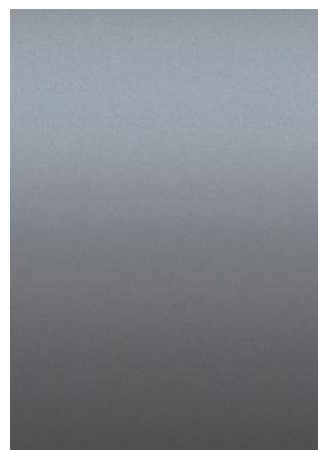
SZ763



SJ2009



SJ2010



SJ2003



SJ2004

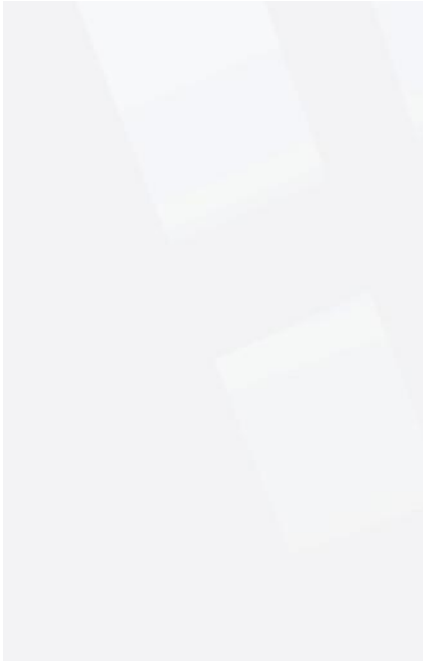


CASE APPRECIATION

Mirror series

Mirror series colors

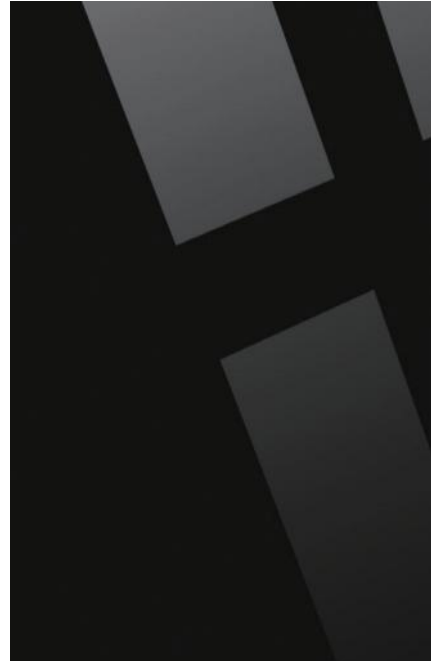
For more color details, please check our color card.



JM03 Mirror white



JM001 Mirror silver

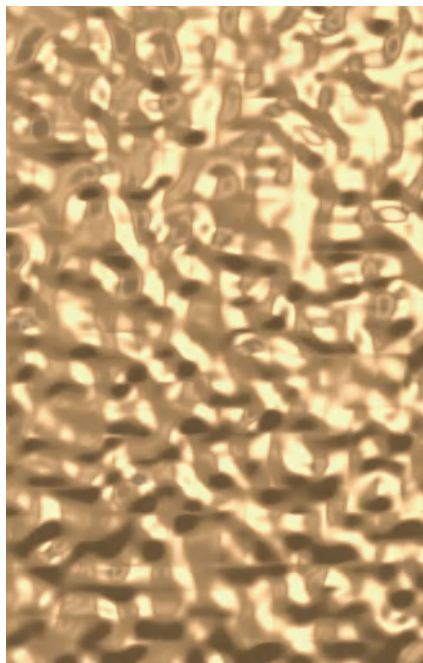


JM002 Mirror black

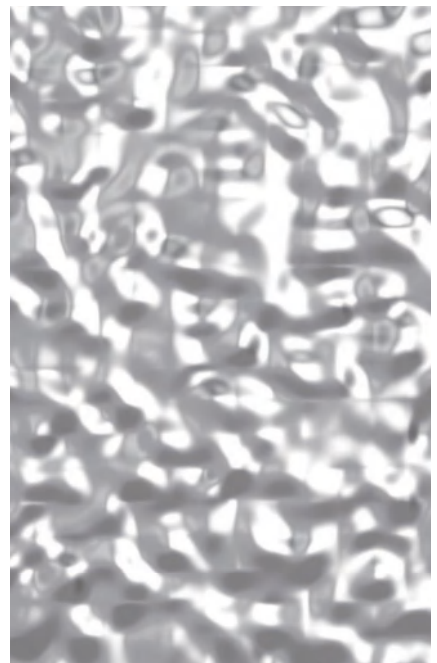
Shezhi 奢致



JM04 Mirror gold



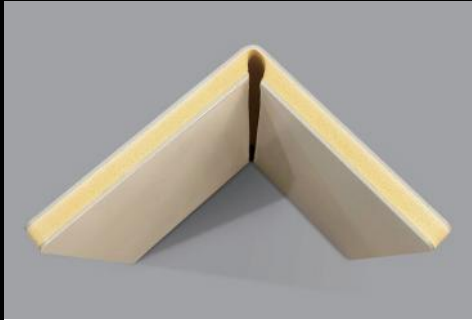
BW001 Big ripple gold



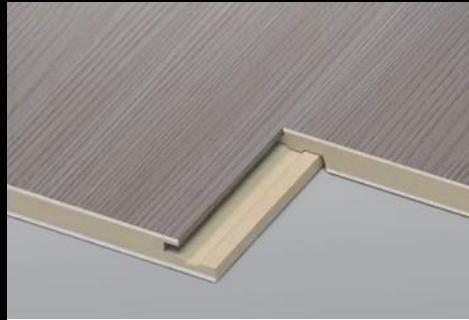
BW002 Big ripple silver

Anti-collision Wall Panel

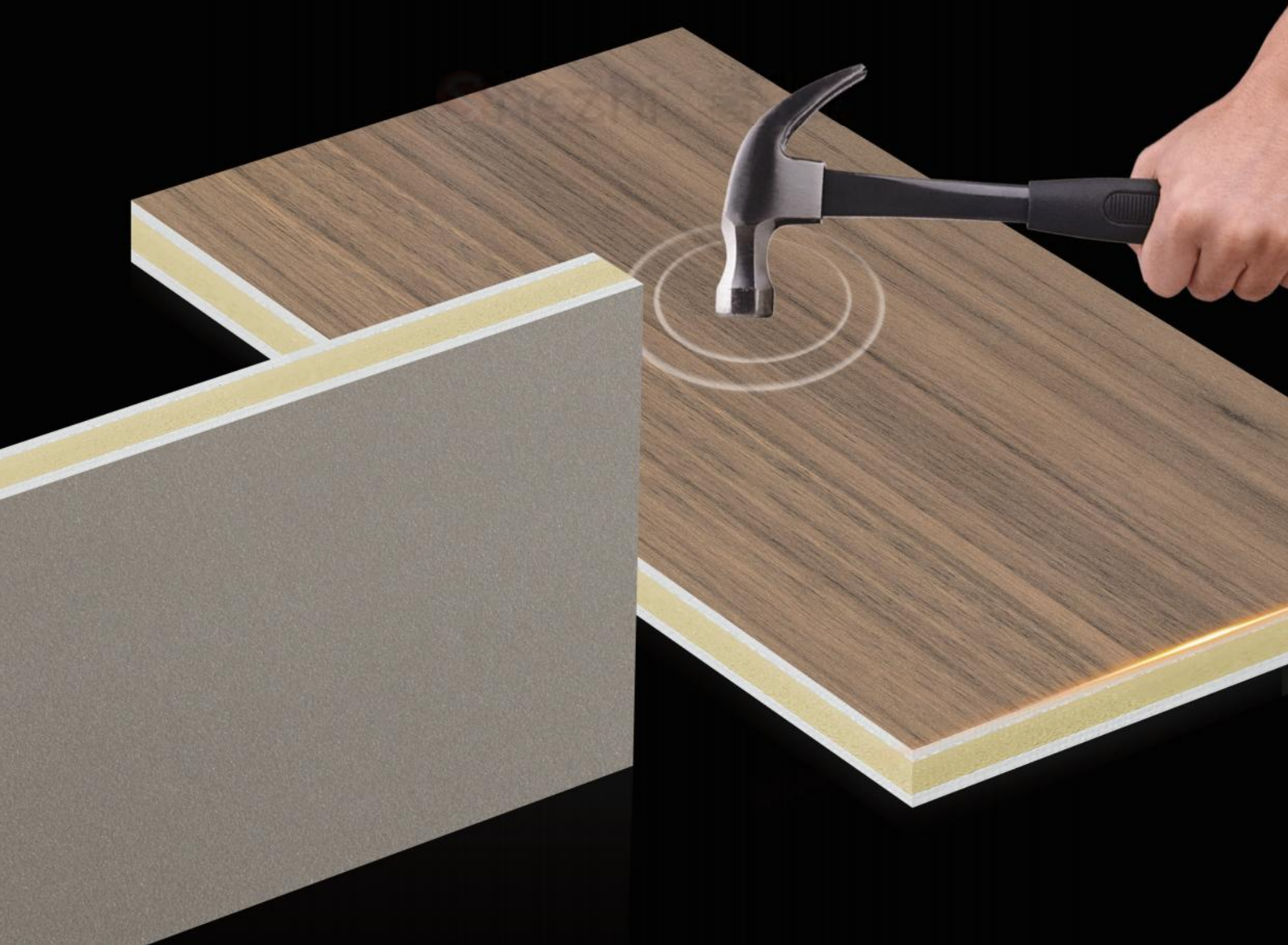
- Wood grain series
- Solid color series
- Stone grain series
- Cloth pattern series
- Metal series
- Mirror series



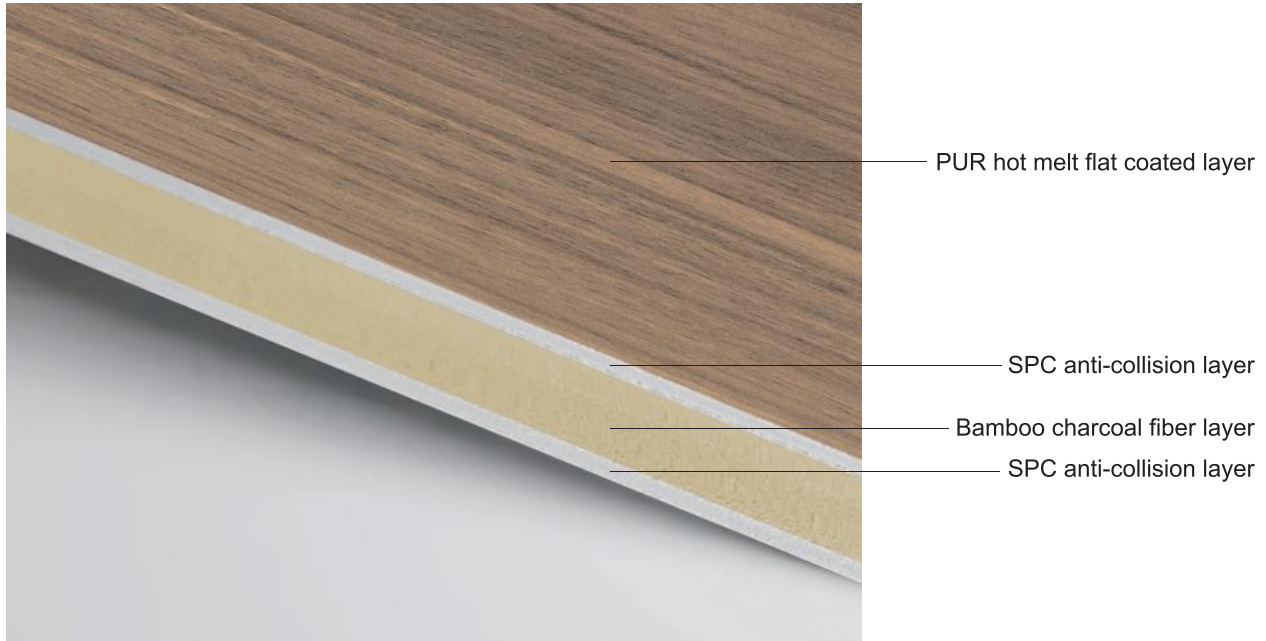
Bending and shaping



Slotted style



Product structure diagram (Double-sided SPC anti-collision layer)



Shezhi 奢致

Product advantage

It has high-strength anti-collision performance, with anti-collision layers on both sides. It is scratch-resistant and wear-resistant, waterproof and moisture-proof, and can be directly installed on the rough wall. It can also bend to do modeling, can do slot splicing.

Product specification

Name	Anti-collision wall panel	
Width	1220mm(Normal)	1100mm(Container order size)
Length	2440mm/2600mm/2800mm/customized length under 6000mm	
Thickness	8mm	
Ep rating	E0	
Fire rating	B1	
Performance	Waterproof & Bendable	

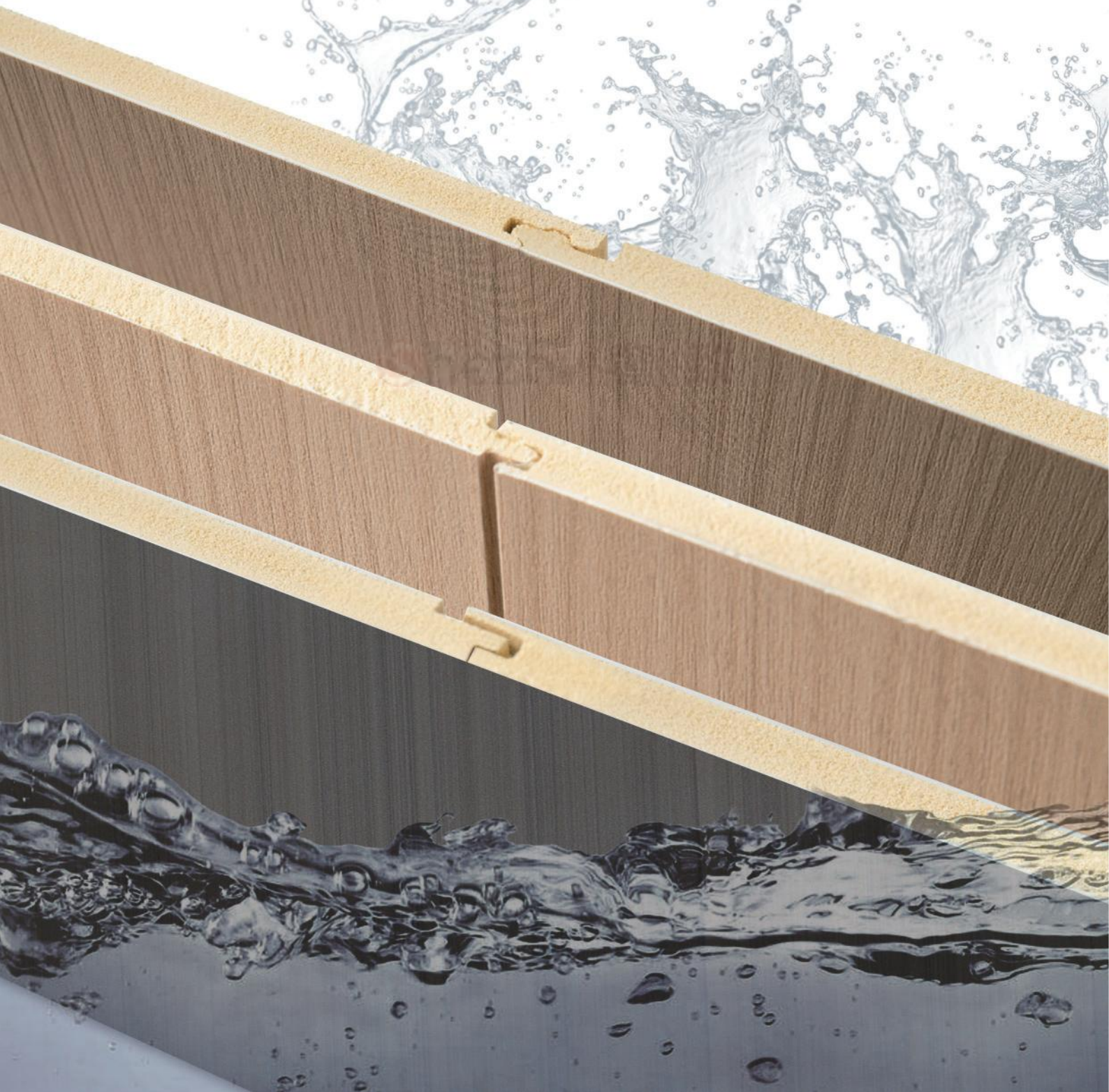
WPC Splicing Board

P-seam board / Seamless locking board:

- Wood grain series
- Solid color series
- Stone grain series
- Cloth pattern series
- Metal series
- Mirror series

U-seam board:

- Wood grain series
- Solid color series
- Stone grain series(T)
- Cloth pattern series(T)



Three styles of splicing board



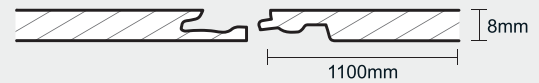
Cross section



P-seam



U-seam



Seamless locking

Product specification

Name	WPC splicing board	
Width	1220mm(Normal)	1100mm(Container order size)
Length	2440mm/2600mm/2800mm/customized length under 3000mm	
Thickness	8mm	
Ep rating	E0	
Fire rating	B1	
Performance	Waterproof & Bendable	

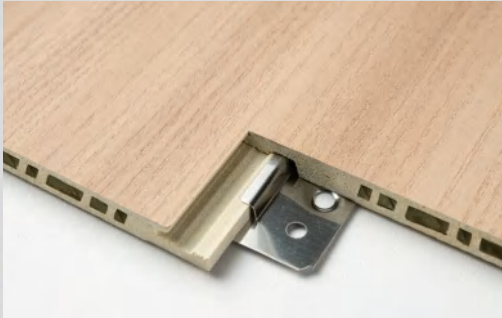
WPC Hollow Seamless Locking Board

Wood grain series

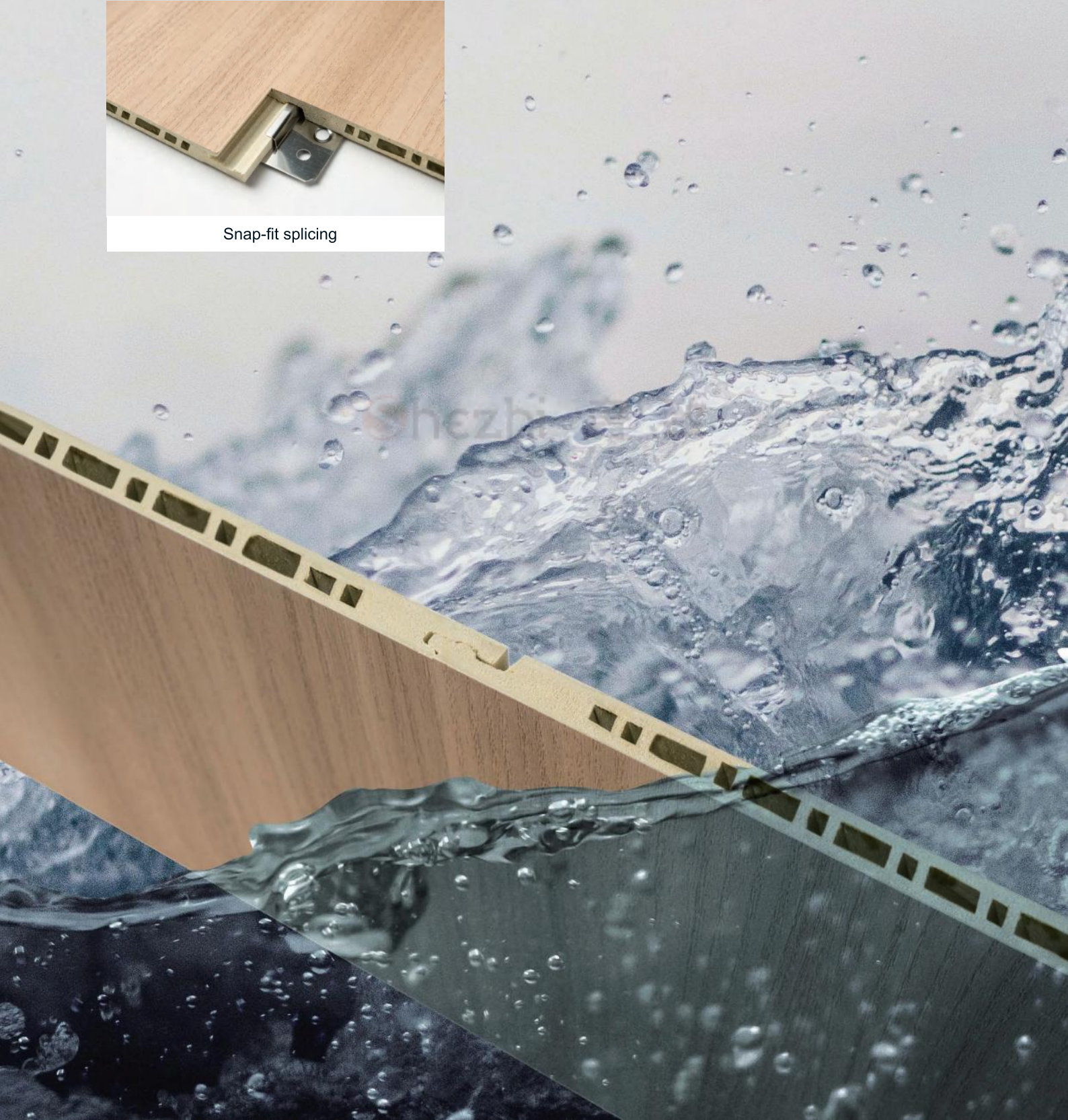
Solid color series

Stone grain series(T)

Cloth pattern series(T)



Snap-fit splicing





Product structure diagram



Locking design, tightly spliced, a seamless effect can be achieved.

Product specification

Name	WPC Hollow seamless locking board
Width	400mm
Length	2800mm/3000mm
Thickness	9mm
Ep rating	E0
Fire rating	B1
Performance	Waterproof & Bendable

Class A Fireproof Board

- Wood grain series
- Solid color series
- Stone grain series
- Cloth pattern series
- Metal series
- Mirror series

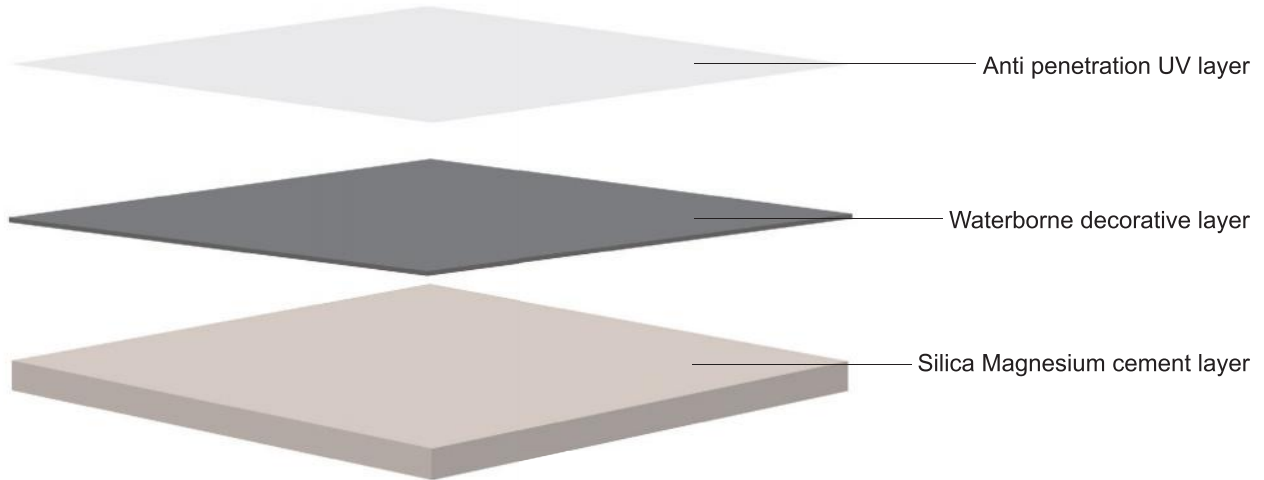
800°C , no burning / 1200°C , no flames



CLASS A FIREPROOF BOARD



Product structure diagram



Photo



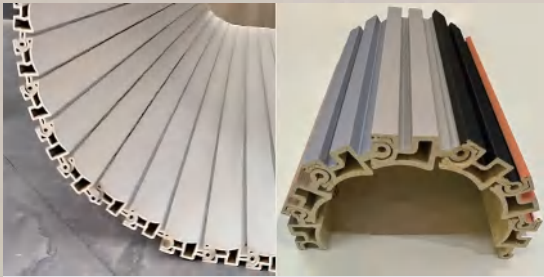
Product specification

Name	Class A fireproof board
Width	1220mm
Length	2440mm
Thickness	5mm/8mm
Ep rating	E0
Fire rating	A
Performance	Class A fireproof

Fluted Wall Panel

- Wood grain series
- Solid color series
- Stone grain series(T)
- Cloth pattern series(T)

60 Rotating grille panel



inner arc and outer arc

Hollow grille light strip



hollow grille light strip+lamp bead+WPC wall panel

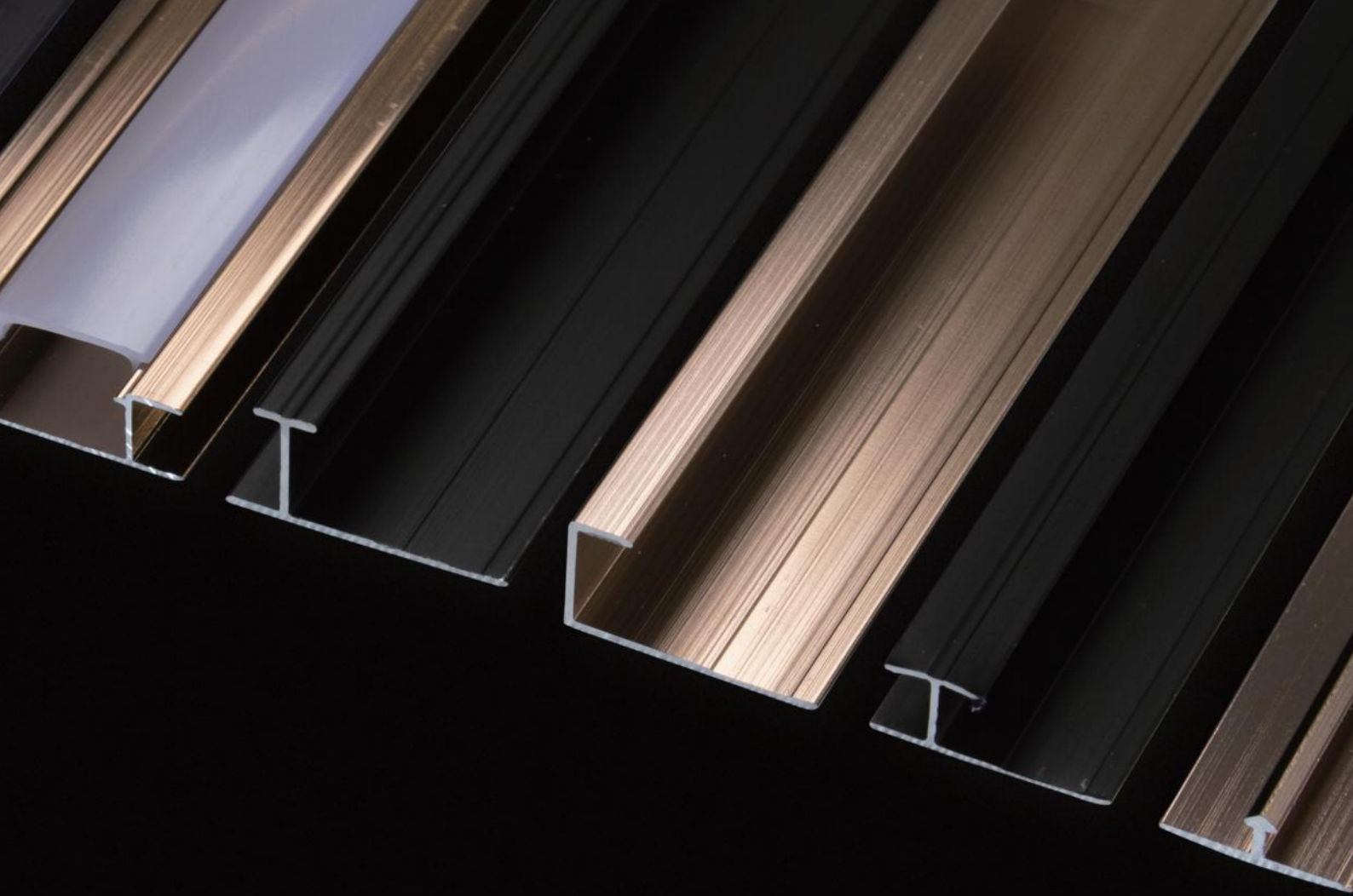
Shezh 致



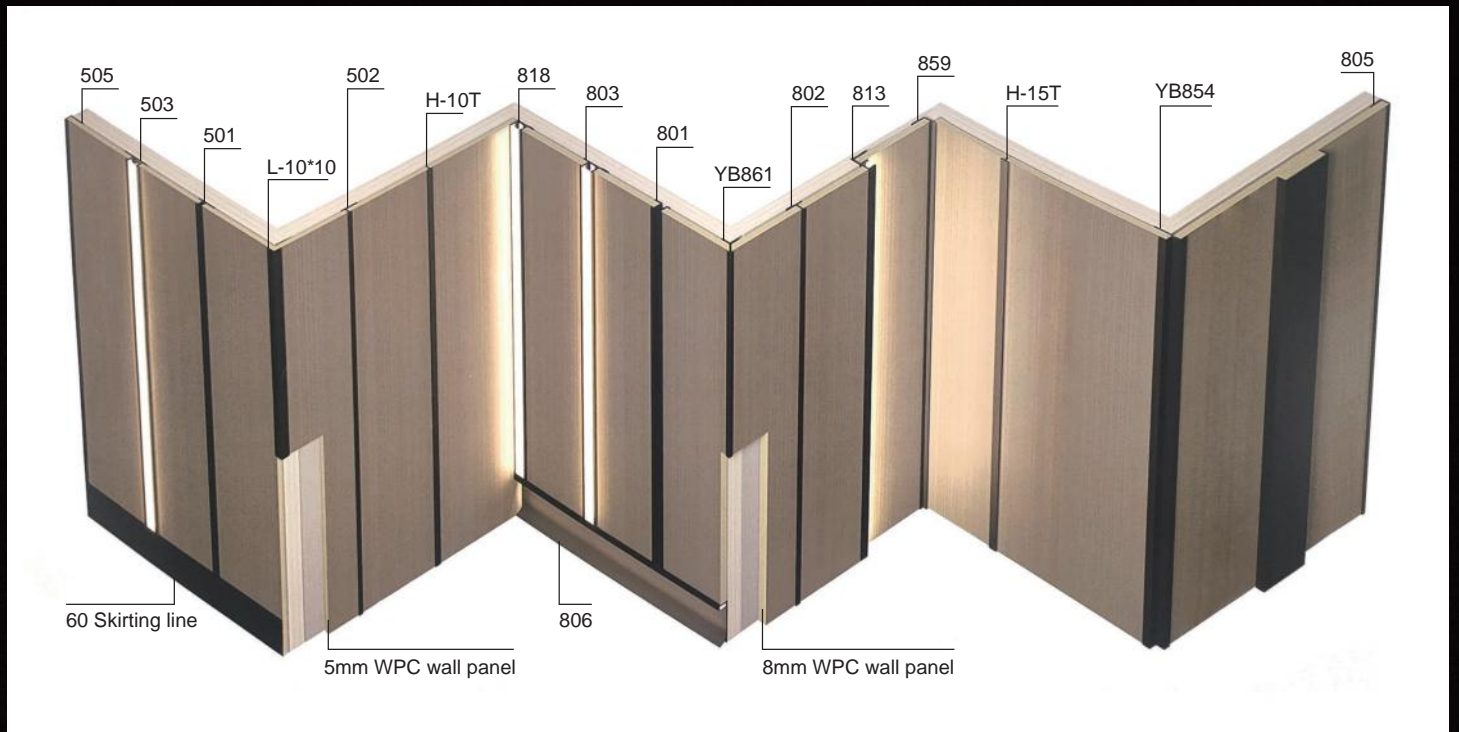
FLUTED WALL PANEL



Picture	Name	Cross section	Size(mm)	Performance
	140 Large solid grille		140*15*2800	waterproof
	145 Solid small grille		145*8*2800	waterproof
	135 Mini grille		135*12*3000	waterproof
	152 Small inner arc grille		152*13*3000	waterproof
	158 Arc fluted grille		158*15*3000	waterproof
	170 Hollow fluted wall panel		170*23*3000	waterproof
	40 Inner arc solid grille		53*16*3000	waterproof
	70 Inner arc solid grille		70*16*3000	waterproof
	60 Rotating grille panel		60*25*3000	waterproof
	Hollow grille light strip		20*20*3000	waterproof

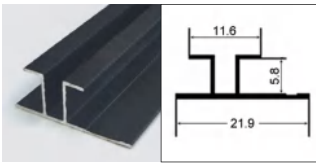


Aluminum Alloy Fitting

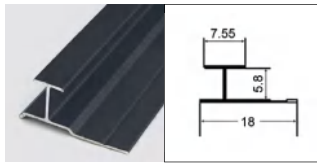


ALUMINUM ALLOY FITTING

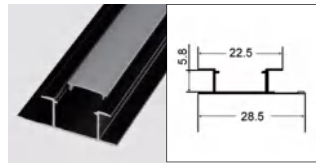
Color: Matte black / Rose gold



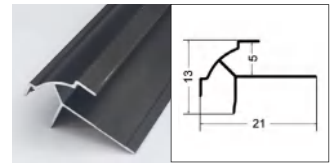
501 Duplex line



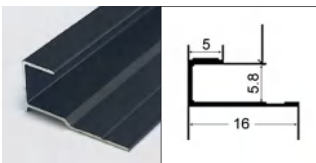
502 I-shaped line



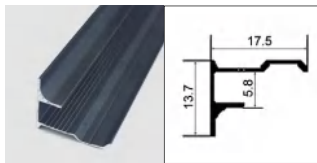
503 Light strip duplex line



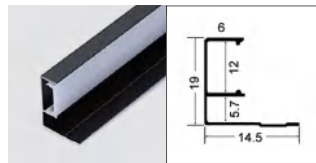
504 External corner line



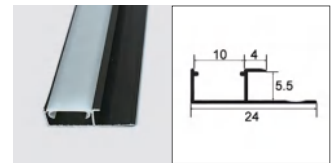
505 Closing line



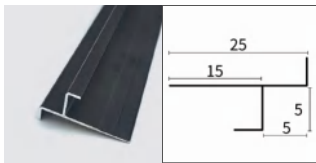
509 Inner corner line



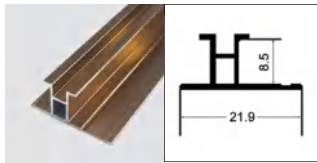
513 Light strip closing line



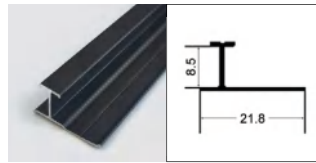
518 Side light strip



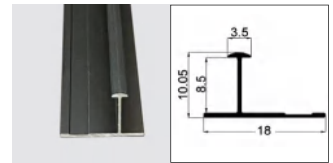
YB574 Notch external corner line



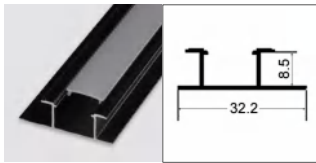
801 Open I-shaped line



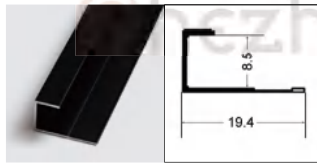
802 I-shaped line



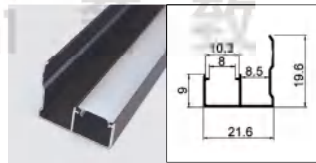
LT-A3 I-shaped line



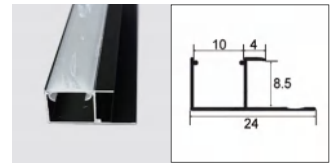
803 Light strip duplex line



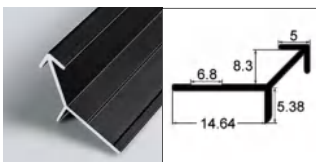
805 Closing line



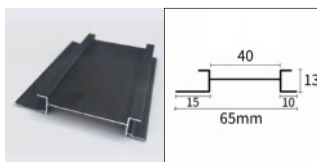
813 Light strip closing line



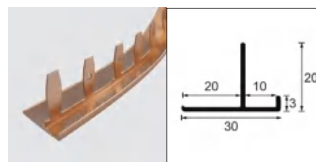
818 Side light strip



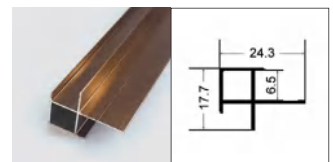
YB861 Sharp angle line



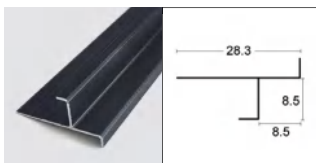
G8940 Waist line



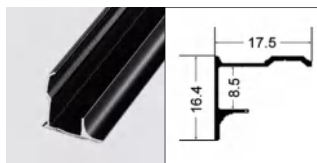
Universal curved edge line



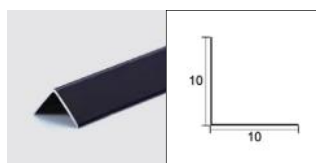
804 External corner line



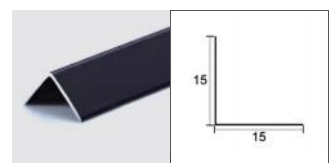
YB854 Notch external corner line



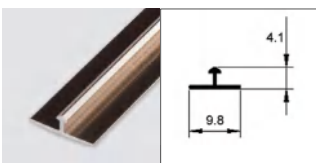
859 Inner corner line



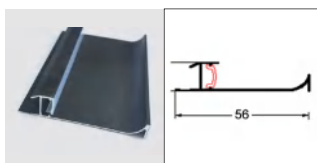
L-10x10



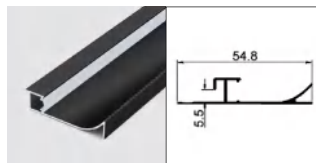
L-15x15



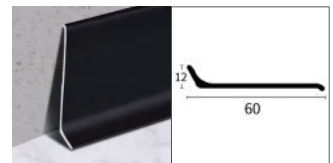
H-10T



806 Light strip skirting



506 Light strip skirting



60 Skirting line

WPC HD Printing Wall Panel



Waterproof



Customizable



HD



Easy to maintain

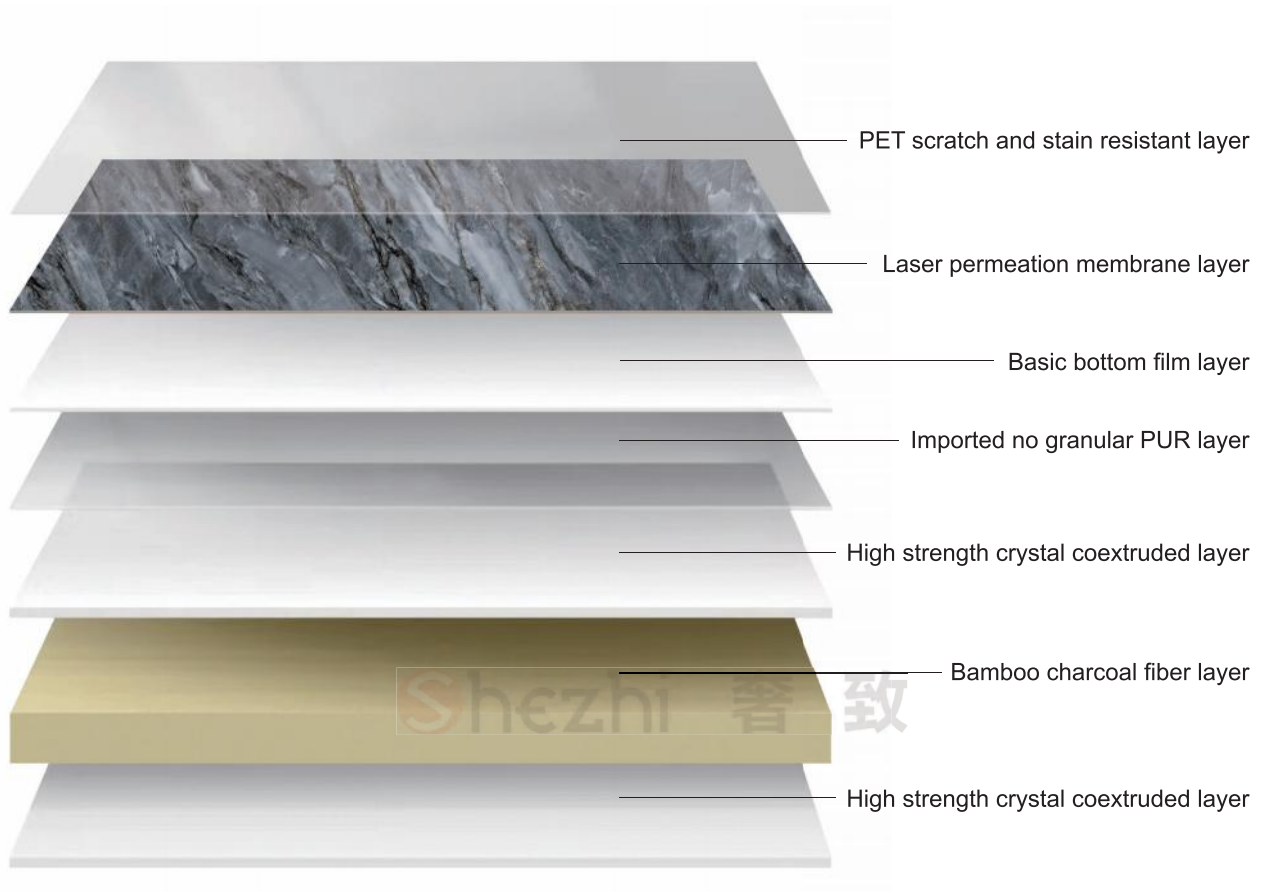


Bendable



Shezhi 奢致

Product structure diagram



Product specification

Name	WPC HD printing wall panel
Customized size	Length≤3000mm , Width≤1200mm
Thickness	5mm/8mm
Surface	Glossy/Matte
Ep rating	E0
Fire rating	B1
Performance	Waterproof & Bendable

SPC Background Wall



Waterproof



Customizable



HD



Easy to maintain



Super Rigidity



Product structure diagram



Product specification

Name	SPC background wall
Customized size	Length≤3000mm , Width≤1200mm
Thickness	5.5mm
Surface	Glossy/Matte
Ep rating	E0
Fire rating	B1
Performance	Waterproof

UHD Continuous Pattern- GILDING SERIES

HD Printing Wall Panel

SPC Background Wall





UHD CONTINUOUS PATTERN-GILDING SERIES

G2701



G2702



G2703



G2704



G2705



G2706



Shezhi 奢致

UHD Continuous Pattern- WHITE

HD Printing Wall Panel

SPC Background Wall





UHD CONTINUOUS PATTERN-WHITE

2001

© left and right infinite link



C

A

B

C

A

Shezhi 奢致

2051

© left and right infinite link



C

A

B

C

A

UHD CONTINUOUS PATTERN-WHITE

2027 © left and right infinite link



Shezhi 奢致

2019 © left and right infinite link





UHD CONTINUOUS PATTERN-WHITE

2056

© left and right infinite link



C

A

B

C

A

Shezhi 奢致

2057

© left and right infinite link



C

A

B

C

A



UHD CONTINUOUS PATTERN-WHITE

2004

© left and right infinite link



C

A

B

C

A

Shezhi 奢致

2003

© left and right infinite link



C

A

B

C

A

UHD CONTINUOUS PATTERN-WHITE

20063 © four-sided infinite link



C

A

B

C

A

Shezhi 奢致



UHD Continuous Pattern- GREY

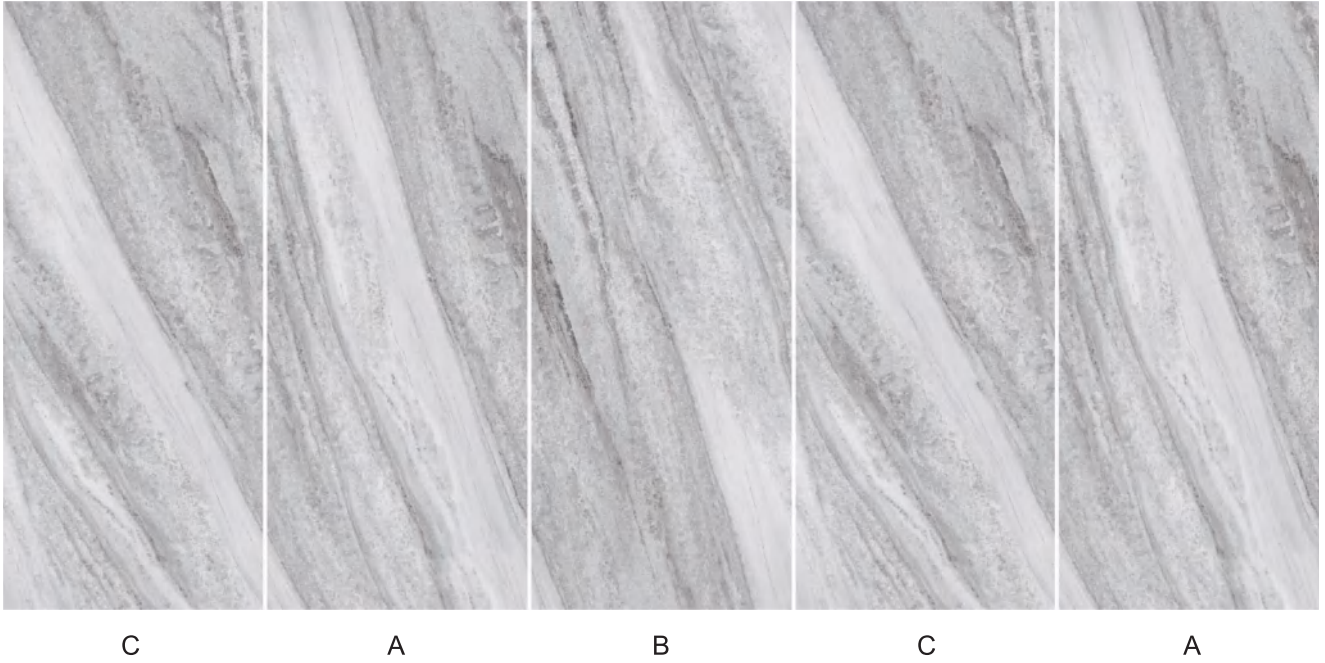
✓ HD Printing Wall Panel

✓ SPC Background Wall



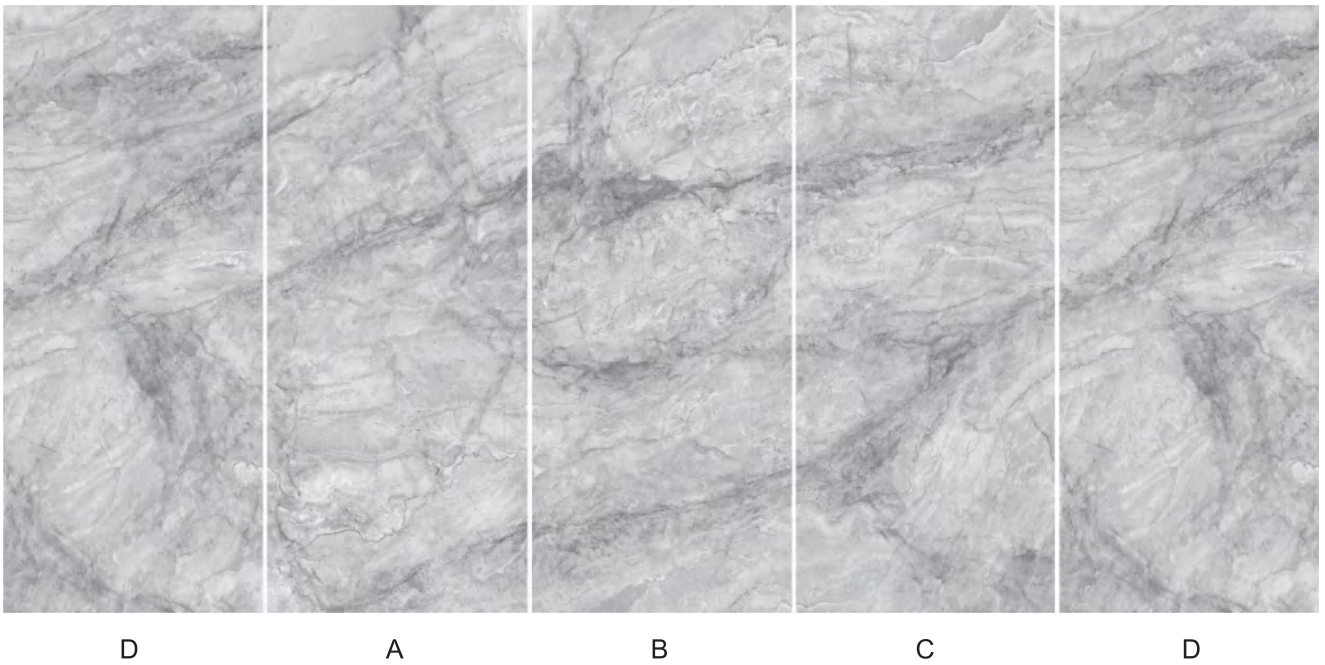
UHD CONTINUOUS PATTERN-GREY

2314 © left and right infinite link



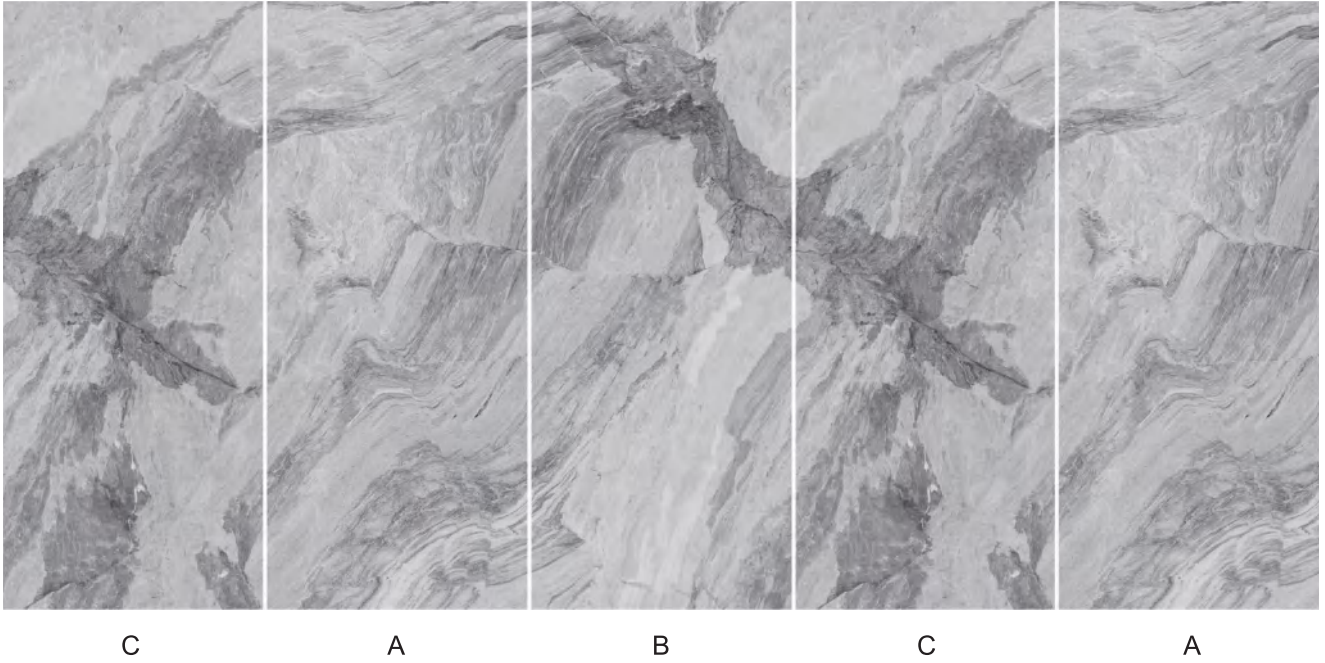
Shezhi 奢致

2315 © left and right infinite link



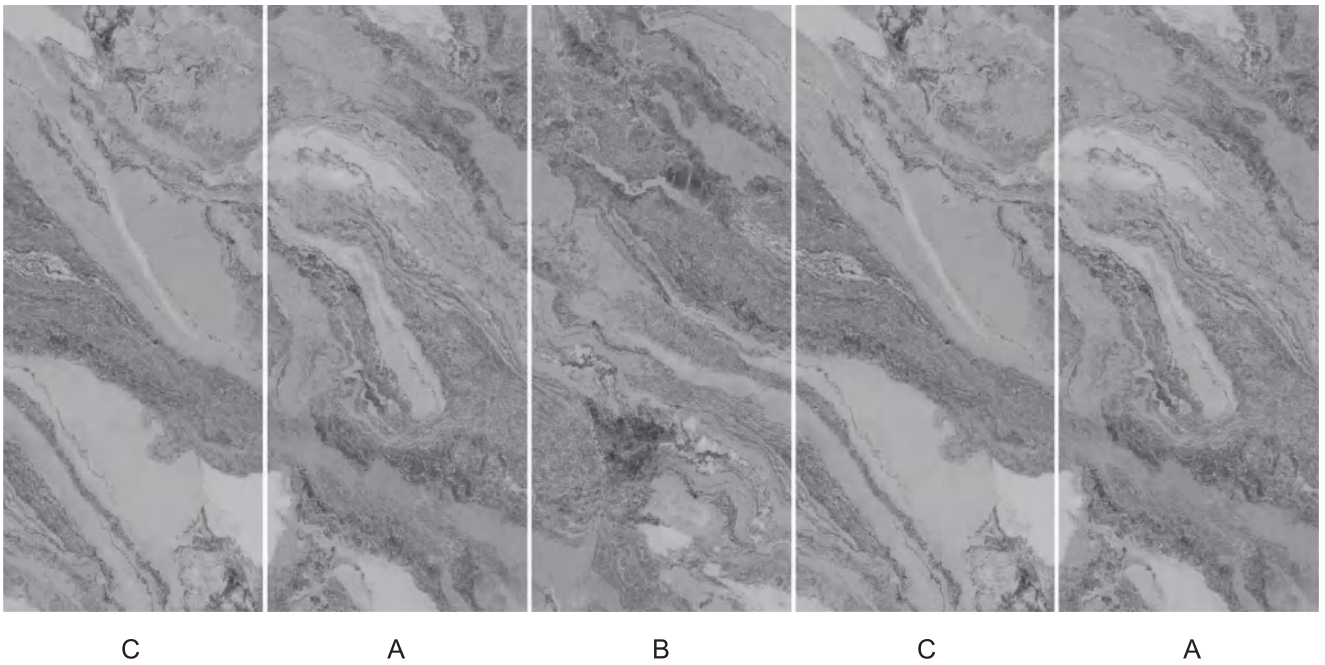
UHD CONTINUOUS PATTERN-GREY

2318 © left and right infinite link



Shezhi 奢致

2319 © left and right infinite link



UHD CONTINUOUS PATTERN-GREY

2321 © left and right infinite link



C

A

B

C

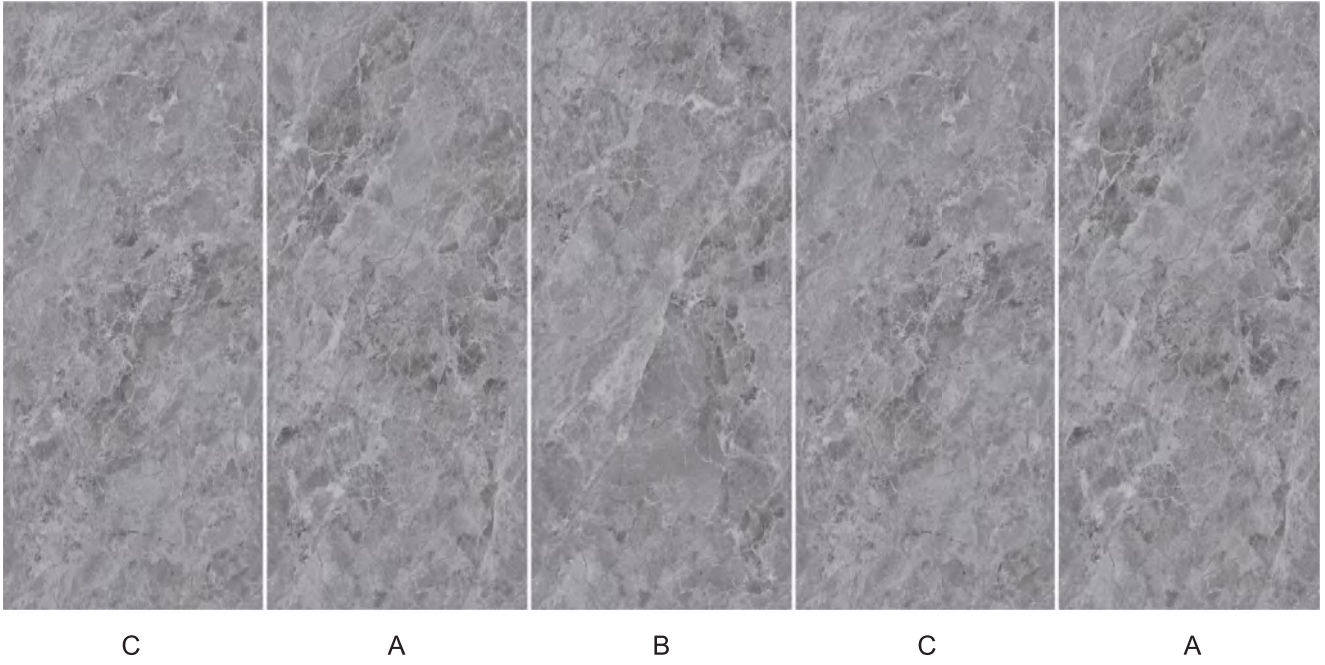
A

Shezhi 奢致



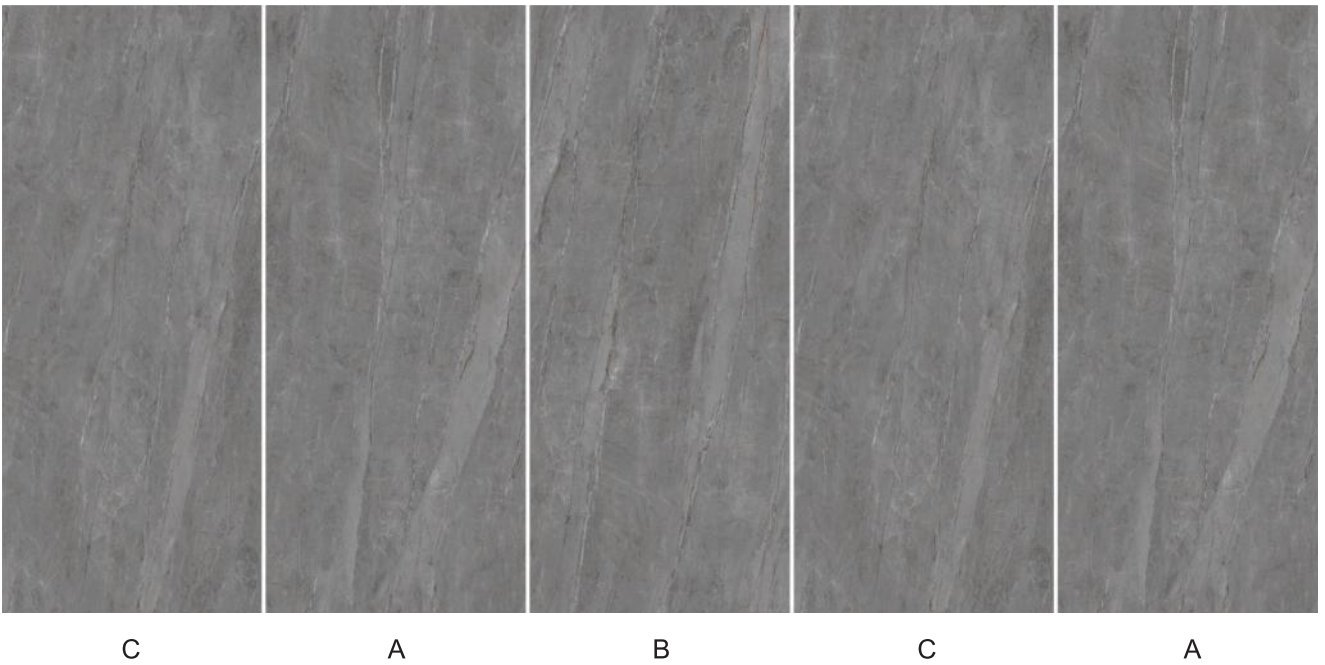
UHD CONTINUOUS PATTERN-GREY

23023 © four-sided infinite link



Shezhi 奢致

23024 © four-sided infinite link



UHD CONTINUOUS PATTERN-GREY

23025 © four-sided infinite link



C

A

B

C

A

Shezhi 奢致

23026 © four-sided infinite link



C

A

B

C

A

UHD Continuous Pattern- BLACK

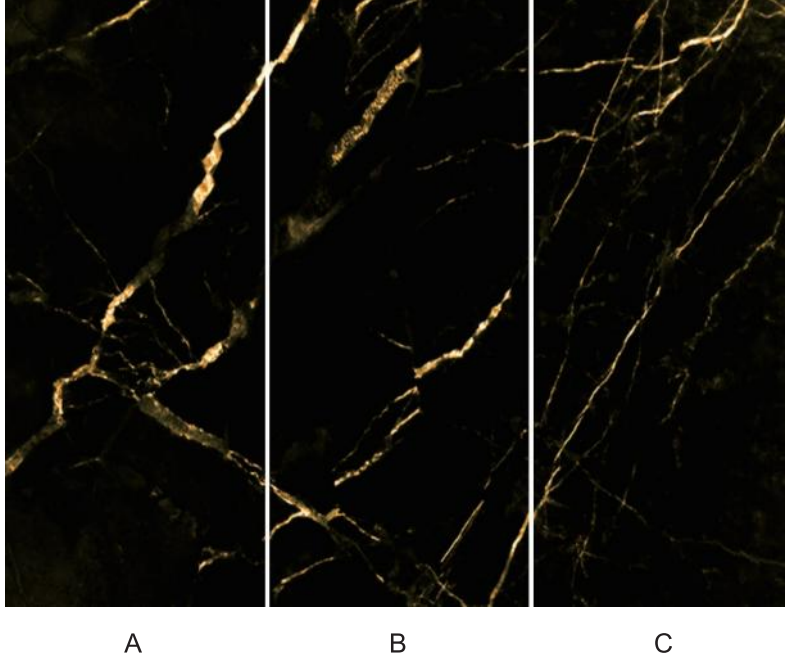
✓ HD Printing Wall Panel

✓ SPC Background Wall



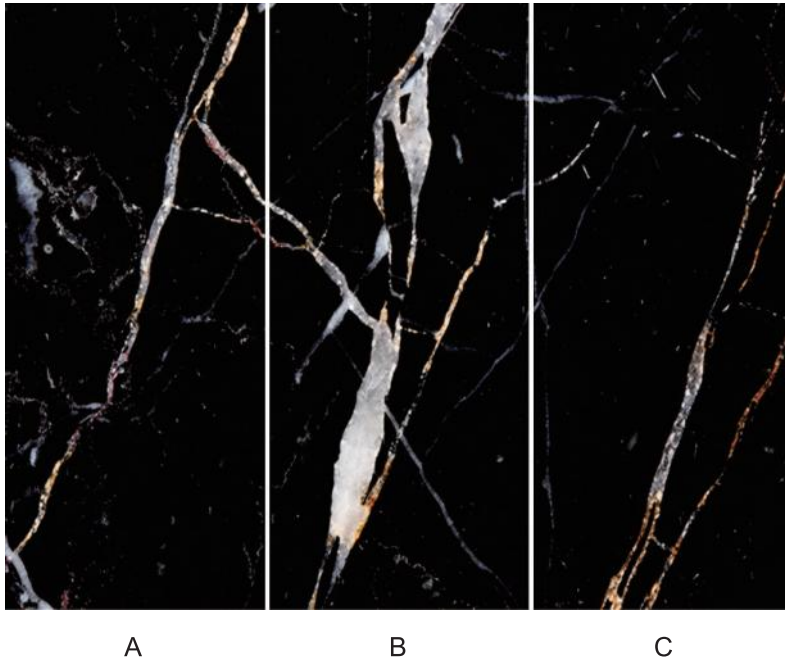
UHD CONTINUOUS PATTERN-BLACK

2401 [© right link](#)



Shezhi 奢致

2418 [© right link](#)





UHD CONTINUOUS PATTERN-BLACK

2419

◎ left and right infinite link



C

A

B

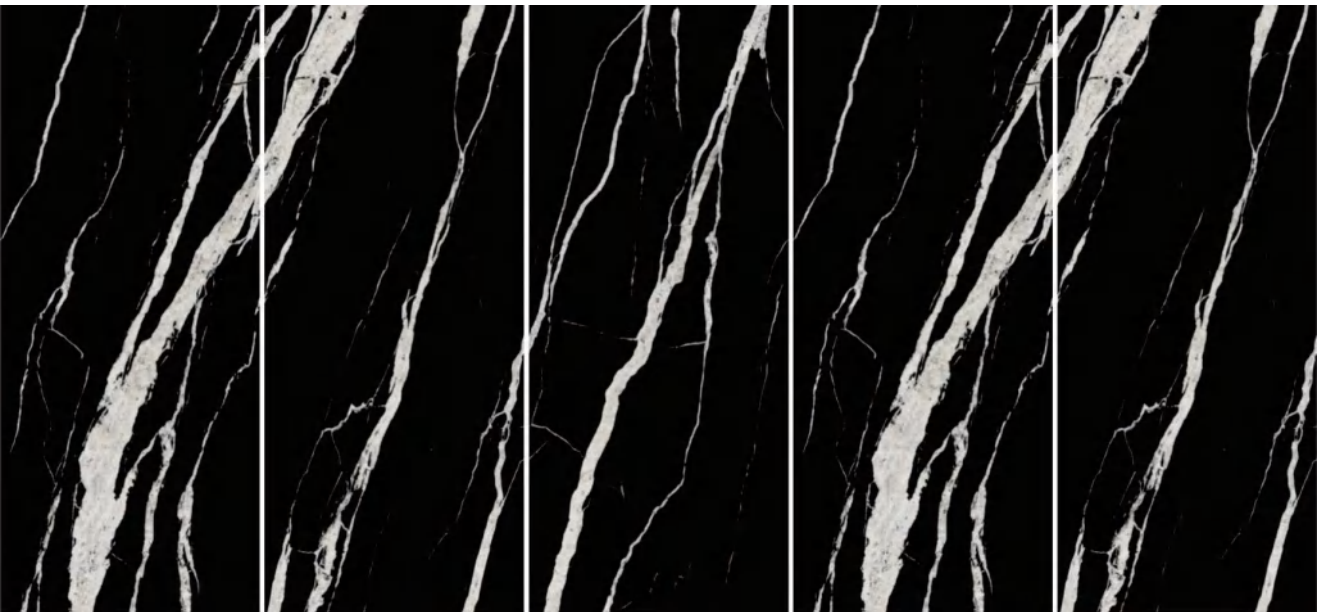
C

A

Shezhi 奢致

2411

◎ left and right infinite link



C

A

B

C

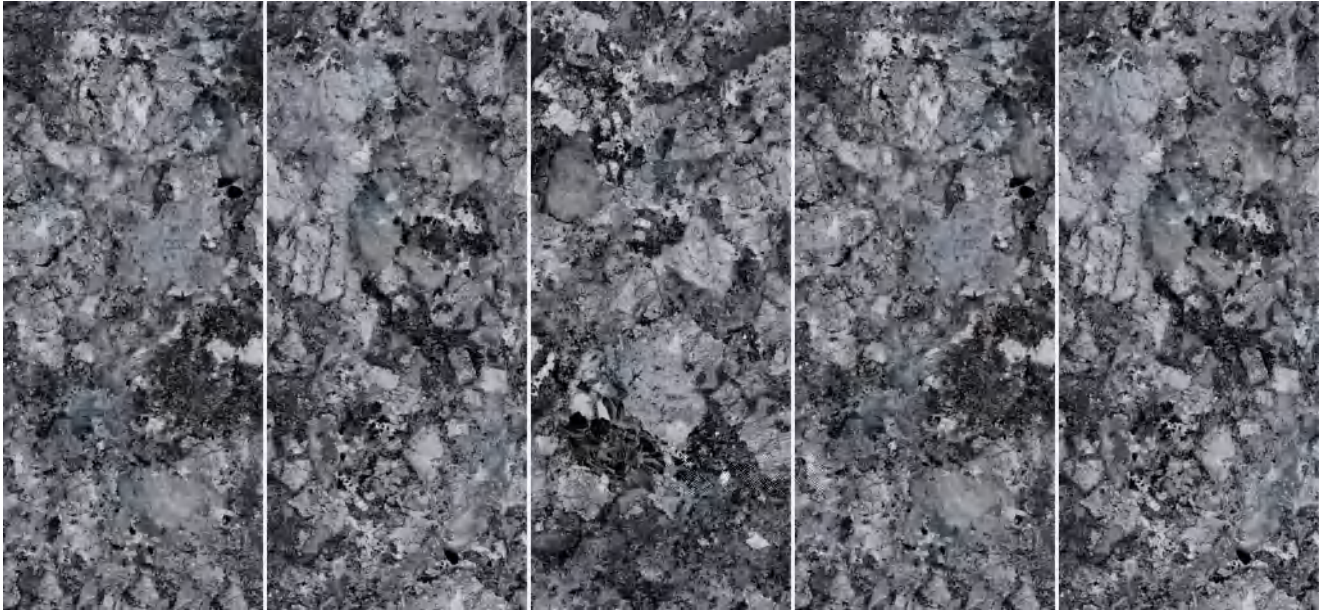
A



UHD CONTINUOUS PATTERN-BLACK

24020

© four-sided infinite link



C

A

B

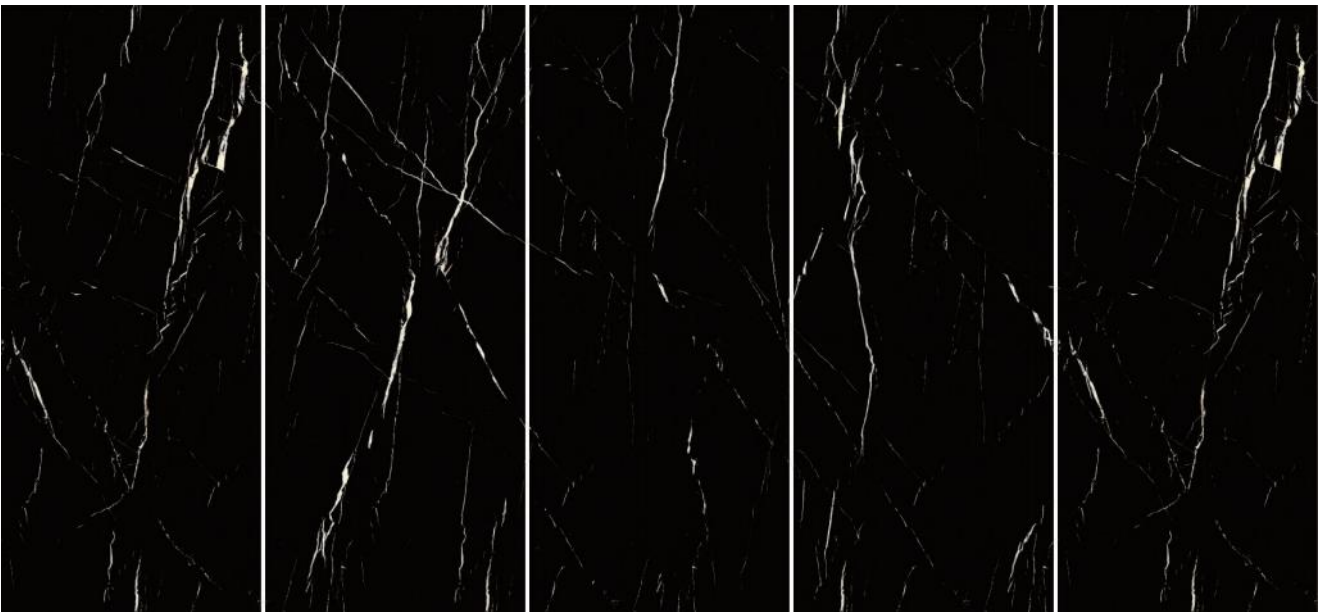
C

A

Shezhi 奢致

24021

© four-sided infinite link



D

A

B

C

D



UHD CONTINUOUS PATTERN-BLACK

24022

© four-sided infinite link

C

A

B

C

A



C

A

B

C

A



UHD CONTINUOUS PATTERN-BLACK

24023

© four-sided infinite link

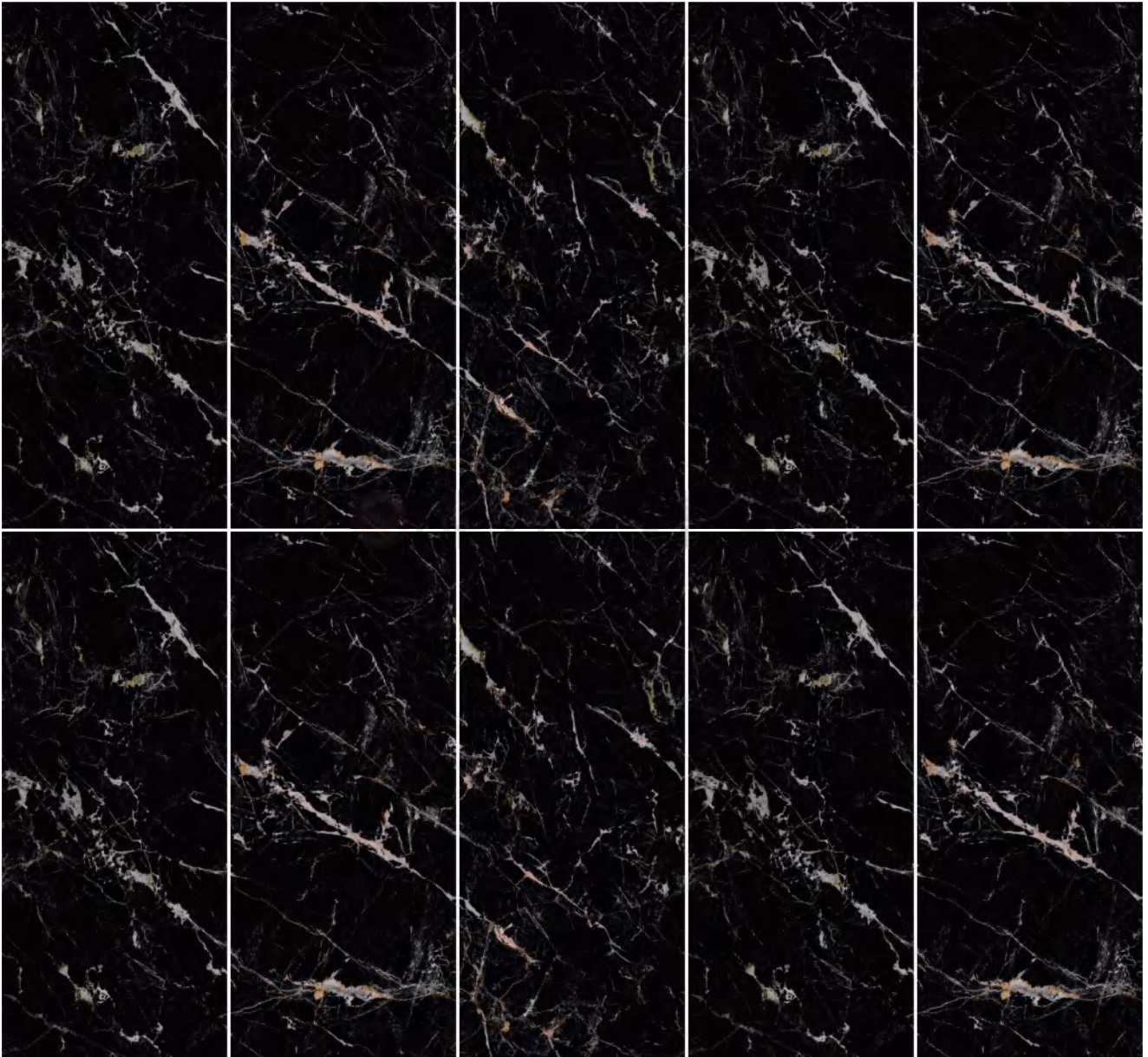
C

A

B

C

A



C

A

B

C

A

UHD Continuous Pattern- WARM LUXURY STONE

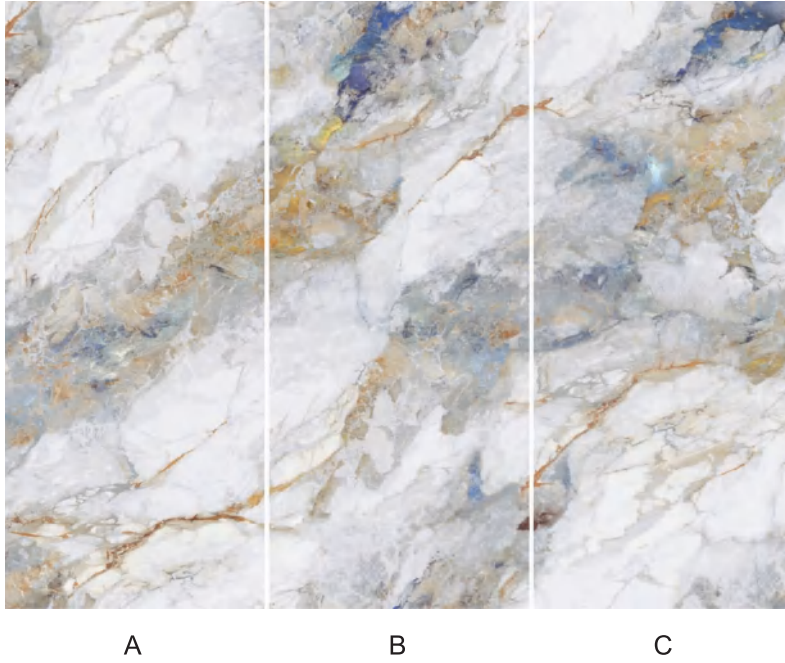
HD Printing Wall Panel

SPC Background Wall



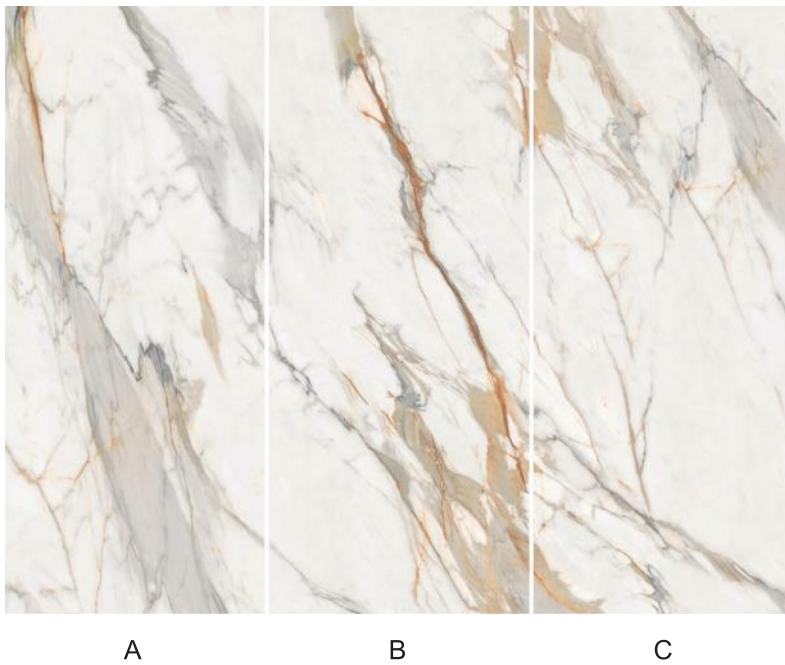
UHD CONTINUOUS PATTERN-WARM LUXURY STONE

2128 [© right link](#)



Shezhi 奢致

2129 [© right link](#)





UHD CONTINUOUS PATTERN-WARM LUXURY STONE

2101

© left and right infinite link



C

A

B

C

A

Shezhi 奢致

2103

© left and right infinite link



C

A

B

C

A



UHD CONTINUOUS PATTERN-WARM LUXURY STONE

2135

© left and right infinite link



C

A

B

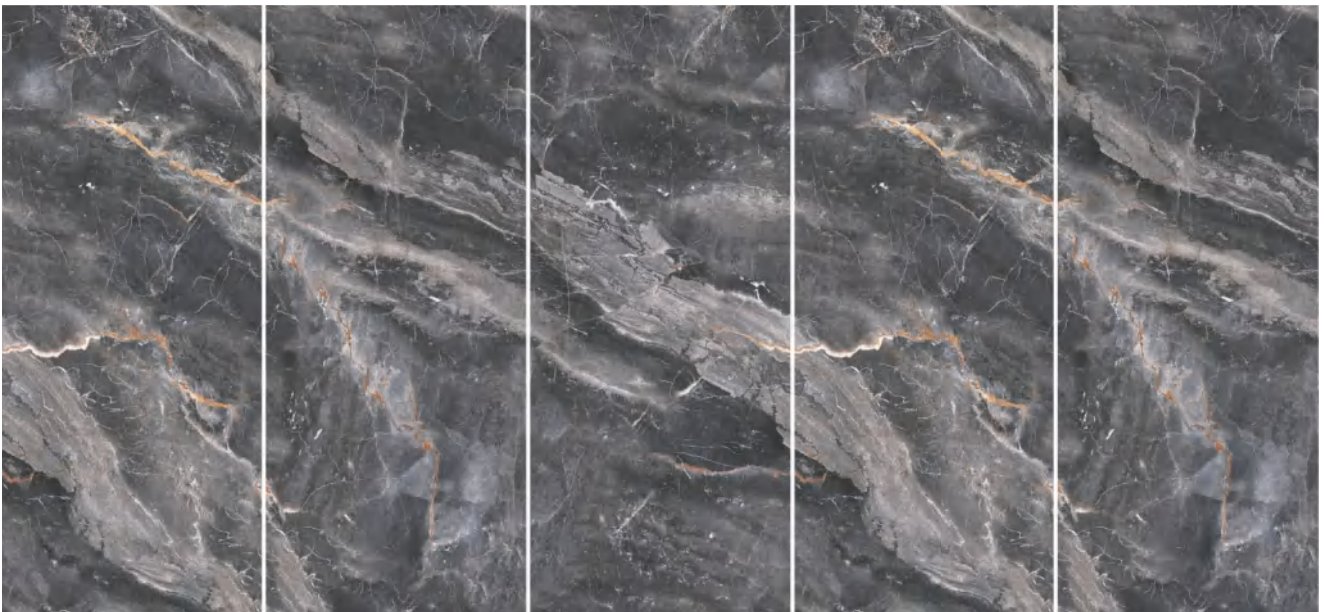
C

A

Shezhi 奢致

2136

© left and right infinite link



C

A

B

C

A



UHD CONTINUOUS PATTERN-WARM LUXURY STONE

21041

© four-sided infinite link



C

A

B

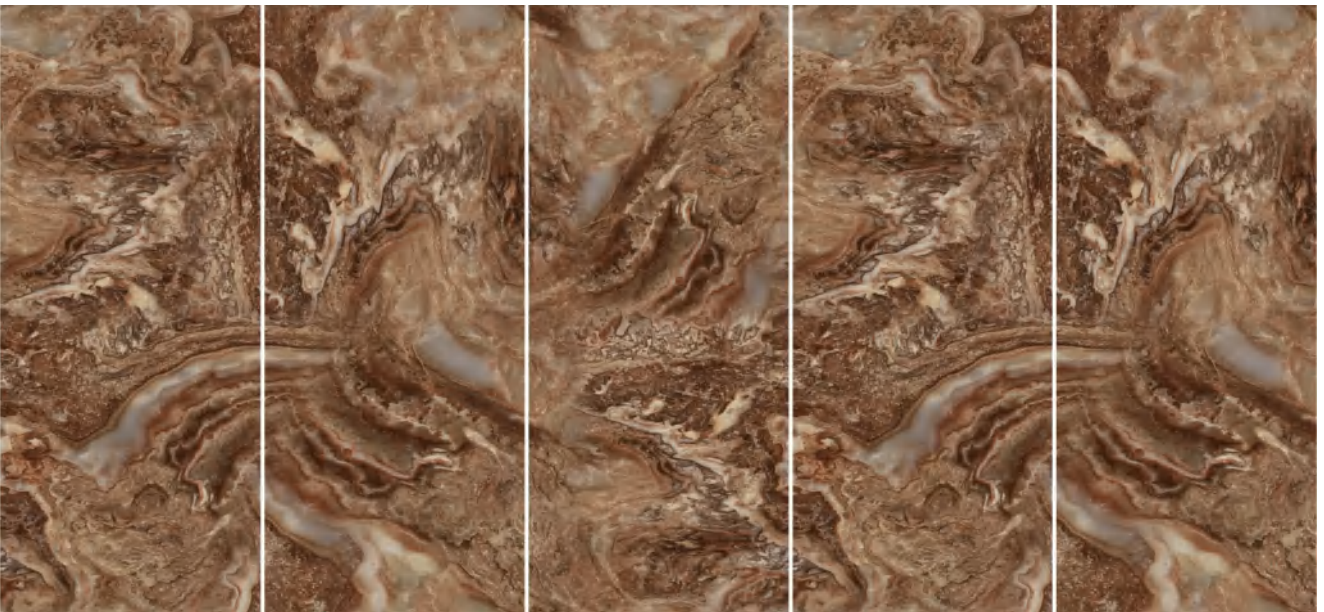
C

A

Shezhi 奢致

21026

© four-sided infinite link



C

A

B

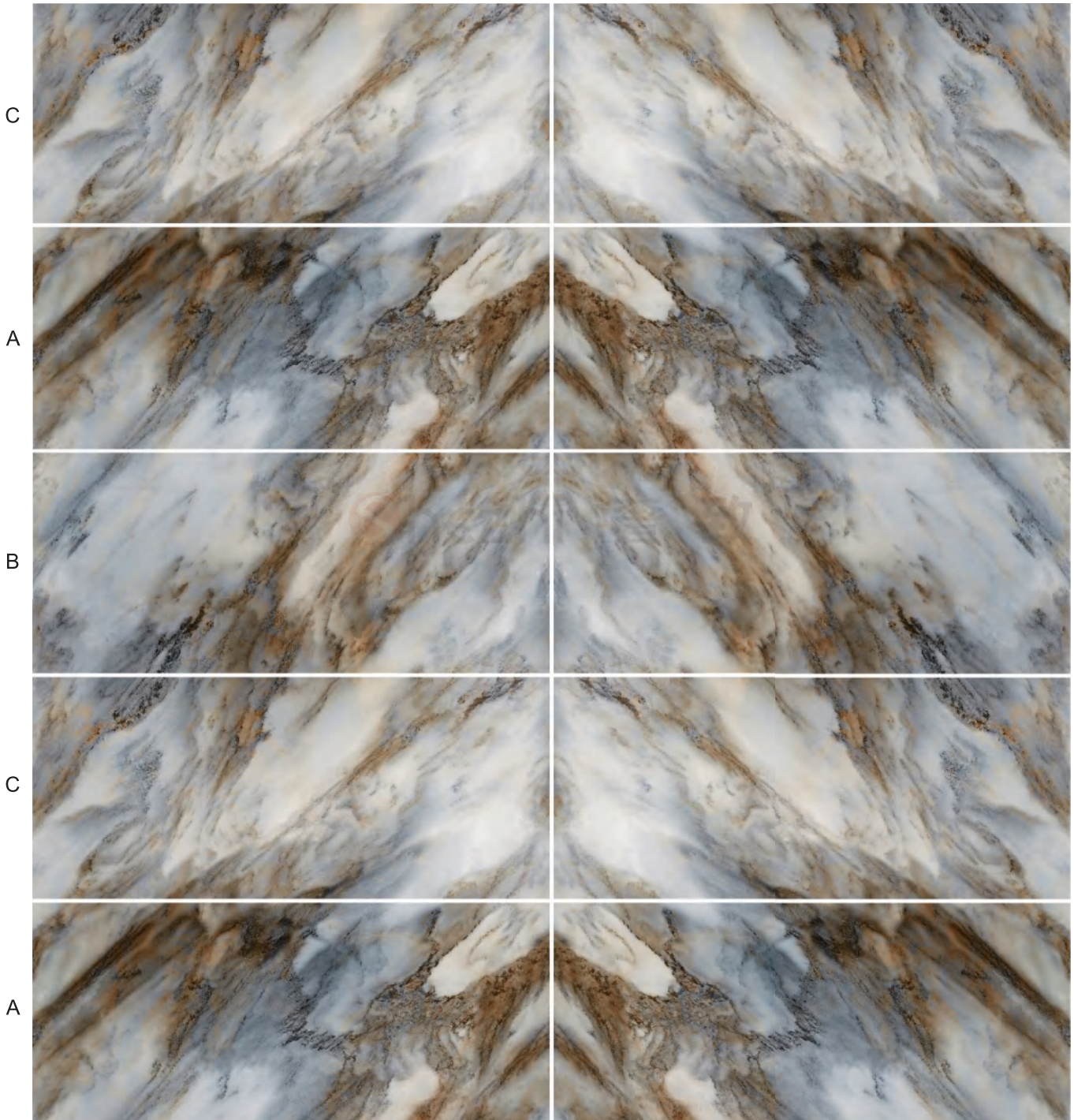
C

A



UHD CONTINUOUS PATTERN-WARM LUXURY STONE

21040-Symmetry © four-sided infinite link



UHD Continuous Pattern- BLUE GREEN LUXURY STONE

HD Printing Wall Panel

SPC Background Wall

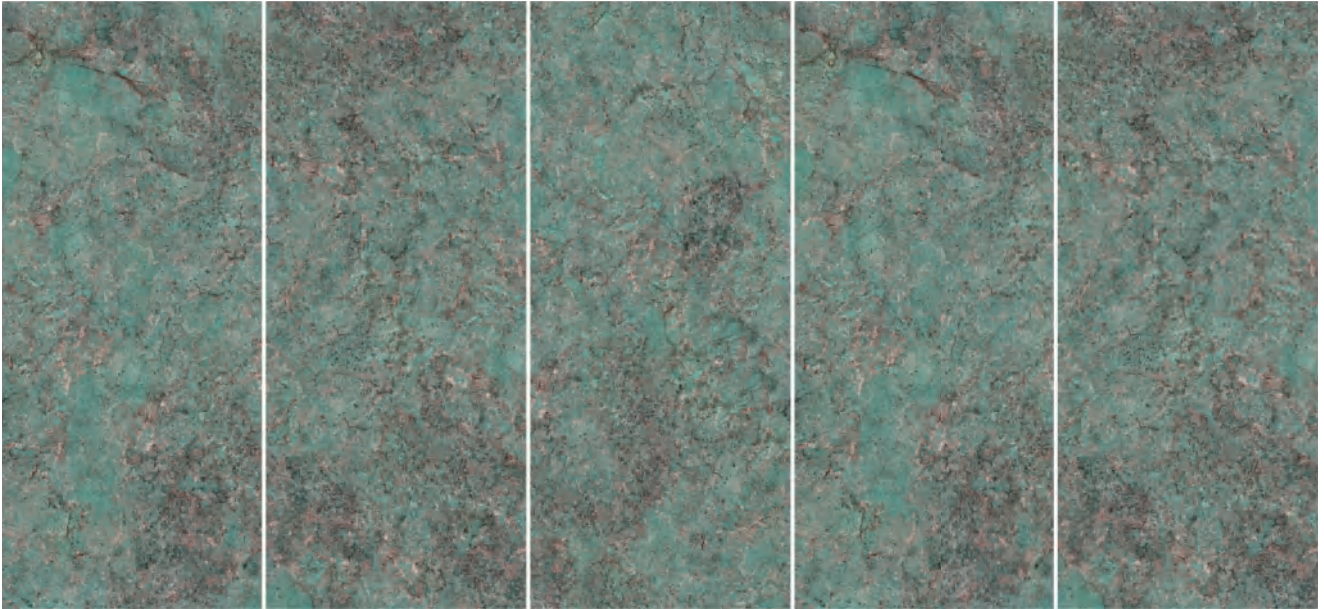




UHD CONTINUOUS PATTERN-BLUE GREEN LUXURY STONE

2228

© left and right infinite link



C

A

B

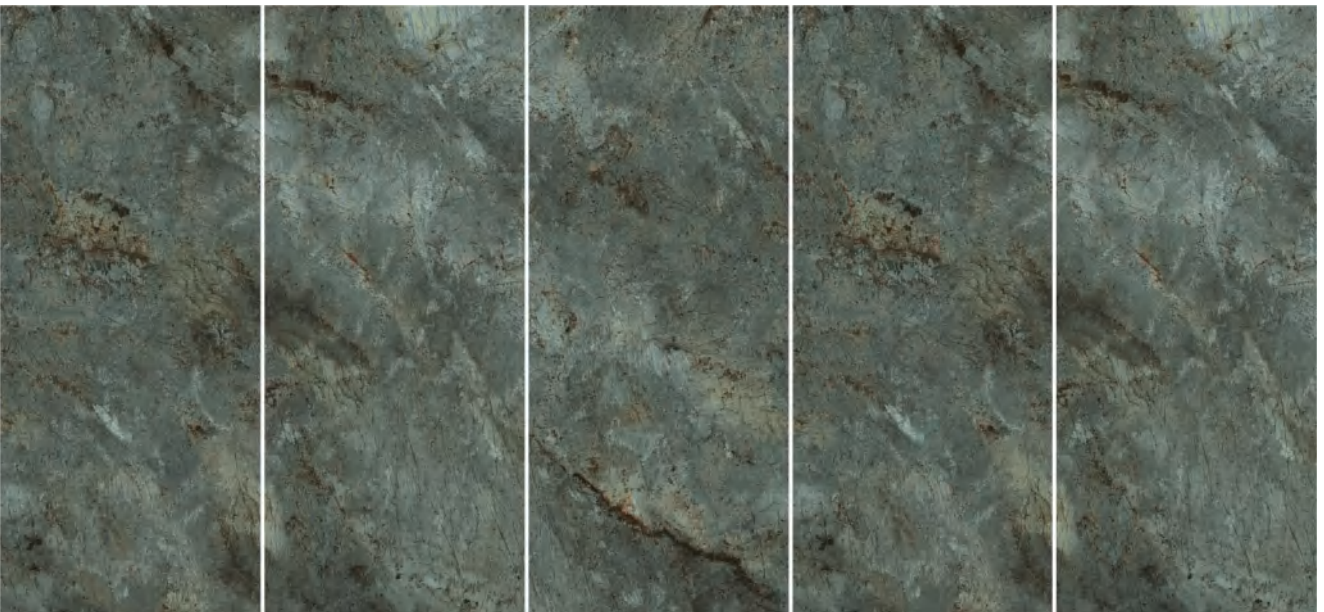
C

A

Shezhi 奢致

2229

© left and right infinite link



C

A

B

C

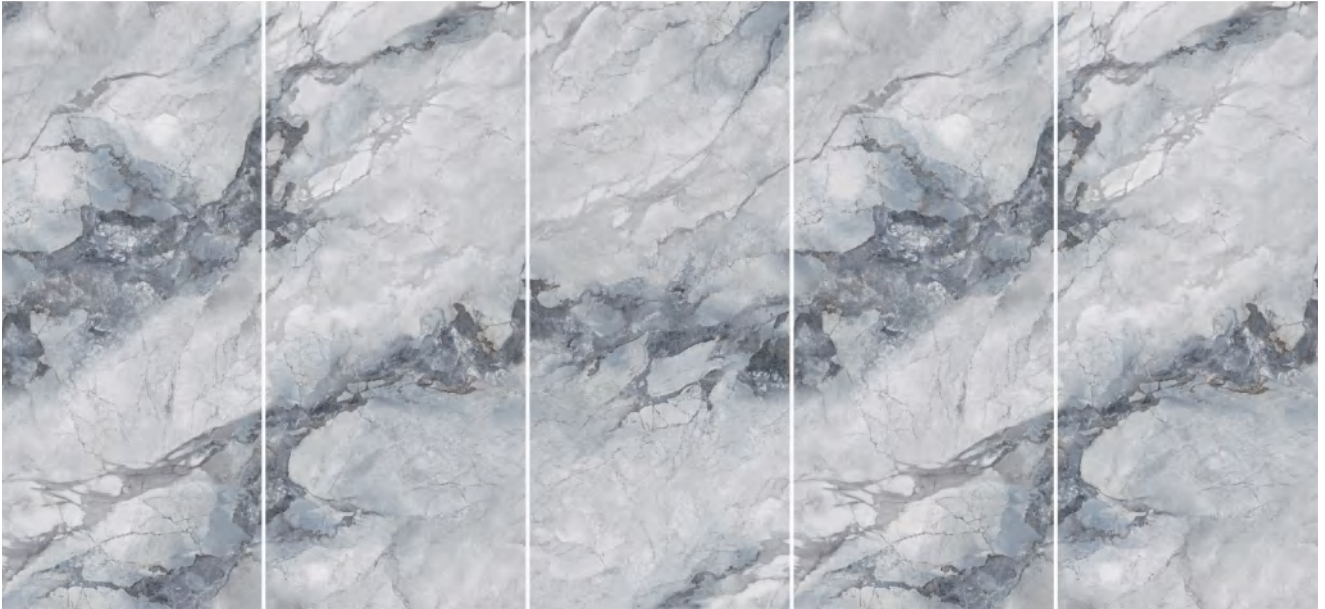
A



UHD CONTINUOUS PATTERN-BLUE GREEN LUXURY STONE

2232

© left and right infinite link



C

A

B

C

A

Shezhi 奢致

2233

© left and right infinite link



D

A

B

C

D



UHD CONTINUOUS PATTERN-BLUE GREEN LUXURY STONE

22036

© four-sided infinite link



C

A

B

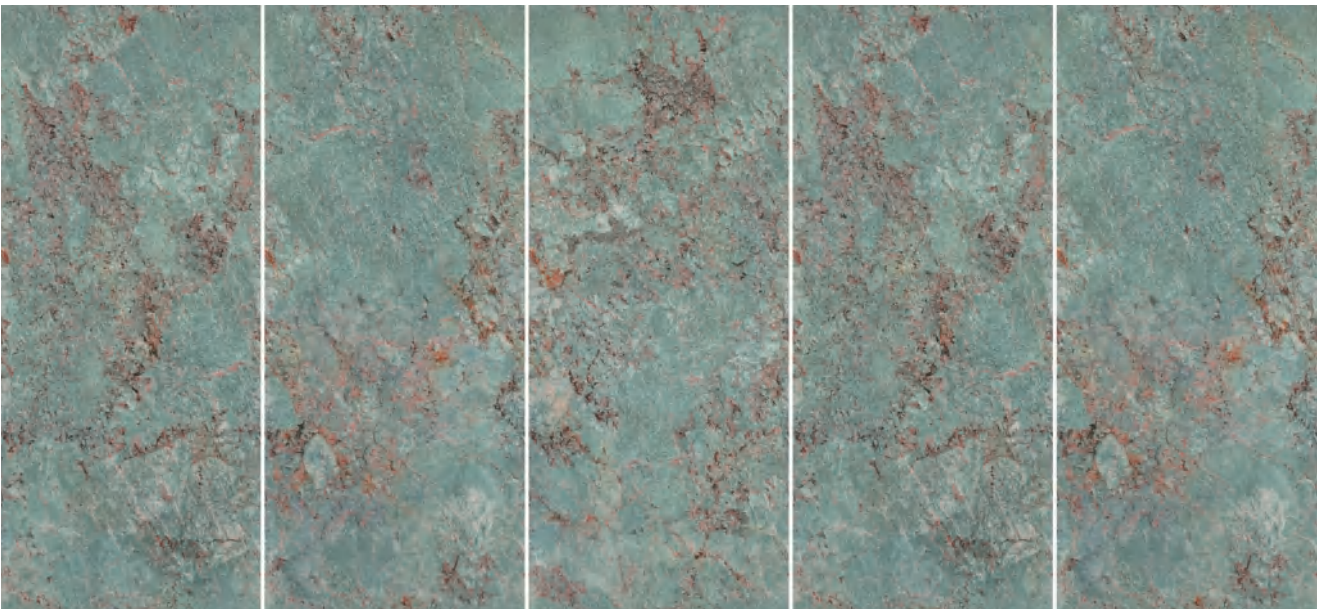
C

A

Shezhi 奢致

22037

© four-sided infinite link



C

A

B

C

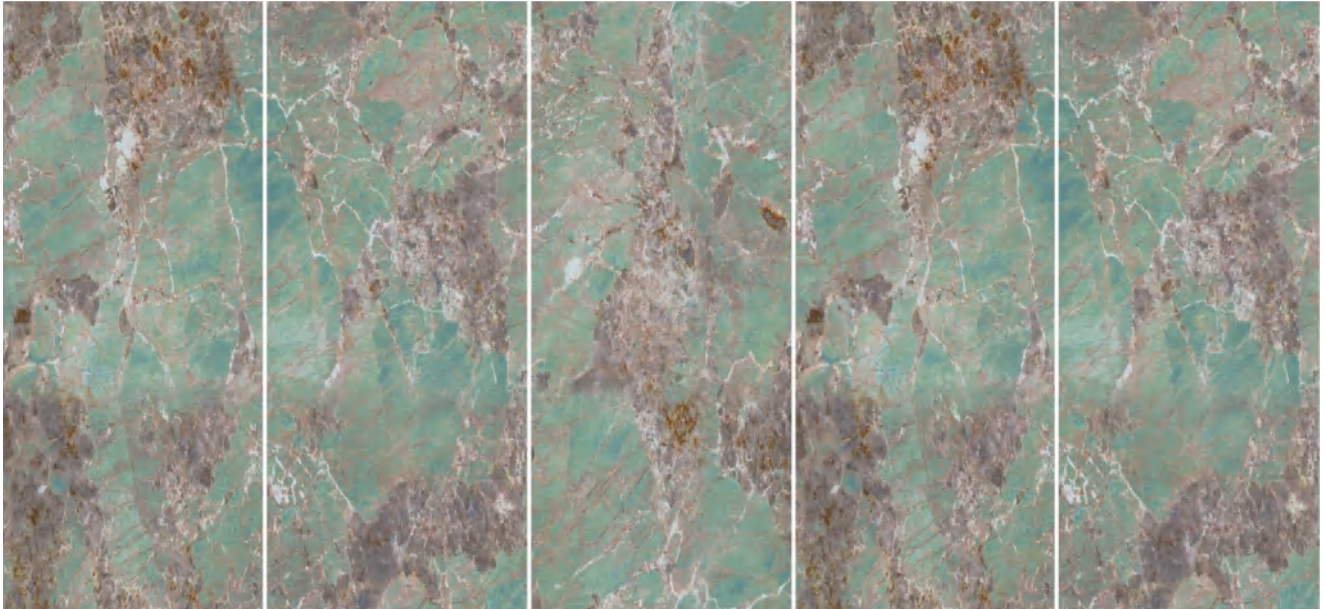
A



UHD CONTINUOUS PATTERN-BLUE GREEN LUXURY STONE

22020

© four-sided infinite link



C

A

B

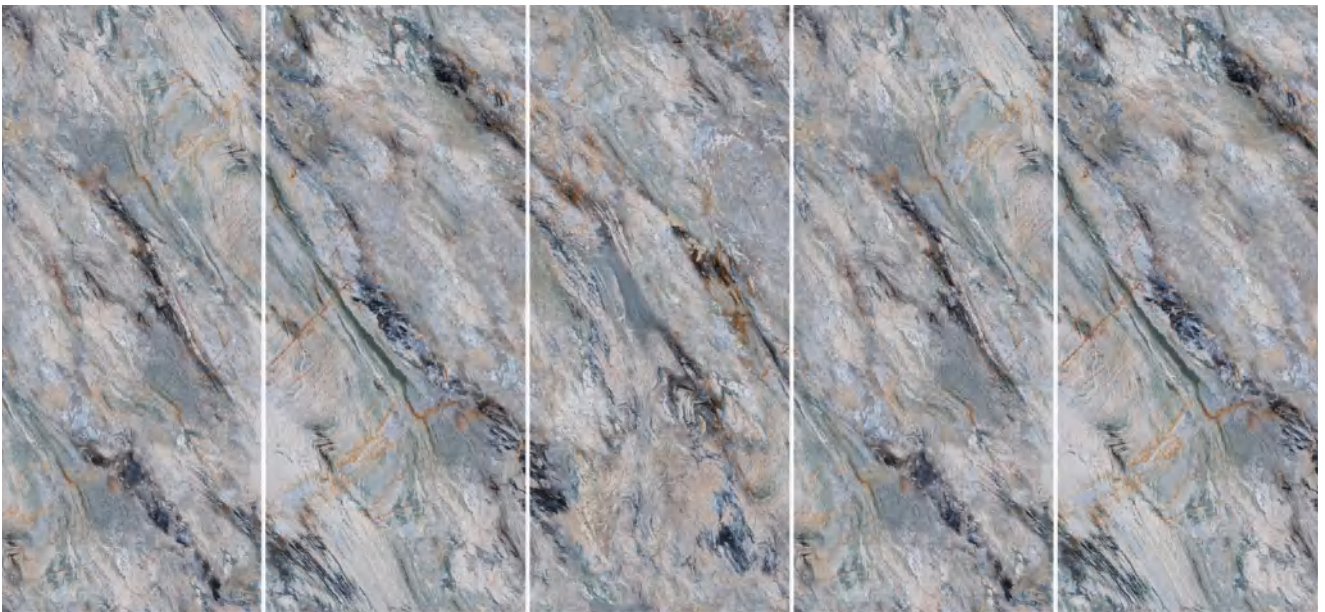
C

A

Shezhi 奢致

22041

© four-sided infinite link



C

A

B

C

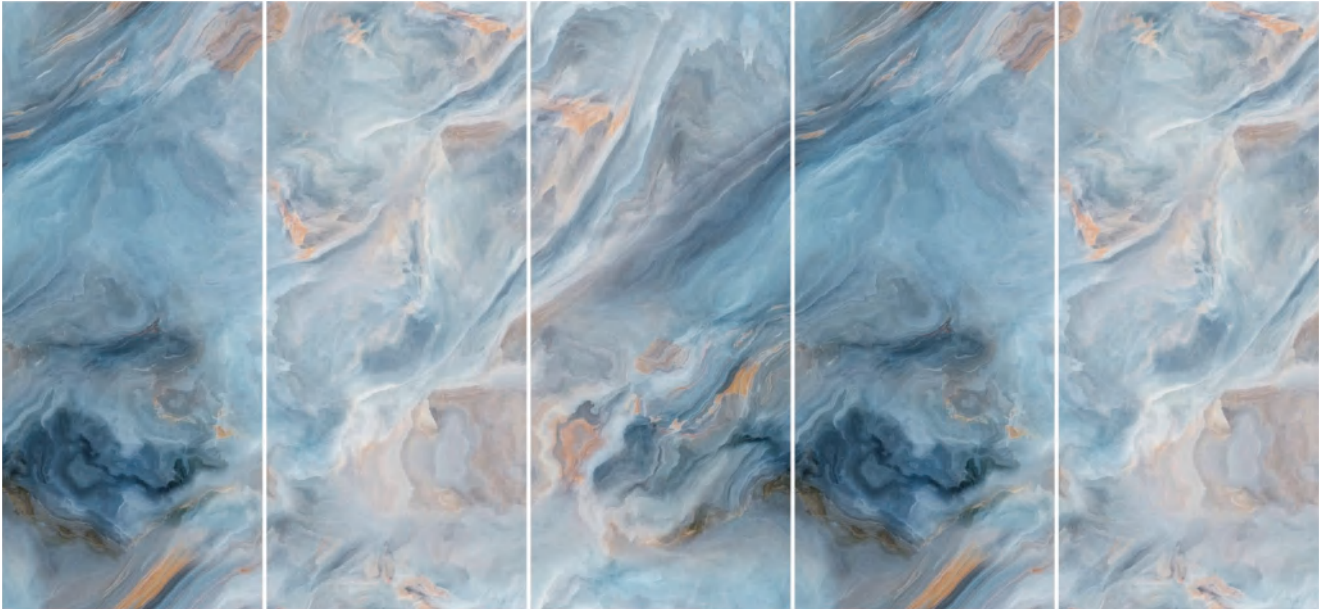
A



UHD CONTINUOUS PATTERN-BLUE GREEN LUXURY STONE

22042

© four-sided infinite link



C

A

B

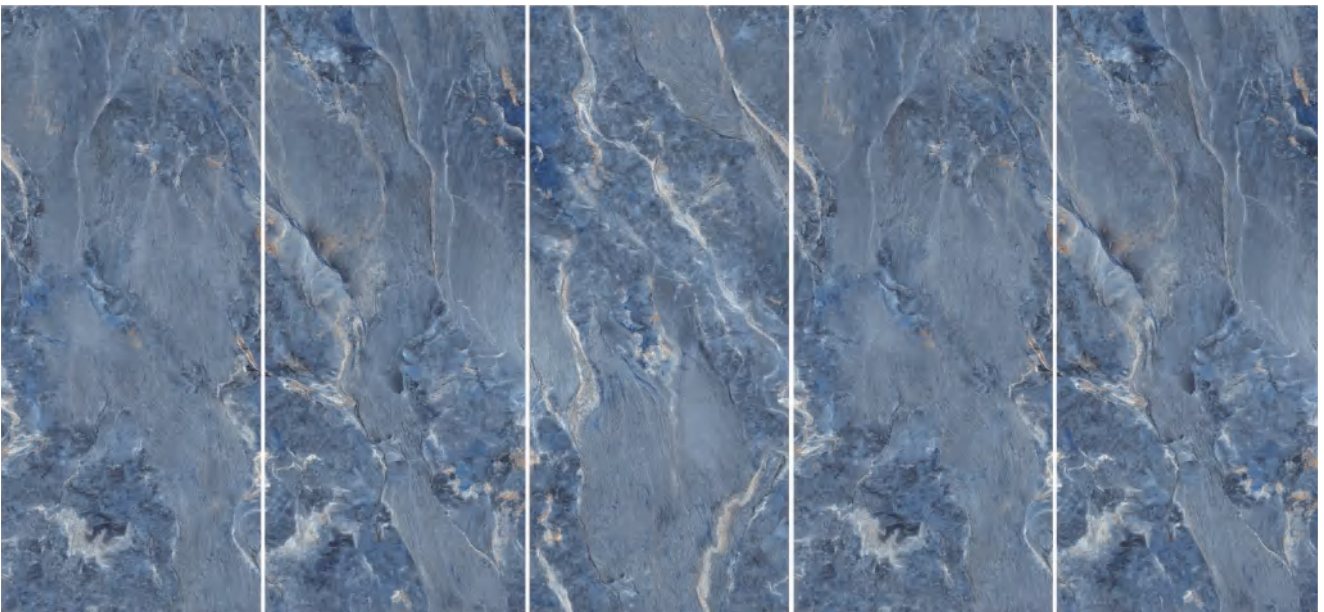
C

A

Shezhi 奢致

22043

© four-sided infinite link



C

A

B

C

A

UHD Continuous Pattern- WOOD GRAIN

HD Printing Wall Panel

SPC Background Wall



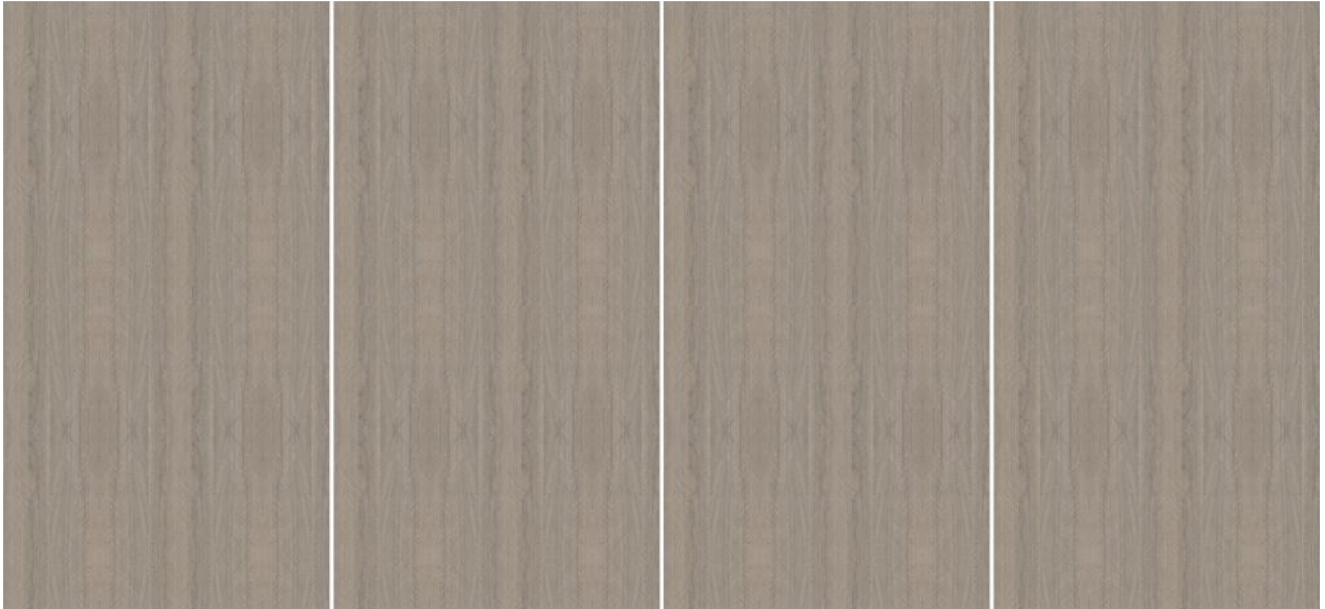
W2606



UHD CONTINUOUS PATTERN-WOOD GRAIN

W2601

© four-sided infinite link



A

B

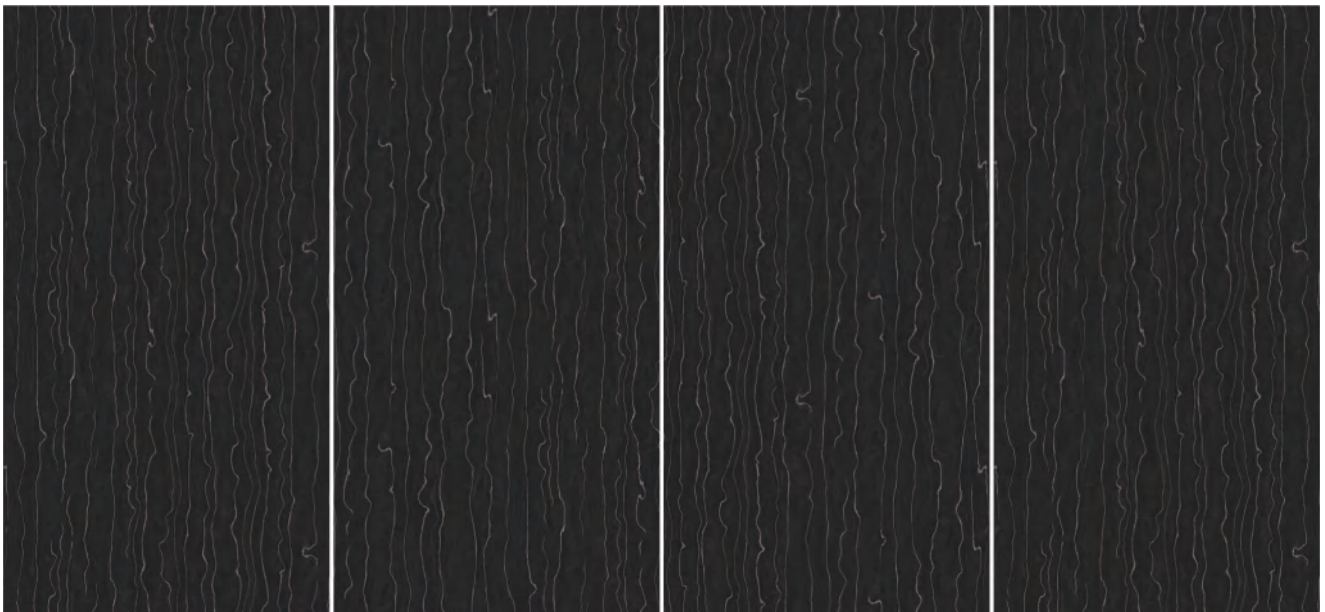
C

A

Shezhi 奢致

W2602

© four-sided infinite link



A

B

C

A



UHD CONTINUOUS PATTERN-WOOD GRAIN

W2603

© four-sided infinite link



A

B

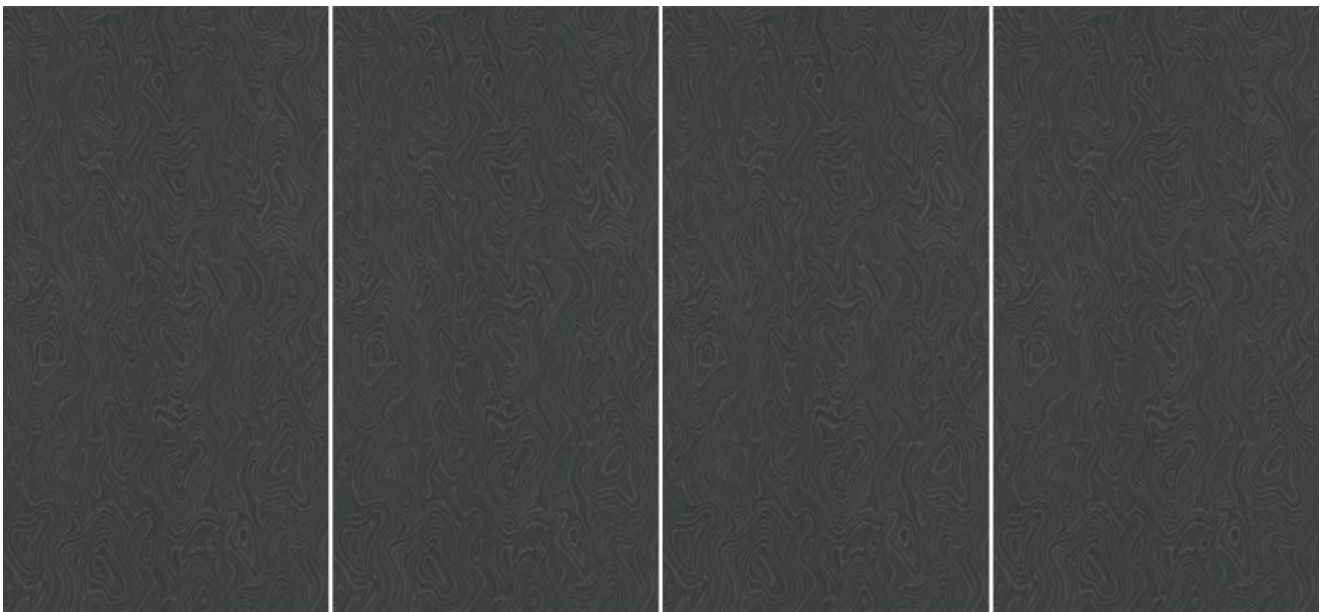
C

A

Shezhi 奢致

W2604

© four-sided infinite link



A

B

C

A



UHD CONTINUOUS PATTERN-WOOD GRAIN

W2605

© four-sided infinite link



A

B

C

A

Shezhi 奢致

W2606

© four-sided infinite link



A

B

C

A

For more background wall pattern, please check «UHD Continuous pattern» .

SPC Waterproof Wall Panel



Waterproof



Pro-Environment



Flame-Retardant



Easy to maintain

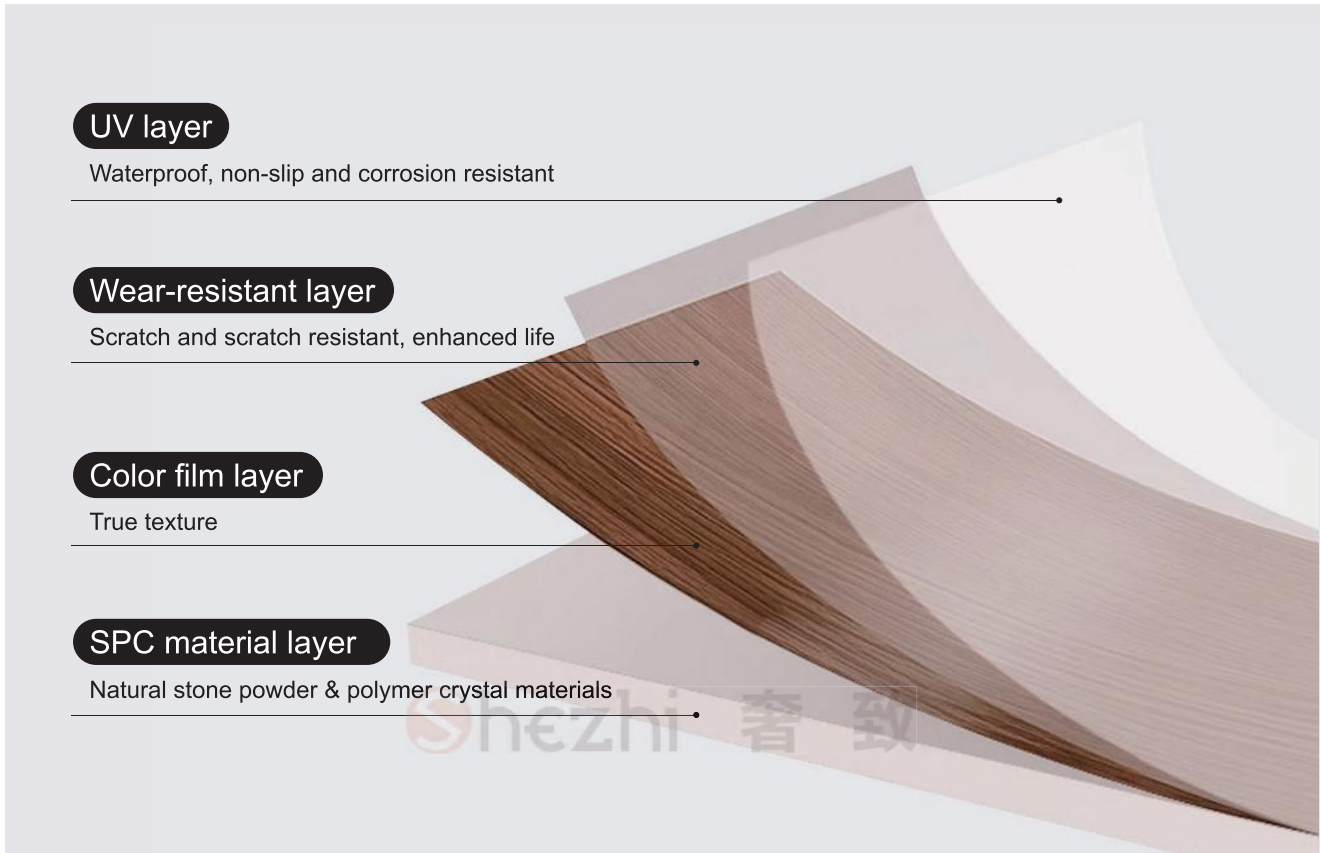


Super Rigidity



SPC WATERPROOF WALL PANEL

Product structure diagram



Product advantage

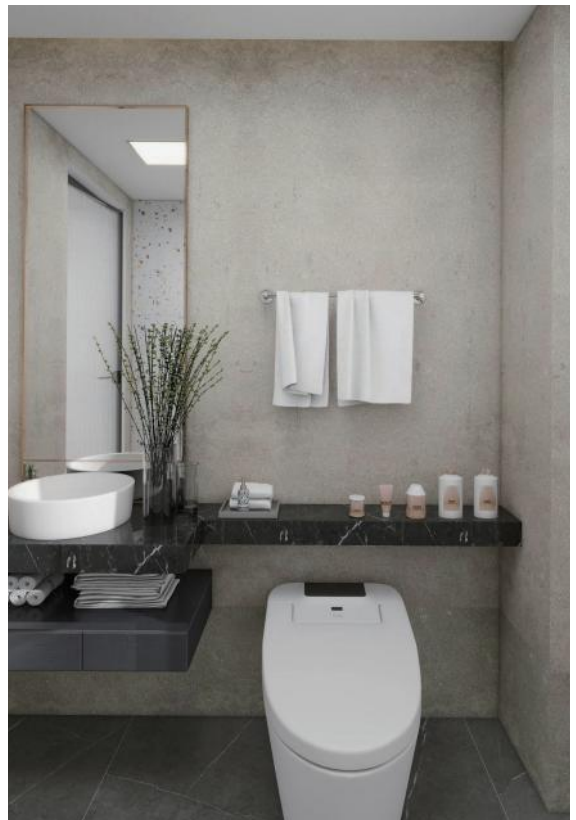
Exclusive color customization for hotel brands. Install immediately and move in. No ventilation is required. No cement and sand are needed. Realize rapid wall renovation of old houses. For hotel, toilet, catering, fast food kitchen, office, store, museum, library, medical health care, indoor lightweight new parts.

Product specification

Name	SPC waterproof wall panel
Size	2440/2600/2800mm*600mm
Thickness	4mm
Splicing mode	Locking splicing
Performance	Waterproof

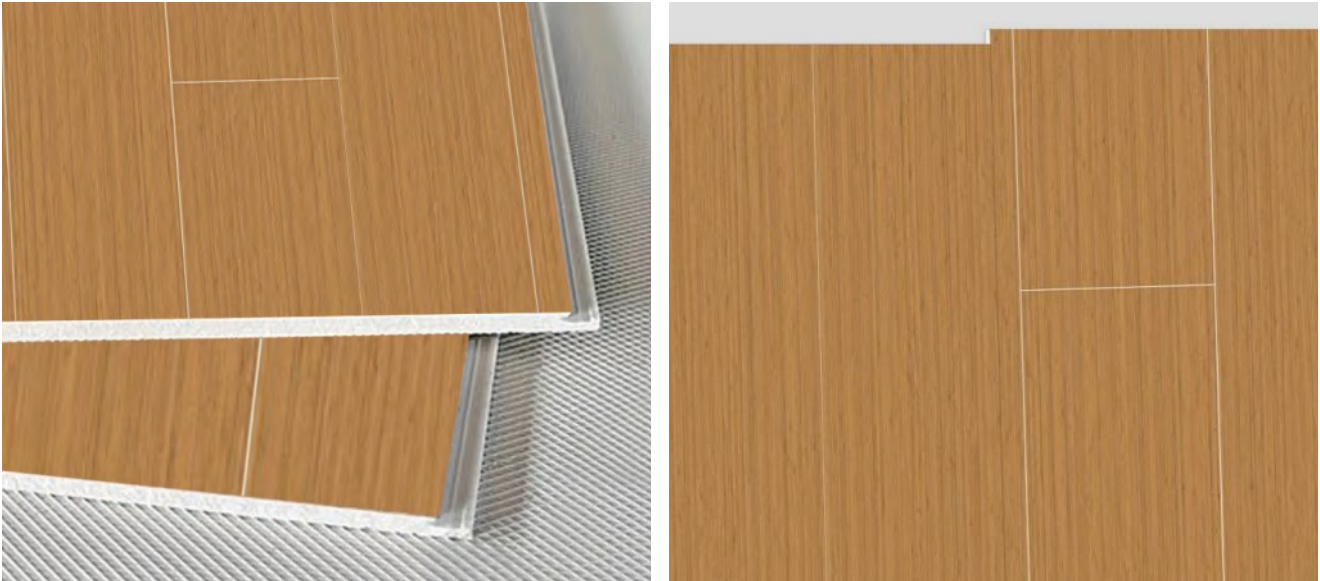
SPC WATERPROOF WALL PANEL

Decoration cases



SPC WATERPROOF WALL PANEL

Product photo



Locking design, tightly spliced, with good continuity, waterproof and impermeable. It is a better substitute for ceramic tiles.

Optional patterns

Shezhi 奢致



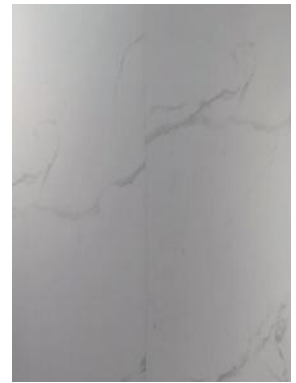
Same style as the Quanji Hotel



Same style as the Juzi Hotel



Same style as the Gaodeng Hotel



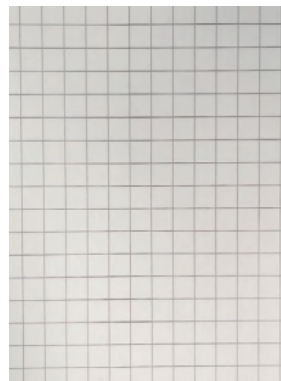
Same style as the Nihao Hotel



Same style as the Manxin Hotel



White square

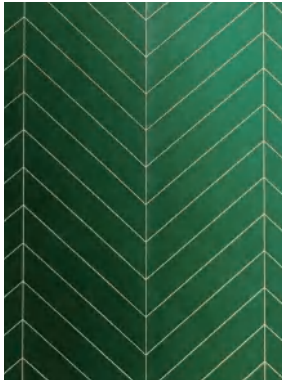


White check

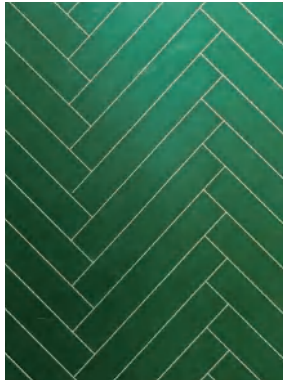


White rectangle

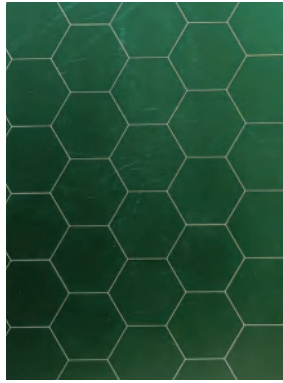
SPC WATERPROOF WALL PANEL



Green fish bone pattern



Green herringbone pattern



Green hexagon



Green Mosaic



Green minnow bone(Frosted)



Green brick pattern



Green animal pattern



Light blue rectangle



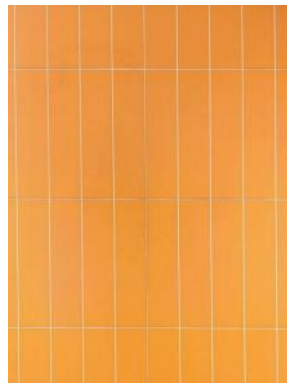
Same style as the Qitian Hotel



Large yellow grid



Blue cube



Hermes orange



Black and red long plaid



Starry sky grey cement pattern



Light grey stone



T001

SPC WATERPROOF WALL PANEL



T002



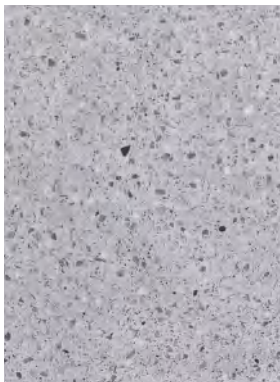
T003



T006



T012



T014



T016



T018



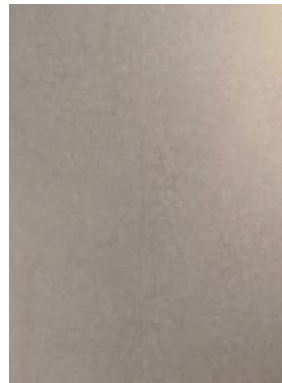
T019



T020



Grey weave



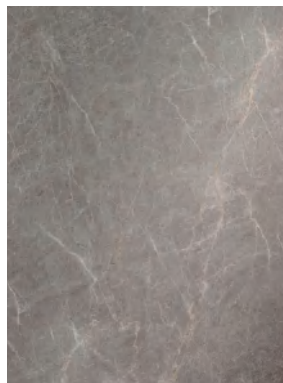
Clouds grey cement pattern



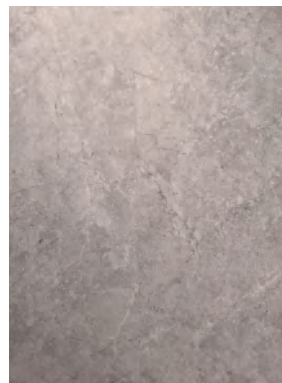
Personalized carpet pattern



Small ink stone pattern



Gray slate grain



Grey cement stripe



White marble

SPC Stone Crystal Flooring



Waterproof



Pro-Environment



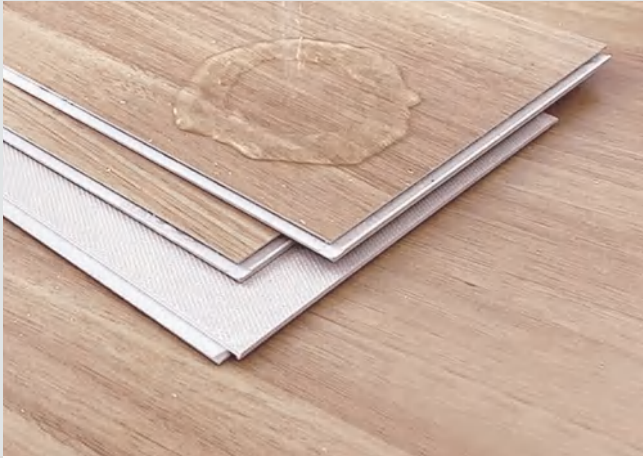
Flame-Retardant



Easy to maintain



Super Rigidity



waterproof and moisture-proof

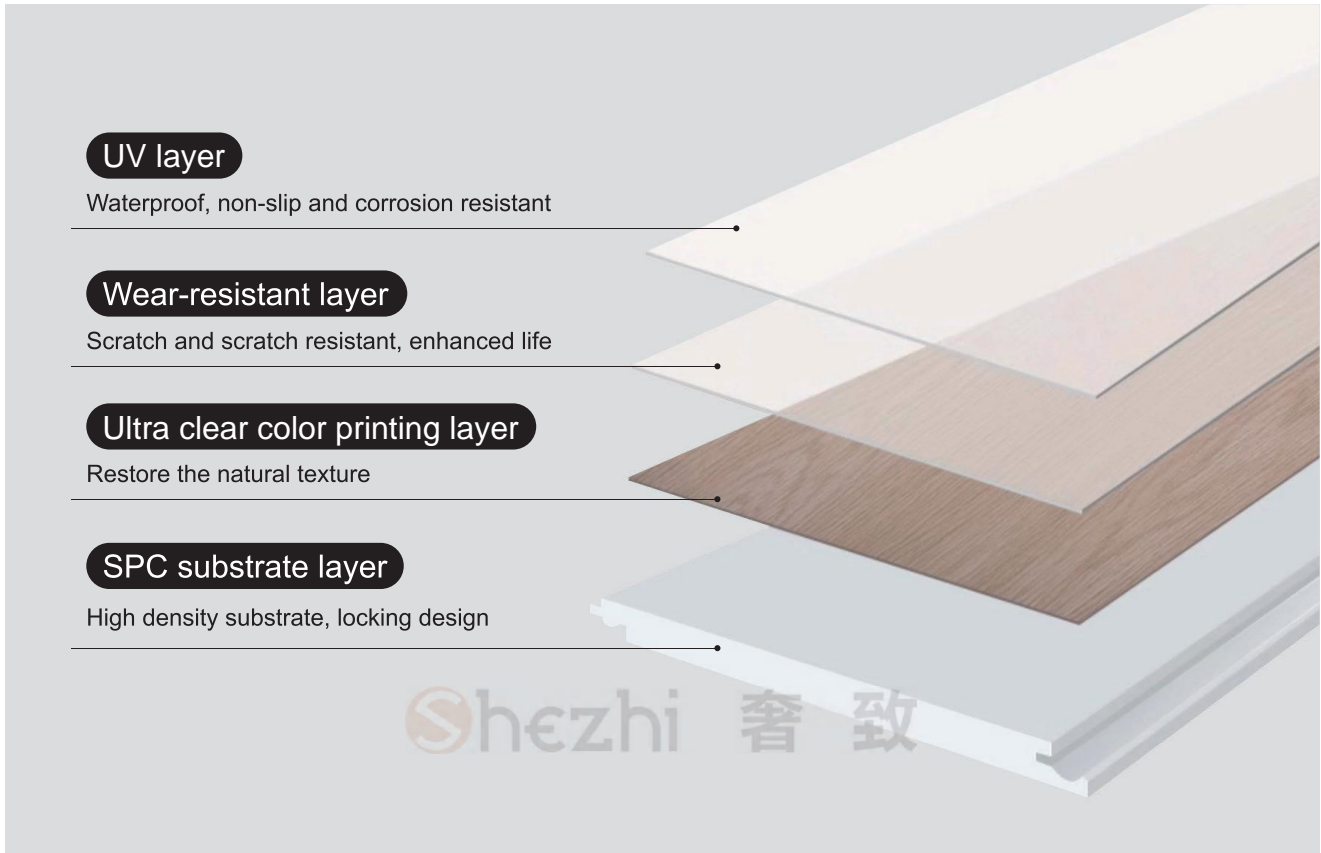


locking splicing



SPC STONE CRYSTAL FLOORING

Product structure diagram



Product advantage

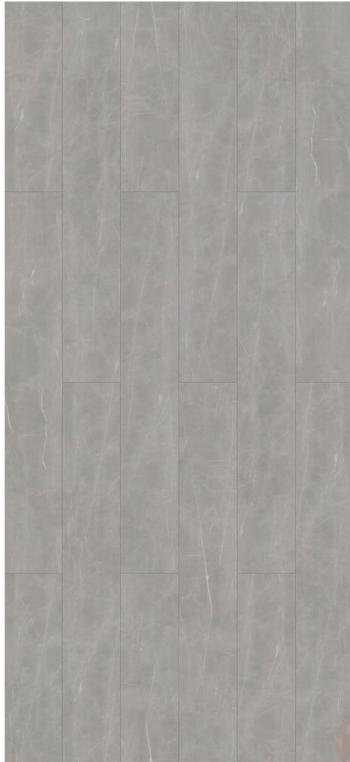
Mildew resistant waterproof new material abrasion resistant and scratch resistant. This product is suitable for home, office, shopping mall restaurant, gym and other scenes, there are a variety of colors to choose from. Locking design, waterproof and moisture-proof, easy to install.

Product specification

Name	SPC stone crystal flooring
Size	1200*182mm
Thickness	5mm
Splicing mode	Locking splicing
Performance	Waterproof

SPC STONE CRYSTAL FLOORING

Optional patterns and decoration cases



LCS09-2



LCS3015

SPC STONE CRYSTAL FLOORING

More optional patterns



LCM78-8



LCM87-19



LCM0086



LCM13-10



LCM13-9



LCM79-13



LCD04-1



LCM32-3

Plastic Wood Flooring



Waterproof



Pro-Environment



Flame-Retardant



Easy to maintain



PLASTIC WOOD FLOORING

Product advantage



Waterproof and anticorrosive without deformation

The front flow film effectively prevents the infiltration of water, and the reverse grille increases the evaporation of water at the ground junction.

High density, wear resistance and pressure resistance

Made of raw materials through high temperature extrusion and other processes, high density, wear resistance and pressure resistance.



Fire and flame retardant, Good weather resistance

It can effectively heat insulation, flame retardant, aging resistance and antistatic.

It can be cut into any shape you want

It can be cut into shapes, spliced into different shapes you want, and every section is complete, so that the designer is no longer difficult.

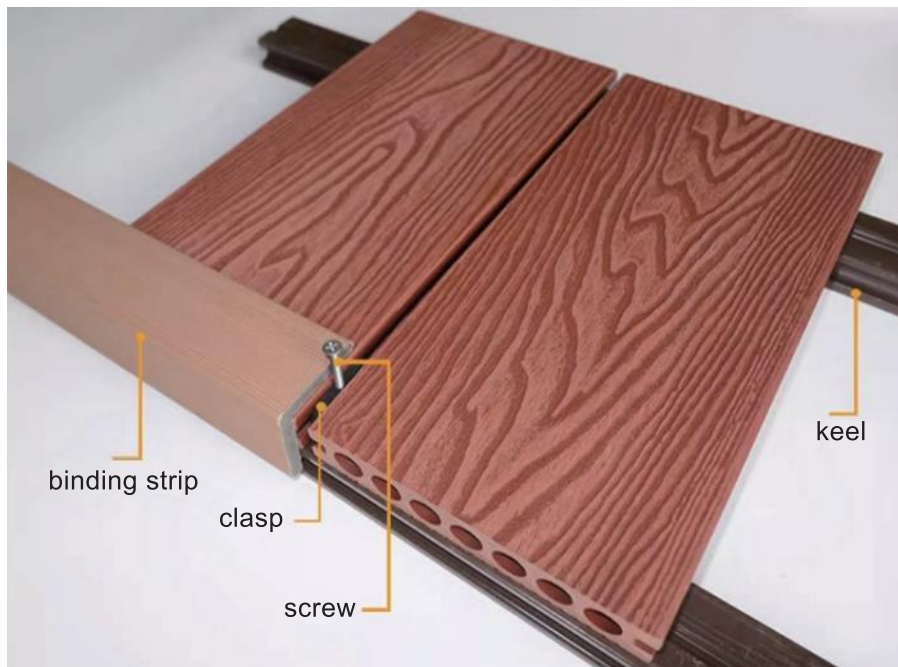


PLASTIC WOOD FLOORING

Three different styles



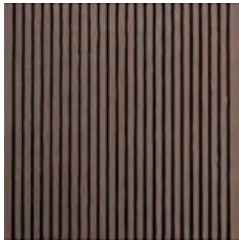
Easy to install



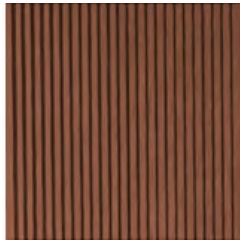
PLASTIC WOOD FLOORING

Product specification & Optional colors

Name	Plastic Wood Flooring - Striped style
Size	4000*140*25mm
Features	Stripe design is more slip-resistant.



striped-1



striped-2



striped-3

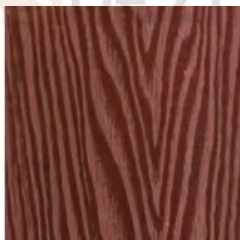


striped-4

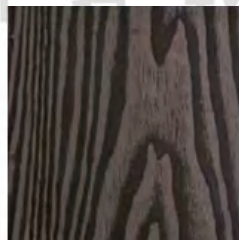
Name	Plastic Wood Flooring - Wood grain style
Size	4000*140*25mm
Features	The wood grain is beautiful.



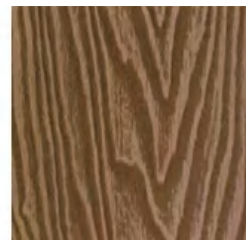
wood grain-1



wood grain-2



wood grain-3

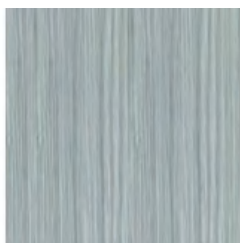


wood grain-4

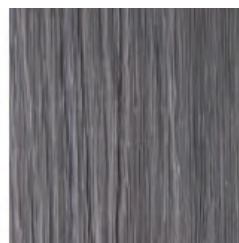
Name	Plastic Wood Flooring - 2nd generation coextruded style
Size	4000*150*23mm
Features	The surface layer is covered with PE protective layer, better wear resistance and scratch resistance.



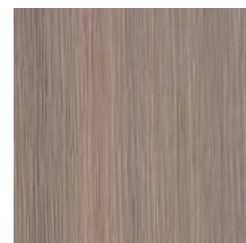
coextruded-1



coextruded-2



coextruded-3



coextruded-4

